



Florida Arbovirus Surveillance Week 23: June 2-8, 2019

Arbovirus surveillance in Florida includes endemic mosquito-borne viruses such as West Nile virus (WNV), Eastern equine encephalitis virus (EEEV), and St. Louis encephalitis virus (SLEV), as well as exotic viruses such as dengue virus (DENV), chikungunya virus (CHIKV) and California encephalitis group viruses (CEV). Malaria, a parasitic mosquito-borne disease is also included. During the period of June 2-8, 2019, the following arboviral activity was recorded in Florida.

WNV activity: No human cases of WNV infection were reported this week. No horses with WNV infection were reported this week. No sentinel chickens tested positive for antibodies to WNV this week. In 2019, one horse and 13 sentinel chickens have been reported from nine counties.

SLEV activity: No human cases of SLEV infection were reported this week. No sentinel chickens tested positive for antibodies to SLEV this week. In 2019, no positive samples have been reported.

EEEV activity: No human cases of EEEV infection were reported this week. No horses with EEEV infection were reported this week. One eagle with EEEV infection was reported this week in Hamilton County. Two sentinel chickens tested positive for antibodies to EEEV this week in Leon and Polk counties. In 2019, twelve horses, one emu, one eagle, and 34 sentinel chickens have been reported from 17 counties.

International Travel-Associated Dengue Fever Cases: Three cases of dengue fever were reported this week in persons that had international travel. In 2019, 33 travel-associated cases have been reported.

Dengue Fever Cases Acquired in Florida: No cases of locally acquired dengue fever were reported this week. In 2019, no cases of locally acquired dengue fever have been reported.

International Travel-Associated Chikungunya Fever Cases: No cases of chikungunya fever were reported this week in persons that had international travel. In 2019, two travel-associated cases have been reported.

Chikungunya Fever Cases Acquired in Florida: No cases of locally acquired chikungunya fever were reported this week. In 2019, no cases of locally acquired chikungunya fever have been reported.

International Travel-Associated Zika Fever Cases: One case of Zika fever was reported this week in a person that had international travel. In 2019, 21 travel-associated cases have been reported.

Zika Fever Cases Acquired in Florida: No cases of locally acquired Zika fever were reported this week. In 2019, no cases of locally acquired Zika fever have been reported.

Advisories/Alerts: Bay, Calhoun, and Walton counties are currently under a mosquito-borne illness advisory. No other counties are currently under mosquito-borne illness advisory or alert.

There are no areas of ongoing, active Zika transmission in Florida. For additional information on current CDC recommendations, please visit www.cdc.gov/zika/intheus/florida-update.html. For additional information on Zika virus cases from 2016–2018, including up-to-date numbers, please visit <https://zikafreefl.org/>.

There are Level 2 Travel Health Notices for Brazil and Nigeria related to the transmission of yellow fever virus. Additional information on travel health notices can be found at the following link: wwwnc.cdc.gov/travel/notices. For a map of arboviral disease activity in the United States, please visit the following link: www.cdc.gov/arbovirus/maps/ADB_Diseases_Map/index.html.

2019 Human Case Summary*

International Travel-Associated Chikungunya Fever Cases: Two cases of chikungunya fever with onset in 2019 have been reported in individuals with travel history to a chikungunya endemic country in the two weeks prior to onset. Countries of origin were: Brazil and Thailand. Counties reporting cases were: Orange and Palm Beach.

International Travel-Associated Dengue Fever Cases: Thirty-three cases of dengue fever with onset in 2019 have been reported in individuals with travel history to a dengue endemic country in the two weeks prior to onset. Countries of origin were: Brazil (2), Central America/Mexico, Colombia, Cuba (19), Guatemala, Honduras, Jamaica (4), Malaysia/Singapore, Mexico, and Venezuela (2). Counties reporting cases were: Broward (5), Hillsborough, Lake, Lee, Miami-Dade (20), Orange (2), Palm Beach, Pinellas, and Putnam. Three cases were reported in non-Florida residents. In 2019, 25 cases of dengue reported in Florida have been serotyped by PCR. Additional serotyping and strain typing are being conducted.

| | # of cases per serotype – 2019 |
|--------------|--------------------------------|
| DENV-1 | 3 |
| DENV-2 | 17 |
| DENV-3 | 5 |
| Total | 25 |

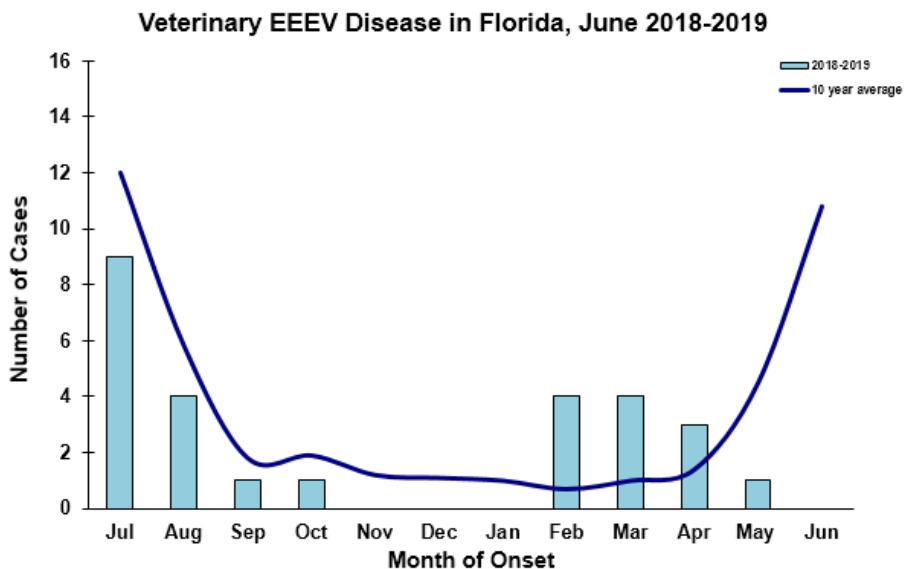
International Travel-Associated Zika Fever Cases: In 2019, 21 cases of Zika fever have been reported in individuals with travel history to a country or area experiencing Zika virus activity. Countries of origin were: Brazil, Colombia, Cuba (2), Guatemala (4), Haiti (6), Honduras (3), Jamaica, Nicaragua, Philippines, and Venezuela. Counties reporting cases were: Broward (2), Collier (2), Hillsborough, Indian River, Miami-Dade (10), Orange (4), and Palm Beach. One case was reported in a non-Florida resident. Florida is monitoring a total of 10 pregnant women in 2019.

International Travel-Associated Malaria Cases: Nineteen cases of malaria with onset in 2019 have been reported. Countries of origin were: Angola, Congo, Democratic Republic of the Congo (2), Ghana (3), Ivory Coast (4), Kenya (2), Liberia, Nigeria (3), Sudan, and Uganda. Counties reporting cases were: Broward, Duval, Hillsborough (4), Miami-Dade (5), Orange (3), Pasco, Pinellas (3), and Polk. Two cases were reported in non-Florida residents. All 19 cases were diagnosed with *Plasmodium falciparum*.

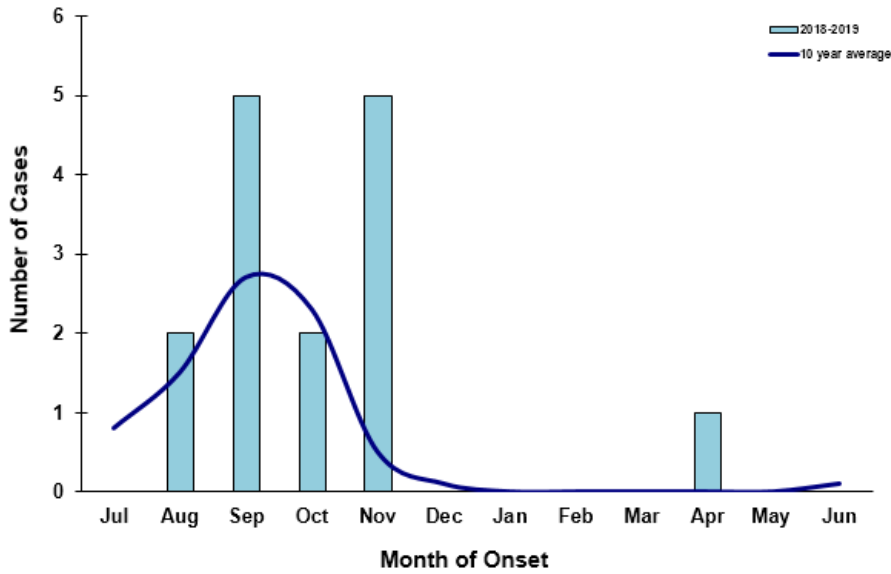
Veterinary Cases*

*Veterinary cases are reported by date of onset. Only mammalian veterinary cases are included in the graphs.

One eagle with EEEV infection was reported this week in Hamilton County.



Veterinary WNV Disease in Florida, June 2018-2019



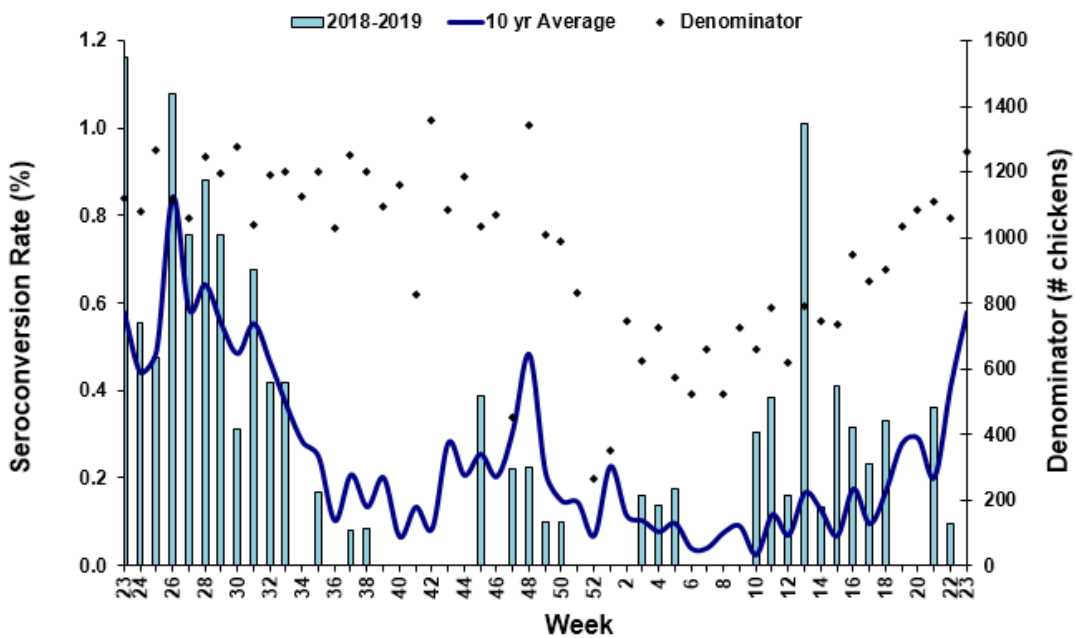
Sentinel Chickens*

The table below is for the reporting of confirmatory laboratory results from this week. Some of the samples were collected at earlier dates. The date of collection is recorded for samples collected on that day along with the total number of positives and the corresponding seroconversion rate for the week the sample was collected.

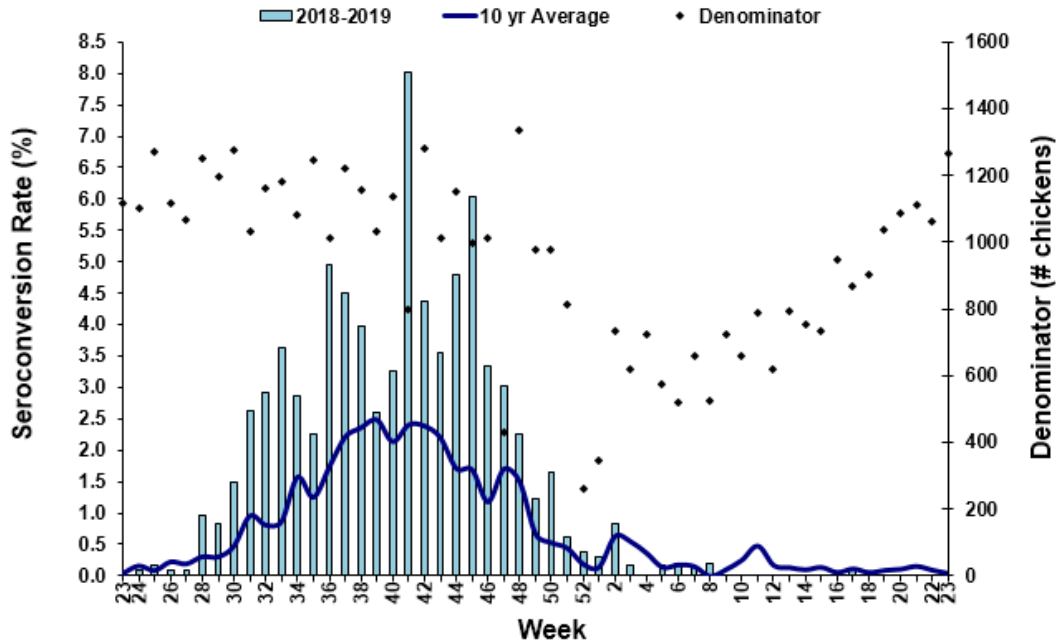
Two sentinel chickens tested positive for antibodies to EEEV this week in Leon and Polk counties.

| County | Collection Date | Seroconversion Rates (%) | | | | | County Totals | | |
|--------|-----------------|--------------------------|------|-----|-------|------|---------------|-----------------|--------|
| | | Flavi | SLEV | WNV | Alpha | EEEV | HJV | Collection Week | YTD |
| Leon | 5/28/19 | | | | 2.50 | 2.50 | | 1 EEEV | 1 EEEV |
| Polk | 5/24/19 | | | | 5.56 | 5.56 | | 2 EEEV | 2 EEEV |

Sentinel Seroconversions to EEEV in Florida, 2018-2019



Sentinel Seroconversions to WNV in Florida, 2018-2019



Mosquito Pools

No mosquito pools tested positive for EEEV, WNV, or Zika this week.

| County | Collection Date | Result | Species | County YTD |
|--------|-----------------|--------|---------|------------|
| | | | | |

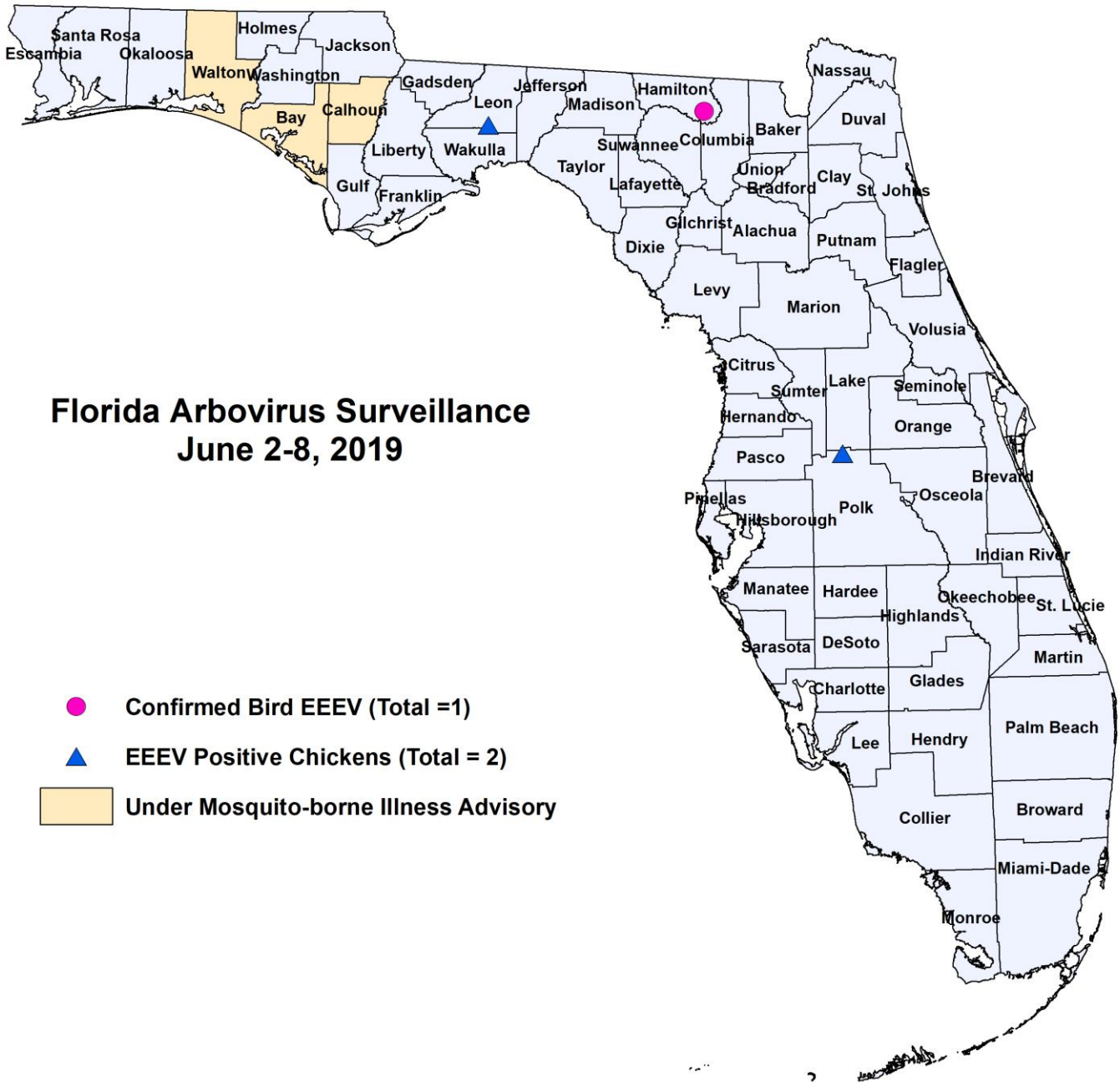
Dead Birds

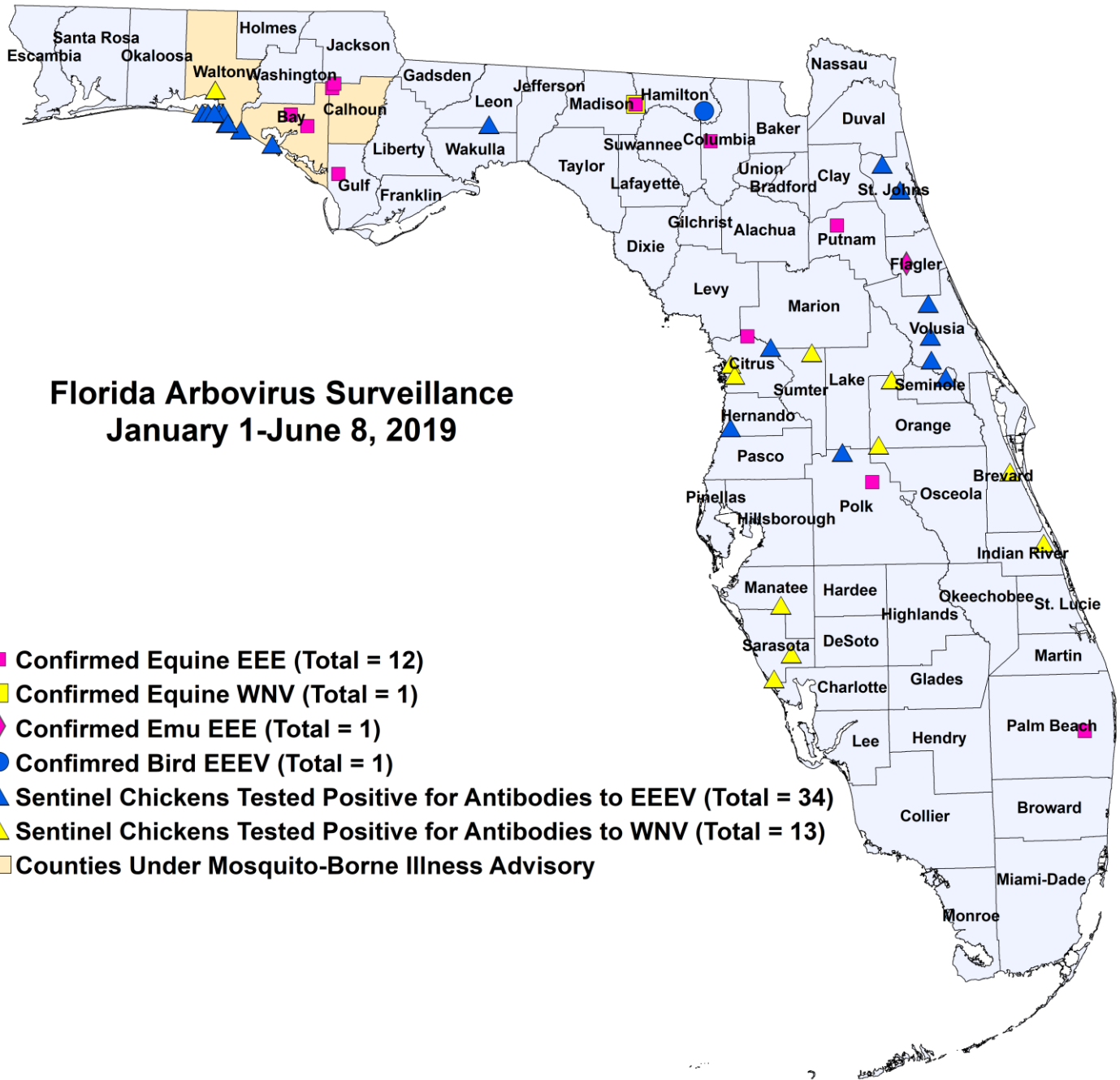
The Fish and Wildlife Conservation Commission (FWC) collects reports of dead birds, which can be an indication of arbovirus circulation in an area. This week, nine reports representing a total of 32 dead birds, including two raptors, were received from seven counties.

In 2019, 195 reports representing a total of 352 dead birds (10 crows, 6 jays, 53 raptors, and 10 doves) were received from 38 of Florida's 67 counties. Please note that FWC collects reports of birds that have died from a variety of causes, not only arboviruses. Dead birds should be reported to www.myfwc.com/bird/.

2019

| County | Total Dead Birds | Crows | Jays | Raptors | Doves |
|--------------|------------------|-------|------|---------|-------|
| Bay | 3 | 0 | 0 | 0 | 0 |
| Charlotte | 1 | 0 | 0 | 1 | 0 |
| Hillsborough | 1 | 0 | 0 | 1 | 0 |
| Jackson | 1 | 0 | 0 | 0 | 0 |
| Orange | 3 | 0 | 0 | 0 | 0 |
| Palm Beach | 9 | 0 | 0 | 0 | 0 |
| Pinellas | 14 | 0 | 0 | 0 | 0 |





Florida Arbovirus Surveillance January 1-June 8, 2019

- Confirmed Equine EEE (Total = 12)
- Confirmed Equine WNV (Total = 1)
- ◆ Confirmed Emu EEE (Total = 1)
- Confirmed Bird EEEV (Total = 1)
- ▲ Sentinel Chickens Tested Positive for Antibodies to EEEV (Total = 34)
- ▲ Sentinel Chickens Tested Positive for Antibodies to WNV (Total = 13)
- Counties Under Mosquito-Borne Illness Advisory

| 2019 Arbovirus Activity by County | |
|-----------------------------------|---|
| County | Arbovirus Activity |
| Bay | EEEV: 2 horses (2/24, 2/26), 3 sentinels (4/29) |
| Brevard | WNV: 1 sentinel (1/3) |
| Calhoun | EEEV: 3 horses (3/3, 3/22) |
| Columbia | EEEV: 1 horse (3/30) |
| Citrus | WNV: 2 sentinels (1/8, 1/29) EEEV: 1 horse (5/11), 1 sentinel (4/26) |
| Flagler | EEEV: 1 emu (3/17) |
| Gulf | EEEV: 1 horse (2/27) |
| Hamilton | EEEV: 1 eagle (3/21) |
| Hernando | EEEV: 1 sentinel (3/4) |
| Indian River | WNV: 1 sentinel (1/10) |
| Leon | EEEV: 1 sentinel (5/28) |

| | |
|-------------------|--|
| Madison | WNV: 1 horse (4/1) EEEV: 1 horse (4/1) |
| Manatee | WNV: 1 sentinel (2/5) |
| Orange | WNV: 4 sentinels (1/7, 1/10, 1/14) |
| Palm Beach | EEEV: 1 horse (2/25) |
| Polk | EEEV: 1 horse (4/24), 2 sentinels (5/21, 5/24) |
| Putnam | EEEV: 1 horse (4/28) |
| Sarasota | WNV: 2 sentinels (2/15, 2/22) |
| Seminole | EEEV: 1 sentinel (4/8) |
| St. Johns | EEEV: 2 sentinels (4/8, 4/15) |
| Sumter | WNV: 1 sentinel (1/8) |
| Volusia | EEEV: 3 sentinels (1/14, 1/22, 1/28) |
| Walton | WNV: 1 sentinel (4/23) EEEV: 20 sentinels (3/5, 3/11, 3/12, 3/18, 3/25, 3/26, 4/1, 4/9, 4/15, 4/23, 5/20) |

Acknowledgements and Data Sources

Contributors: Andrea Morrison, PhD, MSPH, Dana Giandomenico, MPH, and Danielle Stanek, DVM, DOH Bureau of Epidemiology; Lea Heberlein-Larson, Maribel Castaneda, and Valerie Mock, DOH Bureau of Public Health Laboratories; Carina Blackmore, DVM, PhD, DOH Division of Disease Control and Health Protection.

For more surveillance information, please see the DOH website at: www.floridahealth.gov/diseases-and-conditions/mosquito-borne-diseases/surveillance.html

For arbovirus surveillance information for the United States, please see the Centers for Disease Control and Prevention website at: www.cdc.gov/ncidod/dvbid/westnile/surv&control.htm

Case tallies included in the weekly Florida arbovirus surveillance report include confirmed and probable cases for EEE, WNV infection, SLE, dengue, chikungunya, and malaria by date of onset. Suspect cases are not included. Activity is mapped by county of exposure rather than county of residence. Case definitions being used in Florida are consistent with national criteria provided by the Council of State and Territorial Epidemiologists (CSTE) and may be viewed at: www.floridahealth.gov/diseases-and-conditions/disease-reporting-and-management/disease-reporting-and-surveillance/index.html. Case tallies reported by CDC do not include suspect cases and cases are reported by patient state of residence rather than where the exposure occurred. Data is provided by county health departments, Department of Health Bureau of Public Health Laboratories, Department of Agriculture and Consumer Services, mosquito control agencies, Florida Fish and Wildlife Conservation Commission, medical providers and veterinarians. Equine cases are provided by the Department of Agriculture and Consumer Services.