



## Florida Arbovirus Surveillance Week 32: August 3-9, 2025

Arbovirus surveillance in Florida includes endemic mosquito-borne viruses such as West Nile virus (WNV), Eastern equine encephalitis virus (EEEV), and St. Louis encephalitis virus (SLEV), as well as exotic viruses such as dengue virus (DENV), chikungunya virus (CHIKV), Zika virus (ZIKV), and California encephalitis group viruses (CEV). Malaria, a parasitic mosquito-borne disease is also included. During the period of August 3-9, 2025, the following arboviral activity was recorded in Florida.

**WNV activity:** No human cases of WNV infection were reported this week. No horses with WNV infection were reported this week. Two sentinel chickens tested positive for antibodies to WNV in Alachua and Leon counties. In 2025, positive samples from five asymptomatic blood donors, one horse, and 37 sentinel chickens have been reported from 18 counties.

**SLEV activity:** No human cases of SLEV infection were reported this week. No sentinel chickens tested positive for antibodies to SLEV this week. In 2025, positive samples from two sentinel chickens have been reported from two counties.

**EEEV activity:** No human cases of EEEV infection were reported this week. One horse with EEEV infection was reported in Nassau County. One goat with EEEV infection was reported in Bay County. Five sentinel chickens tested positive for antibodies to EEEV in Alachua, Hillsborough, Leon, Orange, and Volusia counties. In 2025, positive samples from seven horses, two emus, one emu flock, one goat, and 39 sentinel chickens have been reported from 20 counties.

**International Travel-Associated Dengue:** Nineteen cases of dengue were reported this week in persons that had international travel. In 2025, 141 travel-associated dengue cases have been reported.

**Dengue Cases Acquired in Florida:** Two cases of locally acquired dengue were reported this week. In 2025, positive samples from 10 humans and two mosquito pools have been reported from two counties.

**International Travel-Associated Chikungunya Fever Cases:** No cases of chikungunya fever were reported this week in persons that had international travel. In 2025, four cases of travel-associated chikungunya fever have been reported.

**Chikungunya Fever Cases Acquired in Florida:** No cases of locally acquired chikungunya fever were reported this week. In 2025, no cases of locally acquired chikungunya fever have been reported.

**International Travel-Associated Oropouche Fever cases:** No cases of Oropouche fever were reported this week in persons that had international travel. In 2025, no cases of travel-associated Oropouche fever have been reported.

**International Travel-Associated Zika Fever Cases:** No cases of Zika fever were reported this week in persons that had international travel. In 2025, no travel-associated Zika fever cases have been reported.

**Zika Fever Cases Acquired in Florida:** No cases of locally acquired Zika fever were reported this week. In 2025, no cases of locally acquired Zika fever have been reported.

**Advisories/Alerts:** Lafayette and St. Johns counties are currently under a mosquito-borne illness advisory. Brevard, Escambia, and Miami-Dade counties are currently under a mosquito-borne illness alert. No other counties are currently under a mosquito-borne illness advisory or alert.

There are currently multiple travel health notices from the Centers for Disease Control and Prevention related to mosquito-borne diseases.

| Dengue                     |           |                              | Oropouche               | Yellow Fever | Chikungunya |                      |       | Malaria  |
|----------------------------|-----------|------------------------------|-------------------------|--------------|-------------|----------------------|-------|----------|
| Africa and the Middle East | Americas  | Asia and the Pacific Islands | Americas                | Americas     | Africa      | Americas             | Asia  | Africa   |
| Comoros                    | Colombia  | Austral Islands              | Brazil (Espírito Santo) | Bolivia      | Kenya       | Bolivia (Santa Cruz) | China | Ethiopia |
| Samoa                      | Ecuador   | Bangladesh                   | Brazil                  | Brazil       | Madagascar  |                      |       |          |
| Sudan                      | Guatemala | Cook Islands, NZ             | Colombia                | Colombia     | Mauritius   |                      |       |          |
|                            | Panama    | Fiji                         | Cuba                    | Peru         | Mayotte     |                      |       |          |
|                            |           | French Polynesia             | Panama (Darién)         |              | Réunion     |                      |       |          |
|                            |           | Kiribati                     | Panama                  |              | Somalia     |                      |       |          |
|                            |           | Marquesas Islands            | Peru                    |              | Sri Lanka   |                      |       |          |
|                            |           | Mali                         |                         |              |             |                      |       |          |
|                            |           | Philippines                  |                         |              |             |                      |       |          |
|                            |           | Tonga                        |                         |              |             |                      |       |          |
|                            |           | Tuvalu                       |                         |              |             |                      |       |          |

Level 1 Travel Health Notice, Level 2 Travel Health Alert: [wwwnc.cdc.gov/travel/notices](http://wwwnc.cdc.gov/travel/notices).

For a map of arboviral disease activity in the United States visit: <https://www.cdc.gov/fight-the-bite/at-risk/index.html>.

## 2025 Human Case Summary

**West Nile Virus Illness Acquired in Florida:** In 2025, five asymptomatic blood donors have been reported in Escambia (June, July), Miami-Dade (July), and St. Johns (June) counties.

**2025 International Travel-Associated Chikungunya Cases:** Four cases with onset in 2025 have been reported in individuals with travel history to a chikungunya-endemic area in the two weeks prior to onset. Counties reporting cases were: Broward (2), Lake, and Miami-Dade. Countries of origin were: Bolivia, Brazil, Indonesia, and Sri Lanka.

**2025 International Travel-Associated Dengue Cases:** One hundred forty-one cases with onset in 2025 have been reported in individuals with travel history to a dengue-endemic area in the two weeks prior to onset. Counties reporting cases were: Bay, Brevard (2), Broward (10), Clay, Collier (2), Duval (3), Escambia, Hillsborough (8), Lake (4), Lee (5), Manatee, Marion, Miami-Dade (77), Okeechobee (3), Orange (7), Osceola (2), Palm Beach (5), Pasco, Pinellas (3), Polk, St. Johns, St. Lucie, and Volusia. Eight cases were reported in non-Florida residents. In 2025, 119 cases of dengue reported in Florida have been serotyped by PCR. Please see the table below for a breakdown of cases by country of origin and serotype.

| Country of Exposure | DENV-1 | DENV-2 | DENV-3 | DENV-4 | Unknown | Total |
|---------------------|--------|--------|--------|--------|---------|-------|
| Antigua and Barbuda |        |        | 1      |        |         | 1     |
| Argentina           | 2      |        |        |        |         | 2     |
| Bahamas             |        |        | 1      |        |         | 1     |
| Bonaire             |        |        | 1      |        |         | 1     |
| Brazil              | 1      | 4      | 1      |        | 3       | 9     |
| Colombia            | 1      | 1      | 1      |        |         | 3     |
| Cuba                |        | 1      | 4      | 61     | 10      | 76    |
| Curacao             |        |        | 1      |        |         | 1     |
| Dominica            |        |        | 1      |        |         | 1     |
| Dominican Republic  |        |        | 1      |        |         | 1     |
| Ecuador             |        |        | 3      |        |         | 3     |
| El Salvador         |        |        | 1      |        |         | 1     |
| French Polynesia    |        |        |        |        | 1       | 1     |
| Guatemala           |        |        | 2      |        |         | 2     |
| Guyana              |        | 4      |        |        | 2       | 6     |

| Country of Exposure  | DENV-1   | DENV-2    | DENV-3    | DENV-4    | Unknown   | Total      |
|----------------------|----------|-----------|-----------|-----------|-----------|------------|
| Mexico               |          |           | 7         |           |           | 7          |
| Nicaragua            |          |           | 4         |           | 1         | 5          |
| Peru                 |          |           | 1         |           |           | 1          |
| Philippines          |          |           |           |           | 1         | 1          |
| Puerto Rico          |          |           | 9         |           | 1         | 10         |
| Sri Lanka            |          |           |           |           | 1         | 1          |
| St. Barts            |          |           | 3         |           |           | 3          |
| St. Barts/St. Martin |          |           | 1         |           |           | 1          |
| US Virgin Islands    |          | 1         |           |           | 2         | 3          |
| <b>Total</b>         | <b>4</b> | <b>11</b> | <b>43</b> | <b>61</b> | <b>22</b> | <b>141</b> |

**2025 Dengue Cases Acquired in Florida:** In 2025, 10 cases of locally acquired dengue have been reported in Brevard (8) and Miami-Dade (2) counties with onset in February, May, June, and July. Eight cases have been serotyped by PCR. Please see the table below for a breakdown of cases by county and serotype.

| County of Exposure | DENV-3   | DENV-4   | Unknown  | Total     |
|--------------------|----------|----------|----------|-----------|
| Brevard            | 6        |          | 2        | 8         |
| Miami-Dade         | 1        | 1        |          | 2         |
| <b>Total</b>       | <b>7</b> | <b>1</b> | <b>2</b> | <b>10</b> |

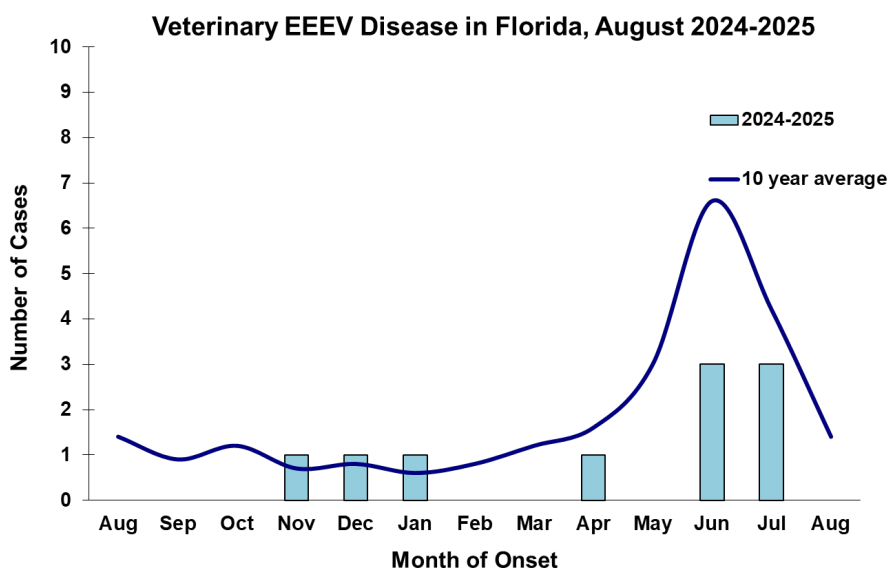
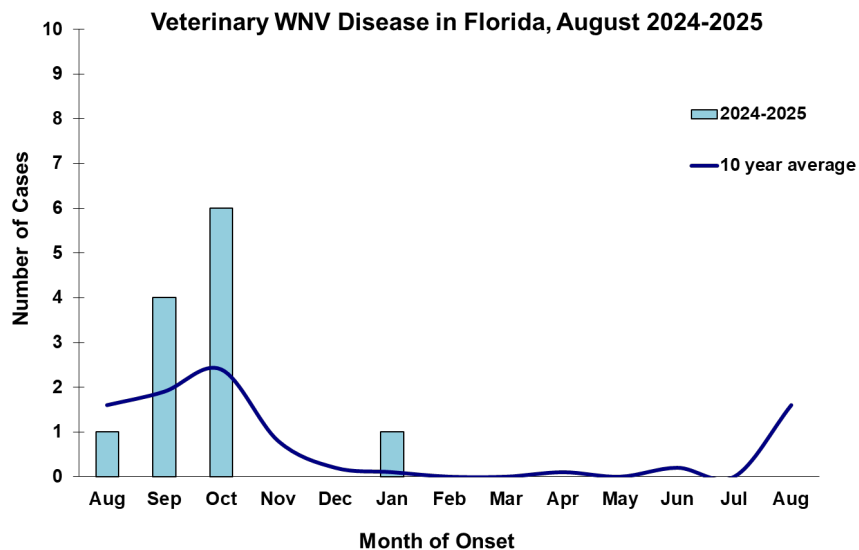
**2025 International Travel-Associated Malaria Cases:** Thirty cases with onset in 2025 have been reported in individuals with travel history to a malaria-endemic area. Counties reporting cases were: Alachua, Brevard, Broward (4), Collier, Duval, Hillsborough, Lake, Leon, Marion (2), Miami-Dade (4), Nassau (2), Orange (3), Palm Beach (3), Polk (2), St. Lucie (2), and Volusia. Ten cases were reported in non-Florida residents. Please see the table below for a breakdown of cases by country of origin and *Plasmodium* species.

| Country of Exposure   | <i>Plasmodium falciparum</i> | <i>Plasmodium vivax</i> | Total     |
|-----------------------|------------------------------|-------------------------|-----------|
| Africa                | 3                            |                         | 3         |
| Angola                | 1                            |                         | 1         |
| Cameroon              | 1                            |                         | 1         |
| Central America       |                              | 1                       | 1         |
| Central Africa        | 1                            |                         | 1         |
| Central/South America |                              | 2                       | 2         |
| Côte D'Ivoire         | 1                            |                         | 1         |
| Gambia                | 1                            |                         | 1         |
| Guinea                | 1                            |                         | 1         |
| Haiti                 | 1                            |                         | 1         |
| Honduras              |                              | 1                       | 1         |
| India                 |                              | 1                       | 1         |
| Liberia               | 1                            |                         | 1         |
| Malawi                | 1                            |                         | 1         |
| Nigeria               | 10                           |                         | 10        |
| Rwanda                | 1                            |                         | 1         |
| Siera Leone           | 1                            |                         | 1         |
| Uganda                | 1                            |                         | 1         |
| <b>Total</b>          | <b>25</b>                    | <b>5</b>                | <b>30</b> |

## Veterinary Cases\*\*

\*\*Veterinary cases are reported by date of onset. Only mammalian veterinary cases are included in the graphs.

One horse with EEEV infection was reported in Nassau County. One goat with EEEV infection was reported in Bay County.



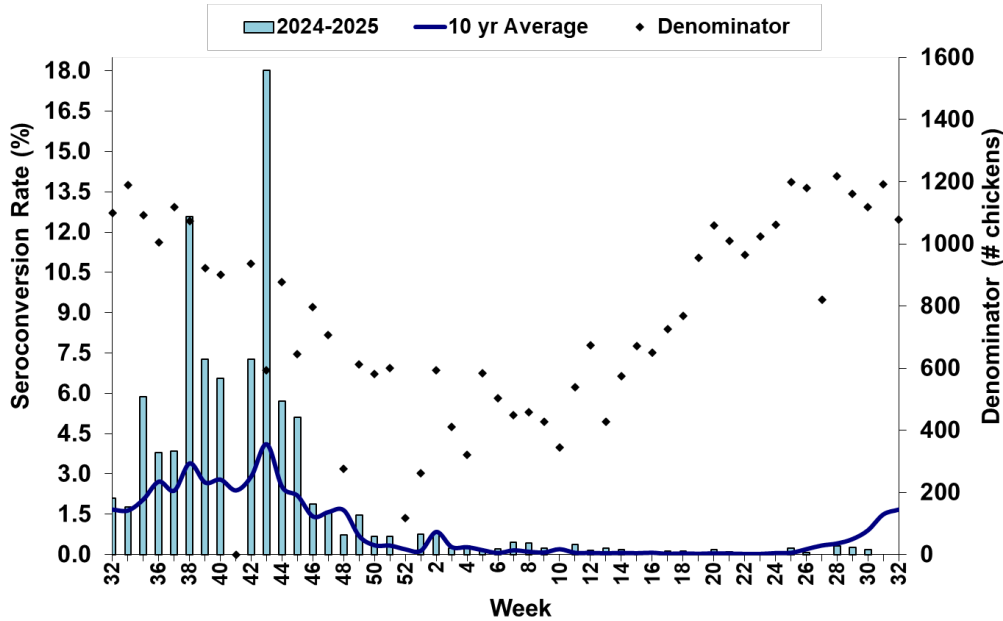
## Sentinel Chickens

The table below is for the reporting of confirmatory laboratory results from this week. Some of the samples were collected at earlier dates. The date of collection is recorded for samples collected on that day along with the total number of positives and the corresponding seroconversion rate for the week the sample was collected.

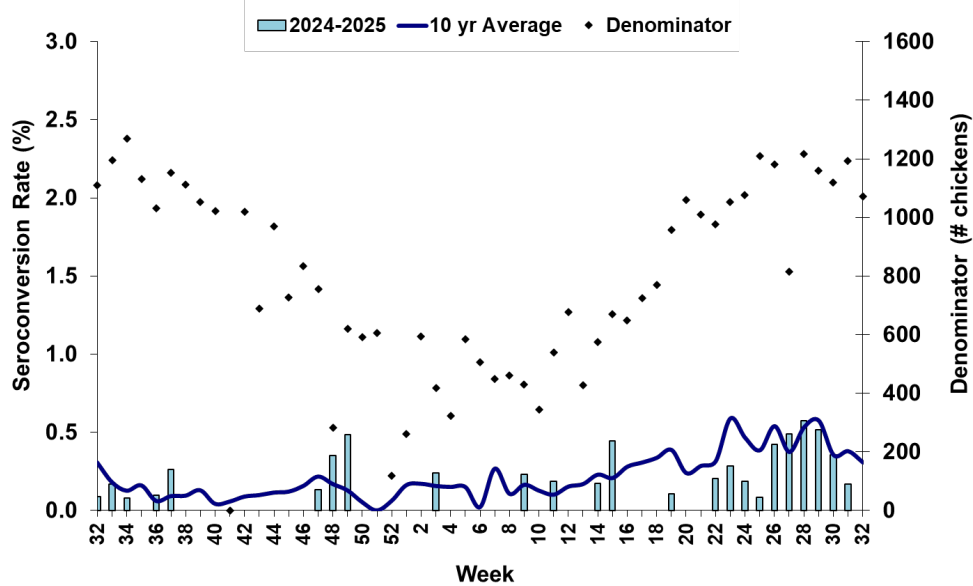
Two sentinel chickens tested positive for antibodies to WNV in Alachua and Leon counties. Five sentinel chickens tested positive for antibodies to EEEV in Alachua, Hillsborough, Leon, Orange, and Volusia counties. Four sentinel chickens tested positive for antibodies to HJV in Orange, St. Lucie, and Walton counties.

| County       | Collection Date | Seroconversion Rates (%) |      |      |       |      |      | County Totals   |                        |
|--------------|-----------------|--------------------------|------|------|-------|------|------|-----------------|------------------------|
|              |                 | Flavi                    | SLEV | WNV  | Alpha | EEEV | HJV  | Collection Week | YTD                    |
| Alachua      | 7/24/2025       | 5.56                     |      | 5.56 | 5.56  | 5.56 |      | 1 EEEV, 1 WNV   | 1 EEEV, 1 WNV          |
| Hillsborough | 7/14/2025       |                          |      |      | 2.27  | 2.27 |      | 1 EEEV          | 1 EEEV, 1 WNV          |
| Leon         | 7/22/2025       | 3.33                     |      | 3.33 | 3.33  | 3.33 |      | 1 EEEV, 1 WNV   | 1 EEEV, 1 WNV          |
| Orange       | 7/14/2025       |                          |      |      | 0.88  |      | 0.88 | 1 HJV           | 11 EEEV, 1, HJV, 1 WNV |
|              | 7/28/2025       |                          |      |      | 2.08  | 0.88 |      | 1 EEEV          |                        |
| St. Lucie    | 7/11/2025       |                          |      |      | 2.08  |      | 2.08 | 1 HJV           | 1 HJV, 1 SLEV          |
| Volusia      | 7/28/2025       |                          |      |      | 3.13  | 3.13 |      | 1 EEEV          | 3 EEEV, 2 WNV          |
| Walton       | 7/14/2025       |                          |      |      | 2.25  |      | 2.25 | 2 HJV           | 9 EEEV, 3 HJV, 3 WNV   |

Sentinel Seroconversions to WNV in Florida, 2024–2025



Sentinel Seroconversions to EEEV in Florida, 2024–2025



## Mosquito Pools

One mosquito pool tested positive for dengue this week in Brevard County.

| County  | Collection Date | Result   | Species            | County YTD |
|---------|-----------------|----------|--------------------|------------|
| Brevard | 8/6/2025        | 1 DENV-3 | <i>Ae. aegypti</i> | 2 DENV-3   |

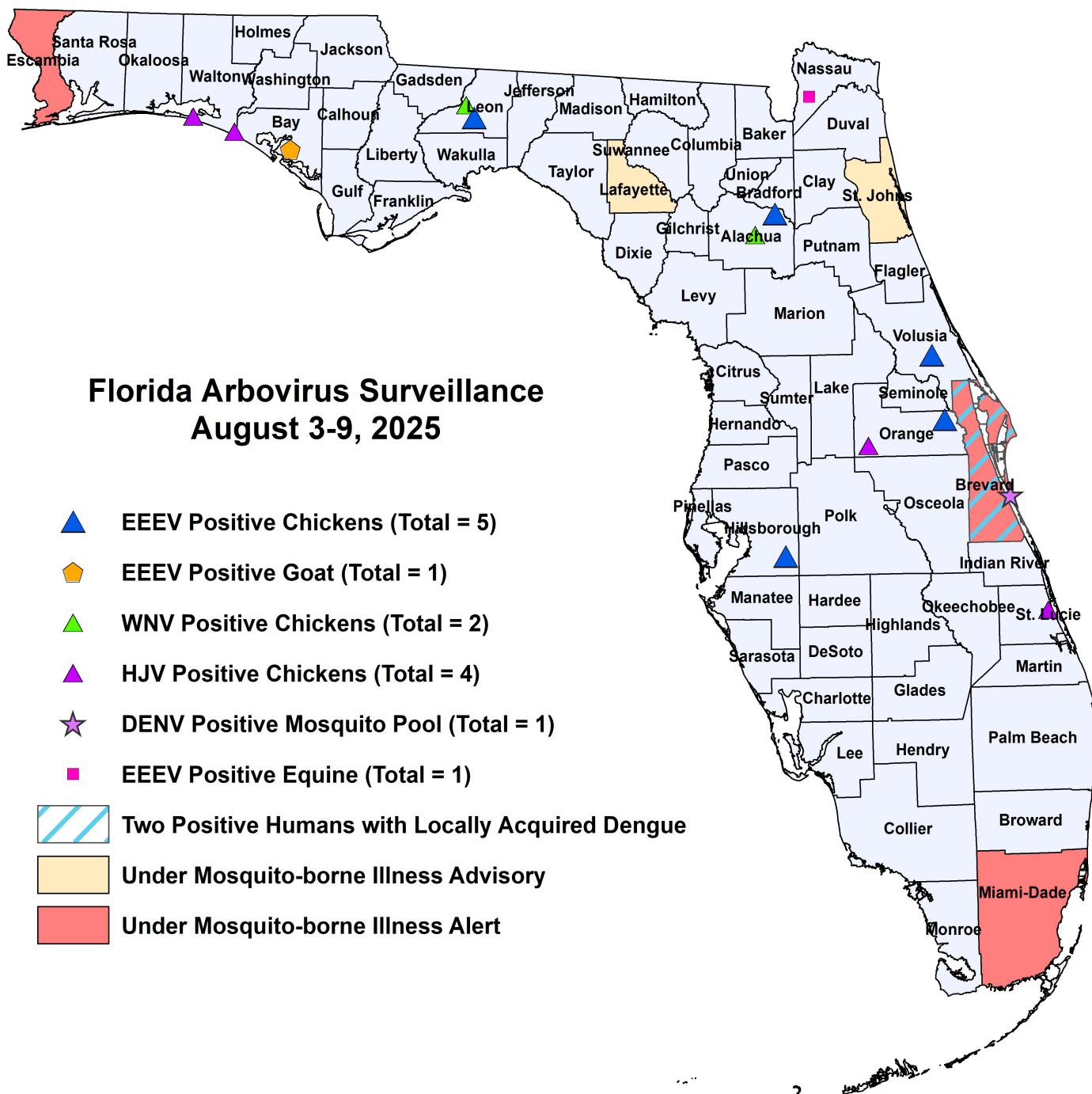
## Dead Birds

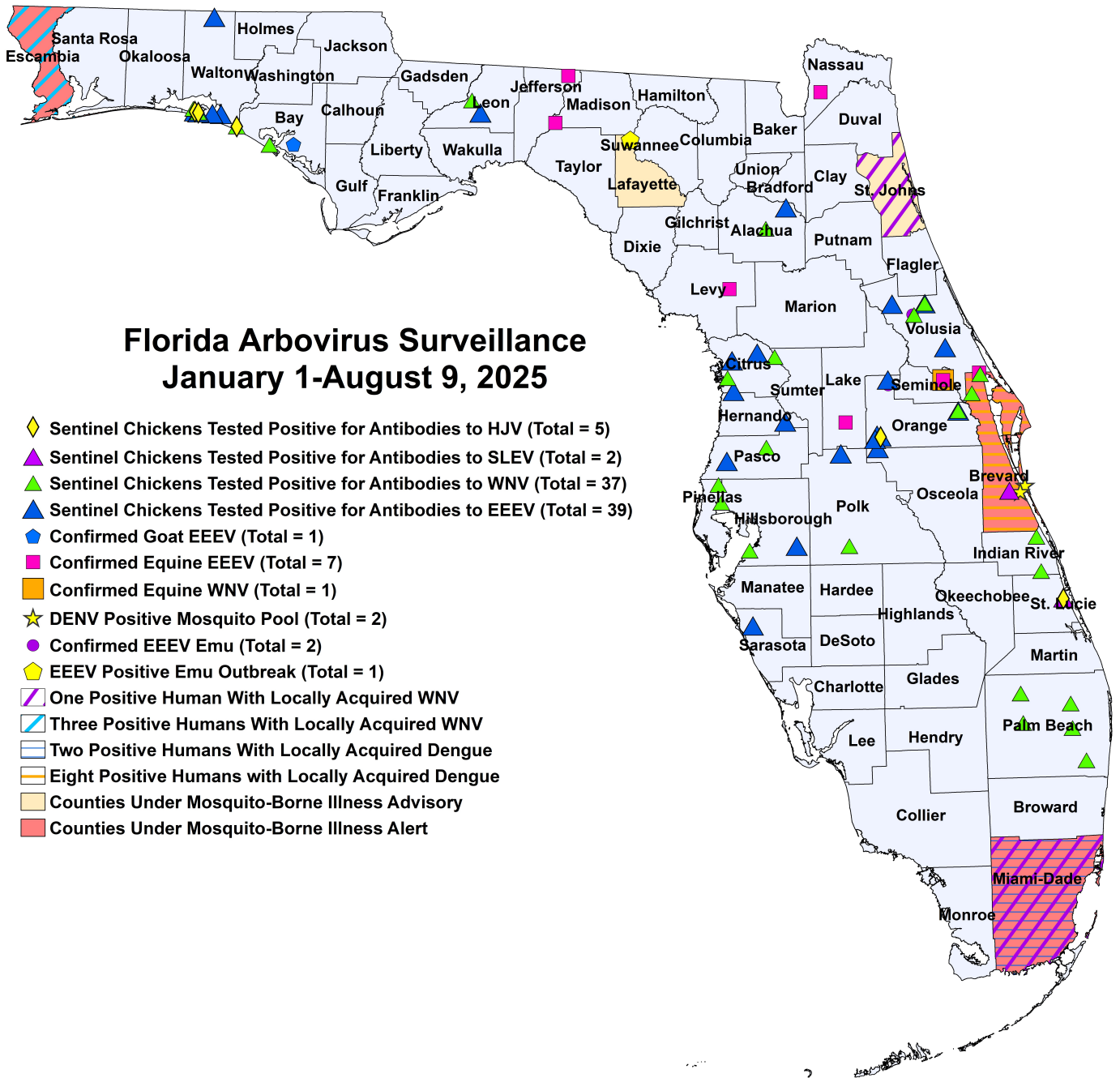
The Fish and Wildlife Conservation Commission (FWC) collects reports of dead birds, which can be an indication of arbovirus circulation in an area. This week, 15 reports representing a total of 68 dead birds, including 21 crows, one raptor, and 5 doves, were received from 12 counties.

In 2025, 1058 reports representing a total of 2228 dead birds (89 crows, 42 jays, 238 raptors, 197 doves) were received from 58 of Florida's 67 counties.

### 2025

| County     | Total Dead Birds | Crows | Jays | Raptors | Doves |
|------------|------------------|-------|------|---------|-------|
| Brevard    | 1                | 0     | 0    | 0       | 0     |
| Broward    | 17               | 0     | 0    | 0       | 0     |
| Calhoun    | 1                | 0     | 0    | 0       | 1     |
| Citrus     | 15               | 0     | 0    | 0       | 0     |
| Collier    | 3                | 1     | 0    | 0       | 2     |
| Duval      | 1                | 0     | 0    | 0       | 0     |
| Lee        | 1                | 0     | 0    | 0       | 0     |
| Miami-Dade | 23               | 20    | 0    | 0       | 1     |
| Monroe     | 1                | 0     | 0    | 0       | 1     |
| Palm Beach | 3                | 0     | 0    | 0       | 0     |
| Pasco      | 1                | 0     | 0    | 0       | 0     |
| Suwannee   | 1                | 0     | 0    | 1       | 0     |





### 2025 Mosquito-Borne Disease Activity by County

| County  | Humans                   | Equines       | Sentinel Chickens  | Other  |
|---------|--------------------------|---------------|--|--|
| Alachua |                          |               | 1 EEEV (7/24)<br>1 WNV (7/24)  |  |
| Bay     |                          |               | 1 WNV (3/24)   | 1 EEEV Goat (7/23)                                     |
| Brevard | 8 dengue (May, July (7)) | 1 EEEV (7/18) | 1 SLEV (7/9)<br>2 WNV (2/7), (7/18)  | 2 DENV-3 mosquito pool ( <i>Ae. aegypti</i> 7/24, 8/6) |
| Citrus  |                          |               | 8 EEEV (3/11), (4/1), (4/8), (5/28), (6/24), (7/7), (7/9)<br>4 WNV (1/6), (2/10), (2/17) |  |



|                     |  |                             |  |   |
|---------------------|--|-----------------------------|--|---|
| <b>Escambia</b>     | 3 asymptomatic WNV blood donors (June (2), July)                   |                             |  |   |
| <b>Hernando</b>     |  |                             | 1 EEEV (7/21)  |   |
| <b>Hillsborough</b> |  |                             | 1 EEEV (7/14)<br>1 WNV (4/21)  |   |
| <b>Indian River</b> |  |                             | 2 WNV (1/2)  |   |
| <b>Jefferson</b>    |  | 1 EEEV (6/12)               |  |   |
| <b>Lafayette</b>    |  |                             |  | 1 EEEV emu flock outbreak (7/6 for the first emu) |
| <b>Lake</b>         |  | 1 EEEV (4/2)                |  |   |
| <b>Leon</b>         |  |                             | 1 EEEV (7/22)<br>1 WNV (7/22)  |   |
| <b>Levy</b>         |  | 1 EEEV (6/20)               |  |   |
| <b>Madison</b>      |  | 1 EEEV (6/30)               |  |   |
| <b>Nassau</b>       |  | 1 EEEV (7/21)               |  |   |
| <b>Miami-Dade</b>   | 2 dengue (February, June)<br>1 asymptomatic WNV blood donor (July) |                             |  |   |
| <b>Orange</b>       |  |                             | 11 EEEV (2/24), (4/7), (6/2), (6/9), (6/16), (6/23), (6/30), (7/14), (7/21), (7/28)<br>1 HJ (7/14)<br>1 WNV (3/31) | 1 EEEV emu (1/1)                                  |
| <b>Palm Beach</b>   |  |                             | 15 WNV (1/7), (1/21), (1/27), (2/10), (2/17), (2/24), (3/10), (3/17), (4/29), (5/13), (6/16)                       |   |
| <b>Pasco</b>        |  |                             | 1 EEEV (7/7)<br>1 WNV (1/13)   |   |
| <b>Pinellas</b>     |  |                             | 2 WNV (1/6), (7/7)   |   |
| <b>Polk</b>         |  |                             | 2 EEEV (6/2), (6/9)<br>1 WNV (6/16)  |   |
| <b>Sarasota</b>     |  |                             | 1 EEEV (7/8)   |   |
| <b>Seminole</b>     |  | 1 EEEV (1/5)<br>1 WNV (1/5) |  |   |
| <b>St. Johns</b>    | 1 asymptomatic WNV blood donor (June)                              |                             |  |   |
| <b>St. Lucie</b>    |  |                             | 1 HJ (7/11)<br>1 SLEV (7/10)   |   |
| <b>Volusia</b>      |  |                             | 3 EEEV (1/14), (4/8), (7/28)<br>2 WNV (6/23), (7/7)  | 1 EEEV emu (1/2)                                  |
| <b>Walton</b>       |  |                             | 9 EEEV (5/5), (6/2), (6/23), (6/30), (7/7), (7/14)<br>3 HJV (6/23), (7/14)<br>3 WNV (5/19), (7/14)                 |   |

### Acknowledgements and Data Sources

Contributors: Andrea Morrison, PhD, MSPH, Rebecca Zimler, PhD, MPH, Olga Ospina, MPH, and Danielle Stanek, DVM, DOH Bureau of Epidemiology; Lea Heberlein, DrPH; Peter Dumoulin, PhD, Maribel Castaneda, and Amanda Davis, BS; DOH Bureau of Public Health Laboratories.

For more surveillance information, please see the DOH website at: [www.floridahealth.gov/diseases-and-conditions/mosquito-borne-diseases/surveillance.html](http://www.floridahealth.gov/diseases-and-conditions/mosquito-borne-diseases/surveillance.html)

**For arbovirus surveillance information for the United States, please see the Centers for Disease Control and Prevention website at: [www.cdc.gov/ncidod/dvbid/westnile/surv&control.htm](http://www.cdc.gov/ncidod/dvbid/westnile/surv&control.htm)**

Case tallies included in the weekly Florida arbovirus surveillance report include confirmed and probable cases for EEE, WNV infection, SLE, dengue, chikungunya, and malaria by date of onset. Suspect cases are not included. Activity is mapped by county of exposure rather than county of residence. Case definitions being used in Florida are consistent with national criteria provided by the Council of State and Territorial Epidemiologists (CSTE) and may be viewed at: [www.floridahealth.gov/diseases-and-conditions/disease-reporting-and-management/disease-reporting-and-surveillance/index.html](http://www.floridahealth.gov/diseases-and-conditions/disease-reporting-and-management/disease-reporting-and-surveillance/index.html). Case tallies reported by CDC do not include suspect cases and cases are reported by patient state of residence rather than where the exposure occurred. Data is provided by county health departments, Department of Health Bureau of Public Health Laboratories, Department of Agriculture and Consumer Services, mosquito control agencies, Florida Fish and Wildlife Conservation Commission, medical providers and veterinarians. Equine cases are provided by the Department of Agriculture and Consumer Services.