



Florida Arbovirus Surveillance Week 22: May 26-June 1, 2019

Arbovirus surveillance in Florida includes endemic mosquito-borne viruses such as West Nile virus (WNV), Eastern equine encephalitis virus (EEEV), and St. Louis encephalitis virus (SLEV), as well as exotic viruses such as dengue virus (DENV), chikungunya virus (CHIKV) and California encephalitis group viruses (CEV). Malaria, a parasitic mosquito-borne disease is also included. During the period of May 26-June 1, 2019, the following arboviral activity was recorded in Florida.

WNV activity: No human cases of WNV infection were reported this week. No horses with WNV infection were reported this week. No sentinel chickens tested positive for antibodies to WNV this week. In 2019, one horse and 13 sentinel chickens have been reported from nine counties.

SLEV activity: No human cases of SLEV infection were reported this week. No sentinel chickens tested positive for antibodies to SLEV this week. In 2019, no positive samples have been reported.

EEEV activity: No human cases of EEEV infection were reported this week. No horses with EEEV infection were reported this week. Three sentinel chickens tested positive for antibodies to EEEV this week in Polk and Walton counties. In 2019, twelve horses, one emu, and 32 sentinel chickens have been reported from 15 counties.

International Travel-Associated Dengue Fever Cases: One case of dengue fever was reported this week in a person that had international travel. In 2019, 30 travel-associated cases have been reported.

Dengue Fever Cases Acquired in Florida: No cases of locally acquired dengue fever were reported this week. In 2019, no cases of locally acquired dengue fever have been reported.

International Travel-Associated Chikungunya Fever Cases: No cases of chikungunya fever were reported this week in persons that had international travel. In 2019, two travel-associated cases have been reported.

Chikungunya Fever Cases Acquired in Florida: No cases of locally acquired chikungunya fever were reported this week. In 2019, no cases of locally acquired chikungunya fever have been reported.

International Travel-Associated Zika Fever Cases: One case of Zika fever was reported this week in a person that had international travel. In 2019, 20 travel-associated cases have been reported.

Zika Fever Cases Acquired in Florida: No cases of locally acquired Zika fever were reported this week. In 2019, no cases of locally acquired Zika fever have been reported.

Advisories/Alerts: Bay, Calhoun, and Walton counties are currently under a mosquito-borne illness advisory. No other counties are currently under mosquito-borne illness advisory or alert.

There are no areas of ongoing, active Zika transmission in Florida. For additional information on current CDC recommendations, please visit www.cdc.gov/zika/intheus/florida-update.html. For additional information on Zika virus cases from 2016–2018, including up-to-date numbers, please visit <https://zikafreefl.org/>.

There are Level 2 Travel Health Notices for Brazil and Nigeria related to the transmission of yellow fever virus. Additional information on travel health notices can be found at the following link: wwwnc.cdc.gov/travel/notices. For a map of arboviral disease activity in the United States, please visit the following link: www.cdc.gov/arbovet/maps/ADB_Diseases_Map/index.html.

2019 Human Case Summary*

International Travel-Associated Chikungunya Fever Cases: Two cases of chikungunya fever with onset in 2019 have been reported in individuals with travel history to a chikungunya endemic country in the two weeks prior to onset. Countries of origin were: Brazil and Thailand. Counties reporting cases were: Orange and Palm Beach.

International Travel-Associated Dengue Fever Cases: Thirty cases of dengue fever with onset in 2019 have been reported in individuals with travel history to a dengue endemic country in the two weeks prior to onset. Countries of origin were: Central America/Mexico, Colombia, Cuba (19), Guatemala, Honduras, Jamaica (4), Mexico, and Venezuela (2). Counties reporting cases were: Broward (5), Hillsborough, Lake, Lee, Miami-Dade (18), Orange, Palm Beach, Pinellas, and Putnam. One case was reported in a non-Florida resident. In 2019, 22 cases of dengue reported in Florida have been serotyped by PCR. Additional serotyping and strain typing are being conducted.

	# of cases per serotype – 2019
DENV-1	3
DENV-2	14
DENV-3	5
Total	22

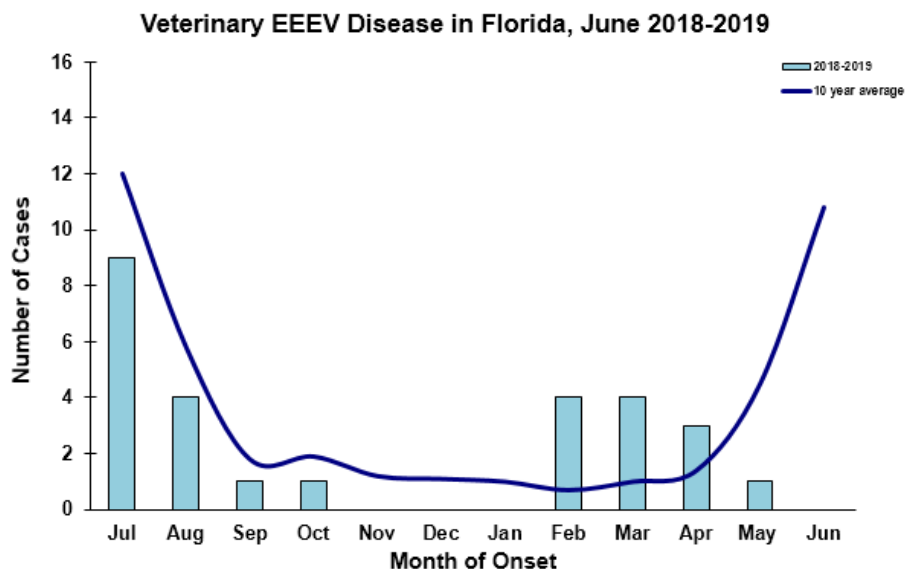
International Travel-Associated Zika Fever Cases: In 2019, 20 cases of Zika fever have been reported in individuals with travel history to a country or area experiencing Zika virus activity. Countries of origin were: Brazil, Colombia, Cuba (2), Guatemala (4), Haiti (6), Honduras (2), Jamaica, Nicaragua, Philippines, and Venezuela. Counties reporting cases were: Broward (2), Collier, Hillsborough, Indian River, Miami-Dade (10), Orange (4), and Palm Beach. One case was reported in a non-Florida resident. Florida is monitoring a total of nine pregnant women in 2019.

International Travel-Associated Malaria Cases: Eighteen cases of malaria with onset in 2019 have been reported. Countries of origin were: Angola, Congo, Democratic Republic of the Congo (2), Ghana (3), Ivory Coast (4), Kenya, Liberia, Nigeria (3), Sudan, and Uganda. Counties reporting cases were: Broward, Duval, Hillsborough (3), Miami-Dade (5), Orange (3), Pasco, Pinellas (3), and Polk. Two cases were reported in non-Florida residents. All 18 cases were diagnosed with *Plasmodium falciparum*.

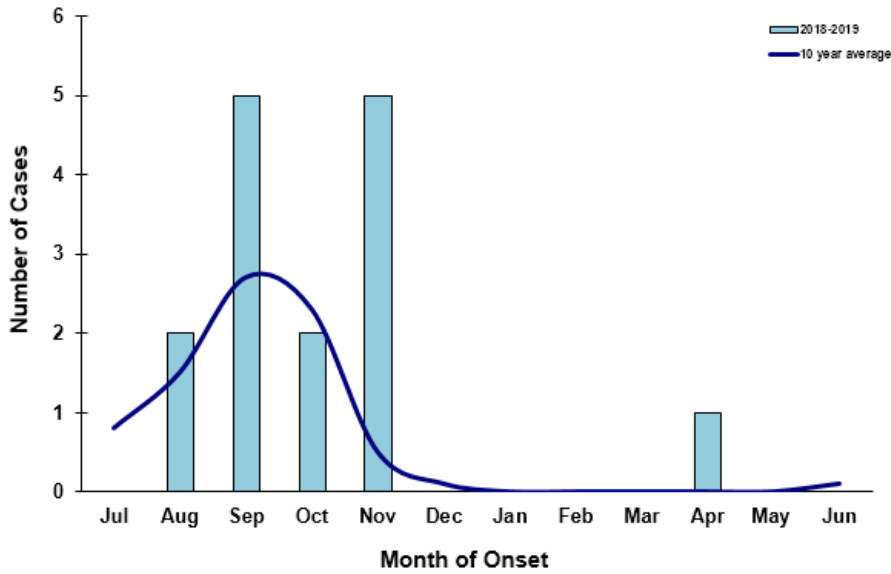
Veterinary Cases*

*Veterinary cases are reported by date of onset. Only mammalian veterinary cases are included in the graphs.

No horses with EEEV or WNV infection were reported this week.



Veterinary WNV Disease in Florida, June 2018-2019



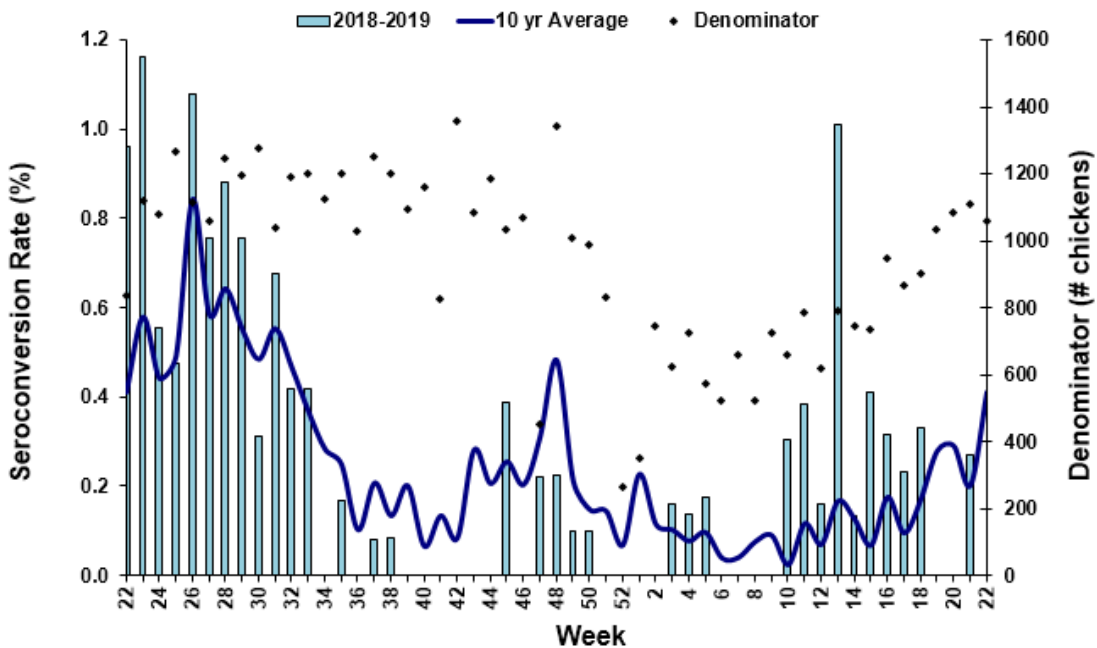
Sentinel Chickens*

The table below is for the reporting of confirmatory laboratory results from this week. Some of the samples were collected at earlier dates. The date of collection is recorded for samples collected on that day along with the total number of positives and the corresponding seroconversion rate for the week the sample was collected.

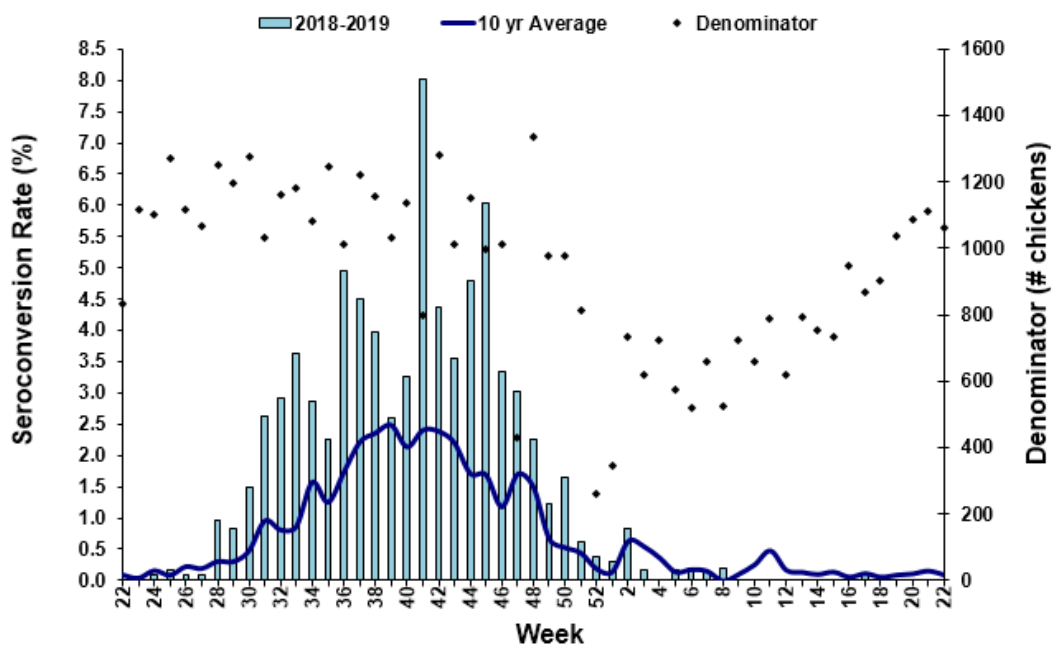
Three sentinel chickens tested positive for antibodies to EEEV this week in Polk and Walton counties.

County	Collection Date	Seroconversion Rates (%)					County Totals		
		Flavi	SLEV	WNV	Alpha	EEEV	HJV	Collection Week	YTD
Polk	5/21				2.78	2.78		1 EEEV	1 EEEV
Walton	5/20				1.43	1.43		2 EEEV	1 WNV, 20 EEEV

Sentinel Seroconversions to EEEV in Florida, 2018-2019



Sentinel Seroconversions to WNV in Florida, 2018-2019



Mosquito Pools

No mosquito pools tested positive for EEEV, WNV, or Zika this week.

County	Collection Date	Result	Species	County YTD

Dead Birds

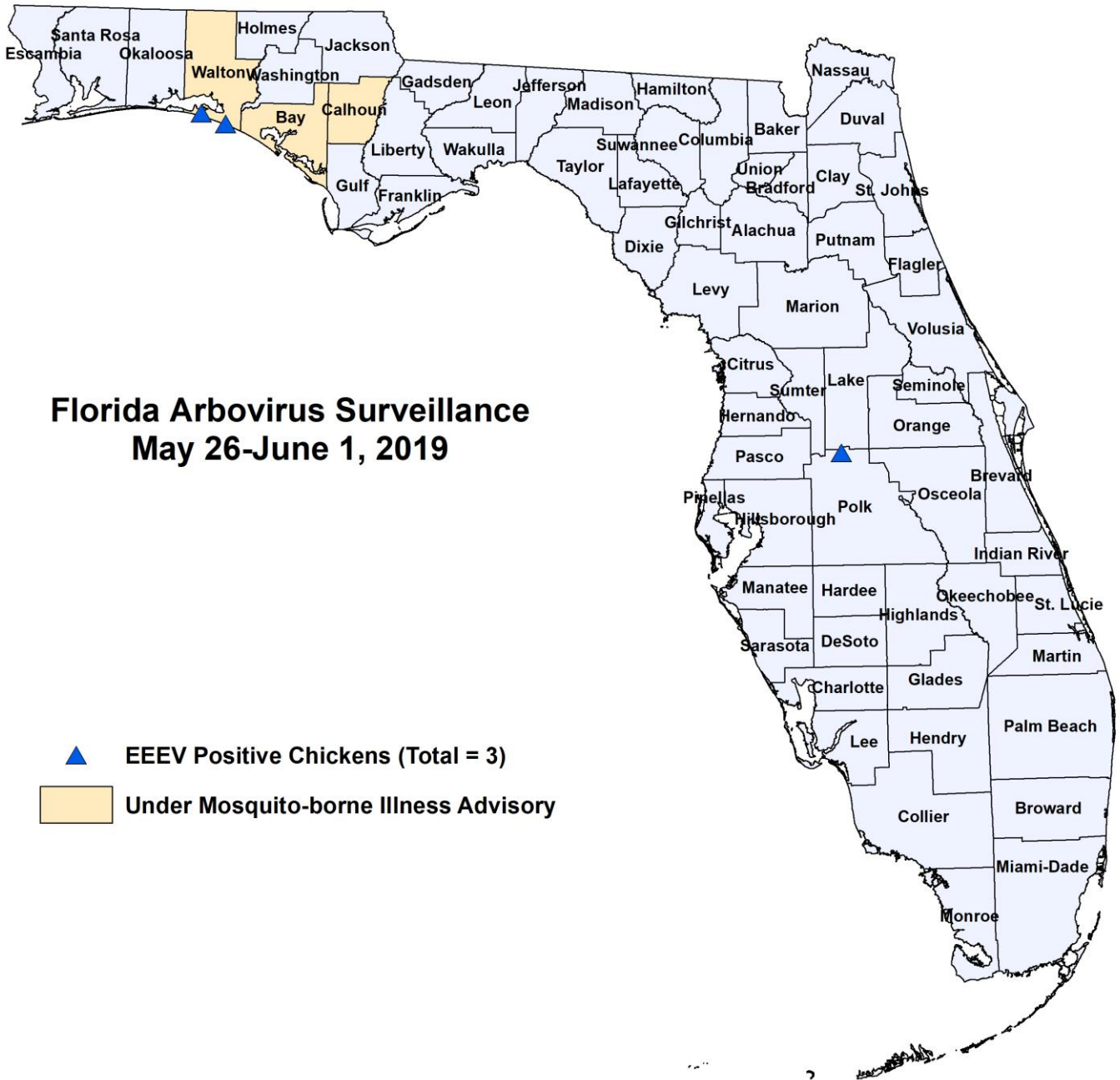
The Fish and Wildlife Conservation Commission (FWC) collects reports of dead birds, which can be an indication of arbovirus circulation in an area. This week, three reports representing a total of 14 dead birds, including one raptor, were received from three counties.

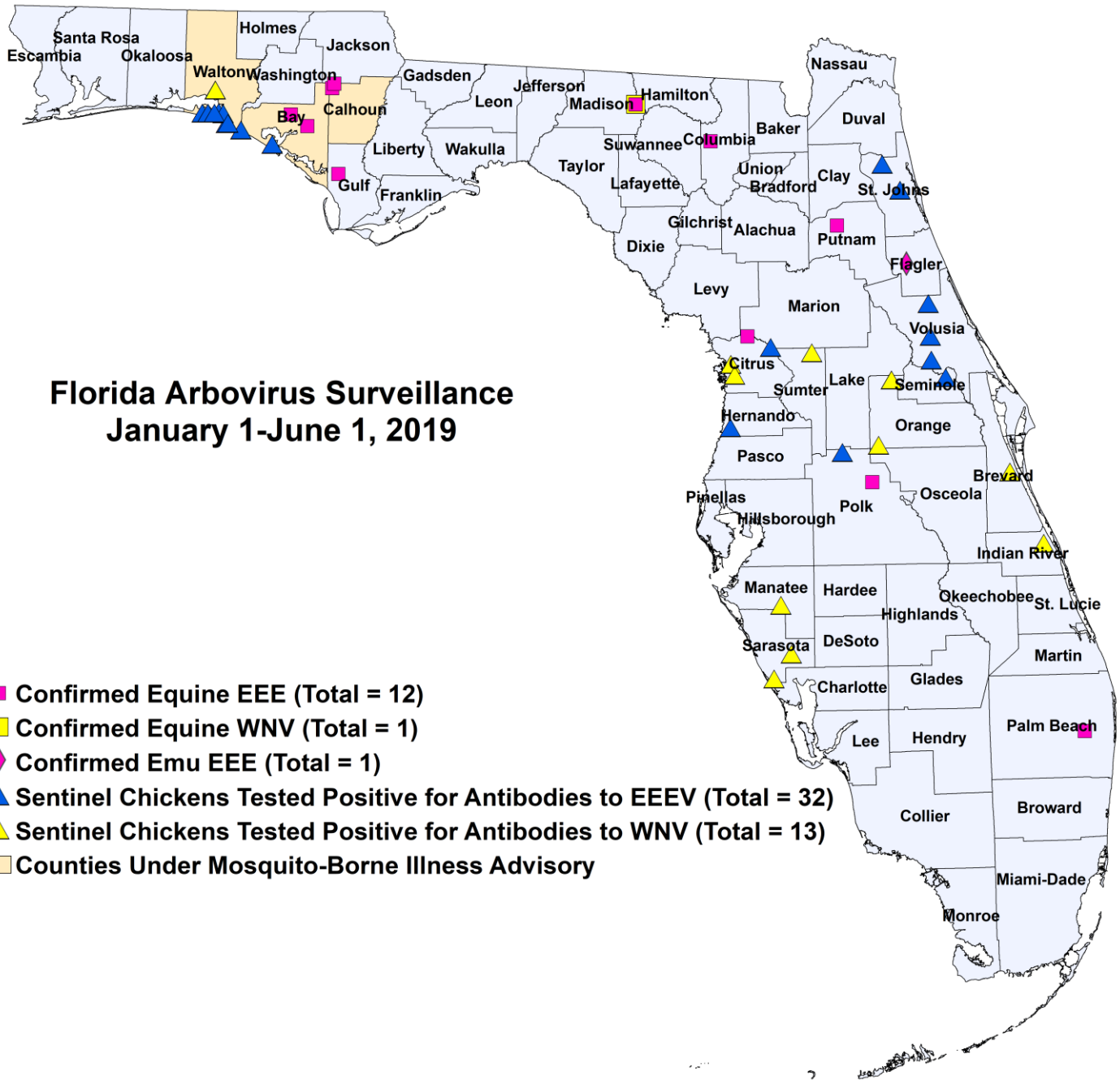
In 2019, 186 reports representing a total of 320 dead birds (10 crows, 6 jays, 51 raptors, and 10 doves) were received from 37 of Florida's 67 counties. Please note that FWC collects reports of birds that have died from a variety of causes, not only arboviruses. Dead birds should be reported to www.myfwc.com/bird/.

2019

County	Total Dead Birds	Crows	Jays	Raptors	Doves
Manatee	1	0	0	1	0
Pinellas	4	0	0	0	0
Polk	9	0	0	0	0

Maps





2019 Arbovirus Activity by County	
County	Arbovirus Activity
Bay	EEEV: 2 horses (2/24, 2/26), 3 sentinels (4/29)
Brevard	WNV: 1 sentinel (1/3)
Calhoun	EEEV: 3 horses (3/3, 3/22)
Columbia	EEEV: 1 horse (3/30)
Citrus	WNV: 2 sentinels (1/8, 1/29) EEEV: 1 horse (5/11), 1 sentinel (4/26)
Flagler	EEEV: 1 emu (3/17)
Gulf	EEEV: 1 horse (2/27)
Hernando	EEEV: 1 sentinel (3/4)
Indian River	WNV: 1 sentinel (1/10)
Madison	WNV: 1 horse (4/1) EEEV: 1 horse (4/1)

Manatee	WNV: 1 sentinel (2/5)
Orange	WNV: 4 sentinels (1/7, 1/10, 1/14)
Palm Beach	EEEV: 1 horse (2/25)
Polk	EEEV: 1 horse (4/24), 1 sentinel (5/21)
Putnam	EEEV: 1 horse (4/28)
Sarasota	WNV: 2 sentinels (2/15, 2/22)
Seminole	EEEV: 1 sentinel (4/8)
St. Johns	EEEV: 2 sentinels (4/8, 4/15)
Sumter	WNV: 1 sentinel (1/8)
Volusia	EEEV: 3 sentinels (1/14, 1/22, 1/28)
Walton	WNV: 1 sentinel (4/23) EEEV: 20 sentinels (3/5, 3/11, 3/12, 3/18, 3/25, 3/26, 4/1, 4/9, 4/15, 4/23, 5/20)

Acknowledgements and Data Sources

Contributors: Andrea Morrison, PhD, MSPH, Dana Giandomenico, MPH, and Danielle Stanek, DVM, DOH Bureau of Epidemiology; Lea Heberlein-Larson, Maribel Castaneda, and Valerie Mock, DOH Bureau of Public Health Laboratories; Carina Blackmore, DVM, PhD, DOH Division of Disease Control and Health Protection.

For more surveillance information, please see the DOH website at: www.floridahealth.gov/diseases-and-conditions/mosquito-borne-diseases/surveillance.html

For arbovirus surveillance information for the United States, please see the Centers for Disease Control and Prevention website at: www.cdc.gov/ncidod/dvbid/westnile/surv&control.htm

Case tallies included in the weekly Florida arbovirus surveillance report include confirmed and probable cases for EEE, WNV infection, SLE, dengue, chikungunya, and malaria by date of onset. Suspect cases are not included. Activity is mapped by county of exposure rather than county of residence. Case definitions being used in Florida are consistent with national criteria provided by the Council of State and Territorial Epidemiologists (CSTE) and may be viewed at: www.floridahealth.gov/diseases-and-conditions/disease-reporting-and-management/disease-reporting-and-surveillance/index.html. Case tallies reported by CDC do not include suspect cases and cases are reported by patient state of residence rather than where the exposure occurred. Data is provided by county health departments, Department of Health Bureau of Public Health Laboratories, Department of Agriculture and Consumer Services, mosquito control agencies, Florida Fish and Wildlife Conservation Commission, medical providers and veterinarians. Equine cases are provided by the Department of Agriculture and Consumer Services.