



Florida Arbovirus Surveillance Week 31: July 27-August 2, 2025

Arbovirus surveillance in Florida includes endemic mosquito-borne viruses such as West Nile virus (WNV), Eastern equine encephalitis virus (EEEV), and St. Louis encephalitis virus (SLEV), as well as exotic viruses such as dengue virus (DENV), chikungunya virus (CHIKV), Zika virus (ZIKV), and California encephalitis group viruses (CEV). Malaria, a parasitic mosquito-borne disease is also included. During the period of July 27-August 2, 2025, the following arboviral activity was recorded in Florida.

WNV activity: No human cases of WNV infection were reported this week. No horses with WNV infection were reported this week. One sentinel chicken tested positive for antibodies to WNV in Brevard County. In 2025, positive samples from five asymptomatic blood donors, one horse, and 35 sentinel chickens have been reported from 16 counties.

SLEV activity: No human cases of SLEV infection were reported this week. No sentinel chickens tested positive for antibodies to SLEV this week. In 2025, positive samples from two sentinel chickens have been reported from two counties.

EEEV activity: No human cases of EEEV infection were reported this week. No horses with EEEV infection were reported this week. Two sentinel chickens tested positive for antibodies to EEEV in Hernando and Orange counties. In 2025, positive samples from six horses, two emus, one emu flock, and 34 sentinel chickens have been reported from 15 counties.

International Travel-Associated Dengue: Four cases of dengue were reported this week in persons that had international travel. In 2025, 122 travel-associated dengue cases have been reported.

Dengue Cases Acquired in Florida: Four cases of locally acquired dengue were reported this week. In 2025, positive samples from eight humans and one mosquito pool have been reported from two counties.

International Travel-Associated Chikungunya Fever Cases: No cases of chikungunya fever were reported this week in persons that had international travel. In 2025, four cases of travel-associated chikungunya fever have been reported.

Chikungunya Fever Cases Acquired in Florida: No cases of locally acquired chikungunya fever were reported this week. In 2025, no cases of locally acquired chikungunya fever have been reported.

International Travel-Associated Oropouche Fever cases: No cases of Oropouche fever were reported this week in persons that had international travel. In 2025, no cases of travel-associated Oropouche fever have been reported.

International Travel-Associated Zika Fever Cases: No cases of Zika fever were reported this week in persons that had international travel. In 2025, no travel-associated Zika fever cases have been reported.

Zika Fever Cases Acquired in Florida: No cases of locally acquired Zika fever were reported this week. In 2025, no cases of locally acquired Zika fever have been reported.

Advisories/Alerts: Lafayette and St. Johns counties are currently under a mosquito-borne illness advisory. Brevard, Escambia, and Miami-Dade counties are currently under a mosquito-borne illness alert. No other counties are currently under a mosquito-borne illness advisory or alert.

There are currently multiple travel health notices from the Centers for Disease Control and Prevention related to mosquito-borne diseases.

Dengue			Oropouche	Yellow Fever	Chikungunya			Malaria
Africa and the Middle East	Americas	Asia and the Pacific Islands	Americas	Americas	Africa	Americas	Asia	Africa
Comoros	Colombia	Austral Islands	Brazil (Espírito Santo)	Bolivia	Kenya	Bolivia (Santa Cruz)	China	Ethiopia
Samoa	Ecuador	Bangladesh	Brazil	Brazil	Madagascar			
Sudan	Guatemala	Cook Islands, NZ	Colombia	Colombia	Mauritius			
	Panama	Fiji	Cuba	Peru	Mayotte			
		French Polynesia	Panama (Darién)		Réunion			
		Kiribati	Panama		Somalia			
		Marquesas Islands	Peru		Sri Lanka			
		Mali						
		Philippines						
		Tonga						
		Tuvalu						

Level 1 Travel Health Notice, Level 2 Travel Health Alert: wwwnc.cdc.gov/travel/notices.

For a map of arboviral disease activity in the United States visit: <https://www.cdc.gov/fight-the-bite/at-risk/index.html>.

2025 Human Case Summary

West Nile Virus Illness Acquired in Florida: In 2025, five asymptomatic blood donors have been reported in Escambia (June, July), Miami-Dade (July), and St. Johns (June) counties.

2025 International Travel-Associated Chikungunya Cases: Four cases with onset in 2025 have been reported in individuals with travel history to a chikungunya-endemic area in the two weeks prior to onset. Counties reporting cases were: Broward (2), Lake, and Miami-Dade. Countries of origin were: Bolivia, Brazil, Indonesia, and Sri Lanka.

2025 International Travel-Associated Dengue Cases: One hundred twenty-two cases with onset in 2025 have been reported in individuals with travel history to a dengue-endemic area in the two weeks prior to onset. Counties reporting cases were: Bay, Brevard (2), Broward (10), Clay, Collier (2), Duval (3), Escambia, Hillsborough (6), Lake (3), Lee (4), Manatee, Marion, Miami-Dade (63), Okeechobee (3), Orange (6), Osceola (2), Palm Beach (5), Pasco, Pinellas (3), Polk, St. Johns, St. Lucie, and Volusia. Seven cases were reported in non-Florida residents. In 2025, 95 cases of dengue reported in Florida have been serotyped by PCR. Please see the table below for a breakdown of cases by country of origin and serotype.

Country of Exposure	DENV-1	DENV-2	DENV-3	DENV-4	Unknown	Total
Antigua and Barbuda			1			1
Argentina	2					2
Bahamas			1			1
Bonaire			1			1
Brazil	1	4	1		3	9
Colombia	1	1	1			3
Cuba		1	3	46	11	61
Curacao			1			1
Dominica			1			1
Dominican Republic			1			1
Ecuador			3			3
El Salvador			1			1
French Polynesia					1	1
Guatemala			2			2
Guyana		2			2	4

Country of Exposure	DENV-1	DENV-2	DENV-3	DENV-4	Unknown	Total
Mexico			7			7
Nicaragua			3		1	4
Peru			1			1
Philippines					1	1
Puerto Rico			8		1	9
Sri Lanka					1	1
St. Barts			3			3
St. Barts/St. Martin			1			1
US Virgin Islands		1			2	3
Total	4	9	40	46	23	122

2025 Dengue Cases Acquired in Florida: In 2025, eight cases of locally acquired dengue have been reported in Brevard (6) and Miami-Dade (2) counties with onset in February, May, June, and July. Seven cases have been serotyped by PCR. Please see the table below for a breakdown of cases by county and serotype.

County of Exposure	DENV-3	DENV-4	Unknown	Total
Brevard	5		1	6
Miami-Dade	1	1		2
Total	6	1	1	8

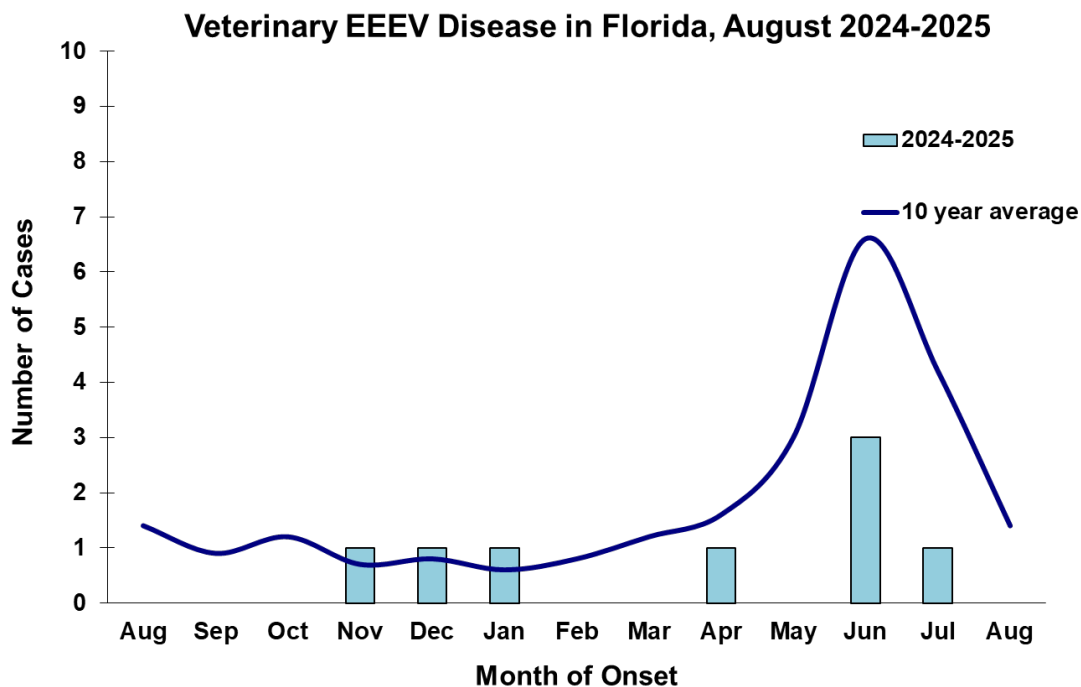
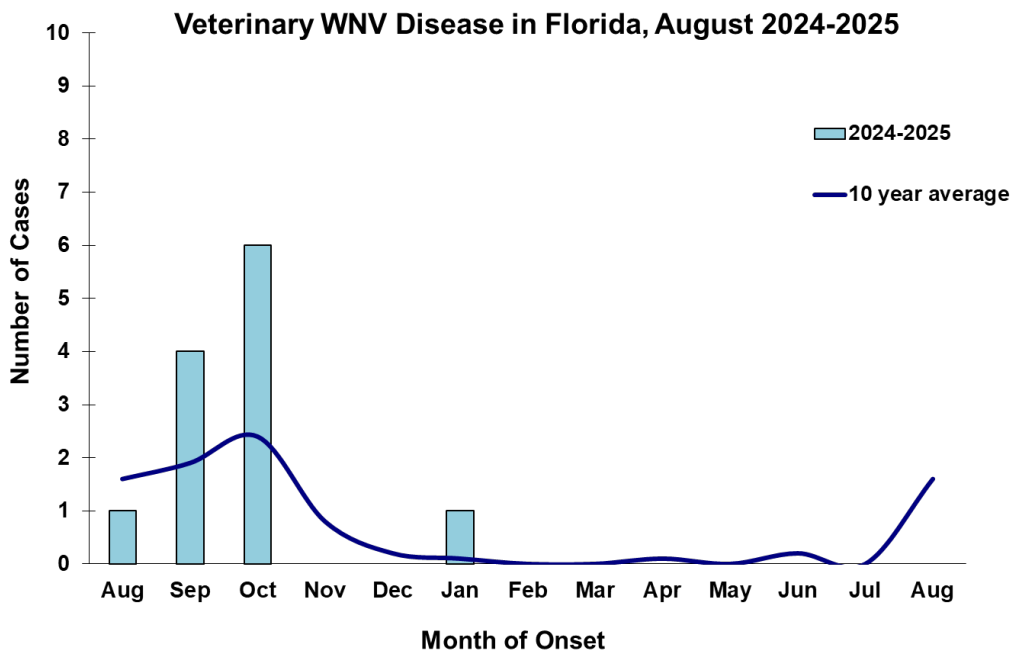
2025 International Travel-Associated Malaria Cases: Twenty-eight cases with onset in 2025 have been reported in individuals with travel history to a malaria-endemic area. Counties reporting cases were: Alachua, Brevard, Broward (3), Collier, Duval, Hillsborough, Lake, Marion (2), Miami-Dade (4), Nassau (2), Orange (3), Palm Beach (3), Polk (2), St. Lucie (2), and Volusia. Nine cases were reported in non-Florida residents. Please see the table below for a breakdown of cases by country of origin and *Plasmodium* species.

Country of Exposure	<i>Plasmodium falciparum</i>	<i>Plasmodium vivax</i>	Total
Africa	3		3
Angola	1		1
Cameroon	1		1
Central America		1	1
Central/South America		2	2
Côte D'Ivoire	1		1
Gambia	1		1
Guinea	1		1
Haiti	1		1
Honduras		1	1
India		1	1
Liberia	1		1
Malawi	1		1
Nigeria	9		9
Rwanda	1		1
Siera Leone	1		1
Uganda	1		1
Total	23	5	28

Veterinary Cases**

**Veterinary cases are reported by date of onset. Only mammalian veterinary cases are included in the graphs.

No veterinary cases were reported this week.



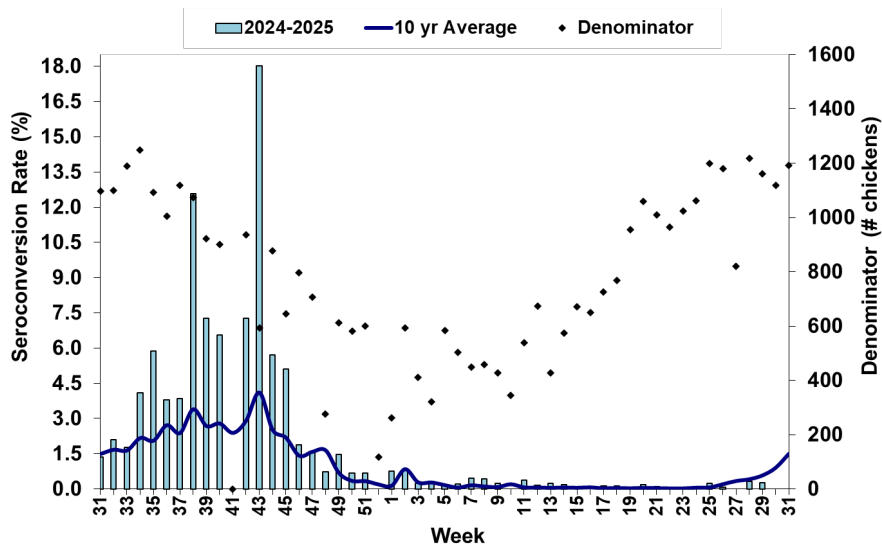
Sentinel Chickens

The table below is for the reporting of confirmatory laboratory results from this week. Some of the samples were collected at earlier dates. The date of collection is recorded for samples collected on that day along with the total number of positives and the corresponding seroconversion rate for the week the sample was collected.

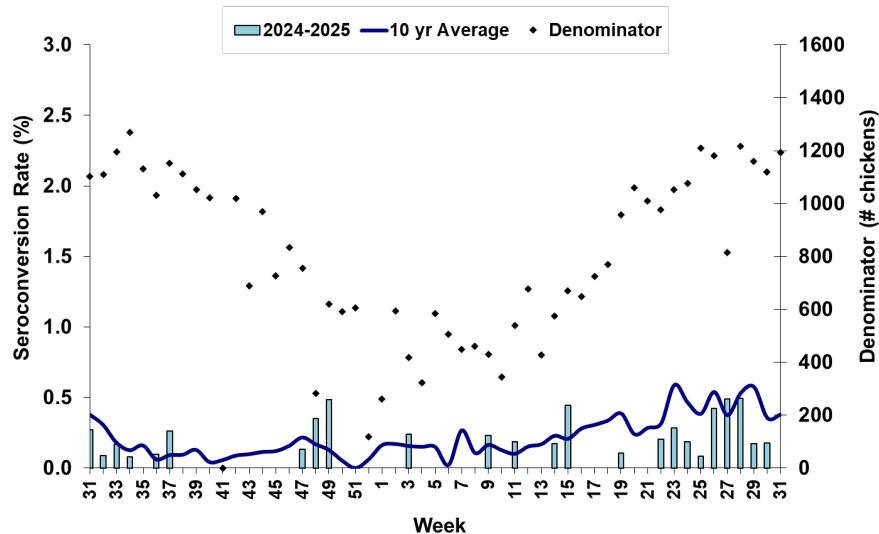
One sentinel chicken tested positive for antibodies to WNV in Brevard County. Two sentinel chickens tested positive for antibodies to EEEV in Hernando and Orange counties.

County	Collection Date	Seroconversion Rates (%)						County Totals	
		Flavi	SLEV	WNV	Alpha	EEEV	HJV	Collection Week	YTD
Brevard	7/18/2025	1.41	1.41					1 WNV	1 SLEV, 2 WNV
Hernando	7/21/2025				3.23	3.23		1 EEEV	1 EEEV
Orange	7/21/2025				0.88	0.88		1 EEEV	10 EEEV, 1 WNV

Sentinel Seroconversions to WNV in Florida, 2024–2025



Sentinel Seroconversions to EEEV in Florida, 2024–2025



Mosquito Pools

One mosquito pool tested positive for dengue this week in Brevard County.

County	Collection Date	Result	Species	County YTD
Brevard	7/24/2025	1 DENV-3	<i>Ae. aegypti</i>	1 DENV-3

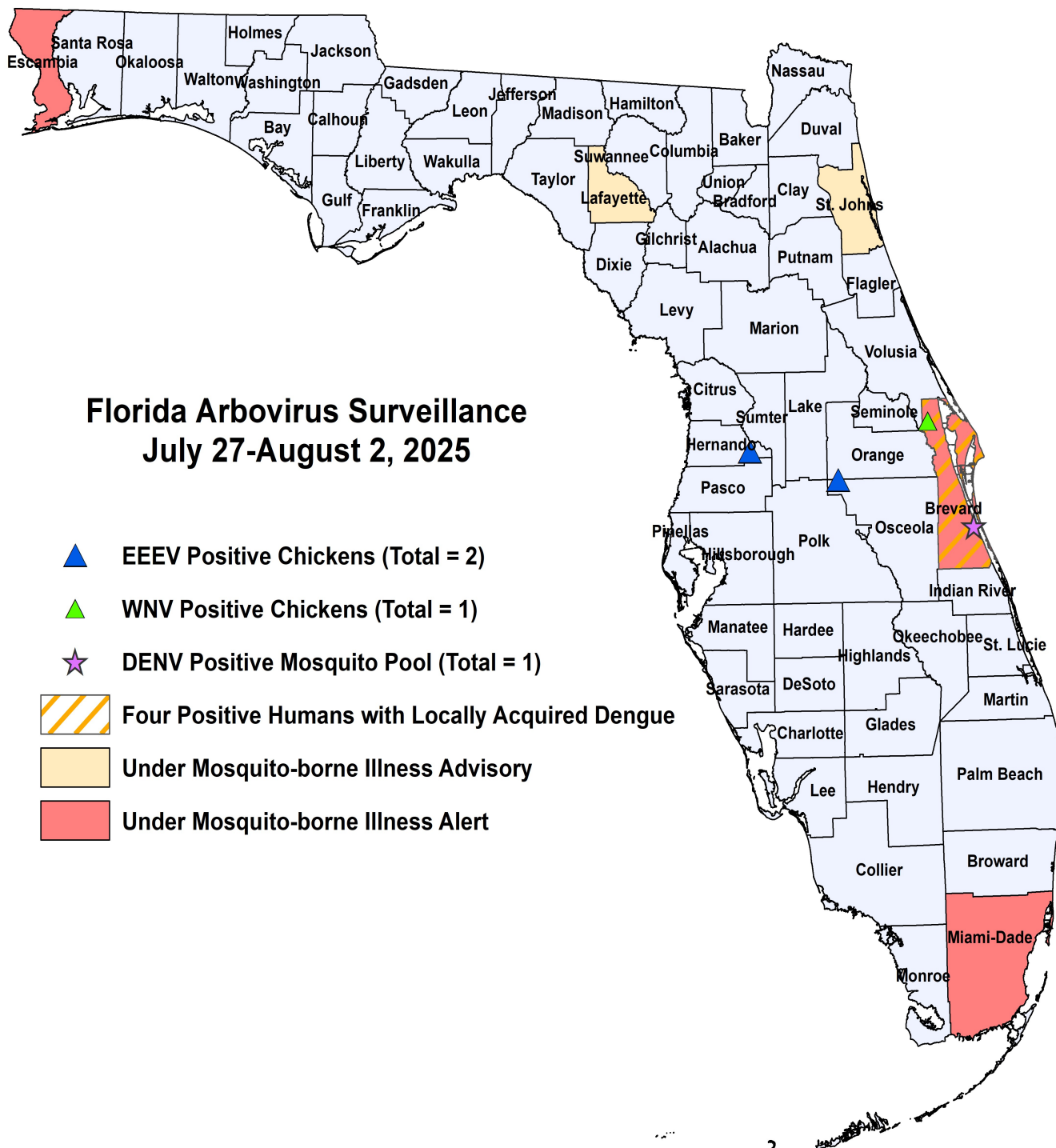
Dead Birds

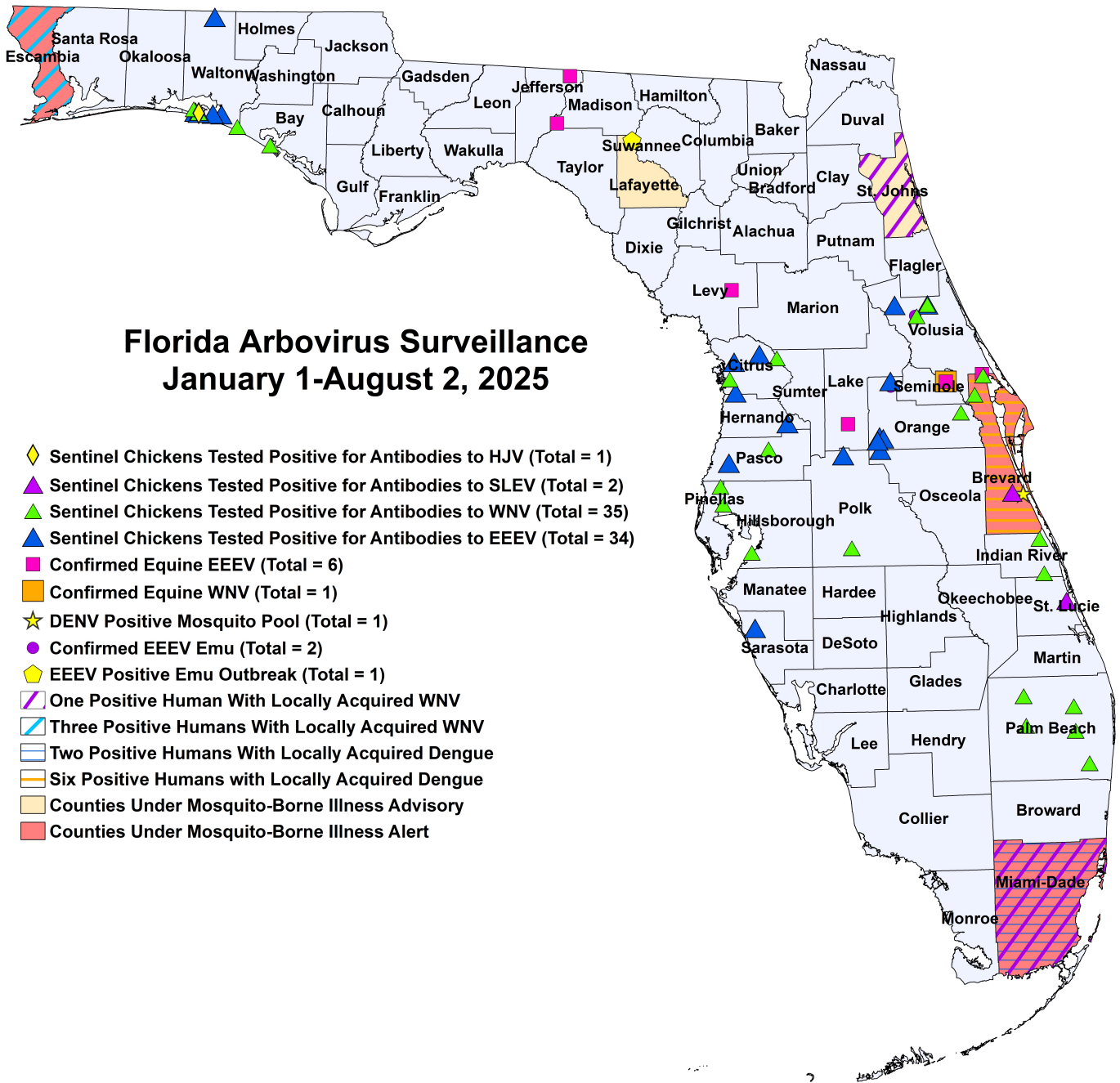
The Fish and Wildlife Conservation Commission (FWC) collects reports of dead birds, which can be an indication of arbovirus circulation in an area. This week, 19 reports representing a total of 72 dead birds, including 3 raptors and 43 doves, were received from 9 counties.

In 2025, 1043 reports representing a total of 2160 dead birds (68 crows, 42 jays, 237 raptors, 192 doves) were received from 58 of Florida's 67 counties.

2025

County	Total Dead Birds	Crows	Jays	Raptors	Doves
Bay	9	0	0	0	0
Charlotte	1	0	0	1	0
Clay	1	0	0	1	0
Collier	17	0	0	0	7
Duval	1	0	0	0	0
Escambia	1	0	0	0	0
Lee	2	0	0	0	0
Orange	1	0	0	1	0
Palm Beach	39	0	0	0	36





2025 Mosquito-Borne Disease Activity by County

County	Humans	Equines	Sentinel Chickens	Other
Bay			1 WNV (3/24)	
Brevard	6 dengue (May, July (5))	1 EEEV (7/18)	1 SLEV (7/9) 2 WNV (2/7), (7/18)	1 DENV-3 mosquito pool (<i>Ae. aegypti</i> 7/24)
Citrus			8 EEEV (3/11), (4/1), (4/8), (5/28), (6/24), (7/7), (7/9) 4 WNV (1/6), (2/10), (2/17)	
Escambia	3 asymptomatic WNV blood donors (June (2), July)			
Hernando			1 EEEV (7/21)	
Hillsborough			1 WNV (4/21)	
Indian River			2 WNV (1/2)	
Jefferson		1 EEEV (6/12)		
Lafayette				1 EEEV emu flock outbreak (7/6 for the first emu)
Lake		1 EEEV (4/2)		
Levy		1 EEEV (6/20)		
Madison		1 EEEV (6/30)		
Miami-Dade	2 dengue (February, June) 1 asymptomatic WNV blood donor (July)			
Orange			10 EEEV (2/24), (4/7), (6/2), (6/9), (6/16), (6/23), (6/30), (7/14), (7/21) 1 WNV (3/31)	1 EEEV emu (1/1)
Palm Beach			15 WNV (1/7), (1/21), (1/27), (2/10), (2/17), (2/24), (3/10), (3/17), (4/29), (5/13), (6/16)	
Pasco			1 EEEV (7/7) 1 WNV (1/13)	
Pinellas			2 WNV (1/6), (7/7)	
Polk			2 EEEV (6/2), (6/9) 1 WNV (6/16)	
Sarasota			1 EEEV (7/8)	
Seminole		1 EEEV (1/5) 1 WNV (1/5)		
St. Johns	1 asymptomatic WNV blood donor (June)			
St. Lucie			1 SLEV (7/10)	
Volusia			2 EEEV (1/14), (4/8) 2 WNV (6/23), (7/7)	1 EEEV emu (1/2)
Walton			9 EEEV (5/5), (6/2), (6/23), (6/30), (7/7), (7/14) 1 HJV (6/23) 3 WNV (5/19), (7/14)	

Acknowledgements and Data Sources

Contributors: Andrea Morrison, PhD, MSPH, Rebecca Zimler, PhD, MPH, Olga Ospina, MPH, and Danielle Stanek, DVM, DOH Bureau of Epidemiology; Lea Heberlein, DrPH; Peter Dumoulin, PhD, Maribel Castaneda, and Amanda Davis, BS; DOH Bureau of Public Health Laboratories.

For more surveillance information, please see the DOH website at: www.floridahealth.gov/diseases-and-conditions/mosquito-borne-diseases/surveillance.html

For arbovirus surveillance information for the United States, please see the Centers for Disease Control and Prevention website at: www.cdc.gov/ncidod/dvbid/westnile/surv&control.htm

Case tallies included in the weekly Florida arbovirus surveillance report include confirmed and probable cases for EEE, WNV infection, SLE, dengue, chikungunya, and malaria by date of onset. Suspect cases are not included. Activity is mapped by county of exposure rather than county of residence. Case definitions being used in Florida are consistent with national criteria provided by the Council of State and Territorial Epidemiologists (CSTE) and may be viewed at: www.floridahealth.gov/diseases-and-conditions/disease-reporting-and-management/disease-reporting-and-surveillance/index.html. Case tallies reported by CDC do not include suspect cases and cases are reported by patient state of residence rather than where the exposure occurred. Data is provided by county health departments, Department of Health Bureau of Public Health Laboratories, Department of Agriculture and Consumer Services, mosquito control agencies, Florida Fish and Wildlife Conservation Commission, medical providers and veterinarians. Equine cases are provided by the Department of Agriculture and Consumer Services.