



Florida Arbovirus Surveillance Week 43: October 23 – October 29, 2011

Arbovirus surveillance in Florida includes endemic mosquito-borne viruses such as West Nile virus (WNV), Eastern equine encephalitis virus (EEEV), St. Louis encephalitis virus (SLEV), and Highlands J virus (HJV) and exotic viruses such as Dengue virus (DENV) and California encephalitis group viruses (CEV). Malaria, a non-viral mosquito-borne disease is also included. During the period October 23 – October 29, 2011, the following arboviral activity was recorded in Florida:

DENV activity: No new cases of locally acquired dengue were reported this week. In 2011, there have been two locally acquired cases each in Miami-Dade and Palm Beach counties, and one case each in Martin and Hillsborough counties.

EEEV activity: No EEEV activity was reported this week. In 2011, positive samples from four equines, 26 sentinel chickens and 19 live wild birds have been received from 12 counties.

WNV activity: No new cases of locally acquired WNV infection were reported this week. Seventeen sentinel chickens in Brevard, Charlotte, Hernando, Hillsborough, Lee, Leon, Manatee, Putnam and Sarasota counties tested positive for antibodies to WNV. In 2011, positive samples from 25 humans, 142 sentinel chickens, three equines and one live wild bird (flavivirus positive) have been received from 22 counties.

SLEV activity: Six sentinel chickens in Pinellas and Manatee counties tested positive for antibodies to SLEV. In 2011, positive samples from 42 sentinel chickens have been received from five counties.

HJV activity: One sentinel chicken in Orange County tested positive for antibodies to HJV. In 2011, positive samples from 11 sentinel chickens have been received from four counties.

Advisories/Alerts: Duval and Palm Beach counties are under mosquito-borne illness alert. Clay, Hillsborough, Leon, Miami-Dade, Martin, Holmes and Pinellas counties are under mosquito-borne illness advisory. The Bahamas has also issued an alert due to high dengue activity: <http://wwwnc.cdc.gov/travel/notices/outbreak-notice/dengue-bahamas.htm>

Year to Date Human Case Summary

West Nile Virus Infection Acquired in Florida: Twenty-two human cases of WNV infection have been acquired in Florida in 2011 with onset in June (1), July (8), Aug (8), Sep (4) and Oct (1). Nineteen cases were exposed in Duval; 17 of these cases were Duval County residents, one was a Leon County resident, and one case was a New Jersey resident. Three additional cases were acquired in Clay (1) Leon (1) and Miami-Dade (1) counties. Three positive asymptomatic blood donors were reported in Duval County.

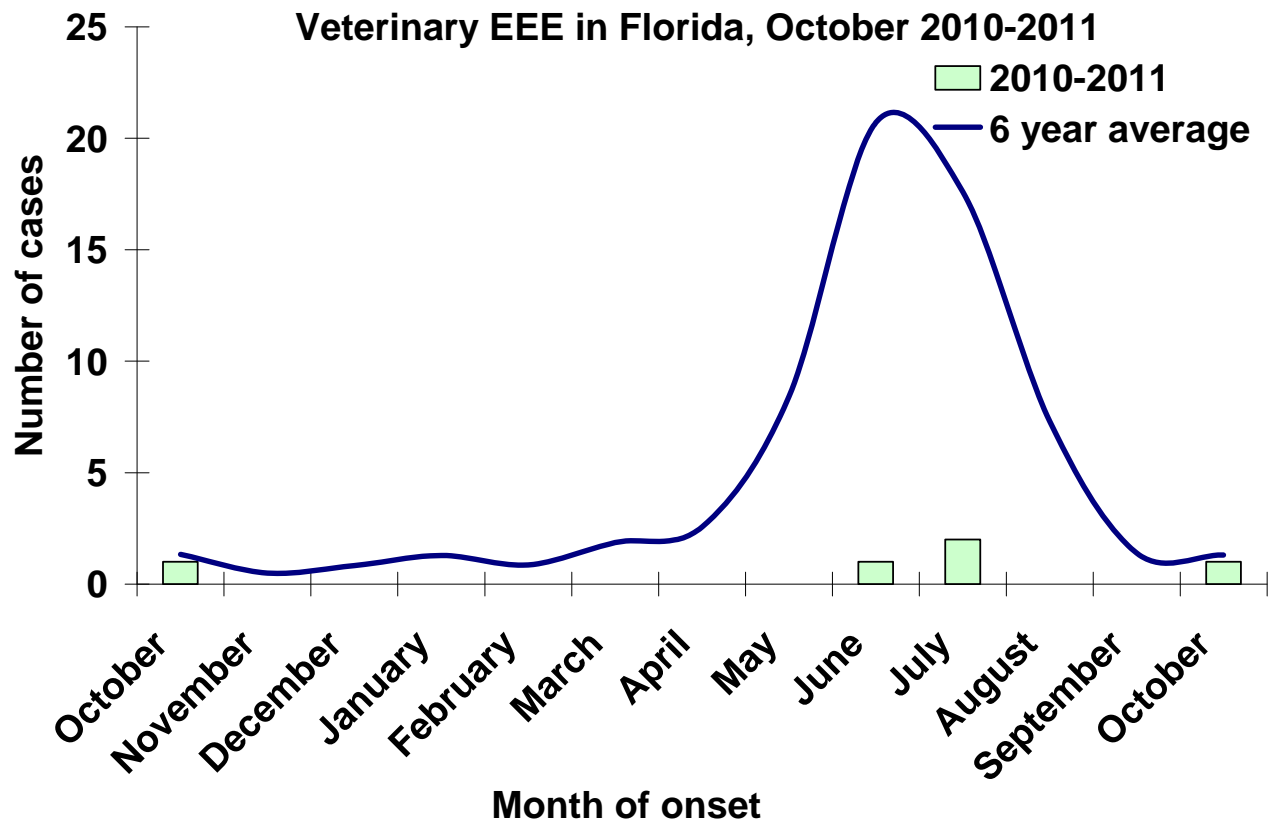
Dengue Acquired in Florida: In 2011, six cases of locally acquired dengue have been reported in Miami-Dade (January and August), Martin (July), Hillsborough (September) and Palm Beach (2 cases in September) counties.

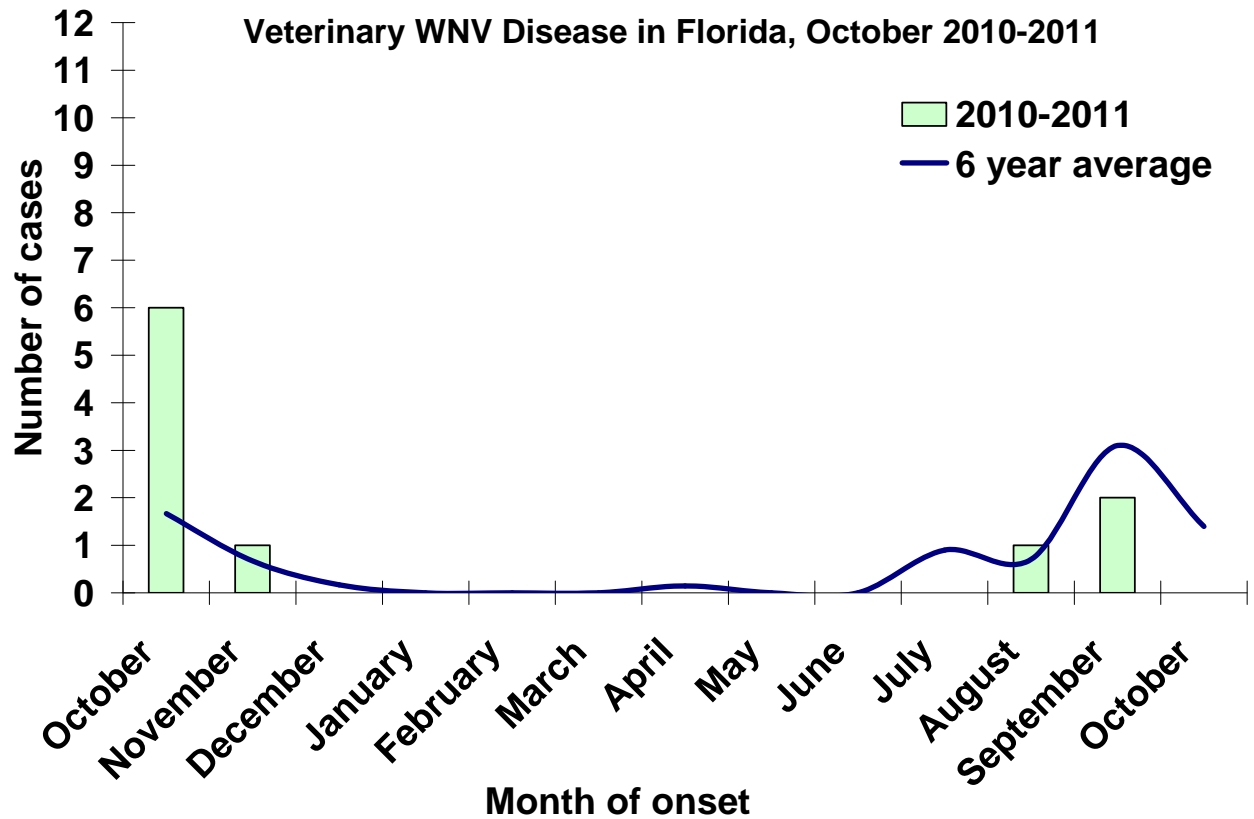
Imported Dengue: Forty-five cases of dengue with onset in 2011 have been reported in individuals with travel history to a dengue endemic country in the two weeks prior to onset. Countries of origin were Aruba, Bahamas (9), Bangladesh (2), Brazil (2), Colombia, Cuba, Dominican Republic, Guyana, Haiti (2), India, Jamaica (2), Nicaragua (2), Pakistan, Panama (2), Puerto Rico (10), St. Lucia (2), Trinidad (3), Turks and Caicos Islands and Venezuela. Counties reporting cases were Brevard, Broward (3), Clay, Flagler (2), Gulf, Hendry, Hillsborough (3), Lee, Marion, Martin, Miami-Dade (11), Orange (4), Palm Beach (9), Pasco, Pinellas, St. Johns (3) and Washington.

Imported Malaria: Eighty-two imported cases of malaria with onset in 2011 have been reported. Countries of origin were: Afghanistan (4), Brazil, Cameroon, East Timor, Ethiopia (2), Eritrea (2), French Guiana, Gabon, Ghana (6), Guinea Conakry, Guyana, Haiti (21), Honduras (4), India (13), Kenya, Liberia (2), Libya, Mali (2), Nigeria (7), New Guinea, Pakistan, Peru, Rwanda, Senegal, Uganda (4) and Venezuela. Counties reporting cases were: Alachua (2), Brevard (4), Broward (10), Citrus, Collier (2), Duval (8), Escambia, Hillsborough (7), Indian River, Lee (4), Leon (2), Miami-Dade (17), Manatee (3), Okaloosa, Orange (4), Palm Beach (6), Pasco, Pinellas, Santa Rosa, Seminole, St. Johns and St. Lucie (4).

Veterinary Cases

No positive horses were reported this week.



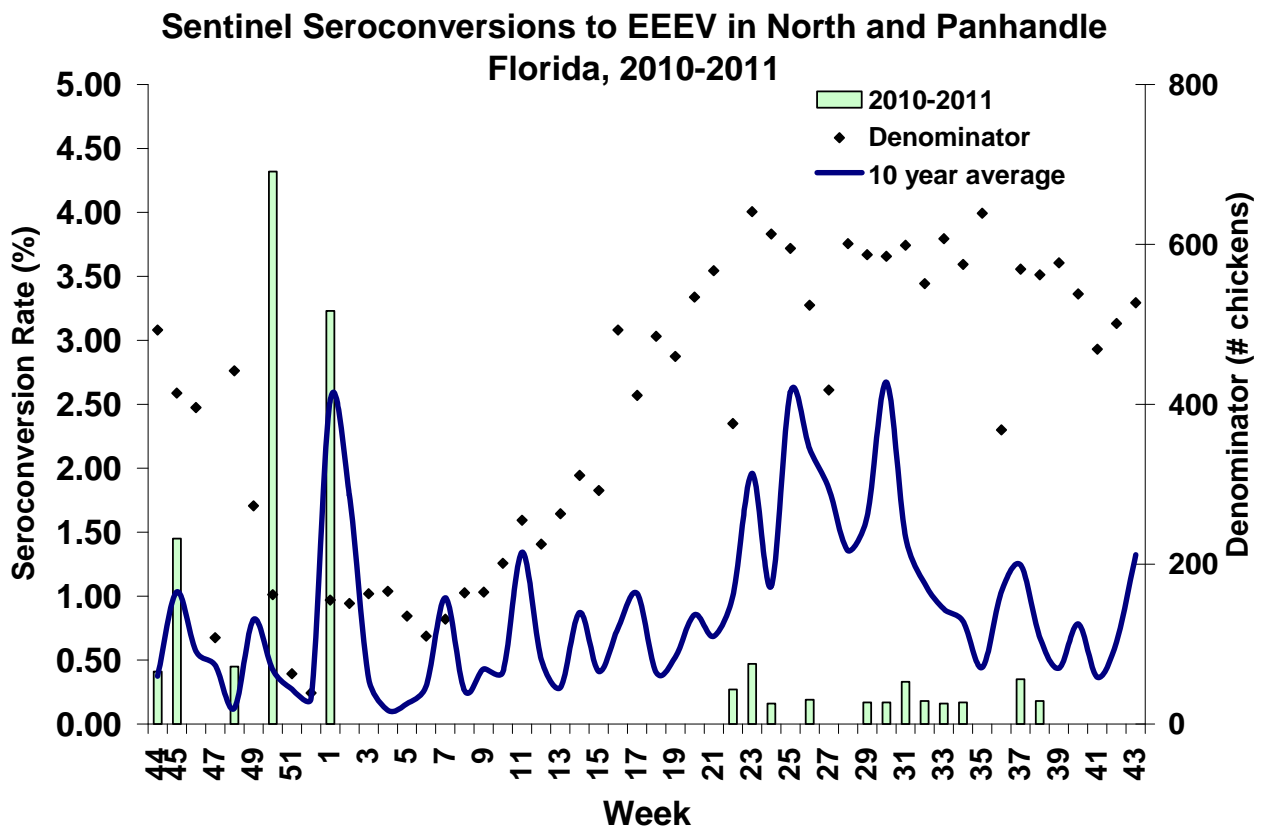


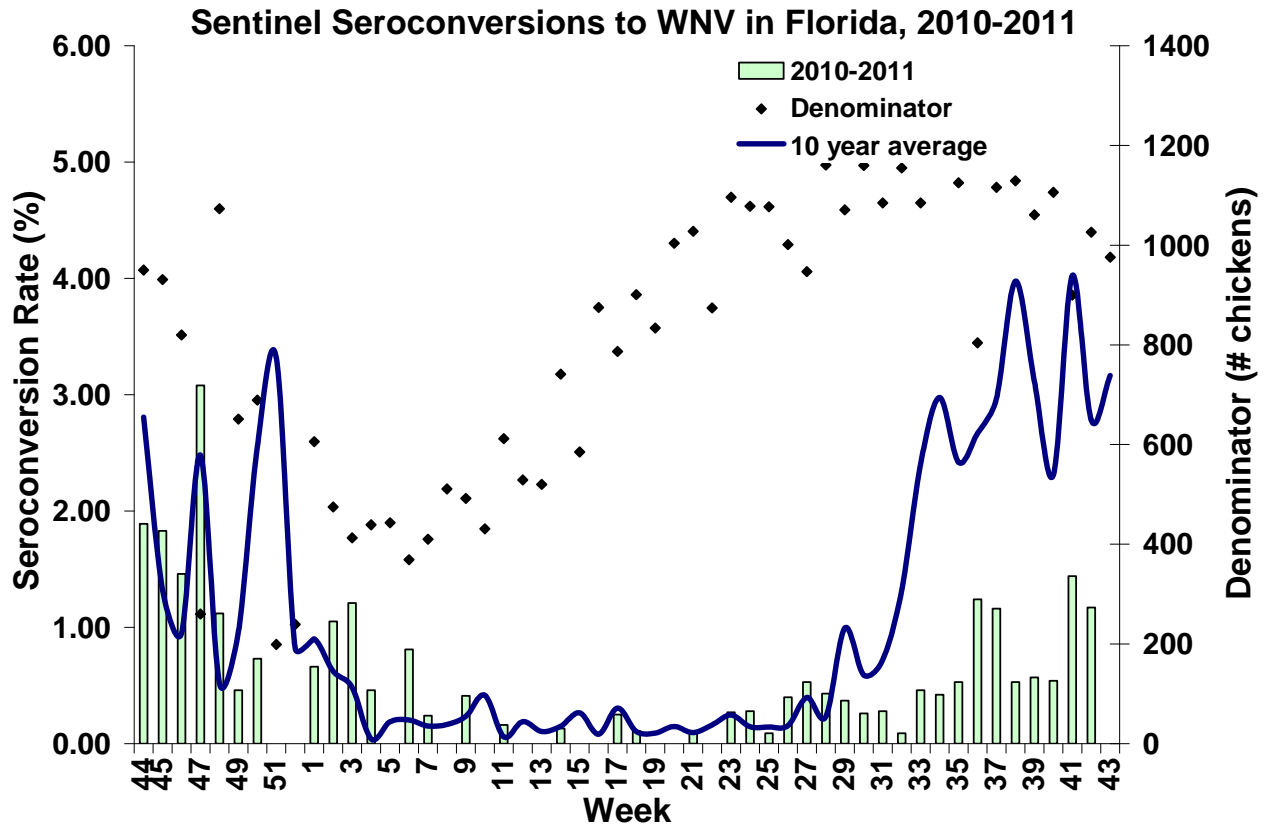
Sentinel Chickens

Seventeen sentinel chickens in Brevard, Charlotte, Hernando, Hillsborough, Lee, Leon, Manatee, Putnam and Sarasota counties tested positive for antibodies to WNV. Six sentinel chickens in Pinellas and Manatee counties tested positive for antibodies to SLEV. One sentinel chicken in Orange County tested positive for antibodies to HJV. Seroconversion rates are calculated by week and include previously reported results.

County	Collection Date	Seroconversion Rates (%)				Week	County Totals YTD
		SLEV	WNV	EEEV	HJV		
Brevard	10/12/11		1.61			1 WNV	2 EEEV, 1 WNV
Charlotte	10/14/11		12.50			2 WNV	5 WNV
Hernando	10/17/11		5.00			1 WNV	2 WNV, 1 EEEV
Hillsborough	10/05/11	1.37	4.11			3 WNV, 1 SLEV	
Hillsborough	10/18/11		7.04			5 WNV	30 WNV, 8 SLEV
Lee	10/17/11		3.57			2 WNV	14 WNV
Leon	10/17/11		4.76			2 WNV	19 WNV
Manatee	09/28/11	2.67				2 SLEV	
Manatee	10/19/11	1.45	1.45			1 WNV, 1 SLEV	8 WNV, 4 SLEV

County	Collection Date	Seroconversion Rates (%)				County Totals	
		SLEV	WNV	EEEV	HJV	Week	YTD
Orange/Reedy	10/06/11		2.56		2.50	1 WNV, 1 HJV	3 EEEV, 3 HJV, 13WNV
Pinellas	09/12/11	7.55	5.66			3 WNV, 4 SLEV	
Pinellas	10/03/11	10.91				6 SLEV	
Pinellas	10/17/11	2.08				1 SLEV	28 SLEV, 6 WNV
Putnam	10/14/11		6.25			1 WNV	1 WNV
Sarasota	10/17/11		1.39			1 WNV	16 WNV





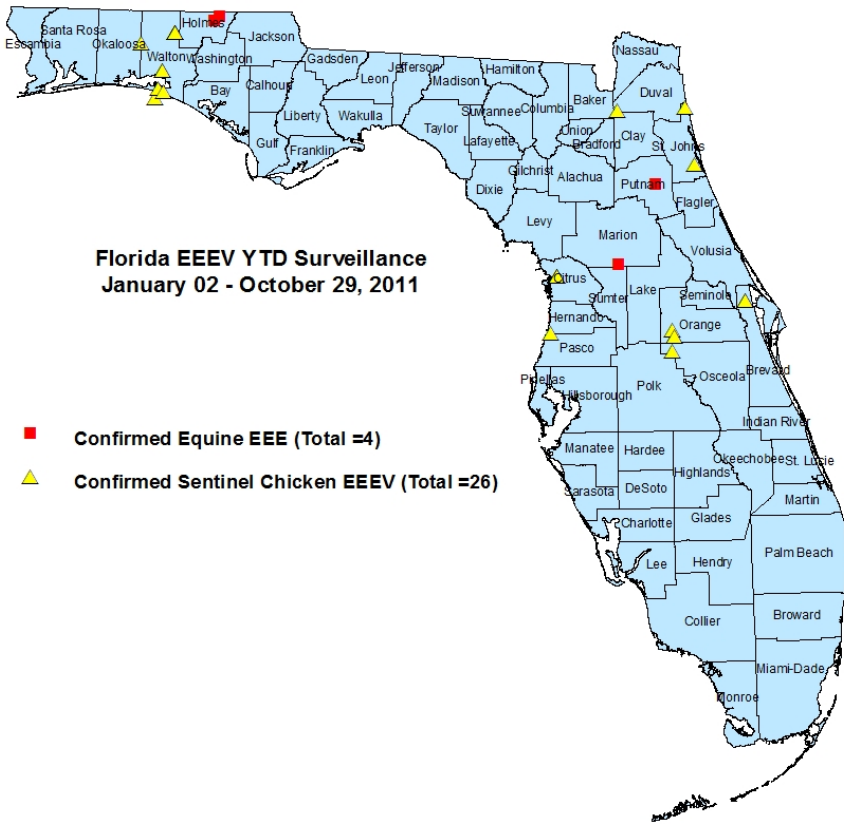
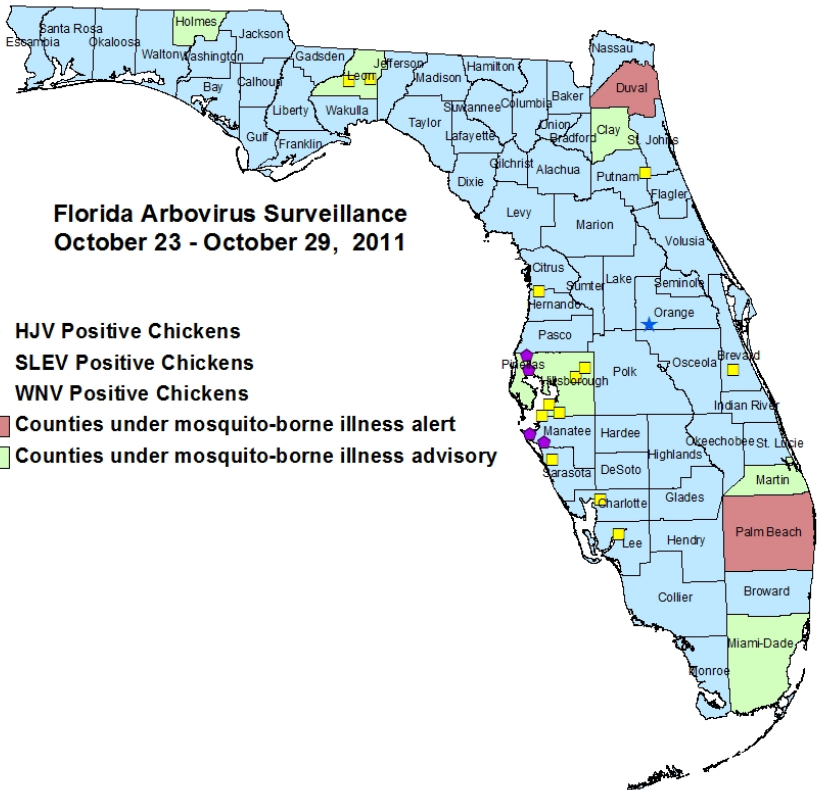
Live Wild Birds

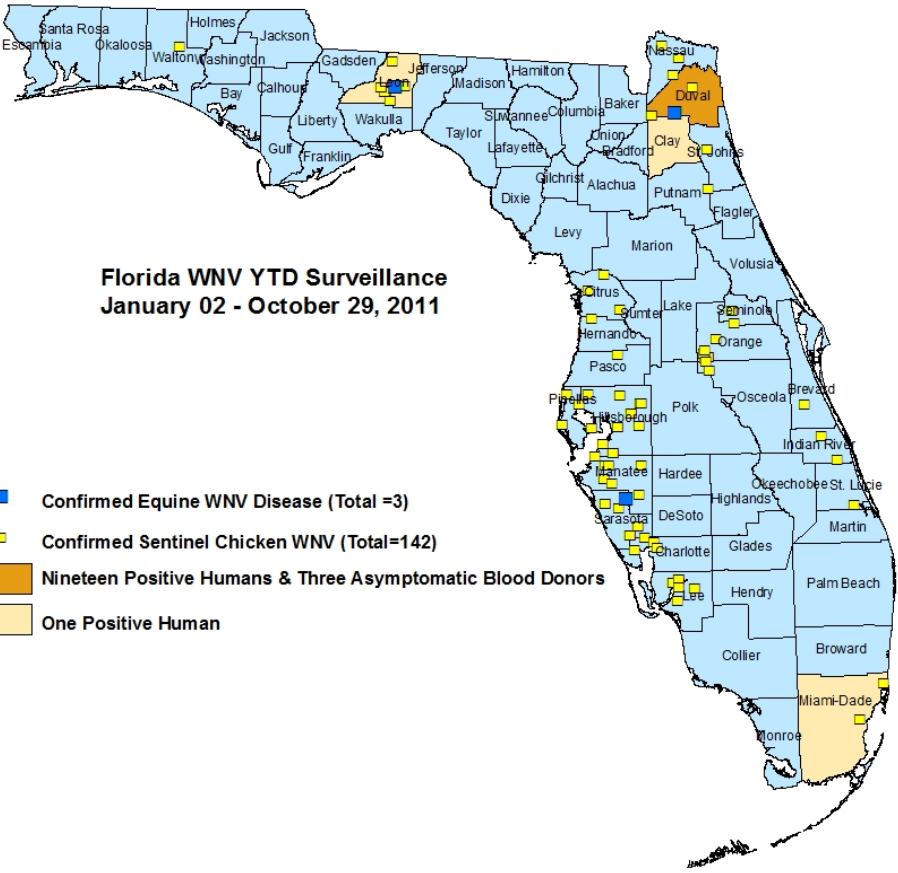
No positive live wild birds were reported this week.

Dead Birds

The Fish and Wildlife Conservation Commission (FWC) collects reports of dead birds, which can be an indication of arbovirus circulation in an area. This week, three reports representing four dead birds were received from three counties. One bird was identified as raptor; none were identified as crows or jays. In 2011, two hundred and eighty-two reports representing a total of 811 dead birds (37 crows, 50 jays, 59 raptors, 665 others) were received from 45 of Florida's 67 counties. Please note that FWC collects reports of birds that have died from a variety of causes, not only arboviruses. Dead birds should be reported to www.myfwc.com/bird/

Maps





YTD Arbovirus Activity by County

County	Arbovirus Activity
Brevard	WNV: 1 sentinel (10/12) EEEV: 2 sentinels (5/20, 5/27)
Citrus	WNV: 3 sentinels (1/3, 1/11) EEEV: 3 sentinels (8/15, 9/12, 9/19) HJV: 4 sentinels (9/12, 9/19, 9/27)
Charlotte	WNV: 5 sentinels (7/1, 9/9, 10/14)
Clay	WNV: 1 human (September),
Dade	DENV: 2 humans (acquired in Miami; January and August) WNV: 1 human (acquired in Miami; August), 2 sentinels (1/18, 6/22)
Duval	WNV: 22 humans including 3 asymptomatic blood donors [June (1), July (8), Aug (6), Sept (3), Oct (1)]; 4 sentinels (7/15, 9/16); 1 horse (9/21) EEEV: 1 sentinel (6/11)
Hernando	WNV : 2 sentinels (8/1, 10/17) EEEV: 1 sentinel (6/6)
Hillsborough	DENV : 1 human (acquired in Hillsborough County, September) WNV: 30 sentinels (1/4, 1/11, 1/18, 1/25, 2/9, 3/1, 7/19, 8/30, 9/13, 9/27, 10/5, 10/11, 10/18) SLEV: 8 sentinels (8/23, 9/13, 9/20, 10/5, 10/11)
Holmes	EEEV: 2 horses (7/3, 7/6)
Indian River	WNV: 2 sentinels (4/28, 8/18), SLEV: 1 sentinel (6/23)

Lee	WNV: 14 sentinels (6/13, 6/27, 7/11, 7/25, 8/20, 10/17)
Leon	WNV: 1 human (August), 19 sentinels (8/23, 8/30, 9/6, 9/12, 9/19, 9/26, 10/4, 10/17); 1 horse (9/11)
Manatee	WNV: 8 sentinels (4/4, 7/20, 8/31, 10/11, 10/19) SLEV: 4 sentinels (9/14, 9/28, 10/19)
Marion	EEEV: 1 horse (6/21)
Martin	DENV: 1 human (acquired in Martin County; July)
Nassau	WNV: 4 sentinels (8/1, 8/29, 9/19) HJV: 1 sentinel (5/23)
Okaloosa	WNV: 1 live wild bird (flavivirus positive, 1 blue jay 5/31) EEEV: 10 live wild birds (7 blue jays 1/10, 4/11, 4/25, 5/16, 5/19, 6/6, 6/8; 1 cardinal 1/11 and 2 brown thrashers 2/21, 4/20)
Orange	WNV: 17 sentinels (1/3, 1/18, 1/24, 7/7, 7/14, 7/28, 8/1, 8/11, 8/18, 9/8, 9/15, 10/6) EEEV: 4 sentinels (6/2, 6/9, 6/27, 7/28) HJV: 3 sentinels (2/24, 7/7, 10/6)
Palm Beach	DENV : 2 humans (acquired in Palm Beach County, September)
Pasco	SLEV: 1 sentinel (9/26)
Pinellas	WNV: 6 sentinels (8/29, 9/12, 9/6, 10/10) SLEV: 28 sentinels (7/18, 8/8, 8/22, 8/29, 9/6, 9/12, 9/26, 10/3, 10/10, 10/17)
Putnam	WNV : 1 sentinel (10/14) EEEV: 1 horse (10/14)
Santa Rosa	EEEV: 7 live wild birds (1 house sparrow 1/05 and 6 blue jays 3/1, 2/1, 4/12, 5/10, 5/18)
Sarasota	WNV: 16 sentinels (1/4, 2/14, 3/14, 4/25, 5/2, 6/27, 7/5, 7/18, 8/22, 9/12, 9/19, 9/30, 10/11, 10/17); 1 horse (8/12)
Seminole	WNV: 4 sentinels (6/7, 9/19)
St. Johns	WNV: 2 sentinels (9/12, 10/3) EEEV: 2 sentinels (6/13, 9/12)
St. Lucie	WNV: 1 sentinel (9/9)
Walton	WNV: 1 sentinel (5/24) EEEV: 13 sentinels (1/6, 7/18, 8/1, 8/8, 8/22, 9/19, 9/26, 10/10) ; 2 live wild birds (2 cardinals 1/14, 1/21) HJV: 3 sentinels (1/14, 4/18, 5/2)

Acknowledgements and Data Sources

Contributors: Leena Anil, Ph.D., Danielle Stanek, DVM, and Carina Blackmore, DVM, Ph.D., DOH Bureau of Environmental Public Health Medicine; Lillian Stark, Ph.D. and Valerie Mock, DOH Bureau of Laboratories.

For more surveillance information, please see the DOH website at:

<http://www.doh.state.fl.us/Environment/medicine/arboviral/index.html>

Data is provided by county health departments, Department of Health Laboratories, Department of Agriculture and Consumer Services, mosquito control agencies, Florida Fish and Wildlife Conservation Commission, medical providers and veterinarians. Equine cases are determined by the Department of Agriculture and Consumer Services. Wild captured bird information is provided by the John A. Mulrennan Public Health Entomology Research and Education Center.