

Flagler County

Community Health Improvement Plan

January 2020-

December 2023



Table of Contents

Summary of the Community Health Needs Assessment	2
Community Health Improvement Plan Development	5
Priority Health Issues	6
Adult Behavioral Health	7
Youth Behavioral Health	8
Cardiovascular Diseases and Diabetes	9
Mothers & Children Under Age 5	10
Family Violence	11
2020-2023 Action Plans	12
A. Priority Health Issue: Adult Behavioral Health	12
B. Priority Health Issue: Youth Behavioral Health	16
C. Priority Health Issue: Cardiovascular Diseases and Diabetes	17
D. Priority Health Issue: Mothers & Children Under Age 5	20
E. Priority Health Issue: Family Violence	22
Appendix A: Strategic Alignment	24

Summary of the Community Health Needs Assessment (CHNA)

Purpose

In 2019, a Community Health Needs Assessment process was facilitated to provide a general snapshot of the current health of the Flagler community. Many factors shape the health of a community, including the places where people live, learn, work and play. It is important to identify and measure all these factors to improve community health outcomes and understand the inequities preventing some people from living long, happy lives. Access to social, educational and economic opportunities, known as the social determinants of health, have as much impact on wellness as healthy eating, physical activity and access to medical services. To improve the health and quality of life of a community, it is necessary to address not only the multiple social determinants of health, but also to move from a focus on sickness and disease to one based on prevention and wellness. Sustained and broad community involvement is necessary to address the strategic health issues of a community—no single organization, no matter how well resourced or powerful, can tackle these issues alone.

2019 CHNA Partners

The 2019 CHNA process in Flagler County was resourced by four community organizations committed to the health of Flagler residents. Each partner provided financial support and leadership resources throughout the community health needs assessment process and have committed to leading strategies within their systems, and collaboratively with other organizations, to address the identified Priority Health Issues for 2020-2023.



Assessment Components

The Flagler CHNA process included three major components that informed the process to identify county-level priority health issues for 2020-2023. The CHNA process began with dialogue among the project partners in November of 2018 and culminated with the creation of the 2019 Community Needs Assessment, serving as the foundation of this Community Health Improvement Plan.



A County Health Survey reaching 3,692 respondents in Volusia & Flagler counties



Analysis of population-health data organized into 10 health issues



A Leadership Team of representatives from 19 Flagler County organizations

Flagler County CHNA Leadership Team

Leaders from 19 Flagler County organizations served on the Leadership Team, including:

Advent Health Palm Coast Hospital

Azalea Health

Business & Community Leaders

City of Bunnell

City of Flagler Beach

City of Palm Coast

Commission on Housing and Homelessness of
Volusia & Flagler Counties

County of Flagler

Department of Children and Families

Early Learning Coalition of Flagler & Volusia

Family Life Center

Flagler Cares

Flagler Free Clinic

Flagler Schools

Florida Department of Health-Flagler

Halifax Health

SMA Healthcare

United Way of Volusia/Flagler Counties

Selecting Priority Health Issues

The Flagler County CHNA Leadership Team utilized an action-oriented decision framework to review information and data collected and to guide their dialogue leading to the identification of Priority Health Issues for action during the 2020-2023 implementation cycle. The framework included considerations for data review and analysis, potential implementation strategies for short and long-term action. Primary (County Health Survey results) and secondary (over 300 health indicators) data were distributed to the Leadership Team for their review and analysis prior to meetings on May 2 and June 21, 2019.

Community Health Improvement Plan Development

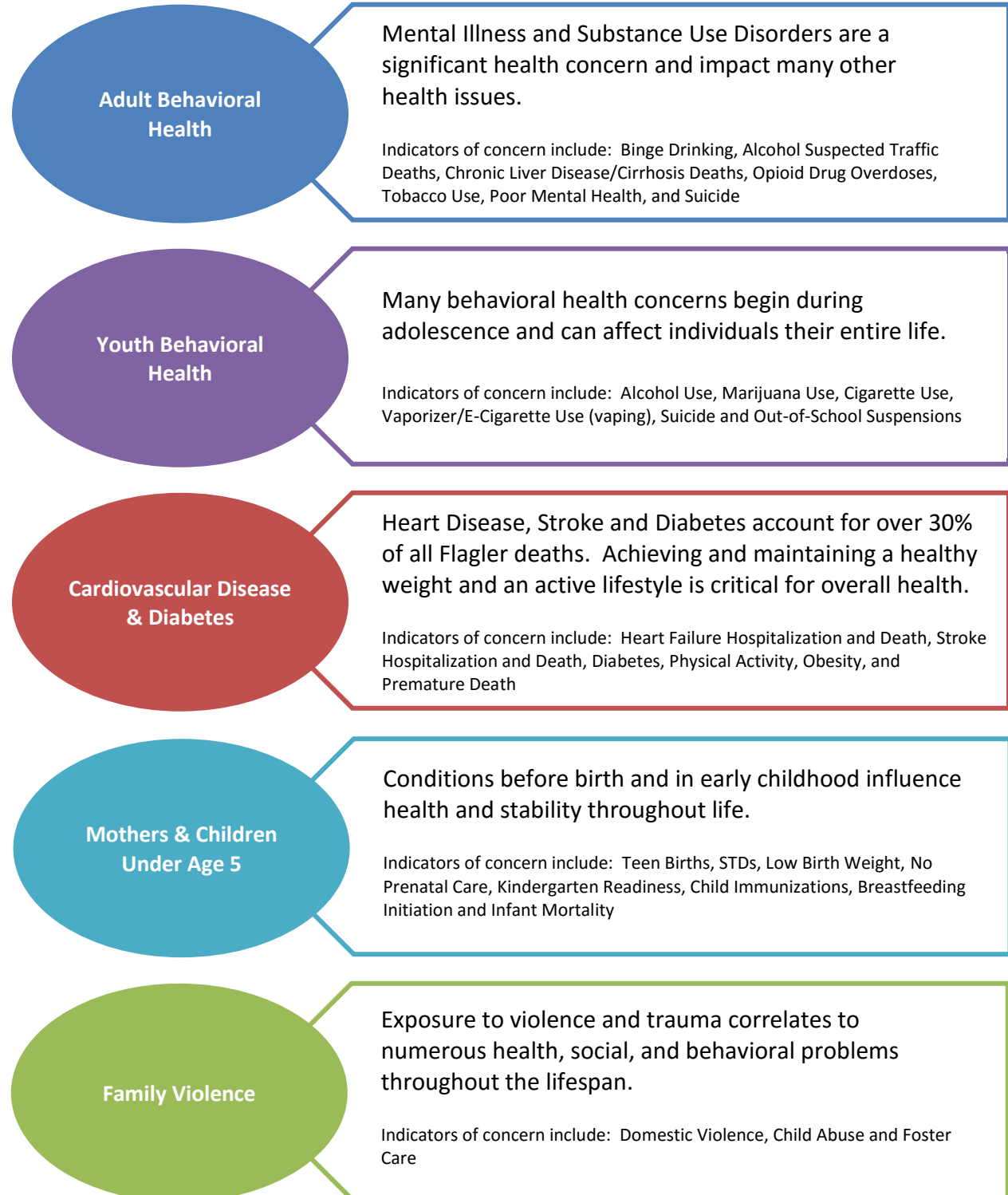
The Flagler Community Health Needs Assessment Leadership Team began dialogue about potential community health improvement strategies in June of 2019. Those initial concepts were researched and explored with potential strategy champions and further refined. An online survey was also conducted in November 2019 to solicit input on the Community Health Improvement Plan.

The Leadership Team met again in December 2019 to review the suggested strategies compiled to date. Leadership Team members also discussed the desire to create Community Health Improvement Plan that was a living document that would be regularly analyzed and adjusted as new opportunities or barriers were identified.

This Community Health Improvement Plan represents the ongoing work of strategy champions and partnering agencies to create an action-oriented plan to impact community health in Flagler County.

2020-2023 Priority Health Issues

The 2019 Community Health Needs Assessment activities in Flagler County culminated with the identification of five health priorities for future health improvement activities.



Adult Behavioral Health

Behavioral health is a term that covers the full range of mental and emotional well-being – from coping with daily life challenges to the often-complex treatment of mental illnesses, such as major depression or bipolar disorder, as well as substance use disorders and other addictive behaviors. Now more than ever, health experts across all fields are recognizing the important link between good behavioral health and good overall health.



ABH Goal 1: Expand the capacity of behavioral health services available to Flagler residents and reduce barriers to access.

Strategy	
ABH a. Assisted Outpatient Treatment	Establish Assisted Outpatient Treatment program, a court supervised mental health treatment program.
ABH1b. Mental Health First Aid	Expand the reach of SMA Healthcare’s Mental Health First Aid training in the community.
ABH1c. Zero Suicide	Expand the SMA Healthcare Zero Suicide project, a SAMHSA grant to provide care coordination and Question, Persuade, Refer (QPR) training.
ABH1d. Medication Assisted Treatment	Expand Medication Assisted Treatment (MAT) capacity in Flagler County.
ABH1e. ER Intervention Project	Establish ER intervention programs in area Emergency Departments that use Certified Peer Counselors and telehealth to engage individuals experiencing opioid overdose in treatment services
ABH1f. Community Awareness of Behavioral Health Resources	Increase the awareness of existing behavioral health resources in the community to increase access to services
ABH1g. Organize Collaborative Behavioral Health Efforts	Streamline the structure of existing collaborative efforts to coordinate behavioral health efforts to maximize staff resources and facilitate action
ABH1h. Communication and Referral Management System	Establish a new communication and referral management system in Flagler County that utilizes a software platform to facilitate connections between education, health and behavioral health organizations to increase access to services and facilitate care coordination.
ABH1i. SOAR Collaborative	Increase access to SSI/SSDI benefits through a coordinated network of SOAR processors.
ABH1j. Smoking Cessation	Increase the number of individuals who have access to Tobacco Cessation supports

Youth Behavioral Health

Mental Health

According to the U.S. Department of Health and Human Services Office of Adolescent Health, important mental health habits—including coping, resilience and good judgment—help adolescents to achieve overall wellbeing and set the stage for positive mental health in adulthood. It is estimated that approximately one in five adolescents has a diagnosable mental disorder, such as depression and/or anxiety disorders and that less than half of adolescents with psychiatric disorders are thought to have received any kind of treatment in the last year.



Substance Use

Substance use among youth can affect growth and development, especially brain development, and can contribute to the development of adult health problems, such as heart disease, high blood pressure, and sleep disorders.

YBH Goal 1: Expand the capacity of behavioral health services available to Flagler youth and reduce barriers to access.

Strategy	
YBH 1a. Crisis Response Team	Expand the reach of the SMA Healthcare’s Crisis Response Team, an on-demand crisis intervention system for youth and young adults.
YBH 1b. Youth Psychiatric Services	Increase youth access to psychiatric services in Flagler County through the establishment of a new program in school and in the community.

Chronic Disease: Cardiovascular Diseases and Diabetes

(including the shared modifiable risk factors of healthy eating & physical activity)

Chronic diseases and conditions—such as heart disease, stroke, cancer, and diabetes—are among the most common, costly, and preventable of all health problems. These conditions shorten lives, reduce quality of life, and create considerable burden for caregivers.

According to the Centers for Disease Control and Prevention (CDC):

- Six in 10 adults in the U.S. have a chronic disease and four in 10 have two or more.
- Heart Disease, Stroke and Diabetes are three of the eight leading causes of death in Flagler County and account for over 30% of all deaths.



Health risk behaviors contribute significantly to this high prevalence of chronic diseases. Four of these health risk behaviors—lack of exercise or physical activity, poor nutrition, tobacco use, and drinking too much alcohol—cause much of the illness and early death related to chronic diseases and conditions.

CDD Goal 1: Increase the understanding of Diabetes and related risk factors and promote healthy lifestyles.

Strategy	
CDD1a. Diabetes Awareness, Education and Outreach	Provide diabetes education in partnership with Advent Health Palm Coast Foundation and DiaBEATes Alliance to raise awareness to prevent and manage Type 1 and Type 2 diabetes in Palm Coast community.
CDD1b. Youth Healthy Eating and Physical Activity	Increase physical activity and healthy eating among vulnerable youth.
CDD1c. CREATION Life	Provide CREATION Life educational sessions for Flagler residents.

CDD Goal 2: Increase access to effective chronic disease management programs.

Strategy	
CDD2a. Diabetes Self-Management Education Program (DSME)	Establish an accredited Diabetes Self-Management Education Program (DSME) with Medical Nutritional Therapy (MNT) and CDC approved Diabetes Prevention Program (DPP) to improve the health of Americans through Prevention and Management of Diabetes Education.
CDD2b. Free Clinic Support	Provide financial support to the Flagler County Free Clinic to support access to care for the uninsured.

Mothers and Children Under Age 5

Improving the well-being of mothers, infants, and children is an important public health goal for the United States. Their well-being determines the health of the next generation and can help predict future public health challenges for families, communities, and the health care system as cited by Healthy People 2020. There is now extensive evidence that conditions before birth and in early childhood influence health in adult life. For example, low birth weight is now known to be associated with increased rates of high blood pressure, heart disease, stroke and diabetes



MC5 Goal 1: Increase access to quality health and education services to young children.

Strategy	
MC51a. Childhood Immunizations	Increase the percent of children who are fully immunized including children entering kindergarten.
MC51b. Grade Level Reading	Implement strategies to increase the quality of early learning environments to improve pre-reading skills and language interactions in early childhood.

MC5 Goal 2: Increase access to prenatal supports and education.

Strategy	
MC52a. Prenatal Supports	Provide free prenatal and OB education to low income women.

Family Violence

Violence negatively impacts communities by reducing productivity, decreasing property values, and disrupting social services. The lasting trauma of witnessing or being a victim of violence can have life-long emotional, physical and social consequences.



FV Goal 1: Provide supports to youth exposed to violence and trauma in their homes and neighborhoods.

Strategy	
FV1a. Handle with Care	Expand the effort to support youth exposed to trauma in their childcare and school environments.

FV Goal 2: Increase the understanding of domestic violence and improve the supports provided to victims.

Strategy	
FV2a. Housing Policy Change	Work with the Flagler County Affordable Housing Advisory Committee to include victims of domestic violence, dating violence and stalking as a protected class against housing discrimination.
FV2b. Clergy Training	Coordinate the delivery of training to Flagler County clergy to increase their competencies regarding the identification, reporting and supporting of victims of domestic violence, dating violence, & stalking within the church setting.
FV2c. Law Enforcement Training	Coordinate the delivery of domestic violence education to Flagler County Sheriff’s Office patrol deputies and new hires.
FV2d. Hospital Staff Training	Partner with the Family Life Center to provide domestic violence and sexual assault awareness training to Advent Health staff.

2020-2023 Action Plans

A. Adult Behavioral Health

ABH Goal 1: Expand the capacity of behavioral health services available to Flagler residents and reduce barriers to access.

ABH a. Assisted Outpatient Treatment. Establish Assisted Outpatient Treatment program, a court supervised mental health treatment program.

Strategy Champion and/or Collaborative. SMA Healthcare

Obj. #	Objective	Partners	Baseline	Target Value	Target Date
ABH 1a1.	Seek funding to develop new AOT program capacity in Flagler County	7 th Judicial Circuit Court Administration	0	Grant funding identified and proposal submitted	12/31/22

ABH1b. Mental Health First Aid. Expand the reach of SMA Healthcare’s Mental Health First Aid training in the community.

Strategy Champion and/or Collaborative

Obj. #	Objective	Partners	Baseline	Target Value	Target Date
ABH 1b1.	Increase the number of individuals who have completed MHFA	Community organizations sponsoring training	486	1782	12/31/22

ABH1c. Zero Suicide. Expand the SMA Healthcare Zero Suicide project, a SAMHSA grant to provide care coordination and Question, Persuade, Refer (QPR) training.

Strategy Champion and/or Collaborative

Obj. #	Objective	Partners	Baseline	Target Value	Target Date
--------	-----------	----------	----------	--------------	-------------

ABH 1c1.	Increase the number of Zero Suicide Care Coordination participants	Flagler County Corrections, Advent Health, Halifax Health, Veteran's Administration	367	1500	12/31/22
ABH 1c2.	Increase the number of community members trained in QPR (Question, Persuade, Refer)	Community organizations sponsoring training	263	1000	12/31/22

ABH1d. Medication Assisted Treatment. Expand Medication Assisted Treatment (MAT) capacity in Flagler County.

Strategy Champion and/or Collaborative

Obj. #	Objective	Partners	Baseline	Target Value	Target Date
ABH 1d1.	Seek funding to establish additional MAT treatment capacity in Flagler County.		1 (Halifax Health)	(5) All Vol/Flag Hospital ER's	12/31/22

ABH1e. ER Intervention Project. Establish ER intervention programs in area Emergency Departments that use Certified Peer Counselors and telehealth to engage individuals experiencing opioid overdose in treatment services

Strategy Champion and/or Collaborative

Obj. #	Objective	Partners	Baseline	Target Value	Target Date
ABH 1e1.	Seek funding to establish Peer Counselors and telehealth in Flagler County Emergency Departments	Advent Health, Halifax Health, SMA Healthcare	245 annually	315 Year 1 325 Year2 370 Year 3	12/31/22

ABH1f. Community Awareness of Behavioral Health Resources. Increase the awareness of existing behavioral health resources in the community to increase access to services

Strategy Champion and/or Collaborative. Flagler Cares, Volusia/Flagler Behavioral Health Consortium

Obj. #	Objective	Partners	Baseline	Target Value	Target Date
ABH 1f1.	Develop a community education campaign to increase awareness of and access to behavioral health services.	Flagler BH providers, city and county government	N/A	Reach 5,000 residents	12/31/21

ABH1g. Organize Collaborative Behavioral Health Efforts. Streamline the structure of existing collaborative efforts to coordinate behavioral health efforts to maximize staff resources and facilitate action

Strategy Champion and/or Collaborative. Volusia/Flagler Behavioral Health Consortium, Flagler Cares

Obj. #	Objective	Partners	Baseline	Target Value	Target Date
ABH 1g1.	Reorganize, formalize and promote the Volusia Behavioral Health Consortium to increase active participation	Behavioral Health stakeholders	30 participants per meeting	40 participants per meeting	12/31/21
ABH 1g2.	Implement one special project on the consortium's action plan	BHC members	N/A	1 project successfully completed	12/31/21

ABH1h. Communication and Referral Management System. Establish a new communication and referral management system in Flagler County that utilizes a software platform to facilitate connections between education, health and behavioral health organizations to increase access to services and facilitate care coordination.

Strategy Champion and/or Collaborative. Flagler Cares

Obj. #	Objective	Partners	Baseline	Target Value	Target Date
ABH 1h1.	Create a network of public and private behavioral health care providers participating in a referral and communication management system by the end of year two.	Hospitals, behavioral health care providers, Flagler Schools	N/A	10 providers	12/31/2021
ABH 1h2.	Utilize technology to facilitate patient referrals to mental health and substance abuse services throughout year three.	Network providers	N/A	Minimum of 100 referrals	12/31/2022

ABH1i. SOAR Collaborative. Increase access to SSI/SSDI benefits through a coordinated network of SOAR processors.					
Strategy Champion and/or Collaborative. Flagler Cares					
Obj. #	Objective	Partners	Baseline	Target Value	Target Date
ABH I.i.1	Enhance support available to vulnerable residents to apply for and obtain SSI/SSDI benefits (to include income and health coverage) through the establishment of a coordinated network of advocates.	Advent Health, Flagler Cares, SOAR providers	0	1 coordinated network of advocates created.	12/31/21

ABH1j. Smoking Cessation. Increase the number of individuals who have access to Tobacco Cessation supports					
Strategy Champion and/or Collaborative. Advent Health Palm Coast, NEFL AHEC					
Obj. #	Objective	Partners	Baseline	Target Value	Target Date
ABH 1j1.	Advent Health partners with AHEC to increase free tobacco cessation classes provided to underserved communities.	AHEC (Area Health Education Center)	82	90	12/31/21

B. Youth Behavioral Health

YBH Goal 1: Expand the capacity of behavioral health services available to Flagler youth and reduce barriers to access.

YBH 1a. Crisis Response Team. Expand the reach of the SMA Healthcare’s Crisis Response Team, an on-demand crisis intervention system for youth and young adults.

Strategy Champion and/or Collaborative. SMA Healthcare

Obj. #	Objective	Partners	Baseline	Target Value	Target Date
YBH 1b1.	Expand the utilization of the Crisis Response Team by 20% by December 31, 2022	SMA Healthcare, Law Enforcement, Flagler Schools	33	41	12/31/22

YBH 1b. Youth Psychiatric Services. Increase youth access to psychiatric services in Flagler County through the establishment of a new program in school and in the community.

Strategy Champion and/or Collaborative. Advent Health Palm Coast, Flagler Schools

Obj. #	Objective	Partners	Baseline	Target Value	Target Date
YBH 1b1.	Work with Flagler schools and community stakeholders to identify which psychiatric gap will be the priority to address by the end of year one.	Advent Health Palm Coast, Flagler Schools, mental health providers	N/A	Plan developed	12/31/21
YBH 1b2.	Provide new school-based psychiatric outpatient services to at least 50 students per year by year two.	Advent Health Palm Coast, Flagler Schools, mental health providers	0	50 students	12/31/22

C. Cardiovascular Diseases and Diabetes

CDD Goal 1: Increase the understanding of Diabetes and related risk factors and promote healthy lifestyles.

CDD1a. Diabetes Awareness, Education and Outreach. Provide diabetes education in partnership with Advent Health Palm Coast Foundation and DiaBEATes Alliance to raise awareness to prevent and manage Type 1 and Type 2 diabetes in Palm Coast community.

Strategy Champion and/or Collaborative. Advent Health Palm Coast, Advent Health Palm Coast Foundation

Obj. #	Objective	Partners	Baseline	Target Value	Target Date
CDD 1a1.	Provide diabetes education to increase awareness to prevent and manage Type 1 and Type 2 diabetes touching 1,000 Palm Coast residents during year one and with a focus on Diabetes Awareness Month November 2020.		N/A	1,000 residents	12/31/21
CDD 1a2.	Engage 100 at risk residents in Diabetes blood sugar and retinopathy screenings in partnership with Flagler County Health Department and Advent Health Palm Coast Foundation by end of year one.		N/A	100 residents	12/31/21

CDD1b. Youth Healthy Eating and Physical Activity. Increase physical activity and healthy eating among vulnerable youth.

Strategy Champion and/or Collaborative. Advent Health Palm Coast

Obj. #	Objective	Partners	Baseline	Target Value	Target Date
CDD 1b1.	Provide financial support to provide daily fresh fruit and whole grain snacks to youth at seven Boys & Girls Clubs.	Boys & Girls Clubs	N/A	# of youth at 7 B&G Clubs	12/31/20 12/31/21 12/31/22

CDD 1b2.	Provide mentorship and education about healthy eating and physical activity to 75% of youth participants at seven boys & Girls Clubs.	Boys & Girls Clubs	N/A	75% of youth participants at 7 B&G Clubs	12/31/20 12/31/21 12/31/22
----------	---	--------------------	-----	--	----------------------------------

CDD1c. CREATION Life. Provide CREATION Life educational sessions for Flagler residents.

Strategy Champion and/or Collaborative

Obj. #	Objective	Partners	Baseline	Target Value	Target Date
CDD 1c1.	Provide 2 sessions, each with 50 participants who will demonstrate knowledge of material.	Community organization hosts	N/A	200	12/31/21 12/31/22
CDD 1c2	75% of CREATION Life session attendees who complete the program will demonstrate an improvement in knowledge and/or attitude after completing the eight sessions	Community organization hosts	N/A	150	12/31/21 12/31/22

CDD Goal 2: Increase access to effective chronic disease management programs.

CDD2a. Diabetes Self-Management Education Program (DSME). Establish an accredited Diabetes Self-Management Education Program (DSME) with Medical Nutritional Therapy (MNT) and CDC approved Diabetes Prevention Program (DPP) to improve the health of Americans through Prevention and Management of Diabetes Education.

Strategy Champion and/or Collaborative: Department of Health-Flagler County

Obj. #	Objective	Partners	Baseline	Target Value	Target Date
--------	-----------	----------	----------	--------------	-------------

CDD 2a1.	By June 30, 2021, DOH-Flagler will receive full recognition for their Diabetes Prevention Program by the Centers for Disease Control and Prevention.	Diabetes Alliance, Advent Health Palm Coast Foundation	N/A	Full recognition by CDC	June 30, 2020
CDD 2a2.	By June 30, 2021, DOH-Flagler will receive full accreditation for their Diabetes Self-Management and Education program by the American Association of Diabetes Educators	Diabetes Alliance, Advent Health Palm Coast Foundation	N/A	Full accreditation by the AADE	June 30, 2021

CDD2b. Free Clinic Support. Provide financial support to the Flagler County Free Clinic to support access to care for the uninsured.

Strategy Champion and/or Collaborative: Advent Health Palm Coast

Obj. #	Objective	Partners	Baseline	Target Value	Target Date
BAHS 1a1.	Provide no-cost vouchers for labs and diagnostics for patients at the Flagler County Free Clinic	Flagler County Free Clinic	N/A	250 vouchers	12/31/20 12/31/21 12/31/22

D. Mothers and Children Under Age 5

MC5 Goal 1: Increase access to quality health and education services to young children.

MC51a. Childhood Immunizations. Increase the percent of children who are fully immunized including children entering kindergarten.

Strategy Champion and/or Collaborative: Department of Health-Flagler County

Obj. #	Objective	Partners	Baseline	Target Value	Target Date
MC5 1a1.	By December 31, 2021, DOH-Flagler will implement an after-hours Immunization Clinic for school aged children at the Health Department.	Flagler County School system	N/A	Evidence of the clinic	December 31, 2021
MC5 1a2.	By December 31, 2021, DOH-Flagler will obtain approval by the School Board to provide HPV vaccines for middle and high schoolers upon parental consent.	Flagler County School Board	N/A	Evidence of HPV administration upon parental consent	December 31, 2021

MC51b. Grade Level Reading. Implement strategies to increase the quality of early learning environments to improve pre-reading skills and language interactions in early childhood.

Strategy Champion and/or Collaborative: Early Learning Coalition of Flagler & Volusia

Obj. #	Objective	Partners	Baseline	Target Value	Target Date
MC5 1b1.	Early Learning Programs will receive feedback and participate in professional development opportunities (PD) to increase the quality of teacher child language interactions	ELCFV, Early Learning Programs	0	100	6/30/2022
MC5 1b2.	The quality of Teacher/Child Language Interactions will be assessed as mid to high in 75% of early learning programs that participate in PD and receive post assessment.	ELCFV, Early Learning Programs	N/A	75%	6/30/2022

MC5 Goal 2: Increase access to prenatal supports and education.

MC52a. Prenatal Supports. Provide free prenatal and OB education to low income women.

Strategy Champion and/or Collaborative. Advent Health Palm Coast

Obj. #	Objective	Partners	Baseline	Target Value	Target Date
MC5 2a1.	Expand Women’s Health Services in Flagler County through the addition of a part time OB-GYN and ARNP and provide colposcopy testing services.	Department of Health-Flagler County, Dr. Raji and Mary Murphy, ARNP.	N/A	Evidence of services	12/31/21
MC5 2a2.	Expand Women’s Health services in Flagler County through a new partnership and back up by Flagler Hospital’s OB-GYN Associates (Drs. Topi, Pulfus, et al....)	DOH-Flagler, Flagler Associates OB-GYN group	N/A	Evidence of partnership	12/31/21

E. Family Violence

FV Goal 1: Provide supports to youth exposed to violence and trauma in their homes and neighborhoods.

FV1a. Handle with Care. Expand the effort to support youth exposed to trauma in their childcare and school environments.

Strategy Champion and/or Collaborative. Flagler Schools, Flagler County Sheriff's Office

Obj. #	Objective	Partners	Baseline	Target Value	Target Date
FV 1a1.	Expand the reach of Handle with Care.	Law Enforcement	N/A	TBD	12-31-21
FV 1a2.	Explore a partnership/MOU with Family Life Center to provide trauma supports to students exposed to trauma.	Family Life Center	N/A	# of students reached	12-31-21

FV Goal 2: Increase the understanding of domestic violence and improve the supports provided to victims.

FV2a. Housing Policy Change. Work with the Flagler County Affordable Housing Advisory Committee to include victims of domestic violence, dating violence and stalking as a protected class against housing discrimination.

Strategy Champion and/or Collaborative. Family Life Center

Obj. #	Objective	Partners	Baseline	Target Value	Target Date
FV 2a1.	Develop recommend policy language change.	Affordable Housing Advisory Committee, Flagler County	N/A	Policy language developed	6-30-21
FV 2a2.	Recommend final proposed language change to Board of County Commissioners.	Affordable Housing Advisory Committee, Flagler County	N/A	Policy adopted	12-31-21

FV2b. Clergy Training. Coordinate the delivery of training to Flagler County clergy to increase their competencies regarding the identification, reporting and supporting of victims of domestic violence, dating violence, & stalking within the church setting.					
Strategy Champion and/or Collaborative. Family Life Center					
Obj. #	Objective	Partners	Baseline	Target Value	Target Date
FV 2b1.	Provide in person or virtual training to local clergy utilizing the Faith Trust Institute Pastoral Care for Domestic Violence curriculum.	Local houses of faith	N/A	20 faith leaders per year	12/31/20 12/31/21 12/31/22

FV2c. Law Enforcement Training. Coordinate the delivery of domestic violence education to Flagler County Sheriff's Office patrol deputies and new hires.					
Strategy Champion and/or Collaborative. Family Life Center					
Obj. #	Objective	Partners	Baseline	Target Value	Target Date
FV 2c1.	Provide new Flagler County Sheriff's Office deputies with Domestic Violence Education training	Flagler County Sheriff's Office	N/A	80% of new hires annually	12/31/20 12/31/21 12/31/22

FV2d. Hospital Staff Training. Partner with the Family Life Center to provide domestic violence and sexual assault awareness training to Advent Health staff.					
Strategy Champion and/or Collaborative. Advent Health Palm Coast, Family Life Center					
Obj. #	Objective	Partners	Baseline	Target Value	Target Date
FV 2d1.	Provide 1-hour Domestic Violence and Sexual Assault virtual or in person education sessions for Advent Health Palm Coast staff		N/A	50 staff members annually	12/31/20 12/31/21 12/31/22

Appendix A: Alignment

Strategic Health Priority Area 1: Adult Behavioral Health

Alignment				
Flagler County CHIP Objectives	DOH-Flagler Strategic Plan	Florida SHIP	Agency Strategic Plan	Healthy People 2030
Objective 1.a.1 Seek funding to develop a new Assisted Outpatient Program in Flagler County.	--	BH1	--	MHMD-07
Objective 1.b.1 Increase the number of individuals who have completed Mental Health First Aid training in the community.	--	BH1.2	--	MHMD-07
Objective 1.c.1 Increase the number of Zero Suicide Care Coordination participants.	--	BH4.1	--	MHMD-07
Objective 1.c.2 Increase the number of community members trained in QPR (Question, Persuade, Refer)	--	BH4.1	--	MHMD-07
Objective 1.d.1 Seek funding to establish additional Medication Assisted Treatment capacity in Flagler County.	--	BH4.1	--	MHMD-07

Objective 1.e.1 Seek funding to establish Peer Counselors and telehealth for behavioral health services at Advent Health Palm Coast hospital's emergency room.	--	BH3	--	MHMD-07
Objective 1.f.1 Develop a community education campaign to increase awareness of and access to behavioral health services.	--	BH1	--	MHMD-07
Objective 1.g.1 Reorganize, formalize and promote the Flagler-Volusia Behavioral Health Consortium to increase active participation	--	BH1	--	MHMD-07
Objective 1.g.2 Implement one special project to the Behavioral Health Consortium's action plan.	--	BH1	--	MHMD-07
Objective 1.h.1 Create a network of public and private behavioral health care providers participating in a referral and communication management system by the end of year two.	--	BH1 BH3	--	MHMD-07
Objective 1.h.2 Utilize technology to facilitate patient referrals to mental health and substance abuse services throughout year three.	--	BH1 BH3	--	MHMD-07

<p>Objective 1.i. Enhance support available to vulnerable residents to apply for and obtain SSI/SSDI benefits (to include income and health coverage) through the establishment of a coordinated network of advocates.</p>	<p>--</p>	<p>HE1 HE2 HE3 CD2.1</p>	<p>Goal 1.1</p>	<p>SDOH-01</p>
<p>Objective 1.j.1 Increase free tobacco cessation classes to underserved communities through an Advent Health Palm Coast hospital and AHEC partnership.</p>	<p>--</p>	<p>CD1.3.2</p>	<p>3.1.4</p>	<p>TU-01</p>

Strategic Health Priority Area 2: Youth Behavioral Health

Alignment				
Flagler County CHIP Objective	DOH-Flagler Strategic Plan	Florida SHIP	Agency Strategic Plan	Healthy People 2020
Objective 1.a.1 Expand the utilization of the Crisis Response team by 20% by December 31, 2022.	--	BH1	--	AH-DO2
Objective 1.b.1 Identify psychiatric service gaps within the Flagler County school system and select one to address by the end of year one.	--	BH1	--	MHMD-07
Objective 1.b.2 Provide new school based psychiatric outpatient services to at least 50 students per year by year two.	--	BH1	--	MHMD-07

Strategic Health Priority Area 3: Cardiovascular and Diabetes

Alignment				
Flagler County CHIP Objective	DOH-Flagler Strategic Plan	Florida SHIP	Agency Strategic Plan	Healthy People 2020
Objective 1.a.1 Provide diabetes education to increase awareness of Type 1 and type 2 diabetes with special focus on promoting Diabetes Awareness month in November.	H.4	CD1.1.2.	2.1	D-06
Objective 1.a.2 Engage 100 at risk residents in Diabetes blood sugar and retinopathy screenings in partnership with DOH-Flagler and Advent Health Palm Coast hospital foundation by end of year one.	H.4.e.	CD1.1.2	2.1	D-07
Objective 1.b.1 Provide financial support for daily fresh fruit and whole grain snacks to you at seven Boys and Girls clubs.	H.4	HW1.1	2.1.1	HWS-01 HWS-02 HWS-03

<p>Objective 1.b.2 Provide mentorship and education about healthy eating and physical activity to 75% of youth participants at seven Boys and Girls clubs.</p>	<p>H.4</p>	<p>HW1.1 HW2</p>	<p>2.1.1</p>	<p>HWS-01 HWS-02 HWS-06 HWS-08 HWS-09</p>
<p>Objective 1.a.1 By June 30, 2021, DOH-Flagler will receive full recognition for the Diabetes Prevention Program by the Centers for Disease Control.</p>	<p>H.4.e</p>	<p>CD1.1.2</p>	<p>2.1</p>	<p>D-06</p>
<p>Objective 2.a.2 By June 30, 2021 DOH-Flagler will receive full accreditation for their Diabetes Self-Management Education program by the American Association of Diabetes Educators</p>	<p>H.4.e</p>	<p>CD1.1.2</p>	<p>2.1</p>	<p>D-06</p>

Strategic Health Priority Area 4: Maternal and Child Health

Alignment				
Flagler County CHIP Objective	DOH-Flagler Strategic Plan	Florida SHIP	Agency Strategic Plan	Healthy People 2030
Objective 1.a.1 By December 31, 2021, DOH-Flagler will implement an after-hours Immunization Clinic for school aged children.	H1	IM2.1	3.1.1	IID-08
Objective 1.a.2 By December 31, 2021, DOH-Flagler will obtain approval by the School Board to provide HPV vaccines for middle and high schoolers upon parental consent.	H.1.d	IM2.1	3.1.1	IID-08

Objective 1.b.1 Early Learning Programs will receive feedback and participate in professional development opportunities (PD) to increase the quality of teacher child language interactions.	--	HE3.1	--	EMC-D03
Objective 1.b.2 The quality of Teacher/Child Language Interactions will be assessed as mid to high in 75% of early learning programs that participate in PD and receive post assessment	--	HE3.1	--	EMC-D03
Objective 2.a.1 Expand Women’s Health Services in Flagler County through the addition of a part time OB-GYN and ARNP and provide colposcopy testing services.	H.5.g	MCH1	--	C-09
Objective 2.a.2 Expand Women’s Health services in Flagler County through a new partnership and back up by Flagler Hospital’s OB-GYN Associates (Drs. Topi, Pulfas, etc..)	H.5.e	MCH1	--	MCH-08

Strategic Health Priority Area 4: Family Violence

Alignment				
Flagler County CHIP Objective	DOH-Flagler Strategic Plan	Florida SHIP	Agency Strategic Plan	Healthy People 2030
Objective 1.a.1 Expand the reach of handle with care.	--	ISU1	2.1.4	AH-R11

Objective 1.a.2 Explore a partnership/MOU with Family Life Center to provide trauma supports to students exposed to trauma.	--	ISU1	2.1.4	AH-R11 IVP-16
Objective 2.a.1 Develop and recommend a policy change to include victims of domestic violence, dating violence and stalking as a protected class against housing discrimination.	--	HE1 HE2 HE3	Goal 1.1	SDOH-4
Objective 2.a.2 Recommend final proposed language change to Board of County Commissioners.	--	HE1 HE2 HE3	Goal 1.1	SDOH-4
Objective 2.b.1 Provide in person or virtual training to local clergy utilizing the Faith Trust Institute Pastoral Care for Domestic Violence curriculum	--	ISV1.5	2.1.4	IVP-D04 IVP-D05
Objective 2.c.1 Provide new Flagler County Sheriff's Office deputies with Domestic Violence Education training	--	ISV1.5	2.1.4	IVP-D04 IVP-D05
Objective 2.d.1 Provide a 1 hour Domestic Violence and Sexual Assault virtual or in person education sessions for Advent Health Palm Coast hospital staff	--	ISV1.5	2.1.4	IVP-D04 IVP-D05

