



## Florida Arbovirus Surveillance

### Week 49: November 30–December 6, 2025

Arbovirus surveillance in Florida includes endemic mosquito-borne viruses such as West Nile virus (WNV), Eastern equine encephalitis virus (EEEV), and St. Louis encephalitis virus (SLEV), as well as exotic viruses such as dengue virus (DENV), chikungunya virus (CHIKV), Zika virus (ZIKV), and California encephalitis group viruses (CEV). Malaria, a parasitic mosquito-borne disease is also included. During the period of November 30–December 6, 2025, the following arboviral activity was recorded in Florida.

**WNV activity:** No human cases of WNV infection were reported this week. No horses with WNV infection were reported this week. Five sentinel chickens tested positive for antibodies to WNV in Alachua, Pasco, and Walton counties. In 2025, positive samples from six symptomatic humans, seven asymptomatic blood donors, one horse, one duck, and 378 sentinel chickens have been reported from 29 counties.

**SLEV activity:** No human cases of SLEV infection were reported this week. No sentinel chicken tested positive for antibodies to SLEV this week. In 2025, positive samples from four sentinel chickens have been reported from three counties.

**EEEV activity:** No human cases of EEEV infection were reported this week. No horses with EEEV infection were reported this week. No sentinel chickens tested positive for antibodies to EEEV this week. In 2025, positive samples from nine horses, two emus, one emu flock, one goat, and 57 sentinel chickens have been reported from 22 counties.

**International Travel-Associated Dengue:** Seven cases of dengue were reported this week in persons that had international travel. In 2025, 402 travel-associated dengue cases have been reported.

**Dengue Cases Acquired in Florida:** No cases of locally acquired dengue were reported this week. In 2025, positive samples from 61 humans and four mosquito pools have been reported from four counties.

**International Travel-Associated Chikungunya Fever Cases:** Thirty-three cases of chikungunya fever were reported this week in persons that had international travel. In 2025, one hundred sixty cases of travel-associated chikungunya fever have been reported.

**Chikungunya Fever Cases Acquired in Florida:** No cases of locally acquired chikungunya fever were reported this week. In 2025, no cases of locally acquired chikungunya fever have been reported.

**International Travel-Associated Oropouche Fever cases:** No cases of Oropouche fever were reported this week. In 2025, one case of travel-associated Oropouche fever has been reported.

**International Travel-Associated Zika Fever Cases:** No cases of Zika fever were reported this week in persons that had international travel. In 2025, no travel-associated Zika fever cases have been reported.

**Zika Fever Cases Acquired in Florida:** No cases of locally acquired Zika fever were reported this week. In 2025, no cases of locally acquired Zika fever have been reported.

**Advisories/Alerts:** Alachua, Bay, Clay, Duval, Hernando, Hillsborough, Lafayette, Leon, Palm Beach, Pasco, and Pinellas counties are currently under a mosquito-borne illness advisory. Brevard, Escambia, and Miami-Dade counties are currently under a mosquito-borne illness alert.

There are currently multiple travel health notices from the Centers for Disease Control and Prevention related to mosquito-borne diseases.

Dengue			Oropouche	Yellow Fever	Chikungunya		Rift Valley Fever	Malaria
Africa and Middle East	Americas	Asia and the Pacific Islands	Americas	Americas	Americas	Asia	Africa	Africa
Comoros	Belize	Austral Islands	Brazil	Colombia	Cuba	Bangladesh	Mauritania	Ethiopia
Samoa	Colombia	Bangladesh	Cuba			China	Senegal	
Sudan	Cuba	Cook Islands, NZ	Panama			Sri Lanka		
	El Salvador	French Polynesia	Peru					
	Panama	Kiribati						
		Mali						
		Marquesas Islands						
		Nauru						
		Philippines						
		Tuvalu						
		Vietnam						

Level 1 Travel Health Notice, Level 2 Travel Health Alert: [wwwnc.cdc.gov/travel/notices](http://wwwnc.cdc.gov/travel/notices).

For a map of arboviral disease activity in the United States visit: <https://www.cdc.gov/fight-the-bite/at-risk/index.html>.

## 2025 Human Case Summary

**West Nile Virus Illness Acquired in Florida:** In 2025, six human cases of WNV illness acquired in Florida have been reported in Clay (July), Duval (August), and Escambia (August, October) counties. Seven asymptomatic blood donors have been reported in Bay (October), Escambia (June, July, August), Miami-Dade (July), and St. Johns (June) counties.

**2025 International Travel-Associated Oropouche Cases:** One case with onset in 2025 has been reported in an individual with travel history to an Oropouche-endemic area in the two weeks prior to onset. County reporting the case was Miami-Dade. Country of origin was Cuba.

**2025 International Travel-Associated Chikungunya Cases:** One hundred sixty cases with onset in 2025 have been reported in individuals with travel history to a chikungunya-endemic area in the two weeks prior to onset. Counties reporting cases were: Broward (18), Charlotte, Clay, Collier (4), Hendry, Hillsborough (15), Lake, Lee (8), Miami-Dade (95), Orange (3), Osceola (2), Palm Beach (3), Pasco (2), Pinellas (2), Polk, Sarasota, and Seminole (2). Four cases were reported in non-FI residents. Countries of origin were: Bangladesh (2), Bolivia, Brazil (2), Cuba (149), India (2), Indonesia, Philippines, and Sri Lanka (2).

**2025 International Travel-Associated Dengue Cases:** Four hundred two cases with onset in 2025 have been reported in individuals with travel to a dengue-endemic area in the two weeks prior to onset. Counties reporting cases were: Bay, Brevard (2), Broward (18), Charlotte, Clay, Collier (7), Duval (5), Escambia, Hendry (2), Hernando (2), Hillsborough (26), Indian River, Lake (4), Lee (16), Manatee (2), Marion, Miami-Dade (254), Monroe (5), Okeechobee (3), Orange (9), Osceola (4), Palm Beach (12), Pasco (2), Pinellas (8), Polk (5), Sarasota (2), Seminole, St. Johns, St. Lucie (4), and Volusia (2). Eleven cases were reported in non-Florida residents. In 2025, 339 cases of dengue reported in Florida have been serotyped by PCR. Please see the table below for a breakdown of cases by country of origin and serotype.

Country of Exposure	DENV-1	DENV-2	DENV-3	DENV-4	Unknown	DENV2/ DENV3	Total
Antigua and Barbuda			1				1
Argentina	2						2
Bahamas			1				1
Bonaire			1				1

Country of Exposure	DENV-1	DENV-2	DENV-3	DENV-4	Unknown	DENV2/ DENV3	Total
Brazil	1	4	1			3	9
Colombia	1	1	2			2	6
Cuba		23	20	213	1	37	294
Cuba/Mexico						1	1
Curacao			1				1
Dominica			1				1
Dominican Republic			1				1
Ecuador			3				3
El Salvador			2			2	4
French Polynesia	1					1	2
Guatemala			2				2
Guyana		7				1	8
India						1	1
Mexico		1	9				10
Nicaragua	1		13			5	19
Pakistan	1						1
Panama			1				1
Peru			1			1	2
Philippines						1	1
Puerto Rico		1	13	1		4	19
Puerto Rico/Dominican Republic		1				1	2
Sri Lanka						1	1
St. Barts			3				3
St. Barts/St. Martin			1				1
Surinam		1					1
US Virgin Islands		1				2	3
<b>Total</b>	<b>7</b>	<b>40</b>	<b>77</b>	<b>214</b>	<b>1</b>	<b>63</b>	<b>402</b>

**2025 Dengue Cases Acquired in Florida:** In 2025, 61 cases of locally acquired dengue have been reported in Brevard (35), Hillsborough, Miami-Dade (24), and Pasco counties with onset in February, May, June, July, August, September, October, and November. One case was reported in a non-Florida resident. Forty-seven cases have been serotyped by PCR. Please see the table below for a breakdown of cases by county and serotype.

County of Exposure	DENV-1	DENV-2	DENV-3	DENV-4	Unknown	Total
Brevard			24		11	35
Hillsborough				1		1
Miami-Dade		6	3	12	3	24
Pasco	1					1
<b>Total</b>	<b>1</b>	<b>6</b>	<b>27</b>	<b>13</b>	<b>14</b>	<b>61</b>

**2025 International Travel-Associated Malaria Cases:** Forty-seven cases with onset in 2025 have been reported in individuals with travel history to a malaria-endemic area. Counties reporting cases were: Alachua (2), Brevard, Broward (5), Collier, Duval, Hillsborough (5), Lake, Leon, Manatee, Marion (2), Miami-Dade (5), Nassau (2), Orange (4), Palm Beach (4), Pasco, Polk (3), Sarasota, Seminole, St. Lucie (4), and Volusia (2). Eleven cases were reported in non-Florida residents. Please see the table below for a breakdown of cases by country of origin and *Plasmodium* species.

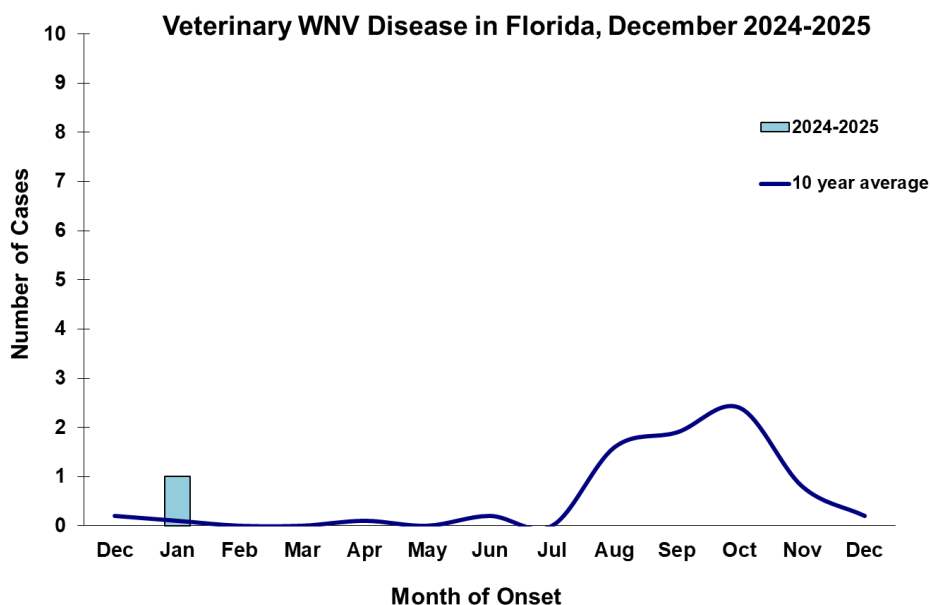
Country of Exposure	<i>Plasmodium falciparum</i>	<i>Plasmodium ovale</i>	<i>Plasmodium vivax</i>	Unknown	Total
Africa	4				4
Angola	1				1
Burkina Faso	1				1
Cameroon	1				1
Central America			1		1

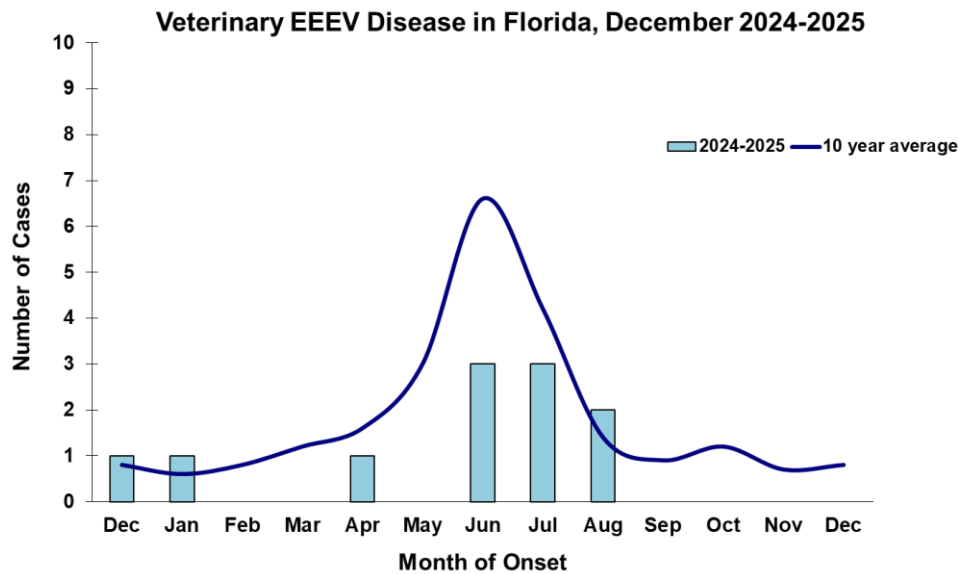
Country of Exposure	<i>Plasmodium falciparum</i>	<i>Plasmodium ovale</i>	<i>Plasmodium vivax</i>	Unknown	Total
Central Africa	1				1
Central/South America			2		2
Côte D'Ivoire	1				1
Gambia	1				1
Ghana	1				1
Guinea	1				1
Haiti	1				1
Honduras			1		1
India			1		1
Liberia	2				2
Malawi	1				1
Nicaragua			1		1
Nigeria	17	2		1	20
Peru			1		1
Rwanda	1				1
Sierra Leone	1				1
Uganda	1				1
Uganda/Kenya	1				1
<b>Total</b>	<b>37</b>	<b>2</b>	<b>7</b>	<b>1</b>	<b>47</b>

### Veterinary Cases\*\*

\*\*Veterinary cases are reported by date of onset. Only mammalian veterinary cases are included in the graphs.

No veterinary cases were reported this week.





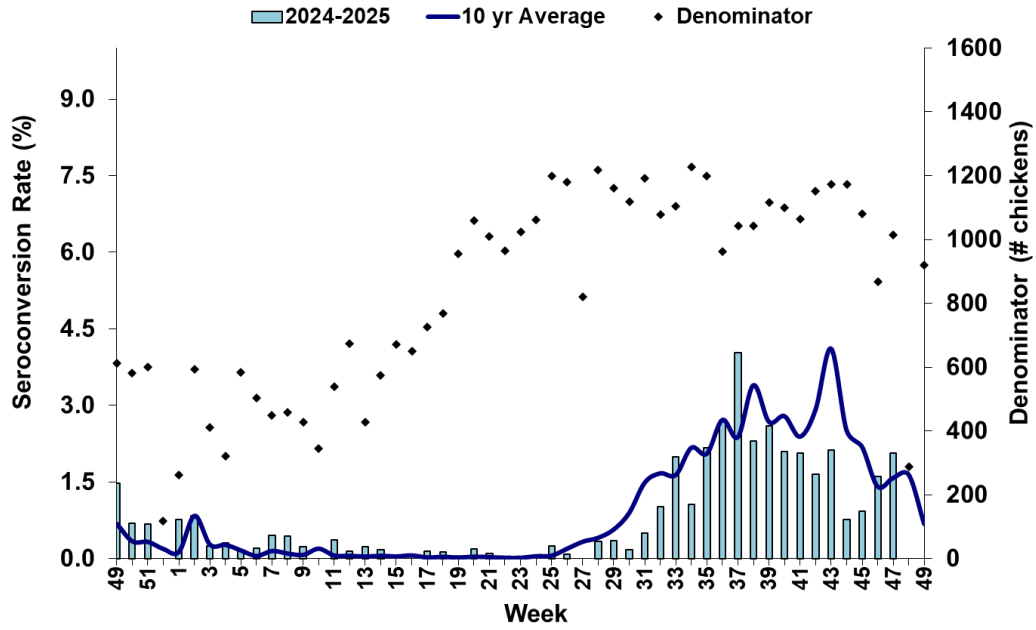
### Sentinel Chickens

The table below is for the reporting of confirmatory laboratory results from this week. Some of the samples were collected at earlier dates. The date of collection is recorded for samples collected on that day along with the total number of positives and the corresponding seroconversion rate for the week the sample was collected.

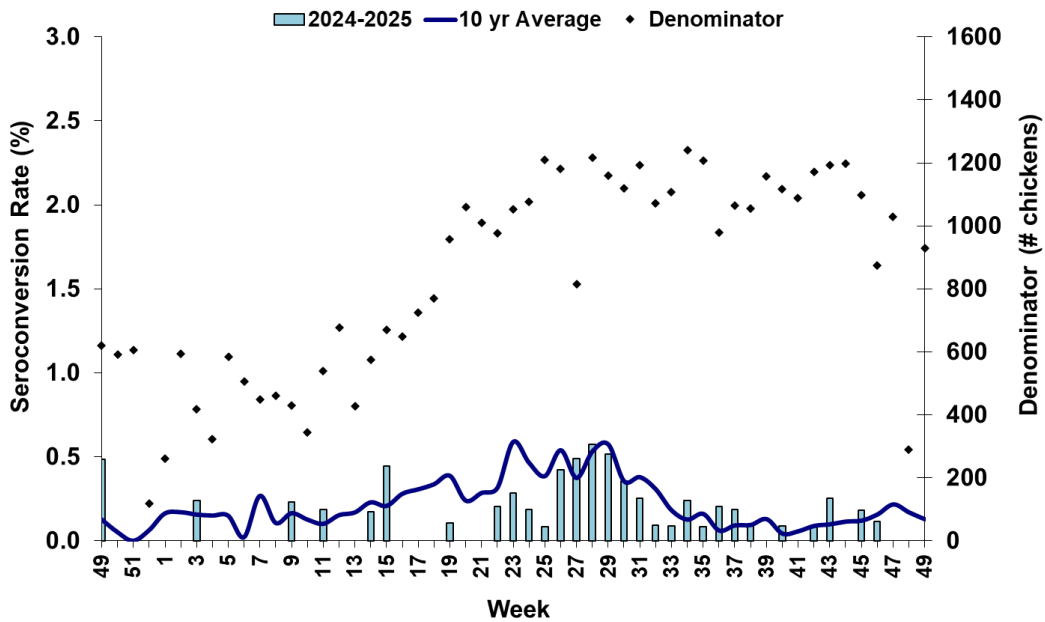
Five sentinel chickens tested positive for antibodies to WNV in Alachua, Pasco, and Walton counties

County	Collection Date	Seroconversion Rates (%)						County Totals	
		Flavi	SLEV	WNV	Alpha	EEEV	HJV	Collection Week	YTD
Alachua	11/18/2025	9.09		9.09				1 WNV	2 EEEV, 19 WNV
Pasco	11/21/2025	1.85		1.85				1 WNV	1 EEEV, 29 WNV
Walton	11/17/2025	3.23		3.23				3 WNV	11 EEEV, 4 HJ, 38 WNV

### Sentinel Seroconversions to WNV in Florida, 2024–2025



### Sentinel Seroconversions to EEEV in Florida, 2024–2025



### Mosquito Pools

No mosquito pools tested positive for EEEV or WNV this week.

County	Collection Date	Result	Species	County YTD

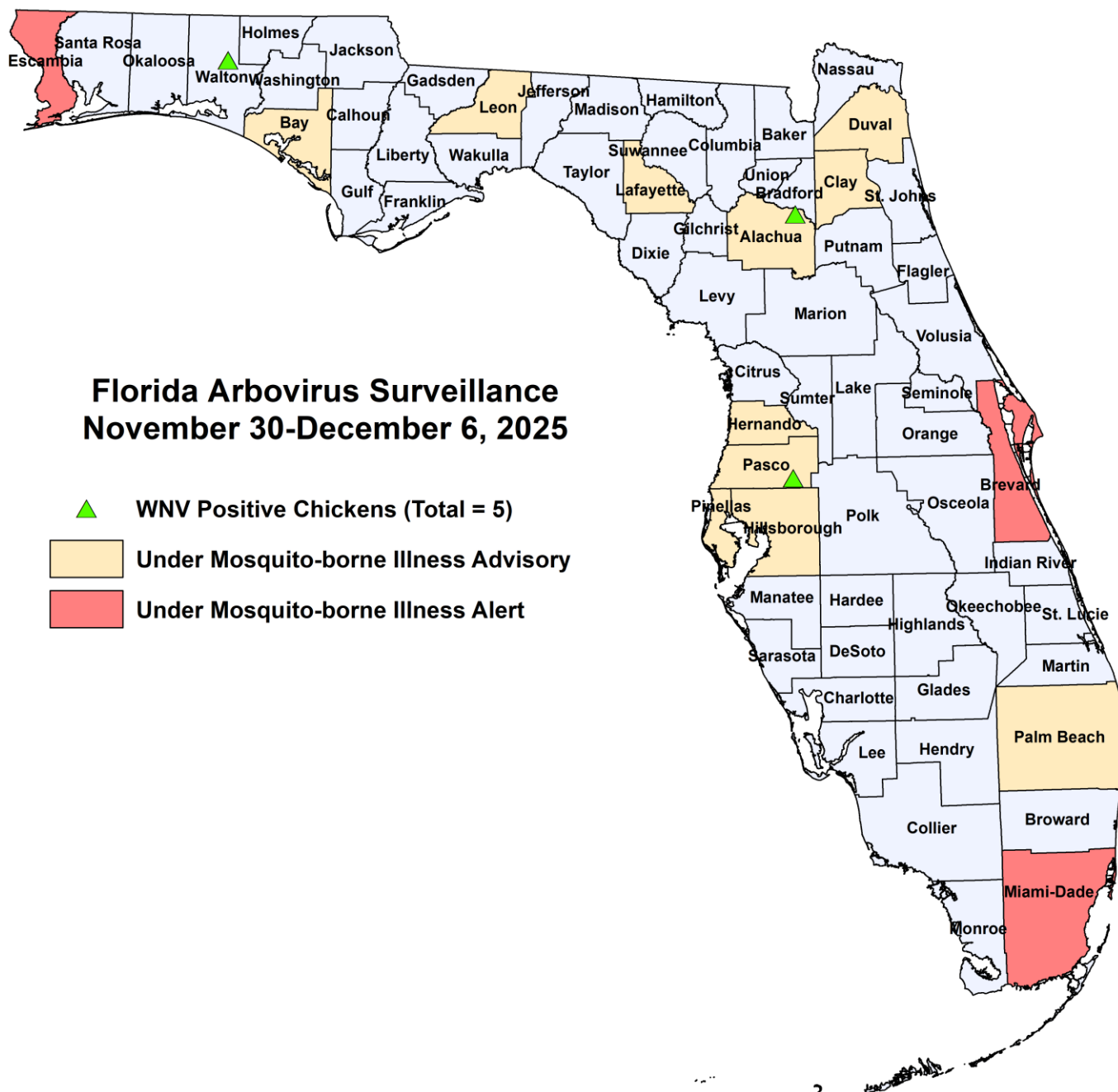
## Dead Birds

The Fish and Wildlife Conservation Commission (FWC) collects reports of dead birds, which can be an indication of arbovirus circulation in an area. This week, 19 reports representing a total of 35 dead birds, including three raptors and three doves were received from 13 counties.

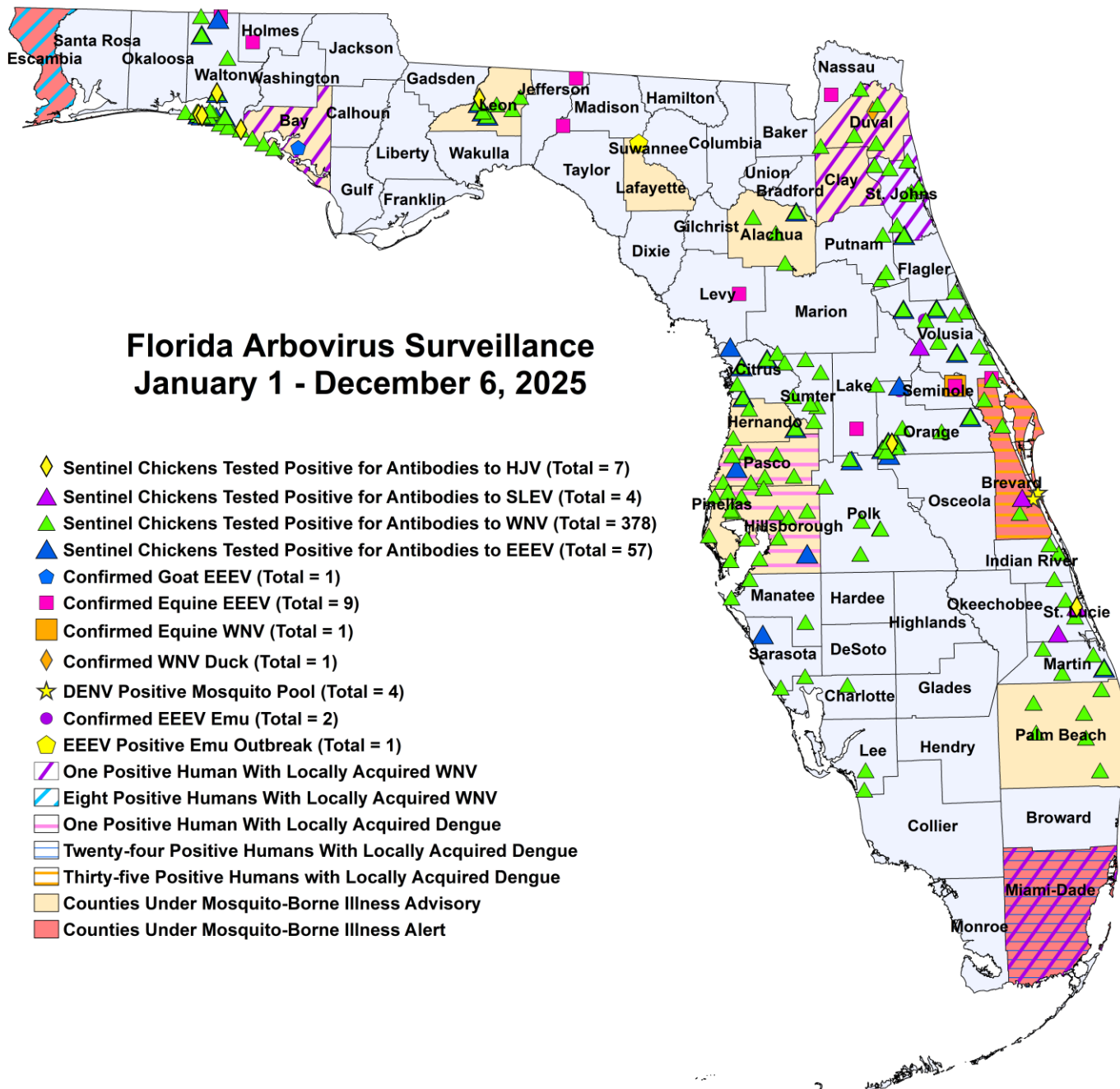
In 2025, 1349 reports representing a total of 3075 dead birds (103 crows, 48 jays, 280 raptors, 278 doves) were received from 58 of Florida's 67 counties.

### 2025

County	Total Dead Birds	Crows	Jays	Raptors	Doves
Brevard	3	0	0	0	0
Collier	4	0	0	0	0
Gadsden	1	0	0	0	0
Hernando	1	0	0	0	0
Hillsborough	2	0	0	0	0
Lee	13	0	0	1	3
Leon	1	0	0	0	0
Osceola	1	0	0	1	0
Palm Beach	4	0	0	0	0
Pinellas	1	0	0	0	0
Polk	1	0	0	0	0
Sarasota	2	0	0	0	0
St. Johns	1	0	0	1	0







### 2025 Mosquito-Borne Disease Activity by County

County	Humans	Equines	Sentinel Chickens	Other
Alachua			2 EEEV (7/24), (7/31) 19 WNV (7/24), (7/31), (8/5), (9/4), (9/8), (9/16), (9/23), (10/14), (10/23), (10/28), (11/18)	
Bay	1 asymptomatic WNV blood donor (October)		23 WNV (3/24), (8/4), (9/8), (9/15), (9/22), (10/6), (10/13), (10/20). (10/27), (11/10), (11/17)	1 EEEV goat (7/23)
Brevard	35 dengue (May, July (10), August (20), September (3), October)	1 EEEV (7/18)	1 SLEV (7/9) 8 WNV (2/7), (7/18), (9/12), (10/1), (10/17), (10/24), (10/31)	4 DENV-3 mosquito pools ( <i>Ae. aegypti</i> 7/24, 8/6, 9/4)

County	Humans	Equines	Sentinel Chickens	Other
<b>Citrus</b>			9 EEEV (3/11), (4/1), (4/8), (5/28), (6/24), (7/7), (7/9), (9/30) 21 WNV (1/6), (2/10), (2/17), (8/12), (9/3), (9/9), (9/23), (9/30), (10/7), (10/14), (10/21), (10/28), (11/4)	
<b>Duval</b>	1 WNV (August)		15 WNV (8/12), (8/18), (8/25), (9/2), (9/23), (9/29)	1 WNV duck (8/5)
<b>Charlotte</b>			2 WNV (7/18), (10/3)	
<b>Clay</b>	1 WNV (July)			
<b>Escambia</b>	4 WNV (August (3), October) 4 asymptomatic WNV blood donors (June (2), July, August)			
<b>Hernando</b>			1 EEEV (7/21) 7 WNV (9/29), (10/6), (11/10)	
<b>Hillsborough</b>	1 dengue (July)		1 EEEV (7/14) 29 WNV (4/21), (8/11), (8/18), (8/25), (9/2), (9/8), (9/11), (9/22), (9/30), (10/13), (10/27), (11/17)	
<b>Holmes</b>		1 EEEV (8/19)		
<b>Indian River</b>			3 WNV (1/2), (10/16)	
<b>Jefferson</b>		1 EEEV (6/12)		
<b>Lafayette</b>				1 EEEV emu flock outbreak (7/6 for the first emu)
<b>Lake</b>		1 EEEV (4/2)		
<b>Lee</b>			2 WNV (11/11)	
<b>Leon</b>			4 EEEV (7/22), (8/13), (9/17), (10/13) 1 HJV (10/20) 13 WNV (7/22), (8/5), (8/13), (9/2), (9/9), (9/17), (10/13), (10/20), (11/4)	
<b>Levy</b>		1 EEEV (6/20)		
<b>Madison</b>		1 EEEV (6/30)		
<b>Manatee</b>			3 WNV (9/16), (10/21)	
<b>Martin</b>			1 EEEV (10/23) 9 WNV (9/11), (9/18), (9/25), (10/9), (10/16), (10/23), (11/6), (11/13)	
<b>Nassau</b>		1 EEEV (7/21)		
<b>Miami-Dade</b>	24 dengue (February, June, August (8), September (6), October (7), November) 1 asymptomatic WNV blood donor (July)			
<b>Orange</b>			19 EEEV (2/24), (4/7), (6/2), (6/9), (6/16), (6/23), (6/30), (7/14), (7/21), (7/28), (8/4), (8/18), (8/25), (9/2), (11/3), (11/10) 1 HJV (7/14) 13 WNV (3/31), (8/4), (8/25), (9/2), (9/9), (9/15), (10/6), (10/13)	1 EEEV emu (1/1)

County	Humans	Equines	Sentinel Chickens	Other
<b>Palm Beach</b>			35 WNV (1/7), (1/21), (1/27), (2/10), (2/17), (2/24), (3/10), (3/17), (4/29), (5/13), (6/16), (8/12), (9/8), (9/9), (9/23), (10/6), (10/20), (11/17)	
<b>Pasco</b>	1 dengue (July)		1 EEEV (7/7) 29 WNV (1/13), (8/18), (9/2), (9/8), (9/15), (9/22), (9/30), (10/6), (10/14), (10/20), (10/27), (11/3), (11/10), (11/21)	
<b>Pinellas</b>			30 WNV (1/6), (7/7), (8/4), (8/11), (8/18), (8/25), (9/2), (9/8), (9/15), (9/23), (9/29), (10/20), (10/21), (11/10), (11/17), (11/18)	
<b>Polk</b>			2 EEEV (6/2), (6/9) 16 WNV (6/16), (8/29), (9/2), (9/5), (9/12), (9/19), (9/26), (9/29), (10/3), (10/6), (10/20), (11/7), (11/14)	
<b>Putnam</b>			9 WNV (7/28), (8/11), (8/25), (9/8), (9/22)	
<b>Sarasota</b>			1 EEEV (7/8) 3 WNV (8/22), (8/29)	
<b>Seminole</b>		1 EEEV (1/5) 1 WNV (1/5)		
<b>St. Johns</b>	1 asymptomatic WNV blood donor (June)		2 EEEV (9/3), (9/8) 15 WNV (8/25), (9/3), (9/8), (9/15), (9/22), (10/7), (10/14), (10/20), (11/3), (11/10)	
<b>St. Lucie</b>			1 HJV (7/11) 2 SLEV (7/10), (8/20) 4 WNV (8/21), (9/24), (10/1), (10/20)	
<b>Sumter</b>			6 WNV (8/25), (9/8), (9/23), (9/30), (10/7)	
<b>Volusia</b>			3 EEEV (1/14), (4/8), (7/28) 1 SLEV (10/20) 26 WNV (6/23), (7/7), (7/28), (8/11), (8/25), (9/2), (9/8), (9/15), (9/22), (9/29), (10/13), (10/20), (11/3), (11/17)	1 EEEV emu (1/2)
<b>Walton</b>		1 EEEV (8/1)	11 EEEV (5/5), (6/2), (6/23), (6/30), (7/7), (7/14), (8/19) 4 HJV (6/23), (7/14), (10/20) 38 WNV (5/19), (7/14), (8/4), (8/11), (8/25), (9/2), (9/9), (9/15), (9/16), (9/29), (10/6), (10/7), (10/20), (11/3), (11/10), (11/17)	

### Acknowledgements and Data Sources

Contributors: Andrea Morrison, PhD, MSPH, Rebecca Zimler, PhD, MPH, Olga Ospina, MPH, and Danielle Stanek, DVM, DOH Bureau of Epidemiology; Lea Heberlein, DrPH; Peter Dumoulin, PhD, Maribel Castaneda, Edgar Kopp, MS, Brittany Rowlette, and Amanda Davis, BS; DOH Bureau of Public Health Laboratories.

**For more surveillance information, please see the DOH website at: [www.floridahealth.gov/diseases-and-conditions/mosquito-borne-diseases/surveillance.html](http://www.floridahealth.gov/diseases-and-conditions/mosquito-borne-diseases/surveillance.html)**

**For arbovirus surveillance information for the United States, please see the Centers for Disease Control and Prevention website at: [www.cdc.gov/ncidod/dvbid/westnile/surv&control.htm](http://www.cdc.gov/ncidod/dvbid/westnile/surv&control.htm)**

Case tallies included in the weekly Florida arbovirus surveillance report include confirmed and probable cases for EEE, WNV infection, SLE, dengue, chikungunya, and malaria by date of onset. Suspect cases are not included. Activity is mapped by county of exposure rather than county of residence. Case definitions being used in Florida are consistent with national criteria provided by the Council of State and Territorial Epidemiologists (CSTE) and may be viewed at: [www.floridahealth.gov/diseases-and-conditions/disease-reporting-and-management/disease-reporting-and-surveillance/index.html](http://www.floridahealth.gov/diseases-and-conditions/disease-reporting-and-management/disease-reporting-and-surveillance/index.html). Case tallies reported by CDC do not include suspect cases and cases are reported by patient state of residence rather than where the exposure occurred. Data is provided by county health departments, Department of Health Bureau of Public Health Laboratories, Department of Agriculture and Consumer Services, mosquito control agencies, Florida Fish and Wildlife Conservation Commission, medical providers and veterinarians. Equine cases are provided by the Department of Agriculture and Consumer Services.