



Florida Arbovirus Surveillance

Week 17: April 20-26, 2025

Arbovirus surveillance in Florida includes endemic mosquito-borne viruses such as West Nile virus (WNV), Eastern equine encephalitis virus (EEEV), and St. Louis encephalitis virus (SLEV), as well as exotic viruses such as dengue virus (DENV), chikungunya virus (CHIKV), Zika virus (ZIKV) and California encephalitis group viruses (CEV). Malaria, a parasitic mosquito-borne disease is also included. During the period of April 20-26, 2025, the following arboviral activity was recorded in Florida.

WNV activity: No human cases of WNV infection were reported this week. No horses with WNV infection were reported this week. No sentinel chickens tested positive for antibodies to WNV this week. In 2025, positive samples from one horse and 20 sentinel chickens have been reported from 10 counties.

SLEV activity: No human cases of SLEV infection were reported this week. No sentinel chickens tested positive for antibodies to SLEV this week. In 2025, no cases of SLEV have been reported.

EEEV activity: No human cases of EEEV infection were reported this week. One horse with EEEV infection was reported this week in Lake County. No sentinel chickens tested positive for antibodies to EEEV this week. In 2025, positive samples from two horses, two emus, and seven sentinel chickens have been reported from five counties.

International Travel-Associated Dengue: Four cases of dengue were reported this week in persons that had international travel. In 2025, 64 travel-associated dengue cases have been reported.

Dengue Cases Acquired in Florida: No cases of locally acquired dengue were reported this week. In 2025, one case of locally acquired dengue has been reported from one county.

International Travel-Associated Chikungunya Fever Cases: No cases of chikungunya fever were reported this week in persons that had international travel. In 2025, one case of travel-associated chikungunya fever has been reported.

Chikungunya Fever Cases Acquired in Florida: No cases of locally acquired chikungunya fever were reported this week. In 2025, no cases of locally acquired chikungunya fever have been reported.

International Travel-Associated Oropouche Fever cases: No cases of Oropouche fever were reported this week in persons that had international travel. In 2025, no cases of travel-associated Oropouche fever have been reported.

International Travel-Associated Zika Fever Cases: No cases of Zika fever were reported this week in persons that had international travel. In 2025, no travel-associated Zika fever cases have been reported.

Zika Fever Cases Acquired in Florida: No cases of locally acquired Zika fever were reported this week. In 2025, no cases of locally acquired Zika fever have been reported.

Advisories/Alerts: Miami-Dade County is currently under a mosquito-borne illness alert. No other counties are currently under a mosquito-borne illness advisory or alert.

There are currently multiple travel health notices from the Centers for Disease Control and Prevention related to mosquito-borne diseases.

Dengue			Oropouche	Yellow Fever		Chikungunya	Malaria
Africa and the Middle East	Americas	Asia and the Pacific Islands	Americas	Africa	America	Asia	Africa
Burkina Faso	Brazil	Austral Islands	Barbados	Nigeria	Bolivia	Reunion (France)	Ethiopia
Comoros	Colombia	Fiji	Bolivia		Brazil		
Iran	Cuba	French Polynesia	Brazil (Espirito Santo)		Colombia		
Pakistan	Ecuador	Marquesas Islands	Brazil		Peru		
Sudan	Guadeloupe	Moorea	Colombia				
	Guatemala	Philippines	Cuba				
	Mexico	Tonga	Ecuador				
	Panama		Guyana				
	Saint Lucia		Panama (Darien)				
			Panama				
			Peru				
			Venezuela				

Level 1 Travel Health Notice, Level 2 Travel Health Alert: wwwnc.cdc.gov/travel/notices.

For a map of arboviral disease activity in the United States visit: <https://www.cdc.gov/fight-the-bite/at-risk/index.html>.

2025 Human Case Summary

2024 International Travel-Associated Chikungunya Cases: One case with onset in 2025 has been reported in an individual with travel history to a chikungunya-endemic area in the two weeks prior to onset. County reporting case was: Broward. Country of origin was: Indonesia.

2025 International Travel-Associated Dengue Cases: Sixty-four cases with onset in 2025 have been reported in individuals with travel history to a dengue-endemic area in the two weeks prior to onset. Counties reporting cases were: Broward (4), Collier (2), Duval, Hillsborough (5), Lake (2), Lee, Manatee, Marion, Miami-Dade (33), Okeechobee (3), Orange (5), Pasco, Palm Beach (3), St. Lucie, and Volusia. Two cases were reported in non-Florida residents. In 2025, fifty-five cases of dengue reported in Florida have been serotyped by PCR. Please see the table below for a breakdown of cases by country of origin and serotype.

Country of Exposure	DENV-1	DENV-2	DENV-3	DENV-4	Unknown	Total
Antigua and Barbuda			1			1
Bonaire			1			1
Brazil	1	3	1		3	8
Colombia	1	1				2
Cuba		1	3	24	5	33
Ecuador			1			1
Guatemala			1			1
Mexico			7			7
Nicaragua			2		1	3
Peru			1			1
Puerto Rico			5			5
US Virgin Islands		1				1
Total	2	6	23	24	9	64

2025 Dengue Cases Acquired in Florida: In 2025, one case of locally acquired dengue has been reported in Miami-Dade County with onset in February. One case has been serotyped by PCR. Please see the table below for a breakdown of cases by county and serotype.

County of Exposure	DENV-3	Total
Miami-Dade	1	1
Total	1	1

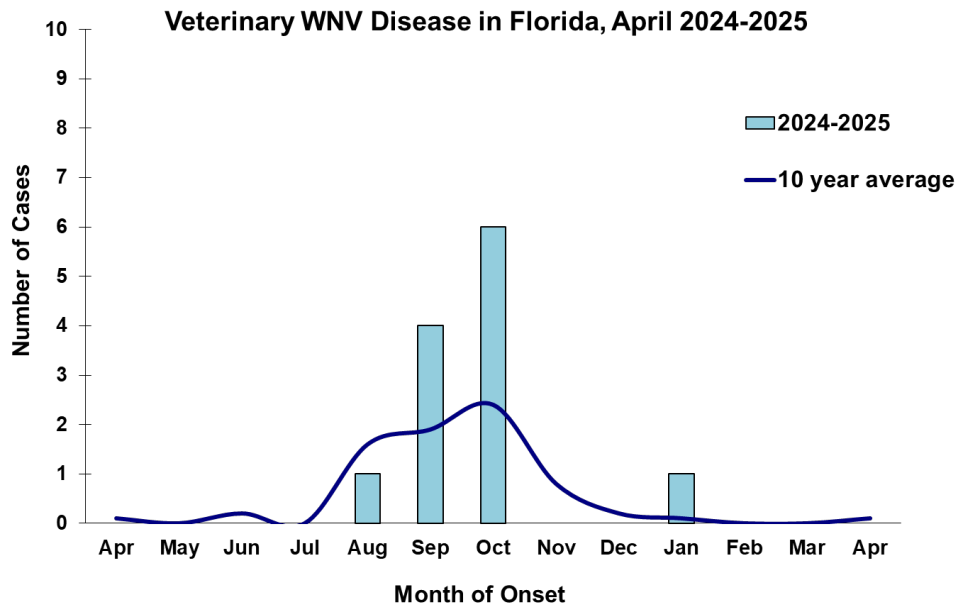
2025 International Travel-Associated Malaria Cases: Ten cases of malaria with onset in 2025 has been reported in an individual with a travel history to a malaria-endemic area. County reporting cases were: Alachua, Brevard, Broward (2), Miami-Dade (3), Orange, Palm Beach, and Polk counties. Four cases were reported in non-Florida residents. Please see the table below for a breakdown of cases by country of origin and *Plasmodium* species.

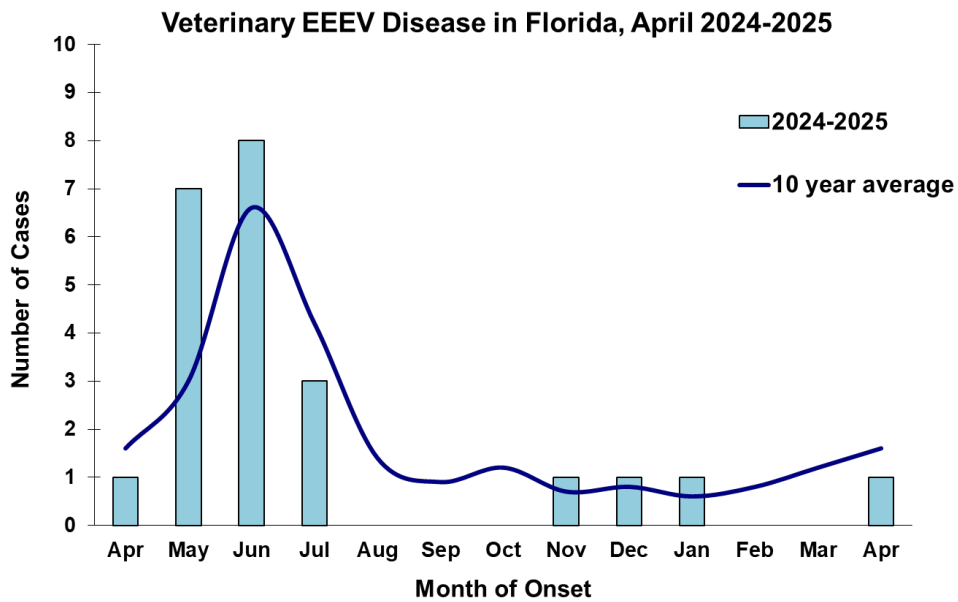
Country of Exposure	<i>Plasmodium falciparum</i>	<i>Plasmodium vivax</i>	Total
Cameroon	1		1
Central America		1	1
Central/South America		2	2
Côte D'Ivoire	1		1
Gambia	1		1
Honduras		1	1
Malawi	1		1
Nigeria	1		1
Rwanda	1		1
Total	6	4	10

Veterinary Cases**

**Veterinary cases are reported by date of onset. Only mammalian veterinary cases are included in the graphs.

One horse with EEEV infection was reported this week in Lake County.



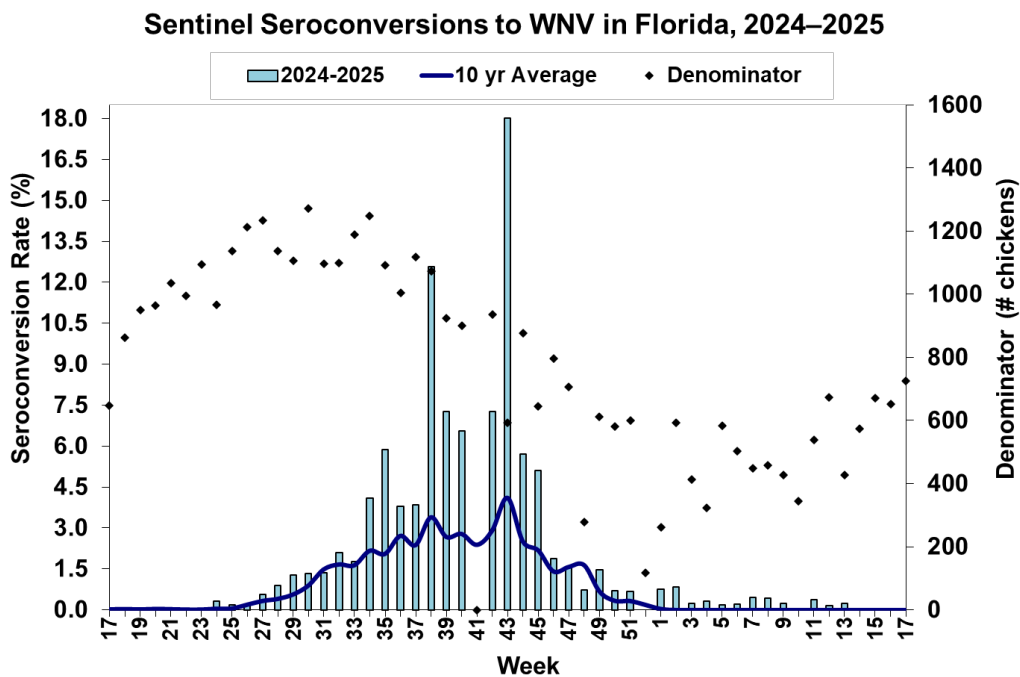


Sentinel Chickens

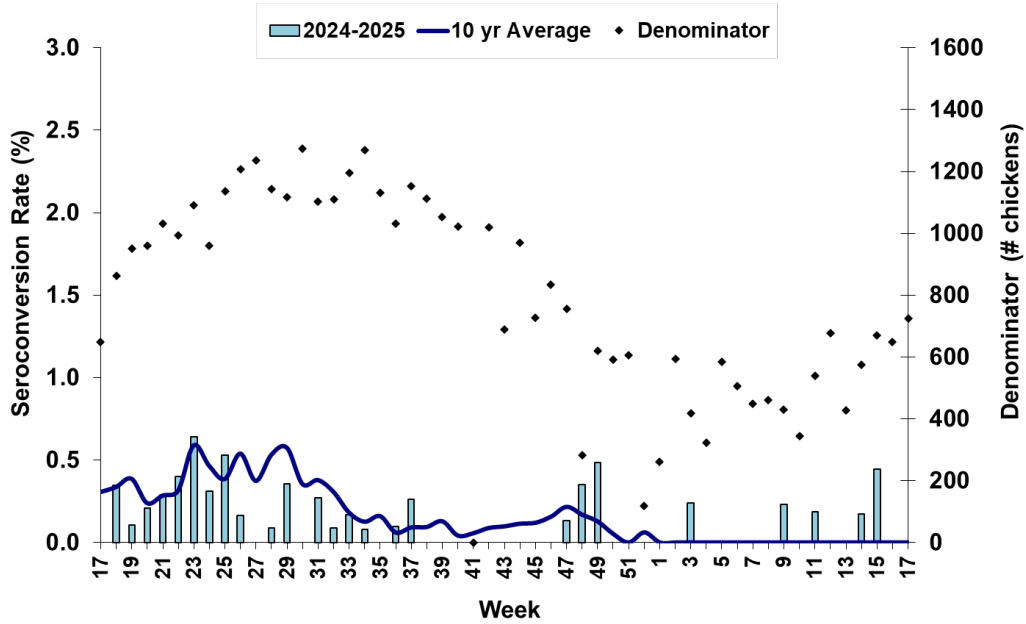
The table below is for the reporting of confirmatory laboratory results from this week. Some of the samples were collected at earlier dates. The date of collection is recorded for samples collected on that day along with the total number of positives and the corresponding seroconversion rate for the week the sample was collected.

No sentinel chickens tested positive for antibodies to SLEV, WNV, EEEV, or HJV this week.

County	Collection Date	Seroconversion Rates (%)						County Totals	
		Flavi	SLEV	WNV	Alpha	EEEV	HJV	Collection Week	YTD



Sentinel Seroconversions to EEEV in Florida, 2024–2025



Mosquito Pools

No mosquito pools tested positive for EEEV or WNV this week.

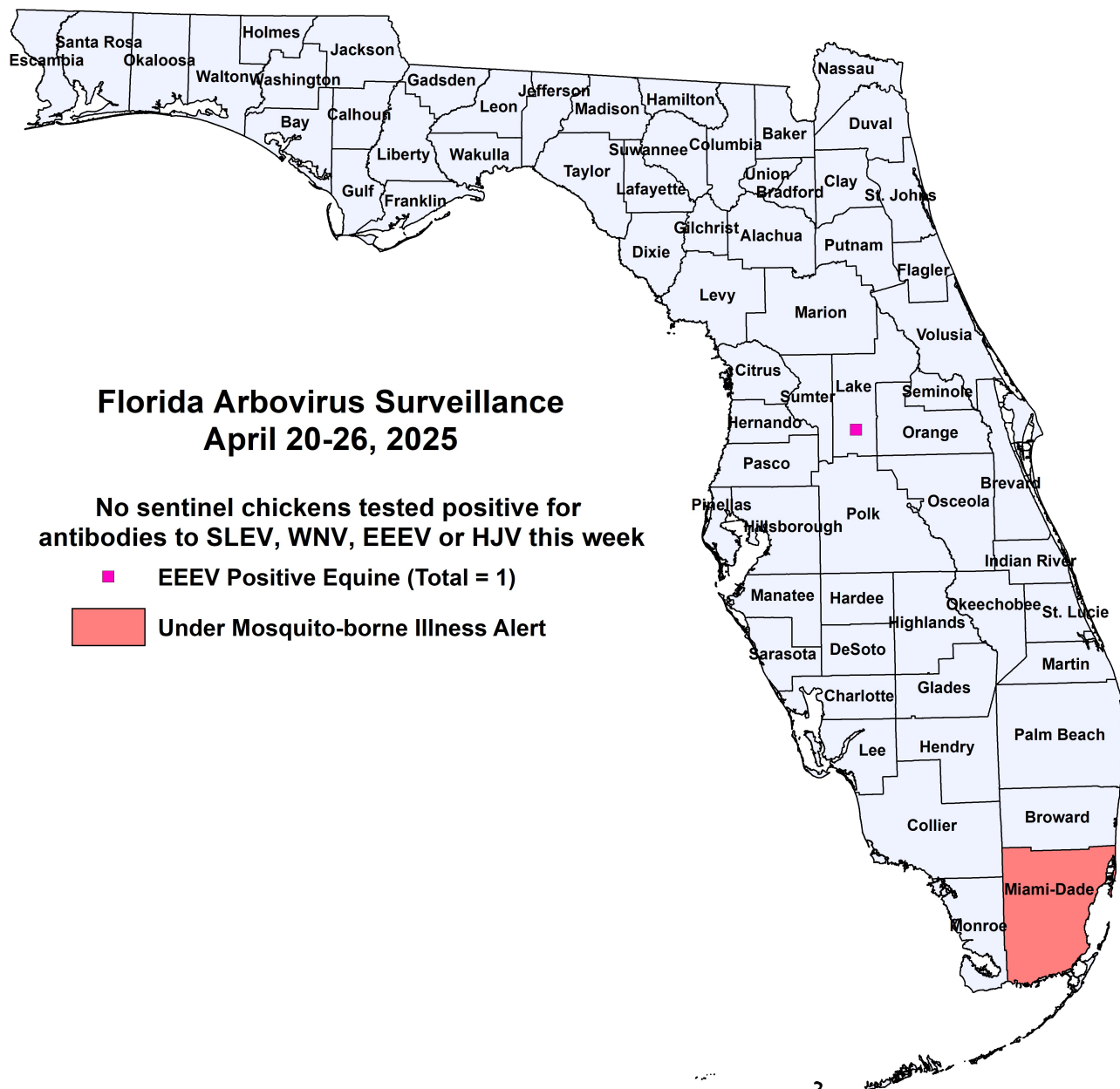
County	Collection Date	Result	Species	County YTD
--------	-----------------	--------	---------	------------

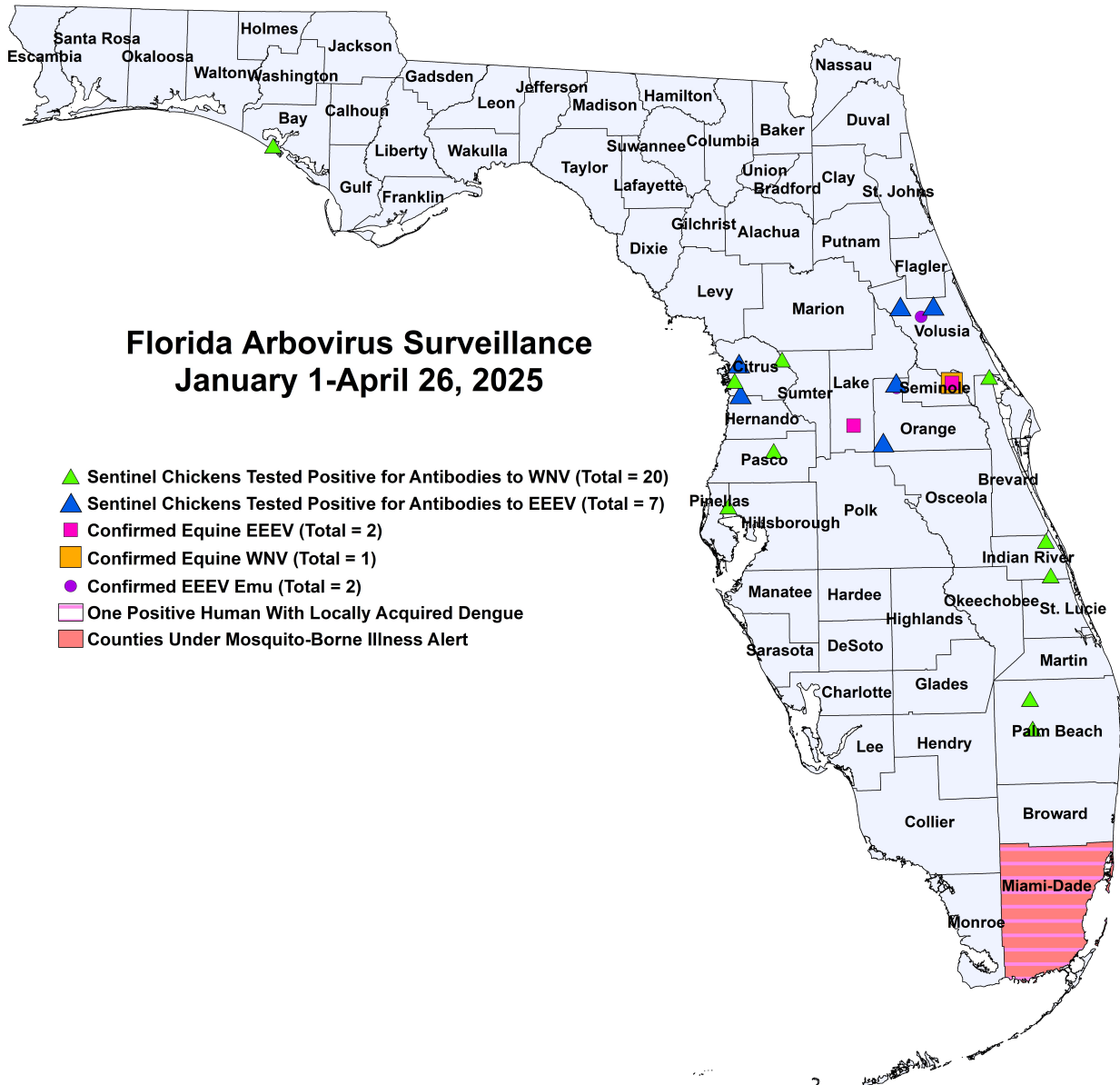
Dead Birds

The Fish and Wildlife Conservation Commission (FWC) collects reports of dead birds, which can be an indication of arbovirus circulation in an area. This week, 30 reports representing a total of 41 dead birds, including three crows, eight jays, and six raptors, were received from 20 counties.

In 2025, 721 reports representing a total of 1491 dead birds (25 crows, 20 jays, 173 raptors, 48 doves) were received from 56 of Florida's 67 counties.

County	Total Dead Birds	Crows	Jays	Raptors	Doves
Brevard	2	0	0	0	0
Broward	1	0	1	0	0
Charlotte	2	0	0	0	0
Clay	1	0	0	0	0
Collier	2	0	1	0	0
Duval	4	0	1	0	0
Hillsborough	2	0	0	0	0
Lake	1	1	0	0	0
Lee	4	0	3	1	0
Leon	3	0	0	3	0
Marion	2	0	0	1	0
Miami-Dade	1	1	0	0	0
Nassau	2	0	0	0	0
Pinellas	1	1	0	0	0
Polk	1	0	0	1	0
Santa Rosa	5	0	1	0	0
Sarasota	4	0	0	0	0
Seminole	1	0	0	0	0
Suwannee	1	0	0	0	0
Walton	1	0	1	0	0





2025 Mosquito-Borne Disease Activity by County

County	Humans	Equines	Sentinel Chickens	Other
Bay			1 WNV (3/24)	
Brevard			1 WNV (2/7)	
Citrus			4 WNV (1/6), (2/10), (2/17) 3 EEEV (3/11), (4/1), (4/8)	
Indian River			2 WNV (1/2)	
Lake		1 EEEV (4/2)		
Miami-Dade	1 dengue (February)			
Orange			2 EEEV (2/24), (4/7)	1 EEEV emu (1/1)
Palm Beach			10 WNV (1/7), (1/21), (1/27), (2/10), (2/17), (2/24), (3/10), (3/17)	
Pasco			1 WNV (1/13)	
Pinellas			1 WNV (1/6)	
Seminole		1 EEEV (1/5) 1 WNV (1/5)		
Volusia			2 EEEV (1/14), (4/8)	1 EEEV emu (1/2)

Acknowledgements and Data Sources

Contributors: Andrea Morrison, PhD, MSPH, Rebecca Zimler, PhD, MPH, Olga Ospina, MPH, and Danielle Stanek, DVM, DOH Bureau of Epidemiology; Lea Heberlein, DrPH; Peter Dumoulin, PhD, Maribel Castaneda, and Amanda Davis, BS; DOH Bureau of Public Health Laboratories.

For more surveillance information, please see the DOH website at: www.floridahealth.gov/diseases-and-conditions/mosquito-borne-diseases/surveillance.html

For arbovirus surveillance information for the United States, please see the Centers for Disease Control and Prevention website at: www.cdc.gov/ncidod/dvbid/westnile/surv&control.htm

Case tallies included in the weekly Florida arbovirus surveillance report include confirmed and probable cases for EEE, WNV infection, SLE, dengue, chikungunya, and malaria by date of onset. Suspect cases are not included. Activity is mapped by county of exposure rather than county of residence. Case definitions being used in Florida are consistent with national criteria provided by the Council of State and Territorial Epidemiologists (CSTE) and may be viewed at: www.floridahealth.gov/diseases-and-conditions/disease-reporting-and-management/disease-reporting-and-surveillance/index.html. Case tallies reported by CDC do not include suspect cases and cases are reported by patient state of residence rather than where the exposure occurred. Data is provided by county health departments, Department of Health Bureau of Public Health Laboratories, Department of Agriculture and Consumer Services, mosquito control agencies, Florida Fish and Wildlife Conservation Commission, medical providers and veterinarians. Equine cases are provided by the Department of Agriculture and Consumer Services.