



Florida Arbovirus Surveillance Week 37: September 7-13, 2025

Arbovirus surveillance in Florida includes endemic mosquito-borne viruses such as West Nile virus (WNV), Eastern equine encephalitis virus (EEEV), and St. Louis encephalitis virus (SLEV), as well as exotic viruses such as dengue virus (DENV), chikungunya virus (CHIKV), Zika virus (ZIKV), and California encephalitis group viruses (CEV). Malaria, a parasitic mosquito-borne disease is also included. During the period of September 7-13, 2025, the following arboviral activity was recorded in Florida.

WNV activity: One human case of WNV infection was reported this week in Escambia County. No horses with WNV infection were reported this week. Twenty-six sentinel chickens tested positive for antibodies to WNV in Citrus, Duval, Hillsborough, Leon, Orange, Pasco, Pinellas, Sarasota, and Walton counties. In 2025, positive samples from four humans, six asymptomatic blood donors, one horse, one duck, and 129 sentinel chickens have been reported from 24 counties.

SLEV activity: No human cases of SLEV infection were reported this week. No sentinel chicken tested positive for antibodies to SLEV this week. In 2025, positives samples from three sentinel chickens have been reported from two counties.

EEEV activity: No human cases of EEEV infection were reported this week. One horse with EEEV infection was reported in Walton County. No sentinel chickens tested positive for antibodies to EEEV this week. In 2025, positive samples from nine horses, two emus, one emu flock, one goat, and 45 sentinel chickens have been reported from 21 counties.

International Travel-Associated Dengue: Nine cases of dengue were reported this week in persons that had international travel. In 2025, 198 travel-associated dengue cases have been reported.

Dengue Cases Acquired in Florida: Eleven cases of locally acquired dengue were reported this week. In 2025, positives samples from 35 humans and four mosquito pools have been reported from four counties.

International Travel-Associated Chikungunya Fever Cases: No cases of chikungunya fever were reported this week in persons that had international travel. In 2025, eleven cases of travel-associated chikungunya fever have been reported.

Chikungunya Fever Cases Acquired in Florida: No cases of locally acquired chikungunya fever were reported this week. In 2025, no cases of locally acquired chikungunya fever have been reported.

International Travel-Associated Oropouche Fever cases: No cases of Oropouche fever were reported this week in persons that had international travel. In 2025, no cases of travel-associated Oropouche fever have been reported.

International Travel-Associated Zika Fever Cases: No cases of Zika fever were reported this week in persons that had international travel. In 2025, no travel-associated Zika fever cases have been reported.

Zika Fever Cases Acquired in Florida: No cases of locally acquired Zika fever were reported this week. In 2025, no cases of locally acquired Zika fever have been reported.

Advisories/Alerts: Alachua, Bay, Clay, Duval, Hillsborough, Lafayette, Leon, Pasco, and Pinellas counties are currently under a mosquito-borne illness advisory. Brevard, Escambia, and Miami-Dade counties are currently under a mosquito-borne illness alert.

There are currently multiple travel health notices from the Centers for Disease Control and Prevention related to mosquito-borne diseases.

Dengue			Oropouche	Yellow Fever	Chikungunya		Malaria
Africa and the Middle East	Americas	Asia and the Pacific Islands	Americas	Americas	Africa	Asia	Africa
Comoros	Colombia	Austral Islands	Brazil	Colombia	Kenya	Bangladesh	Ethiopia
Samoa	Cuba	Bangladesh	Cuba		Madagascar	China	
	El Salvador	Cook Islands, NZ	Panama		Somalia		
	Guatemala	Fiji	Peru		Sri Lanka		
	Mexico	French Polynesia					
	Panama	Kiribati					
		Mali					
		Marquesas Islands					
		Nauru					
		Philippines					
		Tonga					
		Tuvalu					

Level 1 Travel Health Notice, Level 2 Travel Health Alert: wwwnc.cdc.gov/travel/notices.

For a map of arboviral disease activity in the United States visit: <https://www.cdc.gov/fight-the-bite/at-risk/index.html>.

2025 Human Case Summary

West Nile Virus Illness Acquired in Florida: In 2025, four human cases of WNV illness acquired in Florida have been reported in Clay (July), Duval (August), and Escambia (August) counties. Six asymptomatic blood donors have been reported in Escambia (June, July, August), Miami-Dade (July), and St. Johns (June) counties.

2025 International Travel-Associated Chikungunya Cases: Eleven cases with onset in 2025 have been reported in individuals with travel history to a chikungunya-endemic area in the two weeks prior to onset. Counties reporting cases were: Broward (4), Collier, Lake, Miami-Dade (2), Palm Beach, and Seminole (2). Countries of origin were: Bangladesh, Bolivia, Brazil (2), Cuba (2), India (2), Indonesia, and Sri Lanka (2).

2025 International Travel-Associated Dengue Cases: One hundred ninety-eight cases with onset in 2025 have been reported in individuals with travel history to a dengue-endemic area in the two weeks prior to onset. Counties reporting cases were: Bay, Brevard (2), Broward (12), Clay, Collier (3), Duval (3), Escambia, Hillsborough (9), Lake (4), Lee (8), Manatee (2), Marion, Miami-Dade (119), Monroe, Okeechobee (3), Orange (8), Osceola (2), Palm Beach (7), Pasco, Pinellas (4), Polk, Seminole, St. Johns, St. Lucie (2), and Volusia. Nine cases were reported in non-Florida residents. In 2025, 168 cases of dengue reported in Florida have been serotyped by PCR. Please see the table below for a breakdown of cases by country of origin and serotype.

Country of Exposure	DENV-1	DENV-2	DENV-3	DENV-4	Unknown	Total
Antigua and Barbuda			1			1
Argentina	2					2
Bahamas			1			1
Bonaire			1			1
Brazil	1	4	1		3	9
Colombia	1	1	2			4
Cuba		6	8	89	16	119
Curacao			1			1
Dominica			1			1
Dominican Republic			1			1
Ecuador			3			3
El Salvador			1			1
French Polynesia	1				1	2
Guatemala			2			2

Country of Exposure	DENV-1	DENV-2	DENV-3	DENV-4	Unknown	Total
Guyana		6			1	7
Mexico			8			8
Nicaragua			7		2	9
Peru			1		1	2
Philippines					1	1
Puerto Rico			10	1	2	13
Puerto Rico/Dominican Republic		1				1
Sri Lanka					1	1
St. Barts			3			3
St. Barts/St. Martin			1			1
Surinam		1				1
US Virgin Islands		1			2	3
Total	5	20	53	90	30	198

2025 Dengue Cases Acquired in Florida: In 2025, 35 cases of locally acquired dengue have been reported in Brevard (27), Hillsborough, Miami-Dade (6), and Pasco counties with onset in February, May, June, July, August, and September. Twenty-seven cases have been serotyped by PCR. Please see the table below for a breakdown of cases by county and serotype.

County of Exposure	DENV-1	DENV-2	DENV-3	DENV-4	Unknown	Total
Brevard			20		7	27
Hillsborough				1		1
Miami-Dade		1	1	3	1	6
Pasco	1					1
Total	1	1	21	4	8	35

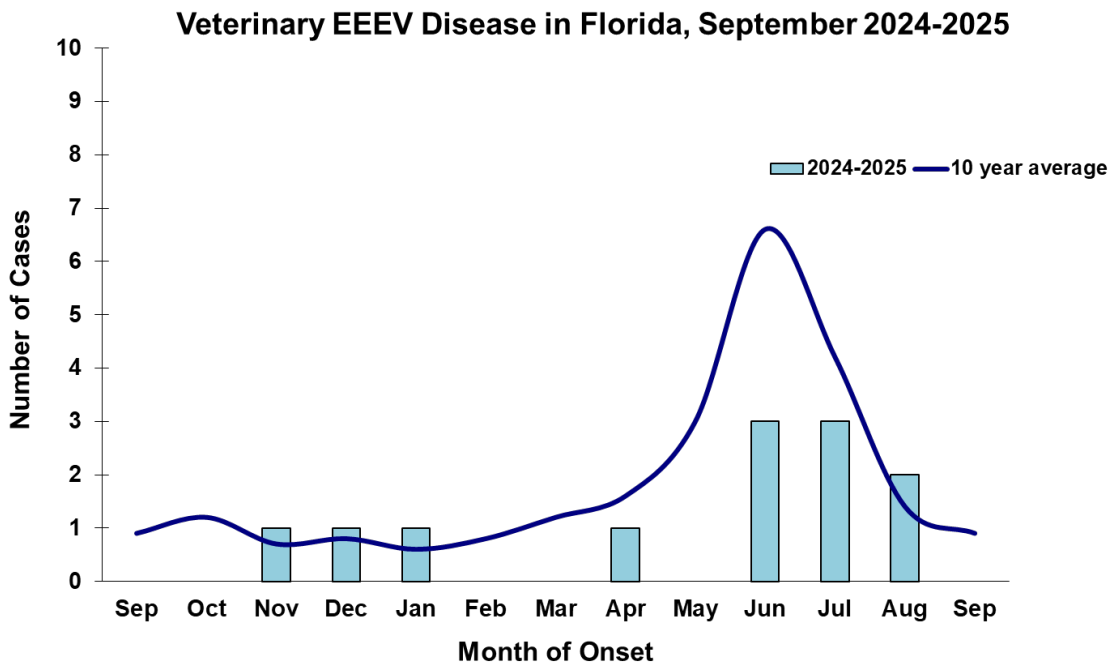
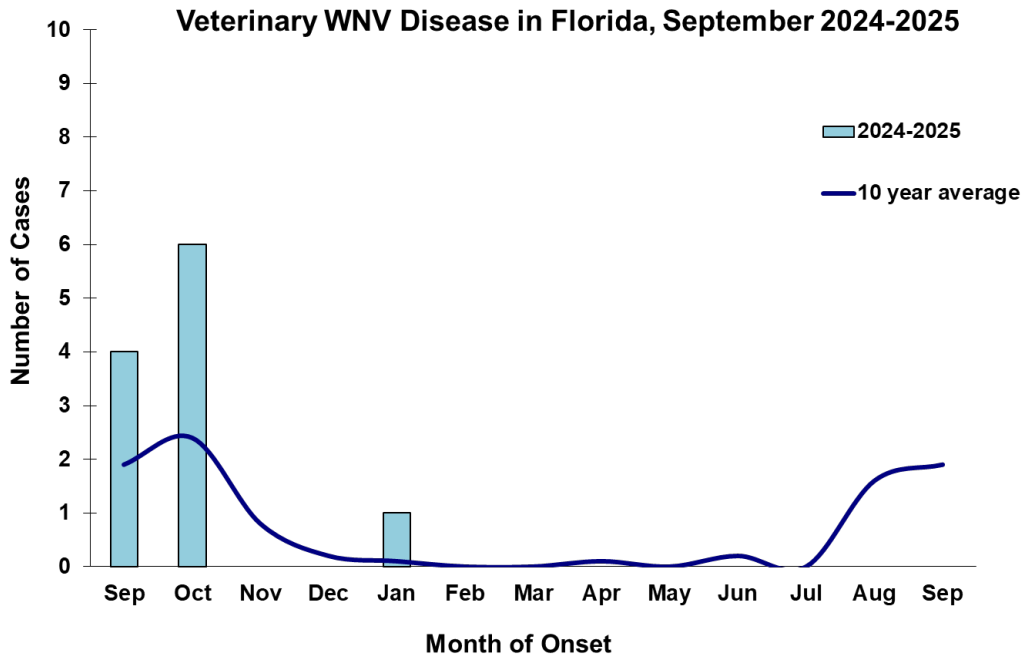
2025 International Travel-Associated Malaria Cases: Thirty-seven cases with onset in 2025 have been reported in individuals with travel history to a malaria-endemic area. Counties reporting cases were: Alachua (2), Brevard, Broward (5), Collier, Duval, Hillsborough (2), Lake, Leon, Manatee, Marion (2), Miami-Dade (4), Nassau (2), Orange (4), Palm Beach (4), Pasco, Polk (2), St. Lucie (2), and Volusia. Eleven cases were reported in non-Florida residents. Please see the table below for a breakdown of cases by country of origin and *Plasmodium* species.

Country of Exposure	<i>Plasmodium falciparum</i>	<i>Plasmodium ovale</i>	<i>Plasmodium vivax</i>	Total
Africa	3			3
Angola	1			1
Cameroon	1			1
Central America			1	1
Central Africa	1			1
Central/South America			2	2
Côte D'Ivoire	1			1
Gambia	1			1
Ghana	1			1
Guinea	1			1
Haiti	1			1
Honduras			1	1
India			1	1
Liberia	2			2
Malawi	1			1
Nigeria	12	1		13
Peru			1	1
Rwanda	1			1
Sierra Leone	1			1
Uganda	1			1
Uganda/Kenya	1			1
Total	30	1	6	37

Veterinary Cases**

**Veterinary cases are reported by date of onset. Only mammalian veterinary cases are included in the graphs.

One horse with EEEV infection was reported in Walton County.



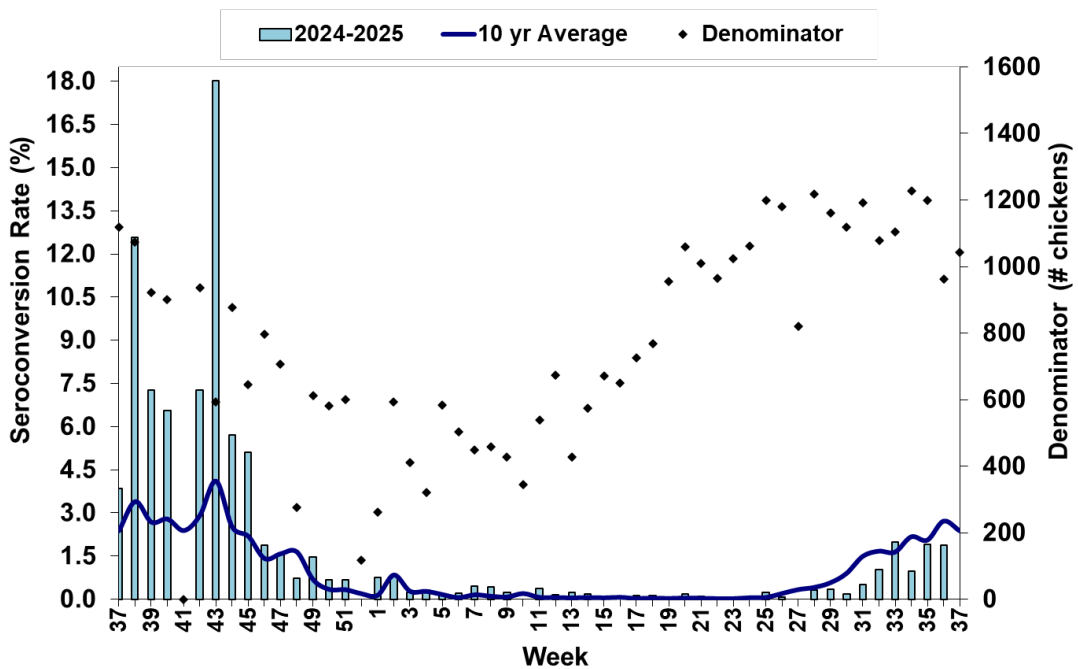
Sentinel Chickens

The table below is for the reporting of confirmatory laboratory results from this week. Some of the samples were collected at earlier dates. The date of collection is recorded for samples collected on that day along with the total number of positives and the corresponding seroconversion rate for the week the sample was collected.

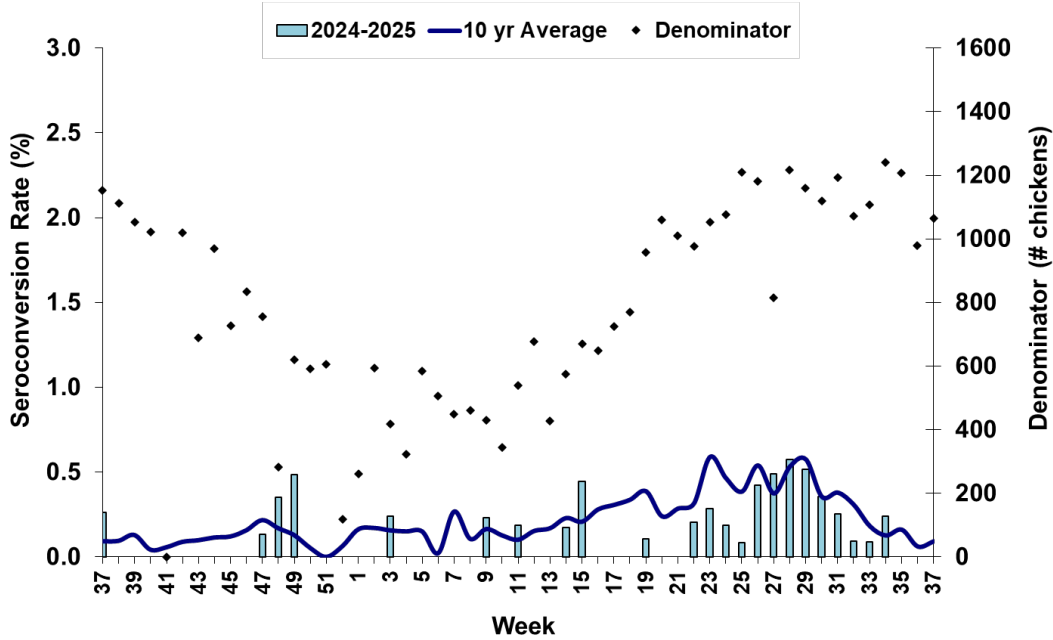
Twenty-six sentinel chickens tested positive for antibodies to WNV in Citrus, Duval, Hillsborough, Leon, Orange, Pasco, Pinellas, Sarasota, and Walton counties.

County	Collection Date	Seroconversion Rates (%)					County Totals		
		Flavi	SLEV	WNV	Alpha	EEEV	HJV	Collection Week	YTD
Citrus	9/3/2025	5.00		5.00				3 WNV	8 EEEV, 8 WNV
Duval	9/2/2025	4.35		4.35				1 WNV	12 WNV
Hillsborough	8/18/2025	2.27		2.27				1 WNV	1 EEEV, 12 WNV
	8/25/2025	2.00		2.00				1 WNV	
	9/2/2025	2.27		2.27				1 WNV	
Leon	9/2/2025	7.14		7.14				1 WNV	2 EEEV, 7 WNV
Orange	9/2/2025	0.83		0.83				1 WNV	14 EEEV, 1, HJV, 3 WNV
Pasco	8/18/2025	3.33		3.33				2 WNV	1 EEEV, 8 WNV
	9/2/2025	8.33		8.33				5 WNV	
Pinellas	8/18/2025	5.66		5.66				3 WNV	18 WNV
	9/2/2025	8.33		8.33				4 WNV	
Sarasota	8/29/2025	1.39		1.39				1 WNV	1 EEEV, 3 WNV
Walton	9/2/2025	4.55		4.55				2 WNV	10 EEEV, 3 HJV, 12 WNV

Sentinel Seroconversions to WNV in Florida, 2024–2025



Sentinel Seroconversions to EEEV in Florida, 2024–2025



Mosquito Pools

No mosquito pools tested positive for EEEV or WNV this week.

County	Collection Date	Result	Species	County YTD
--------	-----------------	--------	---------	------------

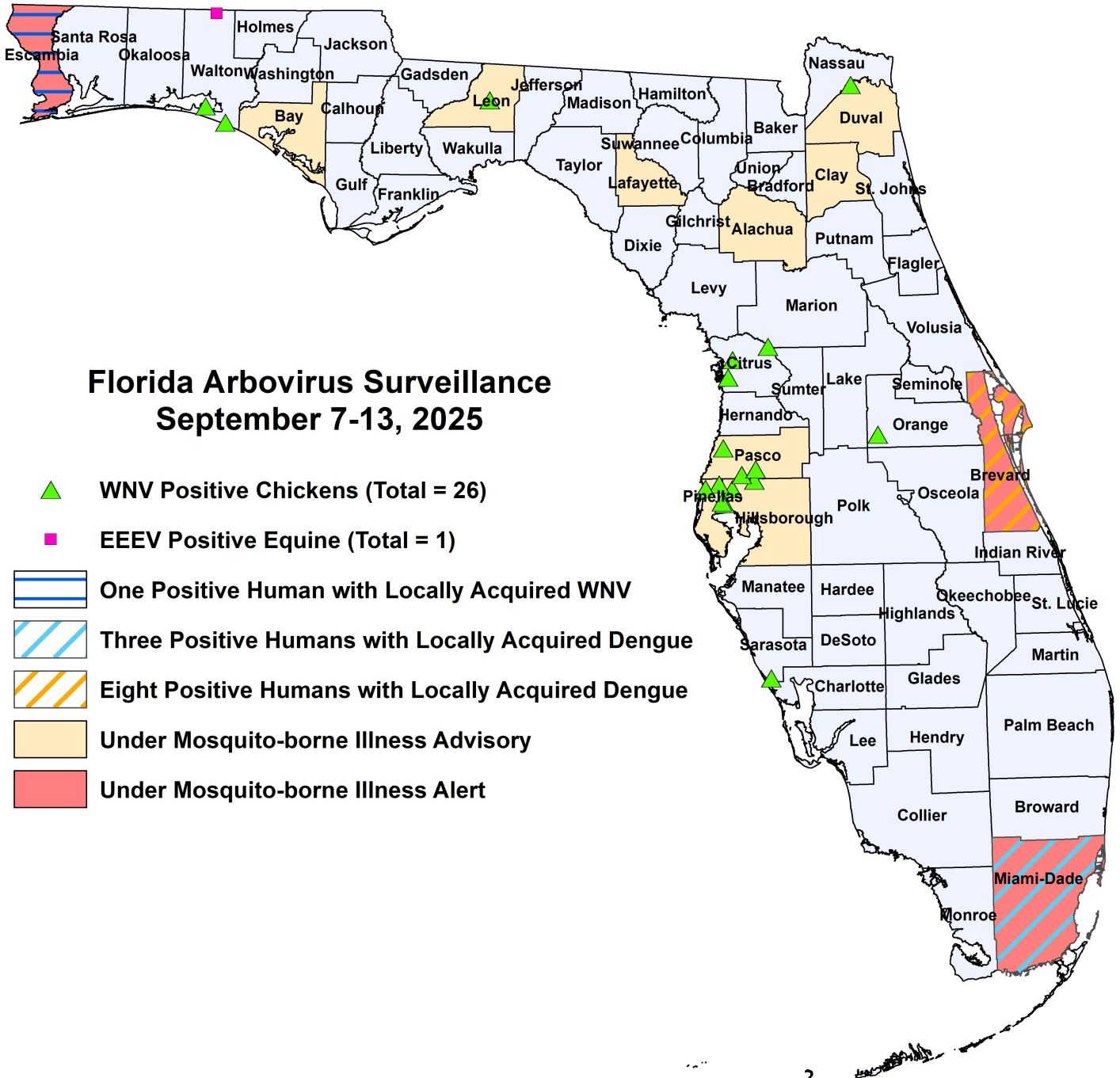
Dead Birds

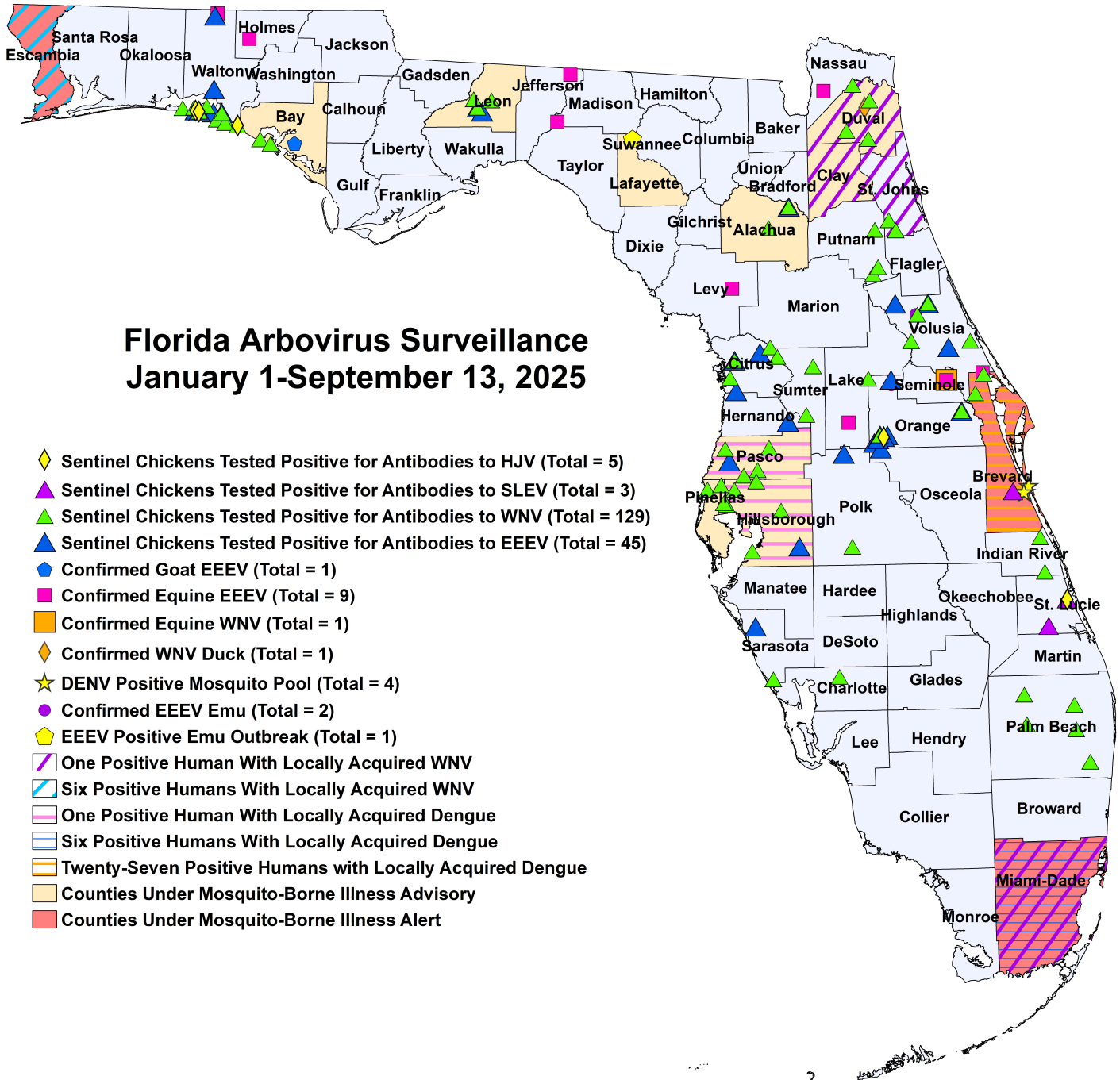
The Fish and Wildlife Conservation Commission (FWC) collects reports of dead birds, which can be an indication of arbovirus circulation in an area. This week, 12 reports representing a total of 67 dead birds, including one crow, were received from 10 counties.

In 2025, 1145 reports representing a total of 2508 dead birds (91 crows, 43 jays, 248 raptors, 216 doves) were received from 58 of Florida's 67 counties.

2025

County	Total Dead Birds	Crows	Jays	Raptors	Doves
Alachua	1	0	0	0	0
Bay	7	0	0	0	0
Collier	1	0	0	0	0
Duval	1	0	0	0	0
Nassau	1	0	0	0	0
Orange	1	1	0	0	0
Palm Beach	16	0	0	0	0
Pinellas	20	0	0	0	0
Sarasota	17	0	0	0	0
Seminole	2	0	0	0	0





2025 Mosquito-Borne Disease Activity by County

County	Humans	Equines	Sentinel Chickens	Other
Alachua			2 EEEV (7/24), (7/31) 5 WNV (7/24), (7/31), (8/5)	
Bay			4 WNV (3/24), (8/4)	1 EEEV goat (7/23)
Brevard	27 dengue (May, July (9), August (16), September)	1 EEEV (7/18)	1 SLEV (7/9) 2 WNV (2/7), (7/18)	4 DENV-3 mosquito pools (<i>Ae. aegypti</i> 7/24, 8/6, 9/4)

County	Humans	Equines	Sentinel Chickens	Other
Citrus			8 EEEV (3/11), (4/1), (4/8), (5/28), (6/24), (7/7), (7/9) 8 WNV (1/6), (2/10), (2/17), (8/12), (9/3)	
Duval	1 WNV (August)		12 WNV (8/12), (8/18), (8/25), (9/2)	1 WNV duck (8/5)
Charlotte			1 WNV (7/18)	
Clay	1 WNV (July)			
Escambia	2 WNV (August (2)) 4 asymptomatic WNV blood donors (June (2), July, August)			
Hernando			1 EEEV (7/21)	
Hillsborough	1 dengue (July)		1 EEEV (7/14) 12 WNV (4/21), (8/11), (8/18), (8/25), (9/2)	
Holmes		1 EEEV (8/19)		
Indian River			2 WNV (1/2)	
Jefferson		1 EEEV (6/12)		
Lafayette				1 EEEV emu flock outbreak (7/6 for the first emu)
Lake		1 EEEV (4/2)		
Leon			2 EEEV (7/22), (8/13) 7 WNV (7/22), (8/5), (8/13), (9/2)	
Levy		1 EEEV (6/20)		
Madison		1 EEEV (6/30)		
Nassau		1 EEEV (7/21)		
Miami-Dade	6 dengue (February, June, August (4)) 1 asymptomatic WNV blood donor (July)			
Orange			14 EEEV (2/24), (4/7), (6/2), (6/9), (6/16), (6/23), (6/30), (7/14), (7/21), (7/28), (8/4), (8/18) 1 HJV (7/14) 3 WNV (3/31), (8/4), (9/2)	1 EEEV emu (1/1)
Palm Beach			16 WNV (1/7), (1/21), (1/27), (2/10), (2/17), (2/24), (3/10), (3/17), (4/29), (5/13), (6/16), (8/12)	
Pasco	1 dengue (July)		1 EEEV (7/7) 8 WNV (1/13), (8/18), (9/2)	
Pinellas			18 WNV (1/6), (7/7), (8/4), (8/11), (8/18), (8/25), (9/2)	
Polk			2 EEEV (6/2), (6/9) 1 WNV (6/16)	
Putnam			5 WNV (7/28), (8/11), (8/25)	
Sarasota			1 EEEV (7/8) 3 WNV (8/22), (8/29)	
Seminole		1 EEEV (1/5) 1 WNV (1/5)		
St. Johns	1 asymptomatic WNV blood donor (June)		2 WNV (8/25)	
St. Lucie			1 HJV (7/11) 2 SLEV (7/10), (8/20)	
Sumter			2 WNV (8/25)	

County	Humans	Equines	Sentinel Chickens	Other
Volusia			3 EEEV (1/14), (4/8), (7/28) 6 WNV (6/23), (7/7), (7/28), (8/11), (8/25)	1 EEEV emu (1/2)
Walton		1 EEEV (8/1)	10 EEEV (5/5), (6/2), (6/23), (6/30), (7/7), (7/14), (8/19) 3 HJV (6/23), (7/14) 12 WNV (5/19), (7/14), (8/4), (8/11), (8/25), (9/2)	

Acknowledgements and Data Sources

Contributors: Andrea Morrison, PhD, MSPH, Rebecca Zimler, PhD, MPH, Olga Ospina, MPH, and Danielle Stanek, DVM, DOH Bureau of Epidemiology; Lea Heberlein, DrPH; Peter Dumoulin, PhD, Maribel Castaneda, and Amanda Davis, BS; DOH Bureau of Public Health Laboratories.

For more surveillance information, please see the DOH website at: www.floridahealth.gov/diseases-and-conditions/mosquito-borne-diseases/surveillance.html

For arbovirus surveillance information for the United States, please see the Centers for Disease Control and Prevention website at: www.cdc.gov/ncidod/dvbid/westnile/surv&control.htm

Case tallies included in the weekly Florida arbovirus surveillance report include confirmed and probable cases for EEE, WNV infection, SLE, dengue, chikungunya, and malaria by date of onset. Suspect cases are not included. Activity is mapped by county of exposure rather than county of residence. Case definitions being used in Florida are consistent with national criteria provided by the Council of State and Territorial Epidemiologists (CSTE) and may be viewed at: www.floridahealth.gov/diseases-and-conditions/disease-reporting-and-management/disease-reporting-and-surveillance/index.html. Case tallies reported by CDC do not include suspect cases and cases are reported by patient state of residence rather than where the exposure occurred. Data is provided by county health departments, Department of Health Bureau of Public Health Laboratories, Department of Agriculture and Consumer Services, mosquito control agencies, Florida Fish and Wildlife Conservation Commission, medical providers and veterinarians. Equine cases are provided by the Department of Agriculture and Consumer Services.