



Florida Arbovirus Surveillance Week 43: October 19-25, 2025

Arbovirus surveillance in Florida includes endemic mosquito-borne viruses such as West Nile virus (WNV), Eastern equine encephalitis virus (EEEV), and St. Louis encephalitis virus (SLEV), as well as exotic viruses such as dengue virus (DENV), chikungunya virus (CHIKV), Zika virus (ZIKV), and California encephalitis group viruses (CEV). Malaria, a parasitic mosquito-borne disease is also included. During the period of October 19-25, 2025, the following arboviral activity was recorded in Florida.

WNV activity: No human cases of WNV infection were reported this week. No horses with WNV infection were reported this week. Fifteen sentinel chickens tested positive for antibodies to WNV in Bay, Citrus, Hillsborough, Martin, Orange, Pasco, St. Johns, Sumter, Volusia and Walton counties. In 2025, positive samples from five symptomatic humans, seven asymptomatic blood donors, one horse, one duck, and 291 sentinel chickens have been reported from 28 counties.

SLEV activity: No human cases of SLEV infection were reported this week. No sentinel chickens tested positive for antibodies to SLEV this week. In 2025, positive samples from three sentinel chickens have been reported from two counties.

EEEV activity: No human cases of EEEV infection were reported this week. No horses with EEEV infection were reported this week. No sentinel chickens tested positive for antibodies to EEEV this week. In 2025, positive samples from nine horses, two emus, one emu flock, one goat, and 52 sentinel chickens have been reported from 22 counties.

International Travel-Associated Dengue: Twenty-six cases of dengue were reported this week in persons that had international travel. In 2025, 315 travel-associated dengue cases have been reported.

Dengue Cases Acquired in Florida: Three cases of locally acquired dengue were reported this week. In 2025, positive samples from 53 humans and four mosquito pools have been reported from four counties.

International Travel-Associated Chikungunya Fever Cases: Eight cases of chikungunya fever were reported this week in persons that had international travel. In 2025, thirty-five cases of travel-associated chikungunya fever have been reported.

Chikungunya Fever Cases Acquired in Florida: No cases of locally acquired chikungunya fever were reported this week. In 2025, no cases of locally acquired chikungunya fever have been reported.

International Travel-Associated Oropouche Fever cases: No cases of Oropouche fever were reported this week in persons that had international travel. In 2025, no cases of travel-associated Oropouche fever have been reported.

International Travel-Associated Zika Fever Cases: No cases of Zika fever were reported this week in persons that had international travel. In 2025, no travel-associated Zika fever cases have been reported.

Zika Fever Cases Acquired in Florida: No cases of locally acquired Zika fever were reported this week. In 2025, no cases of locally acquired Zika fever have been reported.

Advisories/Alerts: Alachua, Bay, Clay, Duval, Hernando, Hillsborough, Lafayette, Leon, Palm Beach, Pasco, and Pinellas counties are currently under a mosquito-borne illness advisory. Brevard, Escambia, and Miami-Dade counties are currently under a mosquito-borne illness alert.

There are currently multiple travel health notices from the Centers for Disease Control and Prevention related to mosquito-borne diseases.

Dengue			Oropouche	Yellow Fever	Chikungunya			Rift Valley Fever	Malaria
Africa and Middle East	Americas	Asia and the Pacific Islands	Americas	Americas	Africa	Americas	Asia	Africa	Africa
Comoros	Belize	Austral Islands	Brazil	Colombia	Kenya	Cuba	Bangladesh	Senegal	Ethiopia
Samoa	Colombia	Bangladesh	Cuba		Madagascar		China		
Sudan	Cuba	Cook Islands, NZ	Panama		Somalia				
	El Salvador	French Polynesia	Peru		Sri Lanka				
	Panama	Kiribati							
		Mali							
		Marquesas Islands							
		Nauru							
		Philippines							
		Tuvalu							
		Vietnam							

Level 1 Travel Health Notice, Level 2 Travel Health Alert: wwwnc.cdc.gov/travel/notices.

For a map of arboviral disease activity in the United States visit: <https://www.cdc.gov/fight-the-bite/at-risk/index.html>.

2025 Human Case Summary

West Nile Virus Illness Acquired in Florida: In 2025, five human cases of WNV illness acquired in Florida have been reported in Clay (July), Duval (August), and Escambia (August) counties. Seven asymptomatic blood donors have been reported in Bay (October), Escambia (June, July, August), Miami-Dade (July), and St. Johns (June) counties.

2025 International Travel-Associated Chikungunya Cases: Thirty-five cases with onset in 2025 have been reported in individuals with travel history to a chikungunya-endemic area in the two weeks prior to onset. Counties reporting cases were: Broward (8), Collier, Hendry, Hillsborough (4), Lake, Miami-Dade (15), Orange (2), Palm Beach, and Seminole (2). Countries of origin were: Bangladesh (2), Bolivia, Brazil (2), Cuba (25), India (2), Indonesia, and Sri Lanka (2).

2025 International Travel-Associated Dengue Cases: Three hundred fifteen cases with onset in 2025 have been reported in individuals with travel to a dengue-endemic area in the two weeks prior to onset. Counties reporting cases were: Bay, Brevard (5), Broward (13), Clay, Collier (5), Duval (5), Escambia, Hernando (2), Hillsborough (19), Indian River, Lake (4), Lee (12), Manatee (2), Marion, Miami-Dade (192), Monroe (5), Okeechobee (3), Orange (9), Osceola (4), Palm Beach (10), Pasco, Pinellas (7), Polk (4), Sarasota, Seminole, St. Johns, St. Lucie (3), and Volusia (2). Nine cases were reported in non-Florida residents. In 2025, 264 cases of dengue reported in Florida have been serotyped by PCR. Please see the table below for a breakdown of cases by country of origin and serotype.

Country of Exposure	DENV-1	DENV-2	DENV-3	DENV-4	Unknown	DENV2/ DENV3	Total
Antigua and Barbuda			1				1
Argentina	2						2
Bahamas			1				1
Bonaire			1				1
Brazil	1	4	1			3	9
Colombia	1	1	2			2	6
Cuba		14	13	162	1	26	216
Cuba/Mexico						1	1
Curacao			1				1

Country of Exposure	DENV-1	DENV-2	DENV-3	DENV-4	Unknown	DENV2/ DENV3	Total
Dominica			1				1
Dominican Republic			1				1
Ecuador			3				3
El Salvador			2			2	4
French Polynesia	1					1	2
Guatemala			2				2
Guyana		7				1	8
India						1	1
Mexico			9				9
Nicaragua	1		10			4	15
Peru			1			1	2
Philippines						1	1
Puerto Rico		1	11	1		4	17
Puerto Rico/Dominican Republic		1				1	2
Sri Lanka						1	1
St. Barts			3				3
St. Barts/St. Martin			1				1
Surinam		1					1
US Virgin Islands		1				2	3
Total	6	30	64	163	1	51	315

2025 Dengue Cases Acquired in Florida: In 2025, 53 cases of locally acquired dengue have been reported in Brevard (35), Hillsborough, Miami-Dade (16), and Pasco counties with onset in February, May, June, July, August, September, and October. One case was reported in a non-Florida resident. Forty-one cases have been serotyped by PCR. Please see the table below for a breakdown of cases by county and serotype.

County of Exposure	DENV-1	DENV-2	DENV-3	DENV-4	Unknown	Total
Brevard			24		11	35
Hillsborough				1		1
Miami-Dade		3	2	10	1	16
Pasco	1					1
Total	1	3	26	11	12	53

2025 International Travel-Associated Malaria Cases: Forty cases with onset in 2025 have been reported in individuals with travel history to a malaria-endemic area. Counties reporting cases were: Alachua (2), Brevard, Broward (5), Collier, Duval, Hillsborough (3), Lake, Leon, Manatee, Marion (2), Miami-Dade (4), Nassau (2), Orange (4), Palm Beach (4), Pasco, Polk (2), Sarasota, St. Lucie (2), and Volusia (2). Eleven cases were reported in non-Florida residents. Please see the table below for a breakdown of cases by country of origin and *Plasmodium* species.

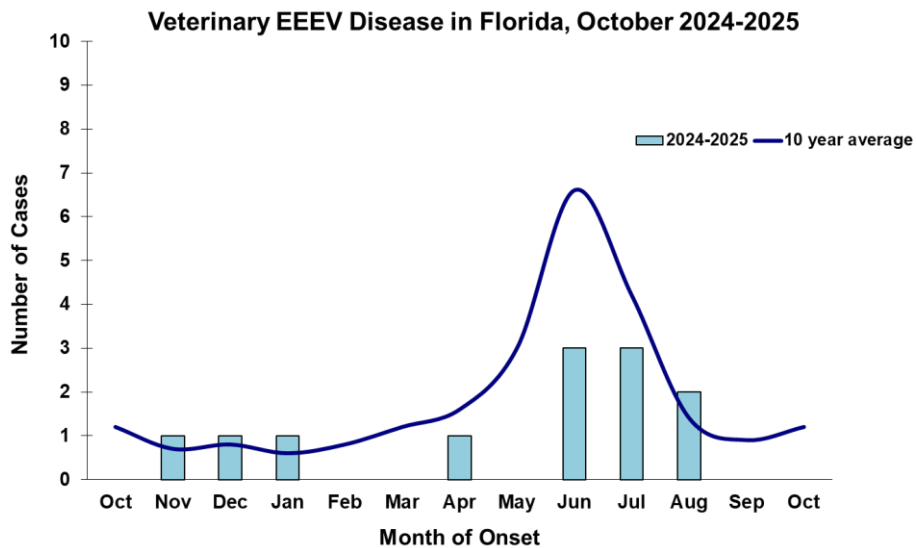
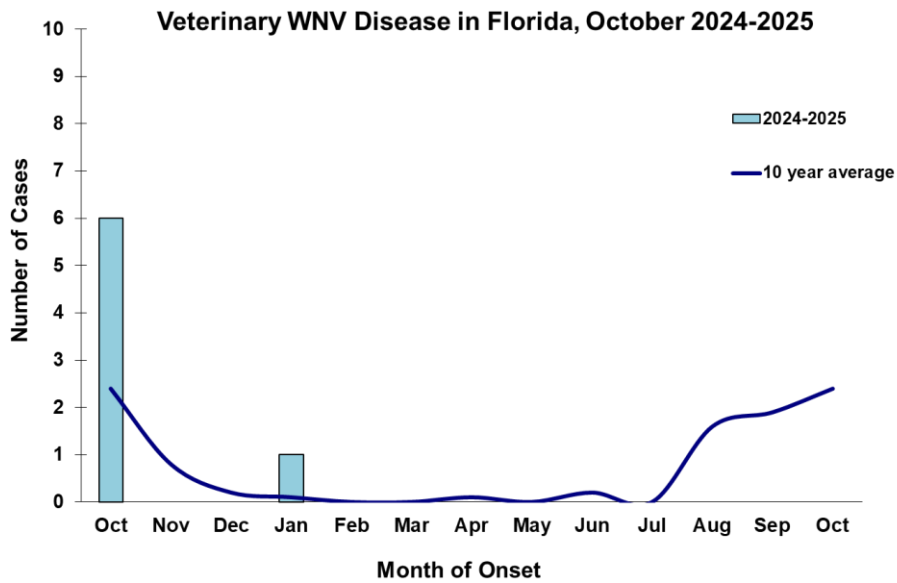
Country of Exposure	<i>Plasmodium falciparum</i>	<i>Plasmodium ovale</i>	<i>Plasmodium vivax</i>	Total
Africa	4			4
Angola	1			1
Cameroon	1			1
Central America			1	1
Central Africa	1			1
Central/South America			2	2
Côte D'Ivoire	1			1
Gambia	1			1
Ghana	1			1
Guinea	1			1
Haiti	1			1
Honduras			1	1
India			1	1
Liberia	2			2
Malawi	1			1
Nicaragua			1	1

Country of Exposure	<i>Plasmodium falciparum</i>	<i>Plasmodium ovale</i>	<i>Plasmodium vivax</i>	Total
Nigeria	13	1		14
Peru			1	1
Rwanda	1			1
Sierra Leone	1			1
Uganda	1			1
Uganda/Kenya	1			1
Total	32	1	7	40

Veterinary Cases**

**Veterinary cases are reported by date of onset. Only mammalian veterinary cases are included in the graphs.

No veterinary cases were reported this week.



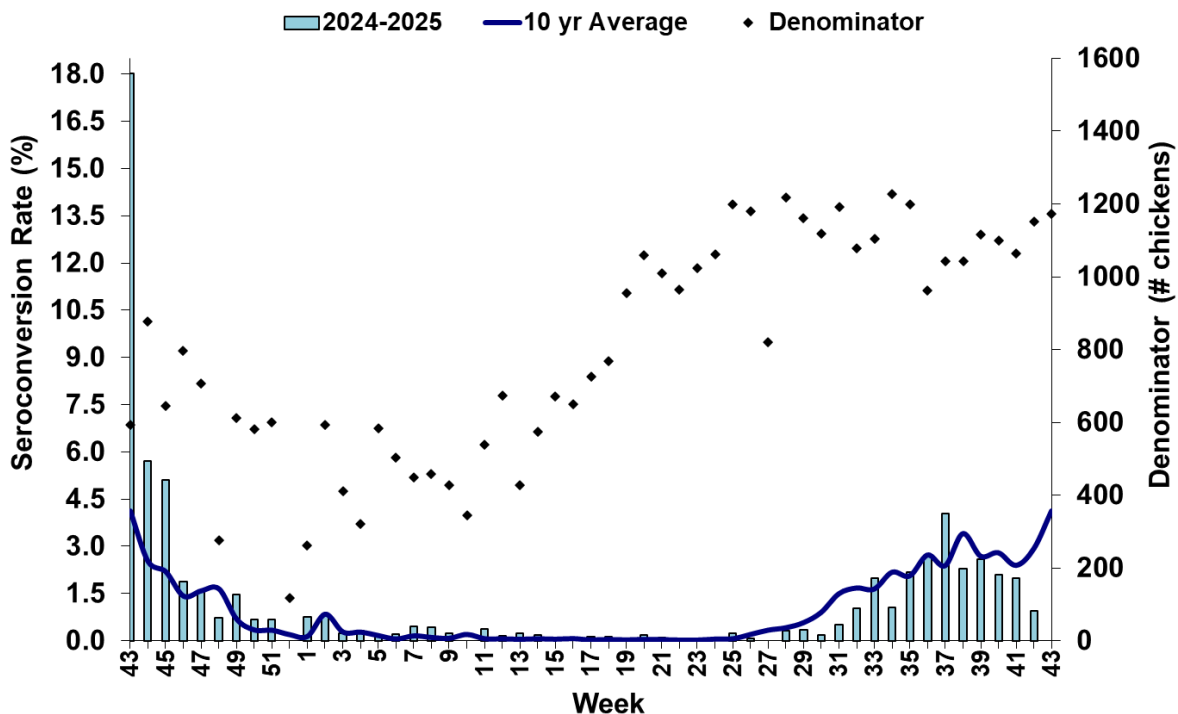
Sentinel Chickens

The table below is for the reporting of confirmatory laboratory results from this week. Some of the samples were collected at earlier dates. The date of collection is recorded for samples collected on that day along with the total number of positives and the corresponding seroconversion rate for the week the sample was collected.

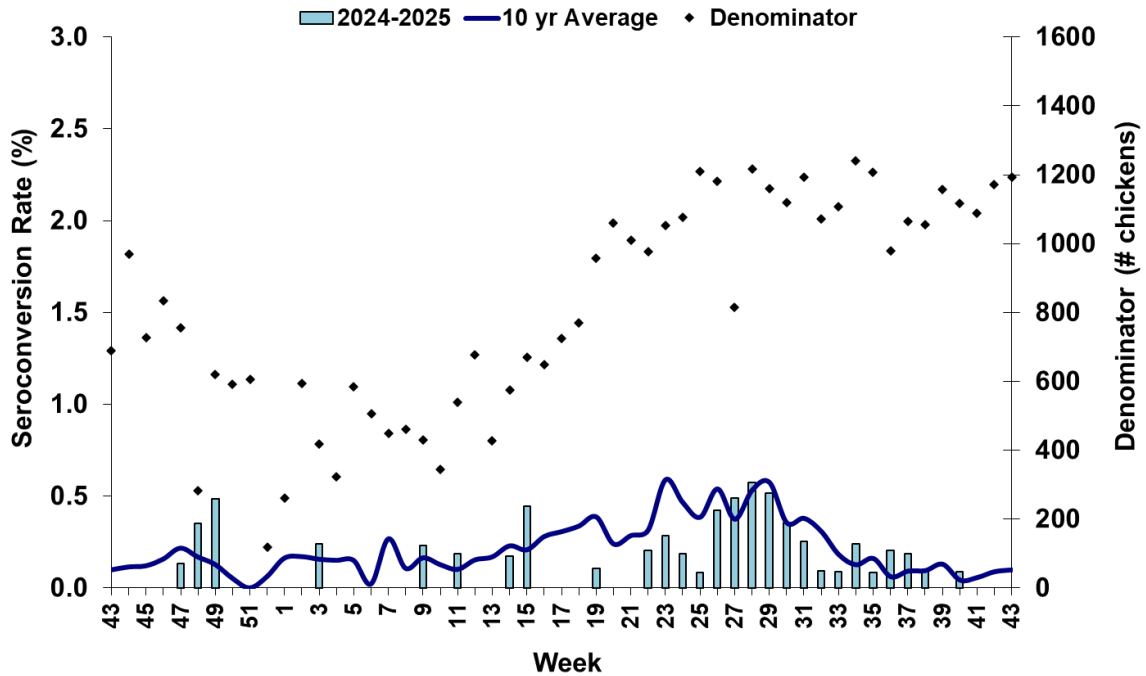
Fifteen sentinel chickens tested positive for antibodies to WNV in Bay, Citrus, Hillsborough, Martin, Orange, Pasco, St. Johns, Sumter, Volusia and Walton counties

County	Collection Date	Seroconversion Rates (%)						County Totals	
		Flavi	SLEV	WNV	Alpha	EEEV	HJV	Collection Week	YTD
Bay	10/13/2025	15.38		15.38				2 WNV	16 WNV
Citrus	10/14/2025	3.28		3.28				2 WNV	9 EEEV, 16 WNV
Hillsborough	10/13/2025	6.90		6.90				2 WNV	1 EEEV, 27 WNV
Martin	10/9/2025	2.50		2.50				1 WNV	4 WNV
Orange	10/13/2025	0.81		0.81				1 WNV	16 EEEV, 1, HJ, 13 WNV
Pasco	10/14/2025	1.92		1.92				1 WNV	1 EEEV, 22 WNV
St. Johns	10/7/2025	2.17		2.17				1 WNV	2 EEEV, 11 WNV
Sumter	10/7/2025	3.85		3.85				1 WNV	5 WNV
Volusia	10/13/2025	6.52		6.52				3 WNV	3 EEEV, 22 WNV
Walton	10/7/2025	2.13		2.13				1 WNV	11 EEEV, 3 HJ, 20 WNV

Sentinel Seroconversions to WNV in Florida, 2024–2025



Sentinel Seroconversions to EEEV in Florida, 2024–2025



Mosquito Pools

No mosquito pools tested positive for EEEV or WNV this week.

County	Collection Date	Result	Species	County YTD
--------	-----------------	--------	---------	------------

Dead Birds

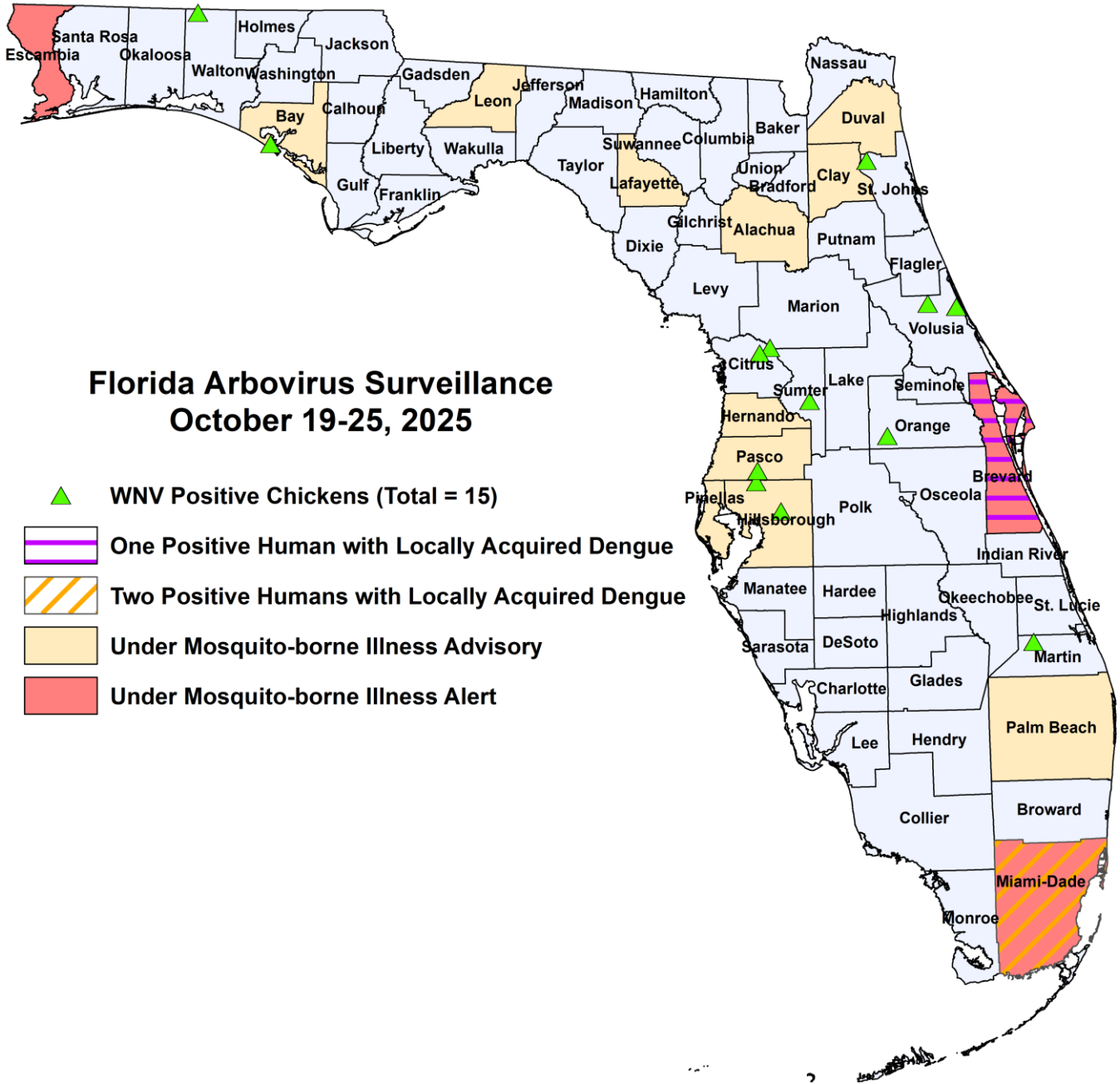
The Fish and Wildlife Conservation Commission (FWC) collects reports of dead birds, which can be an indication of arbovirus circulation in an area. This week, 12 reports representing a total of 27 dead birds, including one jay and one raptor were received from 9 counties.

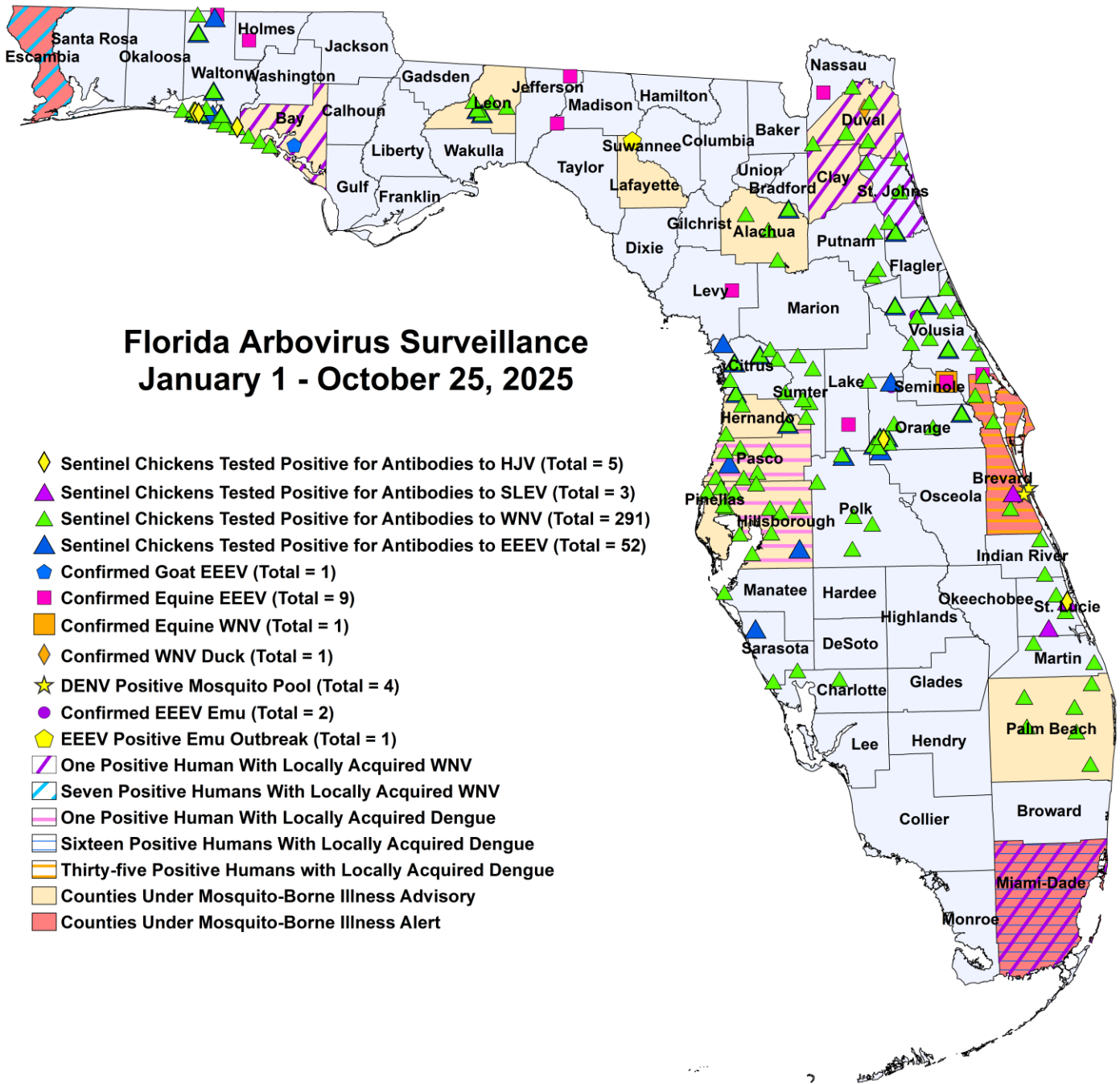
In 2025, 1211 reports representing a total of 2710 dead birds (100 crows, 47 jays, 261 raptors, 236 doves) were received from 58 of Florida’s 67 counties.

2025

County	Total Dead Birds	Crows	Jays	Raptors	Doves
Charlotte	1	0	0	0	0
Clay	1	0	0	0	0
Collier	4	0	0	0	0
Duval	1	0	0	0	0
Lake	1	6	0	1	0
Miami-Dade	4	0	0	0	0
Palm Beach	12	0	0	0	0
Pinellas	2	0	0	0	0
Polk	1	0	1	0	0

Maps





2025 Mosquito-Borne Disease Activity by County

County	Humans	Equines	Sentinel Chickens	Other
Alachua			2 EEEV (7/24), (7/31) 12 WNV (7/24), (7/31), (8/5), (9/4), (9/8), (9/16), (9/23)	
Bay	1 asymptomatic WNV blood donor (October)		16 WNV (3/24), (8/4), (9/8), (9/15), (9/22), (10/6), (10/13)	1 EEEV goat (7/23)
Brevard	35 dengue (May, July (10), August (20), September (3), October)	1 EEEV (7/18)	1 SLEV (7/9) 4 WNV (2/7), (7/18), (9/12), (10/1)	4 DENV-3 mosquito pools (<i>Ae. aegypti</i> 7/24, 8/6, 9/4)

County	Humans	Equines	Sentinel Chickens	Other
Citrus			9 EEEV (3/11), (4/1), (4/8), (5/28), (6/24), (7/7), (7/9), (9/30) 16 WNV (1/6), (2/10), (2/17), (8/12), (9/3), (9/9), (9/23), (9/30), (10/7), (10/14)	
Duval	1 WNV (August)		15 WNV (8/12), (8/18), (8/25), (9/2), (9/23), (9/29)	1 WNV duck (8/5)
Charlotte			2 WNV (7/18), (10/3)	
Clay	1 WNV (July)			
Escambia	3 WNV (August (3)) 4 asymptomatic WNV blood donors (June (2), July, August)			
Hernando			1 EEEV (7/21) 6 WNV (9/29), (10/6)	
Hillsborough	1 dengue (July)		1 EEEV (7/14) 27 WNV (4/21), (8/11), (8/18), (8/25), (9/2), (9/8), (9/11), (9/22), (9/30), (10/13)	
Holmes		1 EEEV (8/19)		
Indian River			2 WNV (1/2)	
Jefferson		1 EEEV (6/12)		
Lafayette				1 EEEV emu flock outbreak (7/6 for the first emu)
Lake		1 EEEV (4/2)		
Leon			3 EEEV (7/22), (8/13), (9/17) 9 WNV (7/22), (8/5), (8/13), (9/2), (9/9), (9/17)	
Levy		1 EEEV (6/20)		
Madison		1 EEEV (6/30)		
Manatee			1 WNV (9/16)	
Martin			4 WNV (9/11), (9/18), (9/25), (10/9)	
Nassau		1 EEEV (7/21)		
Miami-Dade	16 dengue (February, June, August (8), September (5), October) 1 asymptomatic WNV blood donor (July)			
Orange			16 EEEV (2/24), (4/7), (6/2), (6/9), (6/16), (6/23), (6/30), (7/14), (7/21), (7/28), (8/4), (8/18), (8/25), (9/2) 1 HJV (7/14) 13 WNV (3/31), (8/4), (8/25), (9/2), (9/9), (9/15), (10/6), (10/13)	1 EEEV emu (1/1)
Palm Beach			31 WNV (1/7), (1/21), (1/27), (2/10), (2/17), (2/24), (3/10), (3/17), (4/29), (5/13), (6/16), (8/12), (9/8), (9/9), (9/23), (10/6)	
Pasco	1 dengue (July)		1 EEEV (7/7) 22 WNV (1/13), (8/18), (9/2), (9/8), (9/15), (9/22), (9/30), (10/6), (10/14)	

County	Humans	Equines	Sentinel Chickens	Other
Pinellas			25 WNV (1/6), (7/7), (8/4), (8/11), (8/18), (8/25), (9/2), (9/8), (9/15), (9/23), (9/29)	
Polk			2 EEEV (6/2), (6/9) 12 WNV (6/16), (8/29), (9/2), (9/5), (9/12), (9/19), (9/26), (9/29), (10/3), (10/6)	
Putnam			9 WNV (7/28), (8/11), (8/25), (9/8), (9/22)	
Sarasota			1 EEEV (7/8) 3 WNV (8/22), (8/29)	
Seminole		1 EEEV (1/5) 1 WNV (1/5)		
St. Johns	1 asymptomatic WNV blood donor (June)		2 EEEV (9/3), (9/8) 11 WNV (8/25), (9/3), (9/8), (9/15), (9/22), (10/7)	
St. Lucie			1 HJV (7/11) 2 SLEV (7/10), (8/20) 3 WNV (8/21), (9/24), (10/1)	
Sumter			6 WNV (8/25), (9/8), (9/23), (9/30), (10/7)	
Volusia			3 EEEV (1/14), (4/8), (7/28) 22 WNV (6/23), (7/7), (7/28), (8/11), (8/25), (9/2), (9/8), (9/15), (9/22), (9/29), (10/13)	1 EEEV emu (1/2)
Walton		1 EEEV (8/1)	11 EEEV (5/5), (6/2), (6/23), (6/30), (7/7), (7/14), (8/19) 3 HJV (6/23), (7/14) 20 WNV (5/19), (7/14), (8/4), (8/11), (8/25), (9/2), (9/9), (9/15), (9/16), (9/29), (10/6), (10/7)	

Acknowledgements and Data Sources

Contributors: Andrea Morrison, PhD, MSPH, Rebecca Zimler, PhD, MPH, Olga Ospina, MPH, and Danielle Stanek, DVM, DOH Bureau of Epidemiology; Lea Heberlein, DrPH; Peter Dumoulin, PhD, Maribel Castaneda, and Amanda Davis, BS; DOH Bureau of Public Health Laboratories.

For more surveillance information, please see the DOH website at: www.floridahealth.gov/diseases-and-conditions/mosquito-borne-diseases/surveillance.html

For arbovirus surveillance information for the United States, please see the Centers for Disease Control and Prevention website at: www.cdc.gov/ncidod/dvbid/westnile/surv&control.htm

Case tallies included in the weekly Florida arbovirus surveillance report include confirmed and probable cases for EEE, WNV infection, SLE, dengue, chikungunya, and malaria by date of onset. Suspect cases are not included. Activity is mapped by county of exposure rather than county of residence. Case definitions being used in Florida are consistent with national criteria provided by the Council of State and Territorial Epidemiologists (CSTE) and may be viewed at: www.floridahealth.gov/diseases-and-conditions/disease-reporting-and-management/disease-reporting-and-surveillance/index.html. Case tallies reported by CDC do not include suspect cases and cases are reported by patient state of residence rather than where the exposure occurred. Data is provided by county health departments, Department of Health Bureau of Public Health Laboratories, Department of Agriculture and Consumer Services, mosquito control agencies, Florida Fish and Wildlife Conservation Commission, medical providers and veterinarians. Equine cases are provided by the Department of Agriculture and Consumer Services.