



## Florida Arbovirus Surveillance Week 29: July 13-19, 2025

Arbovirus surveillance in Florida includes endemic mosquito-borne viruses such as West Nile virus (WNV), Eastern equine encephalitis virus (EEEV), and St. Louis encephalitis virus (SLEV), as well as exotic viruses such as dengue virus (DENV), chikungunya virus (CHIKV), Zika virus (ZIKV), and California encephalitis group viruses (CEV). Malaria, a parasitic mosquito-borne disease is also included. During the period of July 13-19, 2025, the following arboviral activity was recorded in Florida.

**WNV activity:** No human cases of WNV infection were reported this week. No horses with WNV infection were reported this week. Two sentinel chickens tested positive for antibodies to WNV in Pinellas and Volusia counties. In 2025, positive samples from four asymptomatic blood donors, one horse, and 32 sentinel chickens have been reported from 15 counties.

**SLEV activity:** No human cases of SLEV infection were reported this week. No sentinel chickens tested positive for antibodies to SLEV this week. In 2025, no cases of SLEV have been reported.

**EEEV activity:** No human cases of EEEV infection were reported this week. No horses with EEEV infection were reported this week. Five sentinel chickens tested positive for antibodies to EEEV in Citrus, Pasco, and Walton counties. One emu flock tested positive for antibodies to EEEV in Lafayette County. In 2025, positive samples from five horses, two emus, one emu flock, and 28 sentinel chickens have been reported from 12 counties.

**International Travel-Associated Dengue:** Five cases of dengue were reported this week in persons that had international travel. In 2025, 110 travel-associated dengue cases have been reported.

**Dengue Cases Acquired in Florida:** No cases of locally acquired dengue were reported this week. In 2025, three cases of locally acquired dengue have been reported from two counties.

**International Travel-Associated Chikungunya Fever Cases:** No cases of chikungunya fever were reported this week in persons that had international travel. In 2025, four cases of travel-associated chikungunya fever have been reported.

**Chikungunya Fever Cases Acquired in Florida:** No cases of locally acquired chikungunya fever were reported this week. In 2025, no cases of locally acquired chikungunya fever have been reported.

**International Travel-Associated Oropouche Fever cases:** No cases of Oropouche fever were reported this week in persons that had international travel. In 2025, no cases of travel-associated Oropouche fever have been reported.

**International Travel-Associated Zika Fever Cases:** No cases of Zika fever were reported this week in persons that had international travel. In 2025, no travel-associated Zika fever cases have been reported.

**Zika Fever Cases Acquired in Florida:** No cases of locally acquired Zika fever were reported this week. In 2025, no cases of locally acquired Zika fever have been reported.

**Advisories/Alerts:** Brevard, Lafayette, and St. Johns counties are currently under a mosquito-borne illness advisory. Escambia and Miami-Dade counties are currently under a mosquito-borne illness alert. No other counties are currently under a mosquito-borne illness advisory or alert.

There are currently multiple travel health notices from the Centers for Disease Control and Prevention related to mosquito-borne diseases.

Dengue			Oropouche	Yellow Fever	Chikungunya		Malaria
Africa and the Middle East	Americas	Asia and the Pacific Islands	Americas	Americas	Africa	Americas	Africa
Comoros	Colombia	Austral Islands	Brazil (Espirito Santo)	Bolivia	Kenya	Bolivia (Santa Cruz)	Ethiopia
Samoa	Ecuador	Bangladesh	Brazil	Brazil	Madagascar		
Sudan	Guatemala	Cook Islands, NZ	Colombia	Colombia	Mauritius		
	Panama	Fiji	Cuba	Peru	Mayotte		
		French Polynesia	Panama (Darién)		Réunion		
		Kiribati	Panama		Somalia		
		Marquesas Islands	Peru		Sri Lanka		
		Mali					
		Philippines					
		Tonga					
Tuvalu							

Level 1 Travel Health Notice, Level 2 Travel Health Alert: [wwwnc.cdc.gov/travel/notices](http://wwwnc.cdc.gov/travel/notices).  
 For a map of arboviral disease activity in the United States visit: <https://www.cdc.gov/fight-the-bite/at-risk/index.html>.

2025 Human Case Summary

**West Nile Virus Illness Acquired in Florida:** In 2025, four asymptomatic blood donors have been reported in Escambia (June, July) and St. Johns (June) counties.

**2025 International Travel-Associated Chikungunya Cases:** Four cases with onset in 2025 have been reported in individuals with travel history to a chikungunya-endemic area in the two weeks prior to onset. Counties reporting cases were: Broward (2), Lake, and Miami-Dade. Countries of origin were: Bolivia, Brazil, Indonesia, and Sri Lanka.

**2025 International Travel-Associated Dengue Cases:** One hundred ten cases with onset in 2025 have been reported in individuals with travel history to a dengue-endemic area in the two weeks prior to onset. Counties reporting cases were: Bay, Brevard (2), Broward (10), Clay, Collier (2), Duval (2), Escambia, Hillsborough (6), Lake (2), Lee (4), Manatee, Marion, Miami-Dade (54), Okeechobee (3), Orange (6), Osceola (2), Palm Beach (5), Pasco, Pinellas (2), Polk, St. Johns, St. Lucie, and Volusia. Five cases were reported in non-Florida residents. In 2025, 90 cases of dengue reported in Florida have been serotyped by PCR. Please see the table below for a breakdown of cases by country of origin and serotype.

Country of Exposure	DENV-1	DENV-2	DENV-3	DENV-4	Unknown	Total
Antigua and Barbuda			1			1
Argentina	2					2
Bahamas			1			1
Bonaire			1			1
Brazil	1	4	1		3	9
Colombia	1	1	1			3
Cuba		1	3	40	9	53
Ecuador			3			3
El Salvador			1			1
French Polynesia					1	1
Guatemala			2			2
Guyana		2			1	3
Mexico			7			7
Nicaragua			3		1	4
Peru			1			1

Country of Exposure	DENV-1	DENV-2	DENV-3	DENV-4	Unknown	Total
Philippines					1	1
Puerto Rico			8		1	9
Sri Lanka					1	1
St. Barts			3			3
St. Barts/St. Martin			1			1
US Virgin Islands		1			2	3
<b>Total</b>	<b>4</b>	<b>9</b>	<b>37</b>	<b>40</b>	<b>20</b>	<b>110</b>

**2025 Dengue Cases Acquired in Florida:** In 2025, three cases of locally acquired dengue have been reported in Brevard and Miami-Dade (2) counties with onset in February, May, and June. Three cases have been serotyped by PCR. Please see the table below for a breakdown of cases by county and serotype.

County of Exposure	DENV-3	DENV-4	Total
Miami-Dade	1	1	2
Brevard	1		1
<b>Total</b>	<b>2</b>	<b>1</b>	<b>3</b>

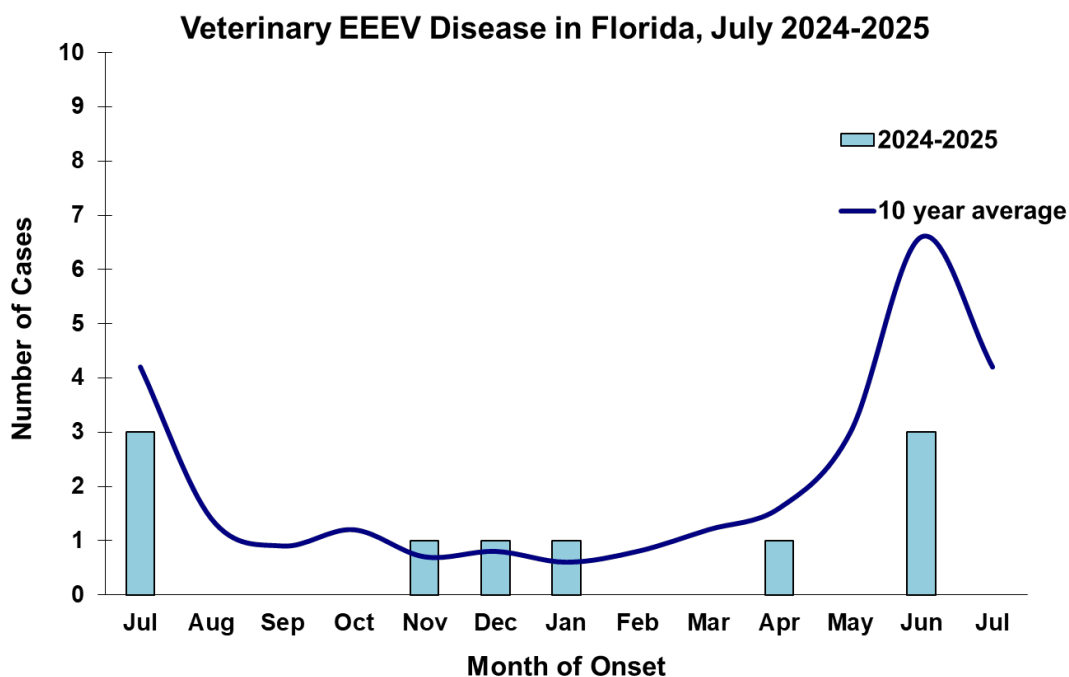
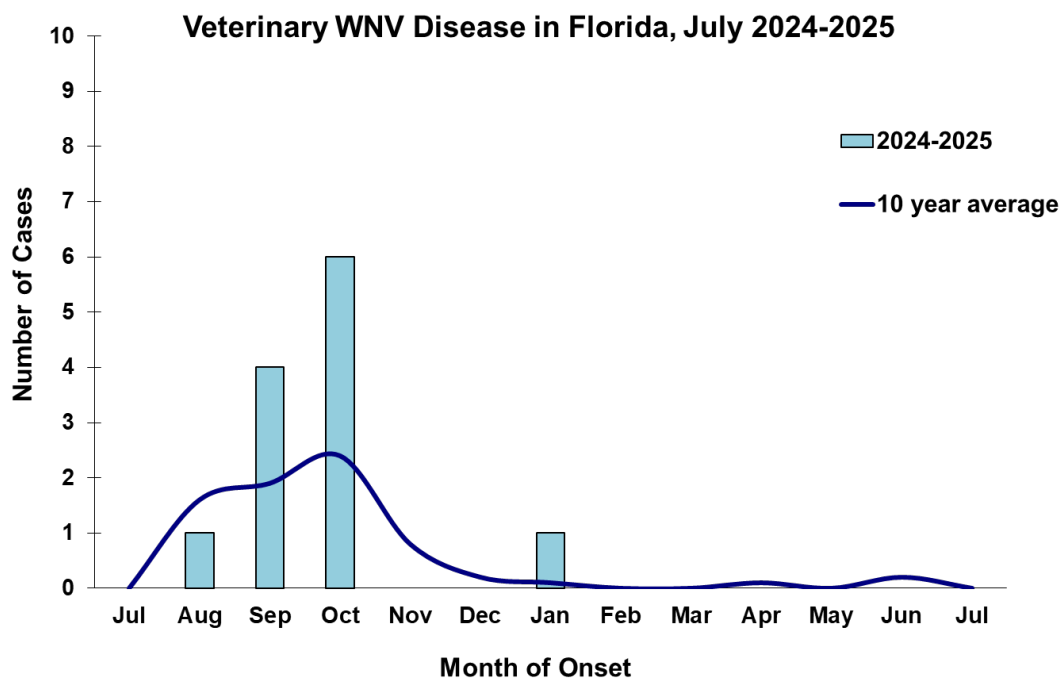
**2025 International Travel-Associated Malaria Cases:** Twenty-three cases with onset in 2025 have been reported in individuals with travel history to a malaria-endemic area. Counties reporting cases were: Alachua, Brevard, Broward (3), Collier, Duval, Hillsborough, Lake, Marion, Miami-Dade (4), Nassau, Orange (2), Palm Beach (2), Polk (2), and St. Lucie (2). Seven cases were reported in non-Florida residents. Please see the table below for a breakdown of cases by country of origin and *Plasmodium* species.

Country of Exposure	<i>Plasmodium falciparum</i>	<i>Plasmodium vivax</i>	Total
Africa	2		2
Angola	1		1
Cameroon	1		1
Central America		1	1
Central/South America		2	2
Côte D'Ivoire	1		1
Gambia	1		1
Guinea	1		1
Haiti	1		1
Honduras		1	1
India		1	1
Malawi	1		1
Nigeria	6		6
Rwanda	1		1
Siera Leone	1		1
Uganda	1		1
<b>Total</b>	<b>18</b>	<b>5</b>	<b>23</b>

## Veterinary Cases\*\*

\*\*Veterinary cases are reported by date of onset. Only mammalian veterinary cases are included in the graphs.

No veterinary cases were reported this week.



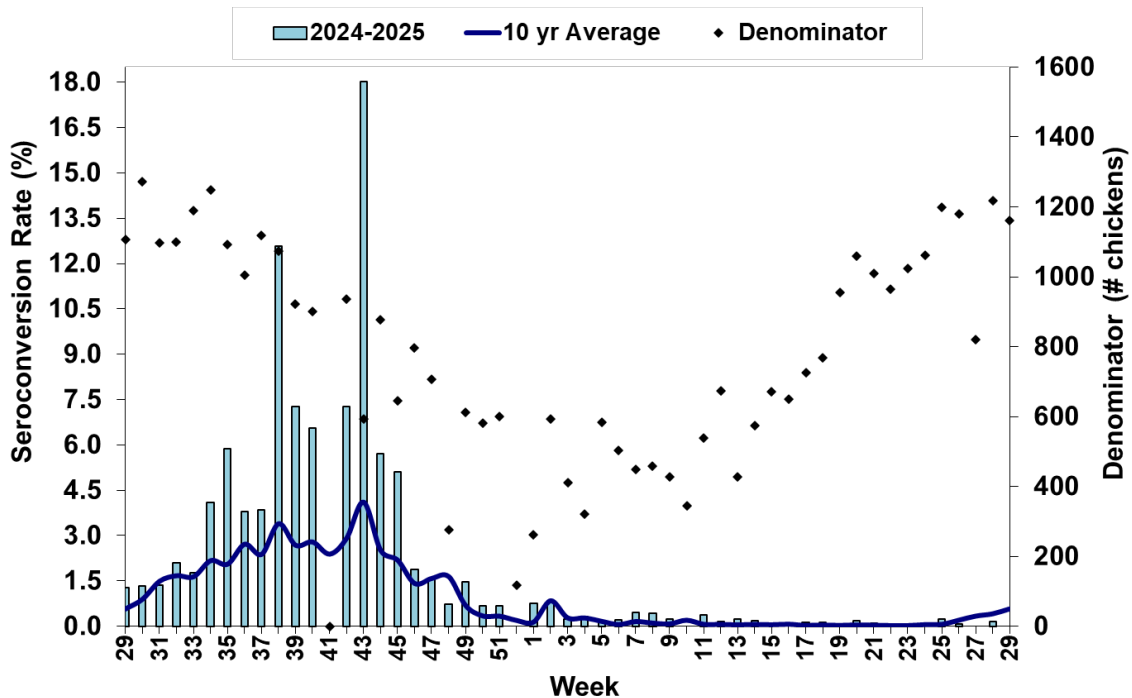
## Sentinel Chickens

The table below is for the reporting of confirmatory laboratory results from this week. Some of the samples were collected at earlier dates. The date of collection is recorded for samples collected on that day along with the total number of positives and the corresponding seroconversion rate for the week the sample was collected.

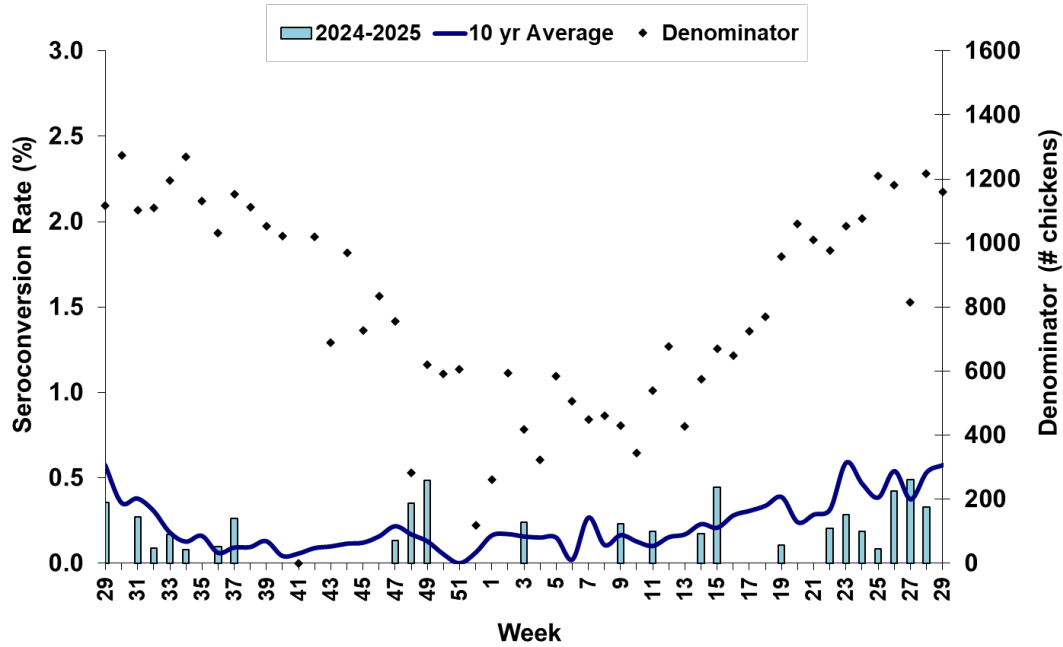
Two sentinel chickens tested positive for antibodies to WNV this week in Pinellas and Volusia counties. Five sentinel chickens tested positive for antibodies to EEEV this week in Citrus, Pasco, and Walton counties.

County	Collection Date	Seroconversion Rates (%)						County Totals	
		Flavi	SLEV	WNV	Alpha	EEEV	HJV	Collection Week	YTD
Citrus	6/24/2025				1.52	1.52		1 EEEV	7 EEEV, 4 WNV
	7/7/2025				1.64	1.64		1 EEEV	
Pasco	7/7/2025				1.69	1.69		1 EEEV	1 EEEV, 1 WNV
Pinellas	7/7/2025	1.79		1.79				1 WNV	2 WNV
Volusia	7/7/2025	5.00		5.00				1 WNV	2 EEEV, 2 WNV
Walton	6/23/2025				1.01		1.01	1 HJV	8 EEEV, 1 HJV, 1 WNV
	7/7/2025				2.11	2.11		2 EEEV	

**Sentinel Seroconversions to WNV in Florida, 2024–2025**



### Sentinel Seroconversions to EEEV in Florida, 2024–2025



### Mosquito Pools

No mosquito pools tested positive for EEEV or WNV this week.

County	Collection Date	Result	Species	County YTD
--------	-----------------	--------	---------	------------

### Dead Birds

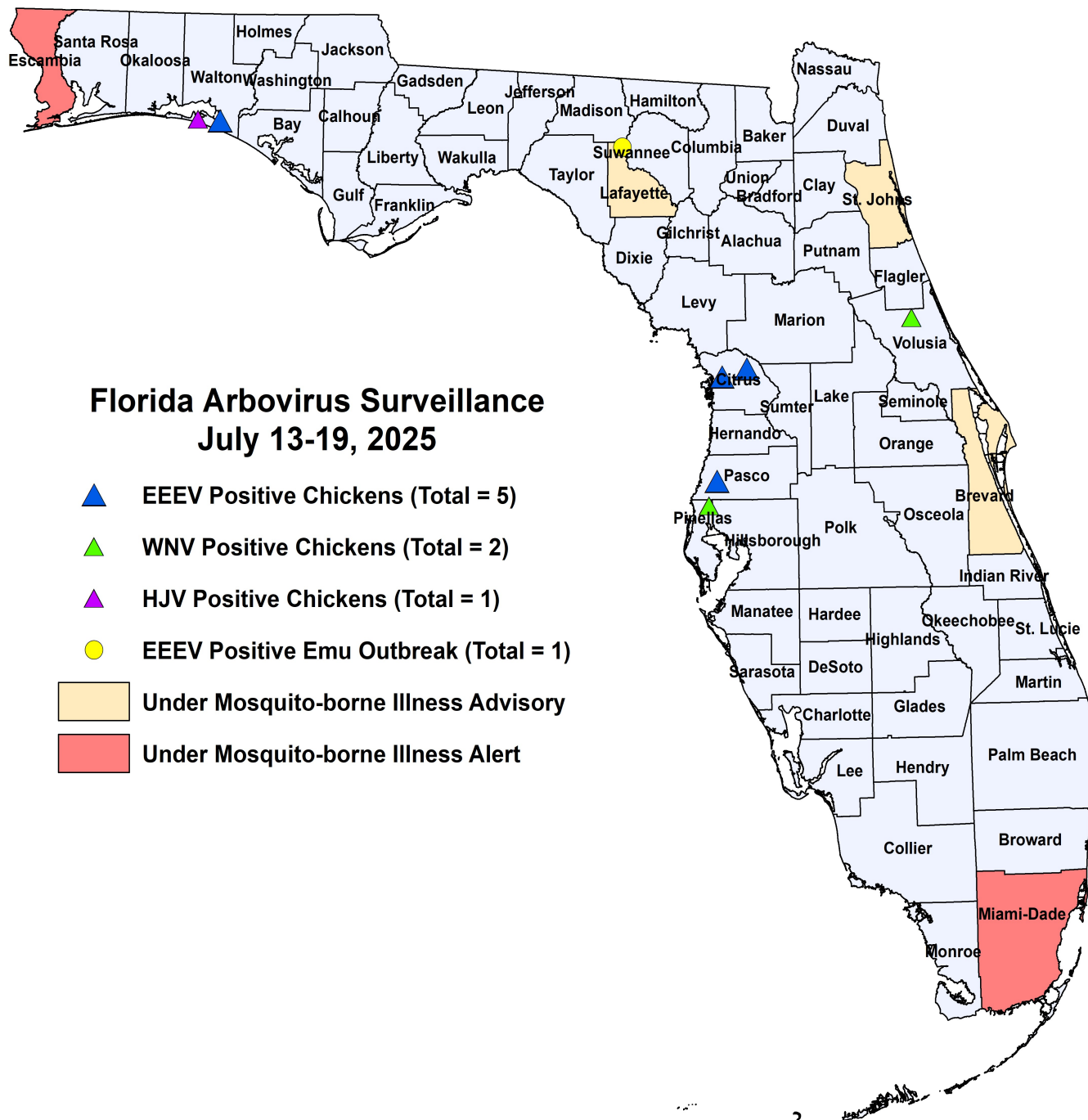
The Fish and Wildlife Conservation Commission (FWC) collects reports of dead birds, which can be an indication of arbovirus circulation in an area.

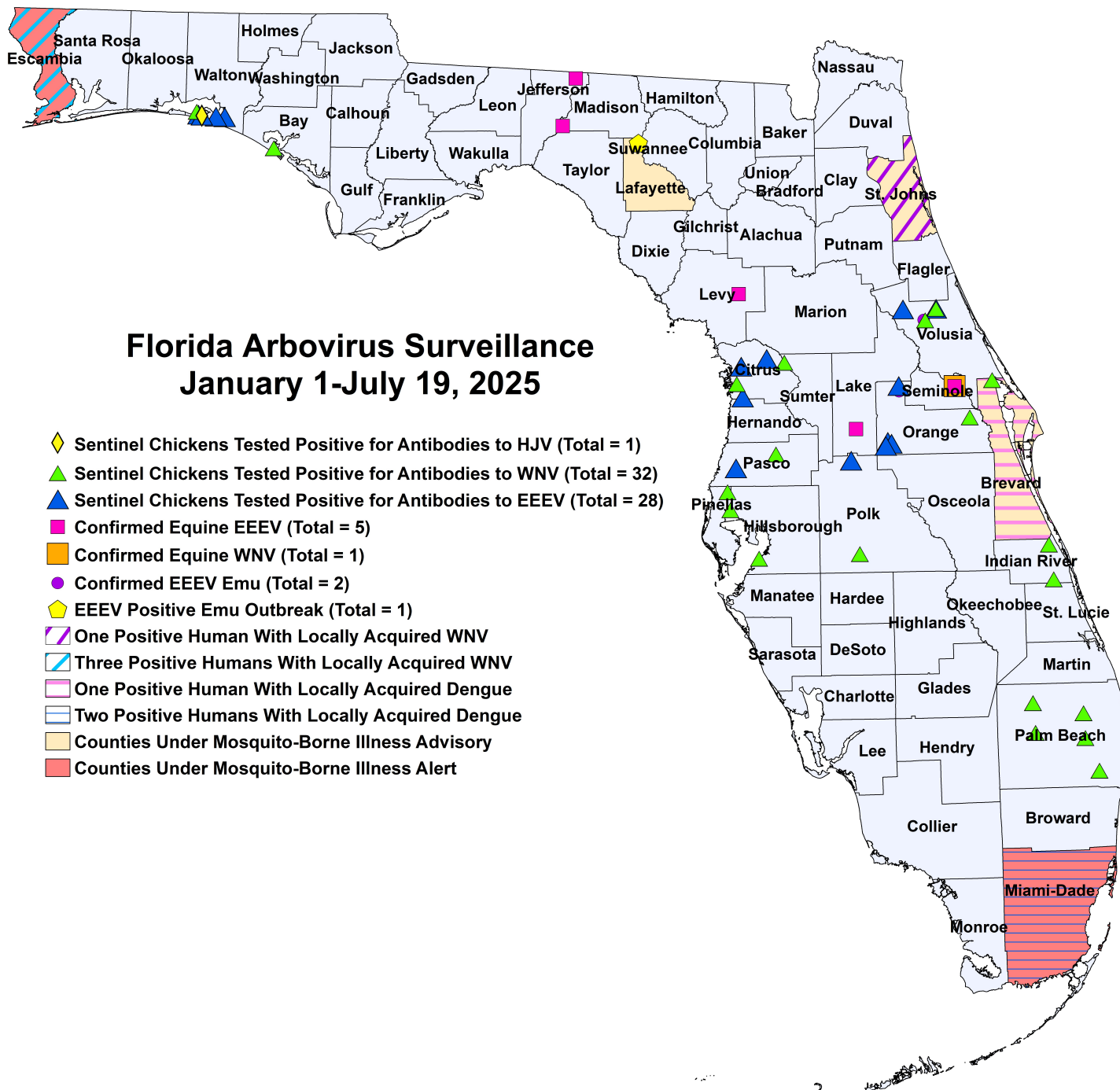
Due to technical difficulties dead bird reports were unavailable this week and will be updated when available.

In 2025, 992 reports representing a total of 2041 dead birds (68 crows, 41 jays, 233 raptors, 136 doves) were received from 58 of Florida's 67 counties.

2025

County	Total Dead Birds	Crows	Jays	Raptors	Doves
--------	------------------	-------	------	---------	-------







## 2025 Mosquito-Borne Disease Activity by County

County	Humans	Equines	Sentinel Chickens	Other
Bay			1 WNV (3/24)	
Brevard	1 dengue (May)		1 WNV (2/7)	
Citrus			7 EEEV (3/11), (4/1), (4/8), (5/28), (6/24), (7/7) 4 WNV (1/6), (2/10), (2/17)	
Escambia	3 asymptomatic WNV blood donors (June (2), July)			
Hillsborough			1 WNV (4/21)	
Indian River			2 WNV (1/2)	
Jefferson		1 EEEV (6/12)		
Lafayette				1 EEEV emu flock outbreak (7/6 for the first emu)
Lake		1 EEEV (4/2)		
Levy		1 EEEV (6/20)		
Madison		1 EEEV (6/30)		
Miami-Dade	2 dengue (February, June)			
Orange			8 EEEV (2/24), (4/7), (6/2), (6/9), (6/16), (6/23), (6/30) 1 WNV (3/31)	1 EEEV emu (1/1)
Palm Beach			15 WNV (1/7), (1/21), (1/27), (2/10), (2/17), (2/24), (3/10), (3/17), (4/29), (5/13), (6/16)	
Pasco			1 EEEV (7/7) 1 WNV (1/13)	
Pinellas			2 WNV (1/6), (7/7)	
Polk			2 EEEV (6/2), (6/9) 1 WNV (6/16)	
Seminole		1 EEEV (1/5) 1 WNV (1/5)		
St. Johns	1 asymptomatic WNV blood donor (June)			
Volusia			2 EEEV (1/14), (4/8) 2 WNV (6/23), (7/7)	1 EEEV emu (1/2)
Walton			8 EEEV (5/5), (6/2), (6/23), (6/30), (7/7) 1 HJV (6/23) 1 WNV (5/19)	

## Acknowledgements and Data Sources

Contributors: Andrea Morrison, PhD, MSPH, Rebecca Zimler, PhD, MPH, Olga Ospina, MPH, and Danielle Stanek, DVM, DOH Bureau of Epidemiology; Lea Heberlein, DrPH; Peter Dumoulin, PhD, Maribel Castaneda, and Amanda Davis, BS; DOH Bureau of Public Health Laboratories.

For more surveillance information, please see the DOH website at: [www.floridahealth.gov/diseases-and-conditions/mosquito-borne-diseases/surveillance.html](http://www.floridahealth.gov/diseases-and-conditions/mosquito-borne-diseases/surveillance.html)

**For arbovirus surveillance information for the United States, please see the Centers for Disease Control and Prevention website at: [www.cdc.gov/ncidod/dvbid/westnile/surv&control.htm](http://www.cdc.gov/ncidod/dvbid/westnile/surv&control.htm)**

Case tallies included in the weekly Florida arbovirus surveillance report include confirmed and probable cases for EEE, WNV infection, SLE, dengue, chikungunya, and malaria by date of onset. Suspect cases are not included. Activity is mapped by county of exposure rather than county of residence. Case definitions being used in Florida are consistent with national criteria provided by the Council of State and Territorial Epidemiologists (CSTE) and may be viewed at: [www.floridahealth.gov/diseases-and-conditions/disease-reporting-and-management/disease-reporting-and-surveillance/index.html](http://www.floridahealth.gov/diseases-and-conditions/disease-reporting-and-management/disease-reporting-and-surveillance/index.html). Case tallies reported by CDC do not include suspect cases and cases are reported by patient state of residence rather than where the exposure occurred. Data is provided by county health departments, Department of Health Bureau of Public Health Laboratories, Department of Agriculture and Consumer Services, mosquito control agencies, Florida Fish and Wildlife Conservation Commission, medical providers and veterinarians. Equine cases are provided by the Department of Agriculture and Consumer Services.