



Florida Arbovirus Surveillance

Week 26: June 22-28, 2025

Arbovirus surveillance in Florida includes endemic mosquito-borne viruses such as West Nile virus (WNV), Eastern equine encephalitis virus (EEEV), and St. Louis encephalitis virus (SLEV), as well as exotic viruses such as dengue virus (DENV), chikungunya virus (CHIKV), Zika virus (ZIKV), and California encephalitis group viruses (CEV). Malaria, a parasitic mosquito-borne disease is also included. During the period of June 22-28, 2025, the following arboviral activity was recorded in Florida.

WNV activity: No human cases of WNV infection were reported this week. No horses with WNV infection were reported this week. Three sentinel chickens tested positive for antibodies to WNV this week in Palm Beach and Polk counties. In 2025, positive samples from one asymptomatic blood donor, one horse, and 29 sentinel chickens have been reported from 13 counties.

SLEV activity: No human cases of SLEV infection were reported this week. No sentinel chickens tested positive for antibodies to SLEV this week. In 2025, no cases of SLEV have been reported.

EEEV activity: No human cases of EEEV infection were reported this week. Two horses with EEEV infection were reported this week in Jefferson and Levy counties. One sentinel chicken tested positive for antibodies to EEEV this week in Orange County. In 2025, positive samples from four horses, two emus, and 16 sentinel chickens have been reported from nine counties.

International Travel-Associated Dengue: Eleven cases of dengue were reported this week in persons that had international travel. In 2025, 98 travel-associated dengue cases have been reported.

Dengue Cases Acquired in Florida: One case of locally acquired dengue were reported this week. In 2025, two cases of locally acquired dengue have been reported from one county.

International Travel-Associated Chikungunya Fever Cases: No cases of chikungunya fever were reported this week in persons that had international travel. In 2025, four cases of travel-associated chikungunya fever have been reported.

Chikungunya Fever Cases Acquired in Florida: No cases of locally acquired chikungunya fever were reported this week. In 2025, no cases of locally acquired chikungunya fever have been reported.

International Travel-Associated Oropouche Fever cases: No cases of Oropouche fever were reported this week in persons that had international travel. In 2025, no cases of travel-associated Oropouche fever have been reported.

International Travel-Associated Zika Fever Cases: No cases of Zika fever were reported this week in persons that had international travel. In 2025, no travel-associated Zika fever cases have been reported.

Zika Fever Cases Acquired in Florida: No cases of locally acquired Zika fever were reported this week. In 2025, no cases of locally acquired Zika fever have been reported.

Advisories/Alerts: St. Johns County is currently under a mosquito-borne illness advisory. Miami-Dade County is currently under a mosquito-borne illness alert. No other counties are currently under a mosquito-borne illness advisory or alert.

There are currently multiple travel health notices from the Centers for Disease Control and Prevention related to mosquito-borne diseases.

Dengue			Oropouche	Yellow Fever	Chikungunya		Malaria
Africa and the Middle East	Americas	Asia and the Pacific Islands	Americas	Americas	Africa	Americas	Africa
Comoros	Brazil	Austral Islands	Barbados	Bolivia	Kenya	Bolivia	Ethiopia
Iran	Colombia	Fiji	Bolivia	Brazil	Madagascar		
Pakistan	Cuba	French Polynesia	Brazil (Espirito Santo)	Colombia	Mauritius		
Samoa	Ecuador	Marquesas Islands	Brazil	Peru	Mayotte		
Sudan	Guadeloupe	Moorea	Colombia		Réunion		
	Guatemala	Philippines	Cuba		Somalia		
	Mexico	Tonga	Ecuador		Sri Lanka		
	Panama		Guyana				
	Saint Lucia		Panama (Darién)				
			Panama				
			Peru				
			Venezuela				

Level 1 Travel Health Notice, Level 2 Travel Health Alert: wwwnc.cdc.gov/travel/notices.
 For a map of arboviral disease activity in the United States visit: <https://www.cdc.gov/fight-the-bite/at-risk/index.html>.

2025 Human Case Summary

West Nile Virus Illness Acquired in Florida: In 2025, one asymptomatic blood donor has been reported in St. Johns County (June).

2025 International Travel-Associated Chikungunya Cases: Four cases with onset in 2025 have been reported in individuals with travel history to a chikungunya-endemic area in the two weeks prior to onset. Counties reporting cases were: Broward (2), Lake, and Miami-Dade. Countries of origin were: Bolivia, Brazil, Indonesia, and Sri Lanka.

2025 International Travel-Associated Dengue Cases: Ninety-eight cases with onset in 2025 have been reported in individuals with travel history to a dengue-endemic area in the two weeks prior to onset. Counties reporting cases were: Bay, Broward (10), Clay, Collier (2), Duval (2), Escambia, Hillsborough (5), Lake (3), Lee (2), Manatee, Marion, Miami-Dade (47), Okeechobee (3), Orange (6), Osceola (2), Palm Beach (5), Pasco, Pinellas, Polk, St. Johns, St. Lucie, and Volusia. Five cases were reported in non-Florida residents. In 2025, 81 cases of dengue reported in Florida have been serotyped by PCR. Please see the table below for a breakdown of cases by country of origin and serotype.

Country of Exposure	DENV-1	DENV-2	DENV-3	DENV-4	Unknown	Total
Antigua and Barbuda			1			1
Argentina	2					2
Bonaire			1			1
Brazil	1	4	1		3	9
Colombia	1	1	1			3
Cuba		1	3	34	7	45
Ecuador			2			2
El Salvador			1			1
French Polynesia					1	1
Guatemala			2			2
Guyana		1			1	2
Mexico			7			7
Nicaragua			3		1	4
Peru			1			1
Philippines					1	1

Country of Exposure	DENV-1	DENV-2	DENV-3	DENV-4	Unknown	Total
Puerto Rico			8		1	9
St. Barts			3			3
St. Barts/St. Martin			1			1
US Virgin Islands		1			2	3
Total	4	8	35	34	17	98

2025 Dengue Cases Acquired in Florida: In 2025, two cases of locally acquired dengue have been reported in Miami-Dade County (2) with onset in February and June. Two cases have been serotyped by PCR. Please see the table below for a breakdown of cases by county and serotype.

County of Exposure	DENV-3	DENV-4	Total
Miami-Dade	1	1	2
Total	1	1	2

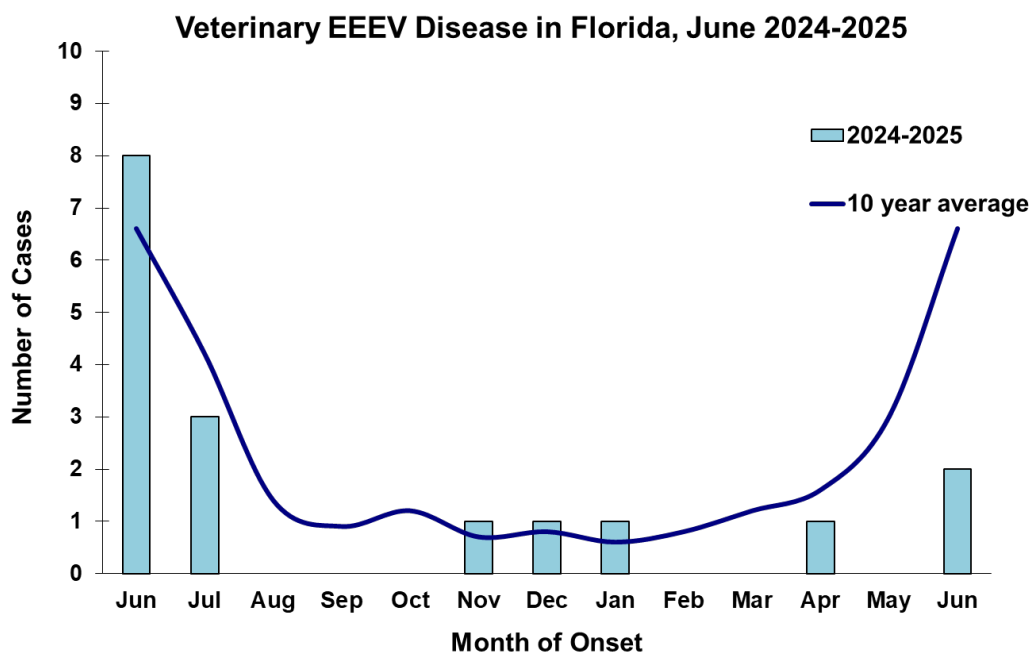
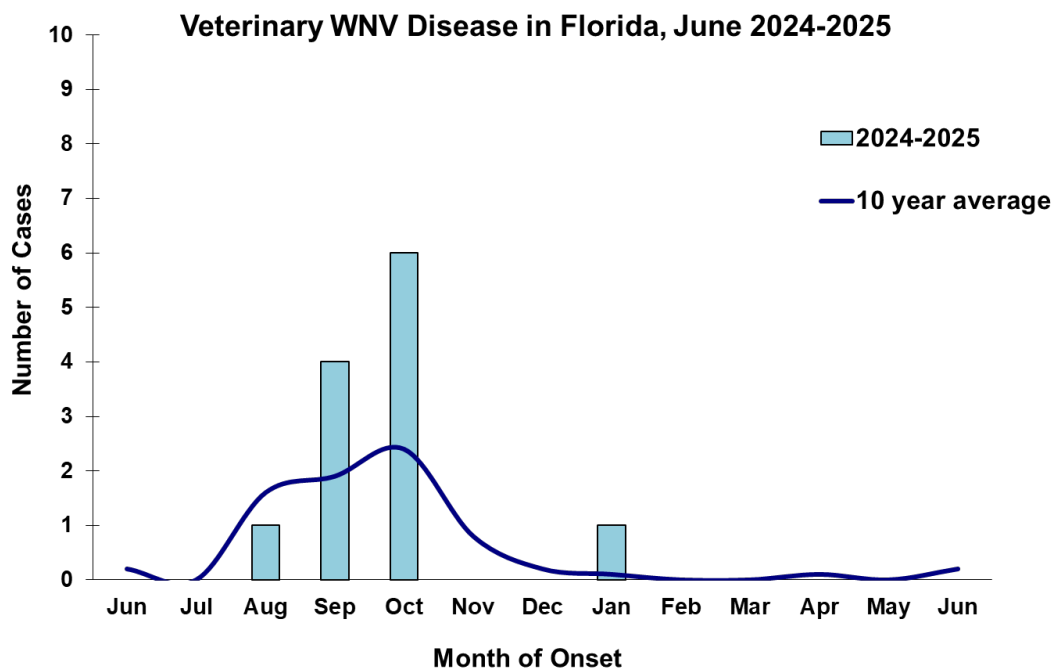
2025 International Travel-Associated Malaria Cases: Twenty cases with onset in 2025 have been reported in individuals with travel history to a malaria-endemic area. Counties reporting cases were: Alachua, Brevard, Broward (3), Collier, Hillsborough, Lake, Miami-Dade (4), Nassau, Orange, Palm Beach (2), Polk (2), and St. Lucie (2). Six cases were reported in non-Florida residents. Please see the table below for a breakdown of cases by country of origin and *Plasmodium* species.

Country of Exposure	<i>Plasmodium falciparum</i>	<i>Plasmodium vivax</i>	Total
Africa	2		2
Cameroon	1		1
Central America		1	1
Central/South America		2	2
Côte D'Ivoire	1		1
Gambia	1		1
Haiti		1	1
Honduras		1	1
India		1	1
Malawi	1		1
Nigeria	5		5
Rwanda	1		1
Siera Leone	1		1
Uganda	1		1
Total	14	6	20

Veterinary Cases**

**Veterinary cases are reported by date of onset. Only mammalian veterinary cases are included in the graphs.

Two horses with EEEV infection were reported this week in Jefferson and Levy counties.



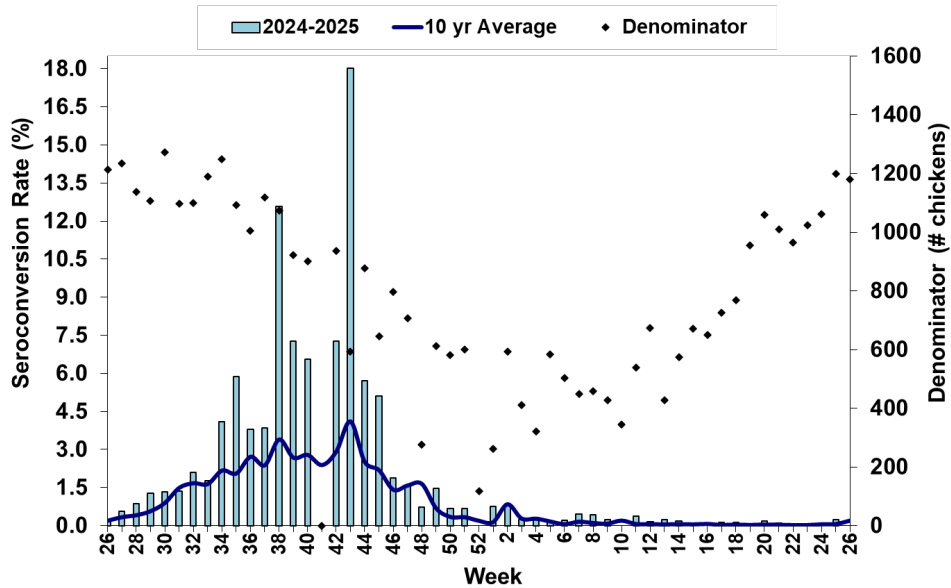
Sentinel Chickens

The table below is for the reporting of confirmatory laboratory results from this week. Some of the samples were collected at earlier dates. The date of collection is recorded for samples collected on that day along with the total number of positives and the corresponding seroconversion rate for the week the sample was collected.

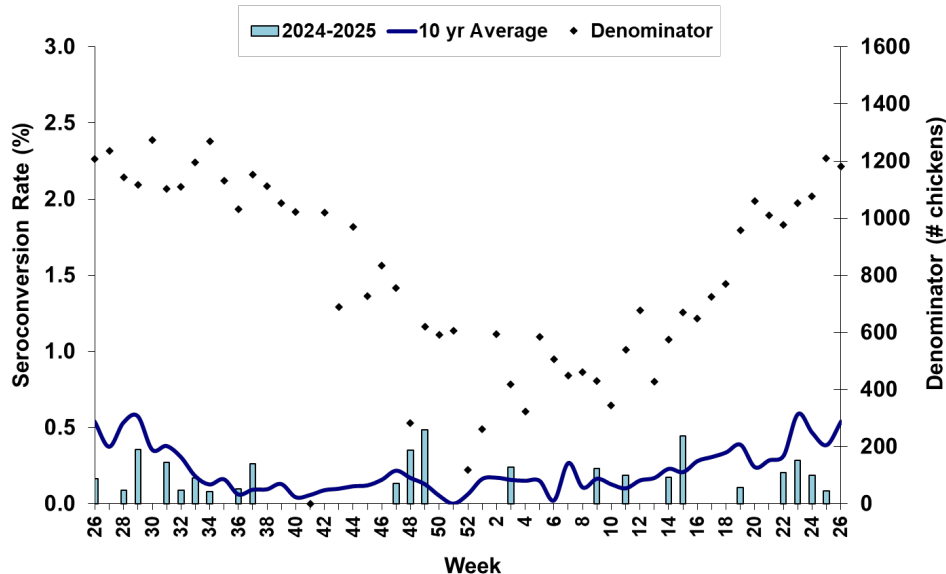
Three sentinel chickens tested positive for antibodies to WNV this week in Palm Beach and Polk counties. One sentinel chicken tested positive for antibodies to EEEV in Orange County.

County	Collection Date	Seroconversion Rates (%)						County Totals	
		Flavi	SLEV	WNV	Alpha	EEEV	HJV	Collection Week	YTD
Orange	6/16/2025				0.90	0.90		1 EEEV	5 EEEV, 1 WNV
Palm Beach	6/16/2025	7.41		7.41				2 WNV	15 WNV
Polk	6/16/2025	2.13		2.13				1 WNV	2 EEEV, 1 WNV

Sentinel Seroconversions to WNV in Florida, 2024–2025



Sentinel Seroconversions to EEEV in Florida, 2024–2025



Mosquito Pools

No mosquito pools tested positive for EEEV or WNV this week.

County	Collection Date	Result	Species	County YTD
--------	-----------------	--------	---------	------------

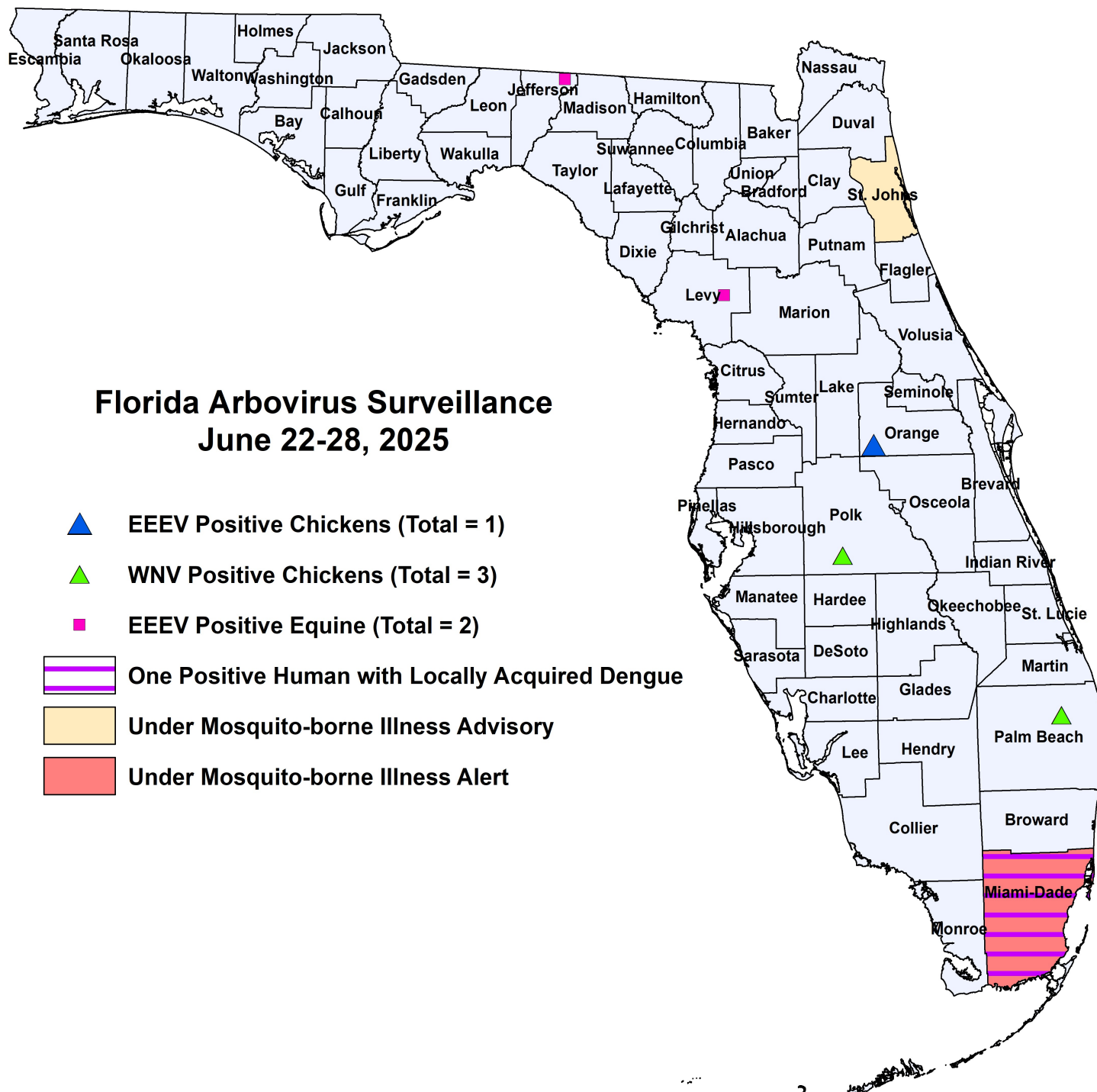
Dead Birds

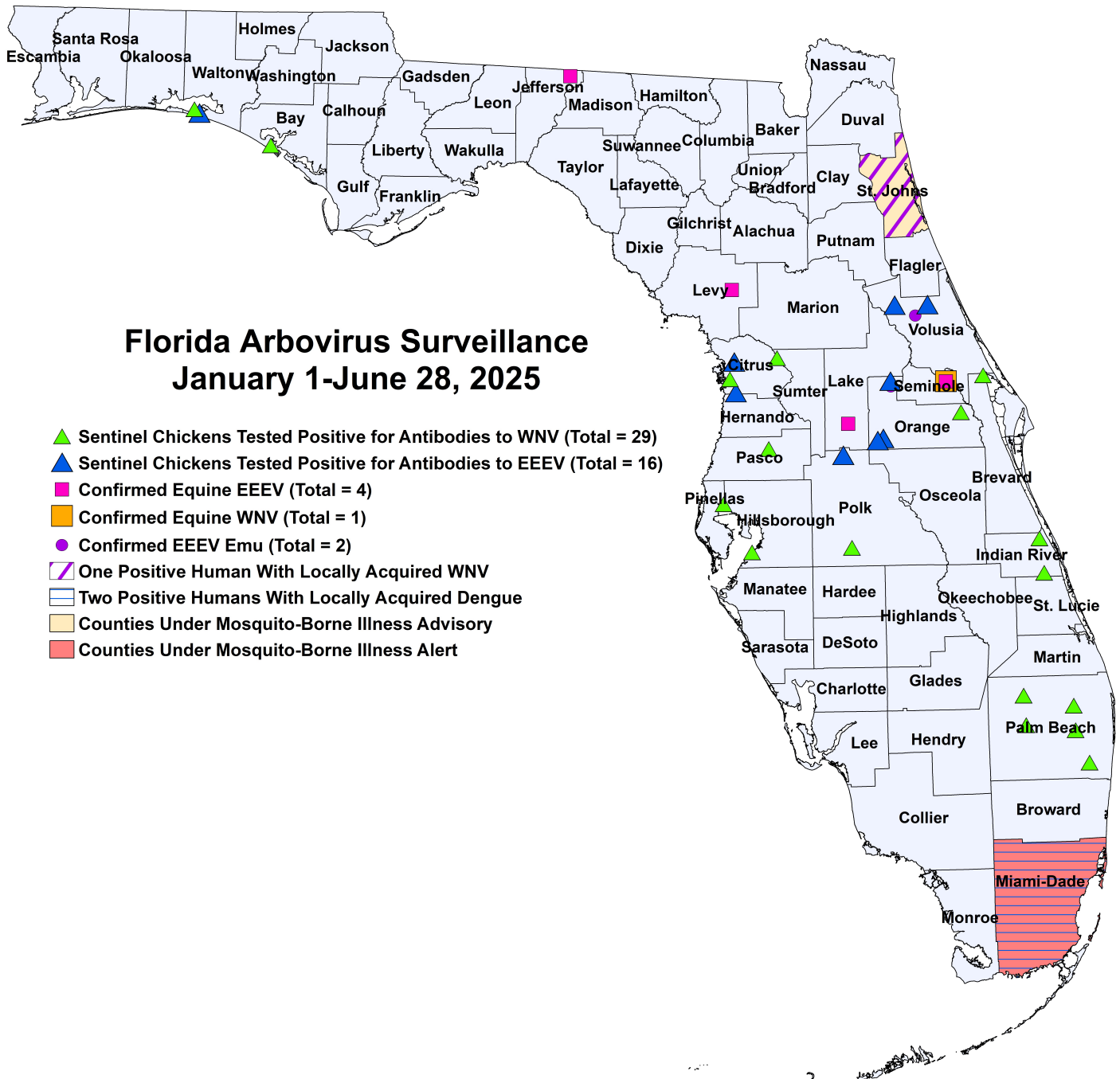
The Fish and Wildlife Conservation Commission (FWC) collects reports of dead birds, which can be an indication of arbovirus circulation in an area. This week, 19 reports representing a total of 39 dead birds, including five crows, one jay, and six raptors were received from 14 counties.

In 2025, 958 reports representing a total of 1977 dead birds (68 crows, 38 jays, 230 raptors, 118 doves) were received from 58 of Florida's 67 counties.

2025

County	Total Dead Birds	Crows	Jays	Raptors	Doves
Duval	1	1	0	0	0
Hillsborough	1	0	0	0	0
Lee	1	0	0	1	0
Leon	1	0	0	0	0
Manatee	1	0	0	0	0
Nassau	1	0	0	0	0
Orange	3	0	0	1	0
Osceola	16	0	0	0	0
Palm Beach	4	3	1	0	0
Pinellas	4	0	0	1	0
Sarasota	1	1	0	0	0
Seminole	3	0	0	2	0
St. Johns	1	0	0	1	0
Wakulla	1	0	0	0	0





2025 Mosquito-Borne Disease Activity by County

County	Humans	Equines	Sentinel Chickens	Other
Bay			1 WNV (3/24)	
Brevard			1 WNV (2/7)	
Citrus			5 EEEV (3/11), (4/1), (4/8), (5/28) 4 WNV (1/6), (2/10), (2/17)	
Hillsborough			1 WNV (4/21)	
Indian River			2 WNV (1/2)	
Jefferson		1 EEEV (6/12)		
Lake		1 EEEV (4/2)		
Levy		1 EEEV (6/20)		
Miami-Dade	2 dengue (February, June)			
Orange			5 EEEV (2/24), (4/7), (6/2), (6/9), (6/16) 1 WNV (3/31)	1 EEEV emu (1/1)
Palm Beach			15 WNV (1/7), (1/21), (1/27), (2/10), (2/17), (2/24), (3/10), (3/17), (4/29), (5/13), (6/16)	
Pasco			1 WNV (1/13)	
Pinellas			1 WNV (1/6)	
Polk			2 EEEV (6/2), (6/9) 1 WNV (6/16)	
Seminole		1 EEEV (1/5) 1 WNV (1/5)		
St. Johns	1 asymptomatic WNV (June)			
Volusia			2 EEEV (1/14), (4/8)	1 EEEV emu (1/2)
Walton			2 EEEV (5/5), (6/2) 1 WNV (5/19)	

Acknowledgements and Data Sources

Contributors: Andrea Morrison, PhD, MSPH, Rebecca Zimler, PhD, MPH, Olga Ospina, MPH, and Danielle Stanek, DVM, DOH Bureau of Epidemiology; Lea Heberlein, DrPH; Peter Dumoulin, PhD, Maribel Castaneda, and Amanda Davis, BS; DOH Bureau of Public Health Laboratories.

For more surveillance information, please see the DOH website at: www.floridahealth.gov/diseases-and-conditions/mosquito-borne-diseases/surveillance.html

For arbovirus surveillance information for the United States, please see the Centers for Disease Control and Prevention website at: www.cdc.gov/ncidod/dvbid/westnile/surv&control.htm

Case tallies included in the weekly Florida arbovirus surveillance report include confirmed and probable cases for EEE, WNV infection, SLE, dengue, chikungunya, and malaria by date of onset. Suspect cases are not included. Activity is mapped by county of exposure rather than county of residence. Case definitions being used in Florida are consistent with national criteria provided by the Council of State and Territorial Epidemiologists (CSTE) and may be viewed at: www.floridahealth.gov/diseases-and-conditions/disease-reporting-and-management/disease-reporting-and-surveillance/index.html. Case tallies reported by CDC do not include suspect cases and cases are reported by patient state of residence rather than where the exposure occurred. Data is provided by county health departments, Department of Health Bureau of Public Health Laboratories, Department of Agriculture and Consumer Services, mosquito control agencies, Florida Fish and Wildlife Conservation Commission, medical providers and veterinarians. Equine cases are provided by the Department of Agriculture and Consumer Services.