

Female Breast Cancer in Florida, 2009

*Florida Department of Health,
Division of Disease Control and Health Protection,
Bureau of Epidemiology*



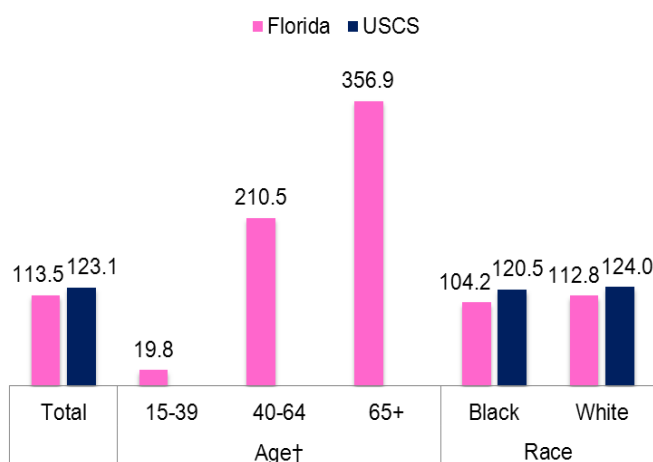
Breast cancer forms in tissues of the breast, usually in the ducts (tubes that carry milk to the nipple) and lobules (glands that make milk). Breast cancer was the most commonly diagnosed cancer among women in Florida during 2009, and was responsible for nearly 30% of all cancer cases among women. The strongest risk factor for female breast cancer is age. Besides age, other risk factors include: inherited changes in certain genes (e.g., BRCA1 and BRCA2), a personal or family history of breast cancer, having dense breasts, women who had radiation therapy to the chest (including the breasts) before the age of 30, beginning to menstruate before age 12, starting menopause after age 55, having a first full-term pregnancy after age 30, never having been pregnant, obesity after menopause, physical inactivity, alcohol use, and white race.

This report presents incidence data on breast cancer among females in Florida. Incidence data are obtained from the Florida Cancer Data System (FCDS), and mortality data from the Florida Department of Health, Office of Vital Statistics. The Florida data are compared with data from the United States Cancer Statistics (USCS).

Incidence

- In 2009, 13,829 new breast cancer cases were diagnosed among females in Florida.
- The age-adjusted incidence rate was 113.5 per 100,000 females, which was lower than the USCS rate (123.1 per 100,000 females).

Figure 1: Age-Adjusted Incidence Rates for Breast Cancer, Florida vs. USCS, 2009

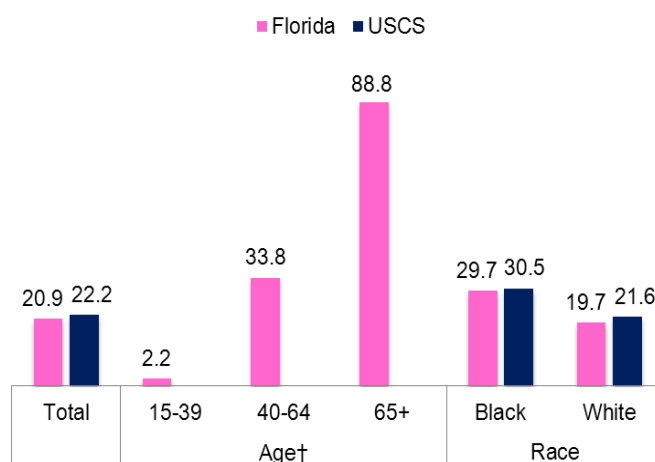


- The incidence rate was higher among females 65 years of age and older than among females less than 65 years of age (Figure 1).
- The Florida incidence rate was 8% higher among white females than among black females (Figure 1).
- The rates among both race groups in Florida were lower than the comparable USCS rates.

Mortality

- In 2009, 2,772 females died of breast cancer in Florida.
- The age-adjusted mortality rate was 20.9 per 100,000 females, which was lower than the USCS rate (22.2 per 100,000 females).

Figure 2: Age-Adjusted Mortality Rates for Breast Cancer, Florida vs. USCS, 2009

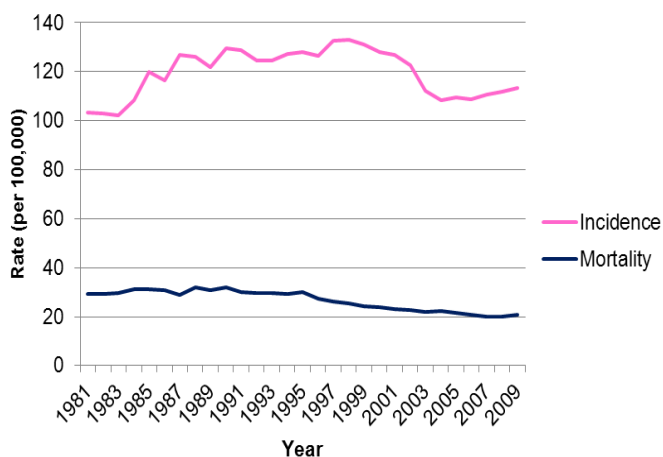


- The mortality rate was higher among females 65 years of age and older than among females less than 65 years of age (Figure 2).
- The Florida mortality rate was 51% higher among black females than among white females (Figure 2).
- The rates among both racial groups in Florida were lower than the comparable USCS rates.

Trends in Incidence and Mortality Rates

- Although the overall 2009 incidence rate (113.5 per 100,000) was 10% higher than the 1981 overall rate (103.5 per 100,000), the 2009 rate was 11% lower than the 2000 rate (127.9 per 100,000, Figure 3).
- The overall 2009 mortality rate (20.9 per 100,000) was 28% lower than the 1981 overall rate (29.2 per 100,000, Figure 3).

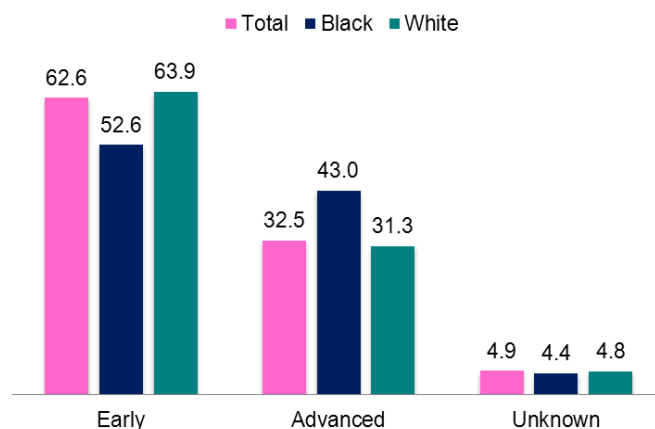
Figure 3: Trends in Age-Adjusted Incidence Rates, 1981-2009



Stage at Diagnosis

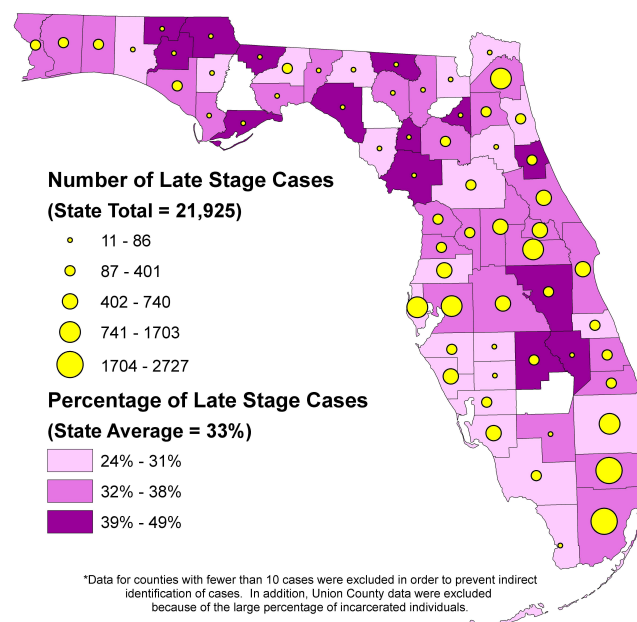
- Early-stage breast cancer is defined in this report as cancer that is localized to one part or organ of the body. Advanced-stage cancer is defined as cancer that has spread to other organs or throughout the body beyond the organ of origin.
- Of all breast cancer cases diagnosed in Florida during 2009, 32.5% were diagnosed at an advanced stage (Figure 4).
- The percentage of cases with an advanced-stage diagnosis was higher among blacks (43.0%) than whites (31.3 %, Figure 4).

Figure 4: Percentage of New Breast Cancer Cases by Stage at Diagnosis, Florida, 2009



- Between 2005 and 2009, more than 39% of total breast cancer cases diagnosed at an advanced stage were detected in 14 of 67 Florida counties (21%).

Figure 5: Prevalence of Late-Stage Breast Cancer in Florida, 2005-2009



For additional information on this report, please contact the Florida Department of Health, Bureau of Epidemiology, at 850.245.4401 or visit our website at: <http://www.floridahealth.gov/diseases-and-conditions/cancer/index.html>

For additional information on breast cancer, please visit the Florida Department of Health, Breast and Cervical Cancer Early Detection Program's website at: <http://www.floridahealth.gov/diseases-and-conditions/cancer/breast-cancer/bccedp.html>