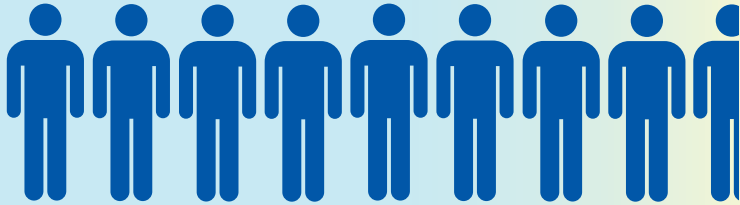


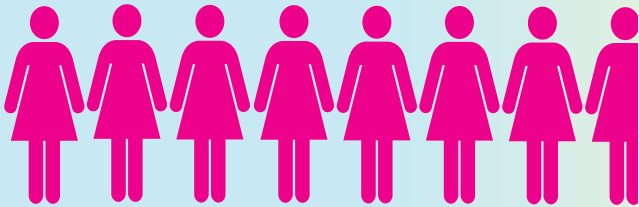
Lung Cancer in Florida, 2012

Florida New Cases'

8,663

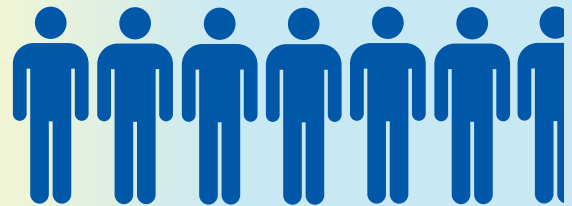


7,758

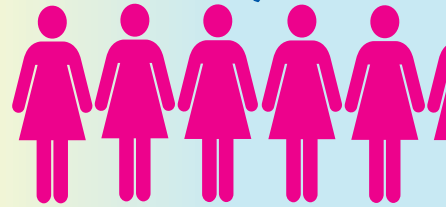


Florida Deaths

6,700



5,191

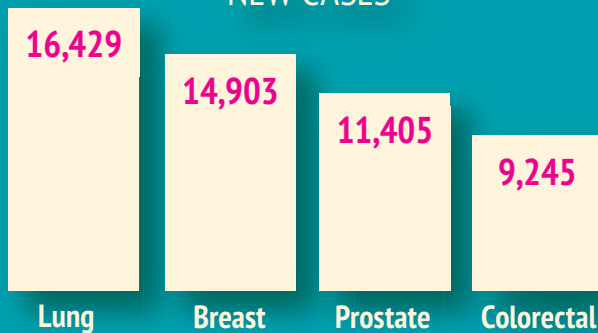


*Each male and female icon represents 1,000 people.



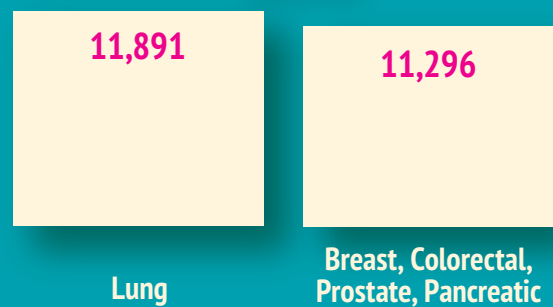
There were more new cases of lung cancer than any other cancer

NEW CASES



Lung cancer was responsible for more deaths than breast, prostate, colorectal, and pancreatic cancers combined

DEATHS

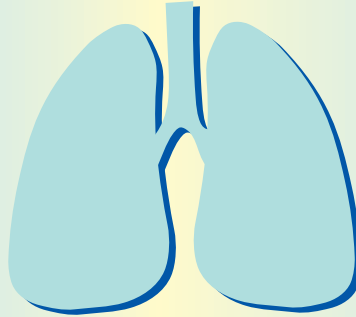


Additional Information on Side 2

Lung Cancer in Florida, 2012

Rate of new cases of lung cancer from 1992 to 2012 has dropped by

23%

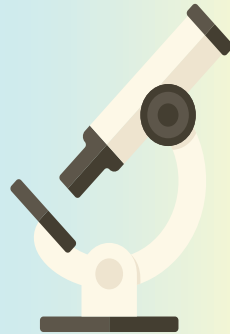


Rate of deaths from lung cancer from 1992 to 2012 has dropped by

26%



7 out of **10** cases of lung cancer were diagnosed at a late stage



Total charges for all cancer hospitalizations due to lung cancer in Florida for 2012²

\$758,100,000



Cigarette Smoking

is the #1 risk factor for lung cancer and is linked to about

90% of Lung Cancers³

Tobacco Free Florida offers 3 free & easy ways to quit.

For more information call:

1-877-U-CAN-NOW or visit: www.TobaccoFreeFlorida.com

Tobacco Free Florida
O.com

¹ US incidence and mortality data obtained from the United States Cancer Statistics: [//nccd.cdc.gov/uscs/cancersbyraceandethnicity.aspx](http://nccd.cdc.gov/uscs/cancersbyraceandethnicity.aspx)

² Source: [//fcds.med.miami.edu/downloads/FloridaAnnualCancerReport/2012/Table_No_T38_\(2012\).pdf](http://fcds.med.miami.edu/downloads/FloridaAnnualCancerReport/2012/Table_No_T38_(2012).pdf)

³ Source: www.cdc.gov/cancer/lung/basic_info/risk_factors.htm