



Florida Arbovirus Surveillance Week 8: February 16-22, 2020

Arbovirus surveillance in Florida includes endemic mosquito-borne viruses such as West Nile virus (WNV), Eastern equine encephalitis virus (EEEV), and St. Louis encephalitis virus (SLEV), as well as exotic viruses such as dengue virus (DENV), chikungunya virus (CHIKV), Zika virus (ZIKV), and California encephalitis group viruses (CEV). Malaria, a parasitic mosquito-borne disease is also included. During the period of February 16-22, 2020, the following arboviral activity was recorded in Florida.

WNV activity: No human cases of WNV infection were reported this week. No horses with WNV infection were reported this week. Four sentinel chickens tested positive for antibodies to WNV this week in Hillsborough and Brevard counties. In 2020, 28 sentinel chickens have been reported from nine counties.

SLEV activity: No human cases of SLEV infection were reported this week. No sentinel chickens tested positive for antibodies to SLEV this week. In 2020, no positive samples have been reported.

EEEV activity: No human cases of EEEV infection were reported this week. No horses with EEEV infection were reported this week. One sentinel chicken tested positive for antibodies to EEEV this week in Orange County. In 2020, seven sentinel chickens, one horse, and one mosquito pool have been reported from five counties.

International Travel-Associated Dengue Fever Cases: One case of dengue fever was reported this week in a person that had international travel. In 2020, fourteen travel-associated cases have been reported.

Dengue Fever Cases Acquired in Florida: No cases of locally acquired dengue fever were reported this week. In 2020, no cases of locally acquired dengue fever have been reported.

International Travel-Associated Chikungunya Fever Cases: No cases of chikungunya fever were reported this week in persons that had international travel. In 2020, no travel-associated chikungunya fever cases have been reported.

Chikungunya Fever Cases Acquired in Florida: No cases of locally acquired chikungunya fever were reported this week. In 2020, no cases of locally acquired chikungunya fever have been reported.

International Travel-Associated Zika Fever Cases: No cases of Zika fever were reported this week in persons that had international travel. In 2020, no travel-associated Zika fever cases have been reported.

Zika Fever Cases Acquired in Florida: No cases of locally acquired Zika fever were reported this week. In 2020, no cases of locally acquired Zika fever have been reported.

Advisories/Alerts: Miami-Dade County is currently under a mosquito-borne illness alert. No other counties are currently under mosquito-borne illness advisory or alert.

There is a Level 2 Travel Health Notice for Nigeria related to the transmission of yellow fever virus. There are also Level 1 Travel Health Notices for Central and South America, Mexico, the Caribbean, Asia, the Pacific Islands, Africa, and the Middle East related to the transmission of dengue virus, for Burundi related to Malaria transmission, and for Ethiopia related to chikungunya transmission. Additional information on travel health notices can be found at the following link: wwwnc.cdc.gov/travel/notices. For a map of arboviral disease activity in the United States visit: wwwn.cdc.gov/arbonet/maps/ADB_Diseases_Map/index.html.

2020 Human Case Summary*

International Travel-Associated Dengue Fever Cases

Fourteen cases of dengue fever with onset in 2020 have been reported in individuals with travel history to a dengue endemic area in the two weeks prior to onset. Counties reporting cases were: Broward (5), Franklin, Hillsborough (3), Miami-Dade (3), Seminole, and St. Lucie. Two cases were reported in non-Florida residents. In 2020, three cases of dengue reported in Florida have been serotyped by PCR*. Please see the table below for a breakdown of cases by country of origin and serotype.

Country of Exposure	DENV-1	DENV-3	DENV-1/ DENV-3	Unknown*	Total
Jamaica		1	1	2	4
Cuba				2	2
Bahamas	1				1
Bolivia				1	1
Brazil				1	1
Colombia				1	1
Dominican Republic				1	1
Nicaragua				1	1
Puerto Rico/U.S. Virgin Islands				1	1
U.S. Virgin Islands				1	1
Total	1	1	1	11	14

*Serotyping for 10 cases are pending and will be added in future weeks.

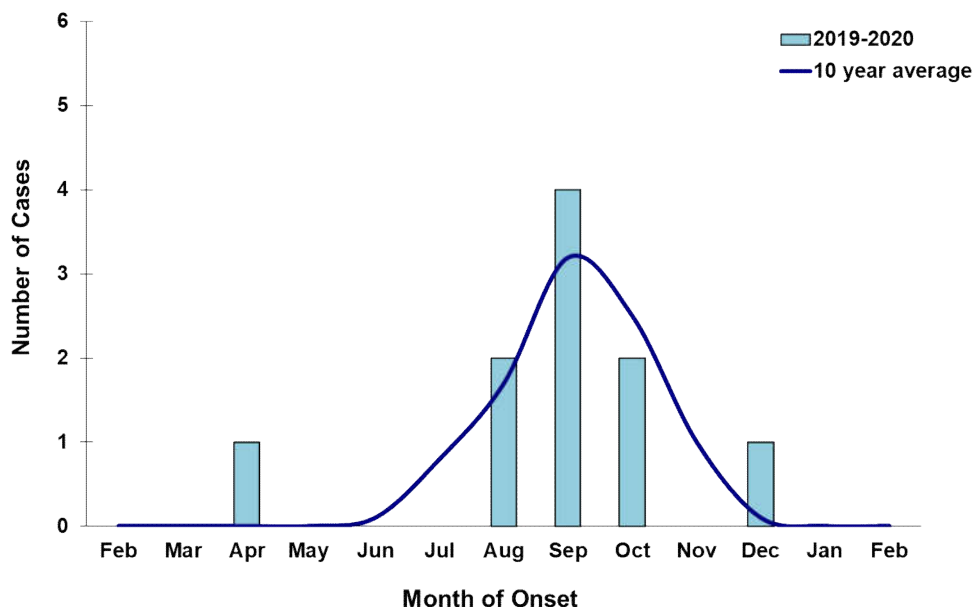
International Travel-Associated Malaria Cases: Two cases of malaria with onset in 2020 have been reported. Countries of origin were: Dominican Republic and Nigeria. Counties reporting cases were: Miami-Dade and Polk. Both cases were diagnosed with *Plasmodium falciparum*. One case was reported in a non-Florida resident.

Veterinary Cases*

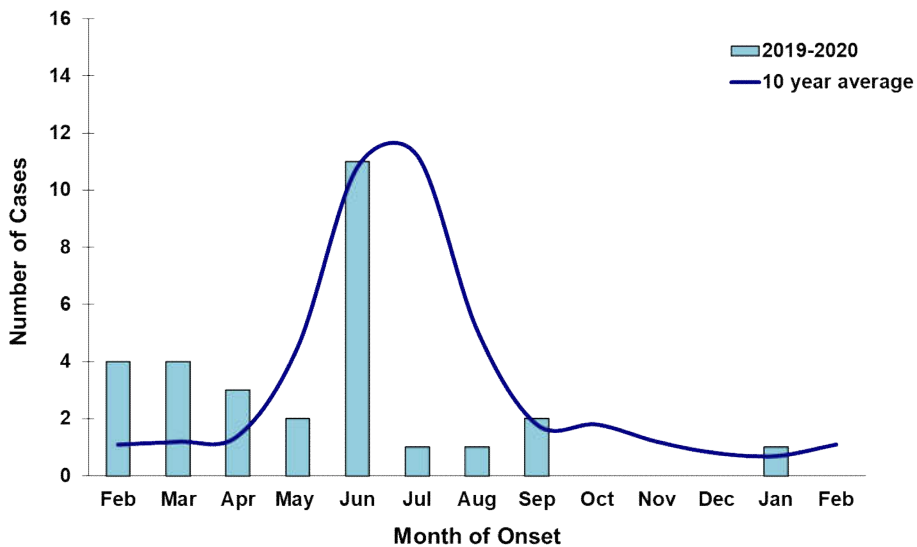
*Veterinary cases are reported by date of onset. Only mammalian veterinary cases are included in the graphs.

No veterinary cases were reported this week.

Veterinary WNV Disease in Florida, February 2019-2020



Veterinary EEEV Disease in Florida, February 2019-2020



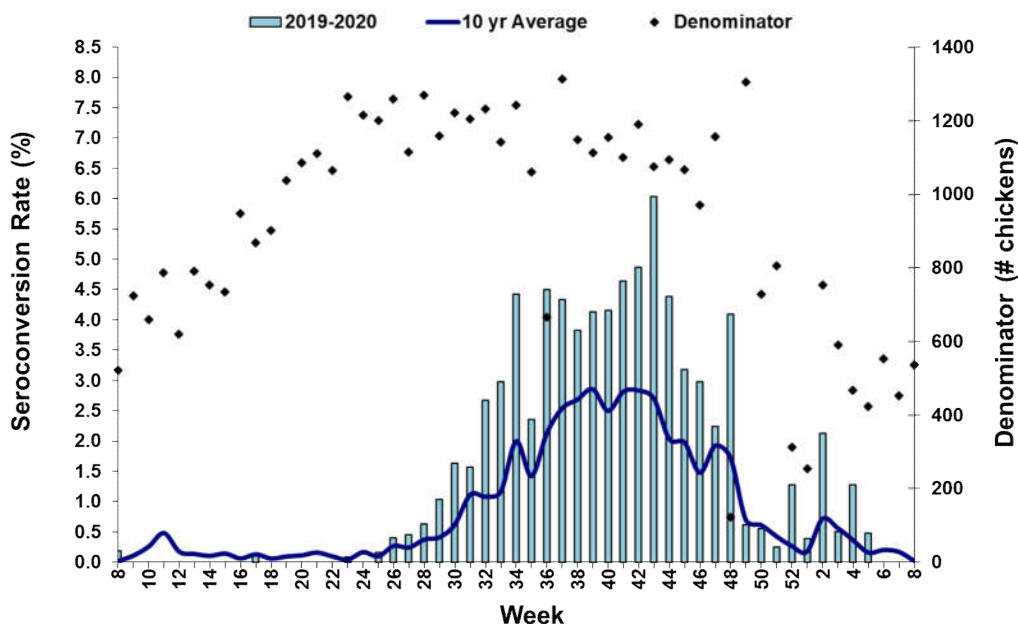
Sentinel Chickens*

The table below is for the reporting of confirmatory laboratory results from this week. Some of the samples were collected at earlier dates. The date of collection is recorded for samples collected on that day along with the total number of positives and the corresponding seroconversion rate for the week the sample was collected.

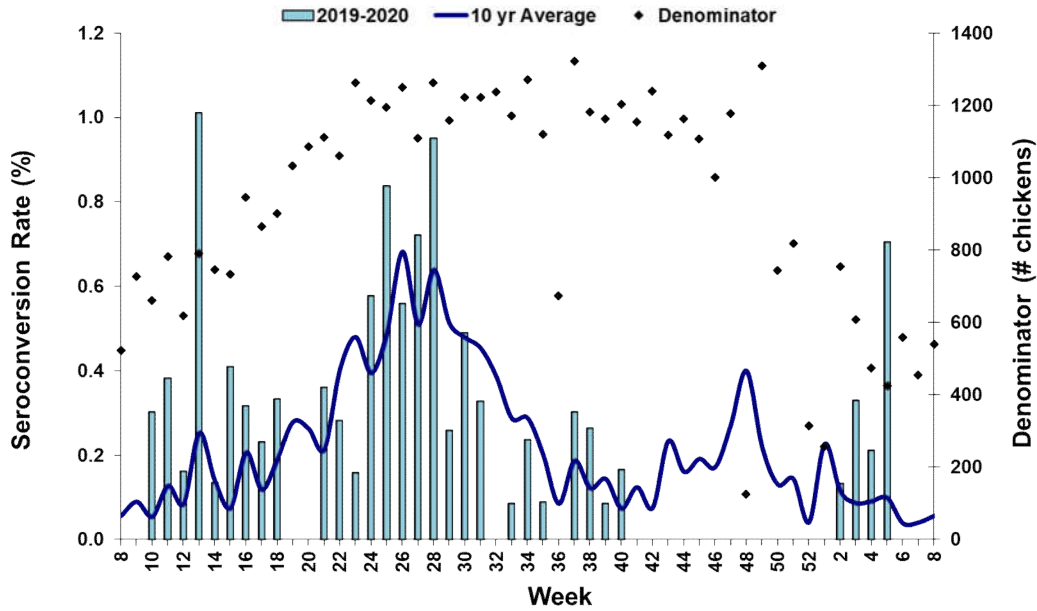
Four sentinel chickens tested positive for antibodies to WNV this week in Hillsborough and Brevard counties. One sentinel chicken tested positive for antibodies to EEEV this week in Orange County.

County	Collection Date	Seroconversion Rates (%)						County Totals	
		Flavi	SLEV	WNV	Alpha	EEEV	HJV	Collection Week	YTD
Brevard	1/23/20-1/24/20	3.77		3.77				2 WNV	2 WNV
Hillsborough	1/29/20	4.44		4.44				2 WNV	6 WNV
Orange	1/27/20				3.70	3.70		3 EEEV	3 WNV, 5 EEEV

Sentinel Seroconversions to WNV in Florida, 2019-2020



Sentinel Seroconversions to EEEV in Florida, 2019-2020



Mosquito Pools

No mosquito pools tested positive for EEEV or WNV this week.

County	Collection Date	Result	Species	County YTD

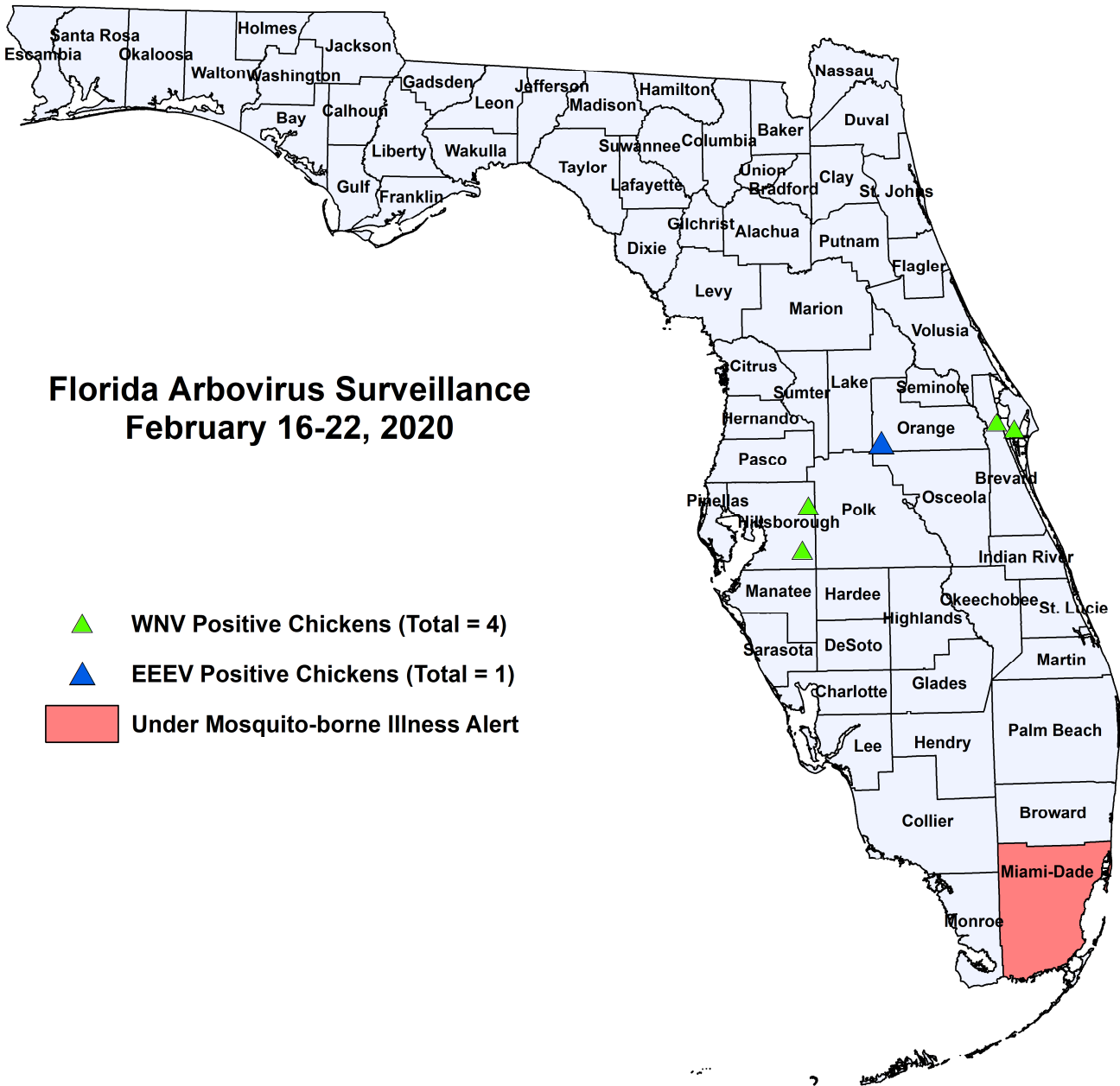
Dead Birds

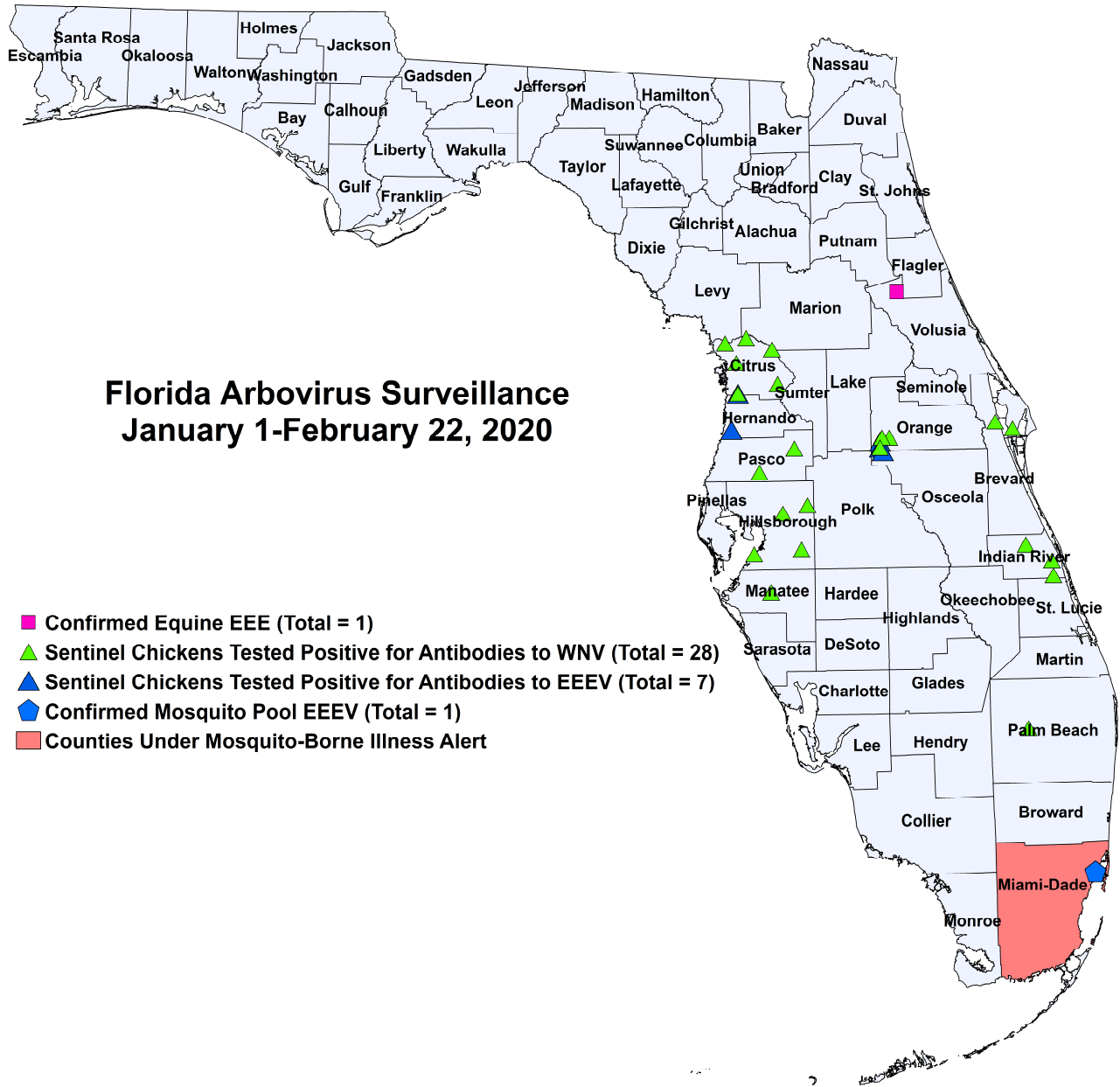
The Fish and Wildlife Conservation Commission (FWC) collects reports of dead birds, which can be an indication of arbovirus circulation in an area. This week, six reports representing a total of 19 dead birds, including two raptors, were received from six counties.

In 2020, 62 reports representing a total of 171 dead birds (16 crows, 1 jay, 16 raptors) were received from 25 of Florida's 67 counties.

2020

County	Total Dead Birds	Crows	Jays	Raptors	Doves
Broward	1	0	0	1	0
Charlotte	1	0	0	0	0
Collier	1	0	0	0	0
Okaloosa	5	0	0	0	0
Palm Beach	1	0	0	1	0
Volusia	10	0	0	0	0





Florida Arbovirus Surveillance January 1-February 22, 2020

- Confirmed Equine EEE (Total = 1)
- ▲ Sentinel Chickens Tested Positive for Antibodies to WNV (Total = 28)
- ▲ Sentinel Chickens Tested Positive for Antibodies to EEEV (Total = 7)
- ◆ Confirmed Mosquito Pool EEEV (Total = 1)
- Counties Under Mosquito-Borne Illness Alert

2020 Arbovirus Activity by County	
County	Arbovirus Activity
Brevard	WNV: 2 sentinels (1/23, 1/24)
Citrus	WNV: 8 sentinels (1/8, 1/14, 1/21) EEEV: 1 sentinel (1/8)
Hernando	EEEV: 1 sentinel (1/21)
Hillsborough	WNV: 6 sentinels (1/6, 1/21, 1/29)
Indian River	WNV: 3 sentinels (1/2, 1/9, 1/10)
Manatee	WNV: 3 sentinels (1/8)
Miami-Dade	EEEV: 1 mosquito pool (1/7)
Orange	WNV: 3 sentinels (1/6) EEEV: 5 sentinels (1/13, 1/27, 1/28)
Palm Beach	WNV: 1 sentinel (1/20)
Pasco	WNV: 2 sentinels (1/7)
Volusia	EEEV: 1 horse (1/24)

Acknowledgements and Data Sources

Contributors: Andrea Morrison, PhD, MSPH, Devin Rowe, MS, Catherine McDermott, MPH, MHS, and Danielle Stanek, DVM, DOH Bureau of Epidemiology; Lea Heberlein-Larson, DrPH; Alexis LaCruce, PhD, MS; Maribel Castaneda, and Valerie Mock, BS; DOH Bureau of Public Health Laboratories; Carina Blackmore, DVM, PhD, DOH Division of Disease Control and Health Protection.

For more surveillance information, please see the DOH website at: www.floridahealth.gov/diseases-and-conditions/mosquito-borne-diseases/surveillance.html

For arbovirus surveillance information for the United States, please see the Centers for Disease Control and Prevention website at: www.cdc.gov/ncidod/dvbid/westnile/surv&control.htm

Case tallies included in the weekly Florida arbovirus surveillance report include confirmed and probable cases for EEE, WNV infection, SLE, dengue, chikungunya, and malaria by date of onset. Suspect cases are not included. Activity is mapped by county of exposure rather than county of residence. Case definitions being used in Florida are consistent with national criteria provided by the Council of State and Territorial Epidemiologists (CSTE) and may be viewed at: www.floridahealth.gov/diseases-and-conditions/disease-reporting-and-management/disease-reporting-and-surveillance/index.html. Case tallies reported by CDC do not include suspect cases and cases are reported by patient state of residence rather than where the exposure occurred. Data is provided by county health departments, Department of Health Bureau of Public Health Laboratories, Department of Agriculture and Consumer Services, mosquito control agencies, Florida Fish and Wildlife Conservation Commission, medical providers and veterinarians. Equine cases are provided by the Department of Agriculture and Consumer Services.