



Florida Arbovirus Surveillance Week 1: January 3-9, 2021

Arbovirus surveillance in Florida includes endemic mosquito-borne viruses such as West Nile virus (WNV), Eastern equine encephalitis virus (EEEV), and St. Louis encephalitis virus (SLEV), as well as exotic viruses such as dengue virus (DENV), chikungunya virus (CHIKV), Zika virus (ZIKV), and California encephalitis group viruses (CEV). Malaria, a parasitic mosquito-borne disease is also included. During the period of January 3-9, 2021, the following arboviral activity was recorded in Florida.

There have been no reports in 2021 of arboviral disease cases in humans or horses and no antibody positive sentinels. Numbers here are for onsets in the 2020 calendar year unless otherwise noted.

WNV activity: No human cases of WNV infection were reported this week. No horses with WNV infection were reported this week. No sentinel chickens tested positive for antibodies to WNV this week. In 2020, positive samples from 50 humans, 36 asymptomatic blood donors, 14 horses, four crows, 11 blue jays, two ibises, one squirrel, 19 mosquito pools, and 414 sentinel chickens have been reported from 34 counties.

SLEV activity: No human cases of SLEV infection were reported this week. Two sentinel chickens tested positive for antibodies to SLEV this week in Indian River and Pasco counties. In 2020, positive samples from eight sentinel chickens have been reported from seven counties.

EEEV activity: No human cases of EEEV infection were reported this week. No horses with EEEV infection were reported this week. No sentinel chickens tested positive for antibodies to EEEV this week. In 2020, positive samples from 54 sentinel chickens, 22 horses, one deer, one duck, two sparrows, and one mosquito pool have been reported from 27 counties.

International Travel-Associated Dengue Fever Cases: Two cases of dengue fever were reported this week in persons that had international travel. In 2020, 43 travel-associated cases have been reported.

Dengue Fever Cases Acquired in Florida: No cases of locally acquired dengue fever were reported this week. In 2020, positive samples from 71 humans and seven mosquito pools have been reported from two counties.

International Travel-Associated Chikungunya Fever Cases: No cases of chikungunya fever were reported this week in persons that had international travel. In 2020, no travel-associated chikungunya fever cases have been reported.

Chikungunya Fever Cases Acquired in Florida: No cases of locally acquired chikungunya fever were reported this week. In 2020, no cases of locally acquired chikungunya fever have been reported.

International Travel-Associated Zika Fever Cases: No cases of Zika fever were reported this week in persons that had international travel. In 2020, no travel-associated Zika fever cases have been reported.

Zika Fever Cases Acquired in Florida: No cases of locally acquired Zika fever were reported this week. In 2020, no cases of locally acquired Zika fever have been reported.

Advisories/Alerts: Charlotte, Hendry, Hillsborough, and Indian River counties are currently under a mosquito-borne illness advisory. Broward and Monroe counties are currently under a mosquito-borne illness alert. No other counties are currently under mosquito-borne illness advisory or alert. A Level 1 Travel Health Notice has been issued for Central and South America, Mexico, the Caribbean, Asia, the Pacific Islands, Africa, and the

Middle East related to the transmission of dengue virus, for Chad and Ethiopia related to chikungunya virus transmission, and for Burundi related to malaria transmission. A Level 2 Travel Health Alert has been issued for Nigeria related to the transmission of yellow fever virus. Additional information on travel health notices can be found at: wwwnc.cdc.gov/travel/notices. For a map of arboviral disease activity in the United States visit: www.cdc.gov/arbovet/maps/ADB_Diseases_Map/index.html.

2020 Human Case Summary*

West Nile Virus Illnesses Acquired in Florida: Fifty human cases of WNV illness acquired in Florida have been reported in 2020: 27 in Miami-Dade County (April, June, July, August, September), six in Broward County (July, August, October), seven in Collier County (July, August, September, October), five in Palm Beach County (June, July, August), one in Bay County (August), one in Charlotte County (September), one in Lee County (October), one in Martin County (October), and one in Suwannee County (October). Thirty-six asymptomatic positive blood donors have been reported in 2020: 33 in Miami-Dade County (May, June, July, and August), one in Broward County (August), one in Hillsborough County (October), and one in Manatee County (September).

International Travel-Associated Dengue Fever Cases: Forty-three cases of dengue fever with onset in 2020 have been reported in individuals with travel history to a dengue endemic area in the two weeks prior to onset. Counties reporting cases were: Brevard (2), Broward (6), Clay, Collier, Duval, Franklin, Hillsborough (3), Miami-Dade (22), Orange (2), Palm Beach, Sarasota, Seminole, and St. Lucie. Six cases were reported in non-Florida residents. In 2020, 32 cases of dengue reported in Florida have been serotyped by PCR. Please see the table below for a breakdown of cases by country of origin and serotype.

| Country of Exposure | DENV-1 | DENV-2 | DENV-3 | DENV-4 | Unknown | Total |
|-------------------------------|-----------|----------|----------|----------|-----------|-----------|
| Cuba | 5 | 1 | | | 1 | 7 |
| Bolivia | 2 | | | | 2 | 4 |
| Jamaica | | | 3 | | 1 | 4 |
| Puerto Rico | 1 | | | | 2 | 3 |
| Colombia | 2 | | | | | 2 |
| Dominican Republic | 2 | | | | | 2 |
| Haiti | | 2 | | | | 2 |
| Indonesia | | | | | 2 | 2 |
| Mexico | 1 | | | | 1 | 2 |
| Paraguay | | | | 2 | | 2 |
| US Virgin Islands | | 1 | | | 1 | 2 |
| Antigua and Barbuda | | | 1 | | | 1 |
| Bahamas | 1 | | | | | 1 |
| Brazil | | 1 | | | | 1 |
| French Polynesia | | 1 | | | | 1 |
| Nicaragua | | 1 | | | | 1 |
| Puerto Rico/US Virgin Islands | 1 | | | | | 1 |
| St. Barts | 1 | | | | | 1 |
| St. Barts/St. Martin | 1 | | | | | 1 |
| St. Lucia | | | 1 | | | 1 |
| St. Martin | 1 | | | | | 1 |
| Thailand | | | | | 1 | 1 |
| Total | 18 | 7 | 5 | 2 | 11 | 43 |

Dengue Fever Cases Acquired in Florida: In 2020, 71 cases of locally acquired dengue fever have been reported in Miami-Dade (4) and Monroe (67) counties, with onsets in February, March, April, May, June, July, August, and September. One case was reported in a non-Florida resident.

International Travel-Associated Malaria Cases: Eighteen cases of malaria with onset in 2020 have been reported. Countries of origin were: Cameroon, Côte d'Ivoire, Dominican Republic, Ghana, India (2), Kenya (2), Nicaragua, Nigeria (2), Sierra Leone (3), Sudan, Uganda, and Venezuela (2). Counties reporting cases were:

Broward (4), Clay, Duval (2), Hillsborough, Lee, Miami-Dade (2), Orange, Osceola, Palm Beach, Pasco, Pinellas, Polk, and Volusia. Four cases were reported in non-Florida residents.

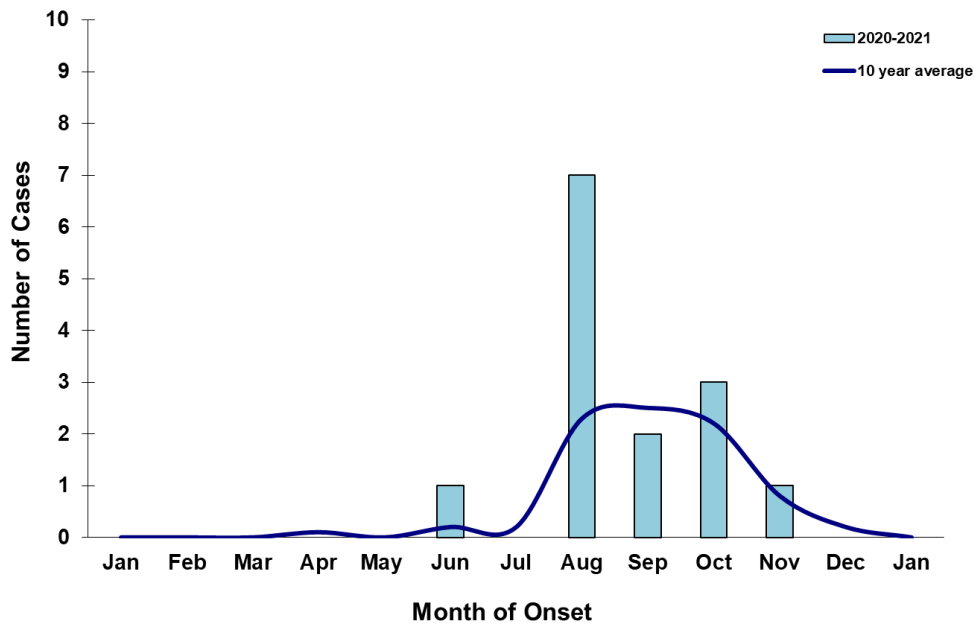
Nine cases (50%) were diagnosed with *Plasmodium falciparum*. Six cases (33%) were diagnosed with *Plasmodium vivax*. Two cases (11%) were diagnosed with *Plasmodium ovale*. The *Plasmodium* species for one case (6%) was unknown due to low parasitemia.

Veterinary Cases*

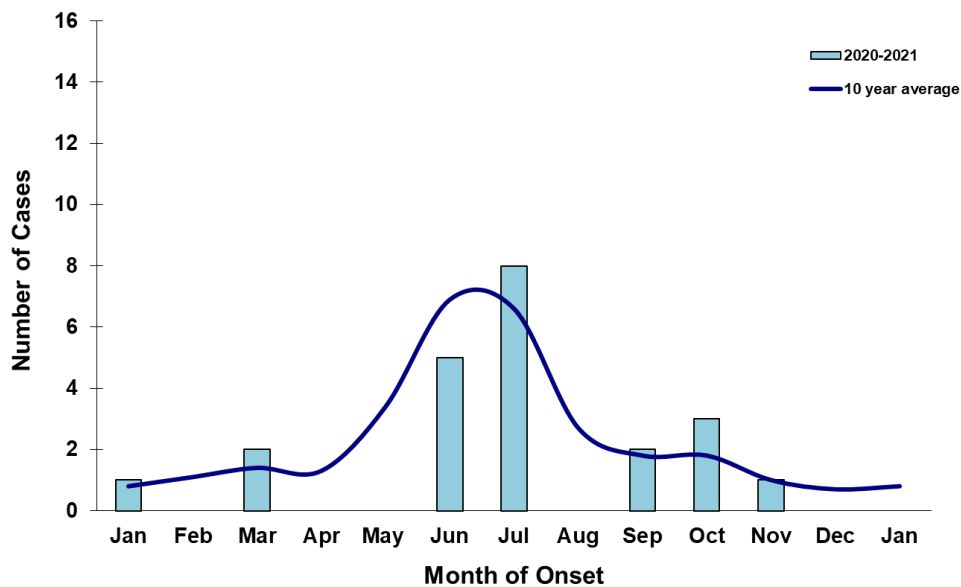
*Veterinary cases are reported by date of onset. Only mammalian veterinary cases are included in the graphs.

No veterinary cases were reported this week.

Veterinary WNV Disease in Florida, January 2020-2021



Veterinary EEEV Disease in Florida, January 2020-2021



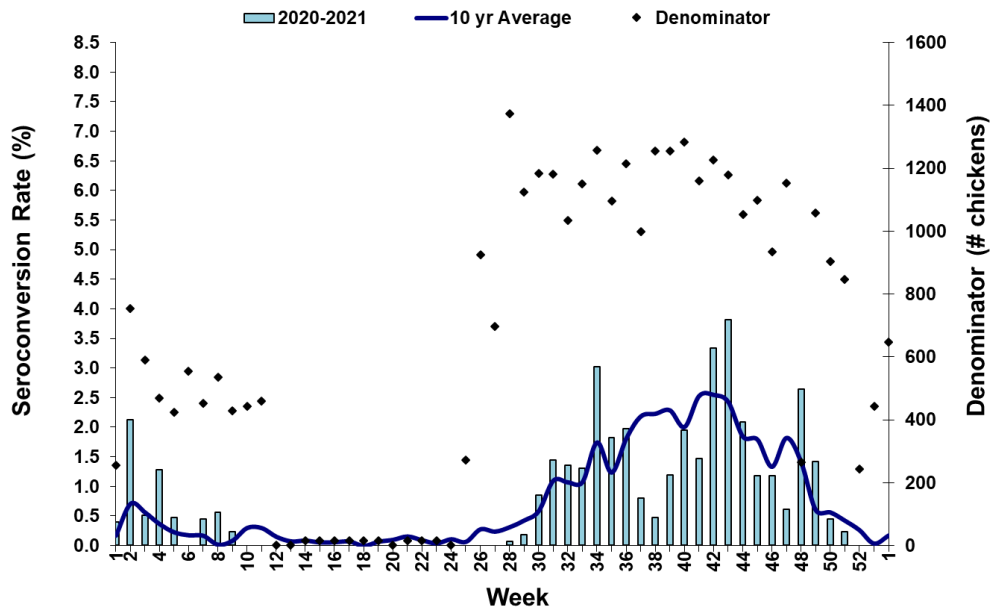
Sentinel Chickens*

The table below is for the reporting of confirmatory laboratory results from this week. Some of the samples were collected at earlier dates. The date of collection is recorded for samples collected on that day along with the total number of positives and the corresponding seroconversion rate for the week the sample was collected.

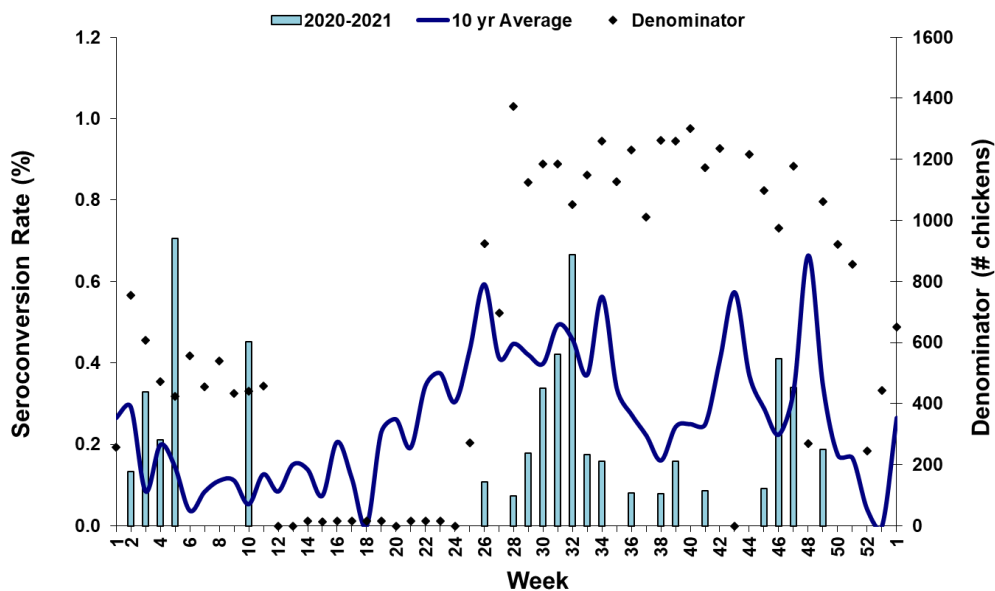
Two sentinel chickens tested positive for antibodies to SLEV this week in Indian River and Pasco counties.

| County | Collection Date | Seroconversion Rates (%) | | | | | County Totals | | |
|--------------|-----------------|--------------------------|------|-----|-------|------|---------------|-----------------|------------------------|
| | | Flavi | SLEV | WNV | Alpha | EEEV | HJV | Collection Week | YTD |
| Indian River | 12/17/2020 | 2.17 | 2.17 | | | | | 1 SLEV | 12 WNV, 1 SLEV |
| Pasco | 12/23/2020 | 2.17 | 2.17 | | | | | 1 SLEV | 15 WNV, 1 EEEV, 1 SLEV |

Sentinel Seroconversions to WNV in Florida, 2020-2021



Sentinel Seroconversions to EEEV in Florida, 2020-2021



Mosquito Pools

No mosquito pools tested positive for WNV or EEEV this week.

| County | Collection Date | Result | Species | County YTD |
|--------|-----------------|--------|---------|------------|
| | | | | |

Dead Birds

The Fish and Wildlife Conservation Commission (FWC) collects reports of dead birds, which can be an indication of arbovirus circulation in an area. This week, seven reports representing a total of seven dead birds, including one raptor, was received from five counties.

In 2020, 443 reports representing a total of 1120 dead birds (41 crows, 47 jays, 100 raptors, 38 doves) were received from 43 of Florida's 67 counties.

2020

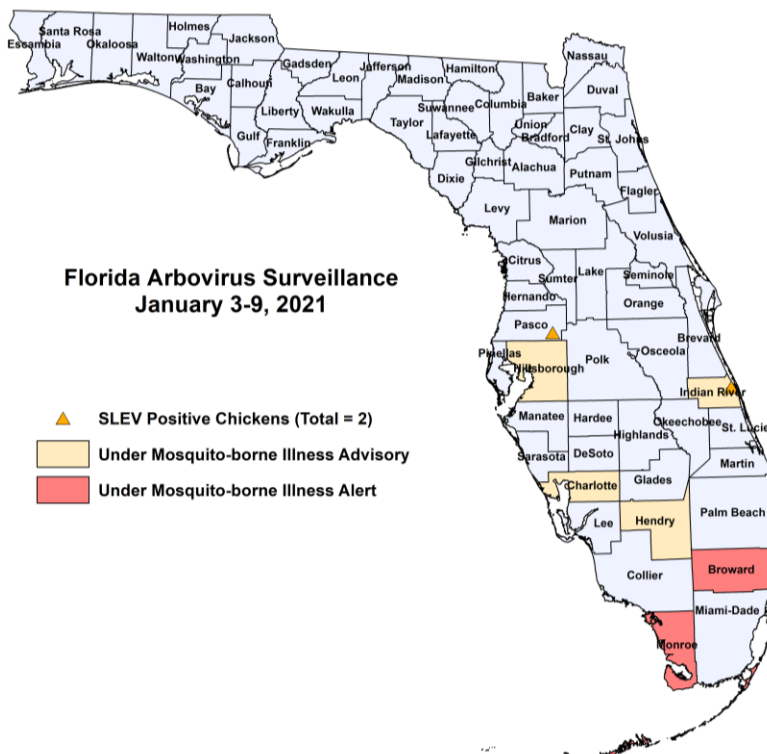
| County | Total Dead Birds | Crows | Jays | Raptors | Doves |
|-----------|------------------|-------|------|---------|-------|
| Charlotte | 2 | 0 | 0 | 0 | 0 |
| Lee | 2 | 0 | 0 | 0 | 0 |

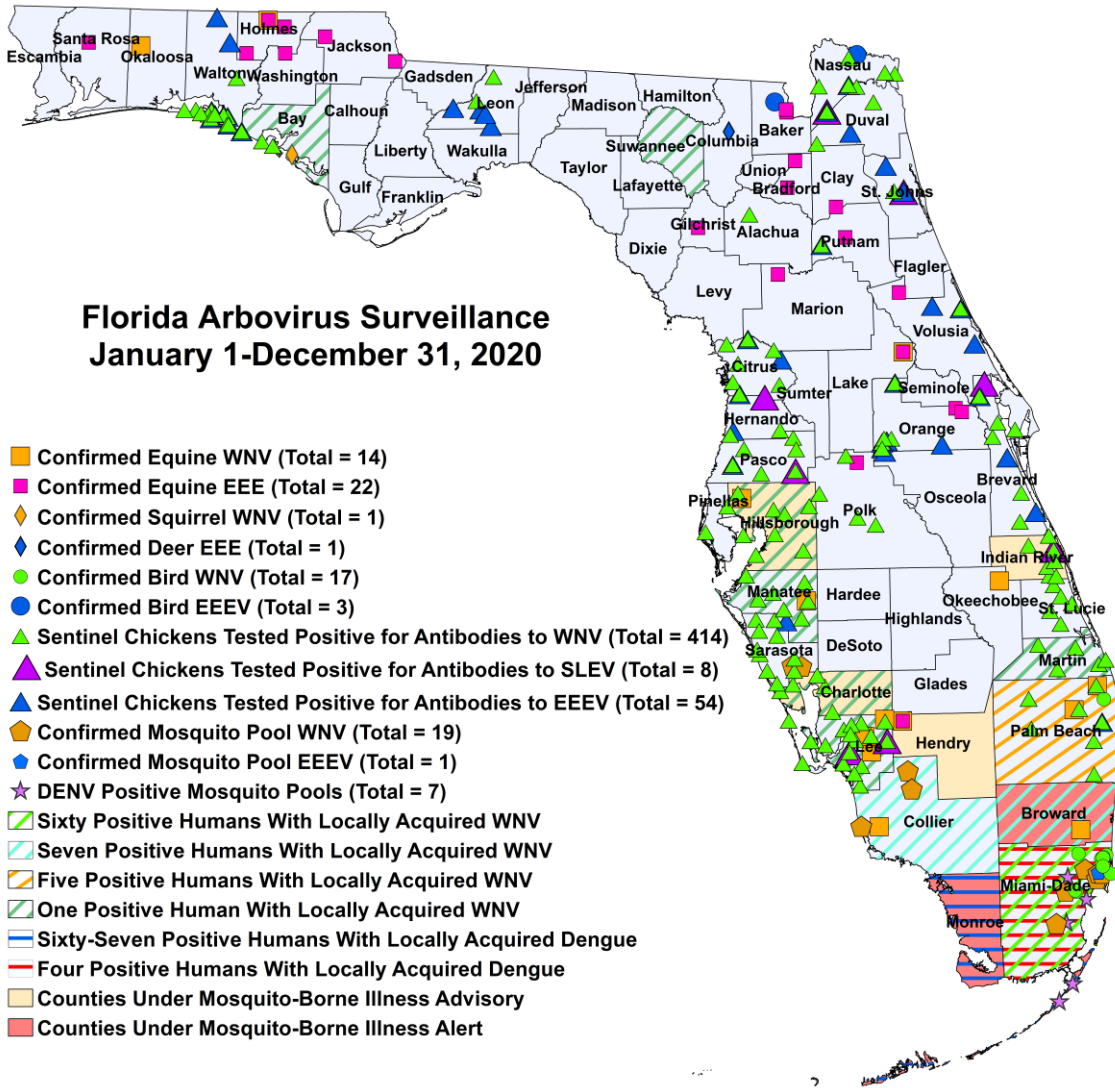
In 2021, five reports representing a total of five dead birds (2 raptors) were received from five of Florida's 67 counties.

2021

| County | Total Dead Birds | Crows | Jays | Raptors | Doves |
|----------|------------------|-------|------|---------|-------|
| Manatee | 1 | 0 | 0 | 0 | 0 |
| Okaloosa | 1 | 0 | 0 | 1 | 0 |
| Wakulla | 1 | 0 | 0 | 0 | 0 |

Maps





2020 Arbovirus Activity by County

| County | Arbovirus Activity |
|-----------|---|
| Alachua | WNV: 2 sentinels (10/22, 11/24) |
| Baker | EEEV: 2 horses (6/17, 7/5), 1 bird (5/7) |
| Bay | WNV: 1 human (August), 7 sentinels (8/17, 9/28), 1 squirrel (9/18) |
| Bradford | EEEV: 2 horses (7/18, 7/19) |
| Brevard | WNV: 7 sentinels (1/23, 1/24, 9/2, 10/8, 11/4, 12/4) EEEV: 3 sentinels (7/15, 7/16, 7/31) SLEV: 1 sentinel (11/6) |
| Broward | WNV: 6 humans (July, August, October), 1 asymptomatic blood donor (August), 1 horse (8/13) |
| Charlotte | WNV: 1 human (September), 9 sentinels (9/11, 10/9, 10/16, 10/23, 10/30, 11/20) |
| Citrus | WNV: 13 sentinels (1/8, 1/14, 1/21, 7/14, 10/13, 10/20, 12/1) EEEV: 3 sentinels (1/8, 3/2, 9/14) SLEV: 1 sentinel (11/17) |
| Clay | EEEV: 1 horse (7/11) |
| Collier | WNV: 7 humans (July, August, September, October), 1 horse (8/23), 4 mosquito pools (8/5, 9/1, 9/15) |
| Columbia | EEEV: 1 deer (6/24) |
| Duval | WNV: 8 sentinels (8/10, 8/31, 9/14, 10/5, 10/19) EEEV: 1 sentinel (9/21) |
| Gilchrist | EEEV: 1 horse (7/6) |
| Hendry | WNV: 1 horse (10/8) EEEV: 2 horses (10/4, 10/8) |

| | |
|---------------------|--|
| Hernando | WNV: 3 sentinels (10/19, 10/26) EEEV: 1 sentinel (1/21) |
| Hillsborough | WNV: 1 asymptomatic blood donor (October), 1 horse (11/1), 21 sentinels (1/6, 1/21, 1/29, 2/11, 2/18, 2/25, 9/8, 9/23, 10/28, 11/9, 12/2) |
| Holmes | WNV: 1 horse (6/7) EEEV: 4 horses (6/3, 6/7, 6/9, 7/13) |
| Indian River | WNV: 12 sentinels (1/2, 1/9, 1/10, 10/9, 10/16, 10/22, 10/23, 10/29, 11/24) SLEV: 1 sentinel (12/17) |
| Jackson | EEEV: 2 horses (6/27, 7/13) |
| Lake | WNV: 1 horse (9/14) EEEV: 1 horse (9/1) |
| Lee | WNV: 1 human (October), 3 horses (8/9, 8/14, 8/18), 135 sentinels (7/6, 7/20, 7/21, 7/27, 7/28, 8/3, 8/4, 8/10, 8/17, 8/18, 8/24, 8/25, 8/31, 9/1, 9/7, 9/8, 9/15, 9/21, 9/22, 9/28, 9/29, 10/5, 10/12, 10/13, 10/19, 10/20, 10/26, 10/27, 11/30) SLEV: 2 sentinels (9/28) |
| Leon | WNV: 4 sentinels (9/21, 10/12, 10/26) EEEV: 5 sentinels (7/20, 7/27, 8/4) |
| Manatee | WNV: 1 asymptomatic blood donor (September), 1 horse (8/10), 21 sentinels (1/8, 8/4, 8/12, 9/2, 9/30, 10/21, 10/28, 11/4, 11/10, 12/8) |
| Marion | EEEV: 1 horse (10/27) |
| Martin | WNV: 1 human (October), 18 sentinels (7/17, 7/24, 8/7, 8/21, 8/28, 10/16, 10/23, 10/30, 12/4) |
| Miami-Dade | WNV: 27 humans (April, June, July, August, September), 33 asymptomatic blood donors (May, June, July, August), 15 birds (5/20, 6/15, 6/18, 6/24, 6/25, 6/26, 7/10, 7/11, 7/12, 7/13, 7/20), 13 mosquito pools (6/9, 6/16, 6/23, 6/30, 7/14, 8/20) EEEV: 1 mosquito pool (1/7) Dengue: 4 humans (March, August, September), 4 mosquito pools (7/30, 8/28) |
| Monroe | Dengue: 67 humans** (February, March, April, May, June, July, August), 3 mosquito pools (6/23, 6/27, 7/29) |
| Nassau | WNV: 17 sentinels (7/25, 8/15, 8/22, 8/29, 10/3, 10/17, 10/24, 11/7, 11/21) EEEV: 2 birds (6/16, 7/4), 4 sentinels (7/25, 11/14, 11/21) SLEV: 1 sentinel (11/7) |
| Okaloosa | WNV: 1 horse (10/20) |
| Okeechobee | WNV: 1 horse (10/22) |
| Orange | WNV: 6 sentinels (1/6, 8/17, 11/23, 11/30) EEEV: 2 horses (3/25, 11/16), 11 sentinels (1/13, 1/27, 1/28, 2/24, 3/2, 8/3, 11/9) |
| Palm Beach | WNV: 5 humans (June, July, August), 2 horses (8/4, 9/5), 25 sentinels (1/20, 8/3, 8/17, 8/24, 8/31, 10/5, 10/13, 10/20, 10/26, 11/30, 12/7, 12/15), 2 birds (6/19) EEEV: 1 sentinel (8/3) |
| Pasco | WNV: 15 sentinels (1/7, 10/13, 10/19, 10/20, 10/27, 11/2, 11/3, 11/6, 11/9, 11/17, 12/1) EEEV: 1 sentinel (8/31) SLEV: 1 sentinel (12/23) |
| Pinellas | WNV: 11 sentinels (8/24, 10/12, 10/26, 10/27, 10/30, 11/2, 11/6, 11/9) |
| Polk | WNV: 5 sentinels (10/2, 10/9, 10/16, 11/9) EEEV: 1 horse (3/29) |
| Putnam | WNV: 2 sentinels (7/21, 8/17) EEEV: 1 horse (9/17), 1 sentinel (8/17) |
| Santa Rosa | EEEV: 1 horse (7/20) |
| Sarasota | WNV: 31 sentinels (8/14, 9/15, 10/13, 10/16, 10/23, 10/27, 10/30, 11/6, 11/9, 11/16, 11/20, 11/24), 2 mosquito pools (9/22, 10/20) EEEV: 1 sentinel (7/28) |
| St. Johns | WNV: 1 sentinel (11/30) EEEV: 3 sentinels (8/4, 8/10, 11/30) SLEV: 1 sentinel (11/9) |
| St. Lucie | WNV: 27 sentinels (7/23, 8/6, 8/13, 8/27, 10/1, 10/15, 10/22, 11/5, 11/23, 12/3) |
| Suwannee | WNV: 1 human (October) |
| Volusia | WNV: 1 sentinel (5/4) EEEV: 1 horse (1/24), 4 sentinels (2/24, 5/18, 5/30, 10/5) |

Walton

WNV: 20 sentinels (7/27, 8/17, 8/24, 8/31, 9/14, 9/28, 10/12, 10/19, 11/2, 11/9, 11/30, 12/7)
EEEV: 15 sentinels (6/22, 7/6, 7/27, 8/3, 8/10, 8/17, 9/21, 11/2, 11/9, 11/16, 11/17, 11/30)

Acknowledgements and Data Sources

Contributors: Andrea Morrison, PhD, MSPH, Devin Rowe, MS, Catherine McDermott, MPH, MHS, and Danielle Stanek, DVM, DOH Bureau of Epidemiology; Lea Heberlein-Larson, DrPH; Alexis LaCruce, PhD, MS; Maribel Castaneda, and Valerie Mock, BS; DOH Bureau of Public Health Laboratories; Carina Blackmore, DVM, PhD, DOH Division of Disease Control and Health Protection.

For more surveillance information, please see the DOH website at: www.floridahealth.gov/diseases-and-conditions/mosquito-borne-diseases/surveillance.html

For arbovirus surveillance information for the United States, please see the Centers for Disease Control and Prevention website at: www.cdc.gov/ncidod/dvbid/westnile/surv&control.htm

Case tallies included in the weekly Florida arbovirus surveillance report include confirmed and probable cases for EEE, WNV infection, SLE, dengue, chikungunya, and malaria by date of onset. Suspect cases are not included. Activity is mapped by county of exposure rather than county of residence. Case definitions being used in Florida are consistent with national criteria provided by the Council of State and Territorial Epidemiologists (CSTE) and may be viewed at: www.floridahealth.gov/diseases-and-conditions/disease-reporting-and-management/disease-reporting-and-surveillance/index.html. Case tallies reported by CDC do not include suspect cases and cases are reported by patient state of residence rather than where the exposure occurred. Data is provided by county health departments, Department of Health Bureau of Public Health Laboratories, Department of Agriculture and Consumer Services, mosquito control agencies, Florida Fish and Wildlife Conservation Commission, medical providers and veterinarians. Equine cases are provided by the Department of Agriculture and Consumer Services.

**Multiple cases were identified through retrospective antibody testing. Although these persons reported a dengue-like illness, dengue fever symptoms are non-specific and some infections may be asymptomatic. Therefore, we cannot be certain that the reported illness was definitively when dengue infection occurred. Per CDC, dengue fever IgM antibodies may be detected for approximately 12 weeks after infection but may persist longer.