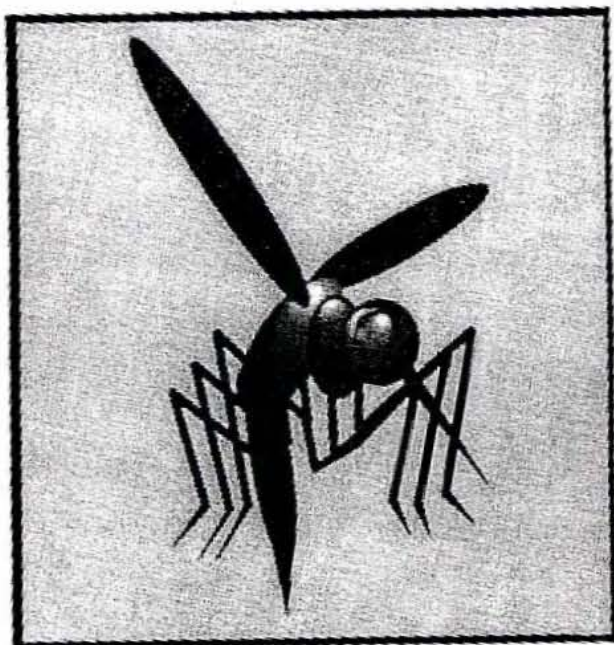


MOSQUITO ACTIVITY BOOK

MOST WANTED



MENACE TO SOCIETY

A Public Education Program
by Escambia County Health Department
and Escambia County Mosquito Management

The Mosquito

Mosquitoes are aquatic insects with a head, thorax, abdomen, two wings and six legs. They are called aquatic because they lay their eggs and grow up in water. The only time mosquitoes do not live in water is during the adult stage of their life cycle. The adult mosquitoes are the ones that cause all the problems because they bite!

Actually, only female mosquitoes bite. Both male and female adults feed on plant nectar, but the female also needs the protein in blood to develop her eggs. The mosquito uses her antennae to track down carbon monoxide that is expelled in a potential victim's breath. When she finds a victim, the mosquito pokes her proboscis, or mouth, under the skin and injects her own saliva into the victim to keep the blood from clotting. After the blood is flowing, she starts to drink. Mosquito bites itch because we are allergic to the saliva.

Many species of mosquitoes lay their eggs in containers of standing water, such as buckets or wading pools. You can reduce the risk of mosquito bites and disease by eliminating these habitats around your home. If you can reduce the number of larvae, there won't be as many mosquitoes to grow up and bite you!

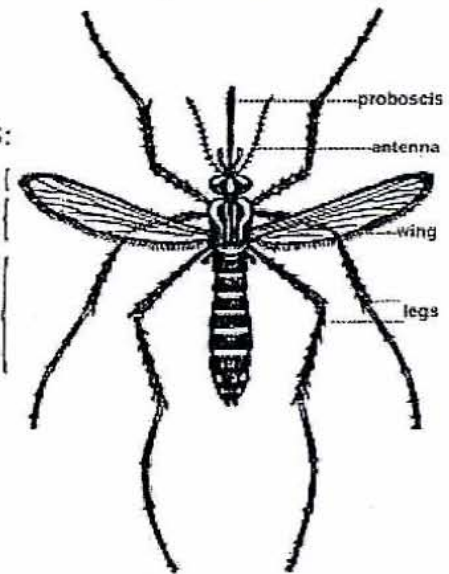
Mosquito Anatomy

BODY SEGMENTS:

HEAD

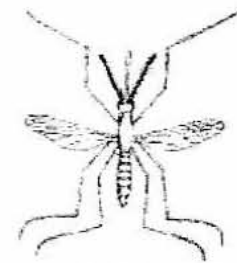
THORAX

ABDOMEN

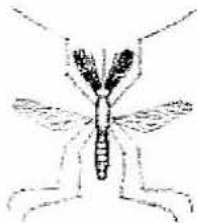


Metamorphosis:

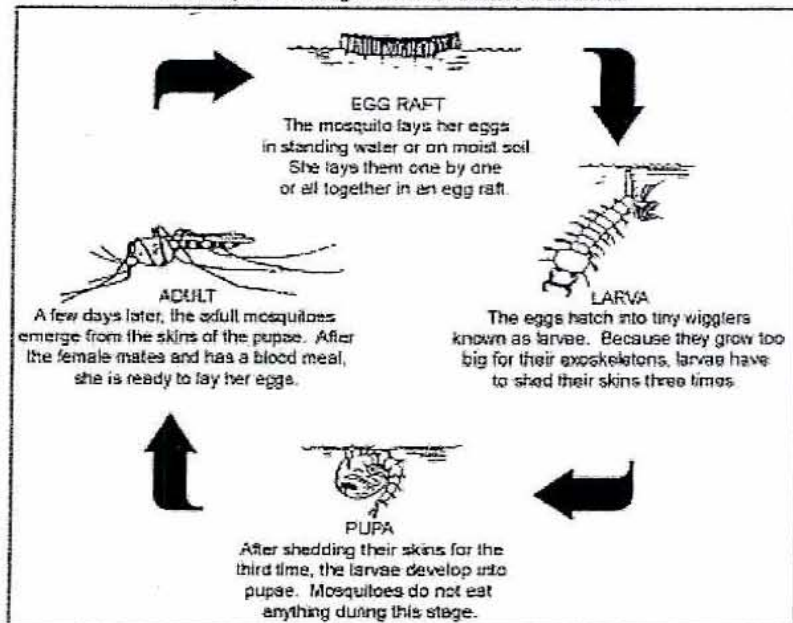
a developmental change in form or structure of an animal



Female Mosquito



Male Mosquito



See if you can unscramble
these words about
mosquitoes!

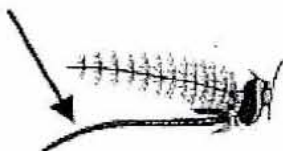
Hint: There is a picture of each word somewhere on this page.



adeh



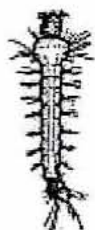
mabnedo



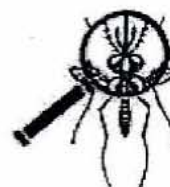
tladu



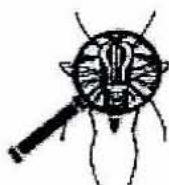
grageft



toxhar



varla



crososbip



uapp

Mosquito-Borne Diseases

Mosquitoes are more than just a nuisance. They carry diseases as well. Some of the most common diseases borne by mosquitoes are the West Nile virus, Dengue, Malaria, Yellow Fever, St. Louis Encephalitis and Eastern Equine Encephalitis. Encephalitis is the swelling of the brain that is caused by some of these diseases. One of the most deadly mosquito-borne disease in the world is malaria, which kills up to three million people each year. Mosquitoes can also transmit heart worm to dogs and cats.

Mosquitoes can spread these diseases when they feed on an infected animal or human, and then bite a healthy animal or human. For example, when a mosquito consumes the blood of a bird infected with the West Nile virus, the virus multiplies within the mosquito's stomach and moves throughout its body. Then, when the mosquito bites another animal or human, the disease is transmitted by the saliva the mosquito injects under the victim's skin.

Using the list below, find and circle all the names of mosquito-borne diseases hidden in the puzzle. The words can be forward, backward, up, down or diagonal.



ENCEPHALITIS

DENGUE

EASTERN EQUINE

WEST NILE

MALARIA

HEART WORM


























ST LOUIS

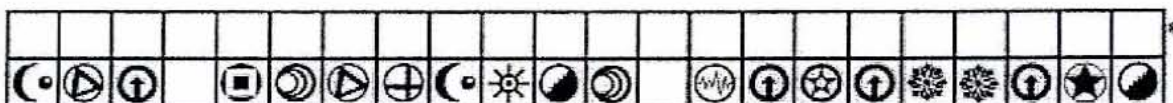
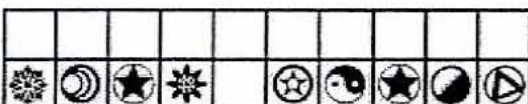
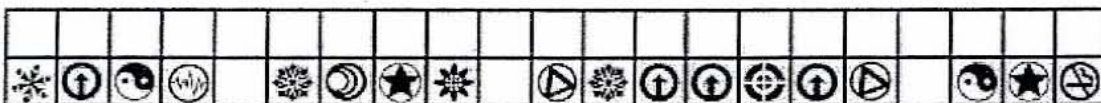
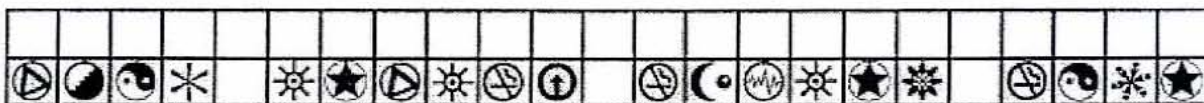
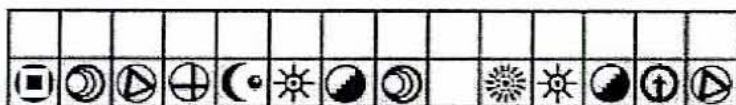
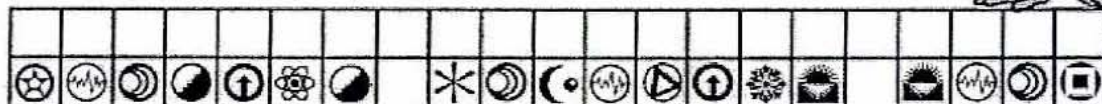
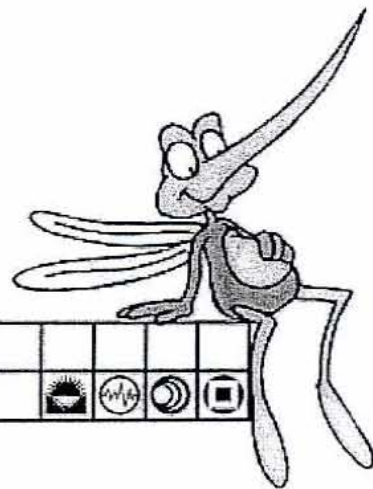
YELLOW FEVER

Solve the Secret Code

A message about mosquitoes is hidden in the lines below.
Use the key to solve the code and reveal the message.



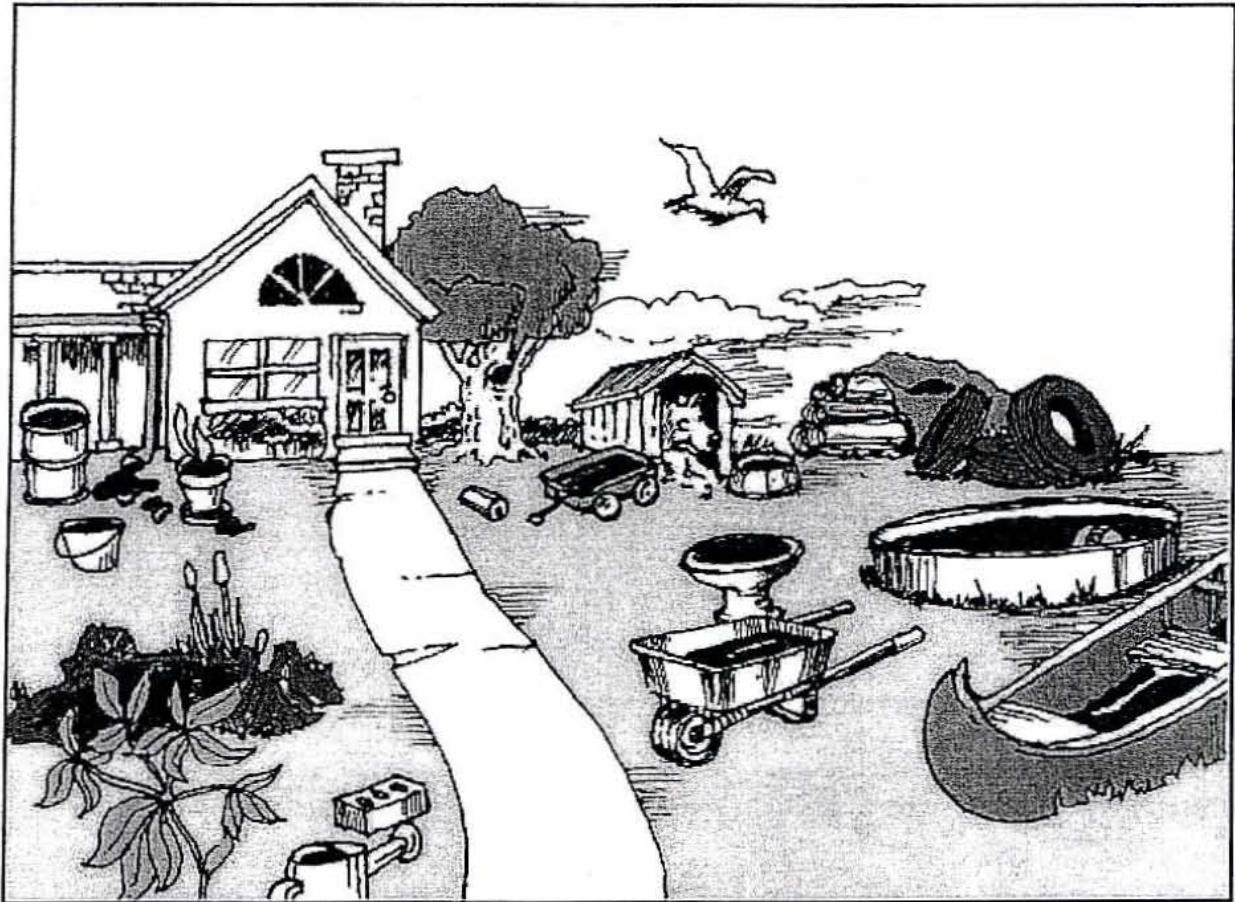
A	B	C	D	E	F	G	H	I	J	K	L	M
												
N	O	P	Q	R	S	T	U	V	W	X	Y	Z
												



* Ask your doctor what kind of mosquito repellent is right for you.

NO MOSQUITO LARVAE = NO MOSQUITO BITES

One of the best ways to reduce the number of mosquitoes around your house is to make sure they do not have any containers of standing water in which to lay their eggs and grow. There are all sorts of places in the picture below where mosquito larvae can live. Can you find and circle all 18 locations? Remember, mosquito larvae can live in *anything* that contains or collects standing water.



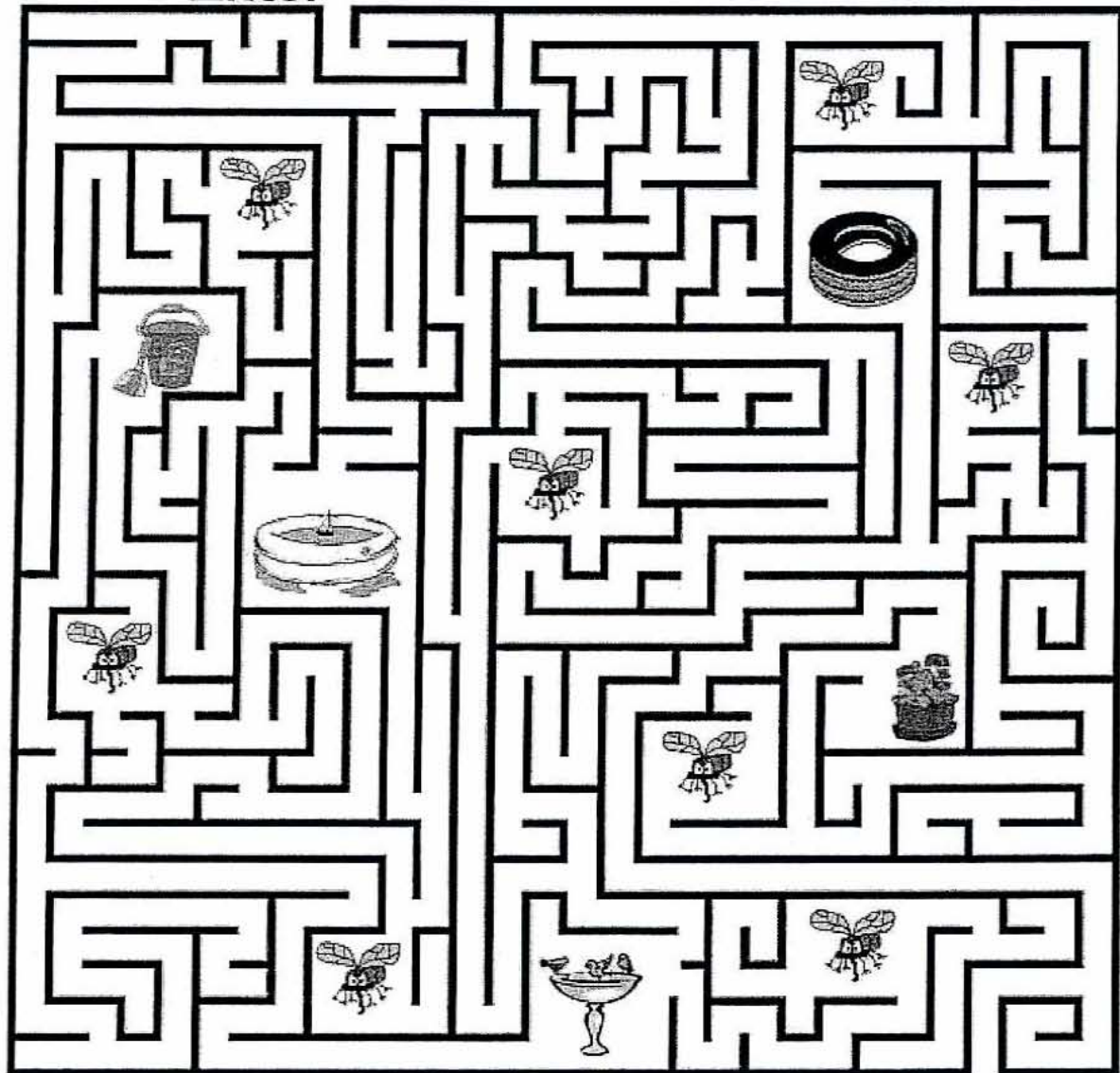
Answers: rain gutter, oil drum, bucket, puddle at the base of gutter, plant saucer, pond, watering can, holes in the brick, empty soda can, tree hole, wagon, water dish, bird bath, tarp over wood pile, wheel barrow, wading pool, canoe, tires.

Help Anna Through the Maze



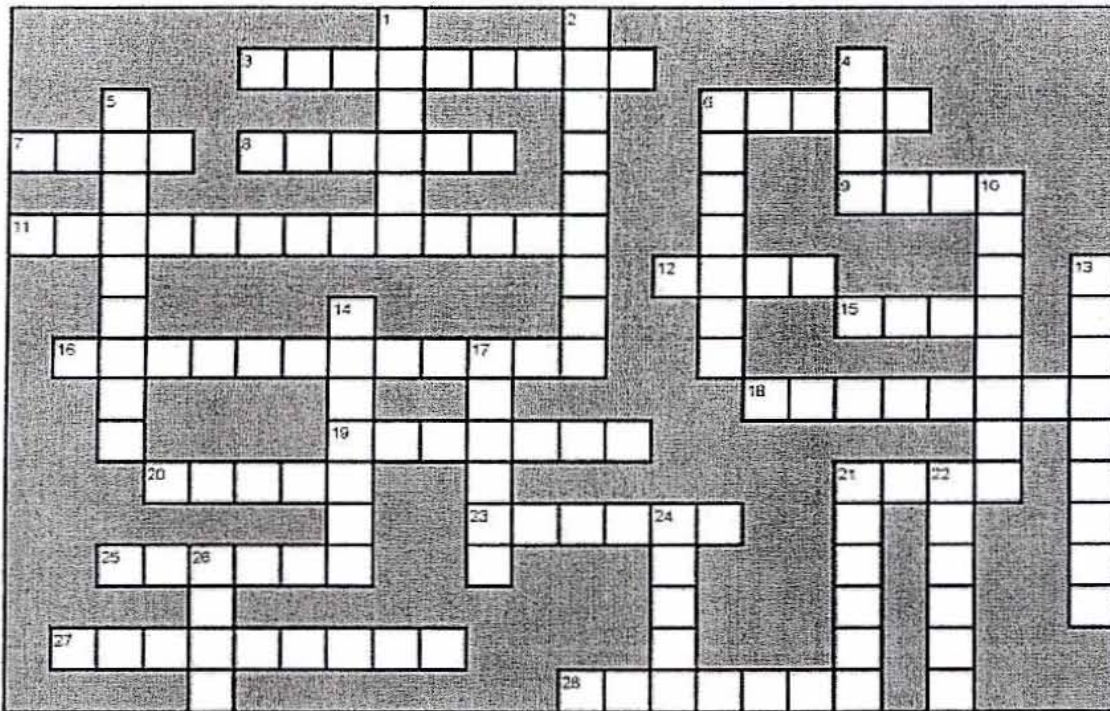
Anna needs to dump out all the containers of standing water where mosquito larvae can grow. Can you help her to get to each container without getting bit by a mosquito?

Enter



Exit

CROSSWORD PUZZLE



ACROSS

3. Mosquitoes can give dogs _____ disease.
6. Mosquitoes are called _____ during the third stage of their development.
7. To keep mosquitoes from growing in your _____, you should replace the water weekly.
8. Only _____ mosquitoes drink blood in order to reproduce.
9. Mosquitoes start their lives as _____.
11. The process of the pupa turning into an adult mosquito is called _____.
12. The first segment of the mosquito's body is called the _____.
15. Mosquitoes are most active during dusk and _____.
16. Many mosquito borne diseases cause a swelling of the brain called _____.
18. Mosquitoes can transmit the _____ virus by feeding on an infected bird and then biting a human.
19. The third segment of a mosquito's body is called the _____.
20. Mosquito larvae and pupae live in _____.
21. To protect yourself from mosquito bites, you should wear _____ sleeves and pants.
23. Mosquitoes are called _____ during the fourth and final stage of their development.
25. Mosquitoes inject you with their _____ so your blood will not clot while they feed.

27. The _____ is a natural predator of the mosquito.
28. A mosquito bite not only makes you itch, but it could also give you a _____.

DOWN

1. Mosquitoes are attracted to the carbon dioxide in your _____.
2. The part of the mosquito that it pokes into your skin is called the _____.
4. The _____ mosquito does not bite.
5. Mosquitoes can grow in any kind of _____ that holds water.
6. Mosquitoes need the _____ in your blood to develop their eggs.
10. Mosquitoes lay their eggs in _____ water.
14. Each year, _____ causes up to three million deaths worldwide.
13. Wearing mosquito _____ can keep the mosquitoes from landing on you.
17. The second segment of the mosquito's body is called the _____.
21. Mosquitoes are called _____ during the second stage of their life cycle.
22. Male mosquitoes feed on plant _____.
24. Mosquitoes can grow in old _____ that have been left out in the rain.
26. Mosquitoes have six _____.



WORD BANK

ABDOMEN	MALARIA
ADULTS	MALE
BREATH	METAMORPHOSIS
CONTAINER	NECTAR
DAWN	POOL
DISEASE	PROBOSCIS
DRAGONFLY	PROTEIN
EGGS	PUPAE
ENCEPHALITIS	REPELLENT
FEMALE	SALIVA
HEAD	STANDING
HEARTWORM	THORAX
LARVAE	TIRES
LEGS	WATER
LONG	WEST NILE

Home Checklist Assignment

Instructions: Listed below are some places where you might find mosquito larvae in your yard. With a parent, look for each item in the list and check it for water. If you find any water, dump it out so larvae cannot grow there. Put a check in the correct box for each item, and sign the form at the bottom when you are done. Your parent/guardian signs too. If you turn in a complete and signed form to your teacher, you will get a PRIZE!

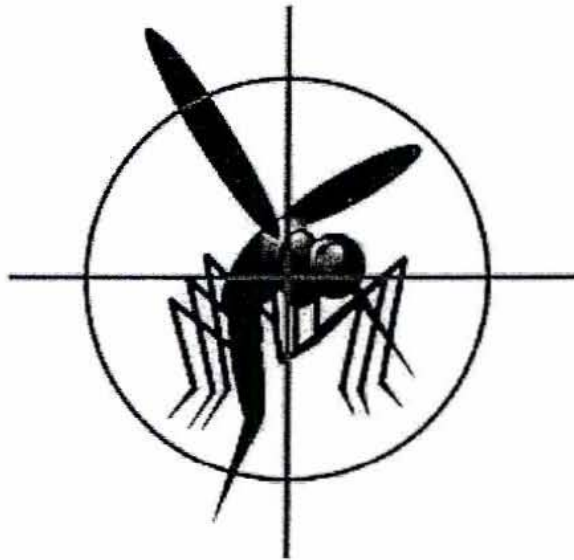
NOTE TO PARENTS: Please help your child complete this assignment. Your child is learning how to protect her or himself from mosquito bites and the diseases they spread. One of the most effective ways to cut down on mosquitoes is to eliminate all of the places around your home where mosquitoes can lay their eggs and grow. Any place that can hold standing water should be checked at least once a week and dumped out.

	We found these:	We found water in and emptied these:	We did not find any of these:
bird baths			
boats			
buckets			
cans, bottles or jars			
flower pots and saucers			
ornamental ponds			
pet water dishes			
rain barrels			
tarps			
tires			
toys			
tree holes			
wading pools			
wheel barrows			
other _____			
other _____			

Student: _____ Parent/Guardian: _____

Escambia County Health Department
(850) 595-6700 or
<http://www.doh.state.fl.us/chdescambia/>

Escambia County Mosquito Management
(850) 595-3147 or
http://bcc-as.escambia/mosquito_control/main.cfm



Adapted from:
Activity Book by
Rebeka Gipson King
Community Education Coordinator
Leon County Mosquito Control
Copyright 2003