

Florida Arbovirus Surveillance

Week 23: June 6-12, 2010

Arbovirus surveillance in Florida includes endemic viruses West Nile virus (WNV), Eastern equine encephalitis virus (EEEV), St. Louis encephalitis virus (SLEV), and Highlands J virus (HJV) and exotic viruses such as Dengue virus (DENV) and California encephalitis group viruses (CEV). During the period June 6-12, 2010, the following arboviral activity was recorded in Florida:

DENV activity: One locally-acquired case of dengue was reported this week in Key West. In 2010, there have been two locally-acquired cases reported from Key West (Monroe County).

EEEV activity: One sentinel chicken from Volusia County tested positive for antibodies to EEEV and one mosquito pool from Flagler County tested positive for EEEV. In 2010, positive samples from six horses, 19 sentinel chickens, 13 live wild birds, and two mosquito pools have been received from 13 of Florida's 67 counties.

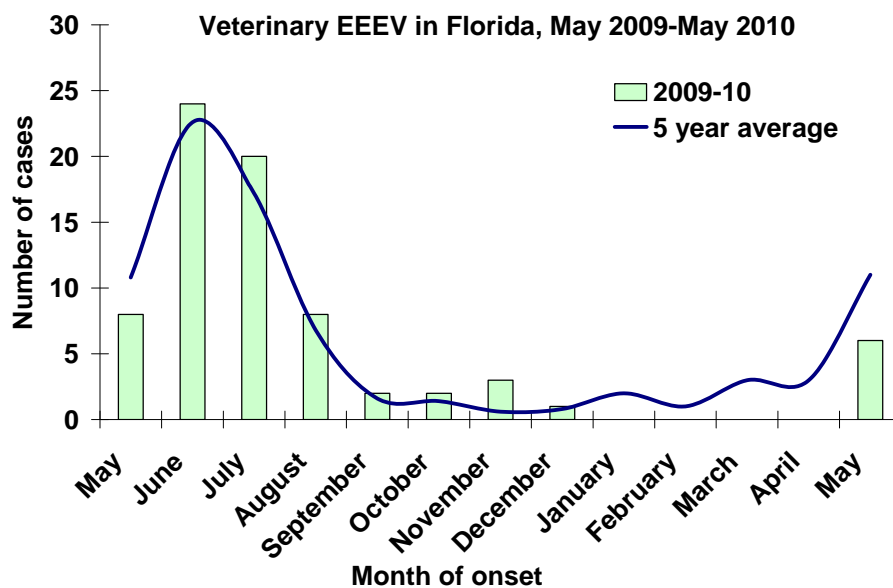
WNV activity: No WNV activity was reported this week. In 2010, positive samples from 40 sentinel chickens have been received from five counties.

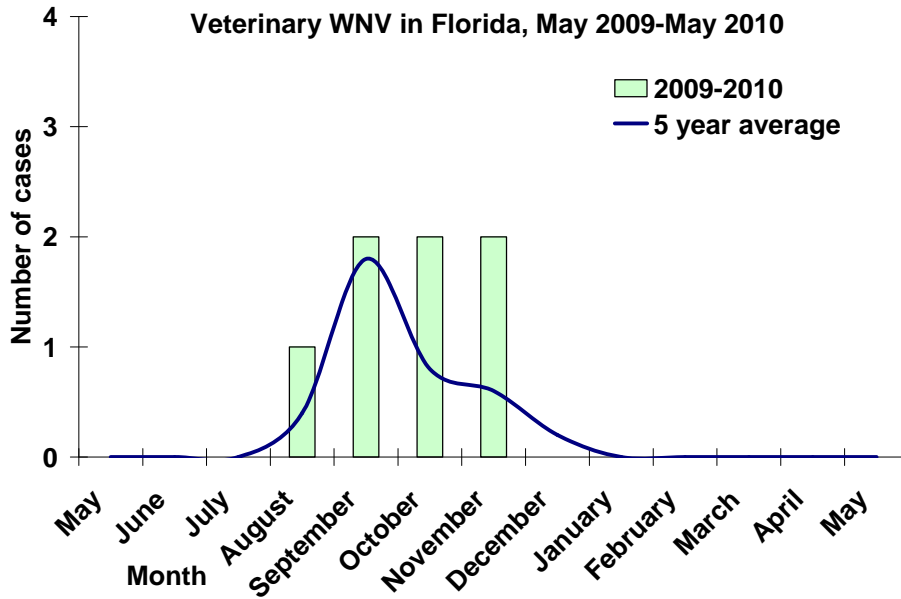
HJV activity: No HJV activity was reported this week. In 2010, positive samples from ten sentinel chickens have been received from seven counties.

Advisories/Alerts: Monroe County is currently under a mosquito-borne disease advisory. No other counties are currently under mosquito-borne disease advisory or alert.

Veterinary Cases

No positive horses were reported this week. In 2010, six EEEV-positive horses have been reported from six counties.

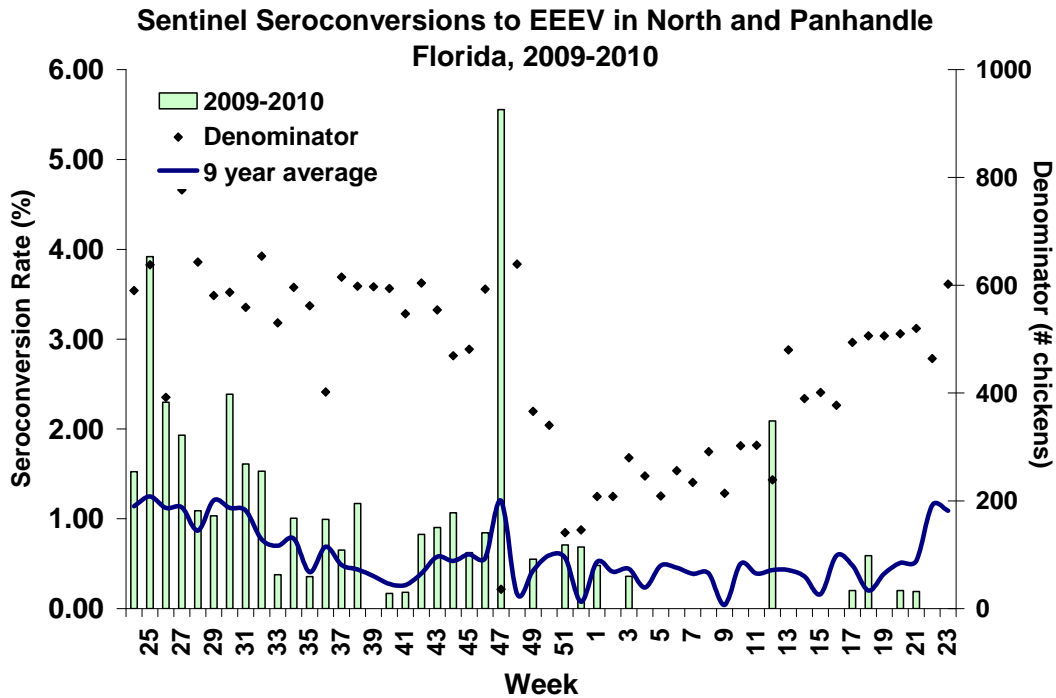


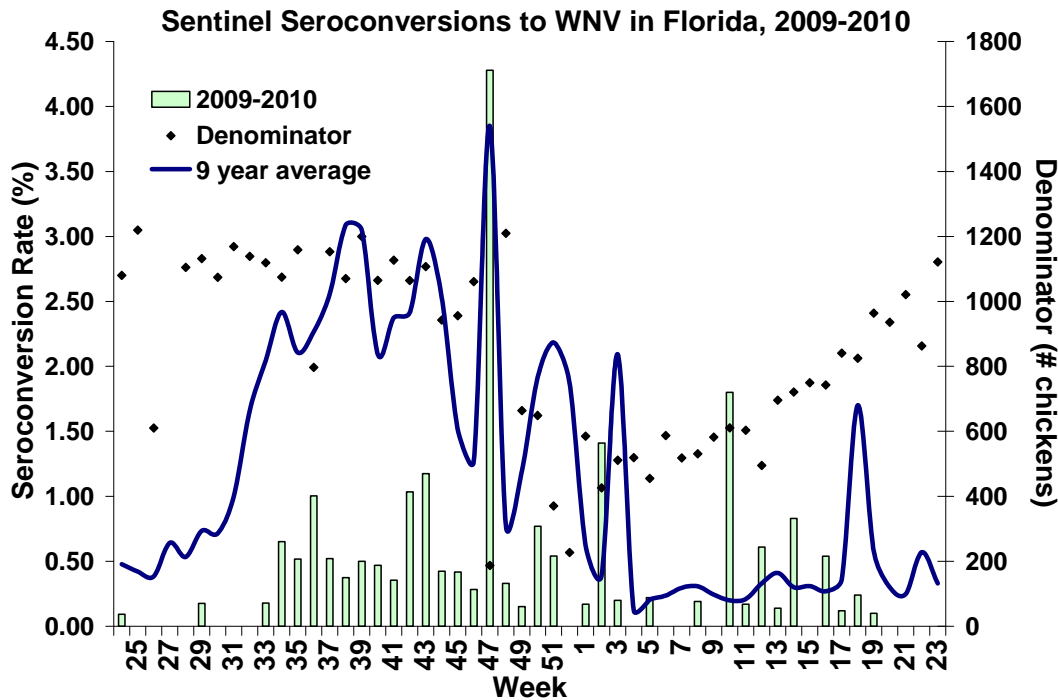


Sentinel Chickens

There was one seroconversion to EEEV in a sentinel chicken from Volusia County. Seroconversion rates are calculated by week and include previously reported results.

County	Collection Date	Seroconversion Rates (%)				County Totals	
		SLEV	WNV	EEEV	HJV	Week	YTD
Volusia	05/24/2010		5.0			1 EEE	1 EEE, 1 HJV





Live Wild Birds

No positive live wild birds were reported this week.

Mosquito Pools

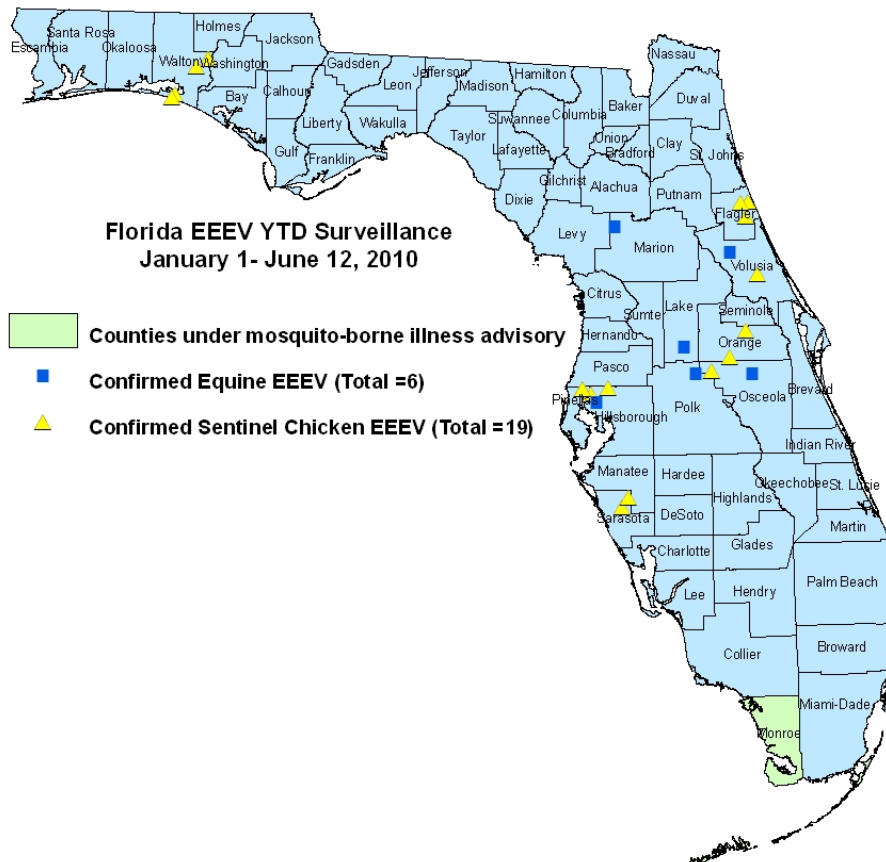
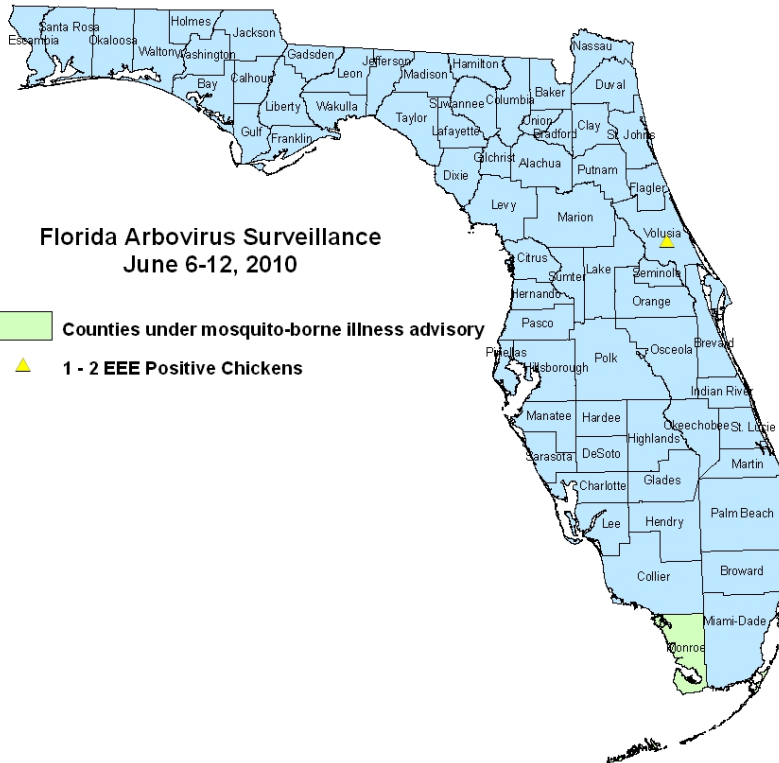
EEEV was isolated from one mosquito pool (*Culiseta melanura*) collected in Flagler County.

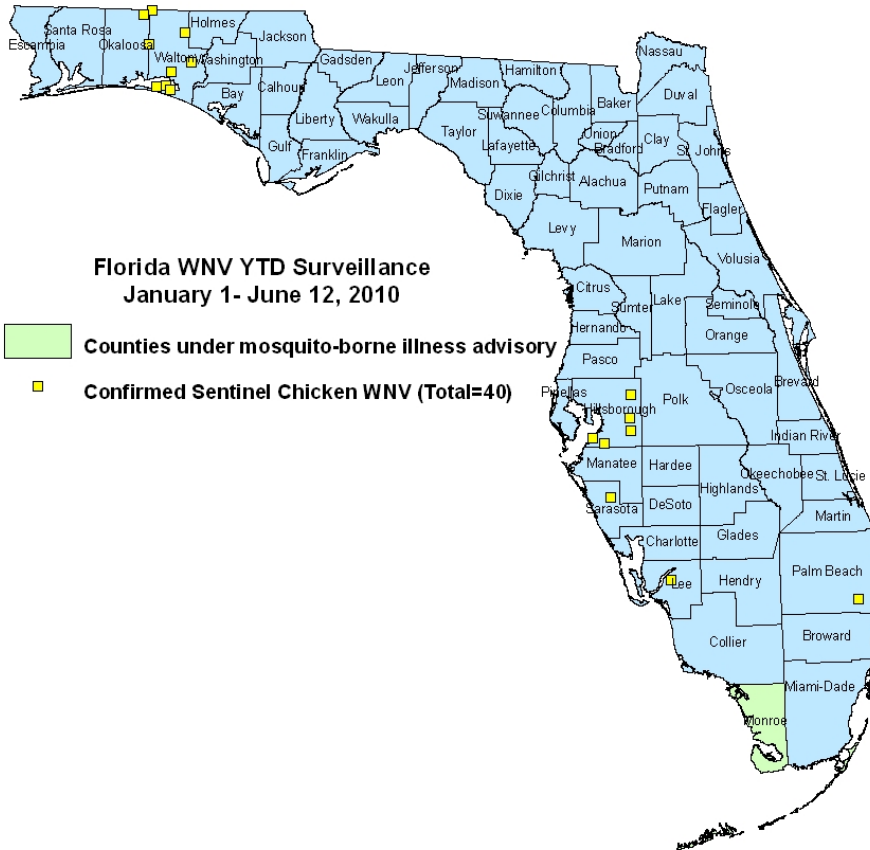
County	Collection Date	Result	Species	County YTD
Flagler	05/11/2010	EEEV	<i>Culiseta melanura</i>	2 EEE

Dead Birds

The Fish and Wildlife Conservation Commission (FWC) collects reports of dead birds, which can be an indication of arbovirus circulation in an area. This week, five reports representing 11 dead birds were received from five counties. One was identified as a raptor; none were identified as crows or jays. In 2010, 134 reports representing a total of 420 dead birds (12 crows, 9 jays, 23 raptors, 376 others) have been received from 39 of Florida's 67 counties. Please note that FWC collects reports of birds that have died from a variety of causes, not only arboviruses. Dead birds should be reported to www.myfwc.com/bird/.

Maps





YTD Arbovirus Activity by County

County	Arbovirus Activity
Citrus	HJV: 1 sentinel (5/17)
Flagler	EEE : 3 sentinels (3/22, 4/26, 5/3) ; 2 mosquito pool (<i>Culiseta melanura</i> 4/27, 5/11)
Hillsborough	WNV : 13 sentinels (1/12, 1/19, 2/22, 3/9, 3/22, 4/20, 5/11) EEE: 1horse (5/29); 2 sentinels (5/4, 5/18)
Lake	EEE: 1 horse (5/20)
Lee	WNV: 2 sentinels (3/30, 4/20)
Marion	EEE: 1 horse (5/7)
Monroe	DENV: 2 humans (4/5, 5/15)
Okaloosa	EEE : 6 live wild birds (1 house sparrow 1/4, 5 blue jay 1/27, 4/19, 4/21, 4/26)
Orange	EEE : 3 sentinels (1/7, 5/3, 5/17) HJV : 1 sentinel (5/17)
Osceola	EEE: 1 donkey (5/15)
Palm Beach	WNV: 1 sentinel (3/15)
Pinellas	EEE: 2 sentinels (5/24) HJV: 1 sentinel (4/26)
Polk	EEE: 1 horse (4/28)
Putnam	HJV: 1 sentinel (5/14)
St. Johns	HJV: 2 sentinels (4/26, 5/3)
Santa Rosa	EEE: 8 live wild birds (8 blue jays 2/2, 3/22, 4/13, 4/19, 5/11, 5/18)
Sarasota	EEE: 2 sentinels (1/5, 1/11) WNV : 1 sentinel (1/8)
Volusia	EEE : 1 horse (5/7) ; 1 sentinel (5/24) HJV : 1 sentinel (5/17)
Walton	EEE : 6 sentinels (1/19, 3/22, 5/3) WNV : 23 sentinels (1/14, 2/4, 3/8, 3/12, 3/22, 4/7, 4/8, 4/23, 4/30, 5/5) HJV : 3 sentinels (3/22, 5/17)

Acknowledgements and Data Sources

Contributors: Elizabeth Radke, MPH, Danielle Stanek, DVM, and Carina Blackmore, DVM, PhD.

For more surveillance information, please see the DOH website at:
<http://www.doh.state.fl.us/Environment/medicine/arboviral/index.html>

Data is provided by county health departments, Department of Health Laboratories, Department of Agriculture and Consumer Services, mosquito control agencies, Florida Fish and Wildlife Conservation Commission, medical providers and veterinarians. Equine cases are determined by the Department of Agriculture and Consumer Services. Wild captured bird information is provided by the John A. Mulrennan Public Health Entomology Research and Education Center.