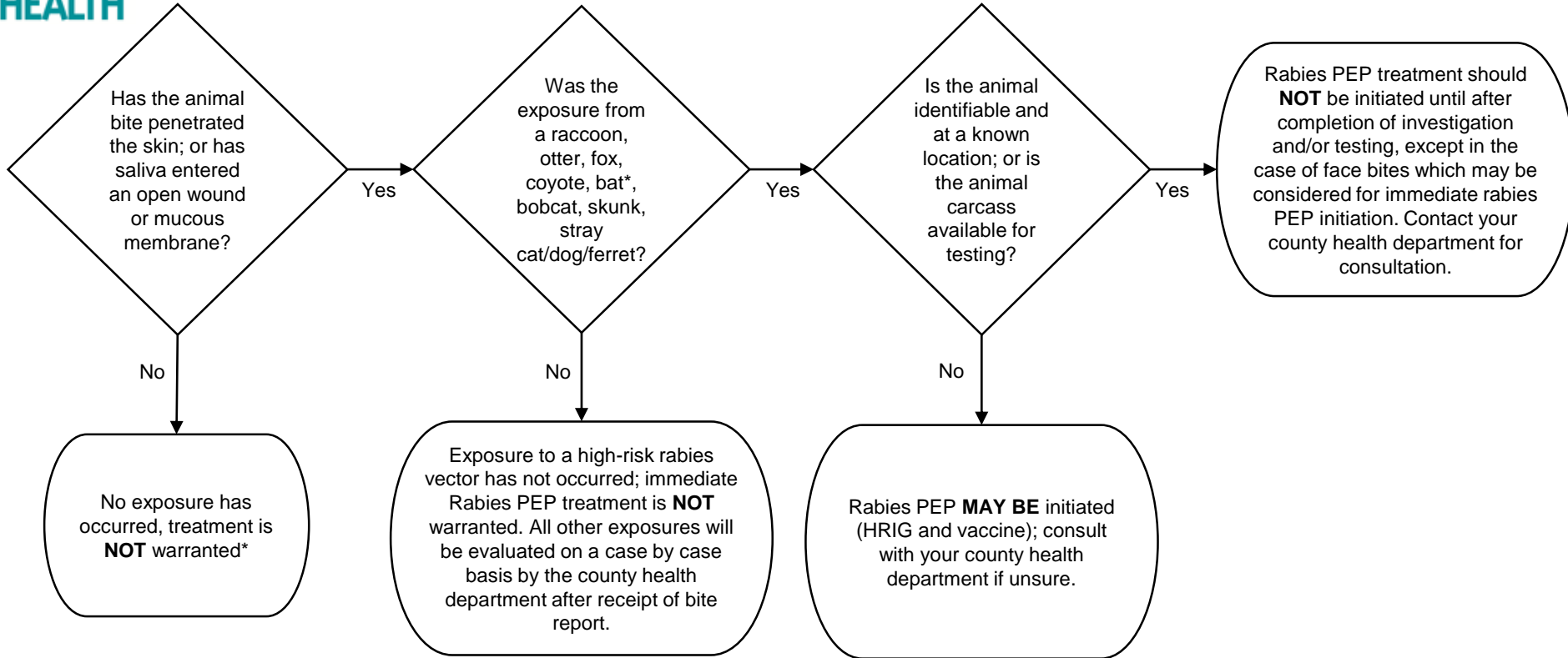




Decision Tree for Health Care Providers



* Bat bites may be difficult to see. Please contact your county health department for consultation on suspected bat bite exposures.

Additional notes:

- Wound care should be given according to standard practices whether post-exposure prophylaxis (PEP) is recommended or not.
- All possible rabies exposures must be reported as per Florida Administrative Code Chapter 64D-3 to your local county health department, regardless of treatment provided.
- Rabies PEP: For persons NOT previously immunized against rabies, human rabies immune globulin (HRIG) is given once (20 IU/kg) according to labeled directions. Four 1.0 ml doses of rabies vaccine should be administered IM, in the deltoid, one each on day 0, 3, 7, and 14. For persons previously immunized against rabies, HRIG should not be given and only two doses of vaccine administered IM, one on day 0 and one on day 3.

For more information, consult the Rabies Prevention and Control in Florida guidance documents.

www.floridahealth.gov/diseases-and-conditions/rabies/index.html