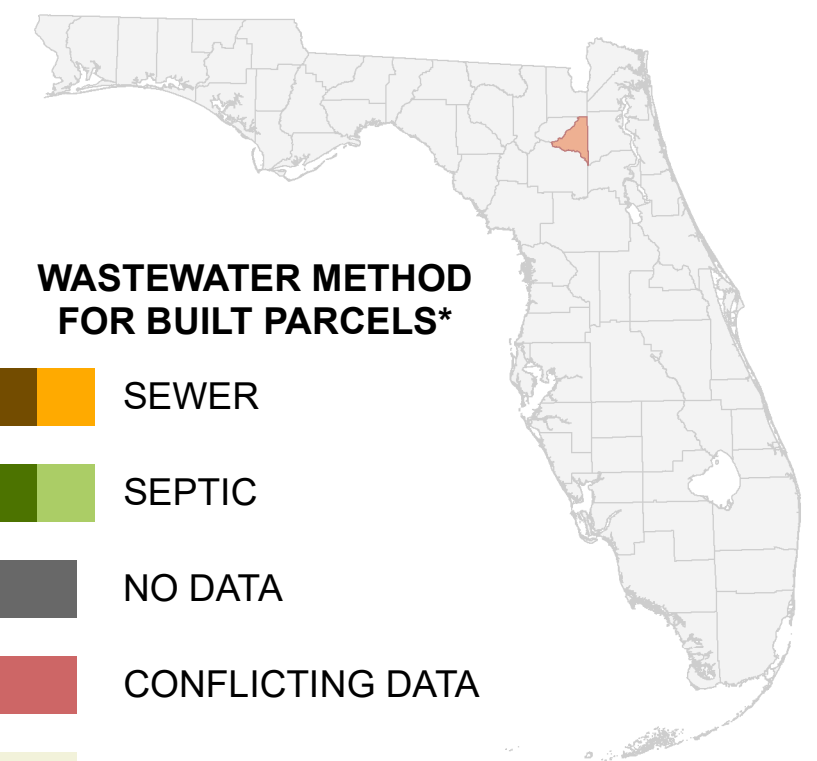
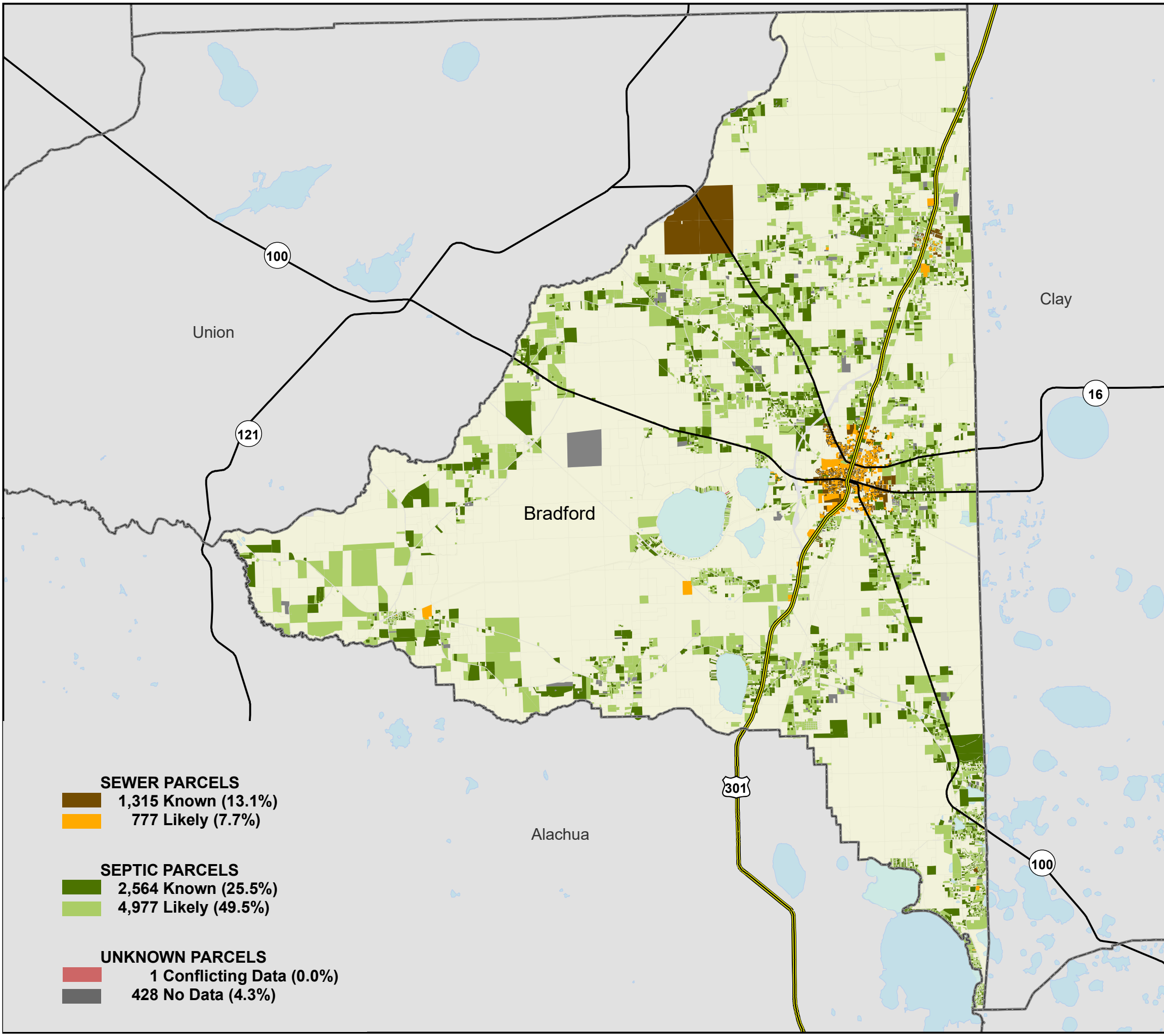


# Florida Water Management Inventory

## Bradford County Wastewater 2022



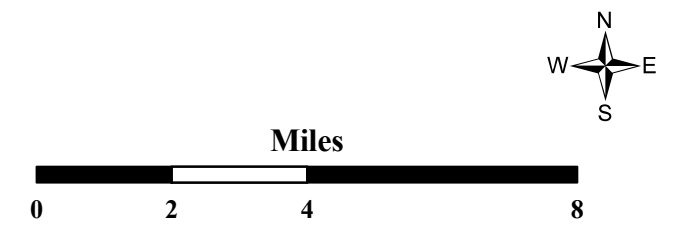
### WASTEWATER METHOD FOR BUILT PARCELS\*

- SEWER
- SEPTIC
- NO DATA
- CONFLICTING DATA
- NOT BUILT

US Highway     State Road

\* Includes parcels with unknown Built status. Percentages do not include parcels where wastewater is not applicable.

<b>SEWER PARCELS</b>	
	1,315 Known (13.1%)
	777 Likely (7.7%)
<b>SEPTIC PARCELS</b>	
	2,564 Known (25.5%)
	4,977 Likely (49.5%)
<b>UNKNOWN PARCELS</b>	
	1 Conflicting Data (0.0%)
	428 No Data (4.3%)



This map is based on sources of varied accuracy and scale provided by multiple organizations. FDOH assumes no liability for the use of this map and associated data.



26Apr2022