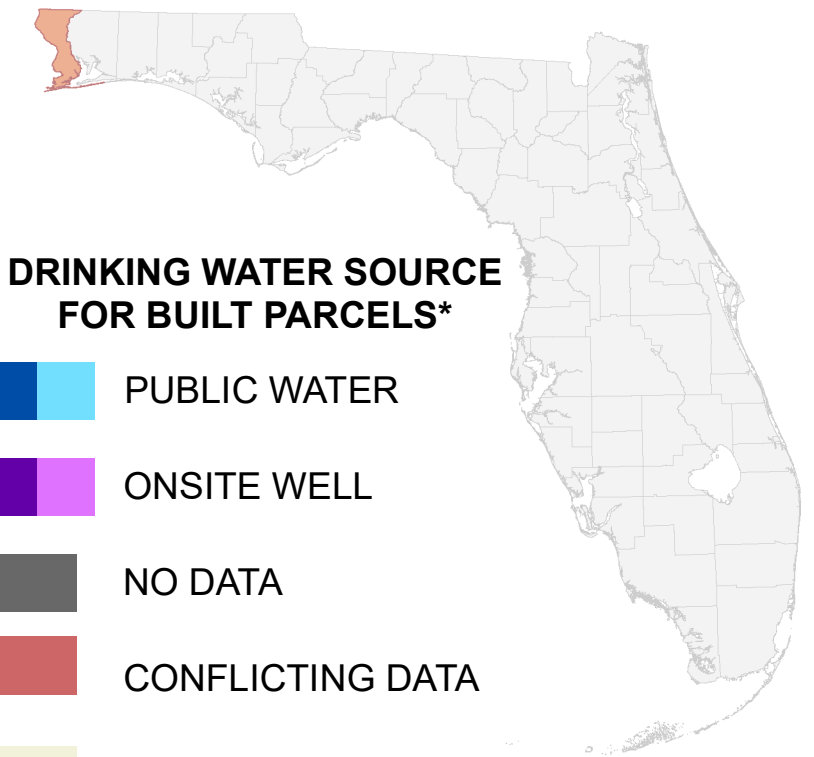


Florida Water Management Inventory

Escambia County Drinking Water 2021



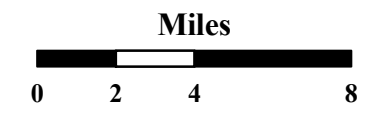
PUBLIC WATER PARCELS	
■	55,432 Known (42.1%)
■	37,854 Likely (28.7%)
PRIVATE WELL PARCELS	
■	411 Known (0.3%)
■	38 Likely (0%)
UNKNOWN PARCELS	
■	129 Conflicting Data (0.1%)
■	37,904 No Data (28.8%)

DRINKING WATER SOURCE FOR BUILT PARCELS*

■	■	PUBLIC WATER
■	■	ONSITE WELL
■		NO DATA
■		CONFLICTING DATA
■		NOT BUILT

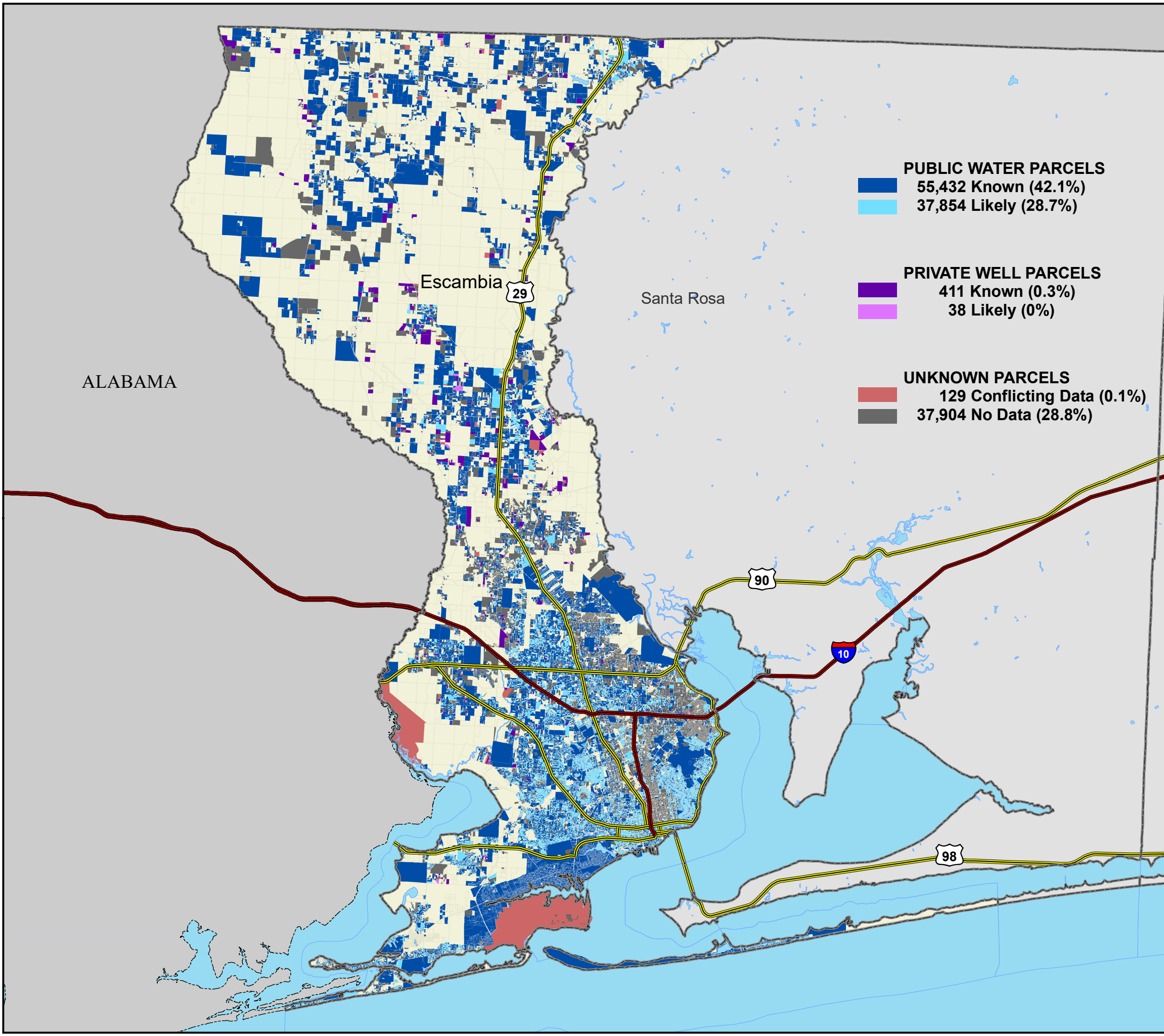
* Includes parcels with unknown Built status. Percentages do not include parcels where drinking water is not applicable.

— Interstate
— US Highway
— State Road



1:310,000
Albers Equal Area NAD83 HARN

This map is based on sources of varied accuracy and scale provided by multiple organizations. FDOH assumes no liability for the use of this map and associated data.



ALABAMA