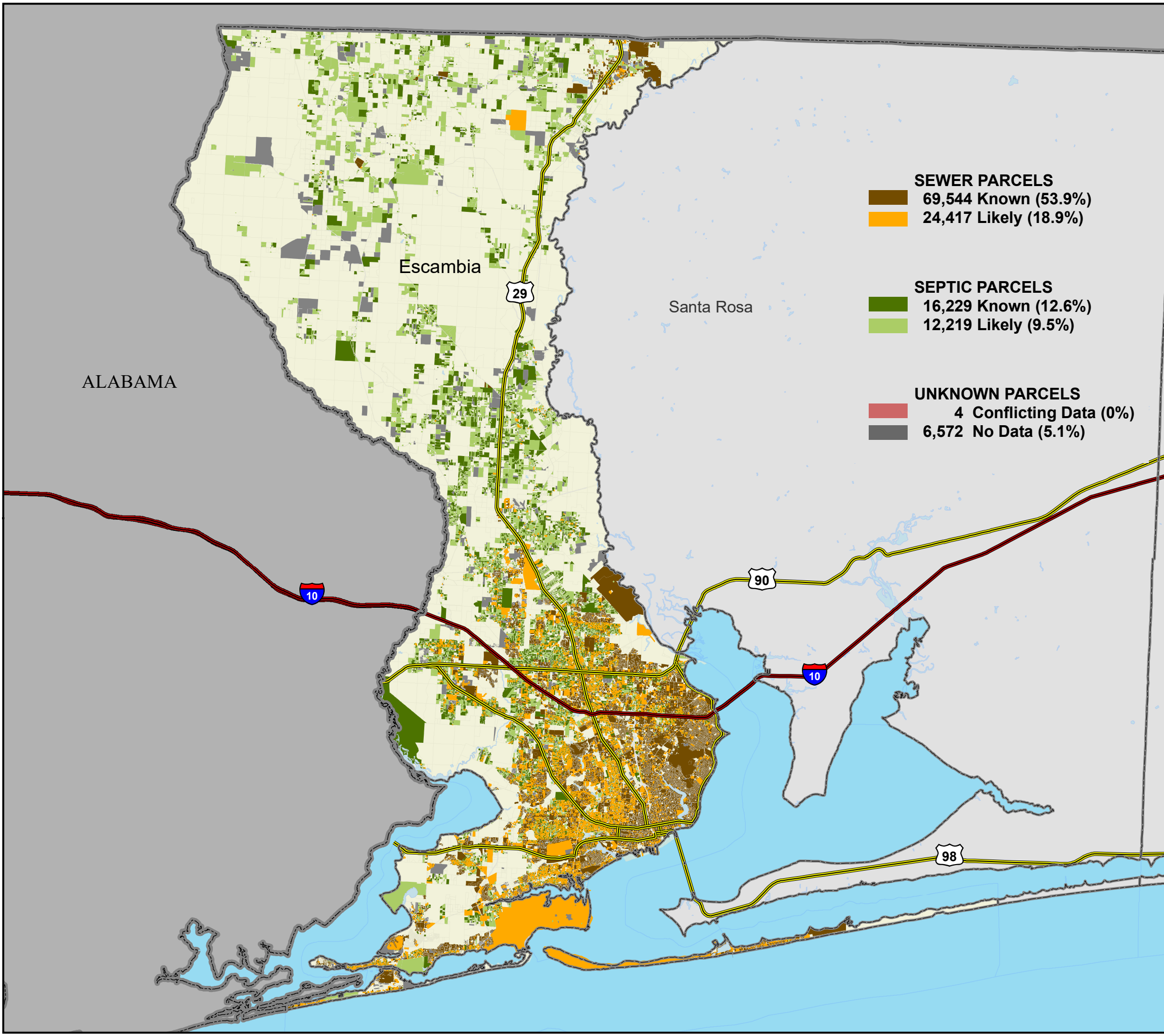


Florida Water Management Inventory

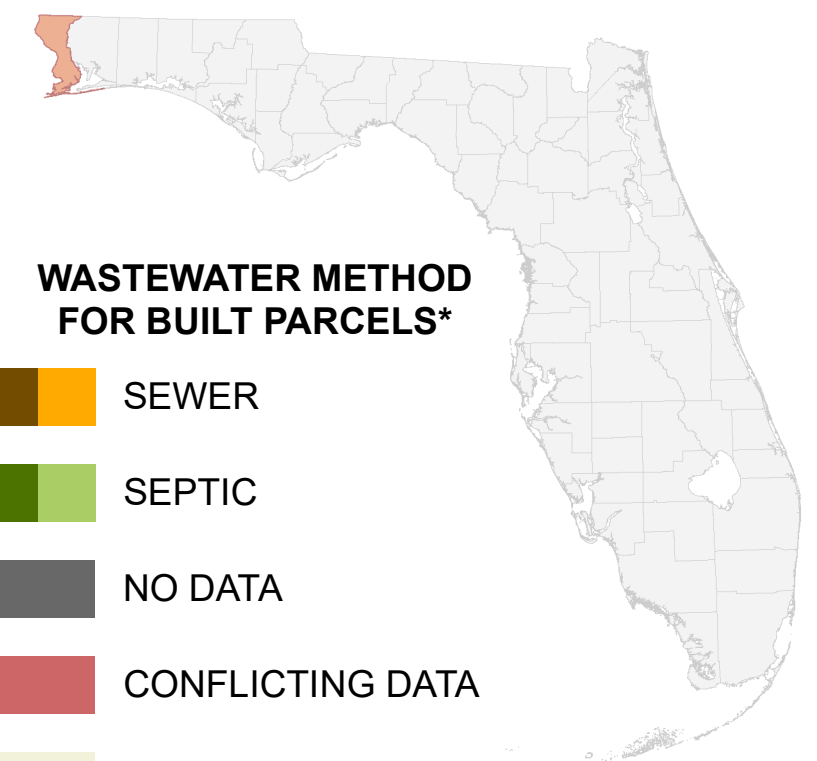
Escambia County Wastewater 2021



SEWER PARCELS
 69,544 Known (53.9%)
 24,417 Likely (18.9%)

SEPTIC PARCELS
 16,229 Known (12.6%)
 12,219 Likely (9.5%)

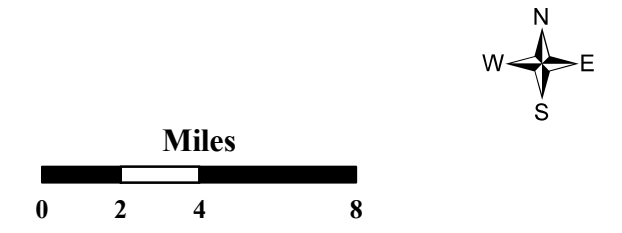
UNKNOWN PARCELS
 4 Conflicting Data (0%)
 6,572 No Data (5.1%)



WASTEWATER METHOD FOR BUILT PARCELS*

- SEWER
- SEPTIC
- NO DATA
- CONFLICTING DATA
- NOT BUILT

— Interstate * Includes parcels with unknown Built status. Percentages do not include parcels where wastewater is not applicable.
 — US Highway



This map is based on sources of varied accuracy and scale provided by multiple organizations. FDOH assumes no liability for the use of this map and associated data.

