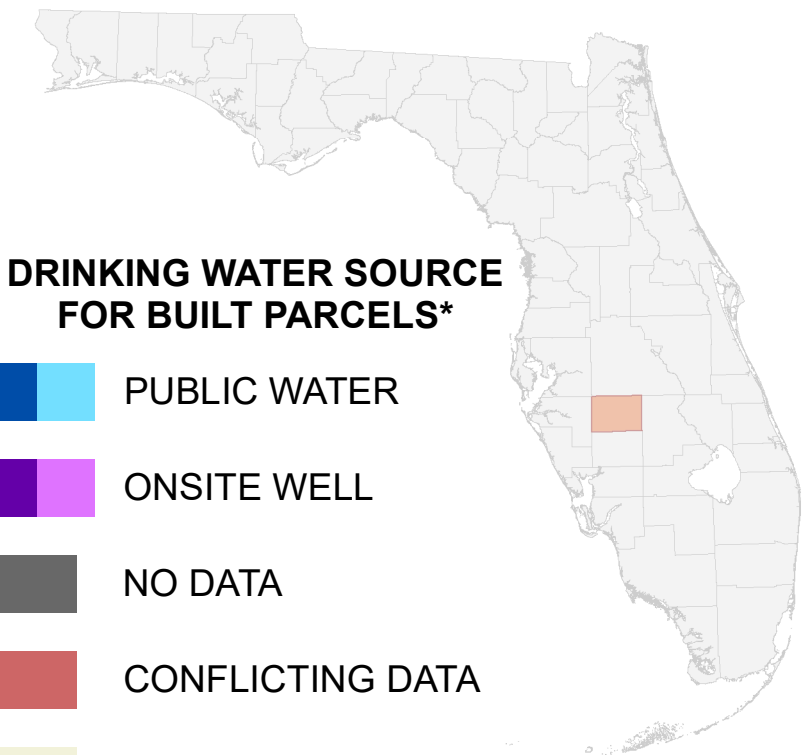
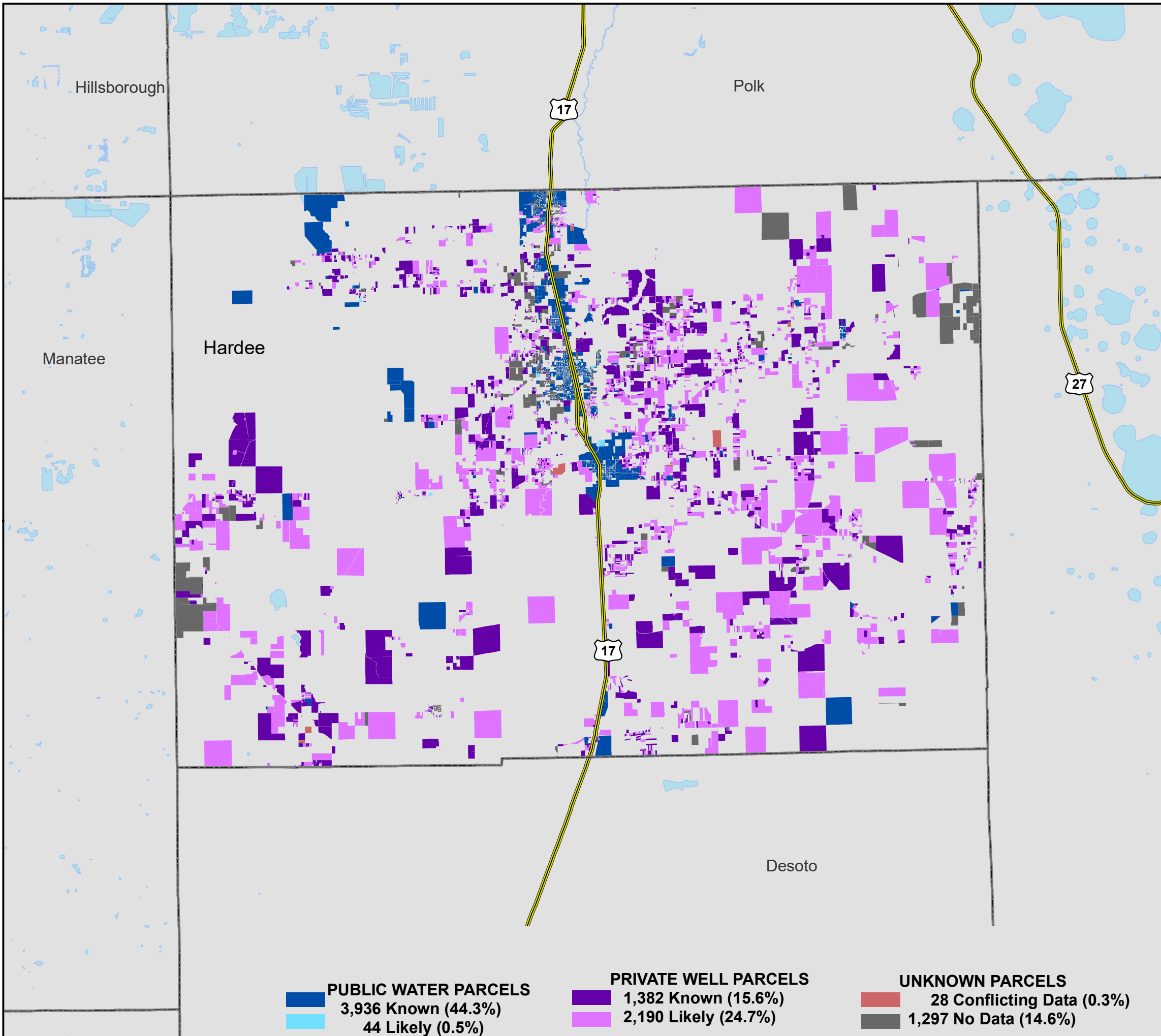


Florida Water Management Inventory

Hardee County Drinking Water 2018

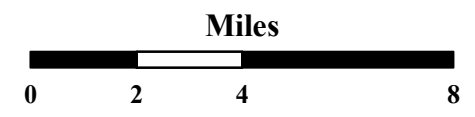


DRINKING WATER SOURCE FOR BUILT PARCELS*

- PUBLIC WATER
- ONSITE WELL
- NO DATA
- CONFLICTING DATA
- NOT BUILT

- Interstate
- US Highway
- State Road

* Includes parcels with unknown Built status. Percentages do not include parcels where drinking water is not applicable.



1:230,000
Albers Equal Area NAD83 HARN

<p>PUBLIC WATER PARCELS</p> <p> 3,936 Known (44.3%)</p> <p> 44 Likely (0.5%)</p>	<p>PRIVATE WELL PARCELS</p> <p> 1,382 Known (15.6%)</p> <p> 2,190 Likely (24.7%)</p>	<p>UNKNOWN PARCELS</p> <p> 28 Conflicting Data (0.3%)</p> <p> 1,297 No Data (14.6%)</p>
---	---	--

This map is based on sources of varied accuracy and scale provided by multiple organizations. FDOH assumes no liability for the use of this map and associated data.

