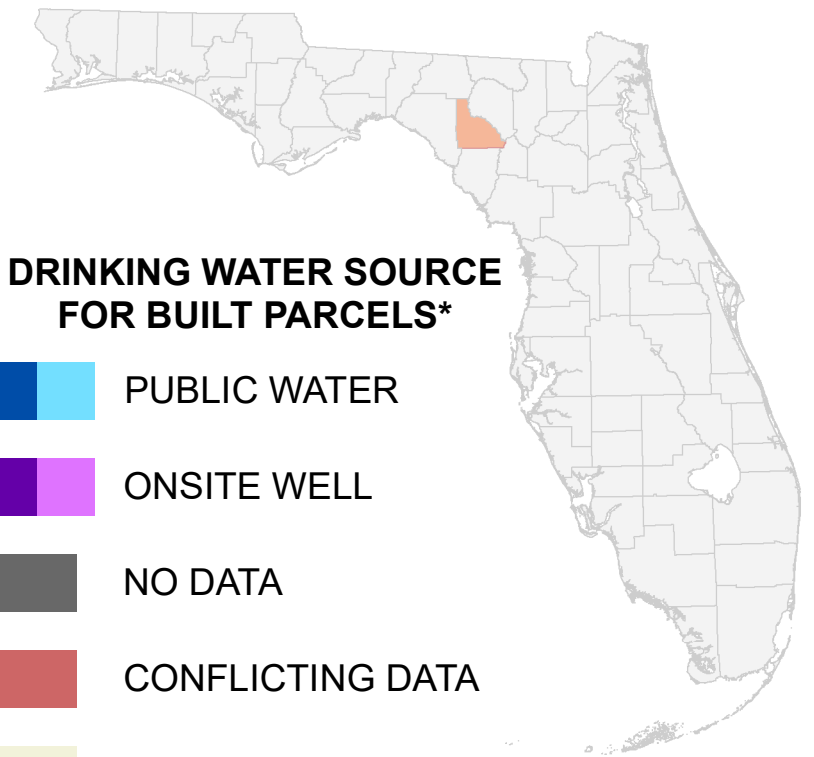


Florida Water Management Inventory

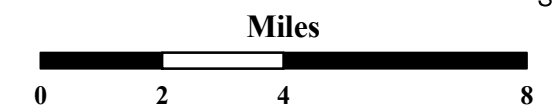
Lafayette County Drinking Water 2022



DRINKING WATER SOURCE FOR BUILT PARCELS*

- PUBLIC WATER
- ONSITE WELL
- NO DATA
- CONFLICTING DATA
- NOT BUILT

Interstate * Includes parcels with unknown Built status. Percentages do not include parcels where drinking water is not applicable.
 US Highway
 State Road

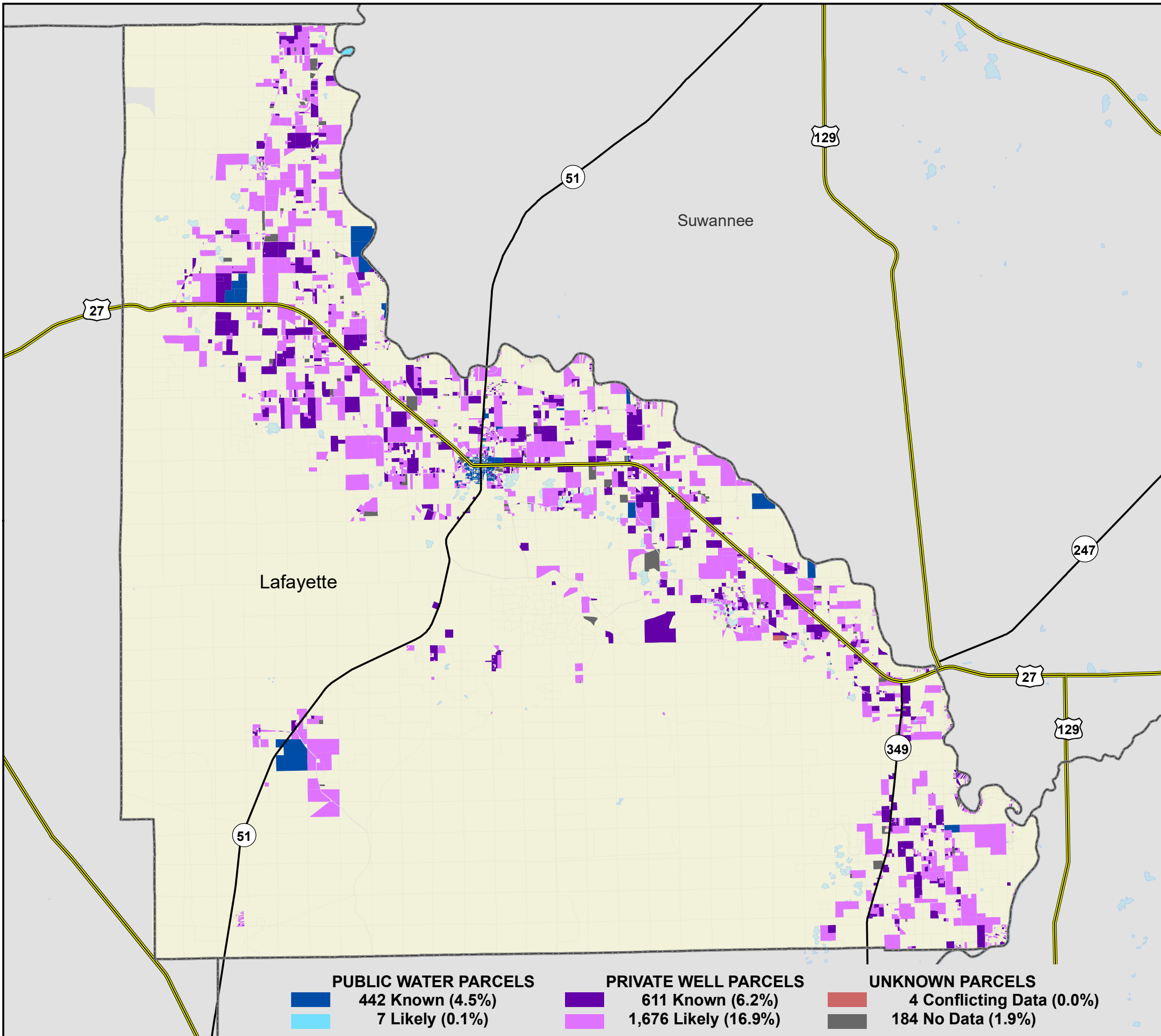


1:200,000
 Albers Equal Area NAD83 HARN



This map is based on sources of varied accuracy and scale provided by multiple organizations. FDOH assumes no liability for the use of this map and associated data.

02Mar2022



PUBLIC WATER PARCELS		PRIVATE WELL PARCELS		UNKNOWN PARCELS	
	442 Known (4.5%)		611 Known (6.2%)		4 Conflicting Data (0.0%)
	7 Likely (0.1%)		1,676 Likely (16.9%)		184 No Data (1.9%)