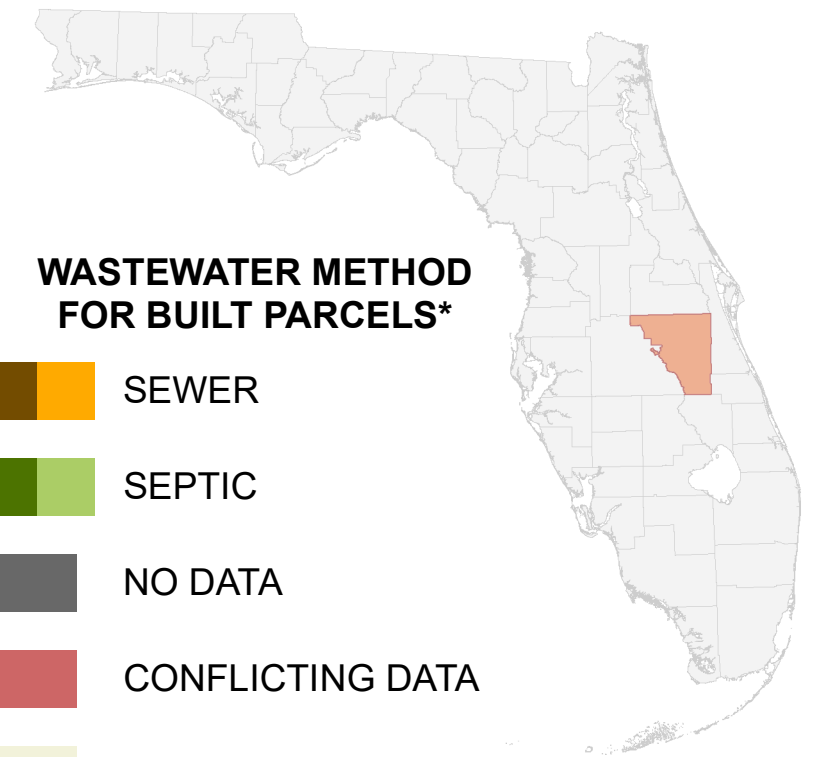


# Florida Water Management Inventory

## Osceola County Wastewater 2022

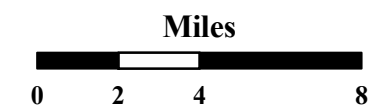


### WASTEWATER METHOD FOR BUILT PARCELS\*

- SEWER
- SEPTIC
- NO DATA
- CONFLICTING DATA
- NOT BUILT

\* Includes parcels with unknown Built status. Percentages do not include parcels where wastewater is not applicable.

- Interstate
- US Highway
- State Road

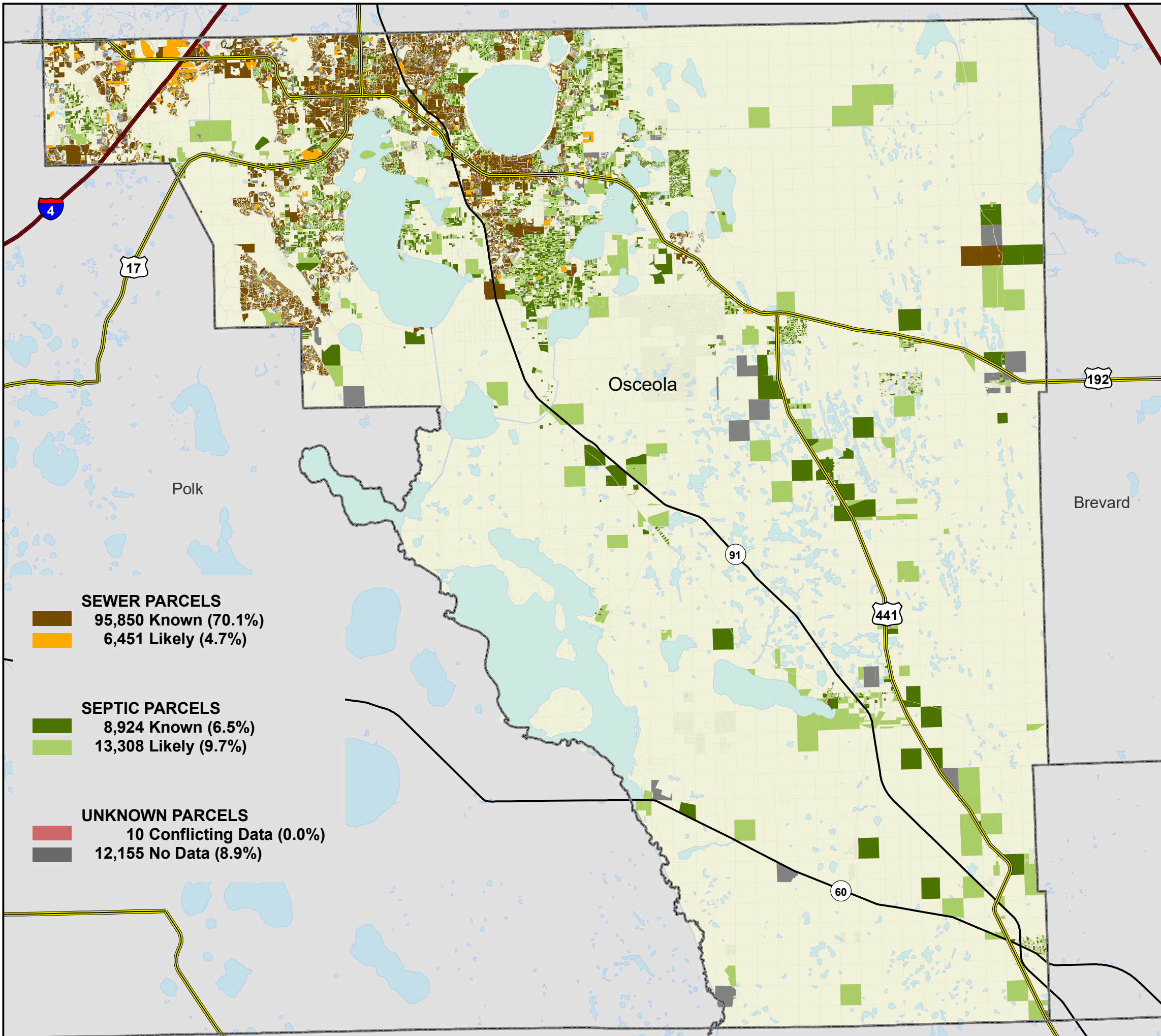


1:300,000  
Albers Equal Area NAD83 HARN

This map is based on sources of varied accuracy and scale provided by multiple organizations. FDOH assumes no liability for the use of this map and associated data.



14Dec2022



- SEWER PARCELS**
- 95,850 Known (70.1%)
- 6,451 Likely (4.7%)
  
- SEPTIC PARCELS**
- 8,924 Known (6.5%)
- 13,308 Likely (9.7%)
  
- UNKNOWN PARCELS**
- 10 Conflicting Data (0.0%)
- 12,155 No Data (8.9%)