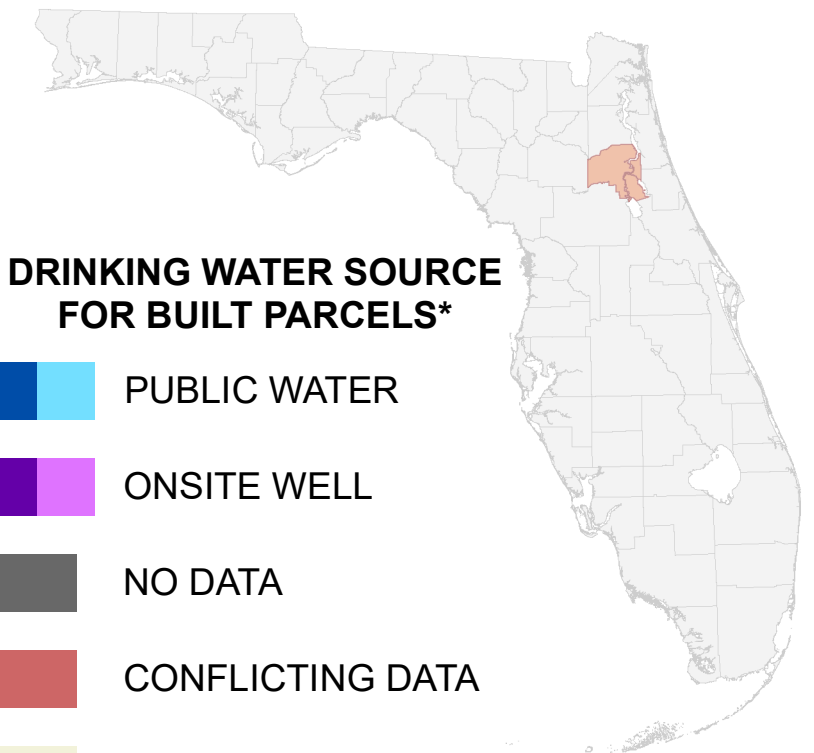


Florida Water Management Inventory

Putnam County Drinking Water 2022



DRINKING WATER SOURCE FOR BUILT PARCELS*

- PUBLIC WATER
- ONSITE WELL
- NO DATA
- CONFLICTING DATA
- NOT BUILT

Interstate * Includes parcels with unknown Built status. Percentages do not include parcels where drinking water is not applicable.
 US Highway
 State Road

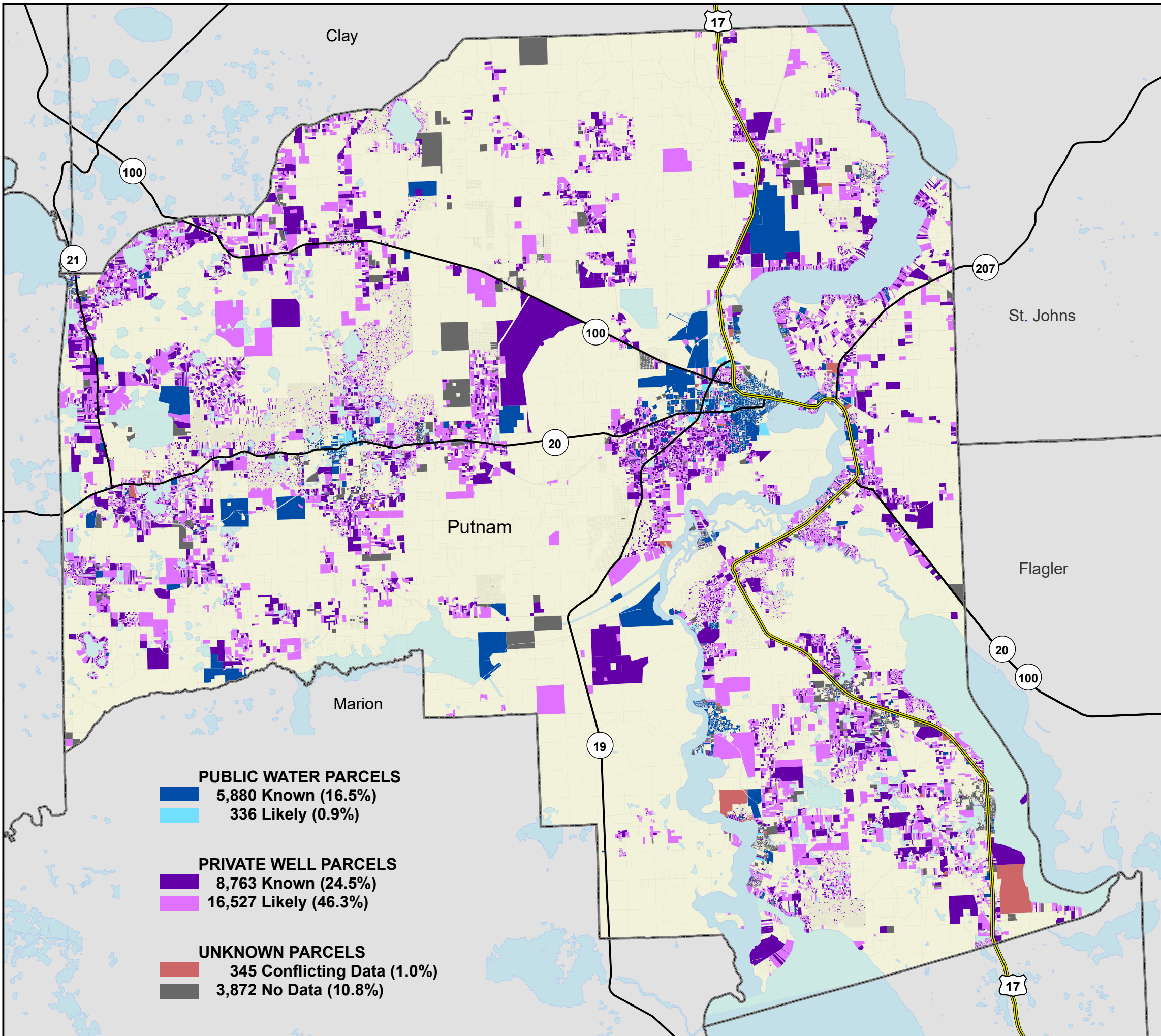


1:220,000
 Albers Equal Area NAD83 HARN

This map is based on sources of varied accuracy and scale provided by multiple organizations. FDOH assumes no liability for the use of this map and associated data.



04Sep2022



PUBLIC WATER PARCELS	
	5,880 Known (16.5%)
	336 Likely (0.9%)
PRIVATE WELL PARCELS	
	8,763 Known (24.5%)
	16,527 Likely (46.3%)
UNKNOWN PARCELS	
	345 Conflicting Data (1.0%)
	3,872 No Data (10.8%)