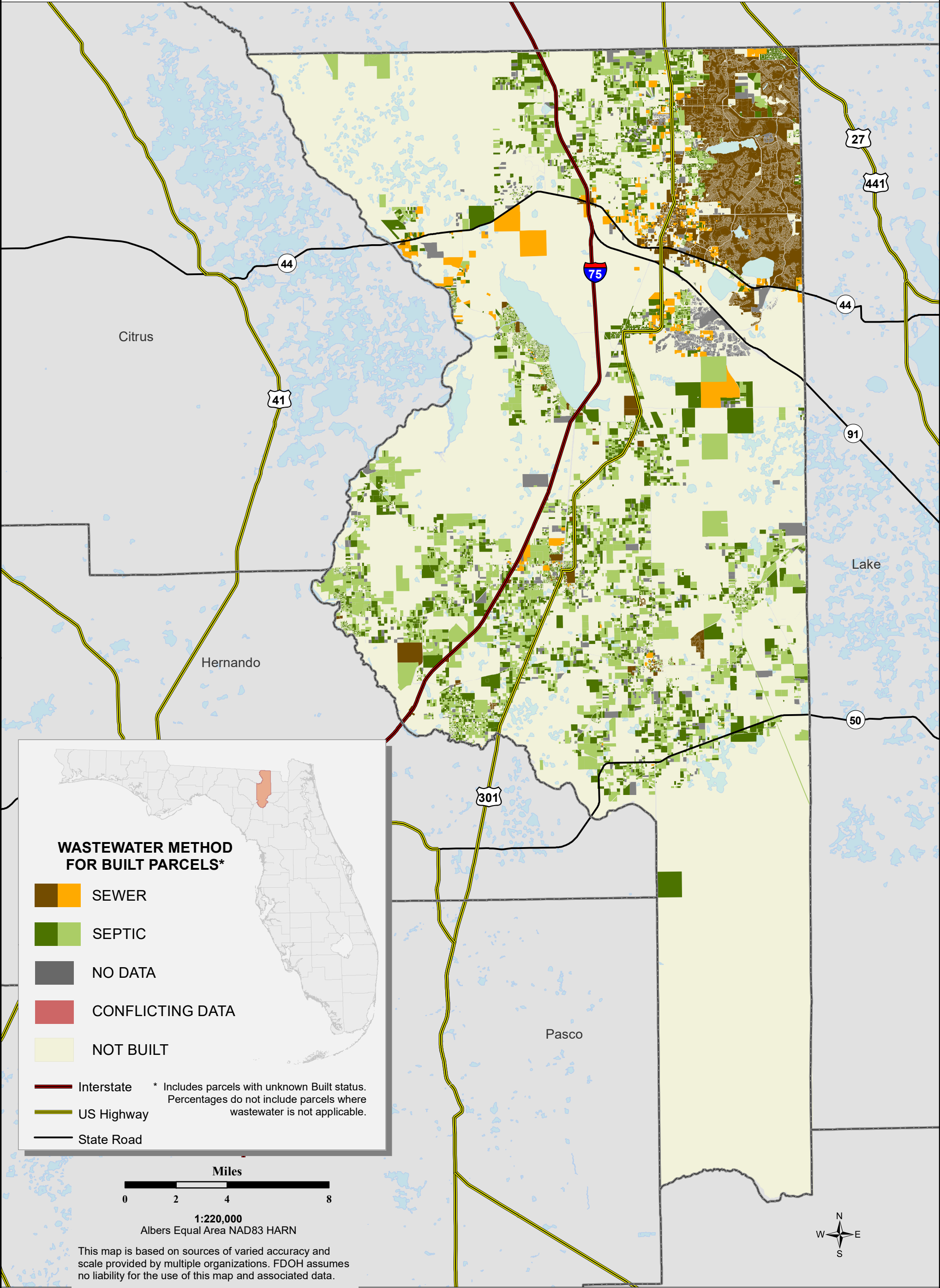


Florida Water Management Inventory

Sumter County Wastewater 2023



SEWER PARCELS
51,130 Known (71.0%)
684 Likely (1.0%)

SEPTIC PARCELS
5,302 Known (7.4%)
7,396 Likely (10.3%)

UNKNOWN PARCELS
2 Conflicting Data (0.0%)
7,472 No Data (10.4%)

