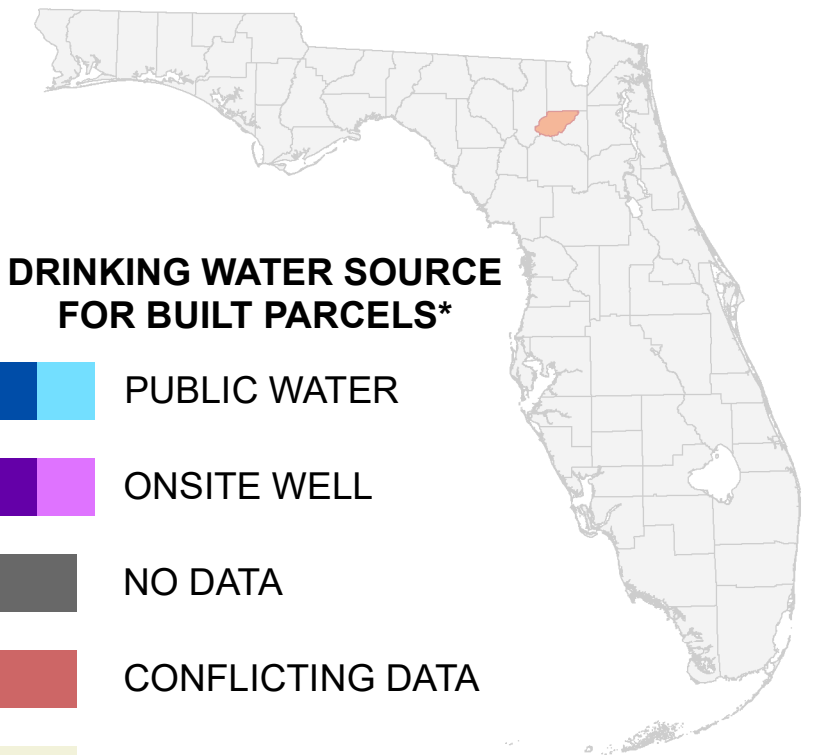


# Florida Water Management Inventory

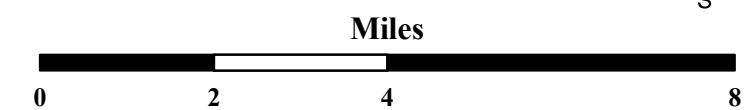
## Union County Drinking Water 2022



### DRINKING WATER SOURCE FOR BUILT PARCELS\*

- PUBLIC WATER
- ONSITE WELL
- NO DATA
- CONFLICTING DATA
- NOT BUILT

Interstate    \* Includes parcels with unknown Built status. Percentages do not include parcels where drinking water is not applicable.  
 US Highway  
 State Road

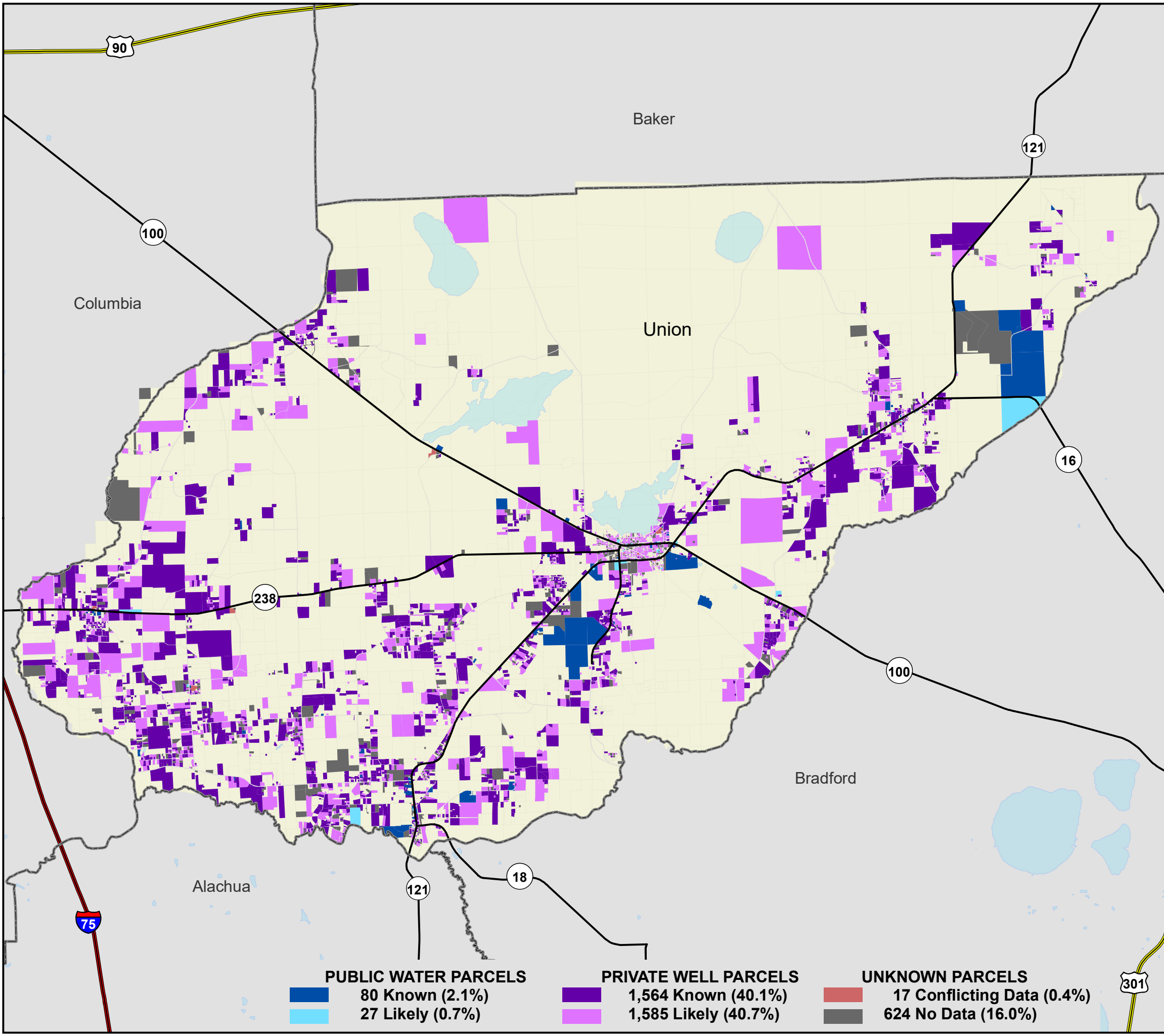


1:140,000  
Albers Equal Area NAD83 HARN

This map is based on sources of varied accuracy and scale provided by multiple organizations. FDOH assumes no liability for the use of this map and associated data.



05Apr2022



PUBLIC WATER PARCELS		PRIVATE WELL PARCELS		UNKNOWN PARCELS	
<span style="display: inline-block; width: 15px; height: 15px; background-color: #0070C0; border: 1px solid black;"></span>	80 Known (2.1%)	<span style="display: inline-block; width: 15px; height: 15px; background-color: #800080; border: 1px solid black;"></span>	1,564 Known (40.1%)	<span style="display: inline-block; width: 15px; height: 15px; background-color: #C00000; border: 1px solid black;"></span>	17 Conflicting Data (0.4%)
<span style="display: inline-block; width: 15px; height: 15px; background-color: #00B0F0; border: 1px solid black;"></span>	27 Likely (0.7%)	<span style="display: inline-block; width: 15px; height: 15px; background-color: #FF00FF; border: 1px solid black;"></span>	1,585 Likely (40.7%)	<span style="display: inline-block; width: 15px; height: 15px; background-color: #666666; border: 1px solid black;"></span>	624 No Data (16.0%)