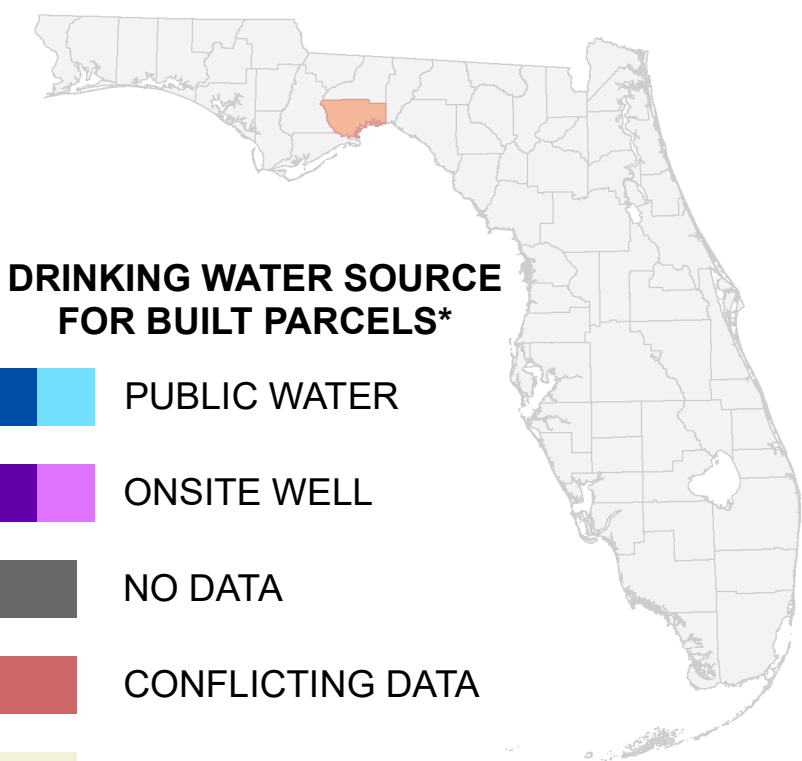
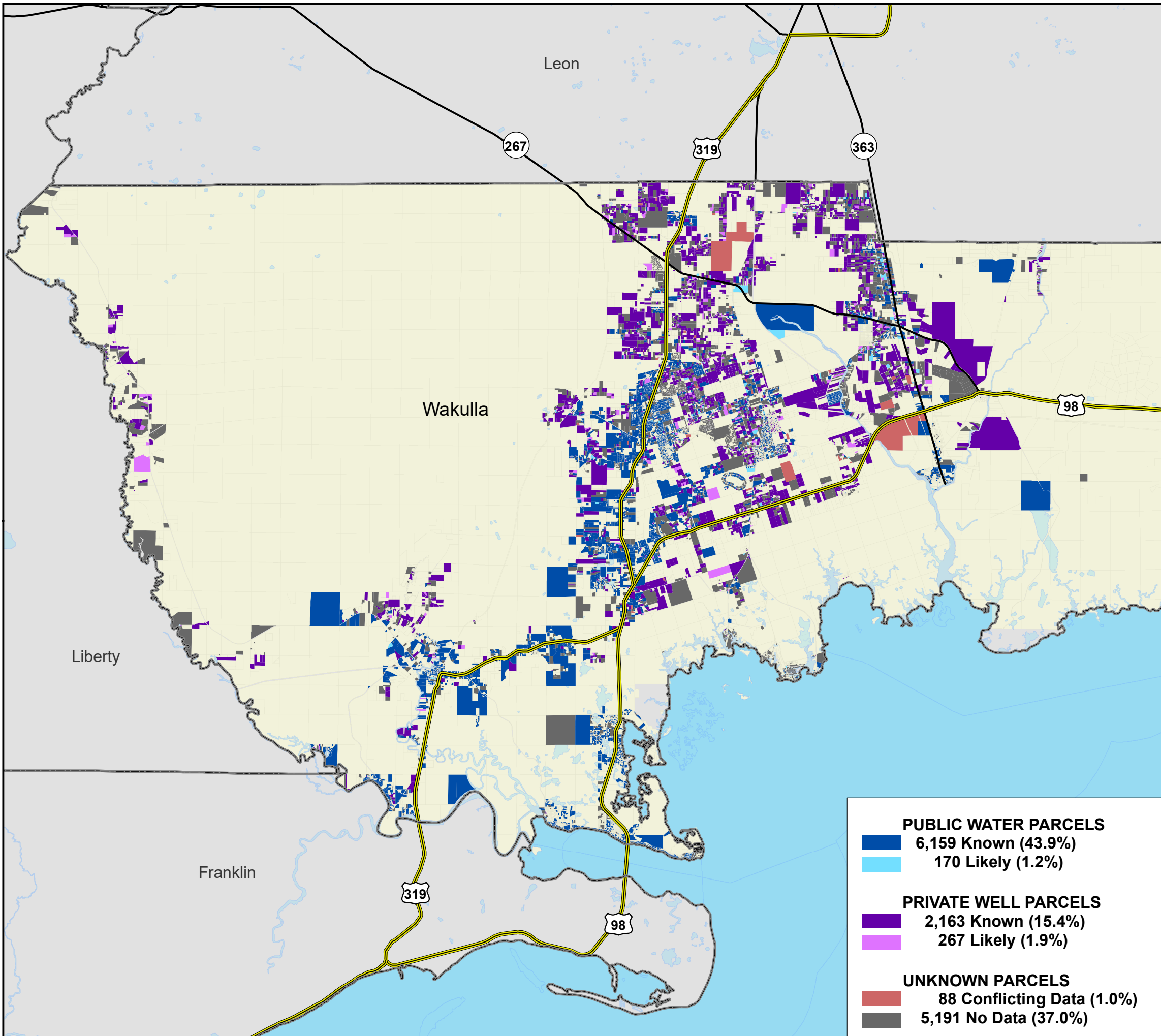


Florida Water Management Inventory

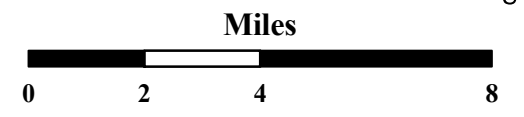
Wakulla County Drinking Water 2021



DRINKING WATER SOURCE FOR BUILT PARCELS*

- PUBLIC WATER
- ONSITE WELL
- NO DATA
- CONFLICTING DATA
- NOT BUILT

- Interstate
 - US Highway
 - State Road
- * Includes parcels with unknown Built status. Percentages do not include parcels where drinking water is not applicable.



1:210,000
Albers Equal Area NAD83 HARN

| PUBLIC WATER PARCELS | |
|---|----------------------------|
| | 6,159 Known (43.9%) |
| | 170 Likely (1.2%) |
| PRIVATE WELL PARCELS | |
| | 2,163 Known (15.4%) |
| | 267 Likely (1.9%) |
| UNKNOWN PARCELS | |
| | 88 Conflicting Data (1.0%) |
| | 5,191 No Data (37.0%) |

This map is based on sources of varied accuracy and scale provided by multiple organizations. FDOH assumes no liability for the use of this map and associated data.



15Dec2021