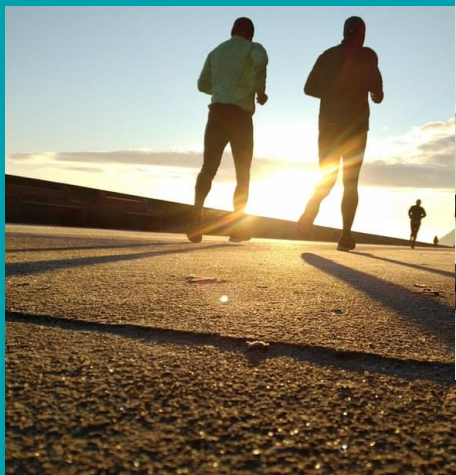


The Florida Behavioral Risk Factor Surveillance System (BRFSS) 2018



Florida Department of Health
Division of Community Health Promotion
Public Health Research Section

Scott A. Rivkees, MD
State Surgeon General

Ron DeSantis
Governor

August 2019



Introduction

The Florida Department of Health is pleased to release the 2018 Florida Behavioral Risk Factor Surveillance System (BRFSS) State Data. The Florida BRFSS has been collecting and reporting health behavior data since 1986. The 2018 BRFSS Survey interviewed 15,242 Florida adults aged 18 years and older.

This statewide telephone survey is the only source of state-specific, population-based estimates of the prevalence of various health conditions and related risk behaviors among Florida residents aged 18 and older. The purpose of this survey is to gather information regarding personal health and risk behaviors, selected medical conditions, and preventive health care practices among Florida adults. These data can be used to: (1) determine priority health issues and identify populations at risk for illness, disability, and death; (2) plan and evaluate prevention programs; (3) educate the community and policy makers about disease prevention; and (4) support community policies that promote health and prevent disease.

The following data tables present the survey data on a variety of issues related to health status, health care access, lifestyle, chronic illnesses, and disease prevention practices. Each indicator was analyzed by sex, race/ethnicity, age, education, income, and marital status.

Since BRFSS respondents are randomly selected, measures of prevalence and mean are subject to random sample errors. Each measure listed in the data tables includes the 95% confidence interval (CI). If the CIs overlap between subpopulations (e.g., males compared to females), there is no statistically significant difference in the prevalence rates. However, if the CIs do not overlap, there is a statistically significant difference. For example, if the CI for men is 21.4% - 24.5% and the CI for women is 29.4% - 32.5%, then there is a statistically higher prevalence of women having that particular indicator compared to men as the two CIs do not overlap.

The CIs are determined by many factors, sample size in particular. As the data are divided for analysis by race/ethnicity, age, etc., the sample size for each group becomes smaller, the CIs become larger, and the estimates become less reliable. The significance of measures with very wide CIs should be interpreted with caution. Measures of prevalence and mean are excluded from the tables for any subpopulation with a sample size less than 30, which would yield statistically unreliable estimates.

The prevalence rates are adjusted, or “weighted,” by the Centers for Disease Control and Prevention (CDC) to represent all Florida adults. Weighting is a procedure that adjusts for the chance of an adult being selected to complete the survey and for discrepancies between the adults who completed the survey and the overall population of Florida adults. The data were weighted to the respondent’s probability of selection by county, as well as age, sex, marital status, race/ethnicity, education level, and housing type.

Due to a change in weighting methodology and the inclusion of cellular telephone responses starting in 2011, data from 2018 may not be comparable to data collected before 2011.

**2018 Florida BRFSS Data Book
Table of Contents**

Health Status

Arthritis	1
Asthma	2
Cancer Prevalence	3
Cardiovascular Disease	4
Cholesterol Awareness	6
Chronic Obstructive Pulmonary Disease (COPD)	9
Depression	10
Diabetes	11
Disability	14
Epilepsy	18
Fall-Related Injury	20
Hypertension Awareness & Control	21
Kidney Disease	22
Oral Health	23
Overweight & Obesity	24

Health-Related Prevention

Cancer Screening/Breast	26
Cancer Screening/Cervical	27
Cancer Screening/Colorectal	29
Cancer Screening/Prostate	32
Clinical Breast Exam	33
HIV/AIDS Screening	35
Immunization	37
Injury Prevention	39

Health-Related Behaviors

Alcohol Consumption	40
Marijuana use	41
Physical Activity & Nutrition	42
Tobacco Use & Exposure	43

Health Status & Quality of Life	47
--	----

Health Care Access & Coverage	54
--	----

Glossary	Appendix I
-----------------	------------

Healthy People 2020 Objectives	Appendix II
---------------------------------------	-------------

2018 Florida BRFSS Data

Arthritis

Percentage of adults who have been told they have some form of arthritis, rheumatoid arthritis, gout, lupus, or fibromyalgia

		Measure	95% CI
ALL	Overall	26.5	25.2 - 27.8
SEX	Men	22.1	20.3 - 23.9
	Women	30.6	28.8 - 32.5
RACE/ETHNICITY	Non-Hisp. White	32.5	30.9 - 34.0
	Non-Hisp. Black	20.1	16.6 - 23.5
	Hispanic	17.7	14.4 - 21.0
SEX BY RACE/ETHNICITY	Non-Hisp. White Men	28.1	26.0 - 30.3
	Non-Hisp. White Women	36.6	34.5 - 38.7
	Non-Hisp. Black Men	14.0	10.0 - 18.0
	Non-Hisp. Black Women	25.4	20.1 - 30.7
	Hispanic Men	13.3	8.7 - 17.9
	Hispanic Women	21.8	17.1 - 26.6
AGE GROUP	18-44	8.4	7.0 - 9.8
	45-64	31.2	28.6 - 33.7
	65 & Older	49.8	47.1 - 52.4
EDUCATION LEVEL	<High School	30.7	25.8 - 35.6
	High School / GED	27.0	24.5 - 29.4
	>High School	25.2	23.7 - 26.8
ANNUAL INCOME	<\$25,000	32.0	29.0 - 35.0
	\$25,000-\$49,999	26.2	23.3 - 29.1
	\$50,000 or More	23.3	21.4 - 25.2
MARITAL STATUS	Married/Couple	25.3	23.6 - 27.0
	Not Married/Couple	28.2	26.1 - 30.2

CI=Confidence Interval

NA=Not available due to respondent counts of less than 30.

2018 Florida BRFSS Data

Asthma

Percentage of adults who currently have asthma

		Measure	95% CI
ALL	Overall	8.7	7.8 - 9.7
SEX	Men	5.0	4.0 - 6.0
	Women	12.2	10.7 - 13.7
RACE/ETHNICITY	Non-Hisp. White	8.7	7.7 - 9.7
	Non-Hisp. Black	10.2	7.3 - 13.2
	Hispanic	8.1	5.6 - 10.5
SEX BY RACE/ETHNICITY	Non-Hisp. White Men	5.2	4.1 - 6.3
	Non-Hisp. White Women	12.0	10.4 - 13.6
	Non-Hisp. Black Men	6.2	2.5 - 9.8
	Non-Hisp. Black Women	13.9	9.4 - 18.4
	Hispanic Men	4.1	1.6 - 6.5
	Hispanic Women	11.9	7.8 - 15.9
AGE GROUP	18-44	8.2	6.7 - 9.7
	45-64	10.0	8.3 - 11.8
	65 & Older	8.1	6.4 - 9.8
EDUCATION LEVEL	<High School	13.2	9.0 - 17.3
	High School / GED	9.9	8.1 - 11.7
	>High School	7.1	6.2 - 8.1
ANNUAL INCOME	<\$25,000	13.6	11.0 - 16.1
	\$25,000-\$49,999	6.7	5.2 - 8.3
	\$50,000 or More	7.2	6.0 - 8.5
MARITAL STATUS	Married/Couple	6.5	5.5 - 7.6
	Not Married/Couple	11.1	9.5 - 12.7

Percentage of adults who have ever been told they have asthma

		Measure	95% CI
ALL	Overall	13.6	12.5 - 14.8
SEX	Men	9.6	8.2 - 11.0
	Women	17.3	15.6 - 19.1
RACE/ETHNICITY	Non-Hisp. White	12.6	11.4 - 13.7
	Non-Hisp. Black	13.8	10.5 - 17.2
	Hispanic	16.3	13.0 - 19.7
SEX BY RACE/ETHNICITY	Non-Hisp. White Men	8.9	7.6 - 10.3
	Non-Hisp. White Women	16.0	14.2 - 17.8
	Non-Hisp. Black Men	9.1	4.9 - 13.2
	Non-Hisp. Black Women	18.1	13.1 - 23.1
	Hispanic Men	11.6	7.6 - 15.6
	Hispanic Women	20.8	15.7 - 26.0
AGE GROUP	18-44	14.8	12.9 - 16.8
	45-64	14.3	12.3 - 16.4
	65 & Older	11.1	9.2 - 13.0
EDUCATION LEVEL	<High School	18.1	13.4 - 22.8
	High School / GED	14.1	12.0 - 16.2
	>High School	12.4	11.1 - 13.7
ANNUAL INCOME	<\$25,000	18.3	15.5 - 21.1
	\$25,000-\$49,999	12.6	10.2 - 15.0
	\$50,000 or More	11.7	10.1 - 13.3
MARITAL STATUS	Married/Couple	11.0	9.6 - 12.4
	Not Married/Couple	16.5	14.6 - 18.4

CI=Confidence Interval
 NA=Not available due to respondent counts of less than 30.

Cancer Prevalence

Percentage of adults who have ever been told they have had skin cancer

		Measure	95% CI
ALL	Overall	9.8	9.1 - 10.6
SEX	Men	10.5	9.4 - 11.7
	Women	9.2	8.2 - 10.1
RACE/ETHNICITY	Non-Hisp. White	15.9	14.7 - 17.0
	Non-Hisp. Black	0.6	0.0 - 1.3
	Hispanic	2.6	1.3 - 3.9
SEX BY RACE/ETHNICITY	Non-Hisp. White Men	16.4	14.7 - 18.1
	Non-Hisp. White Women	15.4	13.8 - 17.0
	Non-Hisp. Black Men	0.8	0.0 - 2.2
	Non-Hisp. Black Women	0.4	0.0 - 1.0
	Hispanic Men	3.8	1.4 - 6.3
	Hispanic Women	1.4	0.4 - 2.5
AGE GROUP	18-44	0.7	0.4 - 1.1
	45-64	9.4	8.0 - 10.8
	65 & Older	24.5	22.4 - 26.6
EDUCATION LEVEL	<High School	5.4	3.0 - 7.7
	High School / GED	10.0	8.5 - 11.5
	>High School	10.7	9.8 - 11.7
ANNUAL INCOME	<\$25,000	8.4	6.7 - 10.0
	\$25,000-\$49,999	9.1	7.6 - 10.7
	\$50,000 or More	11.9	10.6 - 13.2
MARITAL STATUS	Married/Couple	11.6	10.5 - 12.7
	Not Married/Couple	7.8	6.9 - 8.8

Percentage of adults who have ever been told they had any other type of cancer except skin cancer

		Measure	95% CI
ALL	Overall	7.9	7.1 - 8.7
SEX	Men	7.4	6.3 - 8.5
	Women	8.4	7.4 - 9.5
RACE/ETHNICITY	Non-Hisp. White	9.7	8.9 - 10.6
	Non-Hisp. Black	5.1	3.1 - 7.1
	Hispanic	6.0	3.9 - 8.1
SEX BY RACE/ETHNICITY	Non-Hisp. White Men	8.9	7.7 - 10.2
	Non-Hisp. White Women	10.5	9.3 - 11.7
	Non-Hisp. Black Men	6.1	2.5 - 9.6
	Non-Hisp. Black Women	4.2	2.1 - 6.4
	Hispanic Men	5.2	2.4 - 7.9
	Hispanic Women	6.9	3.8 - 10.0
AGE GROUP	18-44	1.4	0.8 - 2.0
	45-64	7.2	5.7 - 8.6
	65 & Older	19.0	17.0 - 21.0
EDUCATION LEVEL	<High School	8.0	4.7 - 11.2
	High School / GED	6.7	5.5 - 7.9
	>High School	8.4	7.5 - 9.4
ANNUAL INCOME	<\$25,000	8.6	6.9 - 10.2
	\$25,000-\$49,999	8.0	6.3 - 9.7
	\$50,000 or More	8.2	7.0 - 9.5
MARITAL STATUS	Married/Couple	8.7	7.6 - 9.8
	Not Married/Couple	7.1	6.0 - 8.2

CI=Confidence Interval
 NA=Not available due to respondent counts of less than 30.

2018 Florida BRFSS Data

Cardiovascular Disease

Percentage of adults who have ever been told they had a stroke

		Measure	95% CI
ALL	Overall	4.1	3.5 - 4.7
SEX	Men	4.7	3.7 - 5.8
	Women	3.4	2.8 - 4.1
RACE/ETHNICITY	Non-Hisp. White	4.3	3.7 - 5.0
	Non-Hisp. Black	5.1	3.1 - 7.2
	Hispanic	3.0	1.5 - 4.5
SEX BY RACE/ETHNICITY	Non-Hisp. White Men	4.7	3.6 - 5.7
	Non-Hisp. White Women	4.0	3.2 - 4.8
	Non-Hisp. Black Men	6.1	2.4 - 9.8
	Non-Hisp. Black Women	4.3	2.3 - 6.3
	Hispanic Men	4.2	1.6 - 6.8
	Hispanic Women	1.8	0.2 - 3.4
AGE GROUP	18-44	0.8	0.3 - 1.2
	45-64	4.3	3.2 - 5.4
	65 & Older	9.0	7.4 - 10.7
EDUCATION LEVEL	<High School	6.5	4.0 - 9.1
	High School / GED	4.9	3.5 - 6.2
	>High School	3.1	2.6 - 3.6
ANNUAL INCOME	<\$25,000	7.5	5.7 - 9.4
	\$25,000-\$49,999	3.4	2.2 - 4.6
	\$50,000 or More	2.7	1.9 - 3.4
MARITAL STATUS	Married/Couple	3.9	3.0 - 4.8
	Not Married/Couple	4.3	3.5 - 5.1

Percentage of adults who have ever been told they had coronary heart disease, heart attack, or stroke

		Measure	95% CI
ALL	Overall	11.0	10.0 - 12.0
SEX	Men	13.5	11.8 - 15.2
	Women	8.6	7.5 - 9.8
RACE/ETHNICITY	Non-Hisp. White	12.5	11.4 - 13.5
	Non-Hisp. Black	9.2	6.2 - 12.2
	Hispanic	8.8	6.1 - 11.5
SEX BY RACE/ETHNICITY	Non-Hisp. White Men	15.1	13.3 - 16.8
	Non-Hisp. White Women	10.0	8.7 - 11.3
	Non-Hisp. Black Men	11.8	6.1 - 17.5
	Non-Hisp. Black Women	7.0	4.6 - 9.4
	Hispanic Men	10.6	6.1 - 15.2
	Hispanic Women	7.0	3.9 - 10.2
AGE GROUP	18-44	2.6	1.6 - 3.6
	45-64	11.8	9.8 - 13.8
	65 & Older	23.6	21.2 - 25.9
EDUCATION LEVEL	<High School	16.5	12.4 - 20.7
	High School / GED	12.0	10.1 - 13.9
	>High School	9.2	8.1 - 10.4
ANNUAL INCOME	<\$25,000	15.9	13.4 - 18.4
	\$25,000-\$49,999	12.7	10.0 - 15.4
	\$50,000 or More	7.9	6.7 - 9.1
MARITAL STATUS	Married/Couple	11.5	10.0 - 13.0
	Not Married/Couple	10.5	9.1 - 11.9

CI=Confidence Interval
 NA=Not available due to respondent counts of less than 30.

2018 Florida BRFSS Data

Cardiovascular Disease

Percentage of adults who have ever been told they had angina or coronary heart disease

		Measure	95% CI
ALL	Overall	5.2	4.5 - 5.9
SEX	Men	6.6	5.4 - 7.8
	Women	3.8	3.1 - 4.6
RACE/ETHNICITY	Non-Hisp. White	6.3	5.6 - 7.1
	Non-Hisp. Black	3.8	1.5 - 6.1
	Hispanic	3.6	1.8 - 5.4
SEX BY RACE/ETHNICITY	Non-Hisp. White Men	8.0	6.8 - 9.2
	Non-Hisp. White Women	4.8	3.8 - 5.7
	Non-Hisp. Black Men	5.6	1.0 - 10.2
	Non-Hisp. Black Women	2.2	0.9 - 3.5
	Hispanic Men	4.2	1.3 - 7.2
	Hispanic Women	3.0	1.0 - 5.0
AGE GROUP	18-44	1.2	0.4 - 1.9
	45-64	5.4	3.9 - 6.8
	65 & Older	11.5	10.0 - 13.1
EDUCATION LEVEL	<High School	6.1	3.7 - 8.5
	High School / GED	5.1	4.0 - 6.2
	>High School	5.0	4.0 - 5.9
ANNUAL INCOME	<\$25,000	6.4	5.0 - 7.8
	\$25,000-\$49,999	7.2	4.8 - 9.6
	\$50,000 or More	4.1	3.3 - 5.0
MARITAL STATUS	Married/Couple	5.3	4.4 - 6.2
	Not Married/Couple	5.1	4.0 - 6.2

Percentage of adults who have ever been told they had a heart attack

		Measure	95% CI
ALL	Overall	6.0	5.2 - 6.9
SEX	Men	8.0	6.6 - 9.5
	Women	4.2	3.3 - 5.0
RACE/ETHNICITY	Non-Hisp. White	6.7	5.9 - 7.6
	Non-Hisp. Black	3.5	1.4 - 5.7
	Hispanic	5.7	3.3 - 8.1
SEX BY RACE/ETHNICITY	Non-Hisp. White Men	8.7	7.3 - 10.1
	Non-Hisp. White Women	4.9	3.8 - 5.9
	Non-Hisp. Black Men	4.6	0.4 - 8.8
	Non-Hisp. Black Women	2.6	1.2 - 4.1
	Hispanic Men	8.0	3.6 - 12.3
	Hispanic Women	3.6	1.4 - 5.8
AGE GROUP	18-44	1.4	0.6 - 2.2
	45-64	7.0	5.3 - 8.6
	65 & Older	12.3	10.2 - 14.4
EDUCATION LEVEL	<High School	9.9	6.4 - 13.4
	High School / GED	6.6	5.1 - 8.1
	>High School	4.9	3.9 - 5.8
ANNUAL INCOME	<\$25,000	8.4	6.4 - 10.5
	\$25,000-\$49,999	8.5	6.0 - 11.1
	\$50,000 or More	3.6	2.8 - 4.4
MARITAL STATUS	Married/Couple	7.0	5.7 - 8.3
	Not Married/Couple	4.9	3.9 - 6.0

CI=Confidence Interval
 NA=Not available due to respondent counts of less than 30.

2018 Florida BRFSS Data

Cholesterol Awareness

Percentage of adults who have ever been told that they have high blood cholesterol

		Measure	95% CI
ALL	Overall	34.1	32.4 - 35.8
SEX	Men	34.4	31.8 - 37.1
	Women	33.7	31.5 - 36.0
RACE/ETHNICITY	Non-Hisp. White	37.8	36.0 - 39.7
	Non-Hisp. Black	27.8	23.0 - 32.5
	Hispanic	30.8	26.0 - 35.6
SEX BY RACE/ETHNICITY	Non-Hisp. White Men	37.8	35.0 - 40.7
	Non-Hisp. White Women	37.8	35.4 - 40.2
	Non-Hisp. Black Men	29.7	22.0 - 37.4
	Non-Hisp. Black Women	26.2	20.2 - 32.1
	Hispanic Men	32.9	25.9 - 40.0
	Hispanic Women	28.7	22.2 - 35.3
AGE GROUP	18-44	17.7	14.9 - 20.4
	45-64	40.7	37.5 - 43.8
	65 & Older	48.4	45.5 - 51.4
EDUCATION LEVEL	<High School	28.9	23.7 - 34.1
	High School / GED	34.5	31.1 - 37.8
	>High School	35.1	33.0 - 37.3
ANNUAL INCOME	<\$25,000	34.7	31.2 - 38.3
	\$25,000-\$49,999	30.2	26.7 - 33.8
	\$50,000 or More	36.5	33.6 - 39.3
MARITAL STATUS	Married/Couple	35.5	33.2 - 37.9
	Not Married/Couple	32.4	29.8 - 34.9

Percentage of adults who have had their cholesterol checked in the past five years

		Measure	95% CI
ALL	Overall	87.2	86.0 - 88.4
SEX	Men	84.2	82.1 - 86.2
	Women	90.0	88.6 - 91.4
RACE/ETHNICITY	Non-Hisp. White	87.0	85.5 - 88.4
	Non-Hisp. Black	88.0	84.8 - 91.3
	Hispanic	89.3	86.5 - 92.0
SEX BY RACE/ETHNICITY	Non-Hisp. White Men	84.4	82.0 - 86.7
	Non-Hisp. White Women	89.4	87.6 - 91.1
	Non-Hisp. Black Men	87.0	81.7 - 92.2
	Non-Hisp. Black Women	88.9	84.8 - 92.9
	Hispanic Men	84.4	79.4 - 89.4
	Hispanic Women	94.0	91.5 - 96.4
AGE GROUP	18-44	77.6	74.8 - 80.3
	45-64	91.0	89.3 - 92.7
	65 & Older	94.5	93.3 - 95.7
EDUCATION LEVEL	<High School	82.7	78.1 - 87.3
	High School / GED	85.0	82.6 - 87.5
	>High School	89.3	88.0 - 90.7
ANNUAL INCOME	<\$25,000	85.6	83.2 - 88.1
	\$25,000-\$49,999	83.9	81.0 - 86.8
	\$50,000 or More	91.1	89.3 - 92.8
MARITAL STATUS	Married/Couple	90.1	88.6 - 91.6
	Not Married/Couple	84.1	82.1 - 86.1

CI=Confidence Interval
 NA=Not available due to respondent counts of less than 30.

2018 Florida BRFSS Data

Cholesterol Awareness

Percentage of adults who have ever been told that they have high blood cholesterol among adults who had their cholesterol checked within the past five years

		Measure	95% CI
ALL	Overall	40.7	38.7 - 42.7
SEX	Men	41.7	38.6 - 44.9
	Women	39.8	37.1 - 42.5
RACE/ETHNICITY	Non-Hisp. White	44.3	42.3 - 46.4
	Non-Hisp. Black	33.8	28.1 - 39.6
	Hispanic	37.2	31.4 - 43.0
SEX BY RACE/ETHNICITY	Non-Hisp. White Men	45.1	41.9 - 48.3
	Non-Hisp. White Women	43.7	41.0 - 46.4
	Non-Hisp. Black Men	33.8	24.7 - 43.0
	Non-Hisp. Black Women	33.8	26.5 - 41.1
	Hispanic Men	41.5	32.8 - 50.1
	Hispanic Women	33.5	25.8 - 41.1
AGE GROUP	18-44	24.5	20.7 - 28.3
	45-64	44.6	41.2 - 48.1
	65 & Older	52.1	49.0 - 55.2
EDUCATION LEVEL	<High School	36.4	29.5 - 43.2
	High School / GED	42.4	38.4 - 46.4
	>High School	40.7	38.3 - 43.1
ANNUAL INCOME	<\$25,000	42.7	38.4 - 47.0
	\$25,000-\$49,999	38.1	33.8 - 42.5
	\$50,000 or More	40.6	37.5 - 43.7
MARITAL STATUS	Married/Couple	40.5	37.8 - 43.1
	Not Married/Couple	40.9	37.8 - 44.0

CI=Confidence Interval
 NA=Not available due to respondent counts of less than 30.

2018 Florida BRFSS Data

Cholesterol Awareness

Percentage of adults who have had their cholesterol checked in the past two years

		Measure	95% CI
ALL	Overall	82.1	80.7 - 83.5
SEX	Men	79.2	76.9 - 81.4
	Women	84.7	83.0 - 86.5
RACE/ETHNICITY	Non-Hisp. White	82.0	80.4 - 83.6
	Non-Hisp. Black	83.9	80.1 - 87.7
	Hispanic	82.9	79.3 - 86.5
SEX BY RACE/ETHNICITY	Non-Hisp. White Men	80.6	78.2 - 83.1
	Non-Hisp. White Women	83.3	81.1 - 85.4
	Non-Hisp. Black Men	83.9	78.3 - 89.5
	Non-Hisp. Black Women	83.9	78.7 - 89.1
	Hispanic Men	75.8	69.7 - 81.9
	Hispanic Women	89.8	86.2 - 93.3
AGE GROUP	18-44	68.4	65.2 - 71.6
	45-64	86.9	84.9 - 88.8
	65 & Older	92.9	91.6 - 94.3
EDUCATION LEVEL	<High School	77.2	72.1 - 82.3
	High School / GED	78.3	75.4 - 81.2
	>High School	85.1	83.5 - 86.7
ANNUAL INCOME	<\$25,000	78.6	75.7 - 81.6
	\$25,000-\$49,999	79.2	76.0 - 82.3
	\$50,000 or More	86.2	84.1 - 88.4
MARITAL STATUS	Married/Couple	85.7	84.0 - 87.4
	Not Married/Couple	78.1	75.8 - 80.4

CI=Confidence Interval

NA=Not available due to respondent counts of less than 30.

Chronic Obstructive Pulmonary Disease (COPD)

Percentage of adults who have ever been told they had chronic obstructive pulmonary disease, emphysema, or chronic bronchitis

		Measure	95% CI
ALL	Overall	8.3	7.5 - 9.1
SEX	Men	6.7	5.6 - 7.9
	Women	9.7	8.5 - 10.9
RACE/ETHNICITY	Non-Hisp. White	9.9	9.0 - 10.9
	Non-Hisp. Black	5.3	3.2 - 7.4
	Hispanic	6.4	4.2 - 8.7
SEX BY RACE/ETHNICITY	Non-Hisp. White Men	8.5	7.1 - 9.8
	Non-Hisp. White Women	11.3	10.0 - 12.6
	Non-Hisp. Black Men	3.6	0.8 - 6.4
	Non-Hisp. Black Women	6.8	3.7 - 9.9
	Hispanic Men	5.2	2.4 - 7.9
	Hispanic Women	7.6	4.2 - 11.1
AGE GROUP	18-44	3.8	2.8 - 4.9
	45-64	9.2	7.7 - 10.7
	65 & Older	14.1	12.2 - 16.0
EDUCATION LEVEL	<High School	10.9	7.5 - 14.3
	High School / GED	9.9	8.3 - 11.6
	>High School	6.8	6.0 - 7.7
ANNUAL INCOME	<\$25,000	12.8	10.6 - 14.9
	\$25,000-\$49,999	7.8	6.3 - 9.2
	\$50,000 or More	5.9	4.7 - 7.0
MARITAL STATUS	Married/Couple	7.1	6.1 - 8.2
	Not Married/Couple	9.6	8.3 - 10.9

CI=Confidence Interval
 NA=Not available due to respondent counts of less than 30.

2018 Florida BRFSS Data

Depression

Percentage of adults who have ever been told they had a depressive disorder

		Measure	95% CI
ALL	Overall	15.6	14.5 - 16.7
SEX	Men	10.8	9.4 - 12.1
	Women	20.1	18.4 - 21.9
RACE/ETHNICITY	Non-Hisp. White	17.6	16.3 - 18.9
	Non-Hisp. Black	10.9	8.1 - 13.6
	Hispanic	14.1	11.2 - 17.0
SEX BY RACE/ETHNICITY	Non-Hisp. White Men	12.7	10.9 - 14.5
	Non-Hisp. White Women	22.2	20.3 - 24.1
	Non-Hisp. Black Men	5.5	3.1 - 7.8
	Non-Hisp. Black Women	15.7	11.1 - 20.4
	Hispanic Men	9.6	6.2 - 13.0
	Hispanic Women	18.4	13.8 - 23.0
AGE GROUP	18-44	16.3	14.4 - 18.2
	45-64	18.0	15.9 - 20.1
	65 & Older	12.2	10.5 - 14.0
EDUCATION LEVEL	<High School	19.7	15.3 - 24.2
	High School / GED	16.0	13.8 - 18.1
	>High School	14.5	13.3 - 15.8
ANNUAL INCOME	<\$25,000	21.9	19.3 - 24.5
	\$25,000-\$49,999	15.2	12.8 - 17.5
	\$50,000 or More	12.4	10.8 - 14.0
MARITAL STATUS	Married/Couple	12.8	11.4 - 14.2
	Not Married/Couple	18.9	17.1 - 20.7

CI=Confidence Interval

NA=Not available due to respondent counts of less than 30.

2018 Florida BRFSS Data

Diabetes

Percentage of adults who have ever been told they had diabetes

		Measure	95% CI
ALL	Overall	12.6	11.6 - 13.6
SEX	Men	13.6	12.0 - 15.2
	Women	11.7	10.4 - 13.0
RACE/ETHNICITY	Non-Hisp. White	12.2	11.2 - 13.3
	Non-Hisp. Black	15.4	11.9 - 18.8
	Hispanic	11.8	9.3 - 14.4
SEX BY RACE/ETHNICITY	Non-Hisp. White Men	14.0	12.3 - 15.7
	Non-Hisp. White Women	10.6	9.3 - 11.8
	Non-Hisp. Black Men	16.4	10.6 - 22.2
	Non-Hisp. Black Women	14.5	10.6 - 18.4
	Hispanic Men	10.7	7.0 - 14.4
	Hispanic Women	13.0	9.4 - 16.5
AGE GROUP	18-44	4.0	2.8 - 5.2
	45-64	14.9	12.9 - 16.8
	65 & Older	23.5	21.3 - 25.8
EDUCATION LEVEL	<High School	18.0	14.1 - 21.9
	High School / GED	12.5	10.7 - 14.3
	>High School	11.4	10.2 - 12.6
ANNUAL INCOME	<\$25,000	17.6	15.2 - 20.0
	\$25,000-\$49,999	12.1	9.9 - 14.3
	\$50,000 or More	9.4	8.0 - 10.8
MARITAL STATUS	Married/Couple	12.3	11.0 - 13.7
	Not Married/Couple	13.0	11.5 - 14.5

Percentage of adults who have ever been told they had pre-diabetes

		Measure	95% CI
ALL	Overall	10.8	9.6 - 11.9
SEX	Men	10.7	9.0 - 12.3
	Women	10.9	9.3 - 12.4
RACE/ETHNICITY	Non-Hisp. White	10.8	9.6 - 11.9
	Non-Hisp. Black	12.2	8.7 - 15.7
	Hispanic	10.6	7.5 - 13.8
SEX BY RACE/ETHNICITY	Non-Hisp. White Men	10.2	8.5 - 11.8
	Non-Hisp. White Women	11.3	9.7 - 12.9
	Non-Hisp. Black Men	12.4	7.1 - 17.8
	Non-Hisp. Black Women	12.0	7.4 - 16.6
	Hispanic Men	10.8	6.5 - 15.1
	Hispanic Women	10.5	6.1 - 15.0
AGE GROUP	18-44	6.4	4.6 - 8.2
	45-64	12.8	10.8 - 14.8
	65 & Older	14.4	12.3 - 16.5
EDUCATION LEVEL	<High School	12.4	8.4 - 16.5
	High School / GED	11.0	8.6 - 13.3
	>High School	10.3	9.1 - 11.5
ANNUAL INCOME	<\$25,000	11.5	9.1 - 14.0
	\$25,000-\$49,999	11.7	9.2 - 14.2
	\$50,000 or More	11.0	9.1 - 13.0
MARITAL STATUS	Married/Couple	11.6	10.0 - 13.3
	Not Married/Couple	9.7	8.2 - 11.3

CI=Confidence Interval
 NA=Not available due to respondent counts of less than 30.

2018 Florida BRFSS Data

Diabetes

Percentage of adults that have had a test for high blood sugar or diabetes within the past 3 years

		Measure	95% CI
ALL	Overall	59.2	57.3 - 61.2
SEX	Men	57.3	54.4 - 60.2
	Women	60.9	58.3 - 63.5
RACE/ETHNICITY	Non-Hisp. White	59.8	57.8 - 61.8
	Non-Hisp. Black	54.7	49.0 - 60.5
	Hispanic	62.4	57.3 - 67.4
SEX BY RACE/ETHNICITY	Non-Hisp. White Men	58.7	55.6 - 61.8
	Non-Hisp. White Women	60.7	58.1 - 63.4
	Non-Hisp. Black Men	54.6	46.2 - 63.0
	Non-Hisp. Black Women	54.8	46.9 - 62.7
	Hispanic Men	58.9	51.7 - 66.1
	Hispanic Women	65.7	58.7 - 72.8
AGE GROUP	18-44	46.8	43.4 - 50.1
	45-64	66.4	63.2 - 69.7
	65 & Older	71.6	68.6 - 74.5
EDUCATION LEVEL	<High School	55.6	49.0 - 62.2
	High School / GED	54.6	50.9 - 58.4
	>High School	62.6	60.3 - 64.9
ANNUAL INCOME	<\$25,000	61.3	57.4 - 65.1
	\$25,000-\$49,999	54.9	50.6 - 59.2
	\$50,000 or More	64.1	61.0 - 67.1
MARITAL STATUS	Married/Couple	64.4	61.8 - 67.0
	Not Married/Couple	53.8	50.9 - 56.7

Percentage of adults with diabetes who ever had diabetes self-management education

		Measure	95% CI
ALL	Overall	56.8	52.3 - 61.3
SEX	Men	58.3	51.8 - 64.9
	Women	55.3	49.2 - 61.4
RACE/ETHNICITY	Non-Hisp. White	59.1	54.3 - 63.9
	Non-Hisp. Black	59.1	47.3 - 71.0
	Hispanic	42.9	29.0 - 56.9
SEX BY RACE/ETHNICITY	Non-Hisp. White Men	59.1	51.9 - 66.3
	Non-Hisp. White Women	59.1	52.6 - 65.5
	Non-Hisp. Black Men	68.5	51.4 - 85.5
	Non-Hisp. Black Women	51.9	37.8 - 66.0
	Hispanic Men	42.0	21.5 - 62.6
	Hispanic Women	43.7	25.3 - 62.2
AGE GROUP	18-44	57.3	39.4 - 75.1
	45-64	60.3	52.8 - 67.7
	65 & Older	53.8	48.0 - 59.6
EDUCATION LEVEL	<High School	47.0	33.1 - 61.0
	High School / GED	54.1	46.0 - 62.2
	>High School	62.3	56.5 - 68.1
ANNUAL INCOME	<\$25,000	54.1	46.1 - 62.1
	\$25,000-\$49,999	57.9	48.1 - 67.7
	\$50,000 or More	63.2	55.4 - 71.0
MARITAL STATUS	Married/Couple	55.7	49.6 - 61.8
	Not Married/Couple	58.0	51.1 - 64.9

CI=Confidence Interval
 NA=Not available due to respondent counts of less than 30.

2018 Florida BRFSS Data

Diabetes

Average age at which diabetes was diagnosed

		Measure	95% CI
ALL	Overall	47.5	46.1 - 49.0
SEX	Men	47.8	45.7 - 49.8
	Women	47.3	45.2 - 49.4
RACE/ETHNICITY	Non-Hisp. White	50.2	48.7 - 51.7
	Non-Hisp. Black	43.3	39.2 - 47.4
	Hispanic	44.2	40.4 - 48.1
SEX BY RACE/ETHNICITY	Non-Hisp. White Men	50.1	48.0 - 52.2
	Non-Hisp. White Women	50.3	48.3 - 52.3
	Non-Hisp. Black Men	42.0	35.8 - 48.1
	Non-Hisp. Black Women	44.7	39.0 - 50.5
	Hispanic Men	46.1	40.5 - 51.7
	Hispanic Women	42.8	37.5 - 48.2
AGE GROUP	18-44	26.1	23.6 - 28.6
	45-64	44.6	43.0 - 46.1
	65 & Older	55.9	54.1 - 57.6
EDUCATION LEVEL	<High School	45.4	41.8 - 49.0
	High School / GED	46.3	43.6 - 49.0
	>High School	48.9	47.2 - 50.5
ANNUAL INCOME	<\$25,000	46.2	43.9 - 48.5
	\$25,000-\$49,999	48.2	45.9 - 50.5
	\$50,000 or More	48.3	45.6 - 51.1
MARITAL STATUS	Married/Couple	47.9	46.0 - 49.7
	Not Married/Couple	47.1	44.8 - 49.4

CI=Confidence Interval

NA=Not available due to respondent counts of less than 30.

2018 Florida BRFSS Data

Disability

Percentage of adults who are blind or have serious difficulty seeing, even when wearing glasses

		Measure	95% CI
ALL	Overall	6.1	5.3 - 6.9
SEX	Men	5.1	4.0 - 6.2
	Women	7.0	5.9 - 8.1
RACE/ETHNICITY	Non-Hisp. White	5.3	4.5 - 6.1
	Non-Hisp. Black	6.3	4.2 - 8.5
	Hispanic	7.9	5.6 - 10.2
SEX BY RACE/ETHNICITY	Non-Hisp. White Men	4.5	3.4 - 5.5
	Non-Hisp. White Women	6.1	4.9 - 7.2
	Non-Hisp. Black Men	6.5	3.2 - 9.8
	Non-Hisp. Black Women	6.2	3.4 - 9.0
	Hispanic Men	5.7	2.5 - 8.9
	Hispanic Women	10.0	6.8 - 13.2
AGE GROUP	18-44	4.1	3.0 - 5.2
	45-64	7.3	5.8 - 8.7
	65 & Older	8.0	6.4 - 9.6
EDUCATION LEVEL	<High School	13.5	9.7 - 17.4
	High School / GED	6.0	4.6 - 7.3
	>High School	4.5	3.8 - 5.2
ANNUAL INCOME	<\$25,000	10.5	8.4 - 12.6
	\$25,000-\$49,999	5.5	3.9 - 7.1
	\$50,000 or More	3.3	2.4 - 4.2
MARITAL STATUS	Married/Couple	5.1	4.1 - 6.1
	Not Married/Couple	7.2	6.0 - 8.3

Percentage of adults who are deaf or have serious difficulty hearing

		Measure	95% CI
ALL	Overall	7.3	6.5 - 8.1
SEX	Men	9.4	8.0 - 10.8
	Women	5.4	4.5 - 6.2
RACE/ETHNICITY	Non-Hisp. White	8.9	8.0 - 9.8
	Non-Hisp. Black	4.0	2.2 - 5.9
	Hispanic	5.6	3.4 - 7.9
SEX BY RACE/ETHNICITY	Non-Hisp. White Men	11.4	9.9 - 12.8
	Non-Hisp. White Women	6.5	5.5 - 7.6
	Non-Hisp. Black Men	4.9	1.5 - 8.2
	Non-Hisp. Black Women	3.3	1.4 - 5.2
	Hispanic Men	7.6	3.6 - 11.6
	Hispanic Women	3.8	1.7 - 6.0
AGE GROUP	18-44	2.3	1.4 - 3.1
	45-64	7.9	6.2 - 9.6
	65 & Older	14.7	13.0 - 16.5
EDUCATION LEVEL	<High School	10.7	7.3 - 14.1
	High School / GED	7.8	6.2 - 9.4
	>High School	6.3	5.5 - 7.1
ANNUAL INCOME	<\$25,000	9.5	7.5 - 11.5
	\$25,000-\$49,999	6.1	4.8 - 7.4
	\$50,000 or More	6.5	5.2 - 7.7
MARITAL STATUS	Married/Couple	7.8	6.6 - 9.0
	Not Married/Couple	6.5	5.6 - 7.5

CI=Confidence Interval
 NA=Not available due to respondent counts of less than 30.

2018 Florida BRFSS Data

Disability
Percentage of adults that have serious difficulty concentrating, remembering or making decisions due to a physical, mental, or emotional condition

		Measure	95% CI
ALL	Overall	12.9	11.8 - 14.0
SEX	Men	12.0	10.3 - 13.6
	Women	13.7	12.2 - 15.2
RACE/ETHNICITY	Non-Hisp. White	12.5	11.3 - 13.7
	Non-Hisp. Black	13.7	10.3 - 17.2
	Hispanic	13.5	10.5 - 16.6
SEX BY RACE/ETHNICITY	Non-Hisp. White Men	11.1	9.4 - 12.8
	Non-Hisp. White Women	13.8	12.2 - 15.4
	Non-Hisp. Black Men	12.4	7.7 - 17.0
	Non-Hisp. Black Women	14.9	10.0 - 19.8
	Hispanic Men	13.8	9.1 - 18.4
	Hispanic Women	13.4	9.5 - 17.3
AGE GROUP	18-44	12.9	11.0 - 14.9
	45-64	14.3	12.4 - 16.2
	65 & Older	11.5	9.6 - 13.4
EDUCATION LEVEL	<High School	25.0	20.3 - 29.8
	High School / GED	14.1	11.9 - 16.2
	>High School	9.7	8.5 - 10.8
ANNUAL INCOME	<\$25,000	22.3	19.4 - 25.2
	\$25,000-\$49,999	10.1	8.3 - 11.9
	\$50,000 or More	6.4	5.1 - 7.7
MARITAL STATUS	Married/Couple	9.7	8.3 - 11.0
	Not Married/Couple	16.6	14.8 - 18.4

CI=Confidence Interval
 NA=Not available due to respondent counts of less than 30.

2018 Florida BRFSS Data

Disability

Percentage of adults that have serious difficulty walking or climbing stairs

		Measure	95% CI
ALL	Overall	15.6	14.5 - 16.7
SEX	Men	13.6	12.0 - 15.2
	Women	17.4	15.9 - 19.0
RACE/ETHNICITY	Non-Hisp. White	16.1	14.9 - 17.3
	Non-Hisp. Black	16.8	13.1 - 20.4
	Hispanic	14.0	11.0 - 17.0
SEX BY RACE/ETHNICITY	Non-Hisp. White Men	14.4	12.6 - 16.2
	Non-Hisp. White Women	17.7	16.1 - 19.4
	Non-Hisp. Black Men	15.7	10.2 - 21.2
	Non-Hisp. Black Women	17.6	12.8 - 22.5
	Hispanic Men	10.7	6.6 - 14.8
	Hispanic Women	17.1	12.7 - 21.5
AGE GROUP	18-44	5.1	3.9 - 6.3
	45-64	21.2	18.8 - 23.7
	65 & Older	25.4	23.1 - 27.6
EDUCATION LEVEL	<High School	30.0	24.8 - 35.2
	High School / GED	17.1	15.0 - 19.3
	>High School	11.6	10.5 - 12.7
ANNUAL INCOME	<\$25,000	27.0	24.0 - 30.0
	\$25,000-\$49,999	16.3	13.7 - 18.8
	\$50,000 or More	7.4	6.3 - 8.5
MARITAL STATUS	Married/Couple	13.0	11.6 - 14.5
	Not Married/Couple	18.5	16.7 - 20.3

Percentage of adults that have difficulty dressing or bathing

		Measure	95% CI
ALL	Overall	4.0	3.4 - 4.6
SEX	Men	4.3	3.4 - 5.3
	Women	3.8	3.1 - 4.5
RACE/ETHNICITY	Non-Hisp. White	4.0	3.3 - 4.6
	Non-Hisp. Black	6.1	3.5 - 8.6
	Hispanic	2.8	1.7 - 3.9
SEX BY RACE/ETHNICITY	Non-Hisp. White Men	3.9	2.9 - 4.9
	Non-Hisp. White Women	4.0	3.2 - 4.8
	Non-Hisp. Black Men	7.4	3.1 - 11.7
	Non-Hisp. Black Women	4.9	1.9 - 7.9
	Hispanic Men	3.5	1.5 - 5.6
	Hispanic Women	2.1	1.1 - 3.1
AGE GROUP	18-44	2.2	1.3 - 3.2
	45-64	5.9	4.7 - 7.1
	65 & Older	4.7	3.7 - 5.7
EDUCATION LEVEL	<High School	10.2	6.8 - 13.6
	High School / GED	3.7	2.8 - 4.5
	>High School	2.8	2.3 - 3.4
ANNUAL INCOME	<\$25,000	8.0	6.3 - 9.7
	\$25,000-\$49,999	3.1	2.1 - 4.1
	\$50,000 or More	1.9	1.2 - 2.6
MARITAL STATUS	Married/Couple	3.3	2.6 - 4.0
	Not Married/Couple	4.7	3.8 - 5.7

CI=Confidence Interval
 NA=Not available due to respondent counts of less than 30.

2018 Florida BRFSS Data

Disability

Percentage of adults that have difficulty doing errands alone such as visiting a doctor's office or shopping

		Measure	95% CI
ALL	Overall	7.5	6.6 - 8.3
SEX	Men	5.8	4.7 - 6.9
	Women	9.0	7.8 - 10.2
RACE/ETHNICITY	Non-Hisp. White	8.1	7.1 - 9.0
	Non-Hisp. Black	7.3	4.8 - 9.9
	Hispanic	6.3	4.3 - 8.3
SEX BY RACE/ETHNICITY	Non-Hisp. White Men	6.0	4.7 - 7.3
	Non-Hisp. White Women	10.1	8.7 - 11.5
	Non-Hisp. Black Men	7.3	3.7 - 10.9
	Non-Hisp. Black Women	7.4	3.7 - 11.0
	Hispanic Men	4.8	2.1 - 7.6
	Hispanic Women	7.7	4.8 - 10.7
AGE GROUP	18-44	5.2	4.0 - 6.5
	45-64	8.8	7.3 - 10.3
	65 & Older	9.3	7.7 - 11.0
EDUCATION LEVEL	<High School	13.4	9.6 - 17.2
	High School / GED	9.0	7.4 - 10.7
	>High School	5.4	4.6 - 6.2
ANNUAL INCOME	<\$25,000	13.9	11.8 - 16.1
	\$25,000-\$49,999	6.2	4.7 - 7.7
	\$50,000 or More	3.1	2.2 - 3.9
MARITAL STATUS	Married/Couple	5.5	4.7 - 6.4
	Not Married/Couple	9.7	8.2 - 11.1

Percentage of adults who have any disability

		Measure	95% CI
ALL	Overall	30.3	28.9 - 31.8
SEX	Men	29.0	26.8 - 31.2
	Women	31.6	29.6 - 33.6
RACE/ETHNICITY	Non-Hisp. White	31.4	29.8 - 32.9
	Non-Hisp. Black	30.5	25.9 - 35.0
	Hispanic	29.6	25.6 - 33.7
SEX BY RACE/ETHNICITY	Non-Hisp. White Men	29.7	27.4 - 32.0
	Non-Hisp. White Women	33.0	30.9 - 35.1
	Non-Hisp. Black Men	30.6	23.5 - 37.6
	Non-Hisp. Black Women	30.4	24.4 - 36.4
	Hispanic Men	28.2	22.2 - 34.2
	Hispanic Women	31.1	25.6 - 36.6
AGE GROUP	18-44	20.0	17.7 - 22.2
	45-64	33.6	30.8 - 36.3
	65 & Older	43.3	40.6 - 45.9
EDUCATION LEVEL	<High School	51.5	45.8 - 57.1
	High School / GED	32.4	29.5 - 35.3
	>High School	24.7	23.1 - 26.3
ANNUAL INCOME	<\$25,000	44.9	41.5 - 48.3
	\$25,000-\$49,999	29.2	26.0 - 32.3
	\$50,000 or More	19.3	17.3 - 21.2
MARITAL STATUS	Married/Couple	26.5	24.6 - 28.5
	Not Married/Couple	34.6	32.4 - 36.9

CI=Confidence Interval
 NA=Not available due to respondent counts of less than 30.

Epilepsy

Percentage of adults who have ever been told that they have a seizure disorder or epilepsy

		Measure	95% CI
ALL	Overall	2.2	1.5 - 2.8
SEX	Men	1.9	1.1 - 2.7
	Women	2.4	1.3 - 3.4
RACE/ETHNICITY	Non-Hisp. White	1.8	1.3 - 2.3
	Non-Hisp. Black	1.9	0.6 - 3.2
	Hispanic	3.1	0.6 - 5.6
SEX BY RACE/ETHNICITY	Non-Hisp. White Men	1.7	1.1 - 2.4
	Non-Hisp. White Women	1.9	1.2 - 2.6
	Non-Hisp. Black Men	1.0	0.0 - 2.0
	Non-Hisp. Black Women	2.6	0.5 - 4.8
	Hispanic Men	2.7	0.0 - 5.6
	Hispanic Women	3.5	0.0 - 7.5
AGE GROUP	18-44	1.5	0.9 - 2.1
	45-64	2.8	1.3 - 4.3
	65 & Older	2.0	0.6 - 3.4
EDUCATION LEVEL	<High School	4.4	1.1 - 7.8
	High School / GED	2.2	0.8 - 3.6
	>High School	1.6	1.1 - 2.1
ANNUAL INCOME	<\$25,000	3.3	1.5 - 5.1
	\$25,000-\$49,999	1.5	0.7 - 2.2
	\$50,000 or More	2.0	0.8 - 3.3
MARITAL STATUS	Married/Couple	2.5	1.3 - 3.6
	Not Married/Couple	1.8	1.1 - 2.5

Percentage of adults with seizure disorder or epilepsy who have had at least one seizure in the past year

		Measure	95% CI
ALL	Overall	43.7	26.0 - 61.4
SEX	Men	42.7	22.0 - 63.3
	Women	44.3	17.6 - 71.1
RACE/ETHNICITY	Non-Hisp. White	37.6	24.0 - 51.2
	Non-Hisp. Black	NA	
	Hispanic	NA	
SEX BY RACE/ETHNICITY	Non-Hisp. White Men	34.1	14.1 - 54.1
	Non-Hisp. White Women	40.7	22.2 - 59.3
	Non-Hisp. Black Men	NA	
	Non-Hisp. Black Women	NA	
	Hispanic Men	NA	
	Hispanic Women	NA	
AGE GROUP	18-44	42.1	24.1 - 60.1
	45-64	34.0	12.6 - 55.4
	65 & Older	64.4	45.2 - 83.6
EDUCATION LEVEL	<High School	81.1	64.7 - 97.5
	High School / GED	30.4	8.9 - 52.0
	>High School	32.6	21.9 - 43.2
ANNUAL INCOME	<\$25,000	63.7	45.2 - 82.2
	\$25,000-\$49,999	42.8	16.9 - 68.7
	\$50,000 or More	23.1	4.0 - 42.3
MARITAL STATUS	Married/Couple	44.5	17.2 - 71.8
	Not Married/Couple	42.9	28.4 - 57.4

CI=Confidence Interval
 NA=Not available due to respondent counts of less than 30.

Epilepsy

Percentage of adults with seizure disorder or epilepsy who have seen a neurologist or epilepsy specialist in the past year

		Measure	95% CI
ALL	Overall	44.1	27.0 - 61.2
SEX	Men	41.8	23.1 - 60.5
	Women	45.5	20.2 - 70.8
RACE/ETHNICITY	Non-Hisp. White	37.4	28.2 - 46.6
	Non-Hisp. Black	NA	
	Hispanic	NA	
SEX BY RACE/ETHNICITY	Non-Hisp. White Men	33.0	18.9 - 47.1
	Non-Hisp. White Women	41.0	28.0 - 54.0
	Non-Hisp. Black Men	NA	
	Non-Hisp. Black Women	NA	
	Hispanic Men	NA	
	Hispanic Women	NA	
AGE GROUP	18-44	27.7	14.0 - 41.4
	45-64	34.8	16.6 - 53.1
	65 & Older	72.1	55.6 - 88.6
EDUCATION LEVEL	<High School	70.3	48.3 - 92.2
	High School / GED	20.7	7.1 - 34.2
	>High School	47.4	32.9 - 61.8
ANNUAL INCOME	<\$25,000	64.6	47.7 - 81.5
	\$25,000-\$49,999	36.9	14.3 - 59.5
	\$50,000 or More	25.2	5.0 - 45.4
MARITAL STATUS	Married/Couple	49.7	22.6 - 76.7
	Not Married/Couple	33.8	23.5 - 44.2

2018 Florida BRFSS Data

Fall-Related Injury

Percentage of adults 45 years of age and older who had a fall-related injury in the past 12 months

		Measure	95% CI
ALL	Overall	10.4	9.2 - 11.5
SEX	Men	7.5	6.1 - 9.0
	Women	12.9	11.1 - 14.6
RACE/ETHNICITY	Non-Hisp. White	11.1	9.9 - 12.4
	Non-Hisp. Black	7.8	4.9 - 10.7
	Hispanic	9.1	5.4 - 12.8
SEX BY RACE/ETHNICITY	Non-Hisp. White Men	8.7	6.9 - 10.4
	Non-Hisp. White Women	13.2	11.4 - 15.0
	Non-Hisp. Black Men	6.8	2.6 - 10.9
	Non-Hisp. Black Women	8.7	4.7 - 12.8
	Hispanic Men	4.2	0.5 - 7.9
	Hispanic Women	13.4	7.3 - 19.5
AGE GROUP	45-64	10.8	9.1 - 12.4
	65 & Older	9.9	8.3 - 11.5
EDUCATION LEVEL	<High School	14.5	9.5 - 19.5
	High School / GED	10.7	8.6 - 12.8
	>High School	9.4	8.1 - 10.7
ANNUAL INCOME	<\$25,000	15.2	12.7 - 17.8
	\$25,000-\$49,999	10.8	8.2 - 13.4
	\$50,000 or More	7.2	5.6 - 8.8
MARITAL STATUS	Married/Couple	8.2	6.9 - 9.5
	Not Married/Couple	13.5	11.4 - 15.6

CI=Confidence Interval

NA=Not available due to respondent counts of less than 30.

Hypertension Awareness & Control

Percentage of adults who have ever been told they had hypertension

		Measure	95% CI
ALL	Overall	37.8	36.0 - 39.6
SEX	Men	37.1	34.5 - 39.8
	Women	38.4	36.0 - 40.9
RACE/ETHNICITY	Non-Hisp. White	40.6	38.8 - 42.5
	Non-Hisp. Black	41.3	35.9 - 46.6
	Hispanic	31.2	26.2 - 36.2
SEX BY RACE/ETHNICITY	Non-Hisp. White Men	41.2	38.3 - 44.0
	Non-Hisp. White Women	40.1	37.7 - 42.5
	Non-Hisp. Black Men	40.1	32.0 - 48.3
	Non-Hisp. Black Women	42.2	35.1 - 49.3
	Hispanic Men	28.4	21.6 - 35.2
	Hispanic Women	33.9	26.7 - 41.2
AGE GROUP	18-44	15.5	13.1 - 18.0
	45-64	44.1	40.9 - 47.4
	65 & Older	61.0	58.1 - 63.9
EDUCATION LEVEL	<High School	44.6	38.4 - 50.9
	High School / GED	40.2	36.8 - 43.7
	>High School	34.8	32.7 - 36.9
ANNUAL INCOME	<\$25,000	44.3	40.6 - 48.1
	\$25,000-\$49,999	38.5	34.6 - 42.4
	\$50,000 or More	33.8	31.0 - 36.7
MARITAL STATUS	Married/Couple	38.0	35.6 - 40.5
	Not Married/Couple	37.5	34.9 - 40.1

Percentage of adults with hypertension who currently take high blood pressure medicine

		Measure	95% CI
ALL	Overall	79.1	76.6 - 81.5
SEX	Men	74.9	70.9 - 78.8
	Women	82.7	79.8 - 85.6
RACE/ETHNICITY	Non-Hisp. White	80.0	77.5 - 82.6
	Non-Hisp. Black	82.6	76.8 - 88.4
	Hispanic	73.5	65.1 - 81.9
SEX BY RACE/ETHNICITY	Non-Hisp. White Men	76.3	72.2 - 80.3
	Non-Hisp. White Women	83.4	80.3 - 86.6
	Non-Hisp. Black Men	84.1	76.3 - 91.8
	Non-Hisp. Black Women	81.5	73.2 - 89.7
	Hispanic Men	62.8	48.6 - 77.0
	Hispanic Women	82.2	73.6 - 90.9
AGE GROUP	18-44	40.4	31.5 - 49.2
	45-64	78.2	74.0 - 82.4
	65 & Older	93.4	91.9 - 95.0
EDUCATION LEVEL	<High School	80.2	73.5 - 86.9
	High School / GED	78.7	73.9 - 83.5
	>High School	78.7	75.7 - 81.8
ANNUAL INCOME	<\$25,000	79.7	75.6 - 83.8
	\$25,000-\$49,999	82.8	78.2 - 87.4
	\$50,000 or More	74.6	69.5 - 79.6
MARITAL STATUS	Married/Couple	80.6	77.0 - 84.1
	Not Married/Couple	77.3	73.9 - 80.7

CI=Confidence Interval
 NA=Not available due to respondent counts of less than 30.

2018 Florida BRFSS Data

Kidney Disease

Percentage of adults who have ever been told they had kidney disease

		Measure	95% CI
ALL	Overall	3.5	2.9 - 4.0
SEX	Men	3.3	2.5 - 4.1
	Women	3.6	2.9 - 4.3
RACE/ETHNICITY	Non-Hisp. White	3.7	3.1 - 4.2
	Non-Hisp. Black	3.1	1.6 - 4.6
	Hispanic	3.0	1.6 - 4.4
SEX BY RACE/ETHNICITY	Non-Hisp. White Men	3.4	2.5 - 4.2
	Non-Hisp. White Women	3.9	3.2 - 4.7
	Non-Hisp. Black Men	3.8	1.0 - 6.5
	Non-Hisp. Black Women	2.4	1.0 - 3.9
	Hispanic Men	2.6	0.6 - 4.7
	Hispanic Women	3.4	1.5 - 5.3
AGE GROUP	18-44	1.4	0.8 - 2.1
	45-64	3.4	2.4 - 4.4
	65 & Older	6.7	5.5 - 8.0
EDUCATION LEVEL	<High School	7.6	4.7 - 10.5
	High School / GED	3.3	2.4 - 4.2
	>High School	2.6	2.1 - 3.0
ANNUAL INCOME	<\$25,000	5.7	4.2 - 7.1
	\$25,000-\$49,999	3.3	2.3 - 4.4
	\$50,000 or More	2.2	1.6 - 2.9
MARITAL STATUS	Married/Couple	2.8	2.2 - 3.3
	Not Married/Couple	4.3	3.3 - 5.2

CI=Confidence Interval

NA=Not available due to respondent counts of less than 30.

2018 Florida BRFSS Data

Oral Health

Percentage of adults who have seen a dentist in the past year

		Measure	95% CI
ALL	Overall	65.7	64.1 - 67.2
SEX	Men	63.0	60.7 - 65.3
	Women	68.1	66.1 - 70.1
RACE/ETHNICITY	Non-Hisp. White	67.9	66.3 - 69.5
	Non-Hisp. Black	61.4	56.7 - 66.0
	Hispanic	63.1	59.0 - 67.2
SEX BY RACE/ETHNICITY	Non-Hisp. White Men	66.0	63.6 - 68.5
	Non-Hisp. White Women	69.7	67.7 - 71.8
	Non-Hisp. Black Men	56.0	48.7 - 63.4
	Non-Hisp. Black Women	66.1	60.2 - 72.0
	Hispanic Men	61.8	55.8 - 67.7
	Hispanic Women	64.3	58.6 - 70.0
AGE GROUP	18-44	62.3	59.6 - 64.9
	45-64	64.6	61.8 - 67.3
	65 & Older	71.6	69.2 - 73.9
EDUCATION LEVEL	<High School	50.1	44.6 - 55.6
	High School / GED	59.2	56.2 - 62.3
	>High School	72.3	70.7 - 74.0
ANNUAL INCOME	<\$25,000	50.5	47.0 - 53.9
	\$25,000-\$49,999	60.5	57.0 - 64.0
	\$50,000 or More	78.1	76.0 - 80.1
MARITAL STATUS	Married/Couple	69.6	67.6 - 71.6
	Not Married/Couple	60.9	58.6 - 63.2

Percentage of adults who had a permanent tooth removed because of tooth decay or gum disease

		Measure	95% CI
ALL	Overall	45.8	44.2 - 47.4
SEX	Men	44.7	42.3 - 47.1
	Women	46.9	44.7 - 49.1
RACE/ETHNICITY	Non-Hisp. White	45.6	44.0 - 47.3
	Non-Hisp. Black	49.3	44.4 - 54.1
	Hispanic	45.1	40.7 - 49.5
SEX BY RACE/ETHNICITY	Non-Hisp. White Men	44.7	42.2 - 47.2
	Non-Hisp. White Women	46.5	44.3 - 48.8
	Non-Hisp. Black Men	49.9	42.5 - 57.3
	Non-Hisp. Black Women	48.7	42.3 - 55.1
	Hispanic Men	43.2	36.9 - 49.5
	Hispanic Women	47.0	40.9 - 53.1
AGE GROUP	18-44	27.8	25.3 - 30.3
	45-64	51.6	48.8 - 54.5
	65 & Older	67.7	65.3 - 70.2
EDUCATION LEVEL	<High School	64.4	59.0 - 69.8
	High School / GED	49.8	46.6 - 53.0
	>High School	39.8	38.0 - 41.7
ANNUAL INCOME	<\$25,000	57.3	53.8 - 60.7
	\$25,000-\$49,999	49.3	45.7 - 52.9
	\$50,000 or More	36.3	33.9 - 38.6
MARITAL STATUS	Married/Couple	45.6	43.4 - 47.8
	Not Married/Couple	46.2	43.8 - 48.6

CI=Confidence Interval
 NA=Not available due to respondent counts of less than 30.

2018 Florida BRFSS Data

Overweight & Obesity

Percentage of adults who are overweight

		Measure	95% CI
ALL	Overall	35.3	33.7 - 36.9
SEX	Men	39.7	37.3 - 42.1
	Women	30.8	28.7 - 32.9
RACE/ETHNICITY	Non-Hisp. White	36.0	34.3 - 37.7
	Non-Hisp. Black	36.1	31.2 - 41.1
	Hispanic	34.1	29.6 - 38.6
SEX BY RACE/ETHNICITY	Non-Hisp. White Men	39.3	36.8 - 41.8
	Non-Hisp. White Women	32.7	30.5 - 34.9
	Non-Hisp. Black Men	40.3	32.7 - 47.9
	Non-Hisp. Black Women	32.3	25.9 - 38.7
	Hispanic Men	40.6	33.8 - 47.3
	Hispanic Women	27.6	21.9 - 33.3
AGE GROUP	18-44	33.4	30.6 - 36.2
	45-64	34.1	31.3 - 36.8
	65 & Older	39.0	36.4 - 41.6
EDUCATION LEVEL	<High School	30.0	24.5 - 35.4
	High School / GED	34.7	31.6 - 37.8
	>High School	36.6	34.7 - 38.6
ANNUAL INCOME	<\$25,000	32.3	29.0 - 35.6
	\$25,000-\$49,999	36.0	32.4 - 39.6
	\$50,000 or More	37.4	35.0 - 39.8
MARITAL STATUS	Married/Couple	37.5	35.3 - 39.7
	Not Married/Couple	32.7	30.4 - 35.1

Percentage of adults who are obese

		Measure	95% CI
ALL	Overall	30.7	29.1 - 32.2
SEX	Men	31.1	28.8 - 33.3
	Women	30.2	28.0 - 32.4
RACE/ETHNICITY	Non-Hisp. White	28.0	26.5 - 29.6
	Non-Hisp. Black	37.9	33.1 - 42.8
	Hispanic	33.7	29.0 - 38.4
SEX BY RACE/ETHNICITY	Non-Hisp. White Men	30.4	28.1 - 32.7
	Non-Hisp. White Women	25.7	23.6 - 27.7
	Non-Hisp. Black Men	31.0	24.3 - 37.7
	Non-Hisp. Black Women	44.2	37.5 - 50.8
	Hispanic Men	34.1	27.5 - 40.8
	Hispanic Women	33.1	26.4 - 39.8
AGE GROUP	18-44	28.2	25.5 - 30.8
	45-64	36.4	33.5 - 39.4
	65 & Older	27.8	25.4 - 30.3
EDUCATION LEVEL	<High School	37.1	31.3 - 43.0
	High School / GED	31.9	28.7 - 35.0
	>High School	28.7	26.9 - 30.6
ANNUAL INCOME	<\$25,000	34.3	31.0 - 37.6
	\$25,000-\$49,999	32.0	28.4 - 35.5
	\$50,000 or More	29.7	27.3 - 32.1
MARITAL STATUS	Married/Couple	30.9	28.8 - 33.1
	Not Married/Couple	30.4	28.1 - 32.7

CI=Confidence Interval
 NA=Not available due to respondent counts of less than 30.

2018 Florida BRFSS Data

Overweight & Obesity

Percentage of adults who are overweight or obese

		Measure	95% CI
ALL	Overall	65.9	64.3 - 67.5
SEX	Men	70.8	68.5 - 73.1
	Women	61.0	58.8 - 63.3
RACE/ETHNICITY	Non-Hisp. White	64.0	62.3 - 65.7
	Non-Hisp. Black	74.0	69.5 - 78.6
	Hispanic	67.8	63.1 - 72.4
SEX BY RACE/ETHNICITY	Non-Hisp. White Men	69.7	67.2 - 72.2
	Non-Hisp. White Women	58.3	56.0 - 60.7
	Non-Hisp. Black Men	71.3	64.0 - 78.7
	Non-Hisp. Black Women	76.5	71.0 - 82.0
	Hispanic Men	74.7	68.8 - 80.6
	Hispanic Women	60.7	53.8 - 67.6
AGE GROUP	18-44	61.5	58.6 - 64.5
	45-64	70.5	67.8 - 73.2
	65 & Older	66.9	64.3 - 69.4
EDUCATION LEVEL	<High School	67.1	61.1 - 73.2
	High School / GED	66.6	63.4 - 69.7
	>High School	65.3	63.4 - 67.3
ANNUAL INCOME	<\$25,000	66.6	63.1 - 70.0
	\$25,000-\$49,999	67.9	64.5 - 71.3
	\$50,000 or More	67.1	64.7 - 69.5
MARITAL STATUS	Married/Couple	68.4	66.2 - 70.6
	Not Married/Couple	63.1	60.7 - 65.6

Percentage of adults who have a healthy weight (BMI from 18.5 to 24.9)

		Measure	95% CI
ALL	Overall	32.2	30.6 - 33.8
SEX	Men	28.2	25.9 - 30.5
	Women	36.2	34.0 - 38.5
RACE/ETHNICITY	Non-Hisp. White	33.7	32.0 - 35.4
	Non-Hisp. Black	24.5	20.0 - 29.0
	Hispanic	31.3	26.7 - 35.9
SEX BY RACE/ETHNICITY	Non-Hisp. White Men	29.1	26.6 - 31.6
	Non-Hisp. White Women	38.4	36.0 - 40.7
	Non-Hisp. Black Men	27.7	20.3 - 35.0
	Non-Hisp. Black Women	21.7	16.4 - 26.9
	Hispanic Men	24.7	18.8 - 30.6
	Hispanic Women	38.1	31.2 - 45.0
AGE GROUP	18-44	36.2	33.2 - 39.1
	45-64	28.1	25.5 - 30.8
	65 & Older	31.3	28.8 - 33.9
EDUCATION LEVEL	<High School	31.5	25.5 - 37.6
	High School / GED	31.0	28.0 - 34.1
	>High School	33.0	31.0 - 34.9
ANNUAL INCOME	<\$25,000	30.5	27.0 - 33.9
	\$25,000-\$49,999	30.2	26.9 - 33.6
	\$50,000 or More	31.9	29.5 - 34.3
MARITAL STATUS	Married/Couple	30.5	28.4 - 32.7
	Not Married/Couple	34.3	31.8 - 36.7

CI=Confidence Interval
 NA=Not available due to respondent counts of less than 30.

2018 Florida BRFSS Data

Cancer Screening/Breast

Percentage of women 40 years of age and older who received a mammogram in the past year

		Measure	95% CI
ALL	Overall	59.5	57.0 - 62.1
SEX	Women	59.5	57.0 - 62.1
RACE/ETHNICITY	Non-Hisp. White	57.9	55.4 - 60.4
	Non-Hisp. Black	62.7	54.0 - 71.4
	Hispanic	64.7	56.8 - 72.6
SEX BY RACE/ETHNICITY	Non-Hisp. White Women	57.9	55.4 - 60.4
	Non-Hisp. Black Women	62.7	54.0 - 71.4
	Hispanic Women	64.7	56.8 - 72.6
AGE GROUP	18-44	47.1	36.6 - 57.5
	45-64	60.8	57.0 - 64.6
	65 & Older	61.4	58.0 - 64.9
EDUCATION LEVEL	<High School	57.5	48.0 - 67.0
	High School / GED	60.5	55.5 - 65.5
	>High School	59.5	56.5 - 62.5
ANNUAL INCOME	<\$25,000	48.1	42.8 - 53.4
	\$25,000-\$49,999	60.6	55.1 - 66.0
	\$50,000 or More	65.0	60.9 - 69.0
MARITAL STATUS	Married/Couple	63.8	60.3 - 67.2
	Not Married/Couple	54.4	50.7 - 58.1

Percentage of women aged 50 to 74 who had a mammogram in the past 2 years

		Measure	95% CI
SEX	Women	81.4	79.2 - 83.6
RACE/ETHNICITY	Non-Hisp. White	79.7	77.3 - 82.1
	Non-Hisp. Black	83.1	74.5 - 91.6
	Hispanic	88.5	82.2 - 94.8
SEX BY RACE/ETHNICITY	Non-Hisp. White Women	79.7	77.3 - 82.1
	Non-Hisp. Black Women	83.1	74.5 - 91.6
	Hispanic Women	88.5	82.2 - 94.8
AGE GROUP	45-64	79.2	76.1 - 82.3
	65 & Older	84.9	82.0 - 87.9
EDUCATION LEVEL	<High School	79.7	70.9 - 88.5
	High School / GED	80.6	75.9 - 85.3
	>High School	82.1	79.5 - 84.6
ANNUAL INCOME	<\$25,000	74.4	69.0 - 79.8
	\$25,000-\$49,999	79.4	74.4 - 84.4
	\$50,000 or More	85.4	82.4 - 88.5
MARITAL STATUS	Married/Couple	82.6	79.7 - 85.5
	Not Married/Couple	79.8	76.3 - 83.3

CI=Confidence Interval
 NA=Not available due to respondent counts of less than 30.

Cancer Screening/Cervical

Percentage of women 18 years of age and older who received a Pap test in the past year

		Measure	95% CI
ALL	Overall	50.4	47.7 - 53.1
SEX	Women	50.4	47.7 - 53.1
RACE/ETHNICITY	Non-Hisp. White	45.6	42.8 - 48.4
	Non-Hisp. Black	56.3	48.6 - 63.9
	Hispanic	58.2	51.5 - 64.8
SEX BY RACE/ETHNICITY	Non-Hisp. White Women	45.6	42.8 - 48.4
	Non-Hisp. Black Women	56.3	48.6 - 63.9
	Hispanic Women	58.2	51.5 - 64.8
AGE GROUP	18-44	54.4	50.2 - 58.5
	45-64	54.7	50.1 - 59.3
	65 & Older	33.4	28.3 - 38.5
EDUCATION LEVEL	<High School	53.9	44.8 - 63.0
	High School / GED	46.8	41.1 - 52.6
	>High School	51.4	48.2 - 54.6
ANNUAL INCOME	<\$25,000	48.2	42.6 - 53.7
	\$25,000-\$49,999	45.8	40.1 - 51.5
	\$50,000 or More	56.8	52.5 - 61.0
MARITAL STATUS	Married/Couple	55.6	52.0 - 59.3
	Not Married/Couple	45.0	41.1 - 48.9

Percentage of women aged 21 to 65 who received a Pap test in the past 3 years

		Measure	95% CI
ALL	Overall	79.6	77.2 - 82.1
SEX	Women	79.6	77.2 - 82.1
RACE/ETHNICITY	Non-Hisp. White	79.2	76.3 - 82.1
	Non-Hisp. Black	79.1	72.1 - 86.1
	Hispanic	84.3	79.3 - 89.2
SEX BY RACE/ETHNICITY	Non-Hisp. White Women	79.2	76.3 - 82.1
	Non-Hisp. Black Women	79.1	72.1 - 86.1
	Hispanic Women	84.3	79.3 - 89.2
AGE GROUP	18-44	79.6	76.2 - 82.9
	45-64	80.0	76.4 - 83.7
	65 & Older	74.2	56.4 - 92.0
EDUCATION LEVEL	<High School	71.6	62.3 - 80.9
	High School / GED	75.8	70.1 - 81.4
	>High School	82.4	79.7 - 85.2
ANNUAL INCOME	<\$25,000	71.0	65.4 - 76.6
	\$25,000-\$49,999	77.3	71.9 - 82.6
	\$50,000 or More	86.9	83.6 - 90.2
MARITAL STATUS	Married/Couple	84.4	81.6 - 87.2
	Not Married/Couple	74.3	70.3 - 78.4

CI=Confidence Interval
 NA=Not available due to respondent counts of less than 30.

2018 Florida BRFSS Data

Cancer Screening/Cervical

Percentage of women who have had a hysterectomy

		Measure	95% CI
ALL	Overall	21.3	19.7 - 22.8
SEX	Women	21.3	19.7 - 22.8
RACE/ETHNICITY	Non-Hisp. White	26.6	24.7 - 28.5
	Non-Hisp. Black	19.7	14.9 - 24.5
	Hispanic	10.7	7.6 - 13.8
SEX BY RACE/ETHNICITY	Non-Hisp. White Women	26.6	24.7 - 28.5
	Non-Hisp. Black Women	19.7	14.9 - 24.5
	Hispanic Women	10.7	7.6 - 13.8
AGE GROUP	18-44	3.9	2.7 - 5.2
	45-64	22.4	19.6 - 25.3
	65 & Older	43.4	40.0 - 46.8
EDUCATION LEVEL	<High School	19.8	14.2 - 25.5
	High School / GED	24.2	21.0 - 27.3
	>High School	20.1	18.3 - 22.0
ANNUAL INCOME	<\$25,000	21.9	18.7 - 25.1
	\$25,000-\$49,999	21.2	18.0 - 24.5
	\$50,000 or More	19.4	16.9 - 21.9
MARITAL STATUS	Married/Couple	21.2	19.0 - 23.3
	Not Married/Couple	21.2	19.0 - 23.5

Percentage of women 18 years of age and older who received a HPV test in the past 5 years

		Measure	95% CI
ALL	Overall	86.1	83.8 - 88.4
SEX	Women	86.1	83.8 - 88.4
RACE/ETHNICITY	Non-Hisp. White	80.6	77.6 - 83.7
	Non-Hisp. Black	97.0	95.0 - 99.0
	Hispanic	88.4	82.7 - 94.1
SEX BY RACE/ETHNICITY	Non-Hisp. White Women	80.6	77.6 - 83.7
	Non-Hisp. Black Women	97.0	95.0 - 99.0
	Hispanic Women	88.4	82.7 - 94.1
AGE GROUP	18-44	91.0	88.2 - 93.8
	45-64	85.1	81.2 - 89.0
	65 & Older	66.3	57.3 - 75.2
EDUCATION LEVEL	<High School	87.8	80.4 - 95.3
	High School / GED	82.8	76.7 - 88.8
	>High School	87.2	84.6 - 89.7
ANNUAL INCOME	<\$25,000	82.0	76.2 - 87.8
	\$25,000-\$49,999	85.0	80.4 - 89.5
	\$50,000 or More	89.5	86.8 - 92.1
MARITAL STATUS	Married/Couple	86.3	83.4 - 89.2
	Not Married/Couple	85.8	82.0 - 89.6

CI=Confidence Interval
 NA=Not available due to respondent counts of less than 30.

2018 Florida BRFSS Data

Cancer Screening/Colorectal

Percentage of adults 50 years of age and older who received a blood stool test in the past year

		Measure	95% CI
ALL	Overall	17.9	16.2 - 19.6
SEX	Men	17.8	15.2 - 20.4
	Women	18.0	15.8 - 20.2
RACE/ETHNICITY	Non-Hisp. White	17.1	15.5 - 18.7
	Non-Hisp. Black	21.4	15.6 - 27.2
	Hispanic	19.9	13.6 - 26.2
SEX BY RACE/ETHNICITY	Non-Hisp. White Men	16.2	14.0 - 18.4
	Non-Hisp. White Women	17.8	15.6 - 20.1
	Non-Hisp. Black Men	25.6	15.9 - 35.4
	Non-Hisp. Black Women	17.8	11.0 - 24.5
	Hispanic Men	20.5	10.2 - 30.8
	Hispanic Women	19.4	11.6 - 27.1
AGE GROUP	45-64	13.5	11.1 - 15.9
	65 & Older	22.1	19.8 - 24.4
EDUCATION LEVEL	<High School	18.6	12.6 - 24.6
	High School / GED	17.0	14.2 - 19.7
	>High School	17.9	15.8 - 19.9
ANNUAL INCOME	<\$25,000	22.1	18.4 - 25.8
	\$25,000-\$49,999	19.1	15.0 - 23.3
	\$50,000 or More	13.1	11.1 - 15.1
MARITAL STATUS	Married/Couple	16.6	14.6 - 18.6
	Not Married/Couple	19.7	16.9 - 22.5

Percentage of adults 50 years of age and older who have ever had a sigmoidoscopy or colonoscopy in the past 5 years

		Measure	95% CI
ALL	Overall	54.7	52.6 - 56.7
SEX	Men	54.4	51.2 - 57.6
	Women	54.9	52.2 - 57.6
RACE/ETHNICITY	Non-Hisp. White	57.2	55.2 - 59.2
	Non-Hisp. Black	52.6	45.2 - 60.0
	Hispanic	46.7	39.1 - 54.2
SEX BY RACE/ETHNICITY	Non-Hisp. White Men	57.8	54.8 - 60.9
	Non-Hisp. White Women	56.6	53.9 - 59.2
	Non-Hisp. Black Men	46.6	35.5 - 57.8
	Non-Hisp. Black Women	57.8	48.1 - 67.5
	Hispanic Men	46.7	35.0 - 58.4
	Hispanic Women	46.6	36.9 - 56.4
AGE GROUP	45-64	47.2	44.0 - 50.3
	65 & Older	62.0	59.4 - 64.6
EDUCATION LEVEL	<High School	39.9	32.5 - 47.3
	High School / GED	54.3	50.4 - 58.2
	>High School	58.1	55.6 - 60.6
ANNUAL INCOME	<\$25,000	48.6	44.3 - 53.0
	\$25,000-\$49,999	52.9	48.1 - 57.6
	\$50,000 or More	60.9	57.7 - 64.1
MARITAL STATUS	Married/Couple	59.0	56.2 - 61.7
	Not Married/Couple	48.9	45.8 - 52.1

CI=Confidence Interval
 NA=Not available due to respondent counts of less than 30.

2018 Florida BRFSS Data

Cancer Screening/Colorectal

Percentage of adults 50 years of age and older who have ever had a blood stool test

		Measure	95% CI
ALL	Overall	36.6	34.6 - 38.6
SEX	Men	35.9	32.9 - 38.9
	Women	37.2	34.6 - 39.8
RACE/ETHNICITY	Non-Hisp. White	38.3	36.4 - 40.3
	Non-Hisp. Black	37.0	30.1 - 44.0
	Hispanic	29.4	22.5 - 36.4
SEX BY RACE/ETHNICITY	Non-Hisp. White Men	37.5	34.6 - 40.4
	Non-Hisp. White Women	39.0	36.4 - 41.7
	Non-Hisp. Black Men	37.8	27.0 - 48.6
	Non-Hisp. Black Women	36.3	27.4 - 45.3
	Hispanic Men	29.5	18.4 - 40.6
	Hispanic Women	29.4	20.6 - 38.2
AGE GROUP	45-64	27.9	25.1 - 30.8
	65 & Older	44.9	42.2 - 47.5
EDUCATION LEVEL	<High School	27.7	21.2 - 34.2
	High School / GED	34.3	30.7 - 37.9
	>High School	39.6	37.1 - 42.0
ANNUAL INCOME	<\$25,000	36.9	32.7 - 41.0
	\$25,000-\$49,999	38.7	34.1 - 43.3
	\$50,000 or More	33.8	30.9 - 36.6
MARITAL STATUS	Married/Couple	36.2	33.6 - 38.7
	Not Married/Couple	37.3	34.2 - 40.4

Percentage of adults 50 years of age and older who have ever had a sigmoidoscopy or colonoscopy

		Measure	95% CI
ALL	Overall	71.5	69.5 - 73.5
SEX	Men	71.5	68.4 - 74.7
	Women	71.4	68.8 - 74.0
RACE/ETHNICITY	Non-Hisp. White	76.7	75.0 - 78.4
	Non-Hisp. Black	63.4	56.1 - 70.8
	Hispanic	57.2	49.6 - 64.8
SEX BY RACE/ETHNICITY	Non-Hisp. White Men	77.9	75.4 - 80.5
	Non-Hisp. White Women	75.7	73.3 - 78.0
	Non-Hisp. Black Men	58.8	47.6 - 70.0
	Non-Hisp. Black Women	67.6	57.9 - 77.3
	Hispanic Men	55.8	43.8 - 67.7
	Hispanic Women	58.4	48.7 - 68.2
AGE GROUP	45-64	61.1	57.9 - 64.2
	65 & Older	81.4	79.1 - 83.7
EDUCATION LEVEL	<High School	53.0	45.3 - 60.7
	High School / GED	68.4	64.8 - 72.0
	>High School	77.1	74.9 - 79.4
ANNUAL INCOME	<\$25,000	62.0	57.8 - 66.2
	\$25,000-\$49,999	72.3	67.6 - 77.0
	\$50,000 or More	78.6	75.8 - 81.5
MARITAL STATUS	Married/Couple	75.3	72.8 - 77.9
	Not Married/Couple	66.4	63.1 - 69.6

CI=Confidence Interval

NA=Not available due to respondent counts of less than 30.

Cancer Screening/Colorectal**Percentage of adults aged 50 to 75 who have had a colorectal screening based on the most recent clinical guidelines**

		Measure	95% CI
ALL	Overall	70.4	68.2 - 72.6
SEX	Men	70.0	66.5 - 73.4
	Women	70.8	67.8 - 73.7
RACE/ETHNICITY	Non-Hisp. White	74.6	72.6 - 76.7
	Non-Hisp. Black	61.4	53.2 - 69.6
	Hispanic	61.4	53.2 - 69.7
SEX BY RACE/ETHNICITY	Non-Hisp. White Men	75.1	72.1 - 78.2
	Non-Hisp. White Women	74.1	71.3 - 76.8
	Non-Hisp. Black Men	58.8	46.5 - 71.0
	Non-Hisp. Black Women	63.8	52.7 - 74.9
	Hispanic Men	56.8	43.2 - 70.3
	Hispanic Women	65.1	55.0 - 75.3
AGE GROUP	45-64	61.8	58.6 - 65.0
	65 & Older	84.0	81.5 - 86.5
EDUCATION LEVEL	<High School	47.8	39.1 - 56.4
	High School / GED	67.9	63.5 - 72.3
	>High School	75.8	73.4 - 78.2
ANNUAL INCOME	<\$25,000	62.3	57.6 - 67.1
	\$25,000-\$49,999	70.9	65.7 - 76.1
	\$50,000 or More	75.9	72.6 - 79.2
MARITAL STATUS	Married/Couple	75.0	72.3 - 77.7
	Not Married/Couple	63.9	60.1 - 67.7

Cancer Screening/Prostate

Percentage of men 50 years of age and older who received a PSA test in the past 2 years

		Measure	95% CI
ALL	Overall	48.3	45.0 - 51.5
SEX	Men	48.3	45.0 - 51.5
RACE/ETHNICITY	Non-Hisp. White	51.0	47.8 - 54.2
	Non-Hisp. Black	39.0	28.0 - 50.0
	Hispanic	47.1	35.3 - 58.9
SEX BY RACE/ETHNICITY	Non-Hisp. White Men	51.0	47.8 - 54.2
	Non-Hisp. Black Men	39.0	28.0 - 50.0
	Hispanic Men	47.1	35.3 - 58.9
AGE GROUP	45-64	34.4	29.9 - 38.9
	65 & Older	61.8	57.8 - 65.8
EDUCATION LEVEL	<High School	32.2	21.2 - 43.2
	High School / GED	44.7	38.3 - 51.0
	>High School	53.7	49.9 - 57.5
ANNUAL INCOME	<\$25,000	31.5	24.7 - 38.3
	\$25,000-\$49,999	47.1	39.7 - 54.4
	\$50,000 or More	55.1	50.4 - 59.8
MARITAL STATUS	Married/Couple	54.3	50.2 - 58.4
	Not Married/Couple	36.8	31.9 - 41.7

Percentage of men 50 years of age and older who have ever had a PSA test

		Measure	95% CI
ALL	Overall	61.9	58.7 - 65.1
SEX	Men	61.9	58.7 - 65.1
RACE/ETHNICITY	Non-Hisp. White	64.7	61.6 - 67.8
	Non-Hisp. Black	57.0	45.7 - 68.3
	Hispanic	58.1	46.7 - 69.5
SEX BY RACE/ETHNICITY	Non-Hisp. White Men	64.7	61.6 - 67.8
	Non-Hisp. Black Men	57.0	45.7 - 68.3
	Hispanic Men	58.1	46.7 - 69.5
AGE GROUP	45-64	48.0	43.1 - 52.9
	65 & Older	75.3	71.7 - 78.9
EDUCATION LEVEL	<High School	43.2	31.9 - 54.4
	High School / GED	59.1	52.9 - 65.3
	>High School	67.8	64.3 - 71.4
ANNUAL INCOME	<\$25,000	46.2	39.0 - 53.3
	\$25,000-\$49,999	61.7	54.7 - 68.7
	\$50,000 or More	69.1	64.5 - 73.8
MARITAL STATUS	Married/Couple	68.3	64.5 - 72.1
	Not Married/Couple	50.0	44.7 - 55.2

CI=Confidence Interval
 NA=Not available due to respondent counts of less than 30.

Clinical Breast Exam

Percentage of women 18 years of age and older who have ever had a clinical breast exam

		Measure	95% CI
SEX	Women	85.3	83.5 - 87.1
RACE/ETHNICITY	Non-Hisp. White	90.2	88.6 - 91.9
	Non-Hisp. Black	79.9	74.2 - 85.6
	Hispanic	79.0	73.8 - 84.3
SEX BY RACE/ETHNICITY	Non-Hisp. White Women	90.2	88.6 - 91.9
	Non-Hisp. Black Women	79.9	74.2 - 85.6
	Hispanic Women	79.0	73.8 - 84.3
AGE GROUP	18-44	77.7	74.1 - 81.4
	45-64	92.2	89.8 - 94.6
	65 & Older	86.8	83.6 - 90.1
EDUCATION LEVEL	<High School	73.0	65.3 - 80.8
	High School / GED	83.5	80.1 - 87.0
	>High School	89.0	87.1 - 91.0
ANNUAL INCOME	<\$25,000	81.9	78.2 - 85.6
	\$25,000-\$49,999	83.2	79.2 - 87.2
	\$50,000 or More	94.0	92.0 - 96.0
MARITAL STATUS	Married/Couple	89.3	87.0 - 91.5
	Not Married/Couple	81.3	78.4 - 84.1

Percentage of women 18 years of age and older who have had a clinical breast exam in the past year

		Measure	95% CI
SEX	Women	56.1	53.6 - 58.6
RACE/ETHNICITY	Non-Hisp. White	55.4	52.8 - 57.9
	Non-Hisp. Black	56.9	49.6 - 64.2
	Hispanic	58.1	51.1 - 65.1
SEX BY RACE/ETHNICITY	Non-Hisp. White Women	55.4	52.8 - 57.9
	Non-Hisp. Black Women	56.9	49.6 - 64.2
	Hispanic Women	58.1	51.1 - 65.1
AGE GROUP	18-44	51.2	46.4 - 55.9
	45-64	64.4	60.4 - 68.4
	65 & Older	52.2	48.3 - 56.1
EDUCATION LEVEL	<High School	44.9	36.1 - 53.6
	High School / GED	54.0	49.0 - 59.0
	>High School	59.7	56.8 - 62.6
ANNUAL INCOME	<\$25,000	48.4	43.3 - 53.5
	\$25,000-\$49,999	52.0	46.7 - 57.3
	\$50,000 or More	67.9	64.0 - 71.8
MARITAL STATUS	Married/Couple	60.0	56.5 - 63.4
	Not Married/Couple	52.0	48.4 - 55.6

CI=Confidence Interval
 NA=Not available due to respondent counts of less than 30.

Clinical Breast Exam

Percentage of women 40 years of age and older who have had a clinical breast exam in the past year

		Measure	95% CI
SEX	Women	58.5	55.7 - 61.3
RACE/ETHNICITY	Non-Hisp. White	57.3	54.6 - 60.0
	Non-Hisp. Black	58.6	49.3 - 67.9
	Hispanic	63.4	54.0 - 72.8
SEX BY RACE/ETHNICITY	Non-Hisp. White Women	57.3	54.6 - 60.0
	Non-Hisp. Black Women	58.6	49.3 - 67.9
	Hispanic Women	63.4	54.0 - 72.8
AGE GROUP	18-44	56.6	45.3 - 67.8
	45-64	64.4	60.4 - 68.4
	65 & Older	52.2	48.3 - 56.1
EDUCATION LEVEL	<High School	47.1	36.1 - 58.1
	High School / GED	58.9	53.3 - 64.4
	>High School	60.7	57.4 - 63.9
ANNUAL INCOME	<\$25,000	47.4	41.7 - 53.2
	\$25,000-\$49,999	56.9	51.1 - 62.8
	\$50,000 or More	69.0	64.7 - 73.2
MARITAL STATUS	Married/Couple	62.5	58.5 - 66.4
	Not Married/Couple	53.8	49.8 - 57.7

Percentage of women aged 50 to 64 who have had a clinical breast exam in the past year

		Measure	95% CI
SEX	Women	63.4	59.1 - 67.7
RACE/ETHNICITY	Non-Hisp. White	61.0	56.5 - 65.4
	Non-Hisp. Black	69.3	55.5 - 83.1
	Hispanic	69.0	56.1 - 81.8
SEX BY RACE/ETHNICITY	Non-Hisp. White Women	61.0	56.5 - 65.4
	Non-Hisp. Black Women	69.3	55.5 - 83.1
	Hispanic Women	69.0	56.1 - 81.8
AGE GROUP	45-64	63.4	59.1 - 67.7
EDUCATION LEVEL	<High School	50.8	33.9 - 67.8
	High School / GED	61.3	52.6 - 70.0
	>High School	66.3	61.1 - 71.5
ANNUAL INCOME	<\$25,000	49.3	40.5 - 58.1
	\$25,000-\$49,999	64.6	54.7 - 74.5
	\$50,000 or More	71.9	65.6 - 78.1
MARITAL STATUS	Married/Couple	66.2	60.6 - 71.8
	Not Married/Couple	60.0	53.4 - 66.6

CI=Confidence Interval
 NA=Not available due to respondent counts of less than 30.

2018 Florida BRFSS Data

HIV/AIDS Screening

Percentage of adults less than 65 years old who have ever been tested for HIV

		Measure	95% CI
ALL	Overall	53.6	51.5 - 55.7
SEX	Men	50.5	47.5 - 53.5
	Women	56.7	53.8 - 59.5
RACE/ETHNICITY	Non-Hisp. White	48.0	45.7 - 50.4
	Non-Hisp. Black	70.6	65.5 - 75.8
	Hispanic	55.3	50.3 - 60.3
SEX BY RACE/ETHNICITY	Non-Hisp. White Men	46.8	43.4 - 50.2
	Non-Hisp. White Women	49.2	46.0 - 52.4
	Non-Hisp. Black Men	64.2	55.7 - 72.6
	Non-Hisp. Black Women	76.4	70.4 - 82.4
	Hispanic Men	51.5	44.3 - 58.7
	Hispanic Women	59.0	52.0 - 66.0
AGE GROUP	18-44	58.0	55.1 - 60.9
	45-64	47.8	44.8 - 50.7
EDUCATION LEVEL	<High School	50.3	43.3 - 57.4
	High School / GED	50.3	46.2 - 54.4
	>High School	56.0	53.5 - 58.5
ANNUAL INCOME	<\$25,000	57.2	52.9 - 61.5
	\$25,000-\$49,999	59.3	54.8 - 63.8
	\$50,000 or More	51.6	48.5 - 54.8
MARITAL STATUS	Married/Couple	52.4	49.6 - 55.3
	Not Married/Couple	55.2	52.1 - 58.3

Percentage of adults less than 65 years old who had an HIV test in the past 12 months

		Measure	95% CI
ALL	Overall	21.1	19.2 - 23.0
SEX	Men	20.3	17.6 - 23.1
	Women	21.8	19.1 - 24.5
RACE/ETHNICITY	Non-Hisp. White	15.9	14.0 - 17.9
	Non-Hisp. Black	40.1	33.8 - 46.5
	Hispanic	20.7	16.2 - 25.2
SEX BY RACE/ETHNICITY	Non-Hisp. White Men	17.3	14.4 - 20.2
	Non-Hisp. White Women	14.5	12.0 - 17.1
	Non-Hisp. Black Men	33.3	23.8 - 42.7
	Non-Hisp. Black Women	45.9	37.3 - 54.5
	Hispanic Men	20.7	14.4 - 27.1
	Hispanic Women	20.6	14.3 - 27.0
AGE GROUP	18-44	26.8	23.9 - 29.6
	45-64	13.5	11.1 - 15.9
EDUCATION LEVEL	<High School	20.6	13.8 - 27.5
	High School / GED	20.3	16.6 - 24.0
	>High School	21.6	19.3 - 23.9
ANNUAL INCOME	<\$25,000	27.5	23.1 - 31.8
	\$25,000-\$49,999	23.6	19.0 - 28.2
	\$50,000 or More	17.7	15.1 - 20.4
MARITAL STATUS	Married/Couple	17.4	14.8 - 19.9
	Not Married/Couple	25.1	22.1 - 28.0

CI=Confidence Interval

NA=Not available due to respondent counts of less than 30.

2018 Florida BRFSS Data

HIV/AIDS Screening

Percentage of adults who have ever been tested for HIV

		Measure	95% CI
ALL	Overall	45.0	43.3 - 46.7
SEX	Men	44.3	41.8 - 46.8
	Women	45.7	43.4 - 48.0
RACE/ETHNICITY	Non-Hisp. White	37.0	35.3 - 38.8
	Non-Hisp. Black	67.2	62.5 - 71.8
	Hispanic	51.6	47.0 - 56.1
SEX BY RACE/ETHNICITY	Non-Hisp. White Men	38.3	35.7 - 41.0
	Non-Hisp. White Women	35.7	33.4 - 38.0
	Non-Hisp. Black Men	62.3	54.7 - 69.9
	Non-Hisp. Black Women	71.3	65.7 - 76.8
	Hispanic Men	49.2	42.6 - 55.8
	Hispanic Women	53.9	47.6 - 60.3
AGE GROUP	18-44	58.0	55.1 - 60.9
	45-64	47.8	44.8 - 50.7
	65 & Older	21.6	19.0 - 24.2
EDUCATION LEVEL	<High School	43.3	37.5 - 49.2
	High School / GED	41.4	38.1 - 44.7
	>High School	47.4	45.4 - 49.4
ANNUAL INCOME	<\$25,000	49.6	46.1 - 53.2
	\$25,000-\$49,999	47.7	44.0 - 51.5
	\$50,000 or More	44.4	41.8 - 47.0
MARITAL STATUS	Married/Couple	42.8	40.5 - 45.0
	Not Married/Couple	47.9	45.3 - 50.4

*CI=Confidence Interval
NA=Not available due to respondent counts of less than 30.*

2018 Florida BRFSS Data

Immunization

Percentage of adults who received a flu shot in the past year

		Measure	95% CI
ALL	Overall	30.7	29.2 - 32.1
SEX	Men	30.4	28.3 - 32.6
	Women	30.9	28.9 - 32.8
RACE/ETHNICITY	Non-Hisp. White	36.3	34.7 - 37.9
	Non-Hisp. Black	21.5	17.8 - 25.3
	Hispanic	22.9	19.2 - 26.6
SEX BY RACE/ETHNICITY	Non-Hisp. White Men	36.4	34.0 - 38.9
	Non-Hisp. White Women	36.2	34.0 - 38.3
	Non-Hisp. Black Men	20.3	14.7 - 26.0
	Non-Hisp. Black Women	22.6	17.5 - 27.6
	Hispanic Men	22.7	17.2 - 28.1
	Hispanic Women	23.2	18.2 - 28.3
AGE GROUP	18-44	18.5	16.4 - 20.6
	45-64	27.7	25.3 - 30.2
	65 & Older	52.8	50.2 - 55.4
EDUCATION LEVEL	<High School	25.6	20.7 - 30.4
	High School / GED	27.9	25.2 - 30.6
	>High School	33.2	31.4 - 34.9
ANNUAL INCOME	<\$25,000	28.6	25.5 - 31.7
	\$25,000-\$49,999	28.4	25.4 - 31.3
	\$50,000 or More	34.0	31.7 - 36.3
MARITAL STATUS	Married/Couple	33.1	31.1 - 35.1
	Not Married/Couple	27.9	25.9 - 30.0

Percentage of adults 65 years of age and older who received a flu shot in the past year

		Measure	95% CI
ALL	Overall	52.8	50.1 - 55.4
SEX	Men	56.2	52.3 - 60.2
	Women	49.9	46.4 - 53.4
RACE/ETHNICITY	Non-Hisp. White	56.4	53.8 - 58.9
	Non-Hisp. Black	37.3	28.1 - 46.5
	Hispanic	44.6	33.6 - 55.5
SEX BY RACE/ETHNICITY	Non-Hisp. White Men	59.4	55.6 - 63.1
	Non-Hisp. White Women	53.9	50.5 - 57.2
	Non-Hisp. Black Men	30.0	16.2 - 43.8
	Non-Hisp. Black Women	43.3	30.9 - 55.6
	Hispanic Men	56.3	40.3 - 72.3
	Hispanic Women	34.8	20.8 - 48.8
AGE GROUP	65 & Older	52.8	50.2 - 55.4
EDUCATION LEVEL	<High School	49.1	38.9 - 59.3
	High School / GED	50.8	46.1 - 55.6
	>High School	55.1	52.1 - 58.0
ANNUAL INCOME	<\$25,000	51.2	45.3 - 57.1
	\$25,000-\$49,999	49.3	43.9 - 54.7
	\$50,000 or More	58.2	54.2 - 62.1
MARITAL STATUS	Married/Couple	55.3	51.7 - 58.8
	Not Married/Couple	49.7	45.8 - 53.6

CI=Confidence Interval
 NA=Not available due to respondent counts of less than 30.

2018 Florida BRFSS Data

Immunization

Percentage of adults who have ever received a pneumonia vaccination

		Measure	95% CI
ALL	Overall	32.6	31.1 - 34.1
SEX	Men	31.8	29.5 - 34.0
	Women	33.4	31.4 - 35.5
RACE/ETHNICITY	Non-Hisp. White	39.7	38.0 - 41.3
	Non-Hisp. Black	21.3	17.3 - 25.3
	Hispanic	23.8	19.8 - 27.8
SEX BY RACE/ETHNICITY	Non-Hisp. White Men	38.2	35.6 - 40.7
	Non-Hisp. White Women	41.0	38.7 - 43.2
	Non-Hisp. Black Men	20.3	14.0 - 26.7
	Non-Hisp. Black Women	22.1	17.2 - 27.1
	Hispanic Men	23.5	17.9 - 29.0
	Hispanic Women	24.1	18.3 - 29.8
AGE GROUP	18-44	15.7	13.5 - 17.9
	45-64	22.5	20.1 - 24.8
	65 & Older	67.3	64.8 - 69.9
EDUCATION LEVEL	<High School	30.6	25.2 - 36.0
	High School / GED	30.8	27.9 - 33.6
	>High School	34.0	32.2 - 35.8
ANNUAL INCOME	<\$25,000	33.3	30.1 - 36.5
	\$25,000-\$49,999	32.9	29.5 - 36.2
	\$50,000 or More	31.1	28.8 - 33.3
MARITAL STATUS	Married/Couple	33.2	31.1 - 35.2
	Not Married/Couple	32.3	30.0 - 34.5

Percentage of adults 65 years of age and older who have ever received a pneumonia vaccination

		Measure	95% CI
ALL	Overall	67.3	64.7 - 69.9
SEX	Men	67.3	63.2 - 71.4
	Women	67.3	64.0 - 70.6
RACE/ETHNICITY	Non-Hisp. White	72.4	70.1 - 74.8
	Non-Hisp. Black	44.4	34.3 - 54.5
	Hispanic	55.3	44.5 - 66.1
SEX BY RACE/ETHNICITY	Non-Hisp. White Men	73.4	70.0 - 76.8
	Non-Hisp. White Women	71.6	68.4 - 74.8
	Non-Hisp. Black Men	41.5	25.6 - 57.4
	Non-Hisp. Black Women	46.8	33.8 - 59.7
	Hispanic Men	53.0	36.3 - 69.7
	Hispanic Women	57.2	43.5 - 71.0
AGE GROUP	65 & Older	67.3	64.8 - 69.9
EDUCATION LEVEL	<High School	61.0	51.0 - 70.9
	High School / GED	60.5	55.5 - 65.4
	>High School	72.6	70.0 - 75.3
ANNUAL INCOME	<\$25,000	59.8	53.9 - 65.7
	\$25,000-\$49,999	66.8	61.5 - 72.0
	\$50,000 or More	75.0	71.4 - 78.6
MARITAL STATUS	Married/Couple	69.0	65.4 - 72.5
	Not Married/Couple	65.5	61.8 - 69.3

CI=Confidence Interval

NA=Not available due to respondent counts of less than 30.

Injury Prevention

Percentage of adults who always or nearly always use a seatbelt when riding in a car

		Measure	95% CI
ALL	Overall	94.3	93.4 - 95.1
SEX	Men	92.5	91.1 - 94.0
	Women	95.9	95.0 - 96.8
RACE/ETHNICITY	Non-Hisp. White	95.5	94.7 - 96.3
	Non-Hisp. Black	90.7	87.6 - 93.8
	Hispanic	93.7	91.4 - 96.0
SEX BY RACE/ETHNICITY	Non-Hisp. White Men	94.1	92.8 - 95.4
	Non-Hisp. White Women	96.8	96.0 - 97.6
	Non-Hisp. Black Men	86.9	81.2 - 92.6
	Non-Hisp. Black Women	93.9	90.9 - 97.0
	Hispanic Men	91.2	87.2 - 95.2
	Hispanic Women	96.2	93.8 - 98.5
AGE GROUP	18-44	92.6	91.0 - 94.2
	45-64	94.7	93.2 - 96.1
	65 & Older	96.4	95.3 - 97.5
EDUCATION LEVEL	<High School	86.5	82.3 - 90.7
	High School / GED	93.0	91.4 - 94.7
	>High School	96.6	95.9 - 97.4
ANNUAL INCOME	<\$25,000	91.3	89.0 - 93.6
	\$25,000-\$49,999	94.9	93.4 - 96.3
	\$50,000 or More	95.6	94.4 - 96.8
MARITAL STATUS	Married/Couple	95.3	94.3 - 96.4
	Not Married/Couple	93.2	91.9 - 94.5

2018 Florida BRFSS Data

Alcohol Consumption

Percentage of adults who engage in heavy or binge drinking

		Measure	95% CI
ALL	Overall	18.2	16.9 - 19.5
SEX	Men	23.0	20.9 - 25.2
	Women	13.7	12.1 - 15.2
RACE/ETHNICITY	Non-Hisp. White	20.0	18.6 - 21.5
	Non-Hisp. Black	12.8	9.2 - 16.4
	Hispanic	17.7	14.2 - 21.2
SEX BY RACE/ETHNICITY	Non-Hisp. White Men	23.8	21.5 - 26.1
	Non-Hisp. White Women	16.4	14.6 - 18.2
	Non-Hisp. Black Men	17.5	11.4 - 23.5
	Non-Hisp. Black Women	8.8	4.5 - 13.1
	Hispanic Men	26.0	20.0 - 32.0
	Hispanic Women	10.1	6.5 - 13.6
AGE GROUP	18-44	24.8	22.4 - 27.3
	45-64	18.5	16.3 - 20.8
	65 & Older	7.7	6.6 - 8.9
EDUCATION LEVEL	<High School	17.4	12.7 - 22.0
	High School / GED	17.0	14.6 - 19.4
	>High School	19.0	17.4 - 20.6
ANNUAL INCOME	<\$25,000	17.4	14.6 - 20.1
	\$25,000-\$49,999	18.5	15.5 - 21.6
	\$50,000 or More	21.2	19.1 - 23.3
MARITAL STATUS	Married/Couple	17.2	15.4 - 18.9
	Not Married/Couple	19.2	17.3 - 21.2

Percentage of adults who have driven after having too much alcohol to drink in the past 30 days

		Measure	95% CI
ALL	Overall	3.7	2.8 - 4.7
SEX	Men	5.1	3.6 - 6.6
	Women	2.1	1.0 - 3.2
RACE/ETHNICITY	Non-Hisp. White	3.5	2.5 - 4.4
	Non-Hisp. Black	5.4	1.1 - 9.8
	Hispanic	4.1	1.5 - 6.6
SEX BY RACE/ETHNICITY	Non-Hisp. White Men	4.9	3.3 - 6.5
	Non-Hisp. White Women	2.0	1.0 - 2.9
	Non-Hisp. Black Men	4.7	0.2 - 9.2
	Non-Hisp. Black Women	6.1	0.0 - 13.4
	Hispanic Men	6.4	2.2 - 10.6
	Hispanic Women	0.7	0.0 - 1.7
AGE GROUP	18-44	5.3	3.4 - 7.1
	45-64	3.5	2.0 - 5.0
	65 & Older	1.3	0.7 - 1.9
EDUCATION LEVEL	<High School	7.9	2.0 - 13.8
	High School / GED	4.5	2.2 - 6.7
	>High School	2.9	2.1 - 3.6
ANNUAL INCOME	<\$25,000	4.7	1.9 - 7.6
	\$25,000-\$49,999	4.2	1.8 - 6.6
	\$50,000 or More	3.9	2.7 - 5.2
MARITAL STATUS	Married/Couple	2.6	1.7 - 3.4
	Not Married/Couple	5.1	3.2 - 6.9

CI=Confidence Interval

NA=Not available due to respondent counts of less than 30.

2018 Florida BRFSS Data

Marijuana Use

Percentage of adults who used marijuana or hashish during the past 30 days

		Measure	95% CI
ALL	Overall	10.0	8.8 - 11.2
SEX	Men	12.9	11.0 - 14.9
	Women	7.3	5.9 - 8.7
RACE/ETHNICITY	Non-Hisp. White	9.3	8.2 - 10.5
	Non-Hisp. Black	12.1	8.2 - 16.1
	Hispanic	9.4	6.3 - 12.5
SEX BY RACE/ETHNICITY	Non-Hisp. White Men	12.3	10.4 - 14.3
	Non-Hisp. White Women	6.7	5.3 - 8.1
	Non-Hisp. Black Men	12.5	7.5 - 17.5
	Non-Hisp. Black Women	11.8	6.0 - 17.7
	Hispanic Men	14.8	9.2 - 20.5
	Hispanic Women	4.0	1.7 - 6.2
AGE GROUP	18-44	16.8	14.2 - 19.4
	45-64	7.9	6.3 - 9.6
	65 & Older	3.2	2.2 - 4.1
EDUCATION LEVEL	<High School	12.6	8.4 - 16.8
	High School / GED	9.9	7.7 - 12.1
	>High School	9.4	8.0 - 10.9
ANNUAL INCOME	<\$25,000	11.0	8.5 - 13.4
	\$25,000-\$49,999	11.7	9.0 - 14.5
	\$50,000 or More	9.1	7.3 - 11.0
MARITAL STATUS	Married/Couple	7.3	5.9 - 8.7
	Not Married/Couple	13.0	11.1 - 15.0

CI=Confidence Interval

NA=Not available due to respondent counts of less than 30.

2018 Florida BRFSS Data

Physical Activity & Nutrition

Percentage of adults who are sedentary

		Measure	95% CI
ALL	Overall	26.8	25.4 - 28.3
SEX	Men	24.1	22.0 - 26.2
	Women	29.4	27.4 - 31.4
RACE/ETHNICITY	Non-Hisp. White	23.7	22.3 - 25.2
	Non-Hisp. Black	28.1	23.9 - 32.4
	Hispanic	33.7	29.6 - 37.8
SEX BY RACE/ETHNICITY	Non-Hisp. White Men	21.9	19.7 - 24.0
	Non-Hisp. White Women	25.5	23.6 - 27.5
	Non-Hisp. Black Men	25.0	18.8 - 31.1
	Non-Hisp. Black Women	30.9	25.1 - 36.8
	Hispanic Men	29.9	24.0 - 35.7
	Hispanic Women	37.5	31.7 - 43.2
AGE GROUP	18-44	22.2	19.8 - 24.6
	45-64	29.0	26.3 - 31.6
	65 & Older	31.1	28.6 - 33.6
EDUCATION LEVEL	<High School	44.2	38.7 - 49.7
	High School / GED	32.2	29.2 - 35.1
	>High School	20.1	18.6 - 21.7
ANNUAL INCOME	<\$25,000	38.1	34.9 - 41.3
	\$25,000-\$49,999	28.4	25.2 - 31.5
	\$50,000 or More	17.3	15.1 - 19.4
MARITAL STATUS	Married/Couple	24.2	22.2 - 26.2
	Not Married/Couple	29.8	27.7 - 32.0

CI=Confidence Interval

NA=Not available due to respondent counts of less than 30.

2018 Florida BRFSS Data

Tobacco Use & Exposure

Percentage of adults who are current smokers

		Measure	95% CI
ALL	Overall	14.5	13.3 - 15.6
SEX	Men	16.2	14.4 - 18.1
	Women	12.8	11.5 - 14.1
RACE/ETHNICITY	Non-Hisp. White	15.9	14.6 - 17.2
	Non-Hisp. Black	11.5	8.3 - 14.6
	Hispanic	12.6	9.7 - 15.6
SEX BY RACE/ETHNICITY	Non-Hisp. White Men	15.6	13.7 - 17.6
	Non-Hisp. White Women	16.2	14.5 - 17.9
	Non-Hisp. Black Men	15.6	9.9 - 21.3
	Non-Hisp. Black Women	8.0	4.9 - 11.1
	Hispanic Men	17.8	12.6 - 23.0
	Hispanic Women	7.9	5.2 - 10.6
AGE GROUP	18-44	15.3	13.4 - 17.3
	45-64	18.7	16.6 - 20.9
	65 & Older	8.2	6.8 - 9.5
EDUCATION LEVEL	<High School	21.2	17.2 - 25.3
	High School / GED	17.0	14.7 - 19.2
	>High School	11.8	10.5 - 13.1
ANNUAL INCOME	<\$25,000	20.7	18.1 - 23.3
	\$25,000-\$49,999	16.0	13.2 - 18.7
	\$50,000 or More	9.9	8.4 - 11.3
MARITAL STATUS	Married/Couple	11.4	10.0 - 12.8
	Not Married/Couple	17.9	16.1 - 19.7

Percentage of adults who are former smokers

		Measure	95% CI
ALL	Overall	27.4	26.0 - 28.8
SEX	Men	30.4	28.3 - 32.5
	Women	24.6	22.7 - 26.5
RACE/ETHNICITY	Non-Hisp. White	33.3	31.7 - 34.9
	Non-Hisp. Black	14.0	10.8 - 17.2
	Hispanic	23.2	19.2 - 27.1
SEX BY RACE/ETHNICITY	Non-Hisp. White Men	36.5	34.1 - 38.9
	Non-Hisp. White Women	30.2	28.2 - 32.3
	Non-Hisp. Black Men	18.8	13.5 - 24.1
	Non-Hisp. Black Women	10.0	6.1 - 14.0
	Hispanic Men	24.7	19.1 - 30.2
	Hispanic Women	21.8	16.1 - 27.5
AGE GROUP	18-44	16.2	14.1 - 18.3
	45-64	28.7	26.1 - 31.3
	65 & Older	43.4	40.8 - 46.1
EDUCATION LEVEL	<High School	21.7	17.3 - 26.2
	High School / GED	30.0	27.0 - 33.0
	>High School	27.3	25.6 - 29.0
ANNUAL INCOME	<\$25,000	27.1	24.1 - 30.0
	\$25,000-\$49,999	28.0	24.8 - 31.1
	\$50,000 or More	29.3	27.1 - 31.4
MARITAL STATUS	Married/Couple	30.4	28.4 - 32.5
	Not Married/Couple	23.9	22.0 - 25.8

CI=Confidence Interval

NA=Not available due to respondent counts of less than 30.

2018 Florida BRFSS Data

Tobacco Use & Exposure

Percentage of adults who have never smoked

		Measure	95% CI
ALL	Overall	58.1	56.5 - 59.7
SEX	Men	53.3	50.9 - 55.7
	Women	62.6	60.5 - 64.7
RACE/ETHNICITY	Non-Hisp. White	50.8	49.1 - 52.5
	Non-Hisp. Black	74.5	70.3 - 78.7
	Hispanic	64.2	59.8 - 68.6
SEX BY RACE/ETHNICITY	Non-Hisp. White Men	47.9	45.3 - 50.4
	Non-Hisp. White Women	53.6	51.3 - 55.9
	Non-Hisp. Black Men	65.6	58.5 - 72.7
	Non-Hisp. Black Women	81.9	77.1 - 86.8
	Hispanic Men	57.6	51.2 - 63.9
	Hispanic Women	70.3	64.4 - 76.2
AGE GROUP	18-44	68.4	65.8 - 71.0
	45-64	52.6	49.7 - 55.5
	65 & Older	48.4	45.7 - 51.0
EDUCATION LEVEL	<High School	57.0	51.6 - 62.5
	High School / GED	53.0	49.8 - 56.2
	>High School	60.9	59.0 - 62.8
ANNUAL INCOME	<\$25,000	52.2	48.8 - 55.6
	\$25,000-\$49,999	56.0	52.5 - 59.6
	\$50,000 or More	60.9	58.5 - 63.3
MARITAL STATUS	Married/Couple	58.2	56.0 - 60.4
	Not Married/Couple	58.2	55.8 - 60.5

Percentage of adult current smokers who tried to quit smoking at least once in the past year

		Measure	95% CI
ALL	Overall	57.0	52.8 - 61.1
SEX	Men	55.1	48.7 - 61.4
	Women	59.1	54.1 - 64.2
RACE/ETHNICITY	Non-Hisp. White	54.0	49.6 - 58.4
	Non-Hisp. Black	75.4	64.6 - 86.2
	Hispanic	54.2	41.8 - 66.6
SEX BY RACE/ETHNICITY	Non-Hisp. White Men	53.4	46.8 - 60.1
	Non-Hisp. White Women	54.5	48.8 - 60.2
	Non-Hisp. Black Men	75.6	60.9 - 90.3
	Non-Hisp. Black Women	75.0	59.2 - 90.8
	Hispanic Men	47.5	31.5 - 63.4
	Hispanic Women	68.2	52.7 - 83.8
AGE GROUP	18-44	63.8	57.1 - 70.4
	45-64	53.7	47.3 - 60.1
	65 & Older	46.4	38.5 - 54.2
EDUCATION LEVEL	<High School	61.1	51.0 - 71.2
	High School / GED	53.5	46.3 - 60.7
	>High School	57.8	51.8 - 63.7
ANNUAL INCOME	<\$25,000	63.3	56.7 - 69.8
	\$25,000-\$49,999	51.8	42.2 - 61.5
	\$50,000 or More	48.0	40.2 - 55.9
MARITAL STATUS	Married/Couple	52.4	46.0 - 58.9
	Not Married/Couple	59.8	54.3 - 65.4

CI=Confidence Interval

NA=Not available due to respondent counts of less than 30.

2018 Florida BRFSS Data

Tobacco Use & Exposure

Percentage of adults who are current e-cigarette users

		Measure	95% CI
ALL	Overall	5.9	5.0 - 6.8
SEX	Men	7.1	5.6 - 8.6
	Women	4.8	3.7 - 5.9
RACE/ETHNICITY	Non-Hisp. White	5.7	4.8 - 6.6
	Non-Hisp. Black	4.7	1.9 - 7.4
	Hispanic	7.2	4.5 - 10.0
SEX BY RACE/ETHNICITY	Non-Hisp. White Men	6.6	5.2 - 8.0
	Non-Hisp. White Women	4.9	3.8 - 6.0
	Non-Hisp. Black Men	5.1	1.3 - 8.9
	Non-Hisp. Black Women	4.3	0.3 - 8.3
	Hispanic Men	9.9	5.3 - 14.4
	Hispanic Women	4.6	1.6 - 7.7
AGE GROUP	18-44	11.4	9.2 - 13.7
	45-64	3.5	2.7 - 4.3
	65 & Older	1.2	0.7 - 1.7
EDUCATION LEVEL	<High School	4.8	2.7 - 6.9
	High School / GED	7.4	5.4 - 9.4
	>High School	5.4	4.3 - 6.5
ANNUAL INCOME	<\$25,000	6.3	4.5 - 8.2
	\$25,000-\$49,999	7.5	5.2 - 9.8
	\$50,000 or More	4.9	3.6 - 6.2
MARITAL STATUS	Married/Couple	4.1	3.0 - 5.1
	Not Married/Couple	8.0	6.4 - 9.6

Percentage of adults who are former e-cigarette users

		Measure	95% CI
ALL	Overall	17.3	15.9 - 18.7
SEX	Men	18.9	16.7 - 21.1
	Women	15.9	14.1 - 17.7
RACE/ETHNICITY	Non-Hisp. White	19.0	17.5 - 20.5
	Non-Hisp. Black	13.0	9.6 - 16.5
	Hispanic	15.7	11.8 - 19.6
SEX BY RACE/ETHNICITY	Non-Hisp. White Men	19.4	17.0 - 21.7
	Non-Hisp. White Women	18.7	16.7 - 20.8
	Non-Hisp. Black Men	15.1	9.6 - 20.5
	Non-Hisp. Black Women	11.4	7.0 - 15.8
	Hispanic Men	19.9	13.9 - 26.0
	Hispanic Women	11.5	6.7 - 16.3
AGE GROUP	18-44	25.5	22.6 - 28.3
	45-64	17.4	15.0 - 19.7
	65 & Older	6.4	5.2 - 7.5
EDUCATION LEVEL	<High School	14.0	10.3 - 17.7
	High School / GED	17.6	15.2 - 20.0
	>High School	18.2	16.2 - 20.1
ANNUAL INCOME	<\$25,000	19.2	16.3 - 22.1
	\$25,000-\$49,999	17.2	14.2 - 20.3
	\$50,000 or More	17.2	14.9 - 19.5
MARITAL STATUS	Married/Couple	14.3	12.6 - 15.9
	Not Married/Couple	20.7	18.4 - 22.9

CI=Confidence Interval

NA=Not available due to respondent counts of less than 30.

2018 Florida BRFSS Data

Tobacco Use & Exposure

Percentage of adults who have never used e-cigarettes

		Measure	95% CI
ALL	Overall	76.7	75.2 - 78.3
SEX	Men	74.0	71.5 - 76.4
	Women	79.2	77.2 - 81.2
RACE/ETHNICITY	Non-Hisp. White	75.3	73.6 - 76.9
	Non-Hisp. Black	82.3	78.1 - 86.5
	Hispanic	77.1	72.6 - 81.6
SEX BY RACE/ETHNICITY	Non-Hisp. White Men	74.0	71.5 - 76.6
	Non-Hisp. White Women	76.3	74.1 - 78.5
	Non-Hisp. Black Men	79.7	73.4 - 86.1
	Non-Hisp. Black Women	84.3	78.7 - 90.0
	Hispanic Men	70.2	63.3 - 77.1
	Hispanic Women	83.9	78.4 - 89.4
AGE GROUP	18-44	63.1	59.9 - 66.3
	45-64	79.1	76.7 - 81.5
	65 & Older	92.4	91.1 - 93.7
EDUCATION LEVEL	<High School	81.2	77.0 - 85.3
	High School / GED	74.9	72.0 - 77.9
	>High School	76.4	74.4 - 78.5
ANNUAL INCOME	<\$25,000	74.4	71.2 - 77.7
	\$25,000-\$49,999	75.2	71.7 - 78.8
	\$50,000 or More	77.9	75.4 - 80.4
MARITAL STATUS	Married/Couple	81.6	79.7 - 83.5
	Not Married/Couple	71.3	68.8 - 73.9

Percentage of adults who currently use chewing tobacco, snuff, or snus some days or every day

		Measure	95% CI
ALL	Overall	2.9	2.3 - 3.4
SEX	Men	4.6	3.6 - 5.5
	Women	1.3	0.7 - 1.9
RACE/ETHNICITY	Non-Hisp. White	3.2	2.6 - 3.9
	Non-Hisp. Black	3.7	1.3 - 6.0
	Hispanic	1.4	0.5 - 2.3
SEX BY RACE/ETHNICITY	Non-Hisp. White Men	5.6	4.4 - 6.8
	Non-Hisp. White Women	1.0	0.5 - 1.5
	Non-Hisp. Black Men	5.0	1.4 - 8.5
	Non-Hisp. Black Women	2.6	0.0 - 5.7
	Hispanic Men	2.0	0.4 - 3.6
	Hispanic Women	0.8	0.0 - 1.8
AGE GROUP	18-44	4.0	2.8 - 5.1
	45-64	2.6	2.0 - 3.3
	65 & Older	1.5	0.9 - 2.1
EDUCATION LEVEL	<High School	2.8	1.6 - 4.0
	High School / GED	3.6	2.3 - 4.8
	>High School	2.6	1.9 - 3.2
ANNUAL INCOME	<\$25,000	2.9	1.8 - 3.9
	\$25,000-\$49,999	2.5	1.3 - 3.7
	\$50,000 or More	3.5	2.5 - 4.5
MARITAL STATUS	Married/Couple	2.6	1.9 - 3.4
	Not Married/Couple	3.1	2.2 - 4.0

CI=Confidence Interval

NA=Not available due to respondent counts of less than 30.

2018 Florida BRFSS Data

Health Status & Quality of Life

Percentage of adults who said their overall health was "good" to "excellent"

		Measure	95% CI
ALL	Overall	79.2	77.8 - 80.5
SEX	Men	79.3	77.3 - 81.3
	Women	79.1	77.2 - 80.9
RACE/ETHNICITY	Non-Hisp. White	81.8	80.5 - 83.1
	Non-Hisp. Black	80.5	76.9 - 84.0
	Hispanic	72.0	68.1 - 76.0
SEX BY RACE/ETHNICITY	Non-Hisp. White Men	81.8	79.8 - 83.8
	Non-Hisp. White Women	81.8	80.1 - 83.5
	Non-Hisp. Black Men	78.9	73.1 - 84.7
	Non-Hisp. Black Women	81.9	77.6 - 86.2
	Hispanic Men	73.2	67.5 - 78.9
	Hispanic Women	70.8	65.3 - 76.4
AGE GROUP	18-44	85.4	83.4 - 87.4
	45-64	74.4	71.8 - 77.0
	65 & Older	75.0	72.6 - 77.5
EDUCATION LEVEL	<High School	58.4	52.9 - 63.8
	High School / GED	76.3	73.6 - 79.0
	>High School	85.4	84.1 - 86.8
ANNUAL INCOME	<\$25,000	65.1	61.8 - 68.3
	\$25,000-\$49,999	79.2	76.3 - 82.1
	\$50,000 or More	89.9	88.2 - 91.5
MARITAL STATUS	Married/Couple	81.8	80.0 - 83.6
	Not Married/Couple	76.2	74.1 - 78.2

Percentage of adults said their overall health was "fair" or "poor"

		Measure	95% CI
ALL	Overall	20.8	19.5 - 22.2
SEX	Men	20.7	18.7 - 22.7
	Women	20.9	19.1 - 22.8
RACE/ETHNICITY	Non-Hisp. White	18.2	16.9 - 19.5
	Non-Hisp. Black	19.5	16.0 - 23.1
	Hispanic	28.0	24.0 - 31.9
SEX BY RACE/ETHNICITY	Non-Hisp. White Men	18.2	16.2 - 20.2
	Non-Hisp. White Women	18.2	16.5 - 19.9
	Non-Hisp. Black Men	21.1	15.3 - 26.9
	Non-Hisp. Black Women	18.1	13.8 - 22.4
	Hispanic Men	26.8	21.1 - 32.5
	Hispanic Women	29.2	23.6 - 34.7
AGE GROUP	18-44	14.6	12.6 - 16.6
	45-64	25.6	23.0 - 28.2
	65 & Older	25.0	22.5 - 27.4
EDUCATION LEVEL	<High School	41.6	36.2 - 47.1
	High School / GED	23.7	21.0 - 26.4
	>High School	14.6	13.2 - 15.9
ANNUAL INCOME	<\$25,000	34.9	31.7 - 38.2
	\$25,000-\$49,999	20.8	17.9 - 23.7
	\$50,000 or More	10.1	8.5 - 11.8
MARITAL STATUS	Married/Couple	18.2	16.4 - 20.0
	Not Married/Couple	23.8	21.8 - 25.9

CI=Confidence Interval
 NA=Not available due to respondent counts of less than 30.

2018 Florida BRFSS Data

Health Status & Quality of Life

Percentage of adults with good physical health for the past 30 days

		Measure	95% CI
ALL	Overall	86.2	85.1 - 87.3
SEX	Men	86.6	85.0 - 88.3
	Women	85.8	84.4 - 87.3
RACE/ETHNICITY	Non-Hisp. White	86.1	84.9 - 87.2
	Non-Hisp. Black	86.9	83.7 - 90.1
	Hispanic	85.9	82.9 - 89.0
SEX BY RACE/ETHNICITY	Non-Hisp. White Men	86.5	84.7 - 88.3
	Non-Hisp. White Women	85.7	84.2 - 87.1
	Non-Hisp. Black Men	87.1	82.3 - 91.9
	Non-Hisp. Black Women	86.8	82.5 - 91.0
	Hispanic Men	86.7	82.3 - 91.2
	Hispanic Women	85.2	81.0 - 89.4
AGE GROUP	18-44	91.5	90.1 - 93.0
	45-64	82.1	79.9 - 84.3
	65 & Older	82.4	80.2 - 84.6
EDUCATION LEVEL	<High School	73.3	68.1 - 78.4
	High School / GED	85.9	83.9 - 87.8
	>High School	89.3	88.2 - 90.4
ANNUAL INCOME	<\$25,000	76.4	73.5 - 79.2
	\$25,000-\$49,999	86.3	83.9 - 88.7
	\$50,000 or More	92.6	91.4 - 93.8
MARITAL STATUS	Married/Couple	88.3	87.0 - 89.7
	Not Married/Couple	83.7	81.9 - 85.5

Percentage of adults who had poor physical health on 14 or more of the past 30 days

		Measure	95% CI
ALL	Overall	13.8	12.7 - 14.9
SEX	Men	13.4	11.7 - 15.0
	Women	14.2	12.7 - 15.6
RACE/ETHNICITY	Non-Hisp. White	13.9	12.8 - 15.1
	Non-Hisp. Black	13.1	9.9 - 16.3
	Hispanic	14.1	11.0 - 17.1
SEX BY RACE/ETHNICITY	Non-Hisp. White Men	13.5	11.7 - 15.3
	Non-Hisp. White Women	14.3	12.9 - 15.8
	Non-Hisp. Black Men	12.9	8.1 - 17.7
	Non-Hisp. Black Women	13.2	9.0 - 17.5
	Hispanic Men	13.3	8.8 - 17.7
	Hispanic Women	14.8	10.6 - 19.0
AGE GROUP	18-44	8.5	7.0 - 9.9
	45-64	17.9	15.7 - 20.1
	65 & Older	17.6	15.4 - 19.8
EDUCATION LEVEL	<High School	26.7	21.6 - 31.9
	High School / GED	14.1	12.2 - 16.1
	>High School	10.7	9.6 - 11.8
ANNUAL INCOME	<\$25,000	23.6	20.8 - 26.5
	\$25,000-\$49,999	13.7	11.3 - 16.1
	\$50,000 or More	7.4	6.2 - 8.6
MARITAL STATUS	Married/Couple	11.7	10.3 - 13.0
	Not Married/Couple	16.3	14.5 - 18.1

CI=Confidence Interval
 NA=Not available due to respondent counts of less than 30.

2018 Florida BRFSS Data

Health Status & Quality of Life

Percentage of adults with good mental health for the past 30 days

		Measure	95% CI
ALL	Overall	87.2	86.1 - 88.2
SEX	Men	88.7	87.2 - 90.2
	Women	85.8	84.3 - 87.3
RACE/ETHNICITY	Non-Hisp. White	86.4	85.3 - 87.6
	Non-Hisp. Black	88.4	85.3 - 91.5
	Hispanic	88.7	86.1 - 91.4
SEX BY RACE/ETHNICITY	Non-Hisp. White Men	87.8	86.1 - 89.5
	Non-Hisp. White Women	85.1	83.5 - 86.7
	Non-Hisp. Black Men	91.1	87.2 - 95.1
	Non-Hisp. Black Women	85.9	81.3 - 90.5
	Hispanic Men	89.9	86.2 - 93.6
	Hispanic Women	87.6	83.8 - 91.4
AGE GROUP	18-44	84.9	83.0 - 86.8
	45-64	85.0	83.0 - 87.0
	65 & Older	93.2	92.0 - 94.4
EDUCATION LEVEL	<High School	80.7	76.4 - 85.0
	High School / GED	86.3	84.3 - 88.3
	>High School	89.0	87.9 - 90.2
ANNUAL INCOME	<\$25,000	79.6	77.0 - 82.2
	\$25,000-\$49,999	85.8	83.4 - 88.2
	\$50,000 or More	92.3	91.0 - 93.6
MARITAL STATUS	Married/Couple	90.9	89.7 - 92.0
	Not Married/Couple	82.9	81.1 - 84.8

Percentage of adults who had poor mental health on 14 or more of the past 30 days

		Measure	95% CI
ALL	Overall	12.8	11.8 - 13.9
SEX	Men	11.3	9.8 - 12.8
	Women	14.2	12.7 - 15.7
RACE/ETHNICITY	Non-Hisp. White	13.6	12.4 - 14.7
	Non-Hisp. Black	11.6	8.5 - 14.7
	Hispanic	11.3	8.6 - 13.9
SEX BY RACE/ETHNICITY	Non-Hisp. White Men	12.2	10.5 - 13.9
	Non-Hisp. White Women	14.9	13.3 - 16.5
	Non-Hisp. Black Men	8.9	4.9 - 12.8
	Non-Hisp. Black Women	14.1	9.5 - 18.7
	Hispanic Men	10.1	6.4 - 13.8
	Hispanic Women	12.4	8.6 - 16.2
AGE GROUP	18-44	15.1	13.2 - 17.0
	45-64	15.0	13.0 - 17.0
	65 & Older	6.8	5.6 - 8.0
EDUCATION LEVEL	<High School	19.3	15.0 - 23.6
	High School / GED	13.7	11.7 - 15.7
	>High School	11.0	9.8 - 12.1
ANNUAL INCOME	<\$25,000	20.4	17.8 - 23.0
	\$25,000-\$49,999	14.2	11.8 - 16.6
	\$50,000 or More	7.7	6.4 - 9.0
MARITAL STATUS	Married/Couple	9.1	8.0 - 10.3
	Not Married/Couple	17.1	15.2 - 18.9

CI=Confidence Interval
 NA=Not available due to respondent counts of less than 30.

2018 Florida BRFSS Data

Health Status & Quality of Life

Percentage of adults whose poor physical or mental health kept them from doing usual activities on 14 or more of the past 30 days

		Measure	95% CI
ALL	Overall	18.3	16.5 - 20.0
SEX	Men	19.2	16.3 - 22.1
	Women	17.5	15.4 - 19.6
RACE/ETHNICITY	Non-Hisp. White	18.9	17.1 - 20.7
	Non-Hisp. Black	15.9	10.9 - 21.0
	Hispanic	16.1	11.6 - 20.7
SEX BY RACE/ETHNICITY	Non-Hisp. White Men	18.2	15.4 - 21.0
	Non-Hisp. White Women	19.5	17.1 - 21.9
	Non-Hisp. Black Men	18.1	9.8 - 26.4
	Non-Hisp. Black Women	14.3	8.1 - 20.5
	Hispanic Men	18.2	10.4 - 25.9
	Hispanic Women	14.7	9.2 - 20.1
AGE GROUP	18-44	13.2	10.4 - 16.0
	45-64	23.0	19.9 - 26.2
	65 & Older	21.7	18.5 - 24.8
EDUCATION LEVEL	<High School	35.9	28.3 - 43.5
	High School / GED	19.7	16.4 - 22.9
	>High School	13.4	11.8 - 15.0
ANNUAL INCOME	<\$25,000	30.2	26.2 - 34.2
	\$25,000-\$49,999	16.3	13.2 - 19.4
	\$50,000 or More	8.6	6.8 - 10.5
MARITAL STATUS	Married/Couple	15.7	13.5 - 17.8
	Not Married/Couple	20.7	17.9 - 23.4

CI=Confidence Interval

NA=Not available due to respondent counts of less than 30.

2018 Florida BRFSS Data

Health Status & Quality of Life

Average number of days where poor mental or physical health interfered with activities of daily living in the past 30 days (among adults who have had at least one day of poor mental or physical health)

		Measure	95% CI
ALL	Overall	5.6	5.1 - 6.0
SEX	Men	5.8	5.1 - 6.5
	Women	5.4	4.9 - 5.9
RACE/ETHNICITY	Non-Hisp. White	5.8	5.4 - 6.2
	Non-Hisp. Black	5.3	4.0 - 6.7
	Hispanic	4.4	3.5 - 5.4
SEX BY RACE/ETHNICITY	Non-Hisp. White Men	5.7	5.0 - 6.4
	Non-Hisp. White Women	5.9	5.3 - 6.5
	Non-Hisp. Black Men	5.6	3.4 - 7.8
	Non-Hisp. Black Women	5.1	3.4 - 6.8
	Hispanic Men	5.0	3.2 - 6.7
	Hispanic Women	4.1	3.0 - 5.1
AGE GROUP	18-44	4.2	3.5 - 4.8
	45-64	6.9	6.1 - 7.7
	65 & Older	6.4	5.6 - 7.2
EDUCATION LEVEL	<High School	9.8	8.0 - 11.7
	High School / GED	5.8	5.1 - 6.5
	>High School	4.4	4.0 - 4.8
ANNUAL INCOME	<\$25,000	8.5	7.5 - 9.4
	\$25,000-\$49,999	5.0	4.2 - 5.8
	\$50,000 or More	3.5	3.0 - 4.0
MARITAL STATUS	Married/Couple	4.9	4.4 - 5.4
	Not Married/Couple	6.2	5.6 - 6.9

CI=Confidence Interval
 NA=Not available due to respondent counts of less than 30.

2018 Florida BRFSS Data

Health Status & Quality of Life

Average number of unhealthy physical days in the past 30 days

		Measure	95% CI
ALL	Overall	4.4	4.1 - 4.6
SEX	Men	4.3	3.8 - 4.7
	Women	4.4	4.1 - 4.8
RACE/ETHNICITY	Non-Hisp. White	4.5	4.2 - 4.8
	Non-Hisp. Black	4.3	3.4 - 5.1
	Hispanic	4.1	3.4 - 4.9
SEX BY RACE/ETHNICITY	Non-Hisp. White Men	4.4	4.0 - 4.9
	Non-Hisp. White Women	4.6	4.2 - 5.0
	Non-Hisp. Black Men	4.1	2.8 - 5.4
	Non-Hisp. Black Women	4.4	3.3 - 5.5
	Hispanic Men	4.0	2.9 - 5.2
	Hispanic Women	4.3	3.3 - 5.2
AGE GROUP	18-44	2.8	2.4 - 3.1
	45-64	5.5	4.9 - 6.1
	65 & Older	5.6	5.0 - 6.1
EDUCATION LEVEL	<High School	7.4	6.2 - 8.6
	High School / GED	4.7	4.1 - 5.2
	>High School	3.5	3.3 - 3.8
ANNUAL INCOME	<\$25,000	7.0	6.3 - 7.7
	\$25,000-\$49,999	4.1	3.5 - 4.7
	\$50,000 or More	2.7	2.4 - 3.0
MARITAL STATUS	Married/Couple	3.8	3.4 - 4.1
	Not Married/Couple	5.1	4.6 - 5.5

Average number of unhealthy mental days in the past 30 days

		Measure	95% CI
ALL	Overall	4.0	3.7 - 4.2
SEX	Men	3.5	3.1 - 3.9
	Women	4.4	4.0 - 4.8
RACE/ETHNICITY	Non-Hisp. White	4.2	3.9 - 4.5
	Non-Hisp. Black	3.7	2.9 - 4.4
	Hispanic	3.5	2.8 - 4.2
SEX BY RACE/ETHNICITY	Non-Hisp. White Men	3.7	3.3 - 4.2
	Non-Hisp. White Women	4.7	4.3 - 5.1
	Non-Hisp. Black Men	3.0	1.9 - 4.0
	Non-Hisp. Black Women	4.3	3.2 - 5.4
	Hispanic Men	3.1	2.1 - 4.1
	Hispanic Women	3.8	2.9 - 4.8
AGE GROUP	18-44	4.7	4.3 - 5.2
	45-64	4.5	4.0 - 5.0
	65 & Older	2.2	1.9 - 2.5
EDUCATION LEVEL	<High School	5.6	4.5 - 6.7
	High School / GED	4.1	3.6 - 4.6
	>High School	3.6	3.3 - 3.9
ANNUAL INCOME	<\$25,000	5.9	5.2 - 6.5
	\$25,000-\$49,999	4.3	3.7 - 4.9
	\$50,000 or More	2.7	2.4 - 3.1
MARITAL STATUS	Married/Couple	2.9	2.7 - 3.2
	Not Married/Couple	5.2	4.7 - 5.6

CI=Confidence Interval

NA=Not available due to respondent counts of less than 30.

2018 Florida BRFSS Data

Health Status & Quality of Life

Percentage of adults who sleep at least 7 hours each night

		Measure	95% CI
ALL	Overall	63.5	62.0 - 65.1
SEX	Men	63.8	61.5 - 66.1
	Women	63.3	61.2 - 65.5
RACE/ETHNICITY	Non-Hisp. White	65.7	64.1 - 67.3
	Non-Hisp. Black	54.1	49.2 - 59.0
	Hispanic	64.3	60.1 - 68.4
SEX BY RACE/ETHNICITY	Non-Hisp. White Men	64.4	62.0 - 66.9
	Non-Hisp. White Women	66.9	64.7 - 69.0
	Non-Hisp. Black Men	54.5	47.1 - 62.0
	Non-Hisp. Black Women	53.7	47.4 - 60.1
	Hispanic Men	67.1	61.4 - 72.9
	Hispanic Women	61.7	55.7 - 67.6
AGE GROUP	18-44	61.0	58.3 - 63.7
	45-64	59.3	56.5 - 62.1
	65 & Older	72.4	70.0 - 74.8
EDUCATION LEVEL	<High School	58.4	52.9 - 63.9
	High School / GED	62.5	59.5 - 65.6
	>High School	65.1	63.2 - 66.9
ANNUAL INCOME	<\$25,000	58.8	55.5 - 62.2
	\$25,000-\$49,999	62.7	59.2 - 66.2
	\$50,000 or More	66.2	63.8 - 68.6
MARITAL STATUS	Married/Couple	66.1	64.0 - 68.2
	Not Married/Couple	60.3	58.0 - 62.7

CI=Confidence Interval

NA=Not available due to respondent counts of less than 30.

2018 Florida BRFSS Data

Health Care Access & Coverage

Percentage of adults with any type of health care insurance coverage

		Measure	95% CI
ALL	Overall	84.2	82.9 - 85.5
SEX	Men	83.2	81.3 - 85.2
	Women	85.1	83.4 - 86.8
RACE/ETHNICITY	Non-Hisp. White	88.7	87.6 - 89.9
	Non-Hisp. Black	83.6	79.9 - 87.4
	Hispanic	74.7	70.9 - 78.5
SEX BY RACE/ETHNICITY	Non-Hisp. White Men	88.8	87.1 - 90.5
	Non-Hisp. White Women	88.7	87.1 - 90.3
	Non-Hisp. Black Men	81.4	75.4 - 87.4
	Non-Hisp. Black Women	85.6	81.0 - 90.2
	Hispanic Men	71.7	66.1 - 77.4
	Hispanic Women	77.5	72.5 - 82.5
AGE GROUP	18-44	74.5	72.0 - 77.1
	45-64	85.0	82.9 - 87.1
	65 & Older	98.2	97.5 - 98.9
EDUCATION LEVEL	<High School	68.2	63.1 - 73.3
	High School / GED	79.7	76.9 - 82.5
	>High School	90.0	88.8 - 91.3
ANNUAL INCOME	<\$25,000	72.7	69.5 - 75.9
	\$25,000-\$49,999	83.5	80.8 - 86.1
	\$50,000 or More	93.3	91.8 - 94.9
MARITAL STATUS	Married/Couple	87.5	85.8 - 89.2
	Not Married/Couple	80.4	78.4 - 82.4

Percentage of adults who have a personal doctor

		Measure	95% CI
ALL	Overall	73.8	72.3 - 75.3
SEX	Men	69.8	67.5 - 72.0
	Women	77.5	75.6 - 79.4
RACE/ETHNICITY	Non-Hisp. White	77.7	76.2 - 79.3
	Non-Hisp. Black	74.8	70.6 - 79.1
	Hispanic	65.0	60.9 - 69.1
SEX BY RACE/ETHNICITY	Non-Hisp. White Men	74.6	72.3 - 77.0
	Non-Hisp. White Women	80.6	78.7 - 82.6
	Non-Hisp. Black Men	72.3	65.7 - 78.9
	Non-Hisp. Black Women	77.0	71.5 - 82.5
	Hispanic Men	58.3	52.2 - 64.5
	Hispanic Women	71.3	66.0 - 76.6
AGE GROUP	18-44	56.6	53.9 - 59.4
	45-64	79.3	76.9 - 81.8
	65 & Older	93.5	92.1 - 95.0
EDUCATION LEVEL	<High School	65.2	60.0 - 70.5
	High School / GED	70.5	67.6 - 73.5
	>High School	77.4	75.6 - 79.1
ANNUAL INCOME	<\$25,000	67.0	63.8 - 70.3
	\$25,000-\$49,999	70.4	66.9 - 73.8
	\$50,000 or More	81.2	79.2 - 83.2
MARITAL STATUS	Married/Couple	77.7	75.8 - 79.7
	Not Married/Couple	69.3	67.0 - 71.5

CI=Confidence Interval
 NA=Not available due to respondent counts of less than 30.

2018 Florida BRFSS Data

Health Care Access & Coverage

Percentage of adults who could not see a doctor in the past year due to cost

		Measure	95% CI
ALL	Overall	16.2	14.9 - 17.4
SEX	Men	14.8	12.9 - 16.6
	Women	17.5	15.7 - 19.3
RACE/ETHNICITY	Non-Hisp. White	13.1	11.9 - 14.3
	Non-Hisp. Black	21.0	16.8 - 25.2
	Hispanic	20.5	17.0 - 24.0
SEX BY RACE/ETHNICITY	Non-Hisp. White Men	11.4	9.7 - 13.2
	Non-Hisp. White Women	14.7	13.1 - 16.4
	Non-Hisp. Black Men	19.9	13.8 - 25.9
	Non-Hisp. Black Women	22.0	16.2 - 27.8
	Hispanic Men	19.0	14.1 - 23.9
	Hispanic Women	21.9	16.9 - 26.9
AGE GROUP	18-44	21.6	19.3 - 23.9
	45-64	18.6	16.3 - 20.9
	65 & Older	5.1	3.7 - 6.6
EDUCATION LEVEL	<High School	26.0	21.1 - 30.9
	High School / GED	19.3	16.6 - 22.0
	>High School	12.4	11.2 - 13.7
ANNUAL INCOME	<\$25,000	27.3	24.3 - 30.4
	\$25,000-\$49,999	16.9	14.2 - 19.7
	\$50,000 or More	8.4	6.8 - 10.1
MARITAL STATUS	Married/Couple	13.7	12.1 - 15.4
	Not Married/Couple	19.0	17.1 - 21.0

Percentage of adults who had a medical checkup in the past year

		Measure	95% CI
ALL	Overall	80.4	79.1 - 81.7
SEX	Men	76.4	74.4 - 78.4
	Women	84.1	82.5 - 85.7
RACE/ETHNICITY	Non-Hisp. White	80.5	79.1 - 81.9
	Non-Hisp. Black	86.3	83.2 - 89.4
	Hispanic	76.9	73.3 - 80.4
SEX BY RACE/ETHNICITY	Non-Hisp. White Men	77.8	75.5 - 80.0
	Non-Hisp. White Women	83.1	81.3 - 84.9
	Non-Hisp. Black Men	83.0	78.1 - 88.0
	Non-Hisp. Black Women	89.2	85.4 - 92.9
	Hispanic Men	69.3	63.7 - 74.9
	Hispanic Women	84.0	79.8 - 88.2
AGE GROUP	18-44	69.2	66.7 - 71.7
	45-64	81.6	79.4 - 83.9
	65 & Older	95.9	95.1 - 96.7
EDUCATION LEVEL	<High School	79.2	75.1 - 83.3
	High School / GED	78.5	75.8 - 81.1
	>High School	81.6	80.0 - 83.1
ANNUAL INCOME	<\$25,000	77.6	74.8 - 80.4
	\$25,000-\$49,999	79.5	76.6 - 82.4
	\$50,000 or More	81.0	78.9 - 83.0
MARITAL STATUS	Married/Couple	81.1	79.3 - 82.8
	Not Married/Couple	79.4	77.5 - 81.4

CI=Confidence Interval

NA=Not available due to respondent counts of less than 30.

GLOSSARY

2018 Florida Behavioral Risk Factor Surveillance System Data

Activities of Daily Living	Usual activities, such as self-care, work, or recreation.
Adult	Individual aged 18 years or older.
Angina	Most common symptom of coronary artery disease (CAD); chest pain or discomfort that occurs if an area of the heart muscle does not get enough oxygen-rich blood.
Arthritis	Joint inflammation; term used in the public health field to describe more than 100 rheumatic diseases and conditions that affect joints, the tissues which surround the joint, and other connective tissue; pattern, severity, and location of symptoms can vary.
Asthma	Disease that affects the lungs; causes repeated episodes of wheezing, breathlessness, chest tightness, and nighttime or early morning coughing.
Binge Drinking*	For women, consumption of 4 or more drinks during a single occasion in the past 30 days; for men, consumption of 5 or more drinks during a single occasion in the past 30 days.
Blood Glucose	Also called blood sugar; refers to the level of glucose, the main sugar the body makes from the food we eat, that is found in the bloodstream.
Blood Pressure	The force of the blood against the artery walls; two levels of blood pressure measured, the highest, or systolic, occurs when the heart pumps blood into the blood vessels, and the lowest, or diastolic, occurs when the heart rests.
Blood Sugar	See Blood Glucose
Body Mass Index (BMI)	A number calculated from a person's height and weight; provides a reliable indicator of body fatness for most people; used to screen for weight categories that may lead to health problems.
Cancer	General name for a group of diseases; when cells in a part of the body begin to grow out of control, forming new, abnormal cells and sometimes invading (growing into) other tissues.
Cholesterol	A substance the body uses to produce hormones, vitamin D, and food-digesting acids. Too much cholesterol in the blood over an extended period can increase the risk of coronary heart disease, heart attack, or angina.
Chronic Bronchitis	A long-term condition in which the airways that carry air to the lungs become inflamed and produce too much mucus, making it difficult to get air into and out of the lungs.
Chronic Diseases	Diseases of long duration and generally slow progression (e.g., heart disease, stroke, cancer, diabetes); represent the leading causes of mortality worldwide.
Chronic Obstructive Pulmonary Disease (COPD)	Term that refers to a group of diseases that cause airflow blockage and breathing-related problems, including emphysema and chronic bronchitis.
Coronary Artery Disease (CAD)	Most common type of heart disease; occurs when a substance called plaque builds up on the inner walls of the arteries that supply blood to the heart, called coronary arteries; most common cause of a heart attack.
Coronary Heart Disease (CHD)	See Coronary Artery Disease (CAD)
Current Smoker*	Combination of everyday smoker and some days smoker.
Depressive Disorders	Mental illnesses characterized by a profound and persistent feeling of sadness or despair and/or a loss of interest in things that once were pleasurable; disturbance in sleep, appetite, and mental processes are a common accompaniment.
Diabetes	General term for diabetes mellitus; disease in which blood glucose levels are above normal.

*This term is defined using BRFSS standards.

GLOSSARY

2018 Florida Behavioral Risk Factor Surveillance System Data

E-Cigarettes	An e-cigarette, also known as an electronic cigarette, is a device that allows a user to inhale nicotine and other vapors.
Emphysema	Long-term, progressive disease of the lungs that primarily causes shortness of breath; tissues necessary to support the physical shape and function of the lungs are destroyed. See also Chronic Obstructive Pulmonary Disease (COPD).
Everyday Smoker*	Adults who reported smoking at least 100 cigarettes in their lifetimes and reported smoking everyday now.
Exercise	See Physical Activity
Fibromyalgia	A musculoskeletal condition causing widespread muscle and joint pain and fatigue.
Flu	Contagious respiratory illness caused by influenza viruses; can cause mild to severe illness, and at times can lead to death.
Flu Shot	Influenza vaccine; an inactivated vaccine (containing killed virus) that is given with a needle, usually in the arm. The flu vaccine can also be administered as an attenuated vaccine (containing weakened, live virus) by a spray, mist, or drop in the nose.
Former Smoker	Adults who reported smoking at least 100 cigarettes in their lifetimes but reported not smoking now.
Gout	A form of arthritis caused by too much uric acid in the blood that causes pain, stiffness, and swelling of a joint.
Health Behavior	An action taken by a person to maintain, attain, or regain good health and to prevent illness.
Health Care Coverage	Health insurance, pre-paid plans such as HMO's, government plans such as Medicare.
Health Care Provider	A person who by education, training, certification, or licensure is qualified to and is engaged in providing health care to patients (e.g., medical doctor, nurse practitioner, physician assistant, registered nurse).
Health Risk Behavior	An action taken by a person that is associated with higher than average rates of morbidity or mortality (e.g., lack of physical activity, poor nutrition, tobacco use, excessive alcohol consumption).
Healthy Weight	Having a body mass index (BMI) ranging from 18.5 to 24.9; BMI is calculated using self-reported height and weight.
Heart Attack	Most commonly caused by coronary artery disease (CAD); occurs when a section of the heart muscle dies or gets damaged because of reduced blood supply.
Heavy Drinking*	For women, consumption of more than 1 drink per day on average in the past 30 days; for men, consumption of more than 2 drinks per day on average in the past 30 days.
High Blood Cholesterol	Condition where there is too much cholesterol in the blood for an extended period of time; increases the risk of coronary heart disease, heart attack, or angina.
High Blood Pressure	Condition where the blood circulates through the arteries with too much force; tires the heart, harms the arteries, and increases the risk of heart attack, stroke, and kidney problems.
Hispanic	Adults of Cuban, Mexican, Puerto Rican, South or Central American, or other Spanish culture or origin, regardless of race; self-reported demographic variable.
HIV	Human immunodeficiency virus (HIV) damages a person's body by destroying immune system cells, which are crucial to helping the body fight diseases; can lead to acquired immune deficiency syndrome (AIDS).

*This term is defined using BRFSS standards.

GLOSSARY

2018 Florida Behavioral Risk Factor Surveillance System Data

Hypertension	See High Blood Pressure
Influenza	See Flu
Kidney Disease	Also called renal disease; general term for any damage that reduces the functioning of the kidney.
Lupus	A chronic inflammatory disease resulting from an attack by the body's own immune system.
Mental Health	A state of well-being in which the individual realizes his or her own abilities, can cope with the normal stresses of life, can work productively and fruitfully, and is able to make a contribution to his or her community.
Never Smoked*	Adults who reported smoking less than 100 cigarettes in their lifetime.
Non-Hispanic Black	Adults not of Hispanic culture or origins reporting membership in only the black race category; self-reported demographic variable.
Non-Hispanic White	Adults not of Hispanic culture or origins reporting membership in only the white race category; self-reported demographic variable.
Non-Smoker*	Combination of former smoker and never smoked.
Obese	Having a body mass index (BMI) that is greater than or equal to 30.0; BMI is calculated using self-reported height and weight.
Obesity	A condition characterized by being obese.
Overweight	Having a body mass index (BMI) ranging from 25.0 to 29.9; BMI is calculated using self-reported height and weight.
Personal Doctor	A health care provider that an adult identifies as their personal health care provider.
Physical Activity	Any bodily movement produced by the contraction of skeletal muscle that increases energy expenditure above basal level and that enhances or maintains physical fitness and overall health and wellness.
Pneumococcal Vaccination	Vaccine given with a needle, usually in the arm, to prevent pneumococcal pneumonia.
Pneumonia	Infection of the lungs, usually caused by bacteria or viruses, that can cause mild to severe illness.
Poor Mental Health	Adults who report that their mental health, which includes stress, depression, and problems with emotions, was not good on 14 or more of the previous 30 days.
Poor Physical Health	Adults who report that their physical health, which includes physical illness and injury, was not good on 14 or more of the previous 30 days.
Pre-Diabetes	A condition in which an individual's blood sugar is high, but not high enough to be diagnosed as diabetes.
Prostate-Specific Antigen Test (PSA)	Test used primarily to screen for prostate cancer that measures the amount of prostate-specific antigen (PSA) present in blood.
Race/Ethnicity	A measure that combines an adult's ethnicity status (Hispanic/non-Hispanic) and race status (e.g., white; black; other); self-reported demographic variable.
Routine Checkup	A general physical exam; does not include exams conducted for a specific injury, illness, or condition.
Sedentary*	Participating in no leisure-time physical activity in the past 30 days.
Sex	The condition or character of being male or female; self-reported demographic variable.
Smoking	Inhalation of the smoke (gases and hydrocarbon vapors) generated by slowly burning tobacco.

*This term is defined using BRFSS standards.

GLOSSARY

2018 Florida Behavioral Risk Factor Surveillance System Data

Some Days Smoking*

Adults who reported smoking at least 100 cigarettes in their lifetime and reported smoking some days now.

Stroke

Sometimes called a brain attack; occurs when a clot blocks the blood supply to the brain or when a blood vessel in the brain bursts.

*This term is defined using BRFSS standards.

2018 Florida Behavioral Risk Factor Surveillance System Data

Healthy People 2020 Objectives

Alcohol Consumption

SA-14. Reduce the proportion of persons engaging in binge drinking of alcoholic beverages

SA-15. Reduce the proportion of adults who drank excessively in the previous 30 days

Arthritis

AOCBD-2. Reduce the proportion of adults with doctor-diagnosed arthritis who experience a limitation in activity due to arthritis or joint symptoms

Cardiovascular Disease

HDS-1. (Developmental) Increase overall cardiovascular health in the U.S. population

Cholesterol Awareness

HDS-7. Reduce the proportion of adults with high total blood cholesterol levels

Diabetes

D-9. Increase the proportion of adults with diabetes who have at least an annual foot examination

D-10. Increase the proportion of adults with diabetes who have an annual dilated eye examination

D-11. Increase the proportion of adults with diabetes who have a glycosylated hemoglobin (A1C) measurement at least twice a year

D-13. Increase the proportion of adults with diabetes who perform self-blood glucose-monitoring at least once daily

D-14. Increase the proportion of persons with diagnosed diabetes who receive formal diabetes education

Health Care Access & Coverage

AHS-1. Increase the proportion of persons with medical insurance

AHS-3. Increase the proportion of persons with a usual primary care provider

AHS-6.2. Reduce the proportion of individuals who are unable to obtain or delay in obtaining necessary medical care

Health Status & Quality of Life

HRQOL/WB-1.1. Increase the proportion of adults who self-report good or better physical health

HRQOL/WB-1.2. Increase the proportion of adults who self-report good or better mental health

HIV/AIDS Screening

HIV-14.1. Increase the proportion of adolescents and adults who have ever been tested for HIV

Hypertension Awareness & Control

HDS-5.1. Reduce the proportion of adults with hypertension

2018 Florida Behavioral Risk Factor Surveillance System Data

Healthy People 2020 Objectives

Immunization

IID-12.7. Increase the percentage of noninstitutionalized adults aged 65 years and older who are vaccinated annually against seasonal influenza

IID-12.12. Increase the percentage of children and adults who are vaccinated annually against seasonal influenza

IID-13. Increase the percentage of adults who are vaccinated against pneumococcal disease

IID-13.1. Increase the percentage of noninstitutionalized adults aged 65 years and older who are vaccinated against pneumococcal disease

Injury Prevention

IVP-15. Increase use of safety belts

Kidney Disease

CKD-1. Reduce the proportion of the U.S. population with chronic kidney disease

Overweight & Obesity

NWS-8. Increase the proportion of adults who are at a healthy weight

NWS-9. Reduce the proportion of adults who are obese

Physical Activity & Nutrition

PA-1. Reduce the proportion of adults who engage in no leisure-time physical activity

NWS-14. Increase the contribution of fruits to the diets of the population aged 2 years and older

NWS-15. Increase the variety and contribution of vegetables to the diets of the population aged 2 years and older

PA-2.1. Increase the proportion of adults who engage in aerobic physical activity of at least moderate intensity for at least 150 minutes/week, or 75 minutes/week of vigorous intensity, or an equivalent combination

PA-2.3. Increase the proportion of adults who perform muscle-strengthening activities on 2 or more days of the week

Tobacco Use & Exposure

TU-1.1. Reduce cigarette smoking by adults

TU-4. Increase smoking cessation attempts by adult smokers

Vision Impairment

V-5. Reduce visual impairment

The Healthy People 2020 objectives listed in this appendix are directly or indirectly related to the data presented.



Prepared by:

Justine Gunderson, PhD
Arju Gaggar, MPH
Leah L. Atwell, MPH

If you have any questions or comments
please contact:

Florida Department of Health
Division of Community Health Promotion
Public Health Research
4052 Bald Cypress Way, Bin A-24
Tallahassee, Florida 32399-1744

Phone: 850-245-4793 or 866-779-6122
BRFSS@flhealth.gov
www.floridahealth.gov/BRFSS