



## Florida Arbovirus Surveillance Week 5: February 1-7, 2026

Arbovirus surveillance in Florida includes endemic mosquito-borne viruses such as West Nile virus (WNV), Eastern equine encephalitis virus (EEEV), and St. Louis encephalitis virus (SLEV), as well as exotic viruses such as dengue virus (DENV), chikungunya virus (CHIKV), Zika virus (ZIKV), and California encephalitis group viruses (CEV). Malaria, a parasitic mosquito-borne disease, is also included. During the period of February 1-7, 2026, the following arboviral activity was recorded in Florida.

[This report contains information for 2025 and 2026.](#)

**WNV activity:** No human cases of WNV infection were reported this week. No horses with WNV infection were reported this week. No sentinel chickens tested positive for antibodies to WNV this week. In 2025, positive samples from six symptomatic humans, seven asymptomatic blood donors, one horse, one duck, and 402 sentinel chickens have been reported from 29 counties.

**SLEV activity:** No human cases of SLEV infection were reported this week. No sentinel chickens tested positive for antibodies to SLEV this week. In 2025, positive samples from four sentinel chickens have been reported from three counties.

**EEEV activity:** No human cases of EEEV infection were reported this week. No horses with EEEV infection were reported. No sentinel chickens tested positive for antibodies to EEEV. In 2025, positive samples from nine horses, two emus, one emu flock, one goat, one bird, and 62 sentinel chickens have been reported from 22 counties.

**International Travel-Associated Dengue:** Two cases of dengue were reported this week in persons that had international travel. In 2025, 431 travel-associated dengue cases have been reported. In 2026, eight travel-associated dengue cases have been reported.

**Dengue Cases Acquired in Florida:** No cases of locally acquired dengue were reported this week. In 2025, positive samples from 62 humans and four mosquito pools have been reported from four counties.

**International Travel-Associated Chikungunya Fever Cases:** Twenty-seven cases of chikungunya fever were reported this week in persons that had international travel. In 2025, 370 cases of travel-associated chikungunya fever have been reported. In 2026, sixteen cases of travel-associated chikungunya fever have been reported.

**Chikungunya Fever Cases Acquired in Florida:** No cases of locally acquired chikungunya fever were reported this week. In 2025, one case of locally acquired chikungunya fever has been reported.

**International Travel-Associated Oropouche Fever cases:** No cases of Oropouche fever were reported this week. In 2025, one case of travel-associated Oropouche fever has been reported.

**International Travel-Associated Zika Fever Cases:** No cases of Zika fever were reported this week in persons that had international travel. In 2025, no travel-associated Zika fever cases have been reported.

**Zika Fever Cases Acquired in Florida:** No cases of locally acquired Zika fever were reported this week. In 2025, no cases of locally acquired Zika fever have been reported.

**Advisories/Alerts:** Leon County is currently under a mosquito-borne illness advisory. Miami-Dade County is currently under a mosquito-borne illness alert.

There are currently multiple travel health notices from the Centers for Disease Control and Prevention related to mosquito-borne diseases.

Dengue			Oropouche	Yellow Fever	Chikungunya			Rift Valley Fever	Malaria
Africa and Middle East	Americas	Asia and the Pacific Islands	Americas	Americas	Africa	Americas	Asia	Africa	Africa
Afghanistan	Colombia	Bangladesh	Brazil	Colombia	Seychelles	Cuba	Sri Lanka	Mauritania	Ethiopia
Mauritania	Cuba	Cook Islands, NZ	Cuba			Suriname		Senegal	
Samoa	Nicaragua	Mali	Panama						
Sudan		Vietnam	Peru						

Level 1 Travel Health Notice, Level 2 Travel Health Alert: [wwwnc.cdc.gov/travel/notices](http://wwwnc.cdc.gov/travel/notices).

For a map of arboviral disease activity in the United States visit: <https://www.cdc.gov/fight-the-bite/at-risk/index.html>.

## 2025 Human Case Summary

**2025 West Nile Virus Illness Acquired in Florida:** In 2025, six human cases of WNV illness acquired in Florida have been reported in Clay (July), Duval (August), and Escambia (August, October) counties. Seven asymptomatic blood donors have been reported in Bay (October), Escambia (June, July, August), Miami-Dade (July), and St. Johns (June) counties.

**2025 International Travel-Associated Oropouche Cases:** One case with onset in 2025 has been reported in an individual with travel history to an Oropouche-endemic area in the two weeks prior to onset. County reporting the case was Miami-Dade. Country of origin was Cuba.

**2025 International Travel-Associated Chikungunya Cases:** Three hundred seventy cases with onset in 2025 have been reported in individuals with travel history to a chikungunya-endemic area in the two weeks prior to onset. Counties reporting cases were: Brevard, Broward (37), Charlotte, Clay, Collier (9), Flagler, Hendry, Hillsborough (31), Lake, Lee (17), Marion (2), Miami-Dade (240), Orange (5), Osceola (3), Palm Beach (5), Pasco (2), Pinellas (3), Polk (2), Sarasota (3), Seminole (3), Volusia (2). Six cases were reported in non-FI residents. Countries of origin were: Bangladesh (2), Bolivia, Brazil (2), Colombia, Cuba (357), India (2), Indonesia, Philippines, Sri Lanka (2), Thailand (1).

**2026 International Travel-Associated Chikungunya Cases:** Sixteen cases with onset in 2026 have been reported in individuals with travel history to a chikungunya-endemic area in the two weeks prior to onset. Counties reporting cases were: Alachua, Hillsborough, Miami-Dade (10), Monroe, Orange, and Palm Beach (2). Country of origin was: Cuba (16).

**2025 Chikungunya Cases Acquired in Florida:** One case of locally acquired chikungunya fever has been reported in Miami-Dade County with onset in December.

**2025 International Travel-Associated Dengue Cases:** Four hundred thirty-one cases with onset in 2025 have been reported in individuals with travel to a dengue-endemic area in the two weeks prior to onset. Counties reporting cases were: Bay, Brevard (2), Broward (22), Charlotte, Citrus, Clay, Collier (7), Duval (5), Escambia, Hendry (2), Hernando (2), Hillsborough (27), Indian River, Lake (4), Lee (17), Manatee (2), Marion, Miami-Dade (271), Monroe (6), Okeechobee (3), Orange (10), Osceola (4), Palm Beach (14), Pasco (2), Pinellas (8), Polk (5), Sarasota (3), Seminole, St. Johns, St. Lucie (4), and Volusia (2). Thirteen cases were reported in non-Florida residents. In 2025, 363 cases of dengue reported in Florida have been serotyped by PCR. Please see the table below for a breakdown of cases by country of origin and serotype.

Country of Exposure	DENV-1	DENV-2	DENV-3	DENV-4	DENV2/ DENV3	Unknown	Total
Antigua and Barbuda			1				1
Argentina	2						2
Bahamas			1				1
Bonaire			1				1
Brazil	1	4	1			3	9
Colombia	1	1	2			2	6
Cuba		28	22	222	1	41	314
Cuba/Mexico						1	1
Curacao			1				1
Dominica			1				1
Dominican Republic			1				1
Ecuador			3				3
El Salvador			4			2	6
French Polynesia	1					1	2
Guatemala			2				2
Guyana		7				1	8
India						1	1
Mexico		2	9				11
Nicaragua	1		16			6	23
Pakistan	1						1
Panama			1				1
Peru			1			1	2
Philippines						1	1
Puerto Rico		2	14	1		4	21
Puerto Rico/Dominican Republic		1				1	2
Sri Lanka						1	1
St. Barts			3				3
St. Barts/St. Martin			1				1
Surinam		1					1
US Virgin Islands		1				2	3
<b>Total</b>	<b>7</b>	<b>47</b>	<b>85</b>	<b>223</b>	<b>1</b>	<b>68</b>	<b>431</b>

**2026 International Travel-Associated Dengue Cases:** Eight cases with onset in 2026 have been reported in individuals with travel to a dengue-endemic area in the two weeks prior to onset. Counties reporting cases were: Broward (2), Lake, Miami-Dade, Osceola, Palm Beach, Polk, and St. Lucie. One case was reported in a non-Florida resident. In 2026, eight cases of dengue reported in Florida have been serotyped by PCR. Please see the table below for a breakdown of cases by country of origin and serotype.

Country of Exposure	DENV-2	DENV-3	Total
Cuba	1		1
Guyana	1		1
India	1		1
Indonesia	1		1
Mexico		1	1
Nicaragua		1	1
Puerto Rico		2	2
<b>Total</b>	<b>4</b>	<b>4</b>	<b>8</b>

**2025 Dengue Cases Acquired in Florida:** In 2025, 62 cases of locally acquired dengue have been reported in Brevard (35), Hillsborough, Miami-Dade (25), and Pasco counties with onset in February, May, June, July, August, September, October, and November. One case was reported in a non-Florida resident. Forty-eight cases have been serotyped by PCR. Please see the table below for a breakdown by county and serotype.

County of Exposure	DENV-1	DENV-2	DENV-3	DENV-4	Unknown	Total
Brevard			24		11	35
Hillsborough				1		1
Miami-Dade		7	3	12	3	25
Pasco	1					1
<b>Total</b>	<b>1</b>	<b>7</b>	<b>27</b>	<b>13</b>	<b>14</b>	<b>62</b>

**2025 International Travel-Associated Malaria Cases:** Forty-nine cases with onset in 2025 have been reported in individuals with travel history to a malaria-endemic area. Counties reporting cases were: Alachua (2), Brevard, Broward (5), Collier, Duval (2), Hillsborough (5), Lake, Leon, Manatee, Marion (2), Miami-Dade (5), Nassau (2), Orange (5), Palm Beach (4), Pasco, Polk (3), Sarasota, Seminole, St. Lucie (4), and Volusia (2). Eleven cases were reported in non-Florida residents. Please see the table below for a breakdown of cases by country of origin and *Plasmodium* species.

Country of Exposure	<i>Plasmodium falciparum</i>	<i>Plasmodium ovale</i>	<i>Plasmodium vivax</i>	Unknown	Total
Africa	4				4
Angola	1				1
Brazil			1		1
Burkina Faso	1				1
Cameroon	1				1
Central America			1		1
Central Africa	1				1
Central/South America			2		2
Côte D'Ivoire	1				1
Gambia	1				1
Ghana	2				2
Guinea	1				1
Haiti	1				1
Honduras			1		1
India			1		1
Liberia	2				2
Malawi	1				1
Nicaragua			1		1
Nigeria	17	2		1	20
Peru			1		1
Rwanda	1				1
Sierra Leone	1				1
Uganda	1				1
Uganda/Kenya	1				1
<b>Total</b>	<b>38</b>	<b>2</b>	<b>8</b>	<b>1</b>	<b>49</b>

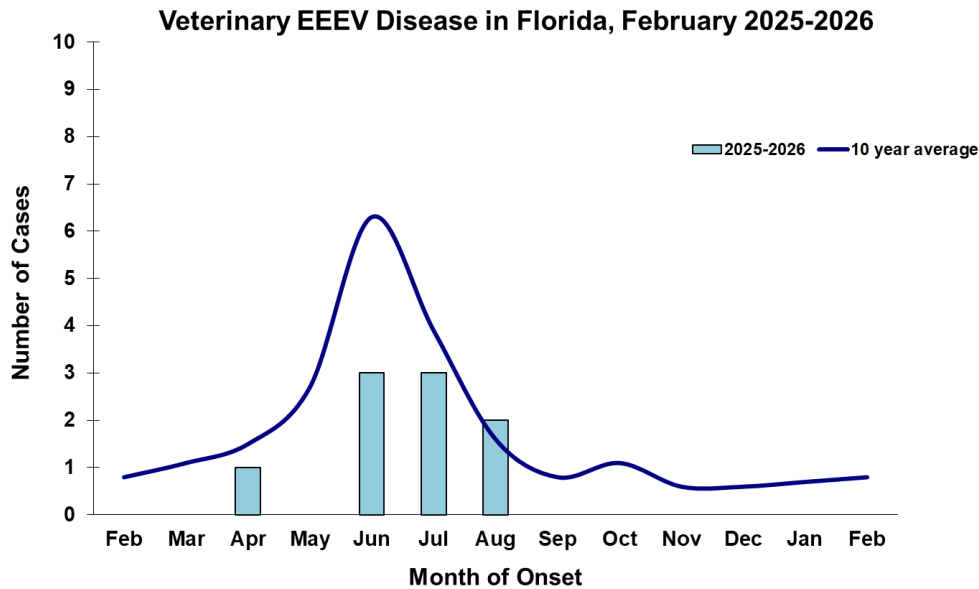
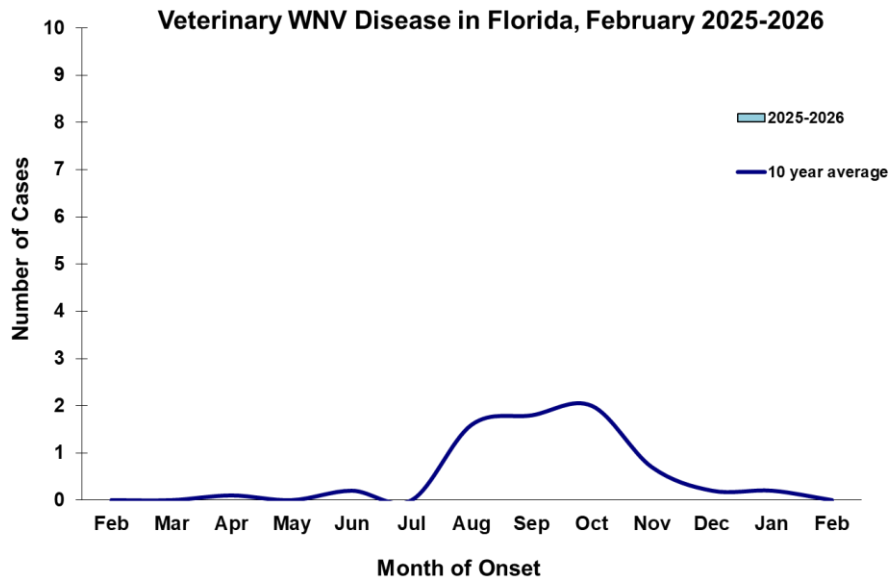
**2026 International Travel-Associated Malaria Cases:** Four cases with onset in 2026 have been reported in individuals with travel history to a malaria-endemic area. Counties reporting cases were: Broward and Miami-Dade (3). Please see the table below for a breakdown of cases by country of origin and *Plasmodium* species.

Country of Exposure	<i>Plasmodium falciparum</i>	Total
Cameroon	1	1
Gabon	1	1
Nigeria	2	2
<b>Total</b>	<b>4</b>	<b>4</b>

## Veterinary Cases\*\*

\*\*Veterinary cases are reported by date of onset. Only mammalian veterinary cases are included in the graphs.

No veterinary cases were reported this week.



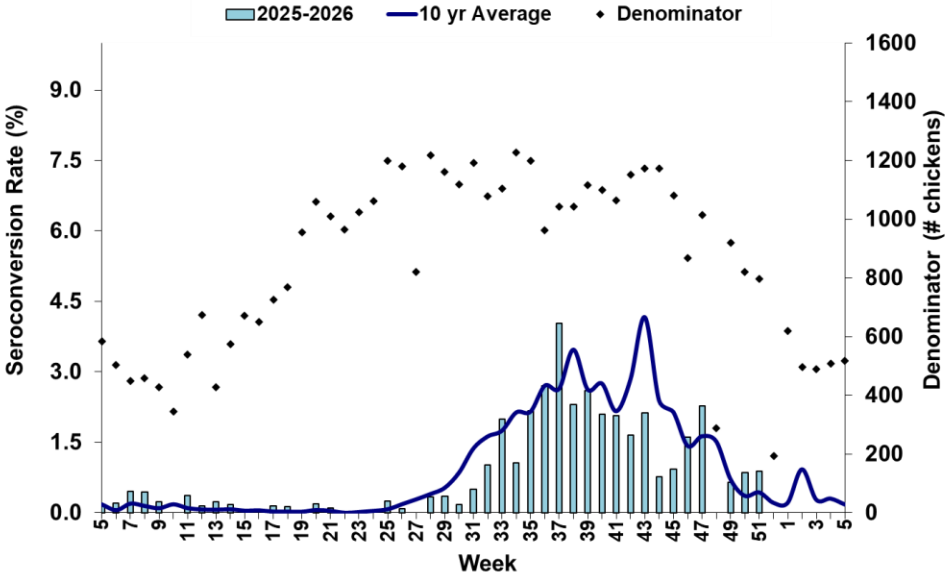
## Sentinel Chickens

The table below is for the reporting of confirmatory laboratory results from this week. Some of the samples were collected at earlier dates. The date of collection is recorded for samples collected on that day along with the total number of positives and the corresponding seroconversion rate for the week the sample was collected.

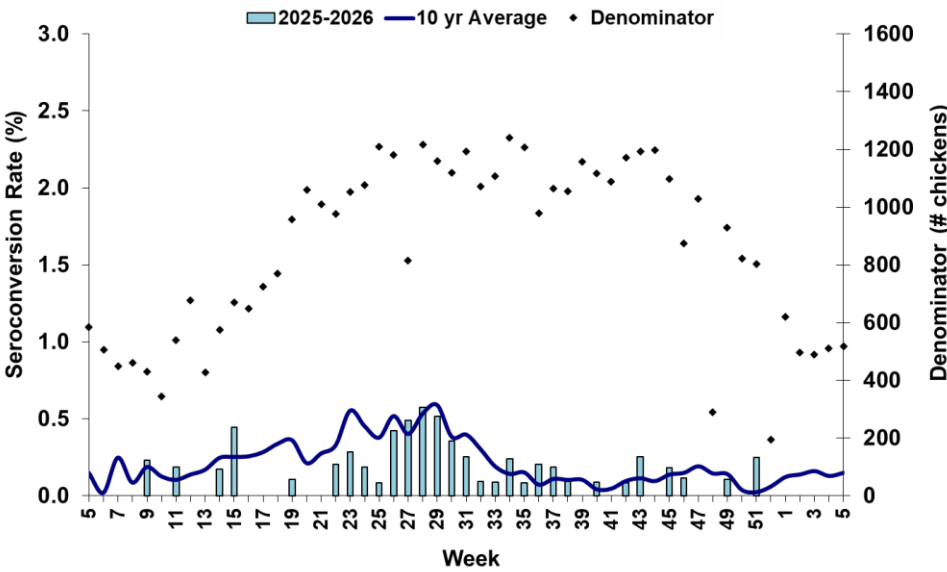
No sentinel chickens tested positive for antibodies to SLEV, WNV, EEEV, or HJV this week.

County	Collection Date	Seroconversion Rates (%)						County Totals	
		Flavi	SLEV	WNV	Alpha	EEEV	HJV	Collection Week	YTD

Sentinel Seroconversions to WNV in Florida, 2025–2026



Sentinel Seroconversions to EEEV in Florida, 2025–2026



**Mosquito Pools**

No mosquito pools tested positive for EEEV or WNV this week.

County	Collection Date	Result	Species	County YTD
--------	-----------------	--------	---------	------------

## Dead Birds

The Fish and Wildlife Conservation Commission (FWC) collects reports of dead birds, which can be an indication of arbovirus circulation in an area. This week, 101 reports representing a total of 219 dead birds, including two crows, one jay, 70 raptors, and one dove, were received from 31 counties.

In 2025, 1563 reports representing a total of 3778 dead birds (106 crows, 50 jays, 319 raptors, 296 doves) were received from 58 of Florida's 67 counties.

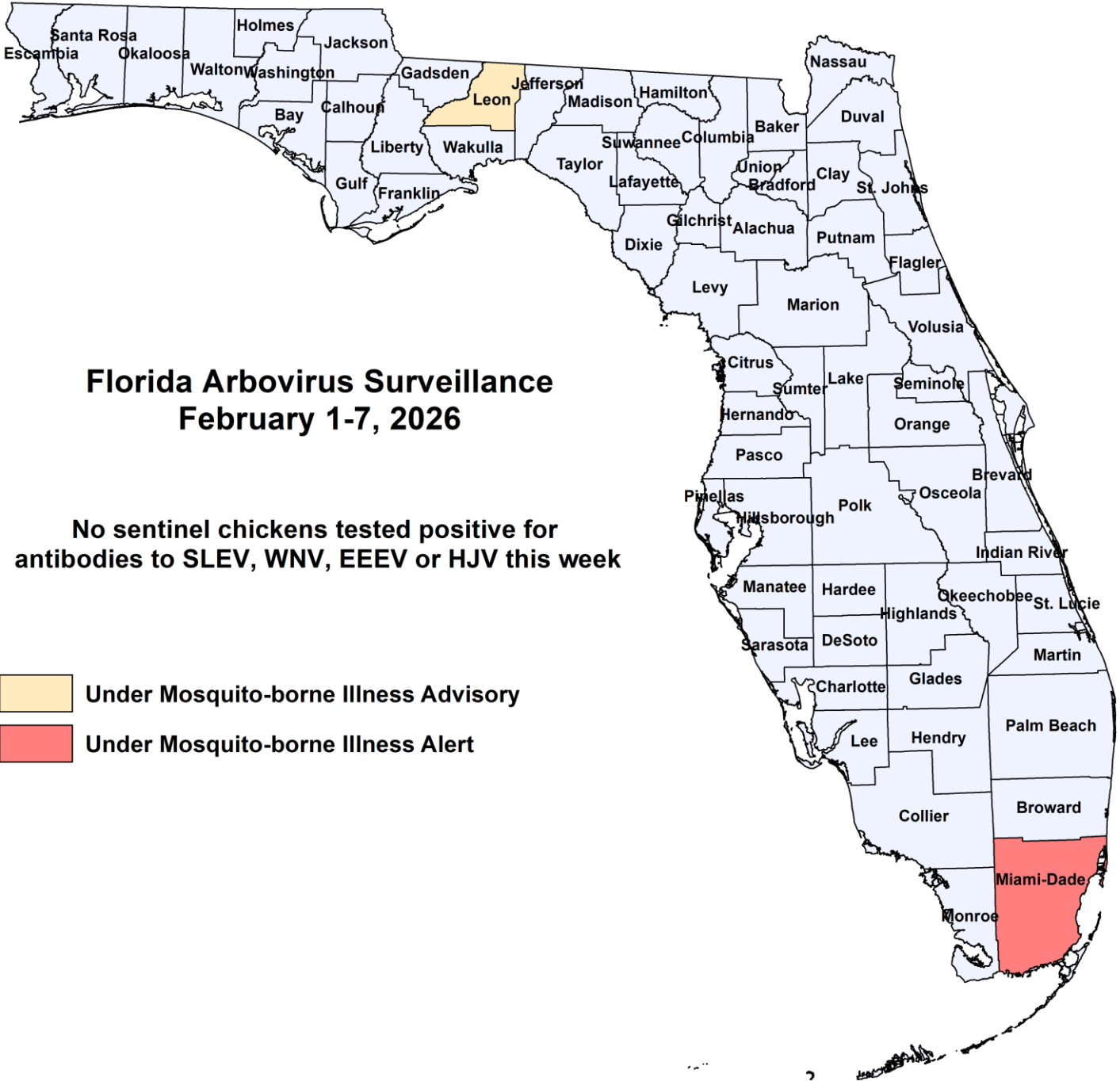
### 2025

County	Total Dead Birds	Crows	Jays	Raptors	Doves
Alachua	1	0	0	0	0
Miami-Dade	1	0	0	0	0
Orange	14	0	0	0	0
St. Johns	12	0	0	0	0

In 2026, 398 reports representing a total of 980 dead birds (5 crows, 2 jays, 183 raptors, 9 doves) were received from 45 of Florida's 67 counties.



### 2026

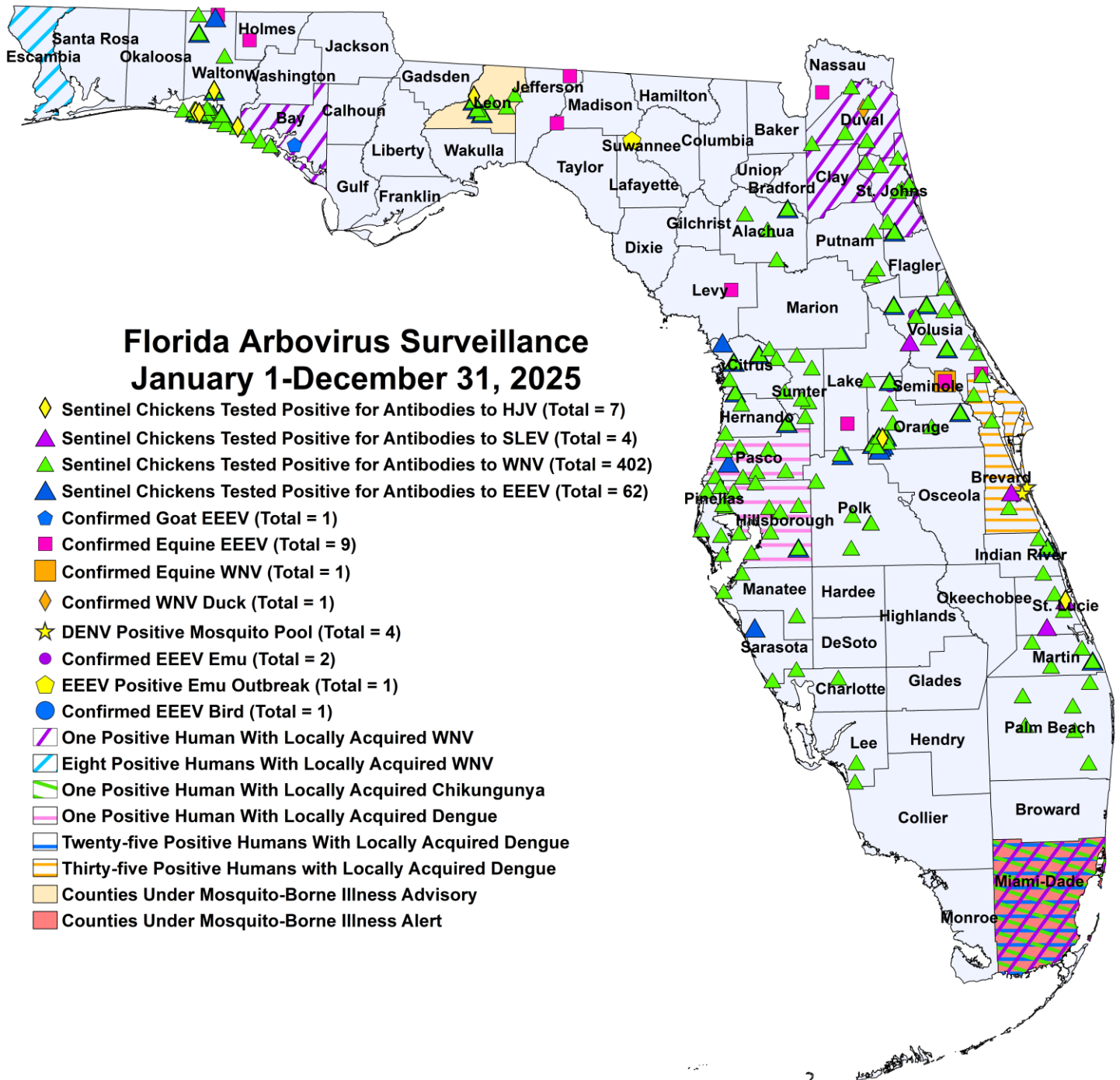
County	Total Dead Birds	Crows	Jays	Raptors	Doves
Alachua	25	0	0	22	0
Bay	1	0	0	0	0
Brevard	24	0	0	0	0
Broward	1	0	0	1	0
Citrus	2	0	0	2	0
Collier	6	0	0	0	0
Columbia	11	0	0	0	0
Duval	2	0	0	0	0
Escambia	4	0	0	0	0
Franklin	2	0	0	0	0
Hamilton	1	0	0	1	0
Hillsborough	2	1	0	0	0
Indian River	4	0	0	1	0
Lee	5	0	0	0	0
Manatee	4	0	0	0	0
Martin	2	0	0	0	0
Miami-Dade	13	0	0	0	0
Okaloosa	1	0	0	0	0
Okeechobee	1	0	0	0	0
Orange	14	0	0	2	0
Osceola	10	0	0	0	0
Palm Beach	5	0	0	1	0
Pinellas	18	0	1	1	0
Polk	4	0	0	1	0
Santa Rosa	3	0	0	0	0
Sarasota	1	0	0	0	1
Seminole	1	0	0	0	0
St. Johns	16	0	0	4	0
Volusia	4	1	0	3	0
Wakulla	31	0	0	31	0
Walton	1	0	0	0	0

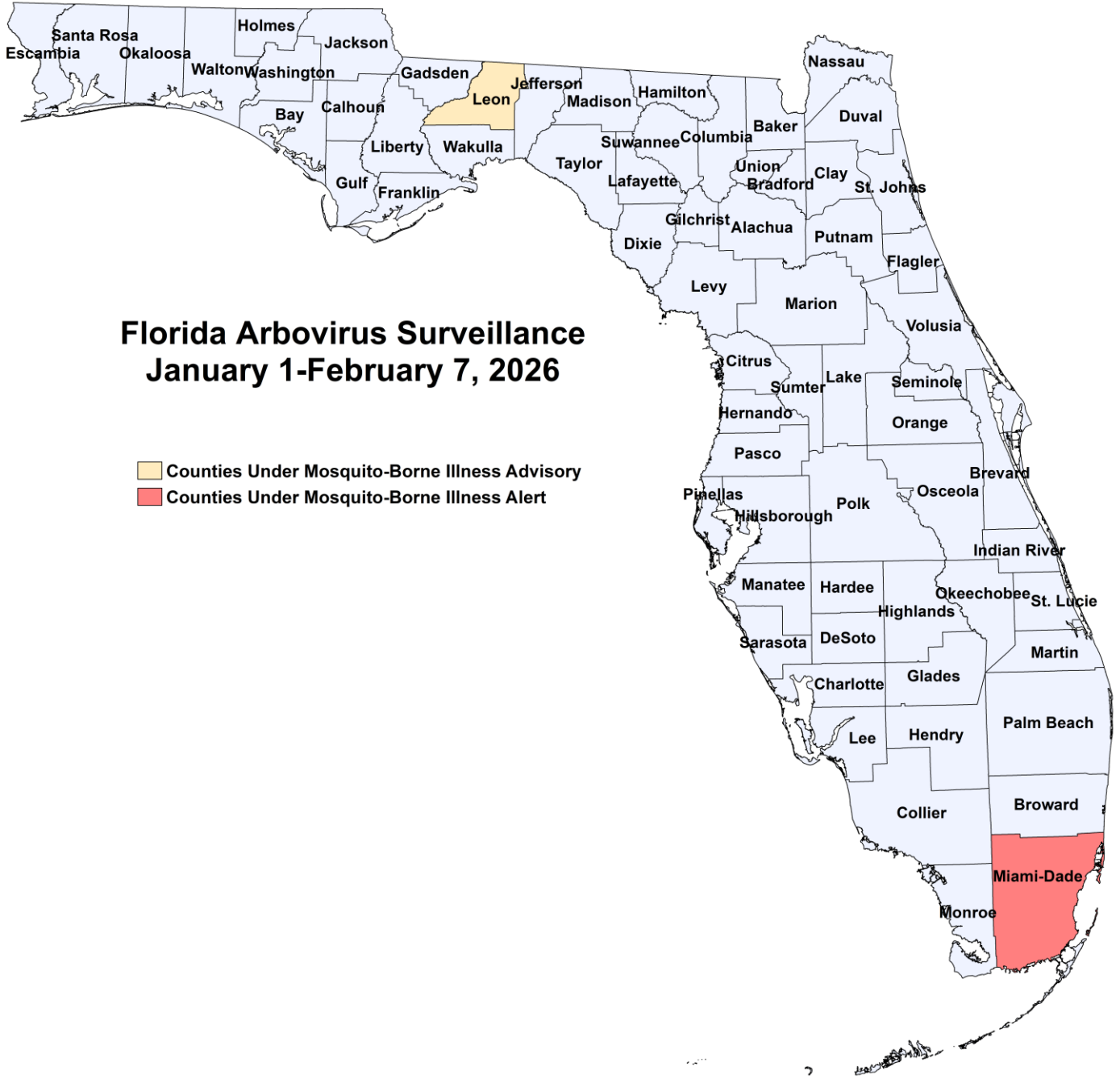


**Florida Arbovirus Surveillance  
February 1-7, 2026**

**No sentinel chickens tested positive for  
antibodies to SLEV, WNV, EEEV or HJV this week**

-  Under Mosquito-borne Illness Advisory
-  Under Mosquito-borne Illness Alert





**2025 Mosquito-Borne Disease Activity by County**

County	Humans	Equines	Sentinel Chickens	Other
<b>Alachua</b>			2 EEEV (7/24), (7/31) 19 WNV (7/24), (7/31), (8/5), (9/4), (9/8), (9/16), (9/23), (10/14), (10/23), (10/28), (11/18)	
<b>Bay</b>	1 asymptomatic WNV blood donor (October)		26 WNV (3/24), (8/4), (9/8), (9/15), (9/22), (10/6), (10/13), (10/20), (10/27), (11/10), (11/17), (12/1), (12/15)	1 EEEV goat (7/23)

County	Humans	Equines	Sentinel Chickens	Other
<b>Brevard</b>	35 dengue (May, July (10), August (20), September (3), October)	1 EEEV (7/18)	1 SLEV (7/9) 8 WNV (2/7), (7/18), (9/12), (10/1), (10/17), (10/24), (10/31)	4 DENV-3 mosquito pools (Ae. aegypti 7/24, 8/6, 9/4)
<b>Citrus</b>			9 EEEV (3/11), (4/1), (4/8), (5/28), (6/24), (7/7), (7/9), (9/30) 21 WNV (1/6), (2/10), (2/17), (8/12), (9/3), (9/9), (9/23), (9/30), (10/7), (10/14), (10/21), (10/28), (11/4)	
<b>Duval</b>	1 WNV (August)		15 WNV (8/12), (8/18), (8/25), (9/2), (9/23), (9/29)	1 WNV duck (8/5)
<b>Charlotte</b>			2 WNV (7/18), (10/3)	
<b>Clay</b>	1 WNV (July)			
<b>Escambia</b>	4 WNV (August (3), October) 4 asymptomatic WNV blood donors (June (2), July, August)			
<b>Hernando</b>			1 EEEV (7/21) 7 WNV (9/29), (10/6), (11/10)	
<b>Hillsborough</b>	1 dengue (July)		1 EEEV (7/14) 30 WNV (4/21), (8/11), (8/18), (8/25), (9/2), (9/8), (9/11), (9/22), (9/30), (10/13), (10/27), (11/17), (12/3)	
<b>Holmes</b>		1 EEEV (8/19)		
<b>Indian River</b>			1 EEEV (12/18) 3 WNV (1/2), (10/16)	
<b>Jefferson</b>		1 EEEV (6/12)		
<b>Lafayette</b>				1 EEEV emu flock outbreak (7/6 for the first emu)
<b>Lake</b>		1 EEEV (4/2)		
<b>Lee</b>			2 WNV (11/11)	
<b>Leon</b>			4 EEEV (7/22), (8/13), (9/17), (10/13) 1 HJV (10/20) 13 WNV (7/22), (8/5), (8/13), (9/2), (9/9), (9/17), (10/13), (10/20), (11/4)	
<b>Levy</b>		1 EEEV (6/20)		
<b>Madison</b>		1 EEEV (6/30)		
<b>Manatee</b>			3 WNV (9/16), (10/21)	
<b>Martin</b>			1 EEEV (10/23) 9 WNV (9/11), (9/18), (9/25), (10/9), (10/16), (10/23), (11/6), (11/13)	
<b>Nassau</b>		1 EEEV (7/21)		

County	Humans	Equines	Sentinel Chickens	Other
<b>Miami-Dade</b>	1 Chikungunya (December) 25 dengue (February, June, August (8), September (6), October (7), November (2)) 1 asymptomatic WNV blood donor (July)			
<b>Orange</b>			21 EEEV (2/24), (4/7), (6/2), (6/9), (6/16), (6/23), (6/30), (7/14), (7/21), (7/28), (8/4), (8/18), (8/25), (9/2), (11/3), (11/10), (12/1), (12/16) 1 HJV (7/14) 16 WNV (3/31), (8/4), (8/25), (9/2), (9/9), (9/15), (10/6), (10/13), (12/2), (12/28)	1 EEEV emu (1/1) 1 white-headed buffalo EEEV (12/31)
<b>Palm Beach</b>			36 WNV (1/7), (1/21), (1/27), (2/10), (2/17), (2/24), (3/10), (3/17), (4/29), (5/13), (6/16), (8/12), (9/8), (9/9), (9/23), (10/6), (10/20), (11/17)	
<b>Pasco</b>	1 dengue (July)		1 EEEV (7/7) 31 WNV (1/13), (8/18), (9/2), (9/8), (9/15), (9/22), (9/30), (10/6), (10/14), (10/20), (10/27), (11/3), (11/10), (11/21), (12/1), (12/19)	
<b>Pinellas</b>			32 WNV (1/6), (7/7), (8/4), (8/11), (8/18), (8/25), (9/2), (9/8), (9/15), (9/23), (9/29), (10/20), (10/21), (11/10), (11/17), (11/18), (12/8), (12/15)	
<b>Polk</b>			2 EEEV (6/2), (6/9) 16 WNV (6/16), (8/29), (9/2), (9/5), (9/12), (9/19), (9/26), (9/29), (10/3), (10/6), (10/20), (11/7), (11/14)	
<b>Putnam</b>			9 WNV (7/28), (8/11), (8/25), (9/8), (9/22)	
<b>Sarasota</b>			1 EEEV (7/8) 3 WNV (8/22), (8/29)	
<b>Seminole</b>		1 EEEV (1/5) 1 WNV (1/5)		
<b>St. Johns</b>	1 asymptomatic WNV blood donor (June)		2 EEEV (9/3), (9/8) 15 WNV (8/25), (9/3), (9/8), (9/15), (9/22), (10/7), (10/14), (10/20), (11/3), (11/10)	
<b>St. Lucie</b>			1 HJV (7/11) 2 SLEV (7/10), (8/20) 4 WNV (8/21), (9/24), (10/1), (10/20)	
<b>Sumter</b>			6 WNV (8/25), (9/8), (9/23), (9/30), (10/7)	

County	Humans	Equines	Sentinel Chickens	Other
<b>Volusia</b>			5 EEEV (1/14), (4/8), (7/28), (12/29) 1 SLEV (10/20) 27 WNV (6/23), (7/7), (7/28), (8/11), (8/25), (9/2), (9/8), (9/15), (9/22), (9/29), (10/13), (10/20), (11/3), (11/17), (12/8)	1 EEEV emu (1/2)
<b>Walton</b>		1 EEEV (8/1)	11 EEEV (5/5), (6/2), (6/23), (6/30), (7/7), (7/14), (8/19) 4 HJV (6/23), (7/14), (10/20) 49 WNV (5/19), (7/14), (8/4), (8/11), (8/25), (9/2), (9/9), (9/15), (9/16), (9/29), (10/6), (10/7), (10/20), (11/3), (11/10), (11/17), (12/1), (12/8), (12/15)	

### Acknowledgements and Data Sources

Contributors: Andrea Morrison, PhD, MSPH, Rebecca Zimler, PhD, MPH, Olga Ospina, MPH, and Danielle Stanek, DVM, DOH Bureau of Epidemiology; Lea Heberlein, DrPH; Peter Dumoulin, PhD, Maribel Castaneda, Edgar Kopp, MS, Brittany Rowlette, and Amanda Davis, BS; DOH Bureau of Public Health Laboratories.

**For more surveillance information, please see the DOH website at:** [www.floridahealth.gov/diseases-and-conditions/mosquito-borne-diseases/surveillance.html](http://www.floridahealth.gov/diseases-and-conditions/mosquito-borne-diseases/surveillance.html)

**For arbovirus surveillance information for the United States, please see the Centers for Disease Control and Prevention website at:** [www.cdc.gov/ncidod/dvbid/westnile/surv&control.htm](http://www.cdc.gov/ncidod/dvbid/westnile/surv&control.htm)

Case tallies included in the weekly Florida arbovirus surveillance report include confirmed and probable cases for EEE, WNV infection, SLE, dengue, chikungunya, and malaria by date of onset. Suspect cases are not included. Activity is mapped by county of exposure rather than county of residence. Case definitions being used in Florida are consistent with national criteria provided by the Council of State and Territorial Epidemiologists (CSTE) and may be viewed at: [www.floridahealth.gov/diseases-and-conditions/disease-reporting-and-management/disease-reporting-and-surveillance/index.html](http://www.floridahealth.gov/diseases-and-conditions/disease-reporting-and-management/disease-reporting-and-surveillance/index.html). Case tallies reported by CDC do not include suspect cases and cases are reported by patient state of residence rather than where the exposure occurred. Data is provided by county health departments, Department of Health Bureau of Public Health Laboratories, Department of Agriculture and Consumer Services, mosquito control agencies, Florida Fish and Wildlife Conservation Commission, medical providers and veterinarians. Equine cases are provided by the Department of Agriculture and Consumer Services.