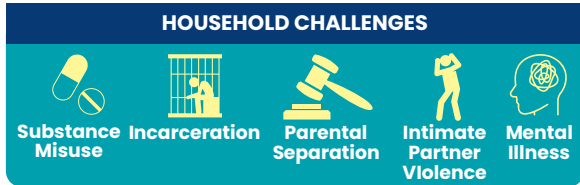


CRITICAL PUBLIC HEALTH CONCERN

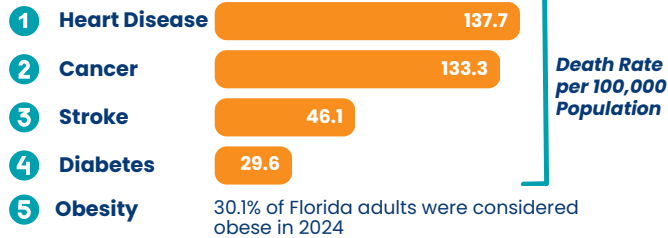
Adverse childhood experiences, or ACEs, are traumatic events that occur in childhood such as abuse, neglect, or household challenges that affect a person's mental and physical health, well-being, and success in adulthood.



Source: 2024 Florida Behavioral Risk Factor Surveillance System (BRFSS)

LONG-TERM IMPLICATIONS ON HEALTH

5 of the 10 leading causes of death are associated with ACEs



ACEs are associated with increased risk of overdose and suicide later in life, having a generational impact:

- Florida's unintentional overdose rate was 20.51 per 100,000 population in 2024.
- Florida's suicide rate was 13.89 per 100,000 population in 2024.

REDUCING THE IMPACT OF ACEs

Strengthening economic supports for families:

- Paid time off
- Earned income or child tax credits
- Family-friendly work policies

Give kids a good start:

- Early learning programs
- Affordable preschool and childcare

Provide access to safe and supportive housing:

- Allocate needed housing resources

Funding ACEs screenings in health care settings

PREVENTION OF ACEs BENEFITS US ALL

Reduce Health Care Costs	Increase Economic Productivity	Improve Productive Workforce	Achievement and Life Success	Reduce Incarceration	Improve Mental Well-being	Safer and Supportive Environments
--------------------------	--------------------------------	------------------------------	------------------------------	----------------------	---------------------------	-----------------------------------

1 PacesConnection.com/blog/got-your-ace-resilience-scores • 2 FloridaHealth.gov/BRFSS • 3 FLHealthCHARTS.gov • 4 *The economic burden of child maltreatment in the U.S., 2015 - ScienceDirect*

- **Adverse childhood experiences** and their associated harms are preventable.
- **Creating safe, stable, nurturing relationships and environments** can prevent ACEs and help all children reach their full health and life potential.
- **Preventing adverse childhood experiences** requires understanding and addressing risk and protective factors.

- **Risk factors** are characteristics that may increase the likelihood of experiencing adverse childhood experiences.
- **Protective factors** are characteristics that may decrease the likelihood of experiencing adverse childhood experiences.

NATIONAL AND STATE RESOURCES

- Florida Lifeline** 988
- Florida Abuse Hotline** 800-962-2873
- Florida Narcotics Anonymous** 844-623-5674
- Florida Human Trafficking Hotline** 855-352-7233
- Florida Domestic Violence Hotline** 800-500-1119
- Florida Sexual Violence Information Line** 888-956-7273
- National Teen Dating Abuse Hotline** 866-331-9474
- National Disaster Distress Helpline** 800-985-5990
- Local Support and Resources** 211

