



Florida Arbovirus Surveillance Week 10: March 8-14, 2026

Arbovirus surveillance in Florida includes endemic mosquito-borne viruses such as West Nile virus (WNV), Eastern equine encephalitis virus (EEEV), and St. Louis encephalitis virus (SLEV), as well as exotic viruses such as dengue virus (DENV), chikungunya virus (CHIKV), Zika virus (ZIKV), and California encephalitis group viruses (CEV). Malaria, a parasitic mosquito-borne disease, is also included. During the period of March 8-14, 2026, the following arboviral activity was recorded in Florida.

[This report contains information for 2026 only. Please visit the following website for up-to-date 2025 numbers as final data cleaning occurs: Floridahealth.gov/statistics-data/population-surveillance/arbovirus-surveillance](https://www.floridahealth.gov/statistics-data/population-surveillance/arbovirus-surveillance)

WNV activity: No human cases of WNV infection were reported this week. No horses with WNV infection were reported this week. No sentinel chickens tested positive for antibodies to WNV this week. In 2026, positive samples from two sentinel chickens have been reported from two counties.

SLEV activity: No human cases of SLEV infection were reported this week. No sentinel chickens tested positive for antibodies to SLEV this week. In 2026, no cases of SLEV have been reported.

EEEV activity: No human cases of EEEV infection were reported this week. No horses with EEEV infection were reported. No sentinel chickens tested positive for antibodies to EEEV this week. In 2026, a positive sample from one sentinel chicken has been reported from one county.

International Travel-Associated Dengue: One case of dengue was reported this week in a person that had international travel. In 2026, 17 travel-associated dengue cases have been reported.

Dengue Cases Acquired in Florida: No cases of locally acquired dengue were reported this week. In 2026, no cases of locally acquired dengue have been reported.

International Travel-Associated Chikungunya Fever Cases: No cases of chikungunya fever were reported this week in persons that had international travel. In 2026, 23 cases of travel-associated chikungunya fever have been reported.

Chikungunya Fever Cases Acquired in Florida: No cases of locally acquired chikungunya fever were reported this week. In 2026, no cases of locally acquired chikungunya fever have been reported.

International Travel-Associated Oropouche Fever cases: No cases of Oropouche fever were reported this week. In 2026, no cases of travel-associated Oropouche fever have been reported.

International Travel-Associated Zika Fever Cases: No cases of Zika fever were reported this week in persons that had international travel. In 2026, no travel-associated Zika fever cases have been reported.

Zika Fever Cases Acquired in Florida: No cases of locally acquired Zika fever were reported this week. In 2026, no cases of locally acquired Zika fever have been reported.

Advisories/Alerts: Miami-Dade County is currently under a mosquito-borne illness alert.

There are currently multiple travel health notices from the Centers for Disease Control and Prevention related to mosquito-borne diseases.

Dengue			Oropouche	Yellow Fever	Chikungunya			Malaria
Africa and Middle East	Americas	Asia and the Pacific Islands	Americas	Americas	Africa	Americas	Asia and the Pacific Islands	Africa
Mali	Colombia	Afghanistan	Brazil	Colombia	Seychelles	Bolivia	Mayotte	Ethiopia
Mauritania	Cuba	Bangladesh	Cuba	Venezuela		Cuba		
Sudan	Guyana	Cook Islands, NZ	Panama			Suriname		
	Nicaragua	Maldives	Peru					
		New Caledonia						
		Pakistan						
		Samoa						
		Timor-Leste						
		Vietnam						

Level 1 Travel Health Notice, Level 2 Travel Health Alert: wwwnc.cdc.gov/travel/notices.

For a map of arboviral disease activity in the United States visit: <https://www.cdc.gov/fight-the-bite/at-risk/index.html>.

2026 Human Case Summary

2026 International Travel-Associated Chikungunya Cases: Twenty-three cases with onset in 2026 have been reported in individuals with travel history to a chikungunya-endemic area in the two weeks prior to onset. Counties reporting cases were: Alachua, Hillsborough (2), Miami-Dade (14), Monroe (2), Orange (2), and Palm Beach (2). Country of origin was: Cuba (23).

2026 International Travel-Associated Dengue Cases: Seventeen cases with onset in 2026 have been reported in individuals with travel to a dengue-endemic area in the two weeks prior to onset. Counties reporting cases were: Broward (3), Hernando, Lake, Miami-Dade (4), Orange, Osceola, Palm Beach, Polk, Sarasota, St. Johns, and St. Lucie (2). One case was reported in a non-Florida resident. In 2026, 16 cases of dengue reported in Florida have been serotyped by PCR. Please see the table below for a breakdown of cases by country of origin and serotype.

Country of Exposure	DENV-2	DENV-3	DENV-2/ DENV 3	DENV-4	Unknown	Total
Cuba	2	1	1	1		5
Guyana	1				1	2
India	1	1				2
Indonesia	1					1
Italy	1					1
Mexico		1				1
Nicaragua		2				2
Puerto Rico		3				3
Total	6	8	1	1	1	17

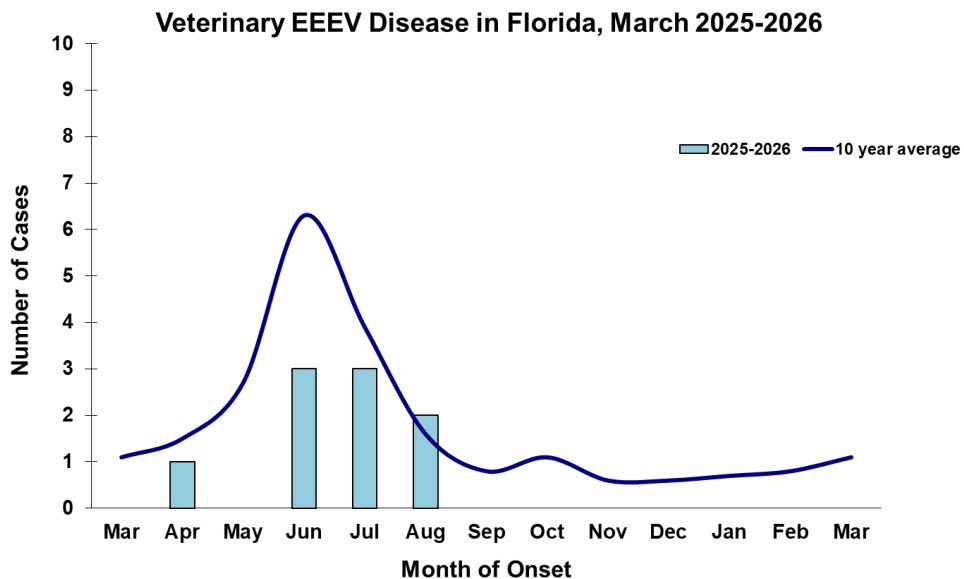
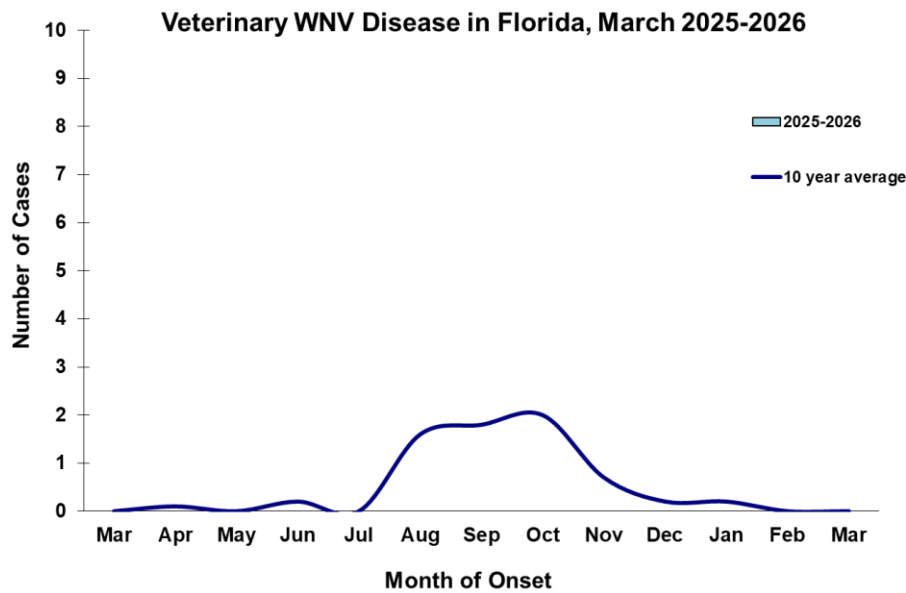
2026 International Travel-Associated Malaria Cases: Eight cases with onset in 2026 have been reported in individuals with travel history to a malaria-endemic area. Counties reporting cases were: Broward, Duval (2), Hernando, Miami-Dade (3), and Washington. Please see the table below for a breakdown of cases by country of origin and *Plasmodium* species.

Country of Exposure	<i>Plasmodium falciparum</i>	<i>Plasmodium ovale</i>	Total
Cameroon	1		1
Gabon	1		1
Kenya	1		1
Libya	1		1
Nigeria	2		2
Sudan	1		1
Uganda		1	1
Total	7	1	8

Veterinary Cases**

**Veterinary cases are reported by date of onset. Only mammalian veterinary cases are included in the graphs.

No veterinary cases were reported this week.



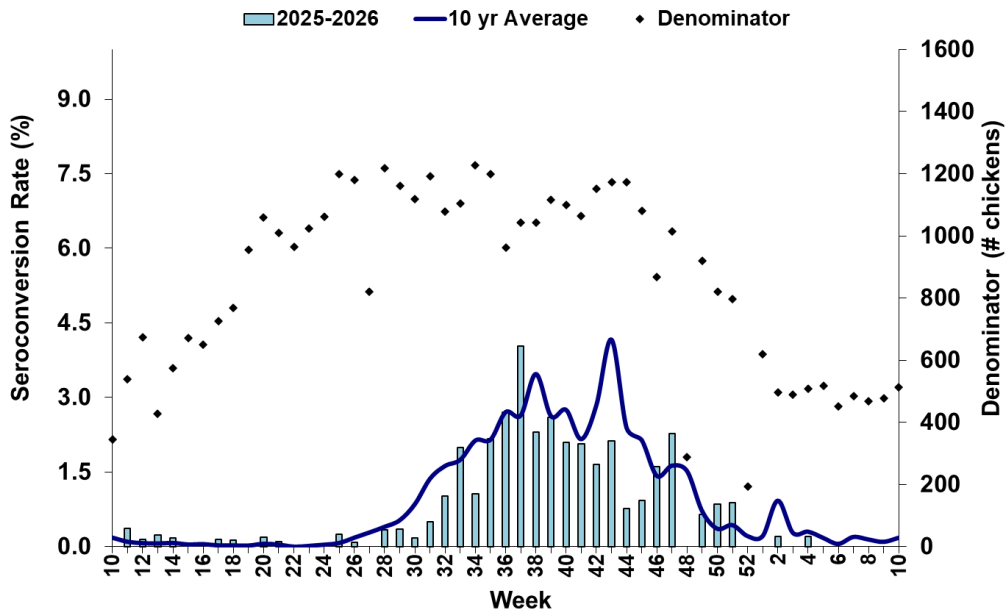
Sentinel Chickens

The table below is for the reporting of confirmatory laboratory results from this week. Some of the samples were collected at earlier dates. The date of collection is recorded for samples collected on that day along with the total number of positives and the corresponding seroconversion rate for the week the sample was collected.

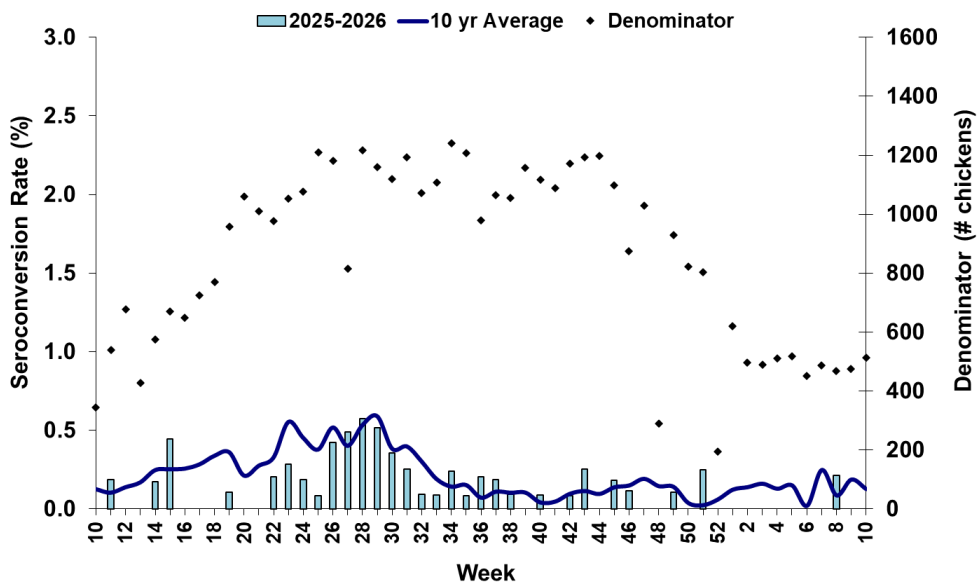
No sentinel chickens tested positive for antibodies to SLEV, WNV, EEEV, or HJV this week.

County	Collection Date	Seroconversion Rates (%)						County Totals	
		Flavi	SLEV	WNV	Alpha	EEEV	HJV	Collection Week	YTD

Sentinel Seroconversions to WNV in Florida, 2025–2026



Sentinel Seroconversions to EEEV in Florida, 2025–2026



Mosquito Pools

No mosquito pools tested positive for EEEV or WNV this week.

County	Collection Date	Result	Species	County YTD
--------	-----------------	--------	---------	------------

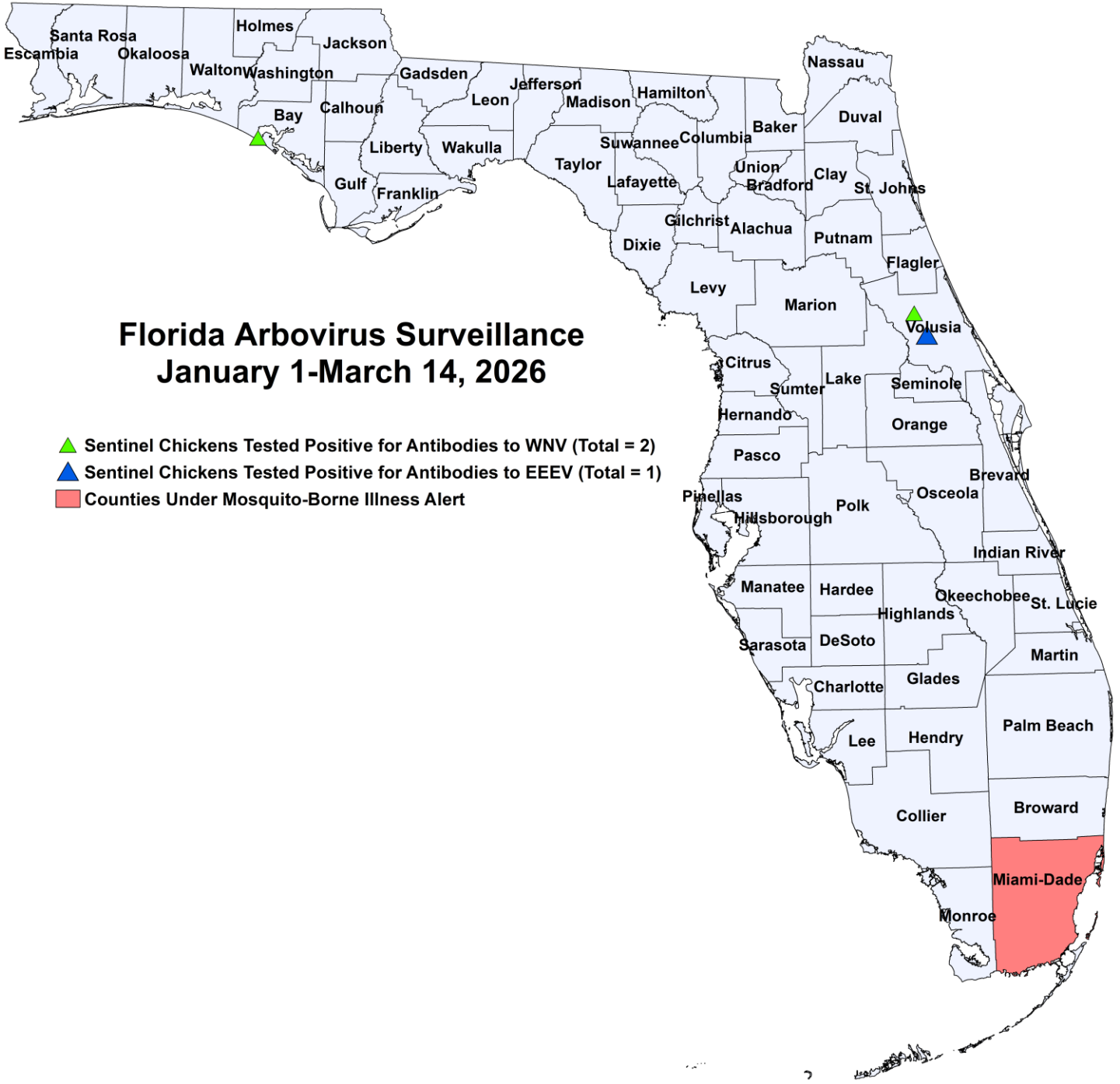
Dead Birds

The Fish and Wildlife Conservation Commission (FWC) collects reports of dead birds, which can be an indication of arbovirus circulation in an area. This week, 22 reports representing a total of 45 dead birds, including three crows and one raptor, were received from 15 counties.

In 2026, 667 reports representing a total of 1568 dead birds (9 crows, 4 jays, 258 raptors, 10 doves) were received from 46 of Florida's 67 counties.

2026

County	Total Dead Birds	Crows	Jays	Raptors	Doves
Alachua	1	0	0	0	0
Bay	1	0	0	0	0
Brevard	2	0	0	0	0
Broward	3	0	0	0	0
Escambia	1	0	0	0	0
Gulf	1	0	0	0	0
Hillsborough	1	0	0	0	0
Lee	1	0	0	0	0
Manatee	2	0	0	0	0
Miami-Dade	1	0	0	0	0
Orange	1	0	0	1	0
Palm Beach	25	2	0	0	0
Pinellas	2	0	0	0	0
Polk	1	0	0	0	0
Volusia	2	1	0	0	0



2026 Mosquito-Borne Disease Activity by County

County	Humans	Equines	Sentinel Chickens	Other
Bay			1 WNV (1/12)	
Volusia			1 EEEV (2/23) 1 WNV (1/26)	

Acknowledgements and Data Sources

Contributors: Andrea Morrison, PhD, MSPH, Rebecca Zimler, PhD, MPH, Olga Ospina, MPH, and Danielle Stanek, DVM, DOH Bureau of Epidemiology; Lea Heberlein, DrPH; Peter Dumoulin, PhD, Maribel Castaneda, Edgar Kopp, MS, Brittany Rowlette, and Amanda Davis, BS; DOH Bureau of Public Health Laboratories.

For more surveillance information, please see the DOH website at: www.floridahealth.gov/diseases-and-conditions/mosquito-borne-diseases/surveillance.html

For arbovirus surveillance information for the United States, please see the Centers for Disease Control and Prevention website at: www.cdc.gov/ncidod/dvbid/westnile/surv&control.htm

Case tallies included in the weekly Florida arbovirus surveillance report include confirmed and probable cases for EEE, WNV infection, SLE, dengue, chikungunya, and malaria by date of onset. Suspect cases are not included. Activity is mapped by county of exposure rather than county of residence. Case definitions being used in Florida are consistent with national criteria provided by the Council of State and Territorial Epidemiologists (CSTE) and may be viewed at: www.floridahealth.gov/diseases-and-conditions/disease-reporting-and-management/disease-reporting-and-surveillance/index.html. Case tallies reported by CDC do not include suspect cases and cases are reported by patient state of residence rather than where the exposure occurred. Data is provided by county health departments, Department of Health Bureau of Public Health Laboratories, Department of Agriculture and Consumer Services, mosquito control agencies, Florida Fish and Wildlife Conservation Commission, medical providers and veterinarians. Equine cases are provided by the Department of Agriculture and Consumer Services.