



Florida Arbovirus Surveillance Week 13: March 29-April 4, 2026

Arbovirus surveillance in Florida includes endemic mosquito-borne viruses such as West Nile virus (WNV), Eastern equine encephalitis virus (EEEV), and St. Louis encephalitis virus (SLEV), as well as exotic viruses such as dengue virus (DENV), chikungunya virus (CHIKV), Zika virus (ZIKV), and California encephalitis group viruses (CEV). Malaria, a parasitic mosquito-borne disease, is also included. During the period of March 29-April 4, 2026, the following arboviral activity was recorded in Florida.

WNV activity: No human cases of WNV infection were reported this week. No horses with WNV infection were reported this week. No sentinel chickens tested positive for antibodies to WNV this week. In 2026, positive samples from six sentinel chickens have been reported from four counties.

SLEV activity: No human cases of SLEV infection were reported this week. No sentinel chickens tested positive for antibodies to SLEV this week. In 2026, no cases of SLEV have been reported.

EEEV activity: No human cases of EEEV infection were reported this week. No horses with EEEV infection were reported. Three sentinel chickens tested positive for antibodies to EEEV this week in Brevard and Volusia counties. In 2026, positive samples from five sentinel chickens have been reported from three counties.

International Travel-Associated Dengue: One case of dengue was reported this week in a person that had international travel. In 2026, 20 travel-associated dengue cases have been reported.

Dengue Cases Acquired in Florida: No cases of locally acquired dengue were reported this week. In 2026, no cases of locally acquired dengue have been reported.

International Travel-Associated Chikungunya Fever Cases: One case of chikungunya fever was reported this week in a person that had international travel. In 2026, 28 cases of travel-associated chikungunya fever have been reported.

Chikungunya Fever Cases Acquired in Florida: No cases of locally acquired chikungunya fever were reported this week. In 2026, no cases of locally acquired chikungunya fever have been reported.

International Travel-Associated Oropouche Fever cases: No cases of Oropouche fever were reported this week. In 2026, no cases of travel-associated Oropouche fever have been reported.

International Travel-Associated Zika Fever Cases: No cases of Zika fever were reported this week in persons that had international travel. In 2026, no travel-associated Zika fever cases have been reported.

Zika Fever Cases Acquired in Florida: No cases of locally acquired Zika fever were reported this week. In 2026, no cases of locally acquired Zika fever have been reported.

Advisories/Alerts: Miami-Dade County is currently under a mosquito-borne illness alert.

There are currently multiple travel health notices from the Centers for Disease Control and Prevention related to mosquito-borne diseases.

| Dengue | | | Oropouche | Yellow Fever | Chikungunya | | | Malaria |
|------------------------|----------|------------------------------|-----------|--------------|-------------|----------|------------------------------|----------|
| Africa and Middle East | Americas | Asia and the Pacific Islands | Americas | Americas | Africa | Americas | Asia and the Pacific Islands | Africa |
| Mali | Bolivia | Afghanistan | Brazil | Colombia | Seychelles | Bolivia | Mayotte | Ethiopia |
| Mauritania | Colombia | Bangladesh | Cuba | Venezuela | | Cuba | | |
| Sudan | Cuba | Cook Islands, NZ | Panama | | | Suriname | | |
| | Guyana | Maldives | Peru | | | | | |
| | | New Caledonia | | | | | | |
| | | Pakistan | | | | | | |
| | | Samoa | | | | | | |
| | | Timor-Leste | | | | | | |
| | | Vietnam | | | | | | |

Level 1 Travel Health Notice, Level 2 Travel Health Alert: wwwnc.cdc.gov/travel/notices.

For a map of arboviral disease activity in the United States visit: <https://www.cdc.gov/fight-the-bite/at-risk/index.html>.

2026 Human Case Summary

2026 International Travel-Associated Chikungunya Cases: Twenty-eight cases with onset in 2026 have been reported in individuals with travel history to a chikungunya-endemic area in the two weeks prior to onset. Counties reporting cases were: Alachua, Hernando, Hillsborough (3), Miami-Dade (16), Monroe (2), Orange (2), and Palm Beach (3). Country of origin was: Cuba (28).

2026 International Travel-Associated Dengue Cases: Twenty cases with onset in 2026 have been reported in individuals with travel to a dengue-endemic area in the two weeks prior to onset. Counties reporting cases were: Broward (4), Hillsborough, Lake, Miami-Dade (4), Orange, Osceola, Palm Beach (3), Polk, Sarasota, St. Johns, and St. Lucie (2). One case was reported in a non-Florida resident. In 2026, 17 cases of dengue reported in Florida have been serotyped by PCR. Please see the table below for a breakdown of cases by country of origin and serotype.

| Country of Exposure | DENV-2 | DENV-3 | DENV-2/ DENV 3 | DENV-4 | Unknown | Total |
|---------------------|----------|----------|-------------------|----------|----------|-----------|
| Brazil | 1 | | | | | 1 |
| Colombia | | | | | 1 | 1 |
| Cuba | 2 | 1 | 1 | 1 | 1 | 6 |
| Guyana | 1 | | | | 1 | 2 |
| India | 1 | 1 | | | | 2 |
| Indonesia | 1 | | | | | 1 |
| Italy | 1 | | | | | 1 |
| Mexico | | 1 | | | | 1 |
| Nicaragua | | 2 | | | | 2 |
| Puerto Rico | | 3 | | | | 3 |
| Total | 7 | 8 | 1 | 1 | 3 | 20 |

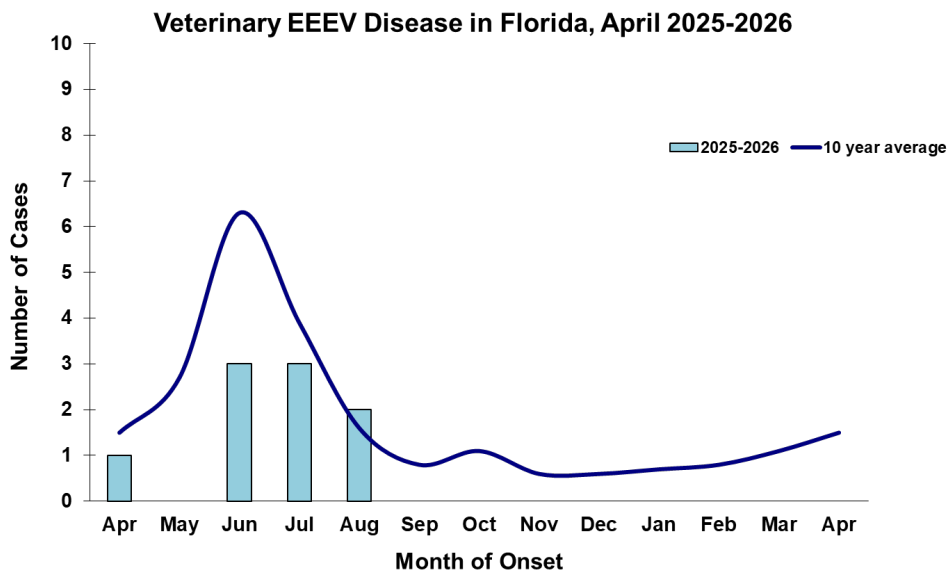
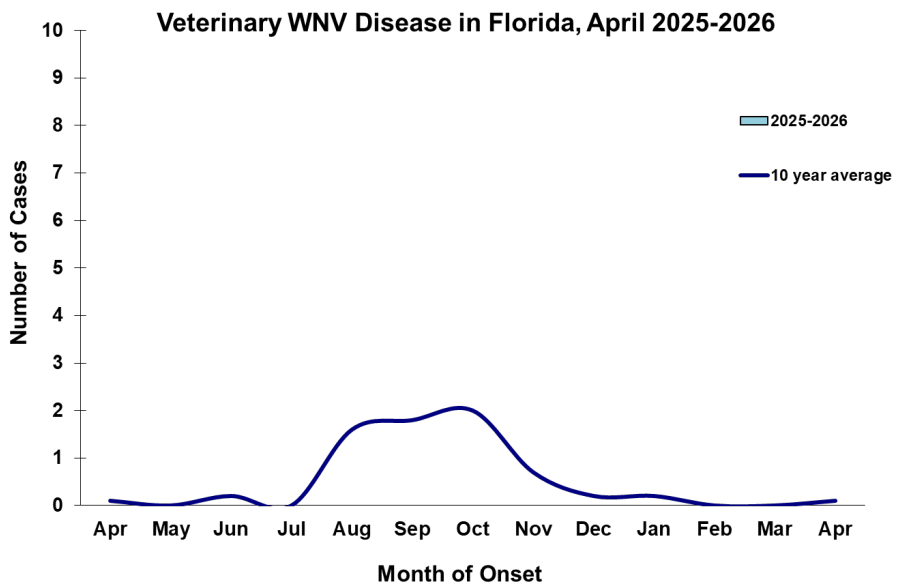
2026 International Travel-Associated Malaria Cases: Ten cases with onset in 2026 have been reported in individuals with travel history to a malaria-endemic area. Counties reporting cases were: Broward, Duval (2), Hernando, Hillsborough, Miami-Dade (3), Orange, and Washington. Please see the table below for a breakdown of cases by country of origin and *Plasmodium* species.

| Country of Exposure | <i>Plasmodium falciparum</i> | <i>Plasmodium ovale</i> | <i>Plasmodium vivax</i> | Total |
|---------------------|------------------------------|-------------------------|-------------------------|-----------|
| Cameroon | 1 | | | 1 |
| Gabon | 1 | | | 1 |
| India | | | 1 | 1 |
| Kenya | 1 | | | 1 |
| Libya | 1 | | | 1 |
| Nigeria | 3 | | | 3 |
| Sudan | 1 | | | 1 |
| Uganda | | 1 | | 1 |
| Total | 8 | 1 | 1 | 10 |

Veterinary Cases**

**Veterinary cases are reported by date of onset. Only mammalian veterinary cases are included in the graphs.

No veterinary cases were reported this week.



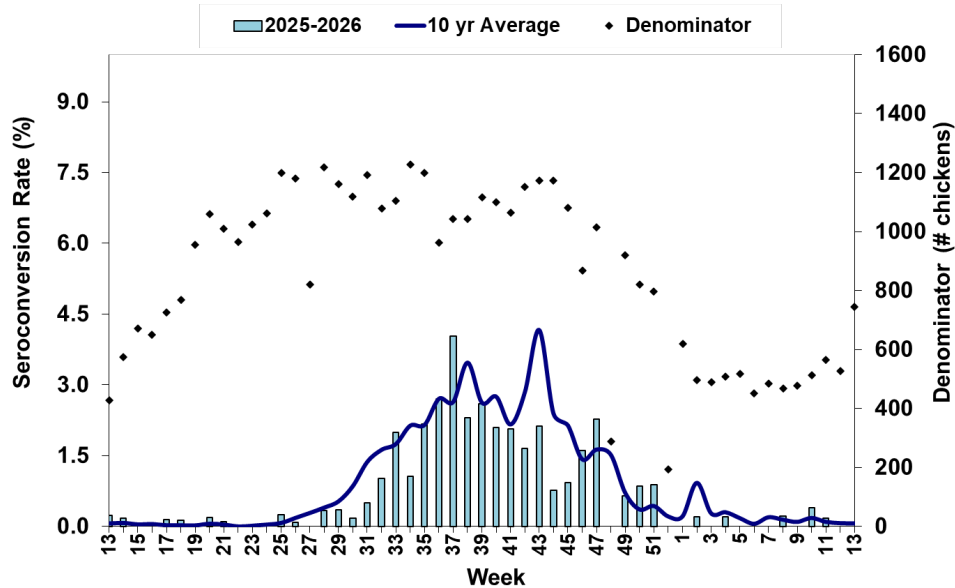
Sentinel Chickens

The table below is for the reporting of confirmatory laboratory results from this week. Some of the samples were collected at earlier dates. The date of collection is recorded for samples collected on that day along with the total number of positives and the corresponding seroconversion rate for the week the sample was collected.

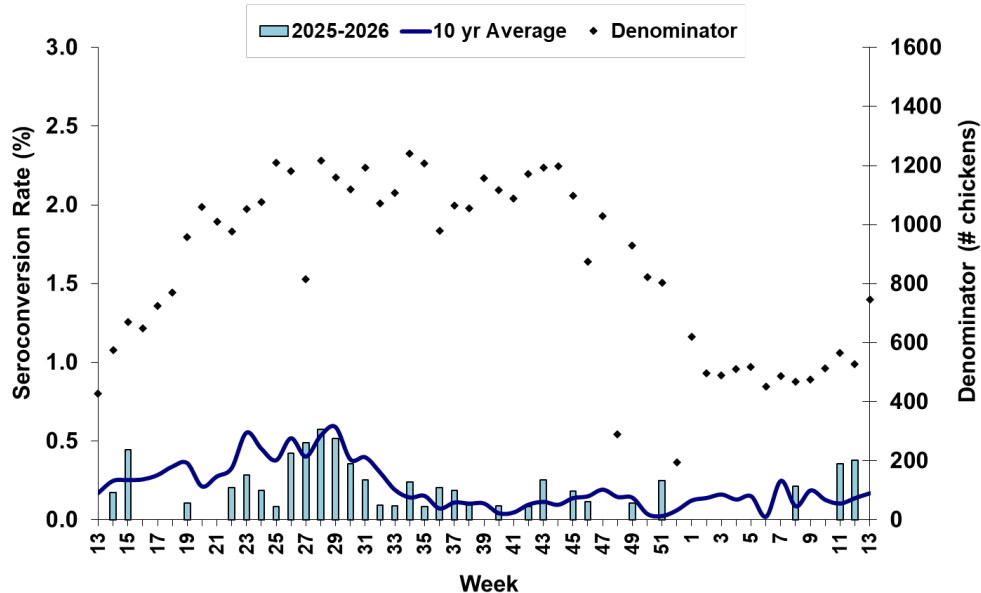
Three sentinel chickens tested positive for antibodies to EEEV this week in Brevard and Volusia counties.

| County | Collection Date | Seroconversion Rates (%) | | | | | | County Totals | |
|---------|-----------------|--------------------------|------|-----|-------|------|-----|-----------------|---------------|
| | | Flavi | SLEV | WNV | Alpha | EEEV | HJV | Collection Week | YTD |
| Brevard | 3/19/2026 | | | | 1.39 | 1.39 | | 1 EEEV | 1 EEEV |
| Volusia | 3/23/2026 | | | | 4.35 | 4.35 | | 2 EEEV | 3 EEEV, 2 WNV |

Sentinel Seroconversions to WNV in Florida, 2025–2026



Sentinel Seroconversions to EEEV in Florida, 2025–2026



Mosquito Pools

No mosquito pools tested positive for EEEV or WNV this week.

| County | Collection Date | Result | Species | County YTD |
|--------|-----------------|--------|---------|------------|
| | | | | |
| | | | | |

Dead Birds

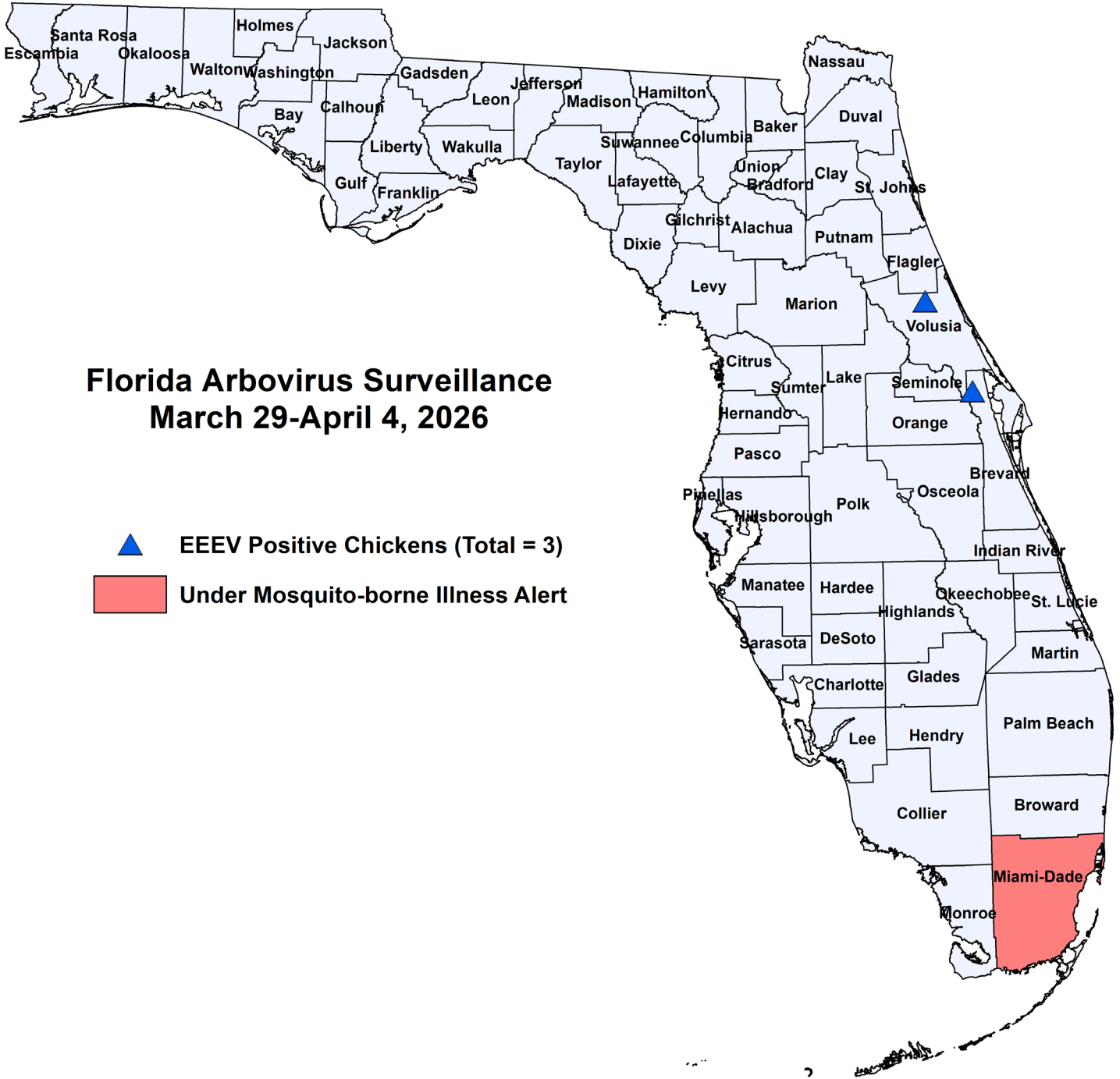
The Fish and Wildlife Conservation Commission (FWC) collects reports of dead birds, which can be an indication of arbovirus circulation in an area. This week, 29 reports representing a total of 47 dead birds, including six crows, five raptors, and seven doves received from 17 counties.

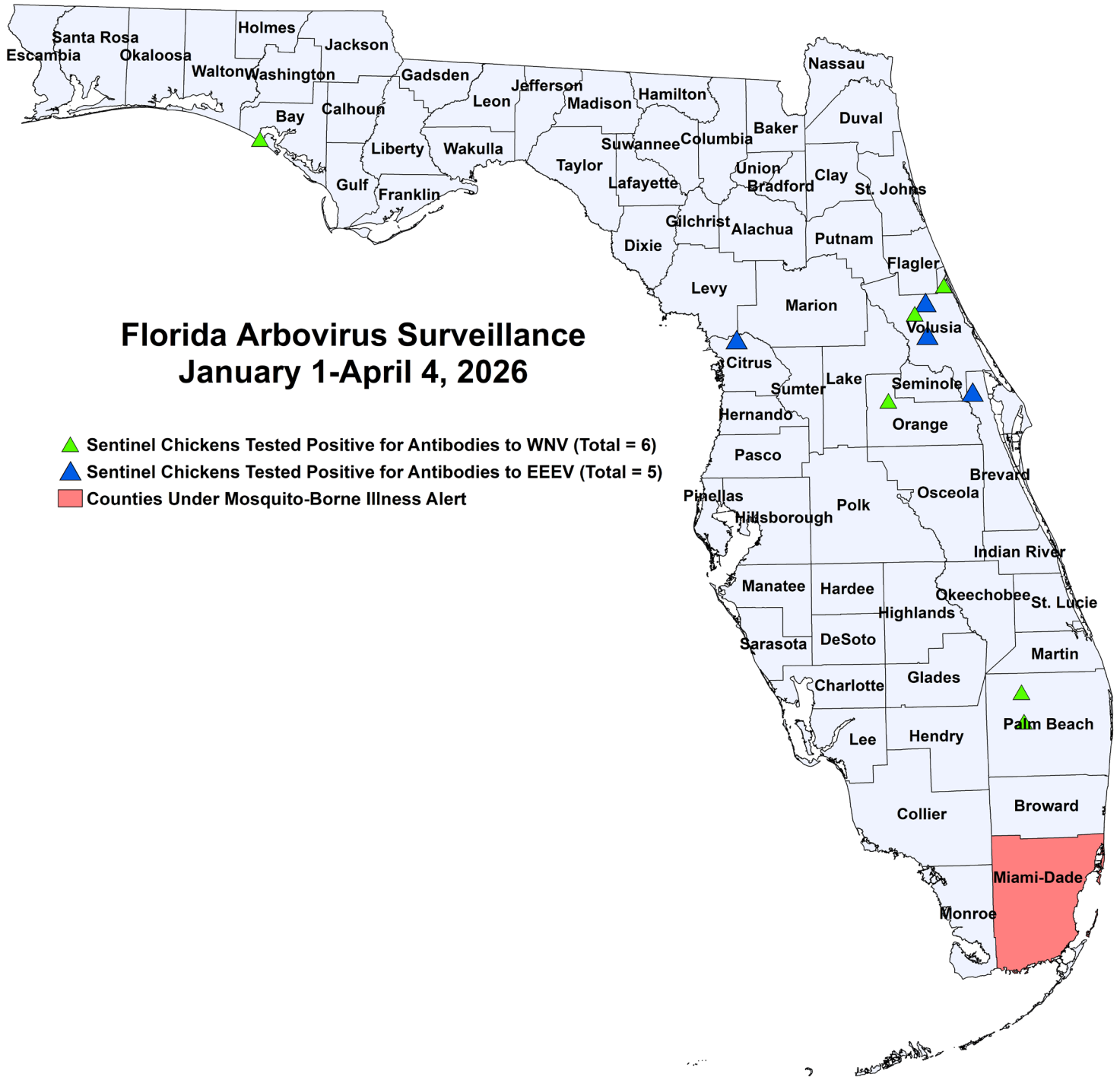
In 2026, 742 reports representing a total of 1692 dead birds (16 crows, 4 jays, 269 raptors, 18 doves) were received from 46 of Florida's 67 counties.

2026

| County | Total Dead Birds | Crows | Jays | Raptors | Doves |
|--------------|------------------|-------|------|---------|-------|
| Bay | 1 | 0 | 0 | 0 | 0 |
| Brevard | 7 | 0 | 0 | 0 | 0 |
| Broward | 9 | 0 | 0 | 0 | 6 |
| Charlotte | 1 | 0 | 0 | 0 | 0 |
| Columbia | 1 | 0 | 0 | 0 | 0 |
| Escambia | 2 | 0 | 0 | 0 | 1 |
| Indian River | 1 | 0 | 0 | 0 | 0 |
| Lee | 3 | 0 | 0 | 3 | 0 |
| Leon | 1 | 0 | 0 | 0 | 0 |
| Marion | 4 | 4 | 0 | 0 | 0 |
| Martin | 1 | 0 | 0 | 0 | 0 |
| Orange | 3 | 1 | 0 | 1 | 0 |
| Pasco | 8 | 0 | 0 | 0 | 0 |
| Pinellas | 2 | 1 | 0 | 0 | 0 |
| Polk | 1 | 0 | 0 | 1 | 0 |
| St. Johns | 1 | 0 | 0 | 0 | 0 |
| Volusia | 1 | 0 | 0 | 0 | 0 |

Maps





Florida Arbovirus Surveillance January 1-April 4, 2026

- ▲ Sentinel Chickens Tested Positive for Antibodies to WNV (Total = 6)
- ▲ Sentinel Chickens Tested Positive for Antibodies to EEEV (Total = 5)
- Counties Under Mosquito-Borne Illness Alert

2026 Mosquito-Borne Disease Activity by County

| County | Humans | Equines | Sentinel Chickens | Other |
|---------|--------|---------|-------------------|-------|
| Bay | | | 1 WNV (1/12) | |
| Brevard | | | 1 EEEV (3/19) | |
| Citrus | | | 1 EEEV (3/17) | |
| Orange | | | 1 WNV (2/23) | |

| | | | | |
|-------------------|--|--|---|--|
| Palm Beach | | | 2 WNV (3/9) | |
| Volusia | | | 3 EEEV (2/23), (3/23) 2 WNV (1/26), (3/16) | |

Acknowledgements and Data Sources

Contributors: Andrea Morrison, PhD, MSPH, Rebecca Zimler, PhD, MPH, Olga Ospina, MPH, and Danielle Stanek, DVM, DOH Bureau of Epidemiology; Lea Heberlein, DrPH; Peter Dumoulin, PhD, Maribel Castaneda, Edgar Kopp, MS, Brittany Rowlette, and Amanda Davis, BS; DOH Bureau of Public Health Laboratories.

For more surveillance information, please see the DOH website at: www.floridahealth.gov/diseases-and-conditions/mosquito-borne-diseases/surveillance.html

For arbovirus surveillance information for the United States, please see the Centers for Disease Control and Prevention website at: www.cdc.gov/ncidod/dvbid/westnile/surv&control.htm

Case tallies included in the weekly Florida arbovirus surveillance report include confirmed and probable cases for EEE, WNV infection, SLE, dengue, chikungunya, and malaria by date of onset. Suspect cases are not included. Activity is mapped by county of exposure rather than county of residence. Case definitions being used in Florida are consistent with national criteria provided by the Council of State and Territorial Epidemiologists (CSTE) and may be viewed at: www.floridahealth.gov/diseases-and-conditions/disease-reporting-and-management/disease-reporting-and-surveillance/index.html. Case tallies reported by CDC do not include suspect cases and cases are reported by patient state of residence rather than where the exposure occurred. Data is provided by county health departments, Department of Health Bureau of Public Health Laboratories, Department of Agriculture and Consumer Services, mosquito control agencies, Florida Fish and Wildlife Conservation Commission, medical providers and veterinarians. Equine cases are provided by the Department of Agriculture and Consumer Services.