



Florida Arbovirus Surveillance Week 21: May 24-30, 2026

Arbovirus surveillance in Florida includes endemic mosquito-borne viruses such as West Nile virus (WNV), Eastern equine encephalitis virus (EEEV), and St. Louis encephalitis virus (SLEV), as well as exotic viruses such as dengue virus (DENV), chikungunya virus (CHIKV), Zika virus (ZIKV), and California encephalitis group viruses (CEV). Malaria, a parasitic mosquito-borne disease, is also included. During the period of May 24-30, 2026, the following arboviral activity was recorded in Florida.

WNV activity: No human cases of WNV infection were reported this week. No horses with WNV infection were reported this week. No sentinel chickens tested positive for antibodies to WNV this week. In 2026, positive samples from eight sentinel chickens have been reported from six counties.

SLEV activity: No human cases of SLEV infection were reported this week. No sentinel chickens tested positive for antibodies to SLEV this week. In 2026, no cases of SLEV have been reported.

EEEV activity: No human cases of EEEV infection were reported this week. No horses with EEEV infection were reported this week. Two sentinel chickens tested positive for antibodies to EEEV in Brevard and Polk counties. In 2026, positive samples from 14 sentinel chickens and one horse have been reported from eight counties.

International Travel-Associated Dengue: One case of dengue was reported this week. In 2026, 29 travel-associated dengue cases have been reported.

Dengue Cases Acquired in Florida: No cases of locally acquired dengue were reported this week. In 2026, no cases of locally acquired dengue have been reported.

International Travel-Associated Chikungunya Fever Cases: No cases of chikungunya fever were reported this week. In 2026, 34 cases of travel-associated chikungunya fever have been reported.

Chikungunya Fever Cases Acquired in Florida: No cases of locally acquired chikungunya fever were reported this week. In 2026, no cases of locally acquired chikungunya fever have been reported.

International Travel-Associated Oropouche Fever cases: No cases of Oropouche fever were reported this week. In 2026, no cases of travel-associated Oropouche fever have been reported.

International Travel-Associated Zika Fever Cases: No cases of Zika fever were reported this week in persons that had international travel. In 2026, no travel-associated Zika fever cases have been reported.

Zika Fever Cases Acquired in Florida: No cases of locally acquired Zika fever were reported this week. In 2026, no cases of locally acquired Zika fever have been reported.

Advisories/Alerts: Miami-Dade County is currently under a mosquito-borne illness alert.

There are currently multiple travel health notices from the Centers for Disease Control and Prevention related to mosquito-borne diseases.

Dengue			Oropouche	Yellow Fever	Chikungunya			Malaria
Africa and Middle East	Americas	Asia and the Pacific Islands	Americas	Americas	Africa	Americas	Asia and the Pacific Islands	Africa
Mali	Bolivia	Cook Islands, NZ	Brazil	Colombia	Mauritius	Bolivia	Mayotte	Ethiopia
	Colombia	Maldives	Cuba	Venezuela	Seychelles	Suriname		
	Guyana	New Caledonia	Panama					
		Samoa	Peru					
		Timor-Leste						
		Tonga						
		Vietnam						

Level 1 Travel Health Notice, Level 2 Travel Health Alert: wwwnc.cdc.gov/travel/notices.

For a map of arboviral disease activity in the United States visit: <https://www.cdc.gov/fight-the-bite/at-risk/index.html>.

2026 Human Case Summary

2026 International Travel-Associated Chikungunya Cases: Thirty-four cases with onset in 2026 have been reported in individuals with travel history to a chikungunya-endemic area in the two weeks prior to onset. Counties reporting cases were: Alachua, Hernando, Hillsborough (6), Miami-Dade (19), Monroe (2), Orange (2), and Palm Beach (3). One case has been reported in a non-Florida resident. Countries of origin were Bolivia, Brazil (2) and Cuba (31).

2026 International Travel-Associated Dengue Cases: Twenty-nine cases with onset in 2026 have been reported in individuals with travel to a dengue-endemic area in the two weeks prior to onset. Counties reporting cases were: Broward (6), Hillsborough, Lake, Lee, Miami-Dade (9), Orange (2), Osceola, Palm Beach (3), Polk, Sarasota, St. Johns, and St. Lucie (2). Two cases were reported in non-Florida residents. In 2026, 25 cases of dengue reported in Florida have been serotyped by PCR. Please see the table below for a breakdown of cases by country of origin and serotype.

Country of Exposure	DENV-1	DENV-2	DENV-3	DENV-4	DENV-2/ DENV 3	Unknown	Total
Brazil		1					1
Colombia	1		1	1		1	4
Cuba		3	1	1	1	2	8
Dominican Republic		1					1
Guyana		2				1	3
India		1	1				2
Indonesia		1					1
Mexico			1				1
Nicaragua	1		4				5
Puerto Rico			3				3
Total	2	9	11	2	1	4	29

2026 International Travel-Associated Malaria Cases: Fifteen cases with onset in 2026 have been reported in individuals with travel history to a malaria-endemic area. Counties reporting cases were: Broward (2), Duval (2), Hernando, Hillsborough (2), Miami-Dade (4), Orange, Pinellas, Seminole, and Washington. One case was reported in a non-Florida resident. Please see the table below for a breakdown of cases by country of origin and *Plasmodium* species.

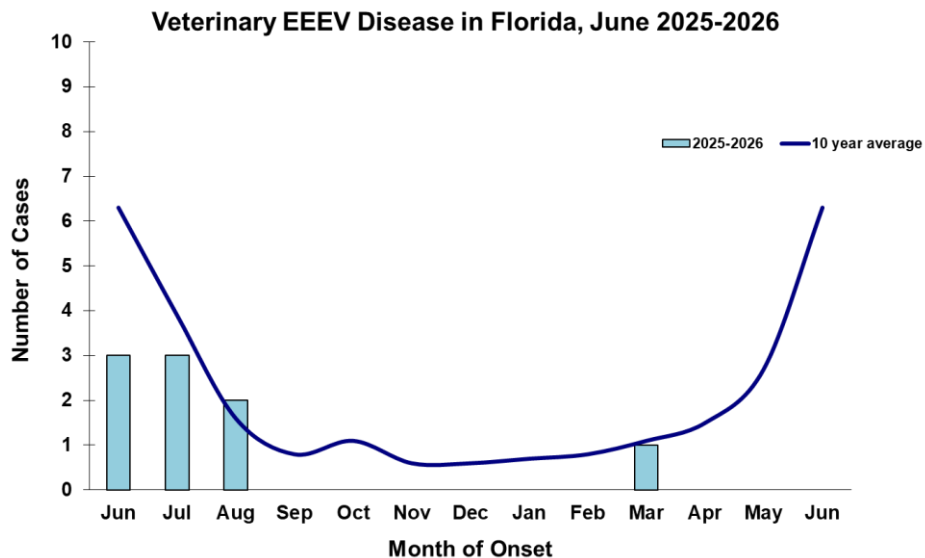
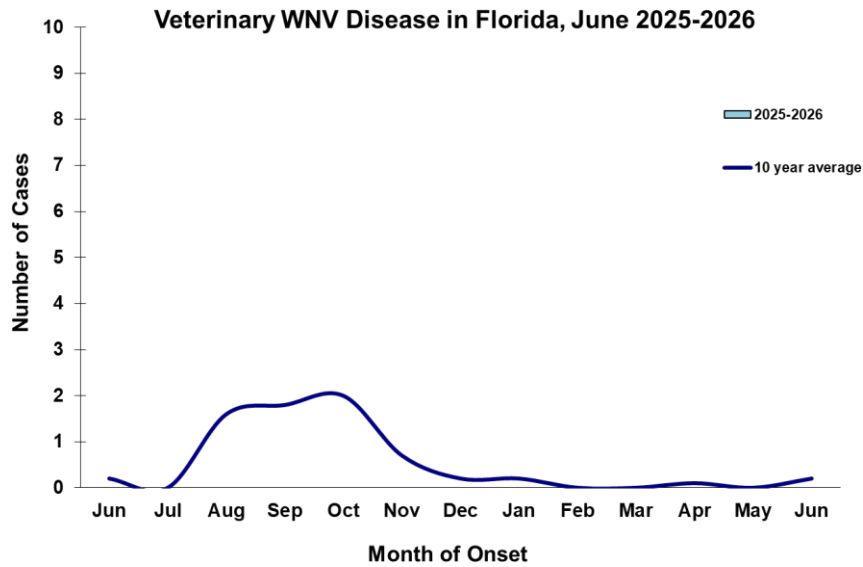
Country of Exposure	<i>Plasmodium falciparum</i>	<i>Plasmodium ovale</i>	<i>Plasmodium vivax</i>	Total
Cameroon	1	1		2
Gabon	1			1

Country of Exposure	<i>Plasmodium falciparum</i>	<i>Plasmodium ovale</i>	<i>Plasmodium vivax</i>	Total
Ghana	1			1
India			1	1
Kenya	1			1
Liberia	1			1
Malawi	1			1
Nigeria	4			4
Papua New Guinea			1	1
Sudan	1			1
Uganda		1		1
Total	11	2	2	15

Veterinary Cases**

**Veterinary cases are reported by date of onset. Only mammalian veterinary cases are included in the graphs.

No veterinary cases were reported this week.



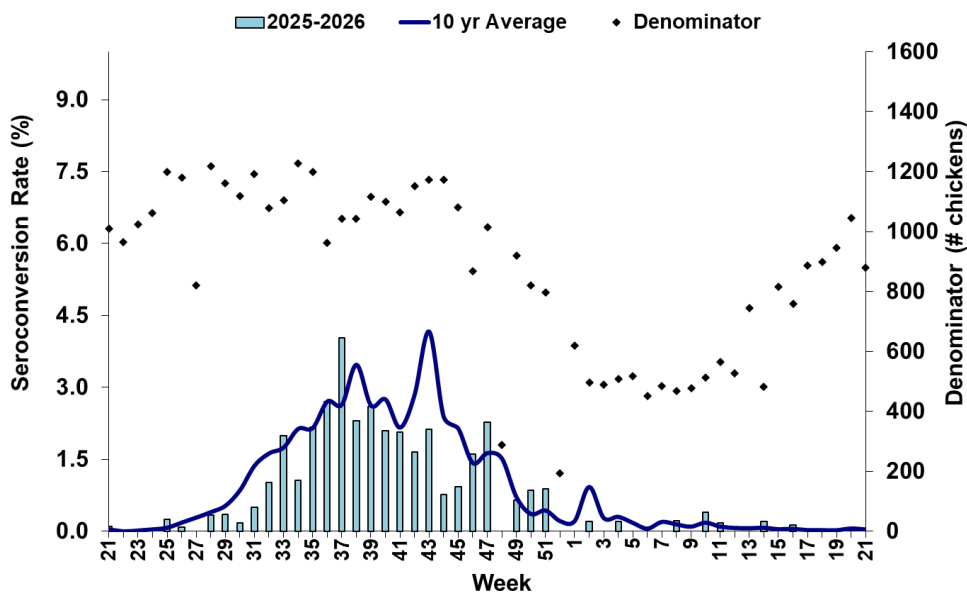
Sentinel Chickens

The table below is for the reporting of confirmatory laboratory results from this week. Some of the samples were collected at earlier dates. The date of collection is recorded for samples collected on that day along with the total number of positives and the corresponding seroconversion rate for the week the sample was collected.

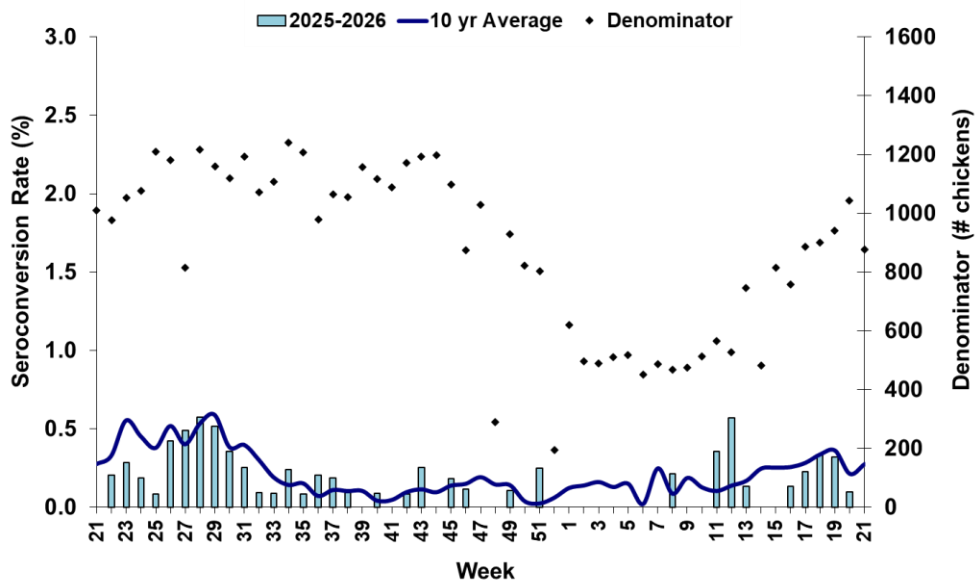
Two sentinel chickens tested positive for antibodies to EEEV in Brevard and Polk counties.

County	Collection Date	Seroconversion Rates (%)						County Totals	
		Flavi	SLEV	WNV	Alpha	EEEV	HJV	Collection Week	YTD
Brevard	5/14/2026				1.43	9.09		1 EEEV	2 EEEV
Polk	5/18/2026				2.08	2.08		1 EEEV	1 EEEV

Sentinel Seroconversions to WNV in Florida, 2025–2026



Sentinel Seroconversions to EEEV in Florida, 2025–2026



Mosquito Pools

No mosquito pools tested positive for EEEV or WNV this week.

County	Collection Date	Result	Species	County YTD
--------	-----------------	--------	---------	------------

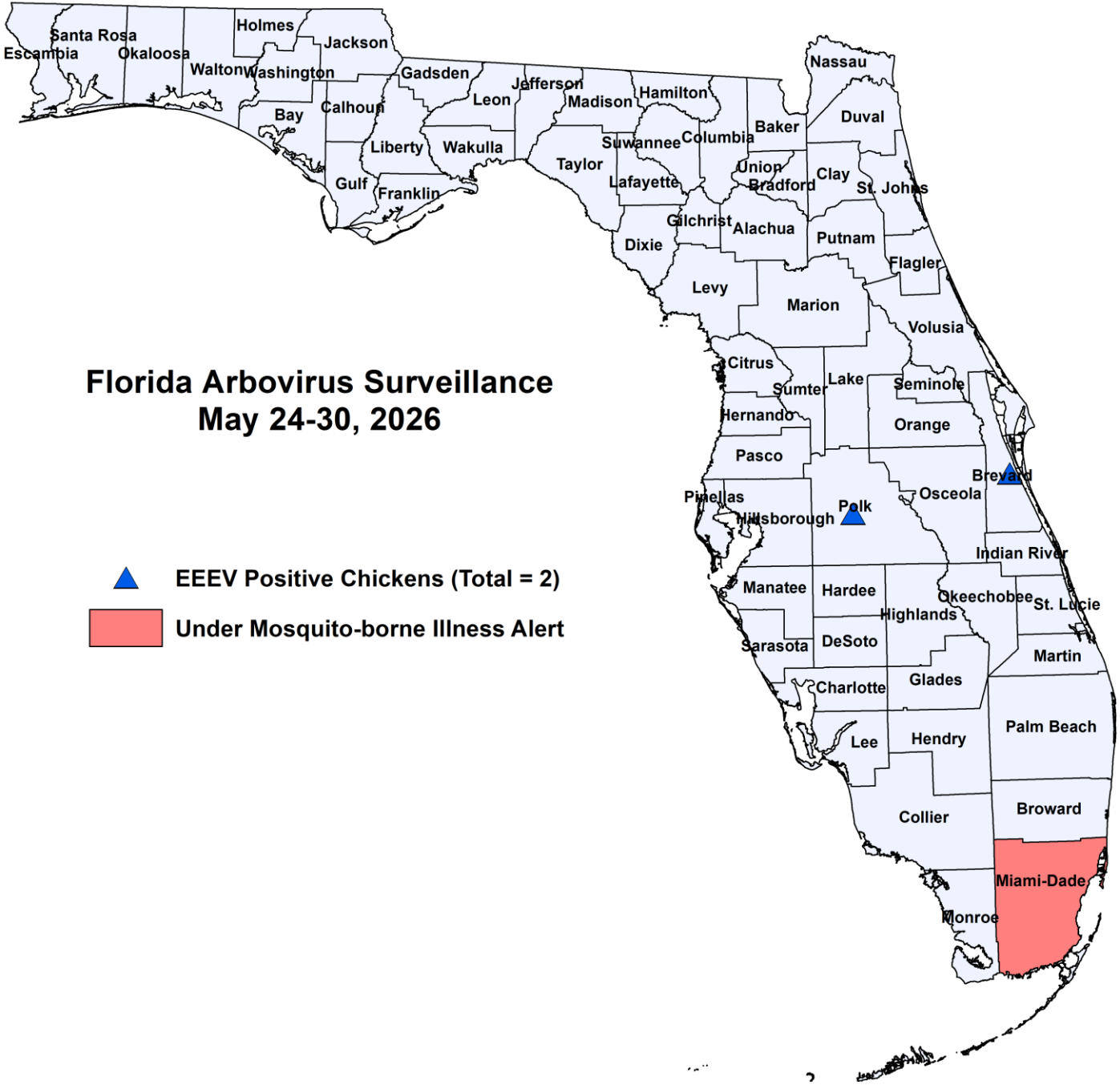
Dead Birds

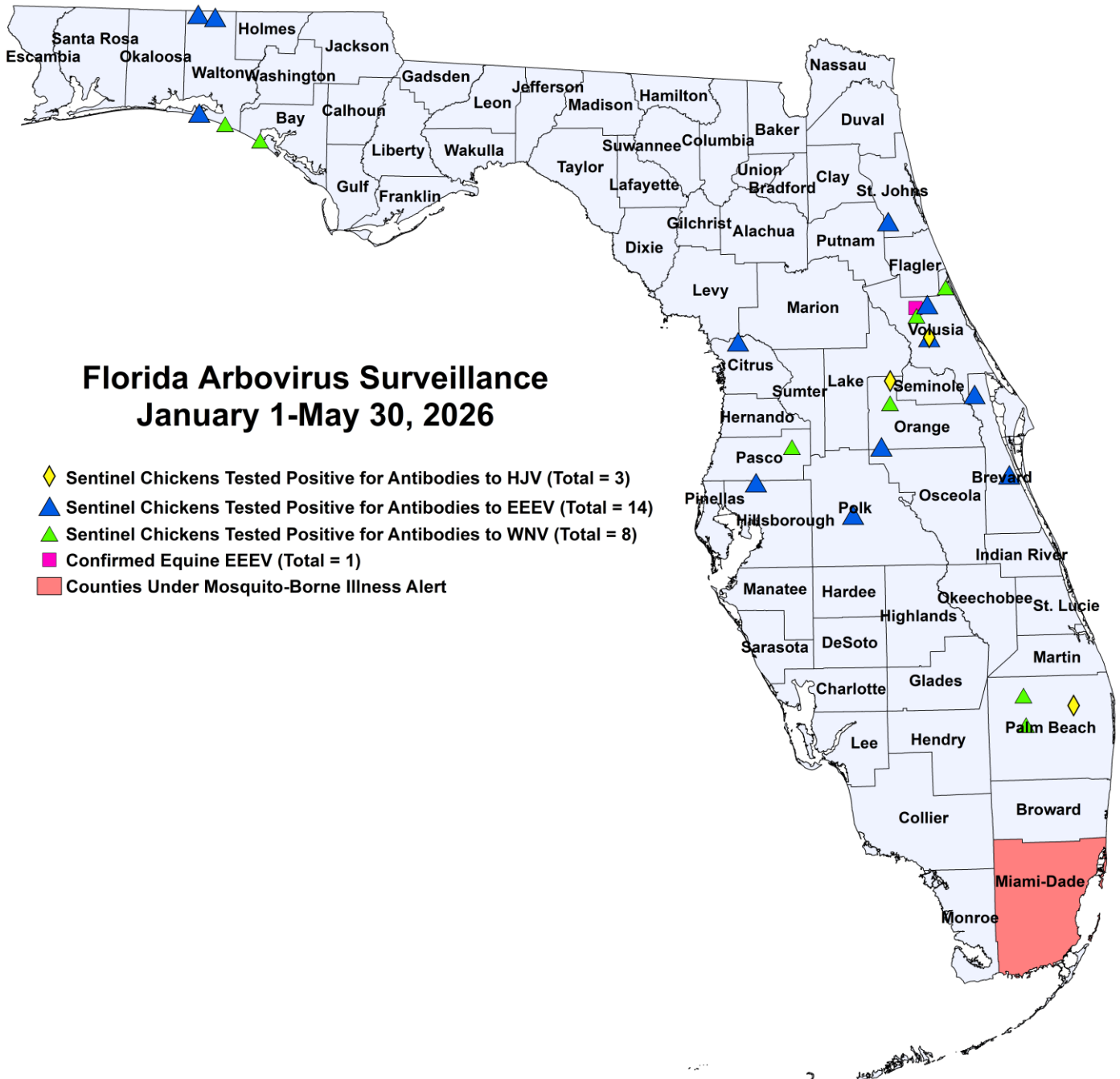
The Fish and Wildlife Conservation Commission (FWC) collects reports of dead birds, which can be an indication of arbovirus circulation in an area. This week, 25 reports representing a total of 63 dead birds, including three crows, three raptors, and seven doves were received from 12 counties.

In 2026, 979 reports representing a total of 2251 dead birds (28 crows, 14 jays, 304 raptors, 37 doves) were received from 49 of Florida's 67 counties.

2026

County	Total Dead Birds	Crows	Jays	Raptors	Doves
Brevard	14	1	0	0	7
Broward	2	2	0	0	0
Charlotte	3	0	0	0	0
Clay	1	0	0	0	0
Escambia	4	0	0	1	0
Lee	3	0	0	1	0
Manatee	1	0	0	0	0
Palm Beach	6	0	0	0	0
Pinellas	3	0	0	0	0
Sarasota	1	0	0	0	0
Seminole	1	0	0	0	0
St. Johns	24	0	0	1	0





2026 Mosquito-Borne Disease Activity by County

County	Humans	Equines	Sentinel Chickens	Other
Bay			1 WNV (1/12)	
Brevard			2 EEEV (3/19, 5/14)	
Citrus			1 EEEV (3/17)	
Hillsborough			1 EEEV (5/11)	
Orange			2 EEEV (4/21, 5/12) 1 HJV (5/4) 1 WNV (2/23)	
Palm Beach			1 HJV (3/23) 2 WNV (3/9)	
Pasco			1 WNV (4/20)	

County	Humans	Equines	Sentinel Chickens	Other
Polk			1 EEEV (5/18)	
St. Johns			1 EEEV (4/27)	
Volusia		1 EEEV (3/14)	3 EEEV (2/23, 3/23) 1 HJV (3/30) 2 WNV (1/26, 3/16)	
Walton			3 EEEV (4/27, 5/4) 1 WNV (4/6)	

Acknowledgements and Data Sources

Contributors: Andrea Morrison, PhD, MSPH, Rebecca Zimler, PhD, MPH, Olga Ospina, MPH, and Danielle Stanek, DVM, DOH Bureau of Epidemiology; Lea Heberlein, DrPH; Peter Dumoulin, PhD, Maribel Castaneda, Edgar Kopp, MS, Brittany Rowlette, and Amanda Davis, BS; DOH Bureau of Public Health Laboratories.

For more surveillance information, please see the DOH website at: www.floridahealth.gov/diseases-and-conditions/mosquito-borne-diseases/surveillance.html

For arbovirus surveillance information for the United States, please see the Centers for Disease Control and Prevention website at: www.cdc.gov/ncidod/dvbid/westnile/surv&control.htm

Case tallies included in the weekly Florida arbovirus surveillance report include confirmed and probable cases for EEE, WNV infection, SLE, dengue, chikungunya, and malaria by date of onset. Suspect cases are not included. Activity is mapped by county of exposure rather than county of residence. Case definitions being used in Florida are consistent with national criteria provided by the Council of State and Territorial Epidemiologists (CSTE) and may be viewed at: www.floridahealth.gov/diseases-and-conditions/disease-reporting-and-management/disease-reporting-and-surveillance/index.html. Case tallies reported by CDC do not include suspect cases and cases are reported by patient state of residence rather than where the exposure occurred. Data is provided by county health departments, Department of Health Bureau of Public Health Laboratories, Department of Agriculture and Consumer Services, mosquito control agencies, Florida Fish and Wildlife Conservation Commission, medical providers and veterinarians. Equine cases are provided by the Department of Agriculture and Consumer Services.