



## Florida Arbovirus Surveillance Week 23: June 7-13, 2026

Arbovirus surveillance in Florida includes endemic mosquito-borne viruses such as West Nile virus (WNV), Eastern equine encephalitis virus (EEEV), and St. Louis encephalitis virus (SLEV), as well as exotic viruses such as dengue virus (DENV), chikungunya virus (CHIKV), Zika virus (ZIKV), and California encephalitis group viruses (CEV). Malaria, a parasitic mosquito-borne disease, is also included. During the period of June 7-13, 2026, the following arboviral activity was recorded in Florida.

**WNV activity:** No human cases of WNV infection were reported this week. No horses with WNV infection were reported this week. No sentinel chickens tested positive for antibodies to WNV this week. In 2026, positive samples from eight sentinel chickens have been reported from six counties.

**SLEV activity:** No human cases of SLEV infection were reported this week. No sentinel chickens tested positive for antibodies to SLEV this week. In 2026, no cases of SLEV have been reported.

**EEEV activity:** No human cases of EEEV infection were reported this week. No horses with EEEV infection were reported this week. Two sentinel chickens tested positive for antibodies to EEEV in Orange and St. Johns counties. In 2026, positive samples from 17 sentinel chickens and one horse have been reported from eight counties.

**International Travel-Associated Dengue:** Three cases of dengue were reported this week. In 2026, 32 travel-associated dengue cases have been reported.

**Dengue Cases Acquired in Florida:** No cases of locally acquired dengue were reported this week. In 2026, no cases of locally acquired dengue have been reported.

**International Travel-Associated Chikungunya Fever Cases:** One case of chikungunya fever was reported this week. In 2026, 35 cases of travel-associated chikungunya fever have been reported.

**Chikungunya Fever Cases Acquired in Florida:** No cases of locally acquired chikungunya fever were reported this week. In 2026, no cases of locally acquired chikungunya fever have been reported.

**International Travel-Associated Oropouche Fever cases:** No cases of Oropouche fever were reported this week. In 2026, no cases of travel-associated Oropouche fever have been reported.

**International Travel-Associated Zika Fever Cases:** No cases of Zika fever were reported this week in persons that had international travel. In 2026, no travel-associated Zika fever cases have been reported.

**Zika Fever Cases Acquired in Florida:** No cases of locally acquired Zika fever were reported this week. In 2026, no cases of locally acquired Zika fever have been reported.

**Advisories/Alerts:** Miami-Dade County is currently under a mosquito-borne illness alert.

There are currently multiple travel health notices from the Centers for Disease Control and Prevention related to mosquito-borne diseases.

Dengue			Oropouche	Yellow Fever	Chikungunya		Malaria
Africa and Middle East	Americas	Asia and the Pacific Islands	Americas	Americas	Africa	Americas	Africa and Middle East
Mali	Bolivia	Cook Islands, NZ	Brazil	Colombia	Mauritius	Bolivia	Ethiopia
	Colombia	Maldives	Cuba	Venezuela	Mayotte	French Guiana	Mayotte
	Guyana	New Caledonia	Panama		Seychelles	Suriname	Yemen
		Samoa	Peru				
		Timor-Leste					
		Tonga					
		Vietnam					

Level 1 Travel Health Notice, Level 2 Travel Health Alert: [wwwnc.cdc.gov/travel/notices](http://wwwnc.cdc.gov/travel/notices).

For a map of arboviral disease activity in the United States visit: <https://www.cdc.gov/fight-the-bite/at-risk/index.html>.

### 2026 Human Case Summary

**2026 International Travel-Associated Chikungunya Cases:** Thirty-five cases with onset in 2026 have been reported in individuals with travel history to a chikungunya-endemic area in the two weeks prior to onset. Counties reporting cases were: Alachua, Hernando, Hillsborough (7), Miami-Dade (19), Monroe (2), Orange (2), and Palm Beach (3). Countries of origin were Bolivia (2), Brazil (2) and Cuba (31).

**2026 International Travel-Associated Dengue Cases:** Thirty-two cases with onset in 2026 have been reported in individuals with travel to a dengue-endemic area in the two weeks prior to onset. Counties reporting cases were: Broward (6), Hillsborough (2), Lake, Lee, Miami-Dade (11), Orange (2), Osceola, Palm Beach (3), Polk, Sarasota, St. Johns, and St. Lucie (2). Two cases were reported in non-Florida residents. In 2026, 28 cases of dengue reported in Florida have been serotyped by PCR. Please see the table below for a breakdown of cases by country of origin and serotype.

Country of Exposure	DENV-1	DENV-2	DENV-3	DENV-4	DENV-2/ DENV 3	Unknown	Total
Brazil		1					1
Colombia	1		2	1		1	5
Cuba		4	1	1	1	2	9
Dominican Republic		1					1
Guyana		2				1	3
India		1	1				2
Indonesia		1					1
Mexico			1				1
Nicaragua	1		4				5
Puerto Rico			4				4
<b>Total</b>	<b>2</b>	<b>10</b>	<b>13</b>	<b>2</b>	<b>1</b>	<b>4</b>	<b>32</b>

**2026 International Travel-Associated Malaria Cases:** Seventeen cases with onset in 2026 have been reported in individuals with travel history to a malaria-endemic area. Counties reporting cases were: Broward (3), Duval (2), Hernando, Hillsborough (2), Leon, Miami-Dade (4), Orange, Pinellas, Seminole, and Washington. One case was reported in a non-Florida resident. Please see the table below for a breakdown of cases by country of origin and *Plasmodium* species.

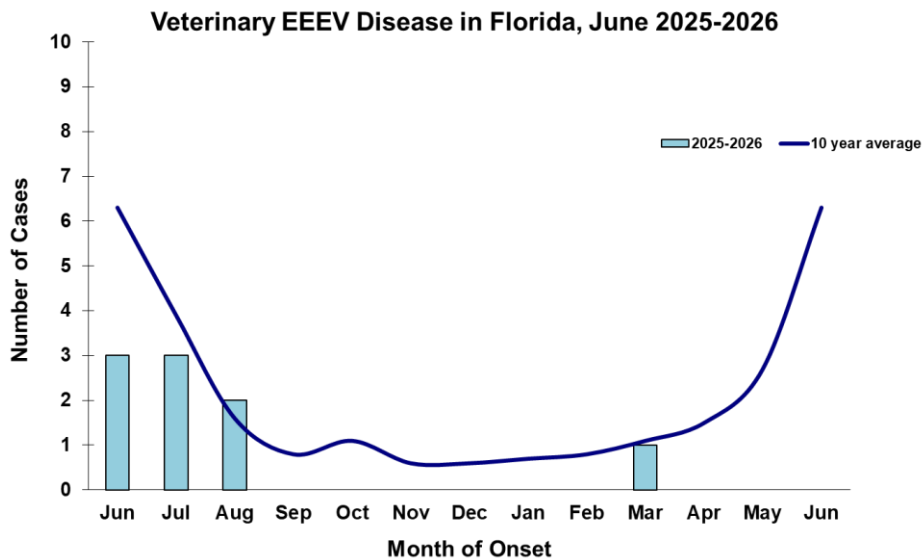
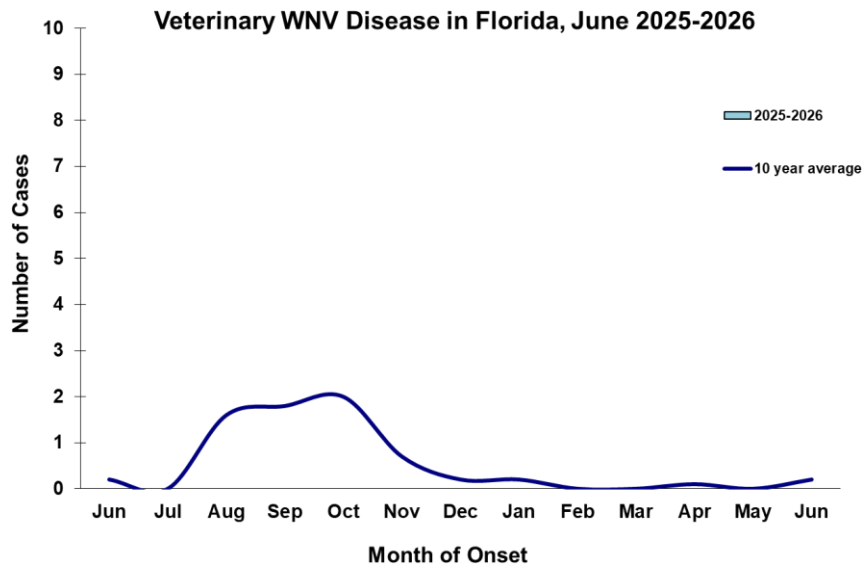
Country of Exposure	<i>Plasmodium falciparum</i>	<i>Plasmodium ovale</i>	<i>Plasmodium vivax</i>	Total
Cameroon	1	1		2
Gabon	1			1
Ghana	1			1
India			1	1
Kenya	2			2

Country of Exposure	<i>Plasmodium falciparum</i>	<i>Plasmodium ovale</i>	<i>Plasmodium vivax</i>	Total
Liberia	1			1
Malawi	1			1
Nigeria	4			4
Papua New Guinea			1	1
Sudan	1			1
Uganda	1	1		2
<b>Total</b>	<b>13</b>	<b>2</b>	<b>2</b>	<b>17</b>

### Veterinary Cases\*\*

\*\*Veterinary cases are reported by date of onset. Only mammalian veterinary cases are included in the graphs.

No veterinary cases were reported this week.



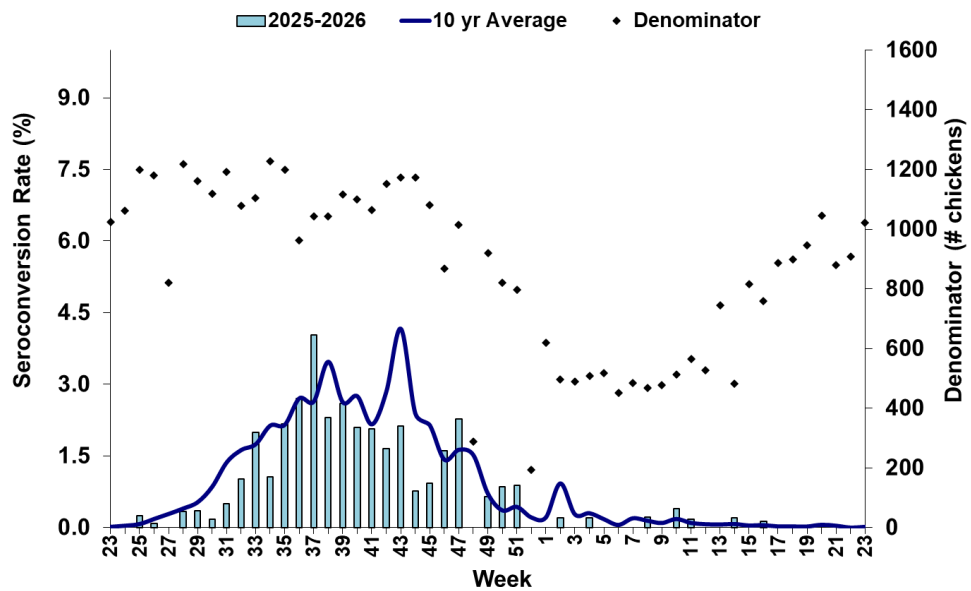
## Sentinel Chickens

The table below is for the reporting of confirmatory laboratory results from this week. Some of the samples were collected at earlier dates. The date of collection is recorded for samples collected on that day along with the total number of positives and the corresponding seroconversion rate for the week the sample was collected.

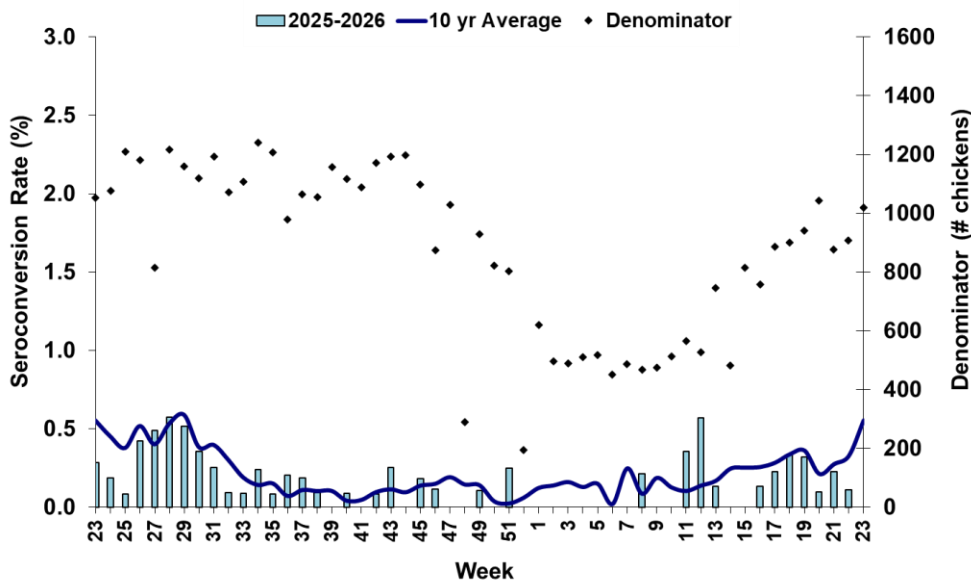
Two sentinel chickens tested positive for antibodies to EEEV in Orange and St. Johns counties.

County	Collection Date	Seroconversion Rates (%)						County Totals	
		Flavi	SLEV	WNV	Alpha	EEEV	HJV	Collection Week	YTD
Orange	6/2/2026				0.84	0.84		1 EEEV	3 EEEV, 1 HJV, 1 WNV
St. Johns	5/26/2026				1.72	1.72		1 EEEV	2 EEEV

**Sentinel Seroconversions to WNV in Florida, 2025–2026**



**Sentinel Seroconversions to EEEV in Florida, 2025–2026**



## Mosquito Pools

No mosquito pools tested positive for EEEV or WNV this week.

County	Collection Date	Result	Species	County YTD
-	-	-	-	-

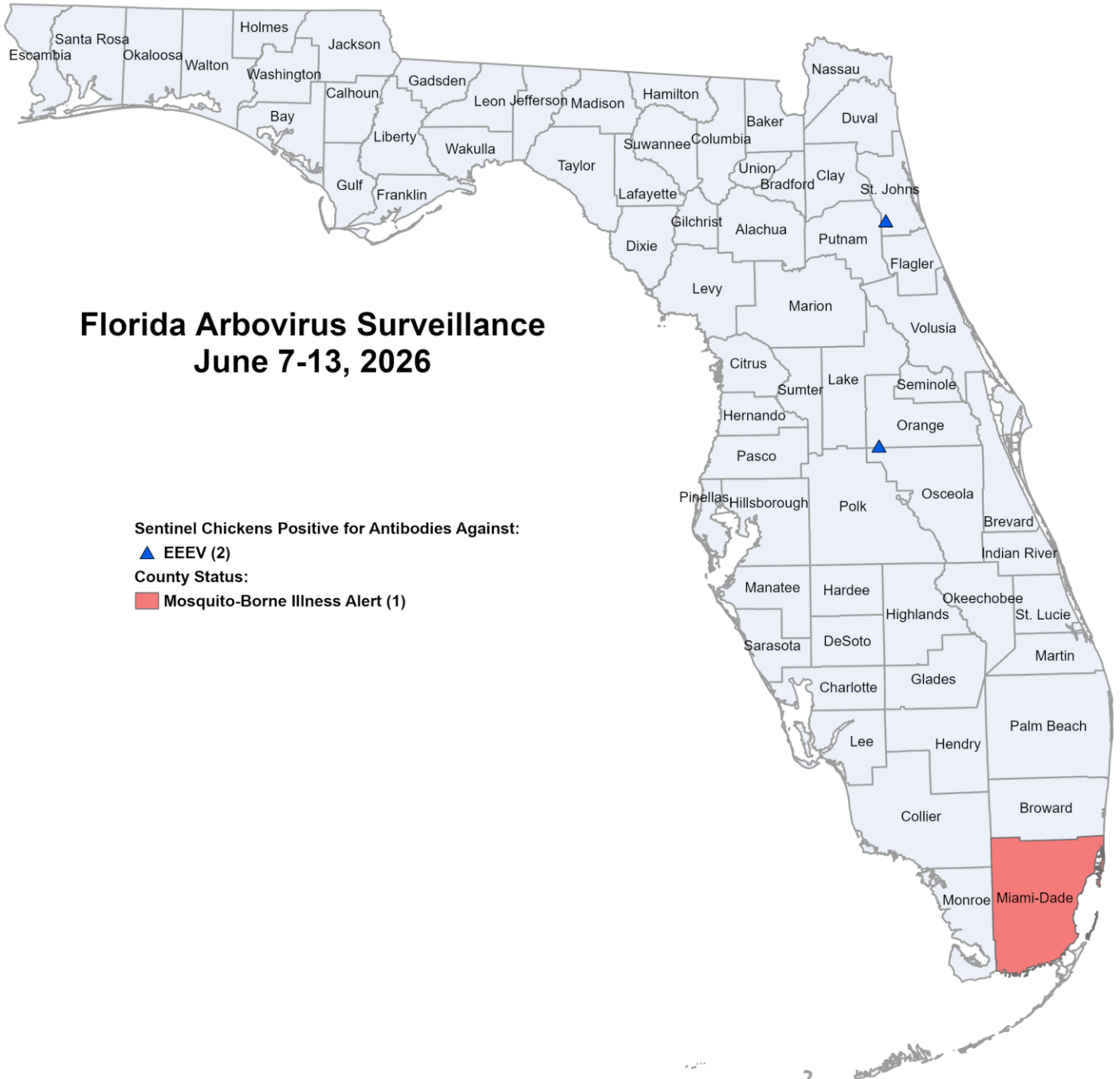
## Dead Birds

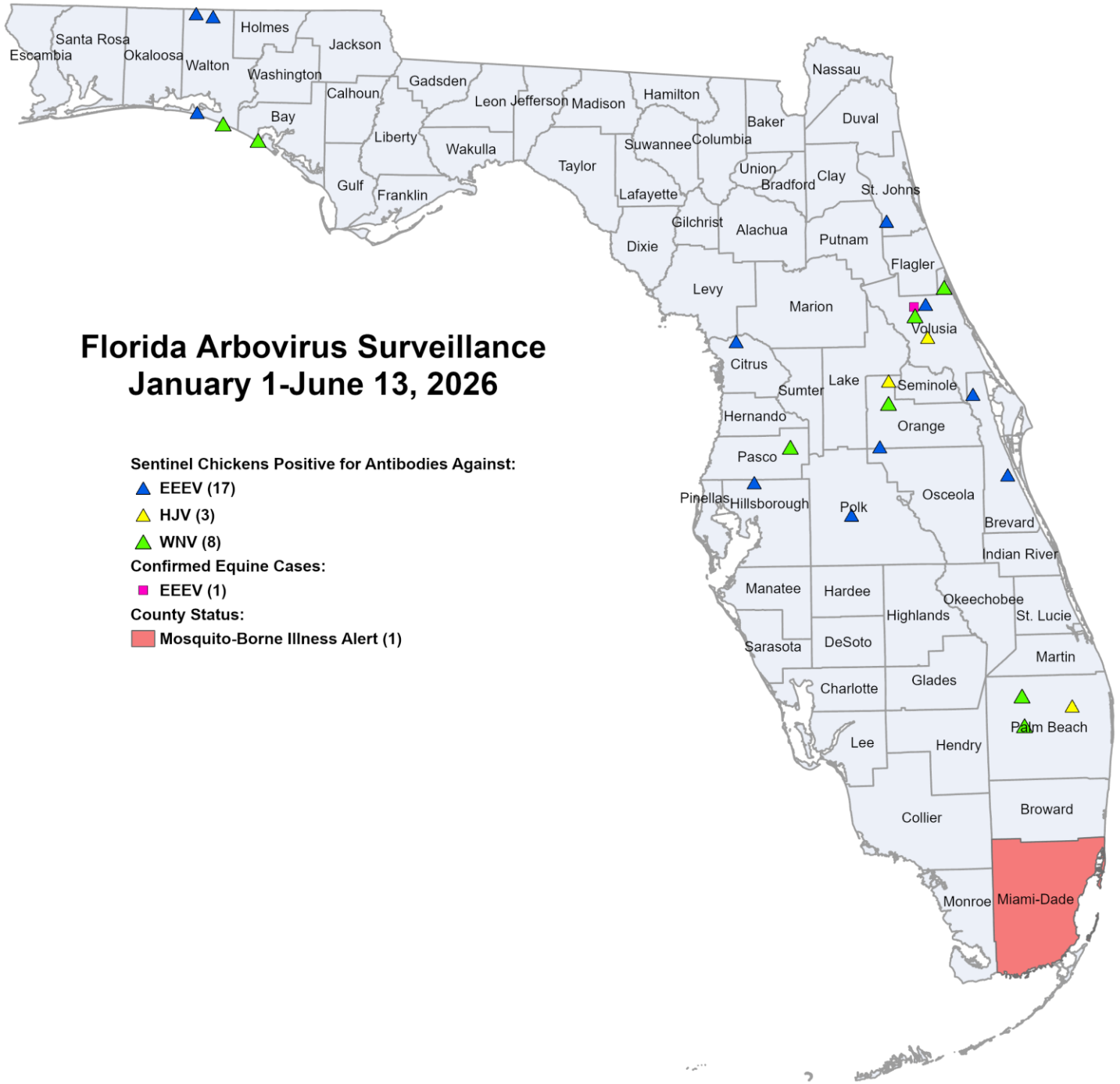
The Fish and Wildlife Conservation Commission (FWC) collects reports of dead birds, which can be an indication of arbovirus circulation in an area. This week, 38 reports representing a total of 63 dead birds, including one crow, one jay, seven raptors, and 14 doves were received from 19 counties.

In 2026, 1049 reports representing a total of 2363 dead birds (30 crows, 19 jays, 315 raptors, 53 doves) were received from 50 of Florida's 67 counties.

### 2026

County	Total Dead Birds	Crows	Jays	Raptors	Doves
Alachua	1	0	0	0	0
Bay	3	0	0	0	0
Brevard	16	0	0	0	14
Broward	1	0	0	0	0
Charlotte	2	0	0	1	0
Hernando	1	1	0	0	0
Lee	5	0	0	0	0
Miami-Dade	1	0	0	0	0
Orange	3	0	0	1	0
Osceola	2	0	0	1	0
Palm Beach	10	0	0	1	0
Pasco	1	0	0	0	0
Pinellas	6	0	0	2	0
Polk	2	0	0	0	0
Sarasota	2	0	1	1	0
St. Johns	3	0	0	0	0
St. Lucie	1	0	0	0	0
Volusia	2	0	0	0	0
Walton	1	0	0	0	0





**2026 Mosquito-Borne Disease Activity by County**

County	Humans	Equines	Sentinel Chickens	Other
Bay			1 WNV (1/12)	
Brevard			2 EEEV (3/19, 5/14)	
Citrus			1 EEEV (3/17)	
Hillsborough			1 EEEV (5/11)	
Orange			3 EEEV (4/21, 5/12, 6/2) 1 HJV (5/4) 1 WNV (2/23)	
Palm Beach			1 HJV (3/23) 2 WNV (3/9)	

County	Humans	Equines	Sentinel Chickens	Other
Pasco			1 WNV (4/20)	
Polk			1 EEEV (5/18)	
St. Johns			2 EEEV (4/27, 5/26)	
Volusia		1 EEEV (3/14)	3 EEEV (2/23, 3/23) 1 HJV (3/30) 2 WNV (1/26, 3/16)	
Walton			4 EEEV (4/27, 5/4, 5/26) 1 WNV (4/6)	

### Acknowledgements and Data Sources

Contributors: Andrea Morrison, PhD, MSPH, Rebecca Zimler, PhD, MPH, Olga Ospina, MPH, and Danielle Stanek, DVM, DOH Bureau of Epidemiology; Lea Heberlein, DrPH; Peter Dumoulin, PhD, Maribel Castaneda, Edgar Kopp, MS, Brittany Rowlette, and Amanda Davis, BS; DOH Bureau of Public Health Laboratories.

**For more surveillance information, please see the DOH website at:** [www.floridahealth.gov/diseases-and-conditions/mosquito-borne-diseases/surveillance.html](http://www.floridahealth.gov/diseases-and-conditions/mosquito-borne-diseases/surveillance.html)

**For arbovirus surveillance information for the United States, please see the Centers for Disease Control and Prevention website at:** [www.cdc.gov/ncidod/dvbid/westnile/surv&control.htm](http://www.cdc.gov/ncidod/dvbid/westnile/surv&control.htm)

Case tallies included in the weekly Florida arbovirus surveillance report include confirmed and probable cases for EEE, WNV infection, SLE, dengue, chikungunya, and malaria by date of onset. Suspect cases are not included. Activity is mapped by county of exposure rather than county of residence. Case definitions being used in Florida are consistent with national criteria provided by the Council of State and Territorial Epidemiologists (CSTE) and may be viewed at: [www.floridahealth.gov/diseases-and-conditions/disease-reporting-and-management/disease-reporting-and-surveillance/index.html](http://www.floridahealth.gov/diseases-and-conditions/disease-reporting-and-management/disease-reporting-and-surveillance/index.html). Case tallies reported by CDC do not include suspect cases and cases are reported by patient state of residence rather than where the exposure occurred. Data is provided by county health departments, Department of Health Bureau of Public Health Laboratories, Department of Agriculture and Consumer Services, mosquito control agencies, Florida Fish and Wildlife Conservation Commission, medical providers and veterinarians. Equine cases are provided by the Department of Agriculture and Consumer Services.