



Florida Arbovirus Surveillance Week 24: June 14-20, 2026

Arbovirus surveillance in Florida includes endemic mosquito-borne viruses such as West Nile virus (WNV), Eastern equine encephalitis virus (EEEV), and St. Louis encephalitis virus (SLEV), as well as exotic viruses such as dengue virus (DENV), chikungunya virus (CHIKV), Zika virus (ZIKV), and California encephalitis group viruses (CEV). Malaria, a parasitic mosquito-borne disease, is also included. During the period of June 14-20, 2026, the following arboviral activity was recorded in Florida.

WNV activity: One human case of WNV infection was reported this week in Alachua County. No horses with WNV infection were reported this week. One sentinel chicken tested positive for antibodies to WNV in Pinellas County. In 2026, positive samples from one human and nine sentinel chickens have been reported from eight counties.

SLEV activity: No human cases of SLEV infection were reported this week. No sentinel chickens tested positive for antibodies to SLEV this week. In 2026, no cases of SLEV have been reported.

EEEV activity: No human cases of EEEV infection were reported this week. No horses with EEEV infection were reported this week. No sentinel chickens tested positive for antibodies to EEEV this week. In 2026, positive samples from 17 sentinel chickens and one horse have been reported from eight counties.

International Travel-Associated Dengue: One case of dengue was reported this week. In 2026, 33 travel-associated dengue cases have been reported.

Dengue Cases Acquired in Florida: No cases of locally acquired dengue were reported this week. In 2026, no cases of locally acquired dengue have been reported.

International Travel-Associated Chikungunya Fever Cases: One case of chikungunya fever was reported this week. In 2026, 36 cases of travel-associated chikungunya fever have been reported.

Chikungunya Fever Cases Acquired in Florida: No cases of locally acquired chikungunya fever were reported this week. In 2026, no cases of locally acquired chikungunya fever have been reported.

International Travel-Associated Oropouche Fever cases: No cases of Oropouche fever were reported this week. In 2026, no cases of travel-associated Oropouche fever have been reported.

International Travel-Associated Zika Fever Cases: No cases of Zika fever were reported this week in persons that had international travel. In 2026, no travel-associated Zika fever cases have been reported.

Zika Fever Cases Acquired in Florida: No cases of locally acquired Zika fever were reported this week. In 2026, no cases of locally acquired Zika fever have been reported.

Advisories/Alerts: Alachua County is currently under a mosquito-borne illness advisory. Miami-Dade County is currently under a mosquito-borne illness alert.

There are currently multiple travel health notices from the Centers for Disease Control and Prevention related to mosquito-borne diseases.

Dengue			Oropouche	Yellow Fever	Chikungunya		Malaria
Africa and Middle East	Americas	Asia and the Pacific Islands	Americas	Americas	Africa	Americas	Africa and Middle East
Mali	Bolivia	Cook Islands, NZ	Brazil	Colombia	Mauritius	Bolivia	Ethiopia
	Colombia	Maldives	Cuba	Venezuela	Mayotte	French Guiana	Mayotte
	Guyana	New Caledonia	Panama		Seychelles	Suriname	Yemen
		Samoa	Peru				
		Timor-Leste					
		Tonga					
		Vietnam					

Level 1 Travel Health Notice, Level 2 Travel Health Alert: wwwnc.cdc.gov/travel/notices.

For a map of arboviral disease activity in the United States visit: <https://www.cdc.gov/fight-the-bite/at-risk/index.html>.

2026 Human Case Summary

West Nile Virus Illness Acquired in Florida: In 2026, one human case of WNV illness acquired in Florida has been reported in Alachua County (May).

2026 International Travel-Associated Chikungunya Cases: Thirty-six cases with onset in 2026 have been reported in individuals with travel history to a chikungunya-endemic area in the two weeks prior to onset. Counties reporting cases were: Alachua, Hernando, Hillsborough (7), Miami-Dade (19), Monroe (2), Orange (2), Osceola, and Palm Beach (3). Countries of origin were Bolivia (2), Brazil (2), Cuba (31), and Guyana.

2026 International Travel-Associated Dengue Cases: Thirty-three cases with onset in 2026 have been reported in individuals with travel to a dengue-endemic area in the two weeks prior to onset. Counties reporting cases were: Broward (6), Hillsborough (2), Lake, Lee, Manatee, Miami-Dade (11), Orange (2), Osceola, Palm Beach (3), Polk, Sarasota, St. Johns, and St. Lucie (2). Two cases were reported in non-Florida residents. In 2026, 29 cases of dengue reported in Florida have been serotyped by PCR. Please see the table below for a breakdown of cases by country of origin and serotype.

Country of Exposure	DENV-1	DENV-2	DENV-3	DENV-4	DENV-2/ DENV 3	Unknown	Total
Brazil		1					1
Colombia	1		2	1		1	5
Cuba		4	1	1	1	2	9
Dominican Republic		1					1
Guyana		2				1	3
India		1	1				2
Indonesia		1					1
Mexico			1				1
Nicaragua	1		4				5
Peru			1				1
Puerto Rico			4				4
Total	2	10	14	2	1	4	33

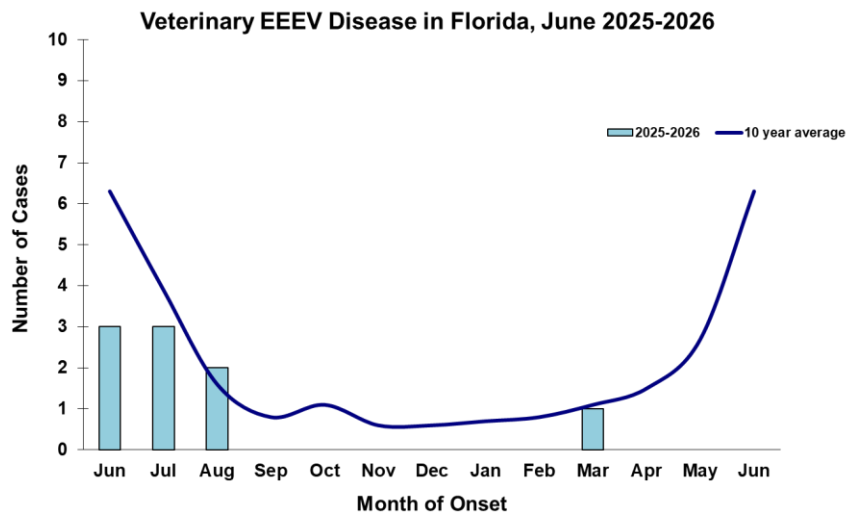
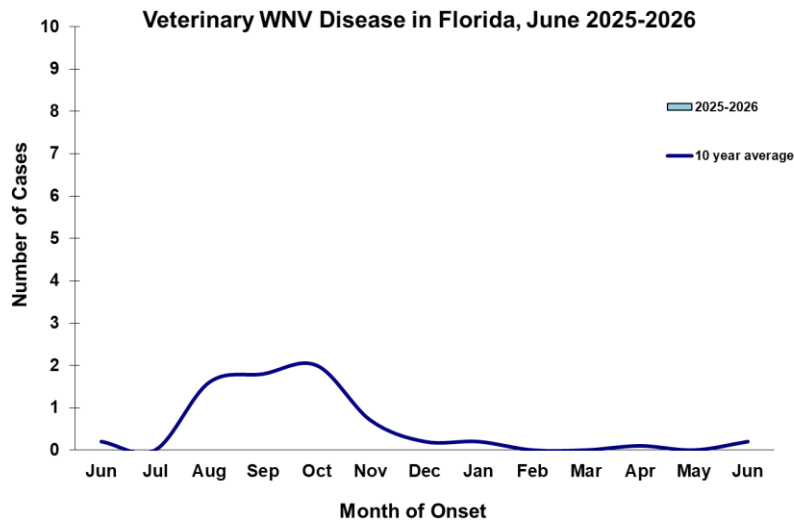
2026 International Travel-Associated Malaria Cases: Seventeen cases with onset in 2026 have been reported in individuals with travel history to a malaria-endemic area. Counties reporting cases were: Broward (3), Duval (2), Hernando, Hillsborough (2), Leon, Miami-Dade (4), Orange, Pinellas, Seminole, and Washington. One case was reported in a non-Florida resident. Please see the table below for a breakdown of cases by country of origin and *Plasmodium* species.

Country of Exposure	<i>Plasmodium falciparum</i>	<i>Plasmodium ovale</i>	<i>Plasmodium vivax</i>	Total
Cameroon	2	1		3
Gabon	1			1
Ghana	1			1
India			1	1
Kenya	2			2
Liberia	1			1
Malawi	1			1
Nigeria	4			4
Papua New Guinea			1	1
Sudan	1			1
Uganda	1	1		2
Total	14	2	2	18

Veterinary Cases**

**Veterinary cases are reported by date of onset. Only mammalian veterinary cases are included in the graphs.

No veterinary cases were reported this week.



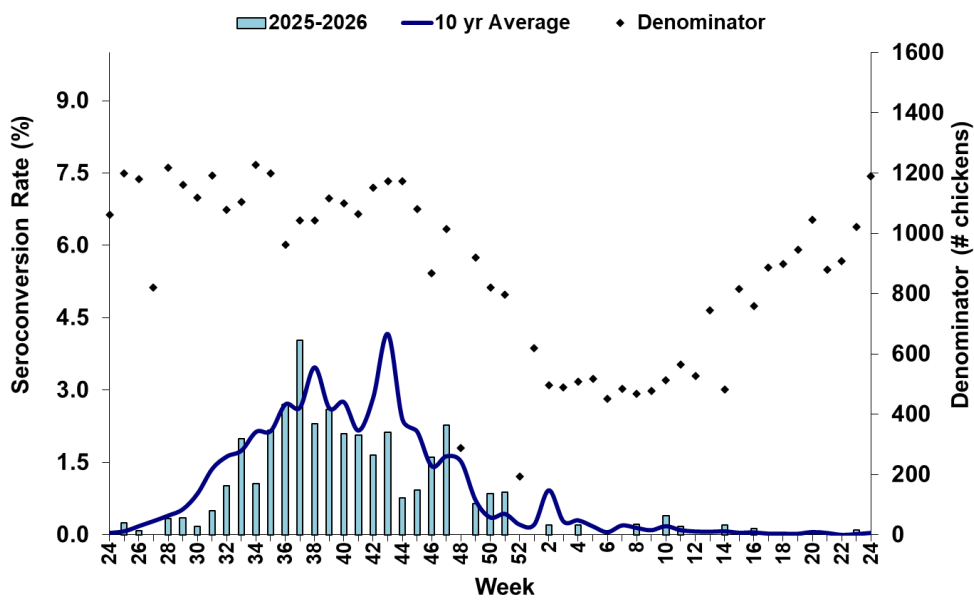
Sentinel Chickens

The table below is for the reporting of confirmatory laboratory results from this week. Some of the samples were collected at earlier dates. The date of collection is recorded for samples collected on that day along with the total number of positives and the corresponding seroconversion rate for the week the sample was collected.

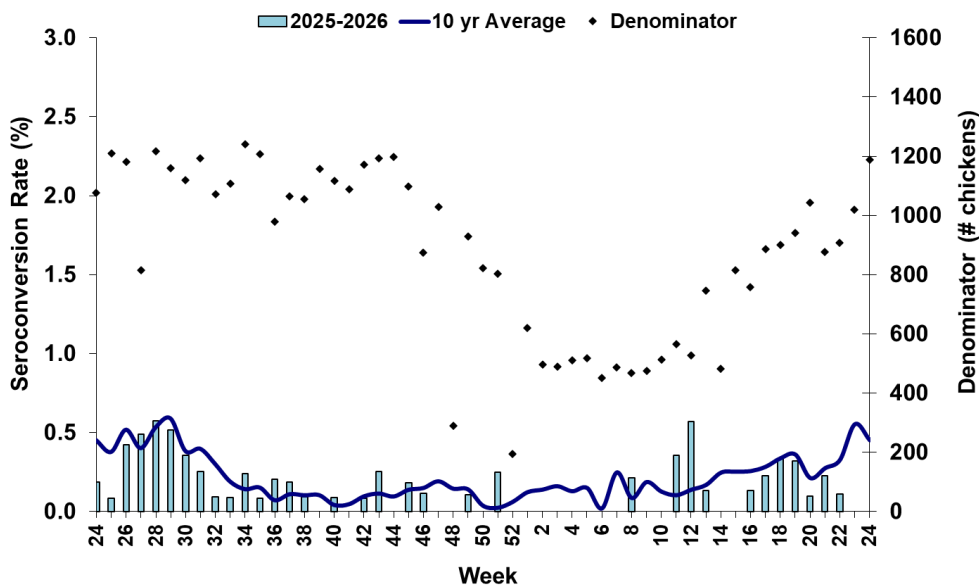
One sentinel chicken tested positive for antibodies to WNV in Pinellas County.

County	Collection Date	Seroconversion Rates (%)						County Totals	
		Flavi	SLEV	WNV	Alpha	EEEV	HJV	Collection Week	YTD
Pinellas	6/8/2026	1.79		1.79				1 WNV	1 WNV

Sentinel Seroconversions to WNV in Florida, 2025–2026



Sentinel Seroconversions to EEEV in Florida, 2025–2026



Mosquito Pools

No mosquito pools tested positive for EEEV or WNV this week.

County	Collection Date	Result	Species	County YTD
-	-	-	-	-

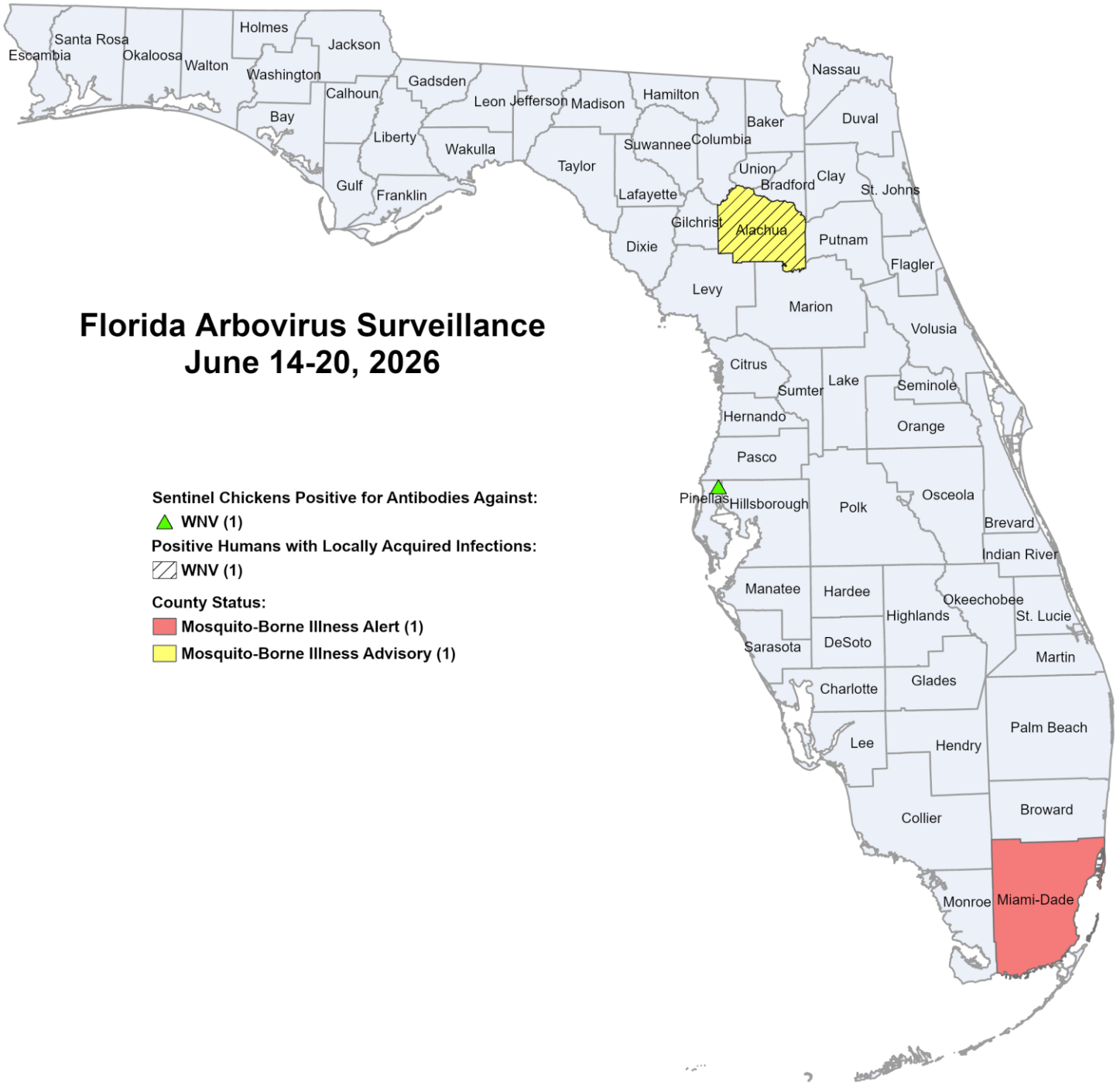
Dead Birds

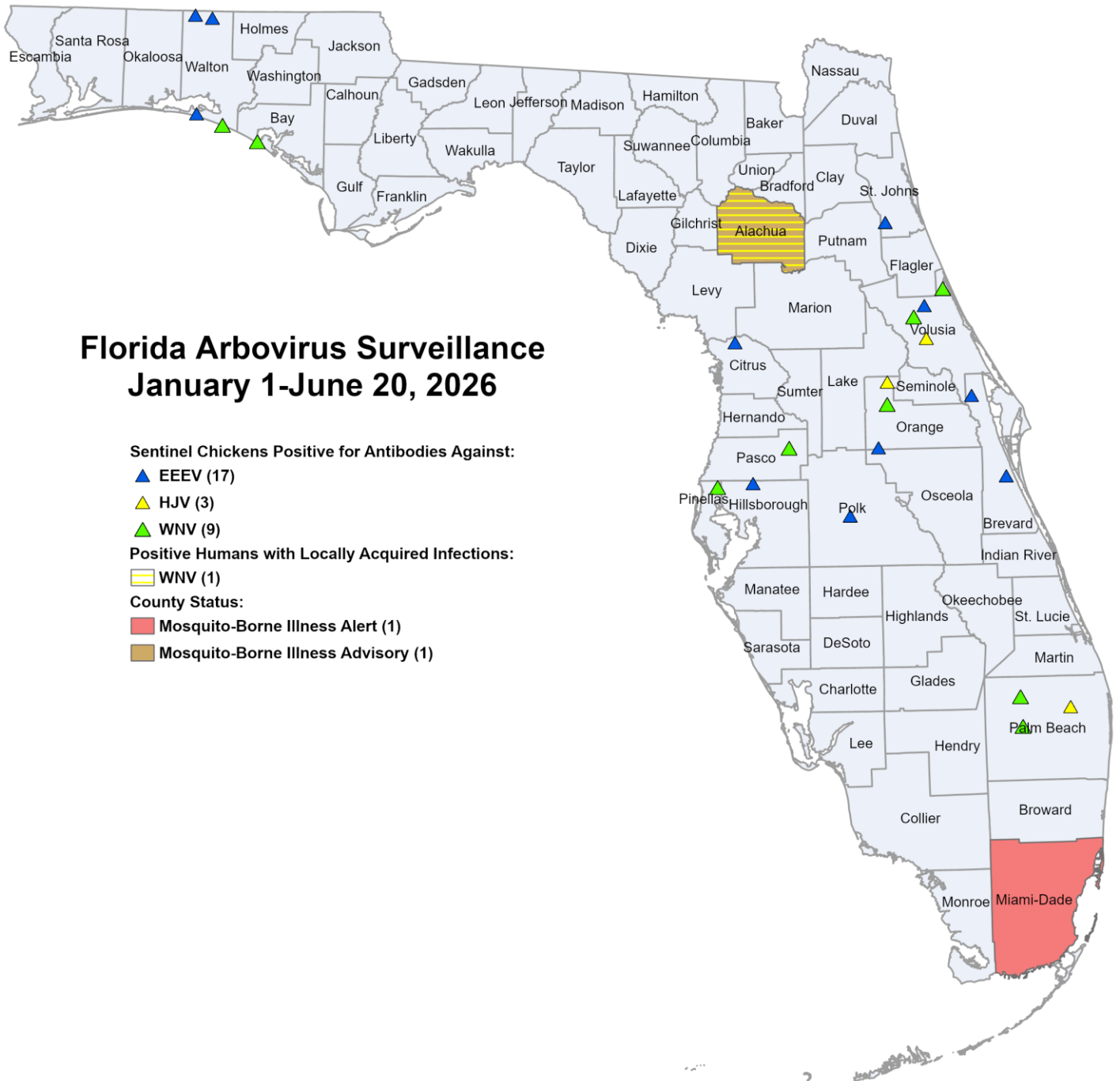
The Fish and Wildlife Conservation Commission (FWC) collects reports of dead birds, which can be an indication of arbovirus circulation in an area. This week, 36 reports representing a total of 98 dead birds, including nine crows, four raptors, and 16 doves were received from 16 counties.

In 2026, 1085 reports representing a total of 2461 dead birds (39 crows, 19 jays, 319 raptors, 69 doves) were received from 50 of Florida's 67 counties.

2026

County	Total Dead Birds	Crows	Jays	Raptors	Doves
Brevard	15	2	0	0	10
Broward	8	1	0	0	0
Citrus	2	0	0	0	0
Duval	1	0	0	0	0
Flagler	1	0	0	0	0
Hillsborough	1	0	0	1	0
Lake	3	0	0	1	0
Miami-Dade	45	0	0	0	4
Orange	1	0	0	0	0
Palm Beach	7	6	0	0	0
Pasco	2	0	0	0	0
Pinellas	7	0	0	0	0
Polk	1	0	0	1	0
Seminole	1	0	0	1	0
St. Lucie	1	0	0	0	0
Volusia	2	0	0	0	2





Florida Arbovirus Surveillance January 1-June 20, 2026

- Sentinel Chickens Positive for Antibodies Against:**
- ▲ EEEV (17)
 - ▲ HJV (3)
 - ▲ WNV (9)
- Positive Humans with Locally Acquired Infections:**
- WNV (1)
- County Status:**
- Mosquito-Borne Illness Alert (1)
 - Mosquito-Borne Illness Advisory (1)

2026 Mosquito-Borne Disease Activity by County

County	Humans	Equines	Sentinel Chickens	Other
Alachua	1 WNV (May)			
Bay			1 WNV (1/12)	
Brevard			2 EEEV (3/19, 5/14)	
Citrus			1 EEEV (3/17)	
Hillsborough			1 EEEV (5/11)	
Orange			3 EEEV (4/21, 5/12, 6/2) 1 HJV (5/4) 1 WNV (2/23)	

County	Humans	Equines	Sentinel Chickens	Other
Palm Beach			1 HJV (3/23) 2 WNV (3/9)	
Pasco			1 WNV (4/20)	
Pinellas			1 WNV (6/8)	
Polk			1 EEEV (5/18)	
St. Johns			2 EEEV (4/27, 5/26)	
Volusia		1 EEEV (3/14)	3 EEEV (2/23, 3/23) 1 HJV (3/30) 2 WNV (1/26, 3/16)	
Walton			4 EEEV (4/27, 5/4, 5/26) 1 WNV (4/6)	

Acknowledgements and Data Sources

Contributors: Andrea Morrison, PhD, MSPH, Rebecca Zimler, PhD, MPH, Olga Ospina, MPH, and Danielle Stanek, DVM, DOH Bureau of Epidemiology; Lea Heberlein, DrPH; Peter Dumoulin, PhD, Edgar Kopp, MS, Brittany Rowlette, and Amanda Davis, BS; DOH Bureau of Public Health Laboratories.

For more surveillance information, please see the DOH website at: www.floridahealth.gov/diseases-and-conditions/mosquito-borne-diseases/surveillance.html

For arbovirus surveillance information for the United States, please see the Centers for Disease Control and Prevention website at: www.cdc.gov/ncidod/dvbid/westnile/surv&control.htm

Case tallies included in the weekly Florida arbovirus surveillance report include confirmed and probable cases for EEE, WNV infection, SLE, dengue, chikungunya, and malaria by date of onset. Suspect cases are not included. Activity is mapped by county of exposure rather than county of residence. Case definitions being used in Florida are consistent with national criteria provided by the Council of State and Territorial Epidemiologists (CSTE) and may be viewed at: www.floridahealth.gov/diseases-and-conditions/disease-reporting-and-management/disease-reporting-and-surveillance/index.html. Case tallies reported by CDC do not include suspect cases and cases are reported by patient state of residence rather than where the exposure occurred. Data is provided by county health departments, Department of Health Bureau of Public Health Laboratories, Department of Agriculture and Consumer Services, mosquito control agencies, Florida Fish and Wildlife Conservation Commission, medical providers and veterinarians. Equine cases are provided by the Department of Agriculture and Consumer Services.